



Office of Portfolio Management

Proposal for elementary school rezoning presented to CEC 10 by the Office of Portfolio Management on behalf of the Community School District Superintendent



**Department of
Education**

Dennis M. Walcott, Chancellor

November 14, 2013

Table of Contents

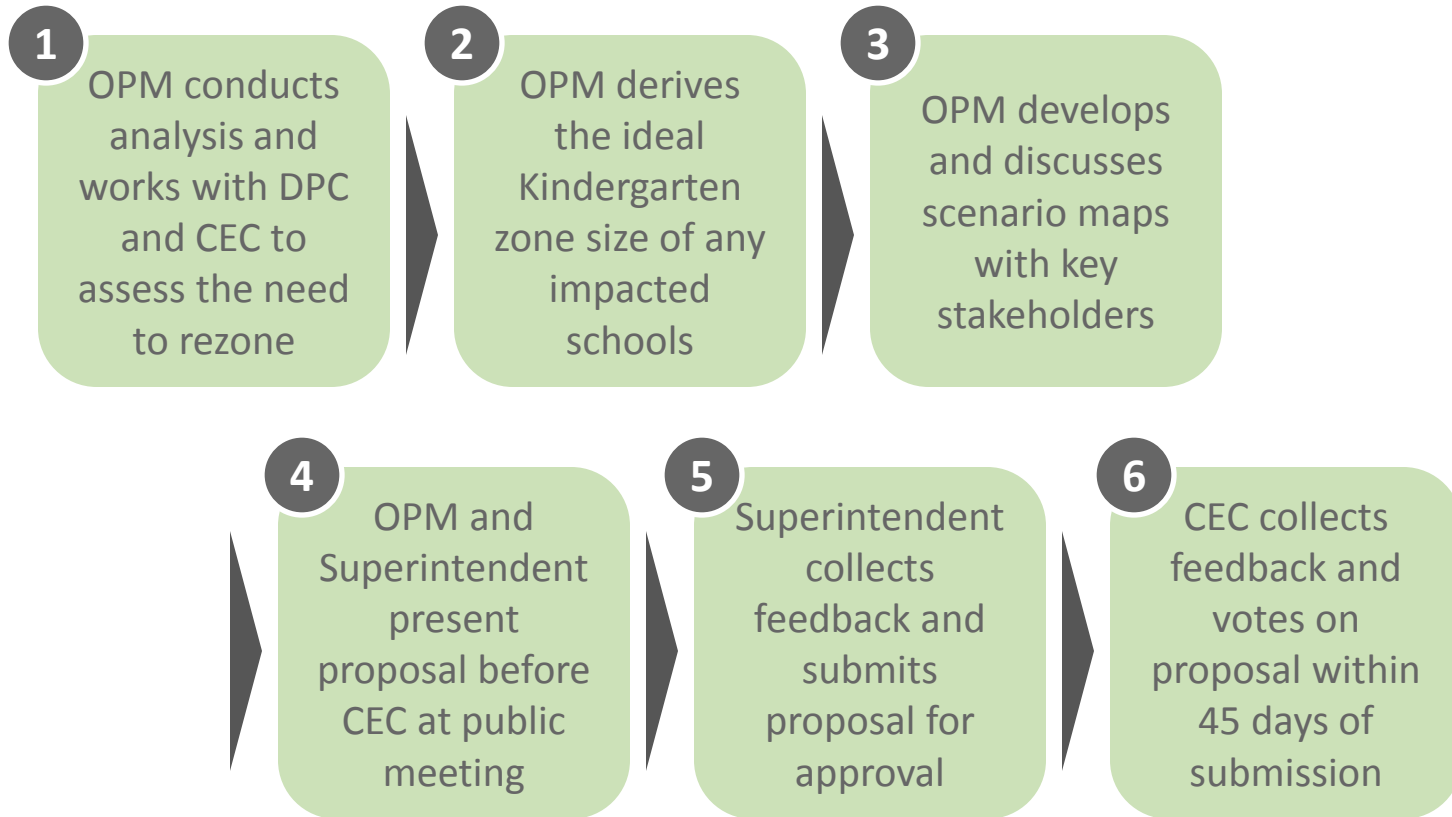
	Slide #
I. Rationale for Rezoning	3
II. Overview of the Rezoning Process	4
III. Guiding Policies and Principles	5
IV. Methodology	6-7
a. Determining the Target K Zone Size	
b. Determining the Zone Lines	
V. Schools Affected by Rezoning	8-9
VI. Impact of Rezoning	10-11
VII. Proposed Zone Lines	12
VIII. Contact Information for Comments	13
IX. Appendix	14-18
a. Admissions Process	
b. Planned Section Counts	
c. Planned Average Class Sizes	
d. Zoned Percentage Rates	
e. Overview of Projections Methodology	



Rationale for Rezoning

- The Department of Education is introducing a new building in District 10 and must create a zone for the elementary school that will be sited in that building.
- The Department of Education is also building an addition to the X056 building.
- With the increased space and seat availability created by the new school building and P.S. 56's addition along with an efficient use of schools in the area, the Department of Education can significantly reduce overcrowding at nearby schools (P.S./M.S. 280, P.S. 56, P.S. 8, and P.S. 46).

Overview of Rezoning Process



Guiding Policies and Principles

- Pending approval by the CEC, the proposed changes would take effect for the 2014-2015 academic year.
- Pending approval by the CEC, the proposed changes would only impact incoming Kindergarten or new students to the system. All currently enrolled students may remain in their school until graduation.
- Sibling enrollment policies would remain in effect. Children currently living in the affected zones who would be zoned to another school as a result of this proposal would retain their enrollment status as an in-zone sibling as long as they have an older sibling attending the school in grades 1-5 during the year in which the student would enroll in kindergarten.
- See Appendix A for the admissions process as outlined in the Chancellor's regulation A-101.
- The Office of Pupil Transportation (OPT) will follow standard procedure to determine bus service eligibility of general education students, as outlined by Chancellor's regulation A-801.



Methodology – Determining the Target K Zone Size

Seat Supply: What is the capacity of each school?

Specifically, how many instructional sections can each building accommodate?

We assess capacity based on:

- The number of full-size classrooms available in the building;
- The number of cluster rooms to which a school is entitled; and
- Historical enrollment increases and decreases at each grade level.

Seat Demand: How many students do we anticipate?

We assess demand – both from inside and outside the zone – based on:

- The historical number of Kindergarten students living in the zone;
- Historical Kindergarten waitlists and capping activity;
- Historical average class sizes;
- Historical zone retention rates (the percent of students who live in the zone and attend their zoned school);
- Historical zone enrollment rates (the percent of enrolled students who are also zoned to that school); and
- Anticipated Kindergarten growth, based on current/future housing developments.



Methodology – Determining the Zone Lines

To the extent possible, we draw zone lines in a way that:

- Achieves the targeted Kindergarten zone size for all affected schools;
- Addresses concerns of the local community;
- Accounts for residential construction and population growth within the affected areas;
- Avoids forcing students to cross geographic barriers (e.g. highways , district lines, etc.);
- Centrally locates the school within the zone;
- Minimizes the distance students must travel to attend their zoned school; and
- Maintains the diversity of schools.



Schools Affected by Rezoning

In the year prior to implementation:

DBN	School Name	Grade Span	Total Enrollment ¹	Total Org Capacity ²	Utilization %	Zone % Minority ³
10X008	P.S. 8 Issac Varian	K-5	1,206	829	145%	92%
10X020	P.S. 20 P.O. George J. Werdan III*	K-8	1,068	1,077	99%	94%
10X046	P.S. 46 Edgar Allan Poe	K-5	1,243	1,032	120%	99%
10X054	P.S./I.S. 54*	K-5	447	430	104%	100%
10X056	P.S. 56 Norwood Heights	K-5	693	470	147% ⁴	92%
10X280	P.S./M.S. 280 Mosholu Parkway	K-8	829	682	122%	95%

(1) Based on 2013-14 Budget Register Projections.

(2) Based on 2012-13 Blue Book Capacity.

(3) Zone Percent Minority figures are based on the ethnicity of zoned Kindergarten students as of the 2012 Audited Register. Students identified as "White – not of Hispanic origin" are not counted as minority.

(4) During the 2013-14 school year, P.S. 56 lost capacity due to construction and non-renewal of a lease, resulting in a grade being temporarily re-sited. As such, this utilization rate does not accurately reflect how P.S. 56 is being utilized. For further information, please see the [Educational Impact Statement](#).

* School offers a PK program.

Schools Affected by Rezoning

In the year schools have reached full scale:

DBN	School Name	Grade Span	Projected Enrollment ¹	Total Org Capacity ²	Projected Utilization %	Zone % Minority ³
10X008	P.S. 8 Issac Varian	K-5	905-915	829	110%-115%	94%
10X020	P.S. 20 P.O. George J. Werdan III*	K-8	1,070-1,080	1,077	95%-100%	95%
10X046	P.S. 46 Edgar Allan Poe	K-5	1,180-1,190	1,032	105%-110%	99%
10X054	P.S./I.S. 54*	K-5	505-515	430	115%-120%	100%
10X056	P.S. 56 Norwood Heights	K-5	685-695	696	95%-100% ⁴	92%
10X280	P.S./M.S. 280 Mosholu Parkway	K-8	740-750	682	105%-110%	94%
10XTBD	New School	K-5	605-615	580	105%-110%	92%

(1) See appendix for planned number of sections and average class sizes used to derive total enrollment.

(2) Based on 2011-2012 Blue Book Capacity

(3) Zone Percent Minority figures are based on the ethnicity of zoned Kindergarten students as of the 2012 Audited Register. Students identified as "White – not of Hispanic origin" are not counted as minority.

(4) Utilization rate takes into account added capacity at P.S. 56.

* School offers a PK program.

Impact of Rezoning – Kindergarten Zone Size

School Name	Current K Zone Size ¹	Planned K Zone Size	Change in K Zone Size
P.S. 8 Issac Varian	221	145-155	↓
P.S. 20 P.O. George J. Werdan III	108	120-130	↑
P.S. 46 Edgar Allan Poe	260	200-210	↓
P.S./I.S. 54	90	90-100	↑
P.S. 56 Norwood Heights	114	100-110	↓
P.S./M.S. 280 Mosholu Parkway	110	95-105	↓
New School	-	115-125	-



Impact of Rezoning – Total Enrollment & Utilization

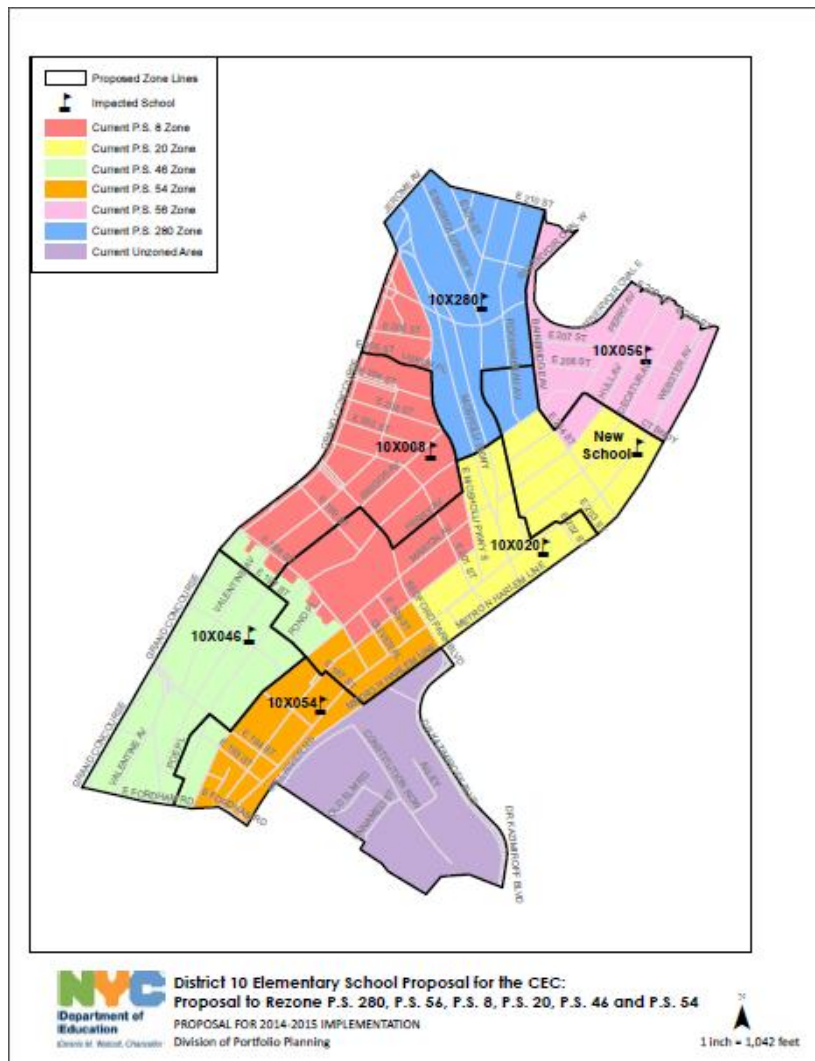
School Name	Current		Planned	
	Total Enrollment ¹	Utilization Rate	Total Enrollment ²	Utilization Rate
P.S. 8 Issac Varian	1,206	145%	905-915	110%-115%
P.S. 20 P.O. George J. Werdan III	1,068	99%	1,070-1,080	95%-100%
P.S. 46 Edgar Allan Poe	1,243	120%	1,180-1,190	105%-110%
P.S./I.S. 54	447	104%	505-515	115%-120%
P.S. 56 Norwood Heights	693	147% ³	685-695	95%-100%
P.S./M.S. 280 Mosholu Parkway	829	122%	740-750	105%-110%
New School	-	-	605-615	105%-110%

(1) The current total enrollment is based on 2013-14 Budget Register Projections.

(2) See appendix for assumed number of sections and average class sizes used to derive total enrollment.

(3) During the 2013-14 school year, PS 56 lost capacity due to construction and non-renewal of a lease, resulting in a grade being temporarily re-sited. As such, this utilization rate does not accurately reflect how P.S. 56 is being utilized. For further information, please see the [Educational Impact Statement](#).

Proposed Zone Lines



(1) All zone lines run down the center of the street unless otherwise specified.

Contact Information for Comments

Community
Superintendent

Phone: (718) 741 – 5852
Email: mmashel@schools.nyc.gov
Subject: District 10 Zoning

CEC
Community
Education Council

Email: CEC10@schools.nyc.gov
Subject: District 10 Zoning

OPM
Office of Portfolio
Management

Email: bronxzoning@schools.nyc.gov
Subject: District 10 Zoning



Department of
Education

Dennis M. Walcott, Chancellor

Appendix A – Admissions Process¹

Students will be enrolled in New York City elementary schools by the following priority:

- 1 - Zoned students whose verified siblings are pre-registered or enrolled at the time of application submission and will be enrolled in grades K-5 in the school at the start of the following school year
- 2 - Zoned students other than those in (1) above applying to the zoned school
- 3 - Students whose verified siblings are pre-registered or enrolled at the time of application submission and will be enrolled in grades K-5 in the school at the start of the following school year who are not zoned to the school,
 - a. Within District first, then
 - b. Out of District
- 4 - Students currently attending the school's pre-kindergarten program who reside outside the school's zone, *without* a sibling who will be in grades K-5 at the school in the following school year,
 - a. Within District first, then
 - b. Out of District
- 5 - Students other than those in (3a) and (4a) above who are residents of that district
- 6 - Students other than those in (3b) and (4b) who are residents of another district



Appendix B – Planned Section Counts

GE/ICT

School Name	Pre-Kindergarten ¹	Kindergarten	Grades 1-5	Self-Contained
P.S. 8 Issac Varian	-	5-6	5	2
P.S. 20 P.O. George J. Werdan III	1	5	4	6
P.S. 46 Edgar Allan Poe	-	7	6	10
P.S./I.S. 54	1	3	3	5
P.S. 56 Norwood Heights	-	4	4	4
P.S./M.S. 280 Mosholu Parkway	-	3	3	2
New School	2	4	3	2

(1) Pre-Kindergarten is a program that can be offered both half-day and full-day. Planned section counts represent the full-day equivalency.



Department of
Education

Dennis M. Walcott, Chancellor

Appendix C – Planned Average Class Sizes

School Name	GE/ICT			
	Pre-Kindergarten	Kindergarten	Grades 1-5	Self-Contained
P.S. 8 Issac Varian	-	25	30	12
P.S. 20 P.O. George J. Werdan III	18	25	25	12
P.S. 46 Edgar Allan Poe	-	25	29	12
P.S./I.S. 54	18	25	24	12
P.S. 56 Norwood Heights	-	25	27	12
P.S./M.S. 280 Mosholu Parkway	-	25	25	12
New School	18	25	30	12



Appendix D – Zone Retention and Enrollment Rates

			Zone Retention Rate for Kindergarten		Zone Enrollment Rate for Kindergarten	
School Name	Capped	K-Waitlist	Current ¹	Planned ²	Current	Planned ³
P.S. 8 Issac Varian	yes	yes	70%	80%	90%	95%
P.S. 20 P.O. George J. Werdan III	no	no	83%	80%	67%	85%
P.S. 46 Edgar Allan Poe	yes	no	76%	80%	96%	95%
P.S./I.S. 54	no	no	80%	75%	91%	95%
P.S. 56 Norwood Heights	no	no	77%	80%	92%	95%
P.S./M.S. 280 Mosholu Parkway	no	no	82%	80%	95%	95%
New School	-	-	-	75%	-	90%

- (1) The current rates (both zone retention and zone enrollment) are based on the 2012-2013 Audited Register as of October 26, 2012.
- (2) Planned retention rates are based on various factors, including but not limited to the historical number of zoned Kindergarten students that were waitlisted or overflowed due to capping.
- (3) Planned enrollment rates are based on the assumed reduction in out-of-zoned enrollment.



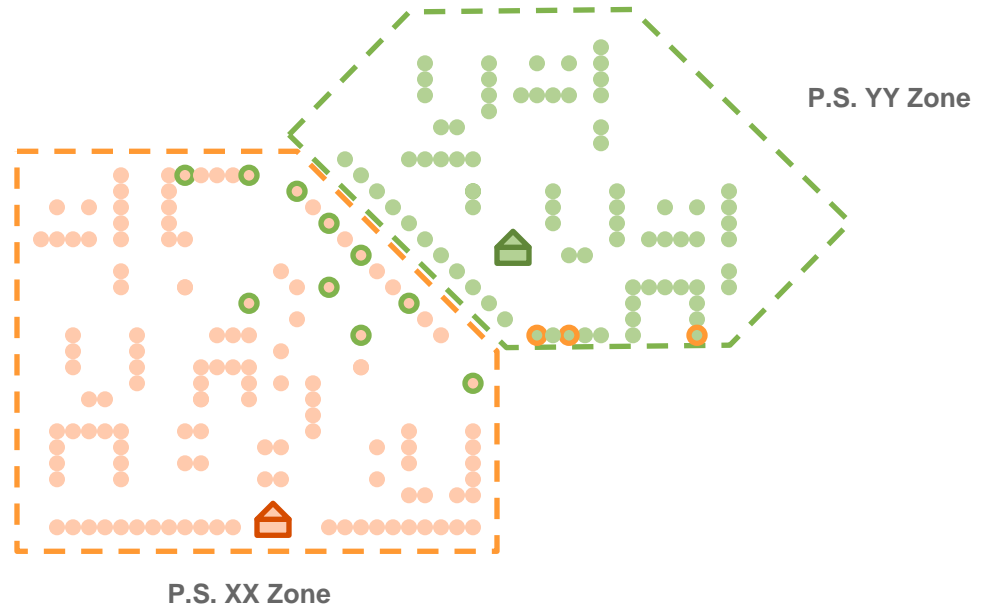
Department of
Education

Dennis M. Walcott, Chancellor

Appendix E – Projections Methodology

- Zoned to PS XX and attends.
- Zoned to PS XX but does not attend.
- Not zoned to PS XX but attends.

Metric	Definition	Value
Zone Size:	# of students that live in PS XX zone	● + ●
Zone Retention Rate:	% of zoned students that attend PS XX	$\frac{\text{orange dots}}{(\text{orange dots} + \text{green dots})}$
Zoned Enrollment Rate:	% of total enrollment that resides in zone	$\frac{\text{orange dots}}{(\text{orange dots} + \text{orange-green dots})}$



Example, Part I: There are currently 100 kindergarten students living in the P.S. XX zone. Due to the lack of a Gifted & Talented program, about 10 students on average have chosen to attend P.S. YY instead. What is the Zoned Retention Rate for P.S. XX?

$$\text{Zoned Retention Rate} = \text{Zoned Students that Attend} \div \text{Zone Size} = (100-10) \div 100 = 90\%$$

Zone Size: 100

Zoned Retention Rate: 90%

Total Zoned Enrollment: 90



Department of
Education

Dennis M. Walcott, Chancellor