



Presentation to CEC 10 for the Rezoning of P.S. 7, P.S. 207, P.S./M.S. 279, P.S. 382, and P.S. 386

Office of District Planning

October 18, 2018

AGENDA

- Rezoning Overview
 - Policies and Methodology
 - Process and Timeline
- Rezoning Proposals
 - P.S. 7 and P.S. 207
 - P.S./M.S. 279, P.S. 382, and P.S. 386
- Questions & Answers
- Appendix

Standard Policies for Rezoning

When: Rezoning approved by the CEC tonight would take effect for the 2019-2020 academic year.

Who: Proposed changes would primarily impact incoming pre-kindergarten and kindergarten students, and students new to the system. All currently enrolled students in grades K-8 may remain in their school until graduation.

Standard Admissions Policies: All impacted schools will continue to admit students according to Chancellor's regulation A-101.

Standard Busing Policies: The Office of Pupil Transportation (OPT) will follow standard procedure to determine bus service eligibility of general education students, as outlined by Chancellor's regulation A-801.

Sibling Grandfathering

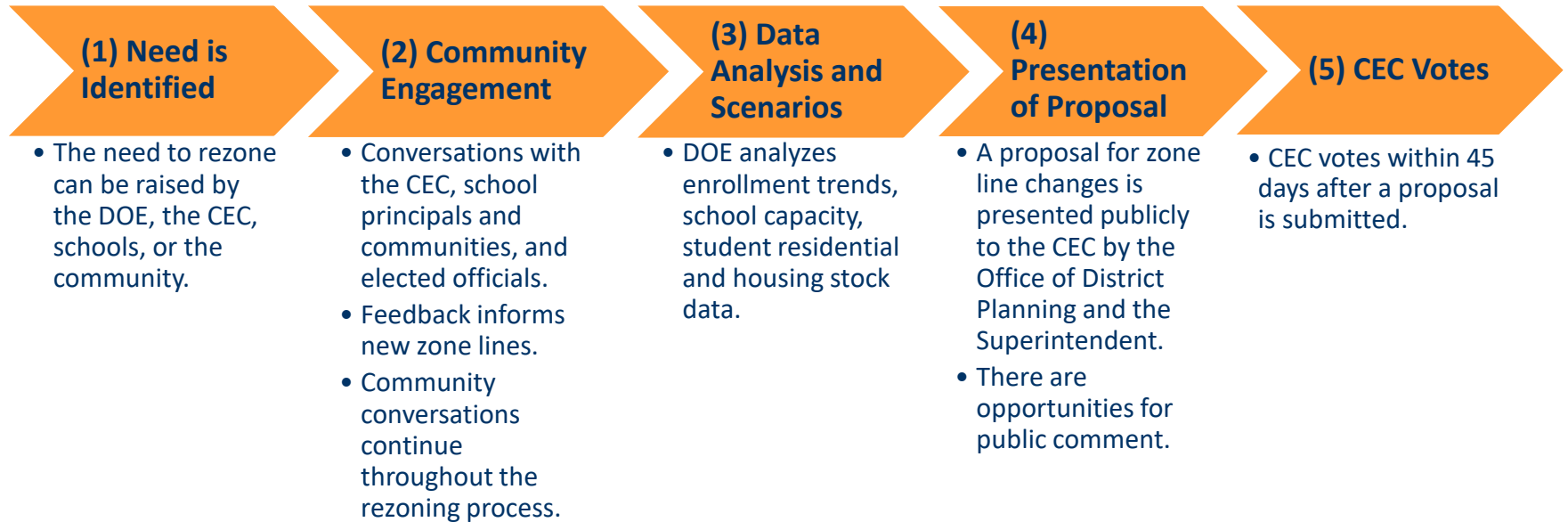
- Children entering pre-kindergarten and kindergarten with a current zoned sibling in grades K-8 at any rezoned elementary school will maintain their zoned sibling priority to that school.
- There is no sibling priority for middle school admissions.

Rezoning Methodology

Steps:

1. Determine the target kindergarten zone size for each school
2. Project future kindergarten residents
3. Draw new zone line scenarios, taking into consideration:
 - Diversity
 - Travel distance
 - New residential construction
 - Geographic barriers

Rezoning Process and Timeline



Timeline for 2019 Implementation

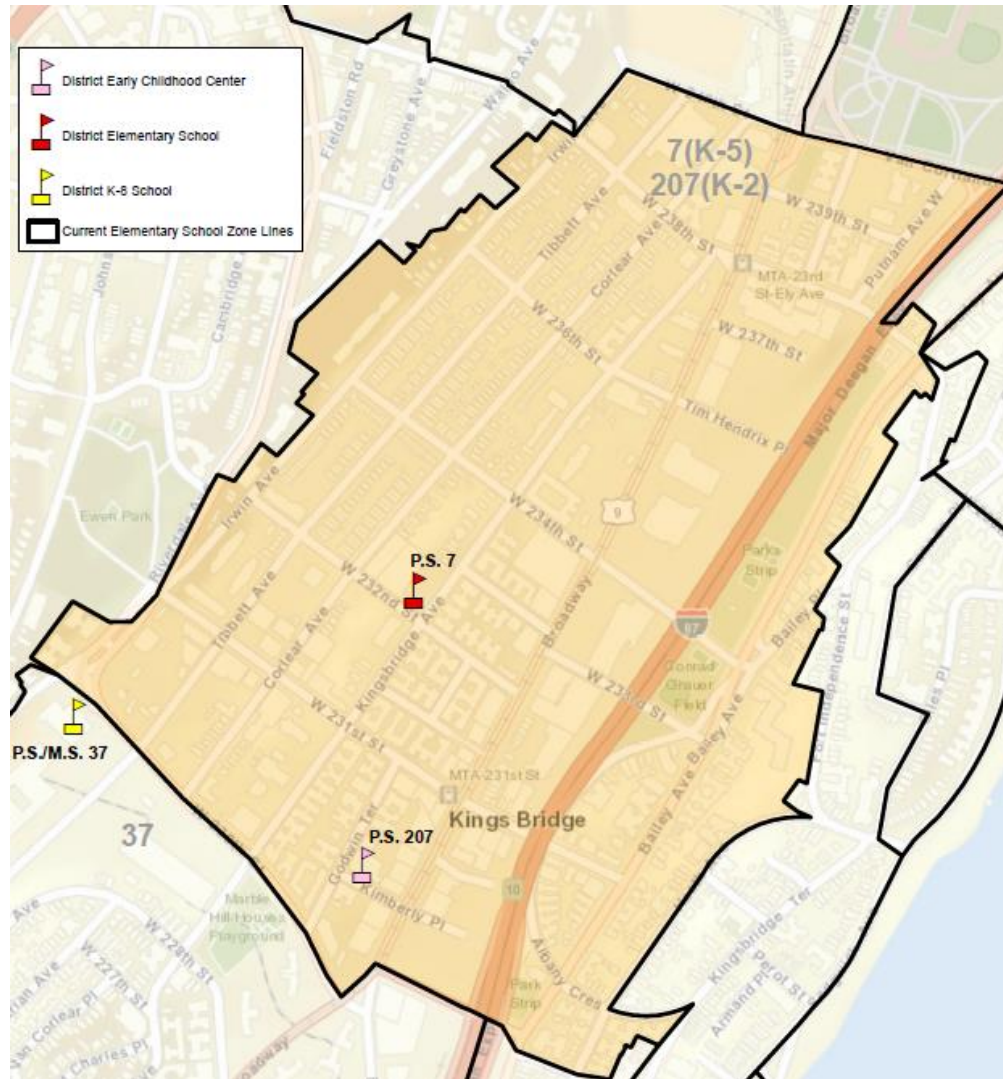


Rezoning Proposal 1

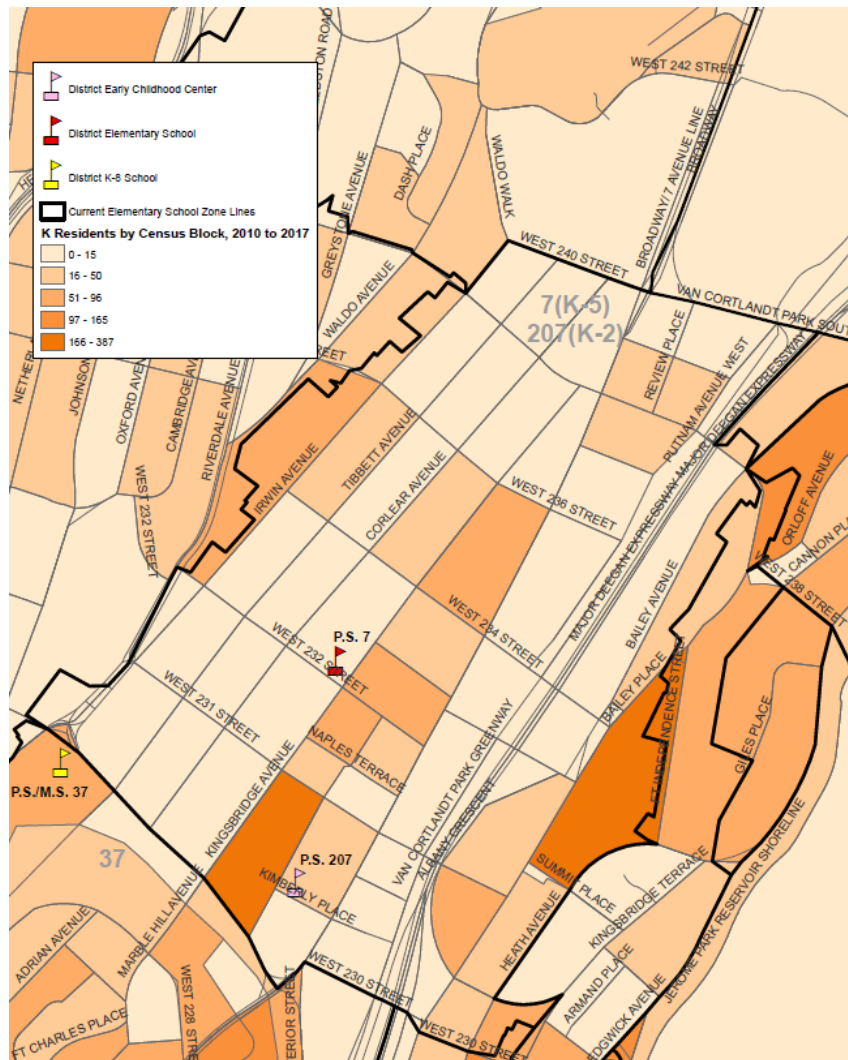
Elementary School Need for Rezoning: P.S. 7 and P.S. 207

- P.S. 207 and P.S. 7 share a zone.
- On December 20, 2017, the Panel for Educational Policy (PEP) approved a proposal to expand P.S. 207 from a K-2 to a K-5. The expansion began this year, and will phase in through 2020-2021.
- Given that P.S. 207 will now expand to serve grades K-5, P.S. 207 is able to serve a zone of its own.
- Splitting the zone will allow for all students to have a distinct zoned school which is clear to families. The split zone will also allow the schools to plan for a stable enrollment from year to year.

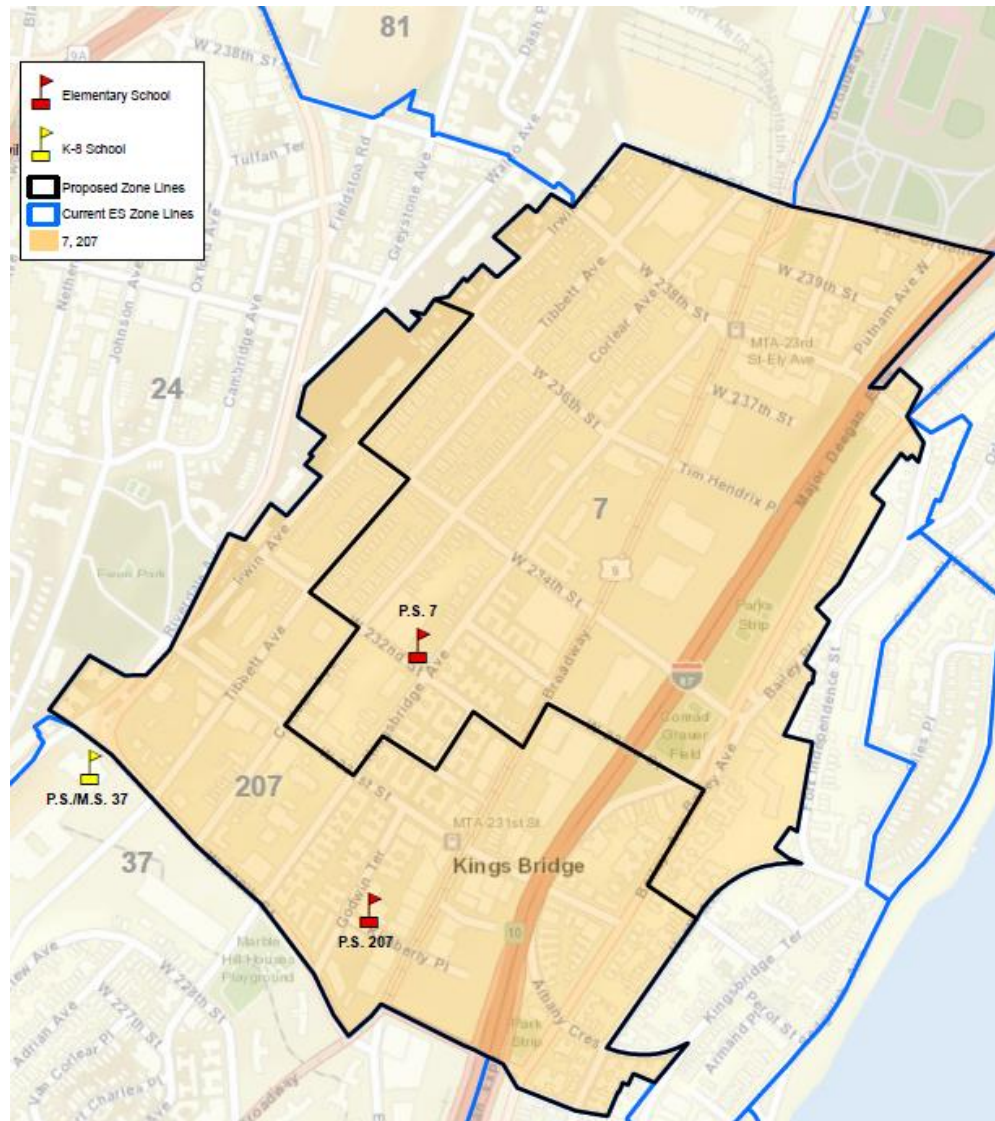
Current P.S. 207 and P.S. 7 Zone Lines



Current P.S. 207 and P.S. 7 Zone Lines – Density Map



Proposed Zone Lines: P.S. 207 and P.S. 7



Impact on School Zone Size

DBN	School Name	Current Zone Size ¹	Projected Zone Size ²	Change
10X007	P.S. 7 Milton Fein School	171 ³	85-95	N/A
10X207	P.S. 207		80-90	N/A

(1) Current zone size is based on a three-year 2015-2017 average.

(2) Projected zone size is when the rezoning is at scale.

(3) P.S. 7 and P.S. 207 currently share a zone.

Impact on School Enrollment

DBN	School Name	Current K Enrollment ¹	Projected K Enrollment ²	Current Total Enrollment ¹	Projected Total Enrollment ²
10X007	P.S. 7 Milton Fein School	66	100 ³	758	660-720
10X207	P.S. 207	106	75 ⁴	308	463-523

(1) Current enrollment is based on a three-year 2015-2017 average.

(2) Projected enrollment is when the rezoning is at scale.

(3) Due to the grade expansion of P.S. 207, P.S. 7 will no longer admit an additional 2-3 sections of students in third grade from P.S. 207. This will allow P.S. 7 to increase the number of class sections it serves in grades K-2 from 3 sections to 4 sections, increasing the overall number of available seats at P.S. 7 in those grades.

(4) To accommodate the growth in grade span and maintain target utilization levels, P.S. 207 will reduce the number of kindergarten students it serves from just over 100 to approximately 75, or three sections.

Impact on School Utilization

DBN	School Name	Capacity ¹	Current Org Utilization ²	Projected Org Utilization ³	Change
10X007	P.S. 7 Milton Fein	538	141%	123%-134%	Decrease
10X207	P.S. 207	361	85%	128%-145% ⁴	Increase

(1) Based on 2016-2017 Blue Book.

(2) Utilization based on the 2017-2018 Audited Register and 2016-2017 Blue Book Capacity.

(3) Projected Utilization is when the rezoning is at scale.

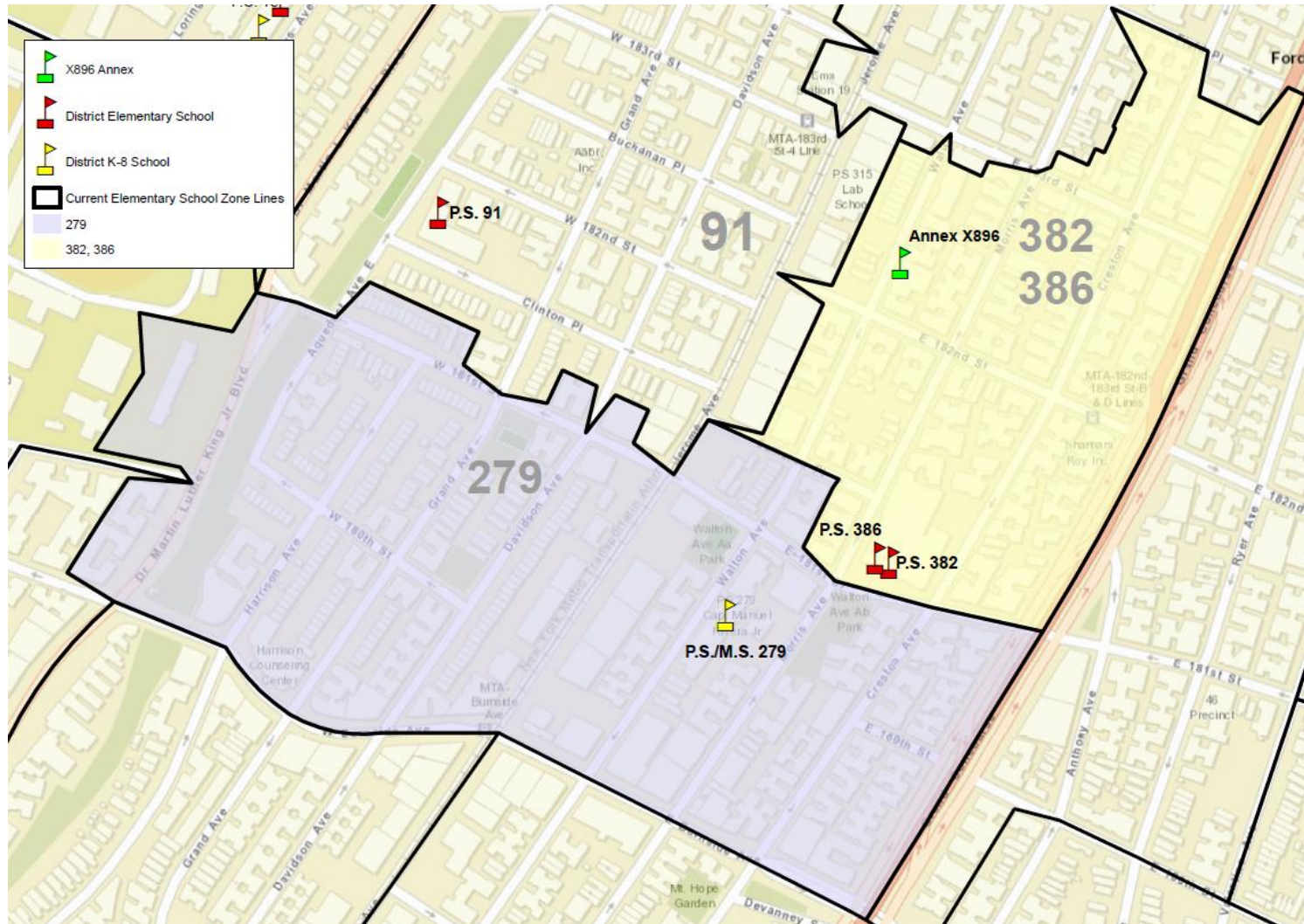
(4) P.S. 207's projected org utilization exceeds 100% due to the fact that the school is currently configured to only serve grades K-2. It is anticipated that P.S. 207 will reprogram the spaces in building X819 and use the rooms in a different manner than outlined by the Blue Book. The capacity of X819 is expected to increase as P.S. 207 continues to phase in to serve grades K-5 at scale.

Rezoning Proposal 2

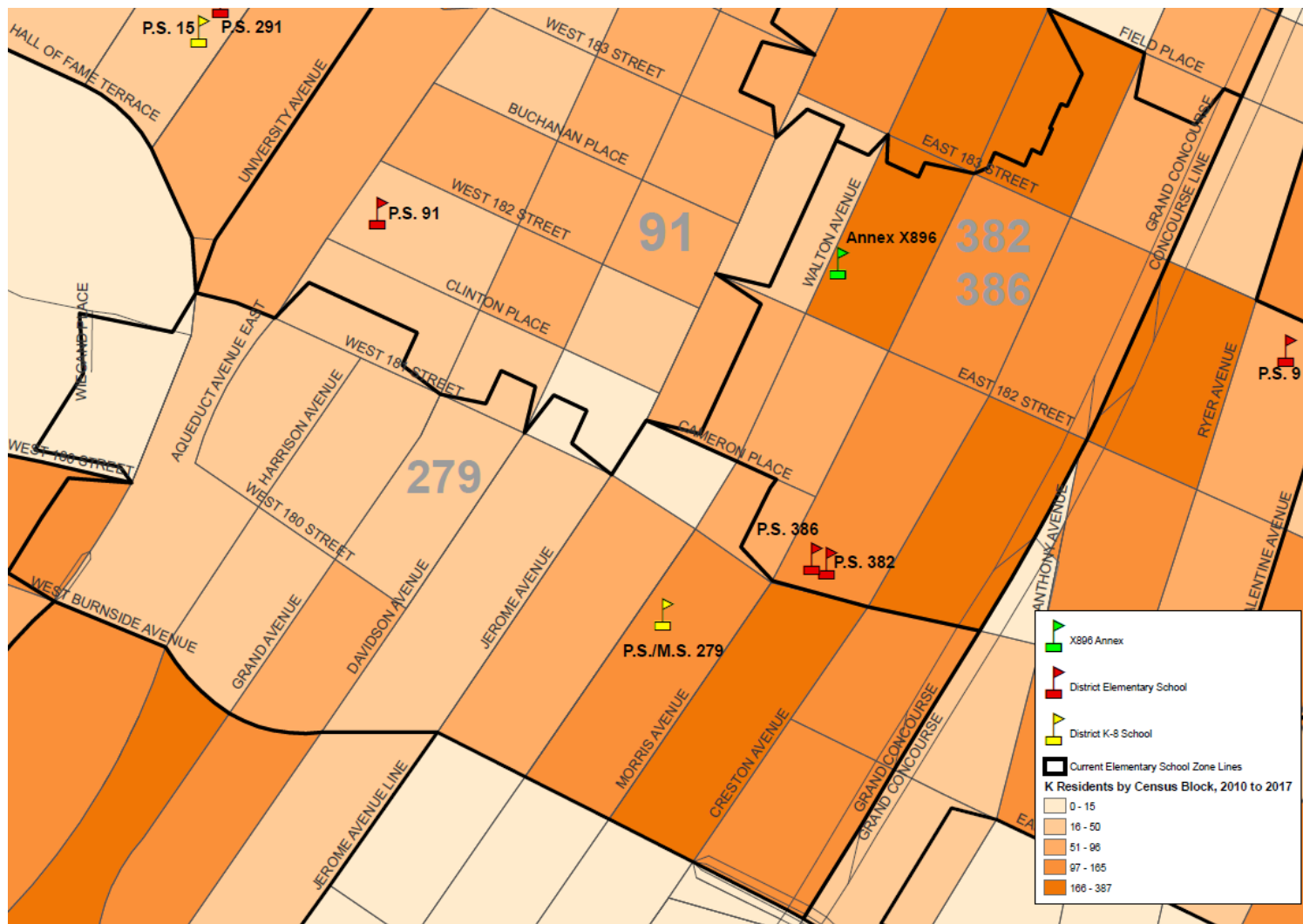
Elementary School Need for Rezoning: P.S./M.S. 279, P.S. 382, and P.S. 386

- P.S./M.S. 279 is one of the largest schools in the district, with nearly 1,100 students. It is located in main building X279 and annex X896.
- P.S. 382 and P.S. 386, which share a zone, are located in nearby building X079. P.S. 386 serves approximately 598 students in grades PK-5, but P.S. 382 serves just 273 in grades K-5.
- A rezoning would increase enrollment at P.S. 382 and help equalize the enrollment between these schools.
- Currently P.S./M.S. 279 serves five classes in annex X896, which is physically located in the P.S. 382/P.S. 386 zone and is closer to P.S. 382/P.S. 386 than to P.S./M.S. 279. If a rezoning is approved, annex X896 would shift from P.S./M.S. 279 to P.S. 382 for the 2021-2022 school year.

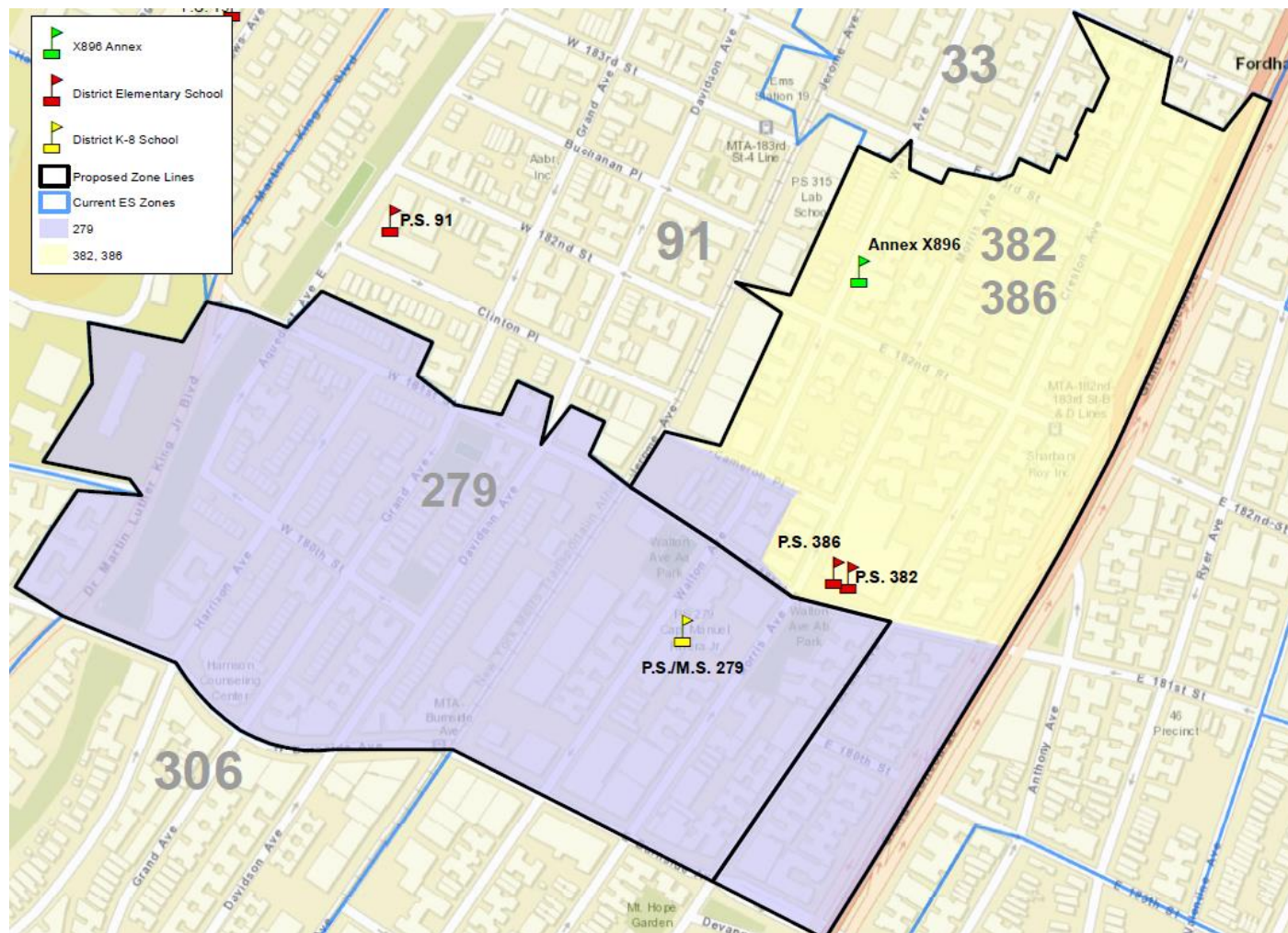
Current P.S./M.S. 279 and P.S. 382/P.S. 386 Elementary Zone Lines



Current P.S./M.S. 279 and P.S. 382/P.S. 386 Zone Lines – Density Map



Proposed Zone Lines: P.S./M.S. 279 and P.S. 382/P.S. 386



Impact on Elementary School Zone Size

DBN	School Name	Current K Zone Size ¹	Projected K Zone Size ²	Change
10X279	P.S./M.S. 279 Captain Manuel Rivera, Jr.	133	85-95	Decrease
10X382	P.S. 382 Elementary School for Math, Science, and Technology	140 ³	175-185	Increase
10X386	P.S. 386 School for Environmental Citizenship			

(1) Current zone size is based on a three-year 2015-2017 average.

(2) Projected zone size is when the rezoning is at scale.

(3) P.S. 382 and P.S. 386 currently share a zone.

Impact on School Enrollment

DBN	School Name	Current K Enrollment ¹	Projected K Enrollment ²	Current Total Enrollment ¹	Projected Total Enrollment ²
10X279	P.S./M.S. 279 Captain Manuel Rivera, Jr.	93	70	1,092	835-925
10X382	P.S. 382 Elementary School for Math, Science, and Technology	37	65	273	370-430
10X386	P.S. 386 School for Environmental Citizenship	92	90	598	529-589

(1) Current enrollment is based on a three-year 2015-2017 average.

(2) Projected enrollment is when the rezoning is at scale.

Impact on School Utilization

DBN	School Name	Current Capacity ¹	Current Org Utilization ²	Projected Capacity	Projected Org Utilization ³	Change
10X279	P.S./M.S. 279 Captain Manuel Rivera, Jr.	880	124%	808	103%-114% ⁴	Decrease
10X382	P.S. 382 Elementary School for Math, Science, and Technology	459	59%	531	70%-81% ⁴	Increase
10X386	P.S. 386 School for Environmental Citizenship	550	109%	550	96%-107%	Decrease

(1) Based on 2016-2017 Blue Book.

(2) Utilization based on the 2017-2018 Audited Register and 2016-2017 Blue Book Capacity.

(3) Projected Utilization is when the rezoning is at scale.

(4) P.S./M.S. 279's current org capacity includes the Annex X896, which will be assigned to P.S. 382 when the rezoning is at scale, therefore increasing the org capacity at P.S. 382.

Next Steps

- At this time we will ask the CEC to vote on the rezoning proposals.
- ODP will be working with the CEC, Superintendent, and school community later this fall on middle school rezoning scenarios, which will include a rezoning that would align P.S./M.S. 279's middle school zone with the elementary school zone. This rezoning would be subject to CEC approval.

Questions & Answers

FOR MORE INFORMATION

Community Education Council 10

CEC10@schools.nyc.gov

Office of District Planning

BronxZoning@schools.nyc.gov

Bronx District Planning

<https://www.schools.nyc.gov/about-us/school-planning/district-planning>

Appendix

- A. Section Counts
- B. Average Class Size
- C. Zone Demand
- D. Zone Demographics – FRL or HRA Eligible
- E. Zone Demographics – Ethnicity
- F. What Can Rezoning Accomplish?
- G. Historical Ratios
- H. Rezoning Methodology

Appendix A.1: P.S. 7 and P.S. 207

2017-2018 Section Counts

School Name	PK	K	Grades 1-5	Self-Contained
P.S. 7 Milton Fein	-	3 ¹	2-5	5
P.S. 207	2	5	3	-

(1) P.S. 7 serves 1 section of G&T in addition to 2 GE/ICT sections.

Appendix A.2: P.S. 7 and P.S. 207

Projected Section Counts

School Name	PK	K	Grades 1-5	Self-Contained
P.S. 7 Milton Fein	-	4	4	5
P.S. 207	1	3	3	-

Appendix A.3: P.S./M.S. 279 and P.S. 382/P.S. 386 2017-2018 Elementary School Section Counts

School Name	PK	K	Grades 1-5	Self- Contained
P.S./M.S. 279 Captain Manuel Rivera, Jr.	-	4	4	6
P.S. 382 Elementary School for Math, Science, and Technology	-	2	2	-
P.S. 386 School for Environmental Citizenship	4	4	3-4	3

Appendix A.4: P.S./M.S. 279 and P.S. 382/P.S. 386

Projected Elementary School Section Counts

School Name	PK	K	Grades 1-5	Self-Contained
P.S./M.S. 279 Captain Manuel Rivera, Jr.	-	3	3	6
P.S. 382 Elementary School for Math, Science, and Technology	-	3	3	1
P.S. 386 School for Environmental Citizenship	4	4	3	3

Appendix B.1: P.S. 7 and P.S. 207

2017-2018 Average Class Sizes

School Name	PK	K	Grades 1-5	Self-Contained
P.S. 7 Milton Fein	-	24	29	8
P.S. 207	16	21	25	-

Appendix B.2: P.S. 7 and P.S. 207

Projected Average Class Sizes

School Name	PK	K	Grades 1-5	Self-Contained
P.S. 7 Milton Fein	-	20-25	25-27	8
P.S. 207	18	20-25	25-27	-

Appendix B.3: P.S./M.S. 279 and P.S. 382/P.S. 386

2017-2018 Elementary School Average Class Sizes

School Name	PK	K	Grades 1-5	Self-Contained
P.S./M.S. 279 Captain Manuel Rivera, Jr.	-	22	28	10
P.S. 382 Elementary School for Math, Science, and Technology	-	19	24	-
P.S. 386 School for Environmental Citizenship	18	22	25	9

Appendix B.4: P.S./M.S. 279 and P.S. 382/P.S. 386

Projected Average Elementary School Class Sizes

School Name	PK	K	Grades 1-5	Self-Contained
P.S./M.S. 279 Captain Manuel Rivera, Jr.	-	20-25	22-28	10
P.S. 382 Elementary School for Math, Science, and Technology	-	20-25	20-25	10
P.S. 386 School for Environmental Citizenship	18	20-25	20-25	9

Appendix C.1: P.S. 7 and P.S. 207 Kindergarten Zone Demand

School Name	Current K Zone Retention ¹	Projected K Zone Retention	Current K Zone Enrollment ²	Projected K Zone Enrollment
P.S. 7 Milton Fein	30%	75%-85%	70%	70%-80%
P.S. 207	46%	75%-85%	77%	90%-100%

1. Current zone retention is based on a three-year 2015-2017 average.

2. Current zone enrollment is based on a three-year 2015-2017 average.

Appendix C.2: P.S./M.S. 279 and P.S. 382/P.S. 386 Kindergarten Zone Demand

School Name	Current K Zone Retention ¹	Projected K Zone Retention	Current K Zone Enrollment ²	Projected K Zone Enrollment
P.S./M.S. 279 Captain Manuel Rivera, Jr.	67%	65%-75%	86%	85%-95%
P.S. 382 Elementary School for Math, Science, and Technology	22%	25%-35%	74%	75%-85%
P.S. 386 School for Environmental Citizenship	52%	35%-45%	77%	75%-85%

1. Current zone retention is based on a three-year 2015-2017 average.
2. Current zone enrollment is based on a three-year 2015-2017 average.

Appendix D.1: P.S. 7 and P.S. 207 Kindergarten Zone Demographic Changes Free & Reduced Lunch or HRA Eligible

School Name	Current % Eligible ¹	Projected % Eligible
P.S. 7 Milton Fein	75%	70%-80%
P.S. 207		70%-80%

1. Current % FRL or HRA Eligible is based on a three-year 2015-2017 average.

Appendix D.2: P.S./M.S. 279 and P.S. 382/P.S. 386 Kindergarten Zone Demographic Changes Free & Reduced Lunch or HRA Eligible

School Name	Current % Eligible ¹	Projected % Eligible
P.S./M.S. 279 Captain Manuel Rivera, Jr.	91%	85%-95%
P.S. 382 Elementary School for Math, Science, and Technology	96%	90%-100%
P.S. 386 School for Environmental Citizenship		

1. Current % FRL or HRA Eligible is based on a three-year 2015-2017 average.

Appendix E.1: P.S. 7 and P.S. 207 Kindergarten Zone Demographic Changes Non-White

School Name	Current % Non-white ¹	Projected % Non-white
P.S. 7 Milton Fein	91%	85%-95%
P.S. 207		85%-95%

1. Current % non-white is based on a three-year 2015-2017 average.

Appendix E.2: P.S. 7 and P.S. 207 Kindergarten Zone Demographic Changes Current Ethnicity¹

School Name	Asian	Black	Hispanic	White	Other
P.S. 7 Milton Fein	5%	6%	79%	9%	1%
P.S. 207					

1. Current ethnicity is based on a three-year 2015-2017 average.

Appendix E.3: P.S. 7 and P.S. 207 Kindergarten Zone Demographic Changes Projected Ethnicity

School Name	Asian	Black	Hispanic	White	Other
P.S. 7 Milton Fein	4%	7%	80%	8%	1%
P.S. 207	6%	6%	79%	9%	0%

Appendix E.4: P.S./M.S. 279 and P.S. 382/P.S. 386 Kindergarten Zone Demographic Changes Non-White

School Name	Current % Non-white ¹	Projected % Non-white
P.S./M.S. 279 Captain Manuel Rivera, Jr.	99%	90%-100%
P.S. 382 Elementary School for Math, Science, and Technology	98%	90%-100%
P.S. 386 School for Environmental Citizenship		

1. Current % non-white is based on a three-year 2015-2017 average.

Appendix E.5: P.S./M.S. 279 and P.S. 382/P.S. 386 Kindergarten Zone Demographic Changes

Current Ethnicity¹

School Name	Asian	Black	Hispanic	White	Other
P.S./M.S. 279 Captain Manuel Rivera, Jr.	4%	20%	73%	1%	3%
P.S. 382 Elementary School for Math, Science, and Technology	0%	16%	80%	2%	1%
P.S. 386 School for Environmental Citizenship					

1. Current ethnicity is based on a three-year 2015-2017 average.

Appendix E.6: P.S./M.S. 279 and P.S. 382/P.S. 386 Kindergarten Zone Demographic Changes

Projected Ethnicity

School Name	Asian	Black	Hispanic	White	Other
P.S./M.S. 279 Captain Manuel Rivera, Jr.	5%	20%	72%	1%	2%
P.S. 382 Elementary School for Math, Science, and Technology	0%	17%	79%	1%	2%
P.S. 386 School for Environmental Citizenship					

Appendix F: What Can Rezoning Accomplish?

Rezoning is an important lever for improving educational access and learning conditions

- Improve educational access
 - Create a zone for a new school option
 - Increase access to high quality schools
 - Increase or equalize diversity in or across zones
 - Provide students the opportunity to attend their zoned school
 - Allow families to make informed decisions/choices regarding their children's educational experience
- Improve learning conditions
 - Alleviate overcrowding
 - Reduce waitlists
 - Reduce overutilization
 - Equalize utilization across buildings
 - Remove Temporary Classroom Units (TCUs)

Appendix G.1: P.S. 7 and P.S. 207 Historic Ratios by Zone¹

	Kindergarten Residents per Housing Unit							3 year avg.
	2011	2012	2013	2014	2015	2016	2017	
10X007, 10X207	0.000	0.027	0.026	0.027	0.027	0.024	0.027	0.026
Zone Total	0.000	0.027	0.026	0.027	0.027	0.024	0.027	0.026

1. Based on 2011-2017 Audited Registers, and housing data provided by the Department of City Planning.

Appendix G.2: P.S. 279, P.S. 382/P.S. 386 Historic Ratios by Zone¹

	Kindergarten Residents per Housing Unit							3 year avg.
	2011	2012	2013	2014	2015	2016	2017	
10X279	0.050	0.054	0.051	0.061	0.053	0.052	0.048	0.051
10X382, 10X386	0.053	0.044	0.058	0.059	0.050	0.051	0.053	0.051
Zones Total	0.051	0.049	0.055	0.060	0.052	0.051	0.051	0.051

1. Based on 2011-2017 Audited Registers, and housing data provided by the Department of City Planning.

Appendix H: Rezoning Methodology

Steps:

1. Determine the target kindergarten zone size for each school
2. Project future kindergarten residents
3. Draw new zone line scenarios

Methodology Step 1: Determining the Target Zone Size

Seat Supply: What is the capacity of each school?

Specifically, how many instructional sections (i.e. classes) and how many students can each building accommodate?

Seat Demand: How many students do we anticipate?

We assess demand – both from inside and outside the zone – based on:

- The historical number of kindergarten students living in the zone;
- Historical kindergarten waitlists and capping activity;
- Historical average class sizes;
- Historical zone retention rates and historical zone enrollment rates; and
- Anticipated kindergarten growth, based on current/future housing developments.

Methodology Step 2a: Projecting Kindergarten Residents

Analysis of Historical Ratios (2011-2017)

- > Analyze annual ratios of Kindergarteners to Housing Units
- > Ratios are calculated at multiple levels of geography
 - Block
 - School zone
 - Neighborhood
 - School district



Methodology Step 2b:

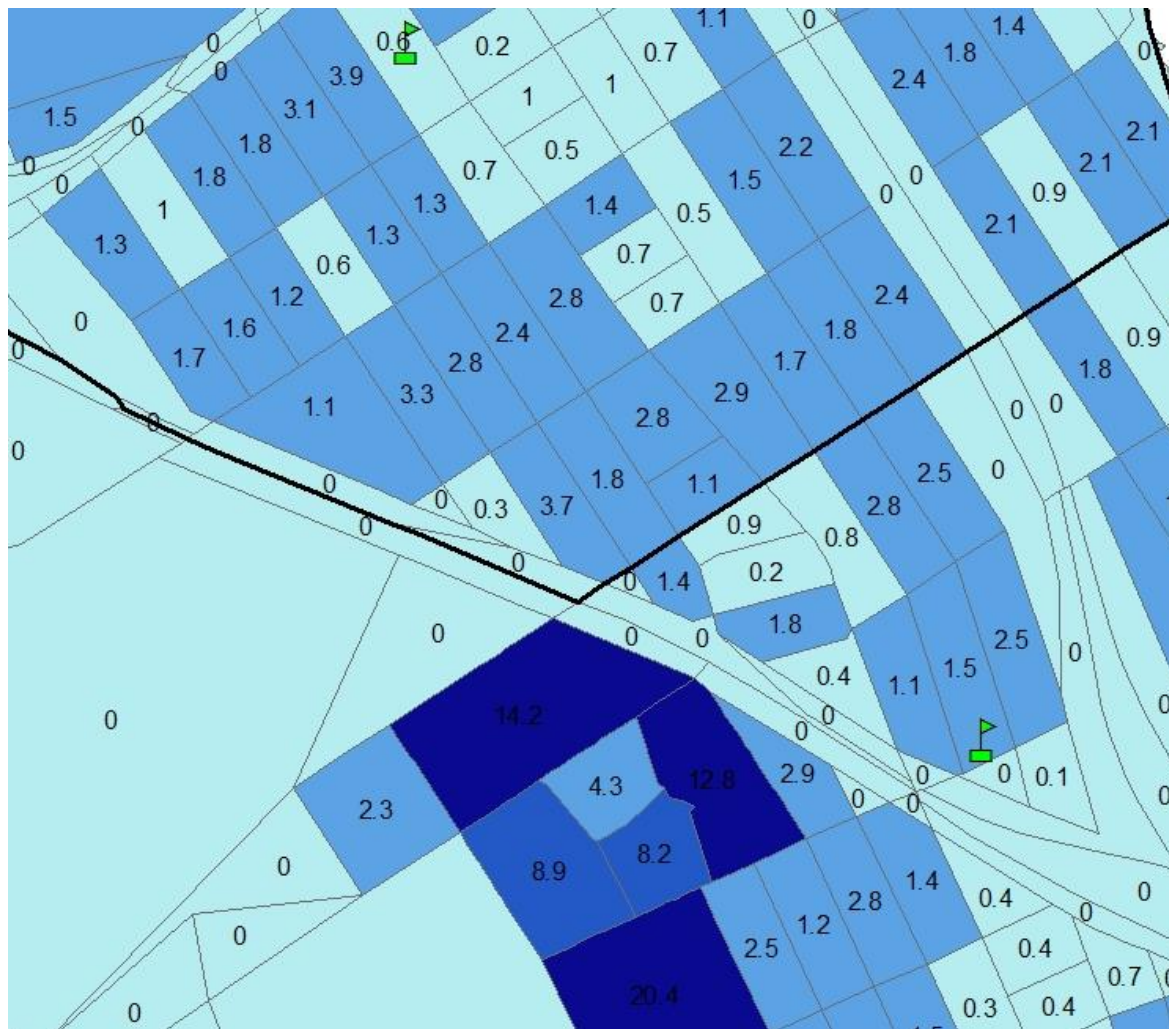
Projecting Kindergarten Residents

Projecting Kindergarten Residents per Block

- > Housing projected for each block (existing units + issued DOB permits)
- > Weighted average of historical ratios (# of students per housing unit)



Methodology Step 2: Projecting Kindergarten Residents




Map legend

 Current Zone Line

Projected Kindergarten students

 >10

 5.1 to 10

 1.1 to 5

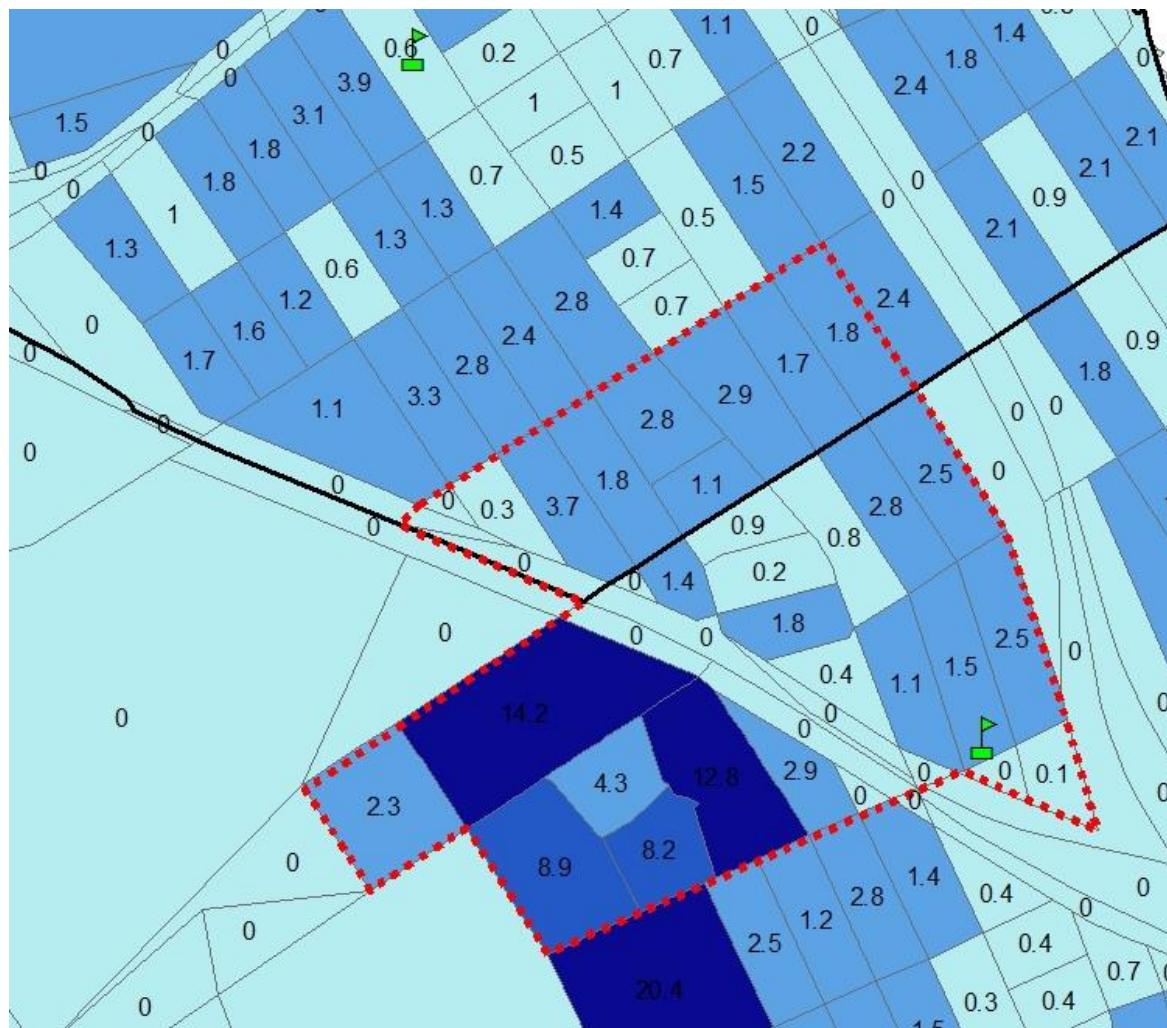
 0 to 1

Methodology Step 3: Drawing the Zone Lines



To the extent possible, we draw zone lines in a way that:

- Contains appropriate number of residents for a school's size, based on recent public school enrollment trends
- Keeps each school geographically within the zone boundaries
- Factors we take into consideration:
 - New residential construction
 - Diversity
 - Geographic barriers
 - Travel distance





Methodology Step 3: Drawing the Zone Lines



Map legend

-  Current Zone Line
-  Proposed Zone Line

Projected Kindergarten students

-  >10
-  5.1 to 10
-  1.1 to 5
-  0 to 1