



## Office of District Planning

*Proposal for elementary school rezoning presented to CEC 11 by the Community School District Superintendent*



**Department of  
Education**

*Carmen Fariña, Chancellor*

*October 9, 2014*

# Table of Contents

	Slide #
I. Rationale for Rezoning . . . . .	3
II. Overview of the Rezoning Process . . . . .	4
III. Guiding Policies and Principles . . . . .	5
IV. Methodology . . . . .	6-7
a. Determining the Target K Zone Size	
b. Determining the Zone Lines	
V. Schools Affected by Rezoning . . . . .	8
VI. Impact of Rezoning . . . . .	9-10
VII. Proposed Zone Lines . . . . .	11
VIII. Contact Information for Comments . . . . .	12
IX. Appendix . . . . .	13-17
a. Admissions Process	
b. Planned Section Counts	
c. Planned Average Class Sizes	
d. Zoned Percentage Rates	
e. Demographic Changes	

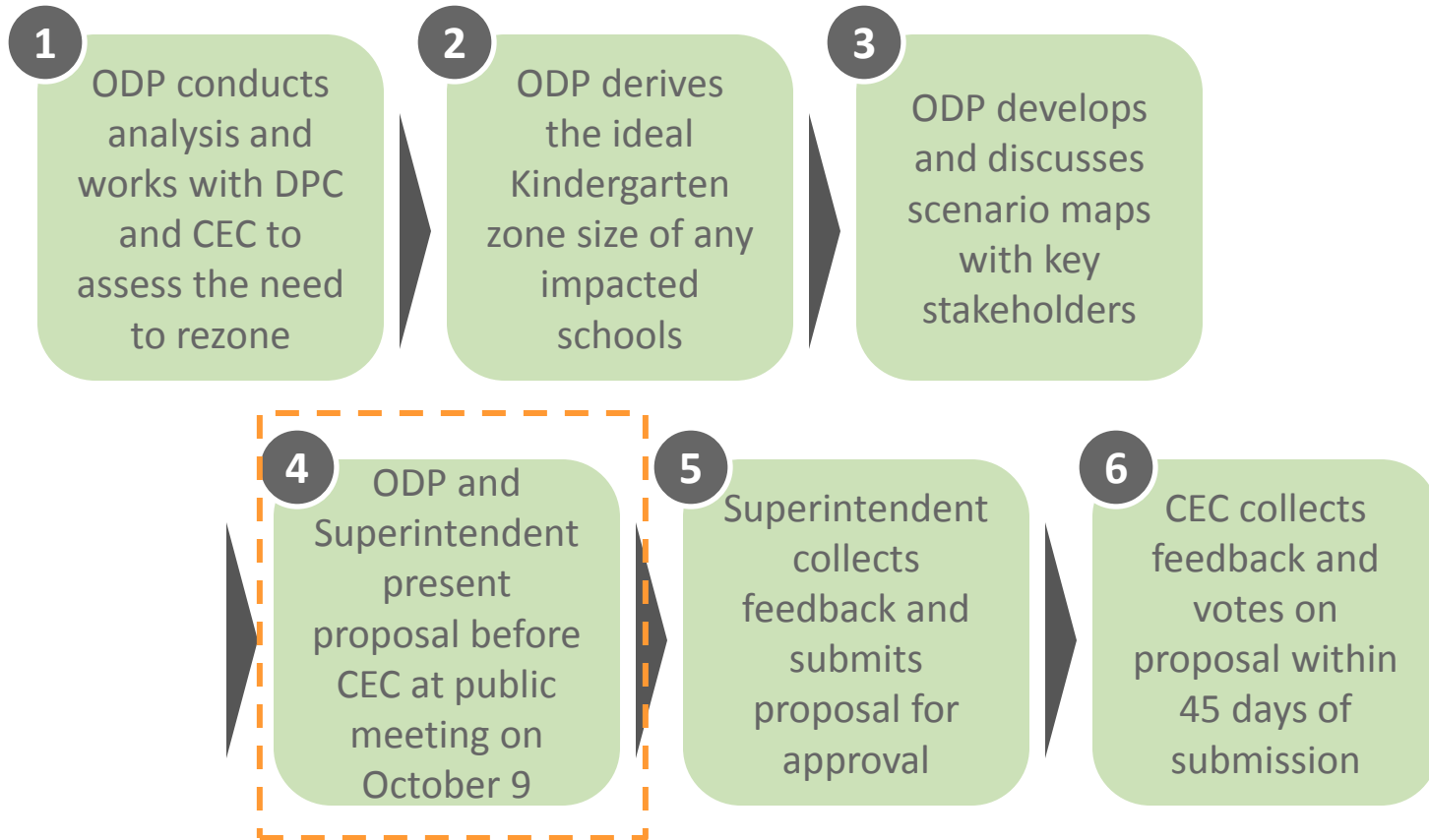
# Rationale for Rezoning

---

- To create a zone for an elementary school in new building X314, located at 4520 Matilda Avenue, slated to open for the 2015-2016 school year.
- To alleviate overcrowding at P.S. 16.
- To alleviate P.S. 16's zone so that the school will eventually no longer need the capacity of its Temporary Classroom Units (TCUs).



# Overview of Rezoning Process



# Guiding Policies and Principles

---

- Pending approval by the CEC, the proposed changes would take effect for the 2015-2016 academic year.
- Pending approval by the CEC, the proposed changes would only impact incoming Pre-Kindergarten, Kindergarten, or new students to the system. All currently enrolled students may remain in their school until graduation.
- Sibling grandfathering, if approved by CEC 11, would be applicable for kindergarten students. Therefore, students who reside within the rezoned area and have currently enrolled siblings who will be in grades K-5 at P.S. 16 at the time they start kindergarten, will retain their zoned sibling priority when applying for kindergarten.
- See Appendix A for the admissions process as outlined in the Chancellor's regulation A-101.
- The Office of Pupil Transportation (OPT) will follow standard procedure to determine bus service eligibility of general education students, as outlined by Chancellor's regulation A-801.



# Methodology – Determining the Target K Zone Size

## **Seat Supply: What is the capacity of each school?**

Specifically, how many instructional sections can each building accommodate?

We assess capacity based on:

- The number of full-size classrooms available in the building;
- The number of cluster rooms to which a school is entitled; and
- Historical enrollment increases and decreases at each grade level.

## **Seat Demand: How many students do we anticipate?**

We assess demand – both from inside and outside the zone – based on:

- The historical number of Kindergarten students living in the zone;
- Historical Kindergarten waitlists and capping activity;
- Historical average class sizes;
- Historical zone retention rates (the percent of students who live in the zone and attend their zoned school);
- Historical zone enrollment rates (the percent of enrolled students who are also zoned to that school); and
- Anticipated Kindergarten growth, based on current/future housing developments.



# Methodology – Determining the Zone Lines

**To the extent possible, we draw zone lines in a way that:**

- Achieves the targeted Kindergarten zone size for all affected schools;
- Addresses concerns of the local community;
- Accounts for residential construction and population growth within the affected areas;
- Avoids forcing students to cross geographic barriers (e.g. highways , district lines, etc.);
- Centrally locates the school within the zone;
- Minimizes the distance students must travel to attend their zoned school; and
- Maintains the diversity of schools.



# Schools Affected by Rezoning

In the year prior to implementation:

DBN	School Name	Grade Span	Total Enrollment <sup>1</sup>	Total Org Capacity <sup>2</sup>	Utilization %
11X016	P.S. 016 Wakefield	K-5	546	400	140%



**Department of  
Education**

*Carmen Fariña, Chancellor*

(1) Based on 2014 Budget Projections; includes pre-kindergarten enrollment.

(2) Based on 2013-2014 Blue Book Capacity. Does not include TCU capacity.



# Impact of Rezoning – Kindergarten Zone Size

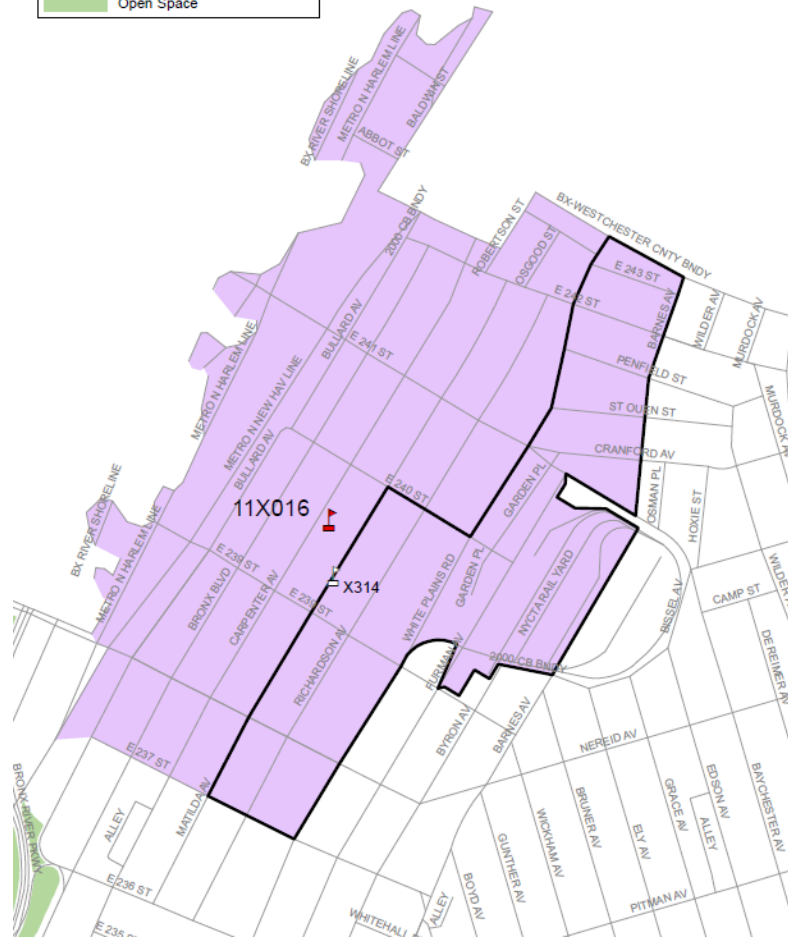
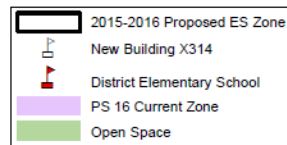
School Name	Current K Zone Size <sup>1</sup>	Planned K Zone Size	Change in K Zone Size
P.S. 016 Wakefield	98	45-55	↓
New School @ X314	-	45-55	-

# Impact of Rezoning – Total Enrollment & Utilization

School Name	Planned				Change
	Grade Span at Scale	Total Enrollment <sup>1</sup>	Total Org Capacity <sup>2</sup>	Utilization Rate	
P.S. 016 Wakefield	K-5	300-400	400	90%-100%	↓
New School @ X314	K-5	215-315	255 <sup>3</sup>	100%-110% <sup>4</sup>	-

- (1) See appendix for assumed number of sections and average class sizes used to derive total enrollment. P.S. 16 planned enrollment includes pre-kindergarten.
- (2) Based on 2013-2014 Blue Book Capacity
- (3) Based on the School Construction Authority's (SCA) Building Completions Report. Preliminary capacity is subject to change.
- (4) Although a utilization rate in excess of 100% may suggest that a building will be over-utilized or over-crowded in a given year, this rate does not account for the fact that rooms may be programmed for more efficient or different uses than the standard assumptions in the utilization calculation

# Proposed Zone Lines



(1) All zone lines run down the center of the street unless otherwise specified.

# Contact Information and Next Steps

- Community sends feedback to Superintendent, CEC, and ODP
- The CEC is expected to vote on October 21, 2014.

Community  
Superintendent,  
Elizabeth A. White

Phone: (718) 519 – 2620  
Email: [EWhite2@schools.nyc.gov](mailto:EWhite2@schools.nyc.gov)  
Subject: D11 Zoning

CEC 11  
Community  
Education Council

Email: [CEC11@schools.nyc.gov](mailto:CEC11@schools.nyc.gov)  
Subject: D11 Zoning

ODP  
Office of District  
Planning

Email: [BronxZoning@schools.nyc.gov](mailto:BronxZoning@schools.nyc.gov)  
Subject: D11 Zoning

# Appendix A – Admissions Process<sup>1</sup>

Students will be admitted to kindergarten based upon the following priorities:

- 1 - Zoned students whose verified siblings are pre-registered or enrolled at the time of application submission and will be enrolled in grades K-5 in the school at the start of the following school year
- 2 - Zoned students other than those in (1) above applying to the zoned school
- 3 - Students whose verified siblings are pre-registered or enrolled at the time of application submission and will be enrolled in grades K-5 in the school at the start of the following school year who are not zoned to the school,
  - a. Within District first, then
  - b. Out of District
- 4 - Students currently attending the school's pre-kindergarten program who reside outside the school's zone, *without* a sibling who will be in grades K-5 at the school in the following school year,
  - a. Within District first, then
  - b. Out of District
- 5 - Students other than those in (3a) and (4a) above who are residents of that district
- 6 - Students other than those in (3b) and (4b) who are residents of another district

(1) Please refer to Chancellor's Regulation A-101 for further information.

# Appendix B – Planned Section Counts

GE/ICT

School Name	Pre-Kindergarten <sup>1</sup>	Kindergarten	Grades 1-5	Self-Contained
P.S. 016 Wakefield	3	2	2	3
New School @ X314	-	2	2	2

- (1) Pre-Kindergarten is a program that can be offered both half-day and full-day. Planned section counts represent the full-day equivalency. Pre-Kindergarten sections are based on available funding, student enrollment, and space availability.

# Appendix C – Planned Average Class Sizes

GE/ICT

School Name	Pre-Kindergarten	Kindergarten	Grades 1-5	Self-Contained
P.S. 016 Wakefield	18	20-25	20-25	12
New School @ X314	-	20-25	20-25	12



# Appendix D – Zone Retention and Enrollment Rates

School Name	Capped	K-Waitlist	Zone Retention Rate for Kindergarten		Zone Enrollment Rate for Kindergarten	
			Current <sup>1</sup>	Planned <sup>2</sup>	Current	Planned
P.S. 016 Wakefield	Yes	No	81%	80%-90%	99%	90%-100%
New School @ X314	-	-	-	80%-90%	-	90%-100%



- (1) The current rates (both zone retention and zone enrollment) are based on the 2013 Audited Register as of October 31, 2013.
- (2) Planned retention rates are based on various factors, including but not limited to the historical number of zoned Kindergarten students that were waitlisted or overflowed due to capping.



# Appendix E – Demographic Changes

School Name	Zone Percent Minority <sup>1</sup>	
	Current	Planned
P.S. 016 Wakefield	99%	95%-100%
New School @ X314	-	95%-100%

- (1) Zone Percent Minority figures are based on the ethnicity of zoned 6<sup>th</sup> grade students from the 2013 Audited Register as of October 31, 2013. Students identified as “White – not of Hispanic origin” are not counted as minority.