



# Office of Portfolio Management

*Proposal for Rezoning  
Presented to CEC 13*



**Department of  
Education**

*Dennis M. Walcott, Chancellor*

**November 20, 2012**

# Table of Contents

	Slide #
I. Rationale for Rezoning . . . . .	3
II. Overview of the Rezoning Process . . . . .	4
III. Guiding Policies and Principles . . . . .	5
IV. Schools Affected by Rezoning . . . . .	6
V. Proposed Zone Lines . . . . .	7
VI. Impact of Rezoning . . . . .	8-10
VII. Contact Information for Comments . . . . .	11
VIII. Appendix . . . . .	12-16
a. Admissions Process for P.S. 282	
b. Admissions Process for P.S. 133	
c. Planned Section Counts	
d. Planned Average Class Sizes	
e. Zoned Percentage Rates	



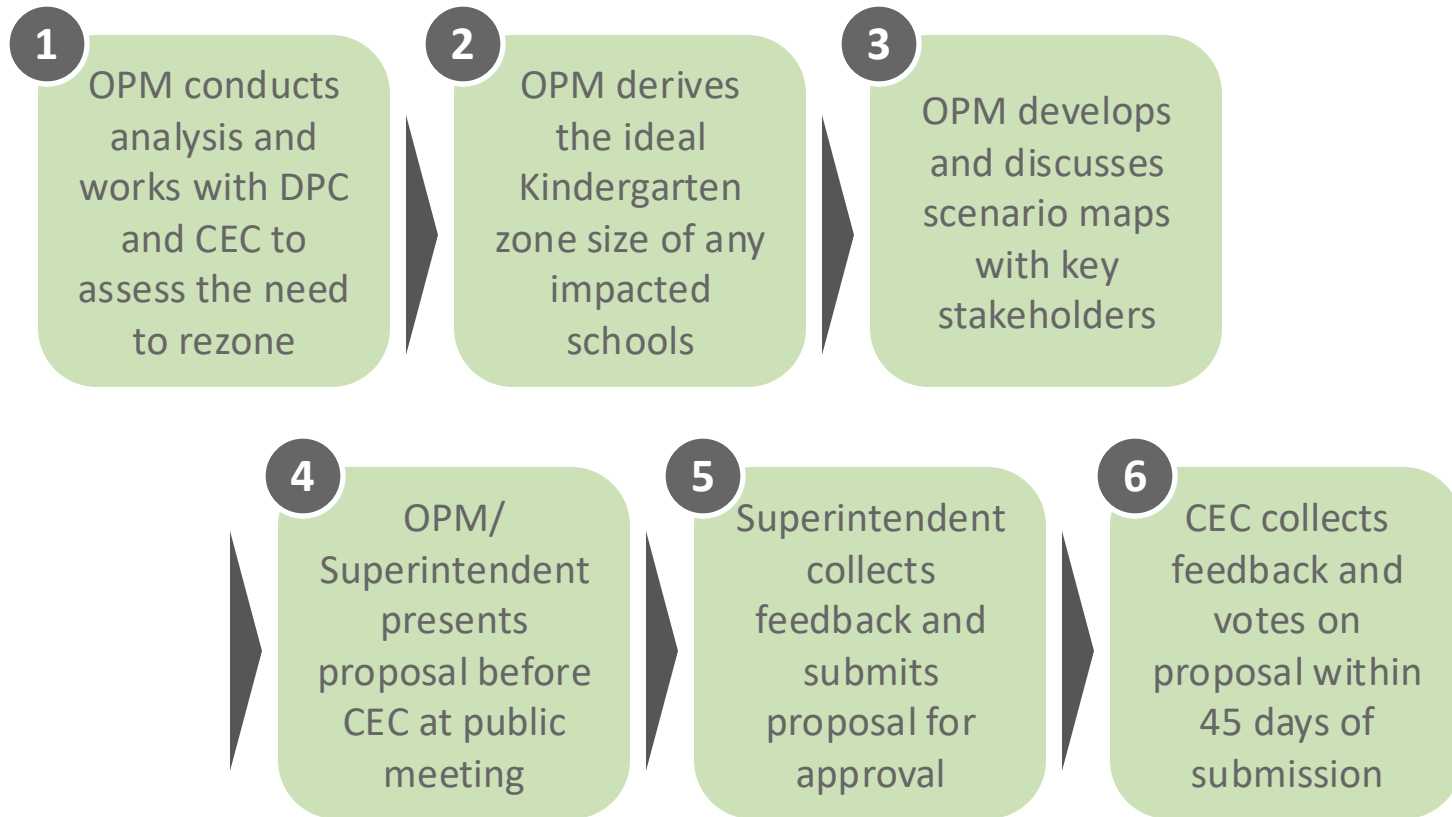
# Rationale for Rezoning

---

- P.S. 133 will move into a new building at 610 Baltic Street for the 2013-2014 academic year.
- The DOE is proposing that P.S. 133 adopts a District 13 Choice admissions method.
  - As a Choice elementary school option, more students across District 13 will have access to P.S. 133.
- If approved by the CEC, starting in the 2013-2014 school year, P.S. 133 will no longer be a zoned school. Students living in the current zone for P.S. 133 will be rezoned to a nearby school that has sufficient capacity, P.S. 282.



# Overview of Rezoning Process



# Guiding Policies and Principles

---

- Pending approval by the CEC, the proposed changes would take effect for the 2013-2014 academic year.
- Pending approval by the CEC, the proposed changes would only impact incoming kindergarten or new students to the system. All currently enrolled students may remain in their school until graduation.
- Sibling enrollment policies would remain in effect. Children currently living in the affected zones who would be zoned to another school as a result of this proposal would retain their enrollment status as in-zone siblings as long as they have an older sibling attending the school in grades 1-5 during the year in which the student would enroll in kindergarten.
- See Appendix A for the admissions process as outlined in the Chancellor's regulation A-101.



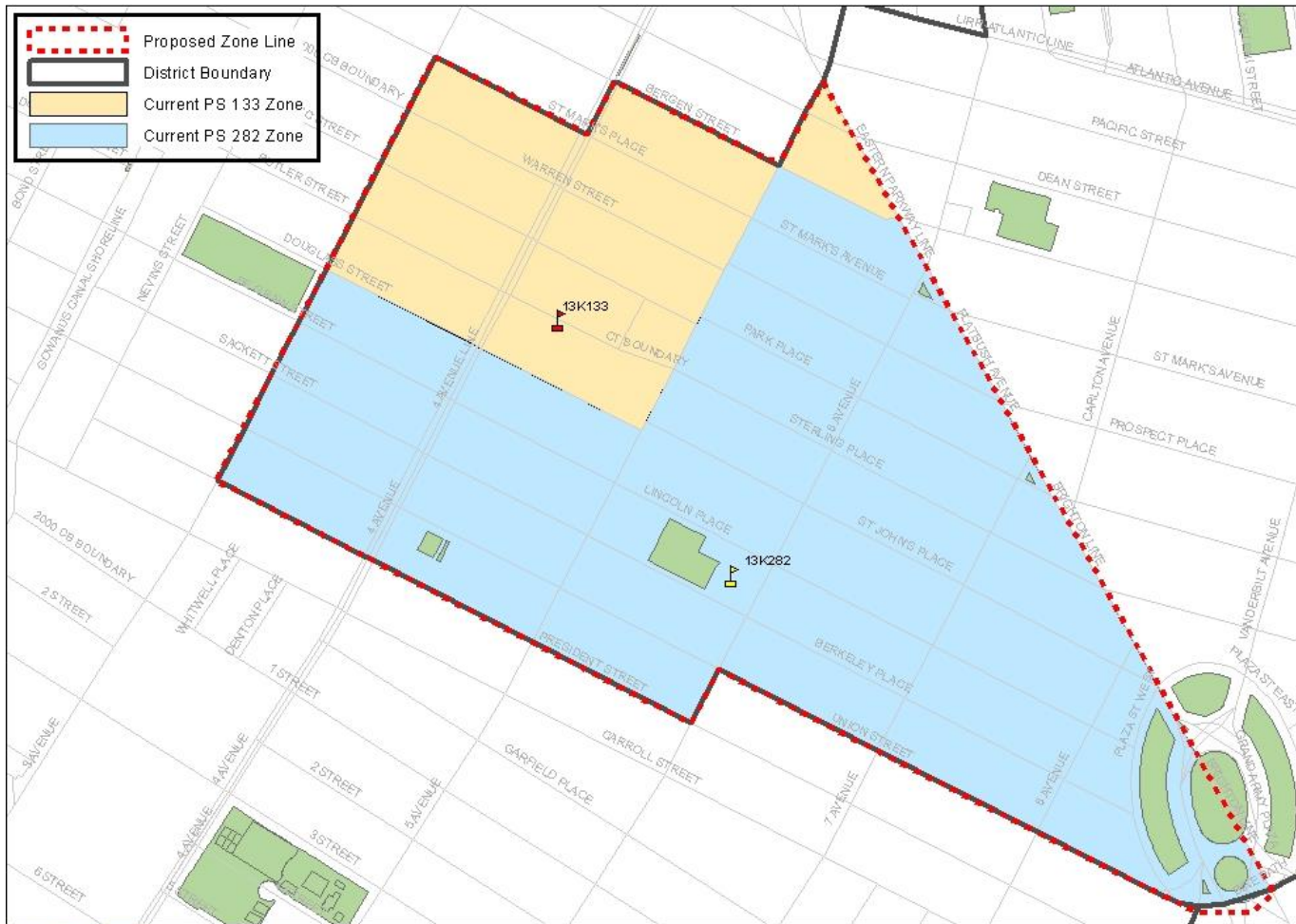
# Schools Affected by Rezoning

DBN	School Name	Grade Span	2011-12 Enrollment	Total Capacity <sup>1</sup>	2011-12 Utilization %
13K282	P.S. 282 Park Slope	K-8	1,033	939	110%
13K133	P.S. 133 William A. Butler	K-5	301	P. S. 133 is temporarily sited at K763 (St. Thomas Aquinas) <sup>2</sup>	

(1) Based on the 2011-2012 Blue Book.

(2) P.S. 133's new building is projected to have a capacity of 935.

# Proposed Zone Lines



# Impact of Rezoning

School Name	Current K Zone Size	Planned K Zone Size	Change in K Zone Size
P.S. 282	50-60	70-90	↑
P.S. 133	20-30	Unzoned	-



# Impact of Rezoning (cont'd)

School Name	Current <sup>1</sup>		Planned		Change in K Enrollment
	# of GE/ICT K Sections	K Enrollment	# of GE/ICT K Sections	K Enrollment	
P.S. 282	5	107	5	105-115	No Change <sup>2</sup>
P.S. 133	3	58	6	140-150 <sup>3</sup>	↑

- (1) Kindergarten enrollment is based on 2011-2012 Audited Register
- (2) Although P.S. 282's kindergarten zone size is expected to increase, we expect that P.S. 282 will be able to maintain their current enrollment levels by increasing zoned enrollment from 18% to approximately 30-35%.
- (3) Approximately 1/3 of kindergarten seats will be targeted for District 13 applicants and approximately 2/3 of kindergarten seats will be targeted for District 15 applicants.

# Impact of Rezoning (cont'd)

	Current <sup>1</sup>		Planned <sup>2</sup>		
School Name	Total Enrollment	Utilization Rate	Total Enrollment	Utilization Rate	Change
P.S. 282	1,033	110%	985-1,080	105%-115%	No Change
P.S. 133	301	N/A	820-900 <sup>3</sup>	95%-105%	N/A

(1) Total enrollment is based on 2011-2012 Audited Register.

(2) See appendix for the assumed number of sections and average classes used to derive total enrollment.

(3) Just over 1/3 of total seats will be targeted for District 13 applicants and just under 2/3 of total seats will be targeted for District 15 applicants.

# Contact Information for Comments

---

Community  
Superintendent

Phone: (718) 636 – 3237  
Email: [BFreeman6@schools.nyc.gov](mailto:BFreeman6@schools.nyc.gov)  
Subject: District 13 Zoning

CEC  
Community  
Education Council

Email: [CEC13@schools.nyc.gov](mailto:CEC13@schools.nyc.gov)  
Subject: District 13 Zoning

OPM  
Office of Portfolio  
Management

Email: [brooklynzoning@schools.nyc.gov](mailto:brooklynzoning@schools.nyc.gov)  
Subject: District 13 Zoning



# Appendix A – Admissions Process for P.S. 282

Students are (and would continue to be) enrolled in zoned New York City elementary schools by the following priority<sup>1</sup>:

- 1 - Zoned students with verified siblings who will be enrolled in grades 1-5 in the school as of September 2013
- 2 - Zoned students without siblings applying to the zoned school
- 3 - Non-zoned students with verified siblings, who will be enrolled in grades 1-5 in the school as of September 2013,
  - a. Within District first, then
  - b. Out of District
- 4 - Non-zoned students without siblings:
  - a. Within District first, then
  - b. Out of District

(1) Please be advised that on October 26, 2012 the DOE posted proposed amendments to Chancellor's Regulation A-101, which will be voted on by the Panel for Educational Policy on December 20<sup>th</sup>. If approved, the admissions policy for elementary school students will be impacted for the 2013-2014 school year and thereafter.

# Appendix B – Admissions Process for P.S. 133

Students are enrolled in District 13 Choice elementary schools by the following priority<sup>1</sup>:

- 1 – District 13 students with verified siblings who will be enrolled in grades 1-5 in the school as of September 2013
- 2 – Non-District 13 students with verified siblings, who will be enrolled in grades 1-5 in the school as of September 2013
- 3 – District 13 students without siblings applying to the school
- 4 - Non-District 13 students without siblings

(1) Please be advised that on October 26, 2012 the DOE posted proposed amendments to Chancellor's Regulation A-101, which will be voted on by the Panel for Educational Policy on December 20<sup>th</sup>. If approved, the admissions policy for elementary school students will be impacted for the 2013-2014 school year and thereafter.

# Appendix C – Planned Section Counts

## GE/ICT

School Name	Pre-K	Kindergarten	Grades 1-5	Grades 6-8	Self-Contained
P.S. 282	4	5	4-5	3-4	1-3
P.S. 133	2	6	5	-	1-3



# Appendix D – Planned Average Class Sizes

## GE/ICT

School Name	Pre-K	Kindergarten	Grades 1-5	Grades 6-8	Self-Contained
P.S. 282	18	22	25	25	12
P.S. 133	18	25	27	-	12



# Appendix E – Zone Retention and Enrollment Rates

School Name	Current Zone Retention Rate	Planned Zone Retention Rate	Current Zoned Enrollment Rate	Planned Zoned Enrollment Rate
P.S. 282	37%	50%	18%	35%
P.S. 133	46%	Un-zoned Choice	21%	Un-zoned Choice

- (1) The current rates are based on 2011-12 Audited Register.
- (2) Planned rates are based on various factors, including but not limited to an assumed reduction in out-of-zoned enrollment.