



# Office of Portfolio Management

*Proposal for Rezoning  
presented to CEC 15 by the  
Community School District  
Superintendent*



**Department of  
Education**

*Dennis M. Walcott, Chancellor*

**October 22, 2013**

# Table of Contents

	Slide #
I. Rationale for Rezoning . . . . .	3
II. Overview of the Rezoning Process . . . . .	4
III. Guiding Policies and Principles . . . . .	5
IV. Methodology . . . . .	6-7
a. Determining the Target K Zone Size	
b. Determining the Zone Lines	
V. Schools Affected by Rezoning . . . . .	8-9
VI. Impact of Rezoning . . . . .	10-12
VII. Proposed Zone Lines . . . . .	13
VIII. Contact Information for Comments . . . . .	14
IX. Appendix . . . . .	15-18
a. Admissions Process	
b. Planned Section Counts	
c. Planned Average Class Sizes	
d. Zoned Percentage Rates	



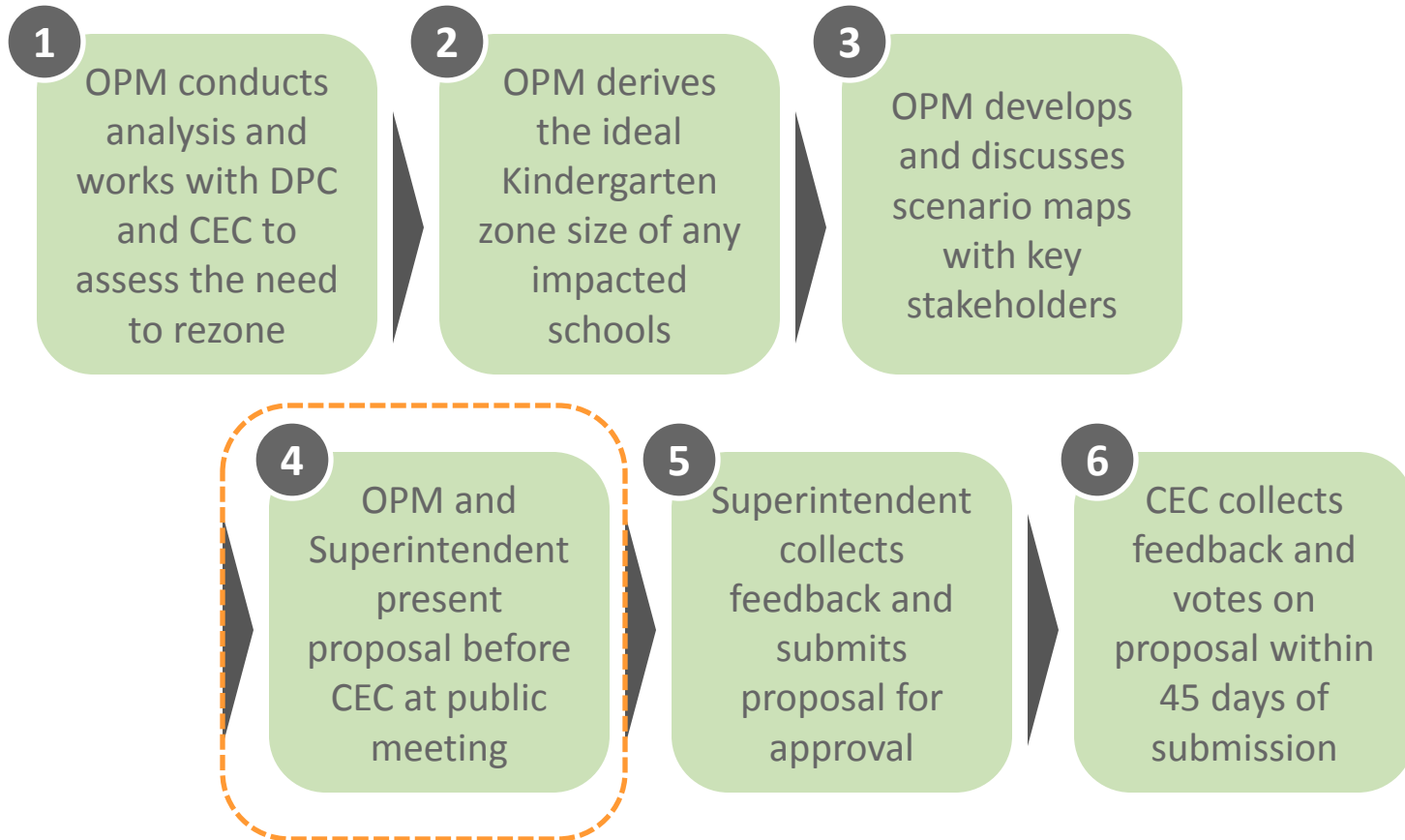
# Rationale for Rezoning

---

- To create a zone for a new elementary school, Sunset Park Avenues Elementary School (15K516), when it moves into its long-term location in the St. Michael's building (K333), located at 4222 4<sup>th</sup> Avenue, in September 2014.
  - This school year, 2013-2014, Sunset Park Avenues Elementary School is serving kindergarten students who could not be accommodated at their zoned Sunset Park elementary schools. Sunset Park Avenues Elementary School is temporarily sited at K136, located at 4004 4<sup>th</sup> Avenue.
- To reduce the need to waitlist, cap, and overflow students from P.S. 94 and P.S. 169, offering more stability to students and families and decreasing the need to enroll students who reside in Sunset Park at other schools across District 15.
  - With new seat availability created by Sunset Park Avenues Elementary School along with an efficient use of space at P.S. 1 and P.S. 24, the need to waitlist and overflow students across the district can be reduced.



# Overview of Rezoning Process



# Guiding Policies and Principles

- Pending approval by the CEC, the proposed changes would take effect for the 2014-2015 academic year.
- Pending approval by the CEC, the proposed changes would only impact incoming Kindergarten or new students to the system. All currently enrolled students may remain in their school until graduation.
- Currently zoned children, whose verified siblings are enrolled in a school impacted by a re-zoning plan adopted by the CEC, will maintain zoned sibling priority to that impacted school<sup>1</sup>.
- See Appendix A for the admissions process as outlined in the Chancellor's regulation A-101.
- The Office of Pupil Transportation (OPT) will follow standard procedure to determine bus service eligibility of students, as outlined by Chancellor's regulation A-801.

(1) Pending approval of the amendment to Chancellor's regulation A-101 on October 30, 2013.

# Methodology – Determining the Target K Zone Size

## **Seat Supply: What is the capacity of each school?**

Specifically, how many instructional sections can each building accommodate?

We assess capacity based on:

- The number of full-size classrooms available in the building;
- The number of cluster rooms to which a school is entitled; and
- Historical enrollment increases and decreases at each grade level.

## **Seat Demand: How many students do we anticipate?**

We assess demand – both from inside and outside the zone – based on:

- The historical number of Kindergarten students living in the zone;
- Historical Kindergarten waitlists and capping activity;
- Historical average class sizes;
- Historical zone retention rates (the percent of students who live in the zone and attend their zoned school);
- Historical zone enrollment rates (the percent of enrolled students who are also zoned to that school); and
- Anticipated Kindergarten growth.



# Methodology – Determining the Zone Lines

**To the extent possible, we draw zone lines in a way that:**

- Achieves the targeted Kindergarten zone size for all affected schools;
- Addresses concerns of the local community;
- Accounts for residential construction and population growth with the affected areas;
- Accounts for geographic barriers (e.g. highways, district lines, etc);
- Centrally locates the school within the zone;
- Maintains the diversity of schools; and
- Minimizes the distance students must travel to attend their zoned school.



# Schools Affected by Rezoning

In the year prior to implementation:

DBN	School Name	Grade Span	Total Enrollment <sup>1</sup>	Total Org Capacity <sup>2</sup>	Utilization %	Zone % Minority <sup>3</sup>
15K169	P.S. 169 Sunset Park	K-5	1,638	1,158	141%	93%
15K094	P.S. 94 The Henry Longfellow	K-5	1,553	1,086	143%	96%
15K024*	P.S. 24	K-5	681	765	89%	98%
15K001*	P.S. 1 The Bergen	K-5	1,271	1,038	122%	95%
15K516	Sunset Park Avenues Elementary School	K	75	N/A	N/A	N/A

\* This school will offer a Pre-Kindergarten program in the 2013-2014 school year.

(1) Based on 2013-2014 Budget Register Projections.

(2) Based on 2012-2013 Blue Book Capacity

(3) Based on 2012-2013 Audited Register. Zone Percent Minority figures are based on the ethnicity of zoned Kindergarten students as of the 2012 Audited Register. Students identified as “White – not of Hispanic origin” are not counted as minority.



Department of  
Education

Dennis M. Walcott, Chancellor

# Schools Affected by Rezoning

In the year schools have reached full scale:

DBN	School Name	Grade Span	Projected Total Enrollment <sup>1</sup>	Total Org Capacity <sup>2</sup>	Projected Utilization %	Zone % Minority <sup>3</sup>
15K169	P.S. 169 Sunset Park	K-5	1,520-1,600	1,145	130%-140%	93%
15K094	P.S. 94 The Henry Longfellow	K-5	1,460-1,535	1,084	130%-140%	96%
15K024*	P.S. 24	K-5	750-820	745	100%-110%	97%
15K001*	P.S. 1 The Bergen	K-5	1,290-1,365	1,064	125%-135%	96%
15K516	Sunset Park Avenues Elementary School	K-5	385-450	332	115%-135%	94%

\* This school will continue to offer a Pre-Kindergarten program subject to capacity, funding, and demand.

(1) See appendix for planned number of sections and average class sizes used to derive total enrollment.

(2) The capacity for all schools is based on 2011-2012 Blue Book Capacity. The capacity of Sunset Park Avenues Elementary School (15K516) once it moves to its long-term location in building K333 is based on the School Construction Authority Building Completions report as of December 5, 2012.

(3) Based on 2012-2013 Audited Register. Zone Percent Minority figures are based on the ethnicity of zoned Kindergarten students as of the 2012 Audited Register. Students identified as "White – not of Hispanic origin" are not counted as minority.

# Impact of Rezoning – Kindergarten Zone Size

School Name	Current K Zone Size <sup>1</sup>	Planned K Zone Size	Change in K Zone Size
P.S. 169 Sunset Park	337	260-270	↓
P.S. 94 The Henry Longfellow	384	320-330	↓
P.S. 24	127	135-145	↑
P.S. 1 The Bergen	176	215-225	↑
Sunset Park Avenues Elementary School	New School	75-85	New School

# Impact of Rezoning – Kindergarten Sections

School Name	Current <sup>1</sup>		Planned	
	# of GE/ICT K Sections	GE/ICT K Enrollment	# of GE/ICT K Sections	GE/ICT K Enrollment
P.S. 169 Sunset Park	9	227	9	215-225
P.S. 94 The Henry Longfellow	11	272	10-11	240-250
P.S. 24	5	106	5	115-125
P.S. 1 The Bergen	9	212	8-9	200-225
Sunset Park Avenues Elementary School	3	75	3	65-75

(1) Current Kindergarten section counts and enrollment are based on 2013-2014 Budget Register Projections.



Department of  
Education

Dennis M. Walcott, Chancellor

# Impact of Rezoning – Total Enrollment & Utilization

School Name	Current		Planned	
	Total Enrollment <sup>1</sup>	Utilization Rate	Total Enrollment <sup>2</sup>	Utilization Rate
P.S. 169 Sunset Park	1,638	143%	1,520-1,600	130%-140%
P.S. 94 The Henry Longfellow	1,553	143%	1,460-1,535	130%-140%
P.S. 24	681	91%	750-820	100%-110%
P.S. 1 The Bergen	1,271	119%	1,300-1,385	120%-130%
Sunset Park Avenues Elementary School	75 (K only)	N/A	385-450 (K-5)	115%-135%



Department of  
Education

Dennis M. Walcott, Chancellor

- (1) The current total enrollment is based on 2013-2014 Budget Register Projections. Projection figures represent the full-day equivalency Pre-Kindergarten.
- (2) See appendix for assumed number of sections and average class sizes used to derive total enrollment.

# Proposed Zone Lines



(1) All zone lines run down the center of the street unless otherwise specified.

# Contact Information for Comments

Community  
Superintendent

Phone: (718) 935 – 4317  
Email: [askop@schools.nyc.gov](mailto:askop@schools.nyc.gov)  
Subject: D15 Elementary School Zoning

CEC  
Community  
Education Council

Email: [CEC15@schools.nyc.gov](mailto:CEC15@schools.nyc.gov)  
Subject: D15 Elementary School Zoning

OPM  
Office of Portfolio  
Management

Email: [BrooklynZoning@schools.nyc.gov](mailto:BrooklynZoning@schools.nyc.gov)  
Subject: D15 Elementary School Zoning



Department of  
Education

Dennis M. Walcott, Chancellor

# Appendix A – Admissions Process<sup>1</sup>

Students will be enrolled in New York City elementary schools by the following priority:

- 1 - Zoned students whose verified siblings are pre-registered or enrolled at the time of application submission and will be enrolled in grades K-5 in the school at the start of the following school year
- 2 - Zoned students other than those in (1) above applying to the zoned school
- 3 - Students whose verified siblings are pre-registered or enrolled at the time of application submission and will be enrolled in grades K-5 in the school at the start of the following school year who are not zoned to the school,
  - a. Within District first, then
  - b. Out of District
- 4 - Students currently attending the school's pre-kindergarten program who reside outside the school's zone, *without* a sibling who will be in grades K-5 at the school in the following school year,
  - a. Within District first, then
  - b. Out of District
- 5 - Students other than those in (3a) and (4a) above who are residents of that district
- 6 - Students other than those in (3b) and (4b) who are residents of another district



# Appendix B – Planned Section Counts

GE/ICT

School Name	Pre-Kindergarten <sup>1</sup>	Kindergarten	Grades 1-5	Self-Contained
P.S. 169 Sunset Park	-	8-9	9-10	3
P.S. 94 The Henry Longfellow	-	10	9	1
P.S. 24	1	5	5	1
P.S. 1 The Bergen	8	8-9	7-8	4
Sunset Park Avenues Elementary School	-	3	2-3	1

(1) Pre-Kindergarten is a program that can be offered both half-day and full-day. Planned section counts represent the full-day equivalency.

# Appendix C – Planned Average Class Sizes

GE/ICT

School Name	Pre-Kindergarten	Kindergarten	Grades 1-5	Self-Contained
P.S. 169 Sunset Park	-	25	28	12
P.S. 94 The Henry Longfellow	-	25	28	12
P.S. 24	18	25	26	12
P.S. 1 The Bergen	18	25	28	12
Sunset Park Avenues Elementary School	-	25	28	12



Department of  
Education

Dennis M. Walcott, Chancellor

# Appendix C – Zone Retention and Enrollment Rates

School Name	Capped	K-Waitlist	Zone Retention Rate for Kindergarten		Zone Enrollment Rate for Kindergarten	
			Current <sup>1</sup>	Planned <sup>2</sup>	Current	Planned <sup>3</sup>
P.S. 169 Sunset Park	Yes	Yes	63%	75%	93%	95%
P.S. 94 The Henry Longfellow	Yes	No	66%	75%	92%	95%
P.S. 24	No	No	79%	80%	94%	95%
P.S. 1 The Bergen	Yes	No	86%	90%	70%	90%
Sunset Park Avenues Elementary School	New School	New School	N/A	90%	N/A	95%

- (1) The current rates (both zone retention and zone enrollment) are based on the 2012-2013 Audited Register as of October 26, 2012.
- (2) Planned retention rates are based on various factors, including but not limited to the historical number of zoned Kindergarten students that were waitlisted or overflowed due to capping.
- (3) Planned enrollment rates are based on the assumed reduction in out-of-zoned enrollment.