



# Office of District Planning

*Rezoning Presentation to  
CEC 15*



**Department of  
Education**

*Carmen Fariña, Chancellor*

*October 8, 2014*

# Table of Contents

---

- I. Rationale for Rezoning
- II. Overview of the Rezoning Process
- III. Guiding Policies and Principles
- IV. Methodology
  - a. Determining the Target K Zone Size
  - b. Determining the Zone Lines
- V. Schools Affected by Rezoning
- VI. Impact of Rezoning
- VII. Proposed Zone Lines
- VIII. Contact Information for Comments
- IX. Appendix
  - a. Admissions Process
  - b. Planned Section Counts
  - c. Planned Average Class Sizes
  - d. Zoned Percentage Rates

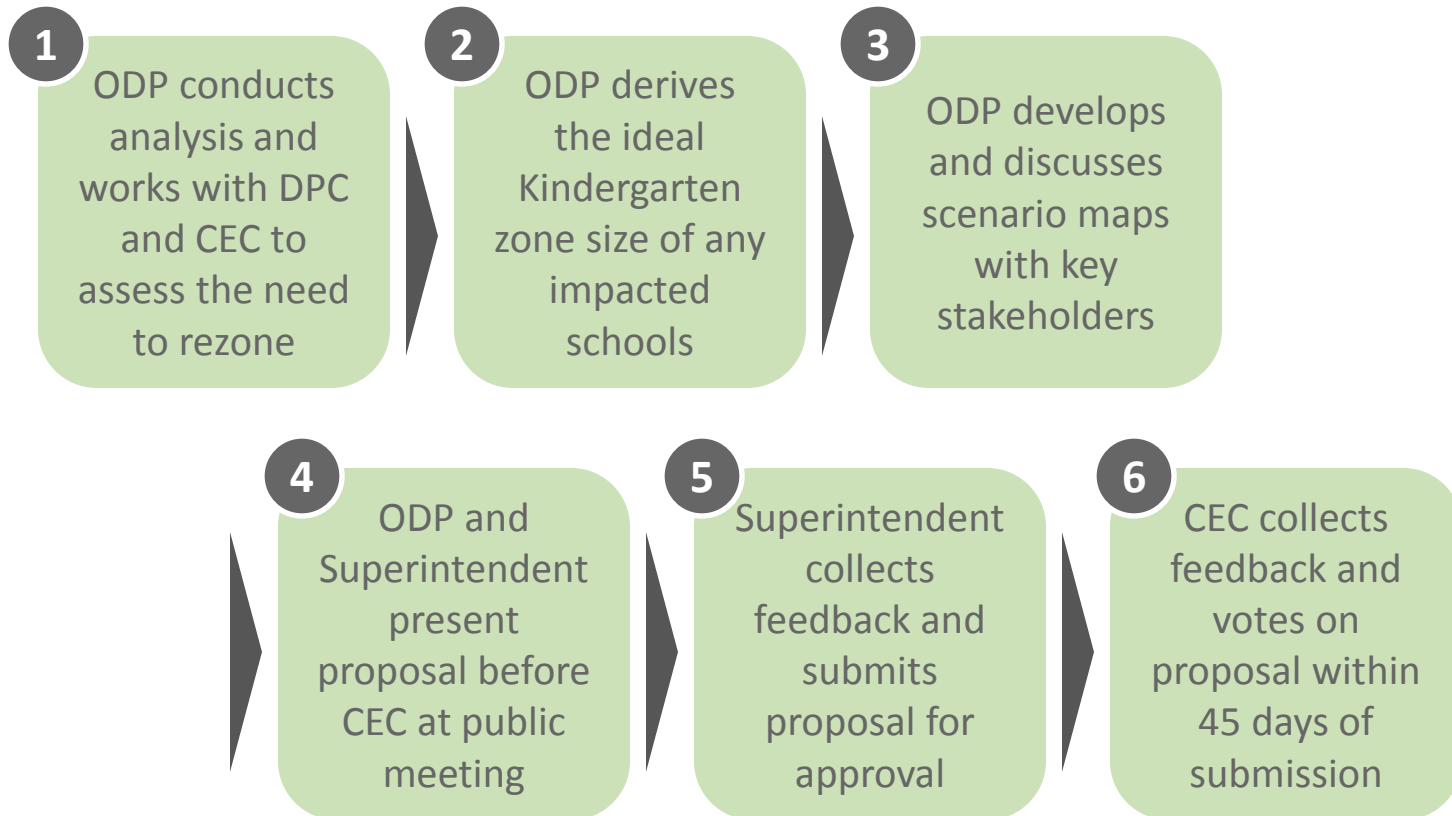


# Rationale for Rezoning

---

- To use new capacity at building K437 to reduce overcrowding at P.S. 131 and P.S. 154, and reduce or preclude the need to overflow students from these schools.
- To use existing capacity at P.S. 230 to reduce the need to cap and overflow students from Sunset Park and Borough Park.
- To expand the zone of P.S. 130. Beginning in 2015-2016, P.S. 130 will have additional capacity when K437 becomes a secondary site for P.S. 130.<sup>1</sup>

# Overview of Rezoning Process



# Guiding Policies and Principles

- Pending approval by the CEC, the proposed changes would take effect for the 2015-2016 academic year.
- Pending approval by the CEC, the proposed changes would only impact incoming Pre-Kindergarten, Kindergarten, or new students to the system or zone. All currently enrolled students may remain in their school until promotion to middle school.
- The resiting of P.S. 130's third through fifth grades from K130 to K437 will require the Chancellor's Regulation A-190 public review process. Implementation of the rezoning for 2015-2016 is contingent on approval of the resiting of P.S. 130's third through fifth grades by the Panel for Educational Policy.
- Sibling grandfathering, if approved by the CEC, would be applicable for kindergarten students. Therefore, students who reside within the rezoned area and have currently enrolled siblings who will be in grades K-5 at P.S. X at the time they start kindergarten, will retain their zoned sibling priority when applying for kindergarten.
- See Appendix A for the admissions process as outlined in the Chancellor's regulation A-101.
- The Office of Pupil Transportation (OPT) will follow standard procedure to determine bus service eligibility of general education students, as outlined by Chancellor's regulation A-801.

# Methodology – Determining the Target K Zone Size

## **Seat Supply: What is the capacity of each school?**

Specifically, how many instructional sections can each building accommodate?

We assess capacity based on:

- The number of full-size classrooms available in the building;
- The number of cluster rooms to which a school is entitled; and
- Historical enrollment increases and decreases at each grade level.

## **Seat Demand: How many students do we anticipate?**

We assess demand – both from inside and outside the zone – based on:

- The historical number of Kindergarten students living in the zone;
- Historical Kindergarten waitlists and capping activity;
- Historical average class sizes;
- Historical zone retention rates (the percent of students who live in the zone and attend their zoned school);
- Historical zone enrollment rates (the percent of enrolled students who are also zoned to that school); and
- Anticipated Kindergarten growth, based on current/future housing developments.



# Methodology – Determining the Zone Lines

**To the extent possible, we draw zone lines in a way that:**

- Achieves the targeted Kindergarten zone size for all affected schools;
- Addresses concerns of the local community;
- Accounts for residential construction and population growth within the affected areas;
- Avoids forcing students to cross geographic barriers (e.g. highways , district lines, etc.);
- Centrally locates the school within the zone;
- Minimizes the distance students must travel to attend their zoned school; and
- Maintains the diversity of schools.



# Schools Affected by Rezoning

In the year prior to implementation:

DBN	School Name	Grade Span	Total Enrollment <sup>1</sup>	Total Building Capacity <sup>2</sup>	Utilization %
15K154	P.S. 154 The Windsor Terrace School	K-5	555	398	139%
15K130	P.S. 130 The Parkside	K-5*	711	504	141%
15K230 <sup>3</sup>	P.S. 230 Doris L. Cohen	K-5*	1,322	1,193	111%
15K131	P.S. 131 Brooklyn	K-5*	1,176	803	146%



**Department of  
Education**

*Carmen Fariña, Chancellor*

(1) Based on 2014 Budget Projections

(2) Based on 2013-2014 Blue Book Capacity

(3) Includes enrollment and capacity figures from both P.S. 230's main building and annex

\*School also serves pre-k



# Impact of Rezoning – Kindergarten Zone Size

School Name	Current K Zone Size <sup>1</sup>	Planned K Zone Size	Change in K Zone Size
P.S. 154 The Windsor Terrace School	111	75-85	↓
P.S. 130 The Parkside	145	185-195	↑
P.S. 230 Doris L. Cohen	167	195-205	↑
P.S. 131 Brooklyn	199	155-165	↓

# Impact of Rezoning – Total Enrollment & Utilization

Building	School Name	Planned				Change
		Grade Span	Total Enrollment <sup>1</sup>	Total Building Capacity <sup>2</sup>	Utilization Rate	
K154	P.S. 154 The Windsor Terrace School	K-5	420-480	398	105%-120%	↓
K130	P.S. 130 The Parkside	K-2*	565-595	504	110%-120%	↓
K437 <sup>3,4,5</sup>	P.S. 130 The Parkside	3-5	510-540	757	115%-125%	N/A
	15KTBD	6-8	315-345			
	P053K@K437	K-8	55-65			
K230 & K908 <sup>6</sup>	P.S. 230 Doris L. Cohen	K-5*	1,495-1,555	1,193	125%-130%	↑
K131	P.S. 131 Brooklyn	K-5*	1,075-1,135	803	135%-140%	↓

(1) See appendix for assumed number of sections and average class sizes used to derive total enrollment.

(2) Based on 2013-2014 Blue Book Capacity

(3) Building K437 capacity and utilization are based on the designed capacity of K437 as reported by the SCA in the February 2013 Amendment of the FY 2010-2014 Capital Plan and the 2014-2015 Budget Register Projections.

(4) Enrollment and capacity figures for building K437 account for P.S. 130, the new middle school, and the D75 program.

(5) The partial re-siting and co-location of P.S. 130 is subject to approval by the Panel for Educational Policy.

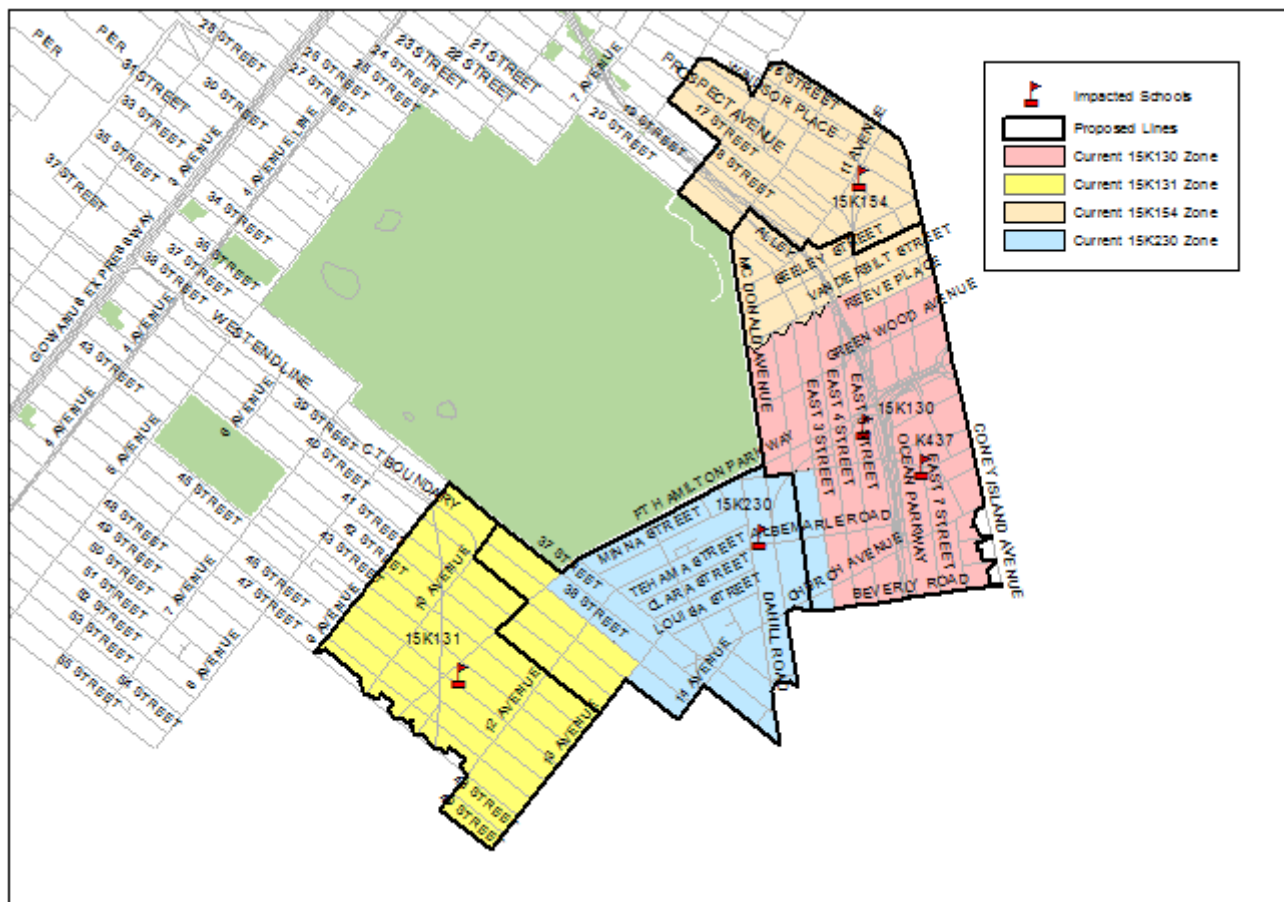
(6) Includes enrollment and capacity figures from both P.S. 230's main building and annex

\*School also serves pre-k



**Department of  
Education**

Carmen Fariña, Chancellor



- (1) All zone lines run down the center of the street unless otherwise specified. The south east zone of P.S. 130 and the south west zone of P.S. 131 currently contain some blocks where zone lines do not run down the center of the street.

# Contact Information and Next Steps

- Community sends feedback to Superintendent, CEC, and ODP
- The CEC is expected to vote in November (pending CEC notification)

Community  
Superintendent  
Anita Skop

Phone: (718) 935 – 4317  
Email: [askop@schools.nyc.gov](mailto:askop@schools.nyc.gov)  
Subject: Brooklyn Zoning

CEC  
Community  
Education Council

Email: [CEC15@schools.nyc.gov](mailto:CEC15@schools.nyc.gov)  
Subject: Brooklyn Zoning

ODP  
Office of District  
Planning

Email: [brooklynzoning@schools.nyc.gov](mailto:brooklynzoning@schools.nyc.gov)  
Subject: Brooklyn Zoning

# Appendix A – Admissions Process<sup>1</sup>

Students will be admitted to kindergarten based upon the following priorities:

- 1 - Zoned students whose verified siblings are pre-registered or enrolled at the time of application submission and will be enrolled in grades K-5 in the school at the start of the following school year
- 2 - Zoned students other than those in (1) above applying to the zoned school
- 3 - Students whose verified siblings are pre-registered or enrolled at the time of application submission and will be enrolled in grades K-5 in the school at the start of the following school year who are not zoned to the school,
  - a. Within District first, then
  - b. Out of District
- 4 - Students currently attending the school's pre-kindergarten program who reside outside the school's zone, *without* a sibling who will be in grades K-5 at the school in the following school year,
  - a. Within District first, then
  - b. Out of District
- 5 - Students other than those in (3a) and (4a) above who are residents of that district
- 6 - Students other than those in (3b) and (4b) who are residents of another district

(1) Please refer to Chancellor's Regulation A-101 for further information.

# Appendix B – Planned Section Counts

## GE/ICT

School Name	Pre-Kindergarten <sup>1</sup>	Kindergarten	Grades 1-5	Self-Contained
P.S. 154 The Windsor Terrace School	0	3	3	0
P.S. 130 The Parkside	2	7	6 - 7	0
P.S. 230 Doris L. Cohen	4	9	8	4
P.S. 131 Brooklyn	2	6	6	1

(1) Pre-Kindergarten is a program that can be offered both half-day and full-day. Planned section counts represent the full-day equivalency.



# Appendix C – Planned Average Class Sizes

GE/ICT

School Name	Pre-Kindergarten	Kindergarten	Grades 1-5	Self-Contained
P.S. 154 The Windsor Terrace School	0	25	25	0
P.S. 130 The Parkside	18	25	25-29	0
P.S. 230 Doris L. Cohen	18	25	28	12
P.S. 131 Brooklyn	18	25	30	12



# Appendix D – Zone Retention and Enrollment Rates

School Name	Capped	K-Waitlist	Zone Retention Rate for Kindergarten		Zone Enrollment Rate for Kindergarten	
			Current <sup>1</sup>	Planned <sup>2</sup>	Current	Planned
P.S. 154 The Windsor Terrace School	N	N	85%	85%	88%	90%
P.S. 130 The Parkside	N	N	64%	80%	78%	85%
P.S. 230 Doris L. Cohen	N	N	84%	90%	68%	80%
P.S. 131 Brooklyn	Y	N	80%	85%	92%	95%



- (1) The current rates (both zone retention and zone enrollment) are based on the 2013 Audited Register as of October 31, 2013.
- (2) Planned retention rates are based on various factors, including but not limited to the historical number of zoned Kindergarten students that were waitlisted or overflowed due to capping.



# Appendix E – Demographic Changes

School Name	Zone Percent Minority <sup>1</sup>	
	Current	Planned
P.S. 154 The Windsor Terrace School	29%	25%-30%
P.S. 130 The Parkside	56%	50%-55%
P.S. 230 Doris L. Cohen	84%	85%-90%
P.S. 131 Brooklyn	90%	85%-90%



(1) Zone Percent Minority figures are based on the ethnicity of zoned kindergarten students from the 2013 Audited Register as of October 31, 2013. Students identified as “White – not of Hispanic origin” are not counted as minority.