



Office of District Planning

*Rezoning Presentation to
CEC 20*

September 17, 2014



**Department of
Education**

Carmen Fariña, Chancellor

Table of Contents

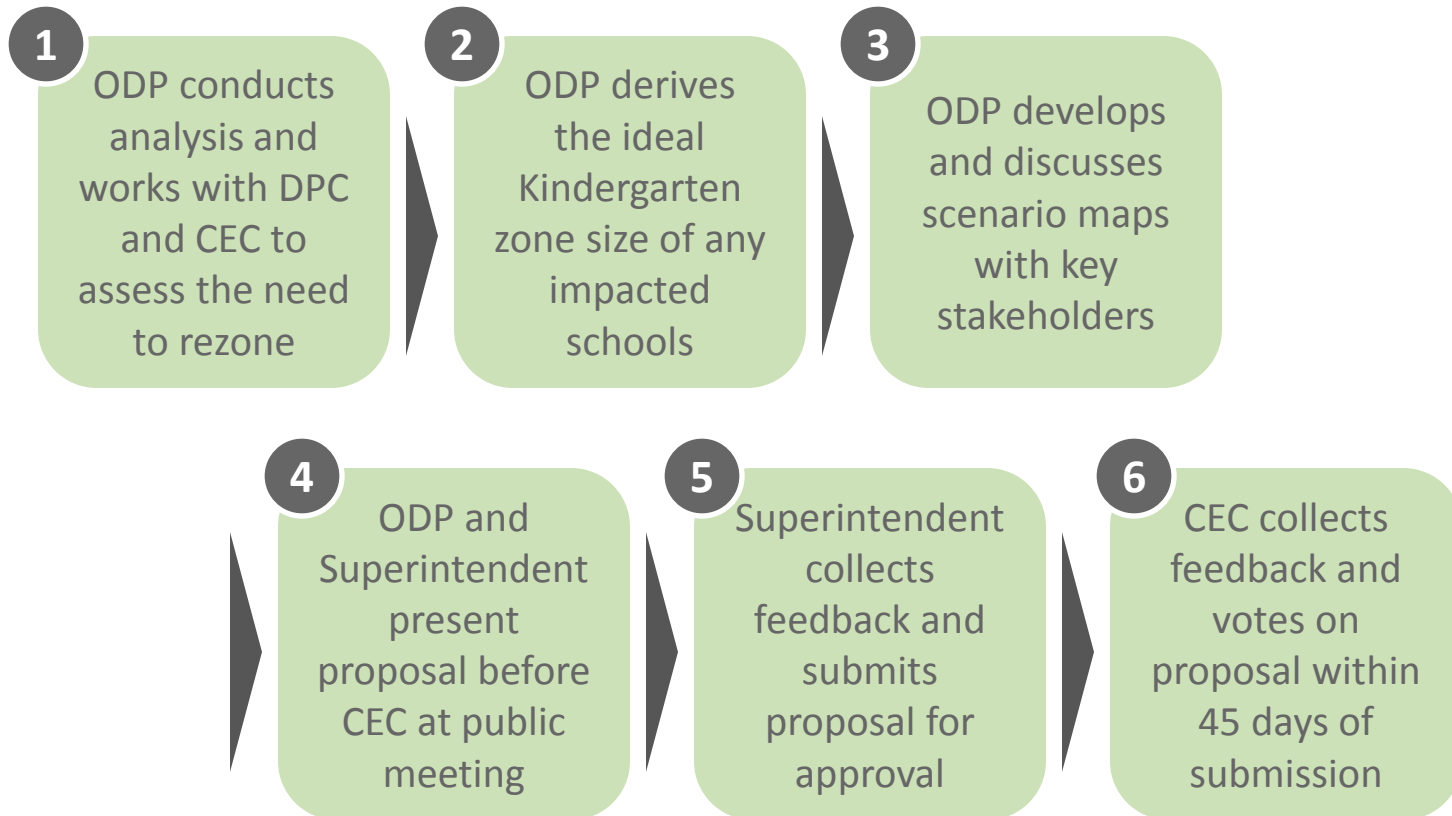
	Slide #
I. Rationale for Rezoning	3
II. Overview of the Rezoning Process	4
III. Guiding Policies and Principles	5
IV. Methodology	6-7
a. Determining the Target K Zone Size	
b. Determining the Zone Lines	
V. Schools Affected by Rezoning	8
VI. Impact of Rezoning	9-10
VII. Proposed Zone Lines	11
VIII. Contact Information for Comments	12
IX. Appendix	13-17
a. Admissions Process	
b. Planned Section Counts	
c. Planned Average Class Sizes	
d. Zoned Percentage Rates	

Rationale for Rezoning

- To use new capacity at building K768 to alleviate overcrowding and reduce the need to cap and overflow students from P.S. 176, and to alleviate overcrowding at P.S. 112
- To expand the zone of P.S. 112 and account for new capacity at building K768



Overview of Rezoning Process



Guiding Policies and Principles

- Pending approval by the CEC, the proposed changes would take effect for the 2015-2016 academic year.
- Pending approval by the CEC, the proposed changes would only impact incoming Pre-Kindergarten, Kindergarten, or new students to the system. All currently enrolled students may remain in their school until promotion to middle school.
- The resiting of PS. 112's kindergarten and first grade from K112 to K768 will require the Chancellor's Regulation A-190 public review process. Implementation of the rezoning for 2015-2016 is contingent on approval of the resiting of P.S. 112's grades K and 1 by the Panel for Educational Policy.
- Sibling enrollment policies would remain in effect. Children currently living in the affected zones who would be zoned to another school as a result of this proposal would retain their enrollment status as an in-zone sibling as long as they have an older sibling attending the school in grades 1-5 during the year in which the student would enroll in kindergarten.
- See Appendix A for the admissions process as outlined in the Chancellor's regulation A-101.
- The Office of Pupil Transportation (OPT) will follow standard procedure to determine bus service eligibility of general education students, as outlined by Chancellor's regulation A-801.

Methodology – Determining the Target K Zone Size

Seat Supply: What is the capacity of each school?

Specifically, how many instructional sections can each building accommodate?

We assess capacity based on:

- The number of full-size classrooms available in the building;
- The number of cluster rooms to which a school is entitled; and
- Historical enrollment increases and decreases at each grade level.

Seat Demand: How many students do we anticipate?

We assess demand – both from inside and outside the zone – based on:

- The historical number of Kindergarten students living in the zone;
- Historical Kindergarten waitlists and capping activity;
- Historical average class sizes;
- Historical zone retention rates (the percent of students who live in the zone and attend their zoned school);
- Historical zone enrollment rates (the percent of enrolled students who are also zoned to that school); and
- Anticipated Kindergarten growth, based on current/future housing developments.



Methodology – Determining the Zone Lines

To the extent possible, we draw zone lines in a way that:

- Achieves the targeted Kindergarten zone size for all affected schools;
- Addresses concerns of the local community;
- Accounts for residential construction and population growth within the affected areas;
- Avoids forcing students to cross geographic barriers (e.g. highways , district lines, etc.);
- Centrally locates the school within the zone;
- Minimizes the distance students must travel to attend their zoned school; and
- Maintains the diversity of schools.



Schools Affected by Rezoning

In the year prior to implementation:

DBN	School Name	Grade Span	Total Enrollment ¹	Total Building Capacity ²	Utilization %
20K112	P.S. 112 Lefferts Park	K-5	539	340	159%
20K176	P.S. 176 Ovington	K-5	1,409	808	174%



(1) Based on 2014 Budget Projections

(2) Based on 2013-2014 Blue Book Capacity

Impact of Rezoning – Kindergarten Zone Size

School Name	Current K Zone Size ¹	Planned K Zone Size	Change in K Zone Size
P.S. 112 Lefferts Park	100	125-135	↑
P.S. 176 Ovington	226	190-200	↓

Impact of Rezoning – Total Enrollment & Utilization

Planned					
School Name	Grade Span	Total Enrollment ¹	Total Building Capacity ^{2,3}	Utilization Rate	Change
P.S. 112 Lefferts Park	K-5	720-780	596	121-131%	↓
P.S. 176 Ovington	K-5	1170-1230	808	145-152%	↓

(1) See appendix for assumed number of sections and average class sizes used to derive total enrollment.

(2) Based on 2013-2014 Blue Book Capacity for P.S. 176

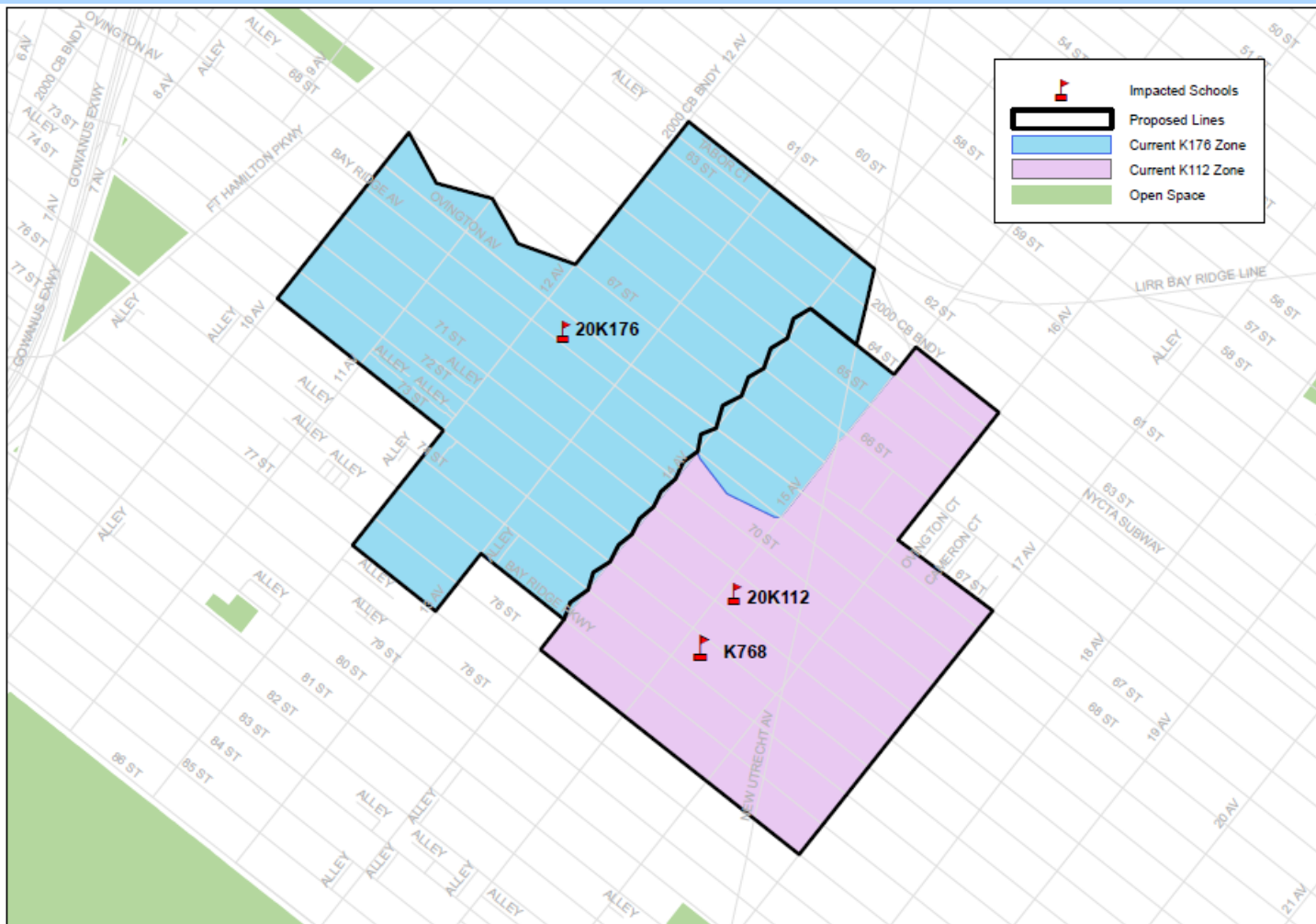
(3) Based on 2013-2014 Blue Book Capacity (building K112) and 2010-2014 Capital Plan capacity (building K768) for P.S. 112



**Department of
Education**

Carmen Fariña, Chancellor

Proposed Zone Lines



- (1) All zone lines run down the center of the street unless otherwise specified. The zigzag line indicates both sides of 14th Avenue are zoned to P.S. 112.

Next Steps and Contact Information

- Community sends feedback to Superintendent, CEC, and ODP.
- If there are changes to the scenario, the Superintendent and ODP would re-present the map.
- The CEC is expected to vote on October 8, 2014.

Community
Superintendent

Phone: (718) 759 – 4912
Email: kcstan@schools.nyc.gov
Subject: Brooklyn Zoning

CEC
Community
Education Council

Email: CEC20@schools.nyc.gov
Subject: Brooklyn Zoning

ODP
Office of District
Planning

Email: brooklynzoning@schools.nyc.gov
Subject: Brooklyn Zoning

Appendix A – Admissions Process¹

Students will be enrolled in New York City elementary schools by the following priority:

- 1 - Zoned students whose verified siblings are pre-registered or enrolled at the time of application submission and will be enrolled in grades K-5 in the school at the start of the following school year
- 2 - Zoned students other than those in (1) above applying to the zoned school
- 3 - Students whose verified siblings are pre-registered or enrolled at the time of application submission and will be enrolled in grades K-5 in the school at the start of the following school year who are not zoned to the school,
 - a. Within District first, then
 - b. Out of District
- 4 - Students currently attending the school's pre-kindergarten program who reside outside the school's zone, *without* a sibling who will be in grades K-5 at the school in the following school year,
 - a. Within District first, then
 - b. Out of District
- 5 - Students other than those in (3a) and (4a) above who are residents of that district
- 6 - Students other than those in (3b) and (4b) who are residents of another district

(1) Please refer to Chancellor's Regulation A-101 for further information.

Appendix B – Planned Section Counts

GE/ICT

School Name	Pre-Kindergarten	Kindergarten	Grades 1-5	Self-Contained
P.S. 112 Lefferts Park	0	5	4-5 ¹	0
P.S. 176 Ovington	0	7	7	4

(1) Principal has discretion to collapse at one or more grades.



Appendix C – Planned Average Class Sizes

GE/ICT

School Name	Pre-Kindergarten	Kindergarten	Grades 1-5	Self-Contained
P.S. 112	-	25	25-30	-
P.S. 176	-	25	25-30	12



Appendix D – Zone Retention and Enrollment Rates

			Zone Retention Rate for Kindergarten		Zone Enrollment Rate for Kindergarten	
School Name	Capped	K-Waitlist	Current ¹	Planned ²	Current	Planned
P.S. 112	No	No	82%	90%	92%	95%
P.S. 176	Yes	Yes	82%	90%	95%	95%



- (1) The current rates (both zone retention and zone enrollment) are based on the 2013 Audited Register as of October 31, 2013.
- (2) Planned retention rates are based on various factors, including but not limited to the historical number of zoned Kindergarten students that were waitlisted or overflowed due to capping.

Appendix E – Demographic Changes

School Name	Zone Percent Minority ¹	
	Current	Planned
P.S. 112	80%	75% - 85%
P.S. 176	79%	75% - 85%

- (1) Zone Percent Minority figures are based on the ethnicity of zoned kindergarten students from the 2013 Audited Register as of October 31, 2013. Students identified as “White – not of Hispanic origin” are not counted as minority.