



Office of District Planning

Proposal to CEC 22 for the Rezoning of P.S. 134, P.S. 139, P.S. 217, P.S. 245, P.S. 152, P.S. 315 and New School in Building K338

September 26, 2016

Overview of Building K338

Opening in the 2017-2018 school year, the new building (K338) located at 510 Coney Island will house an elementary school (22K889) and a middle school (22K890).

- Pending this approved rezoning by the CEC, the new elementary school will admit students via a zoned admissions policy beginning in 2017-2018 when it will open with pre-k and kindergarten. The school will phase in one grade each year until it serves students in PK-5 in the 2022-2023 school year.
- The new middle school will have a district wide choice admissions policy when it opens with 6th grade in 2017-2018 and will add a grade each year until it serves grades 6-8 in the 2019-2020 school year.

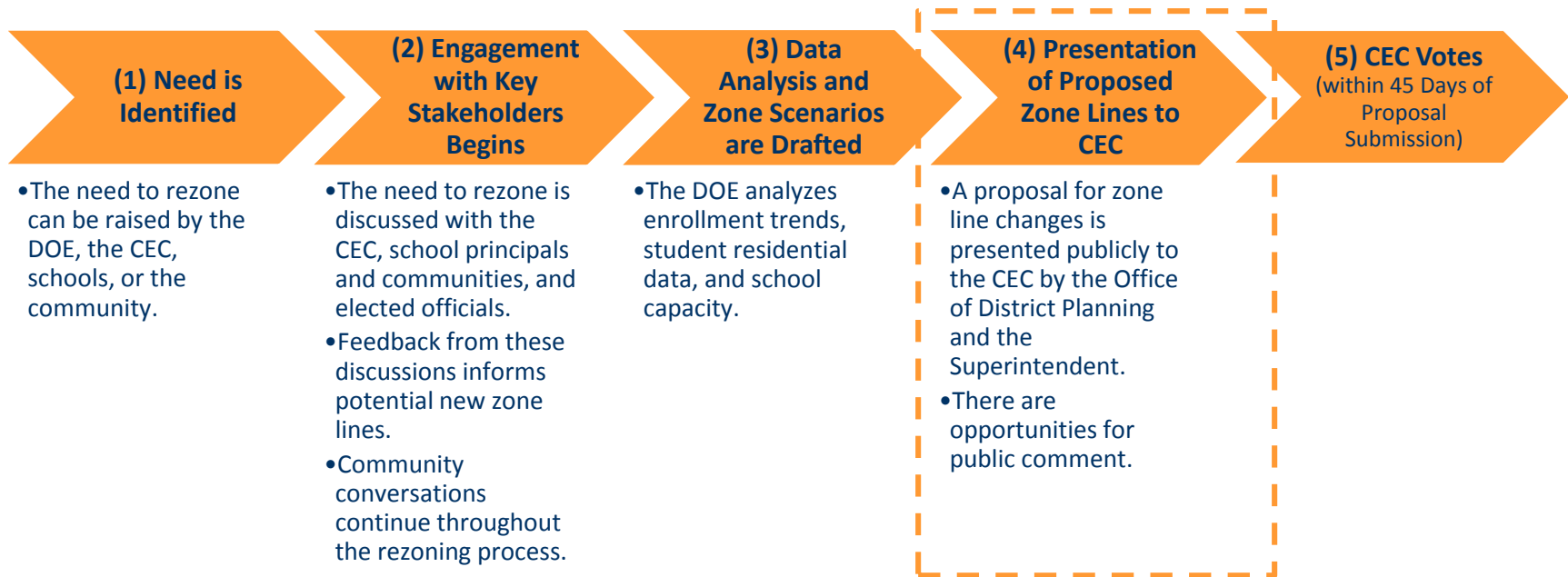


Rationale for Rezoning

- Create a zone for a new elementary school
- Alleviate overcrowding at elementary schools in the Ditmas Park neighborhood
- Reduce zoned kindergarten waitlists
- Reduce the need for surrounding elementary schools to cap and overflow students



Overview of Rezoning Process & Timeline



Timeline for 2017 Implementation



Guiding Policies and Principles

- Pending approval by the CEC, the proposed changes would take effect for the 2017-2018 academic year.
- Pending approval by the CEC, the proposed changes would only impact incoming pre-kindergarten and kindergarten students, or new students to the system. All currently enrolled students may remain in their school until graduation.
- Sibling grandfathering for pre-kindergarten and kindergarten students will be applicable.
- Admissions processes as outlined in Chancellor's regulation A-101.
- The Office of Pupil Transportation (OPT) will follow standard procedure to determine bus service eligibility of general education students, as outlined by Chancellor's regulation A-801.



Methodology – Determining the Target K Zone Size

Seat Supply: What is the capacity of each school?

Specifically, how many instructional sections (i.e. classes) and how many students can each building accommodate?

Seat Demand: How many students do we anticipate?

We assess demand – both from inside and outside the zone – based on:

- The historical number of kindergarten students living in the zone;
- Historical kindergarten waitlists and capping activity;
- Historical average class sizes;
- Historical zone retention rates & historical zone enrollment rates; and
- Anticipated kindergarten growth, based on current/future housing developments.



Methodology – Determining the Zone Lines

To the extent possible, we draw zone lines in a way that:

- Contains appropriate number of residents for a school's size, based on recent public school enrollment trends
- Factors we take into consideration:
 - New residential construction
 - Diversity
 - Geographic barriers
 - Travel distance



Schools Affected by Rezoning

In the current school year (2016-2017):

School Name	Grade Span ¹	Total Enrollment ²	Total Capacity ³	Building Utilization %
P.S. 139	K-5	971	846	115%
P.S. 245	K-5	324	249	130%
P.S. 217	K-5	1,182	1,014	117%
P.S. 134	K-5	540	466	116%
P.S. 315 ⁴	K-5	677	1,417	102%
P.S. 152 ⁴	K-5	770		

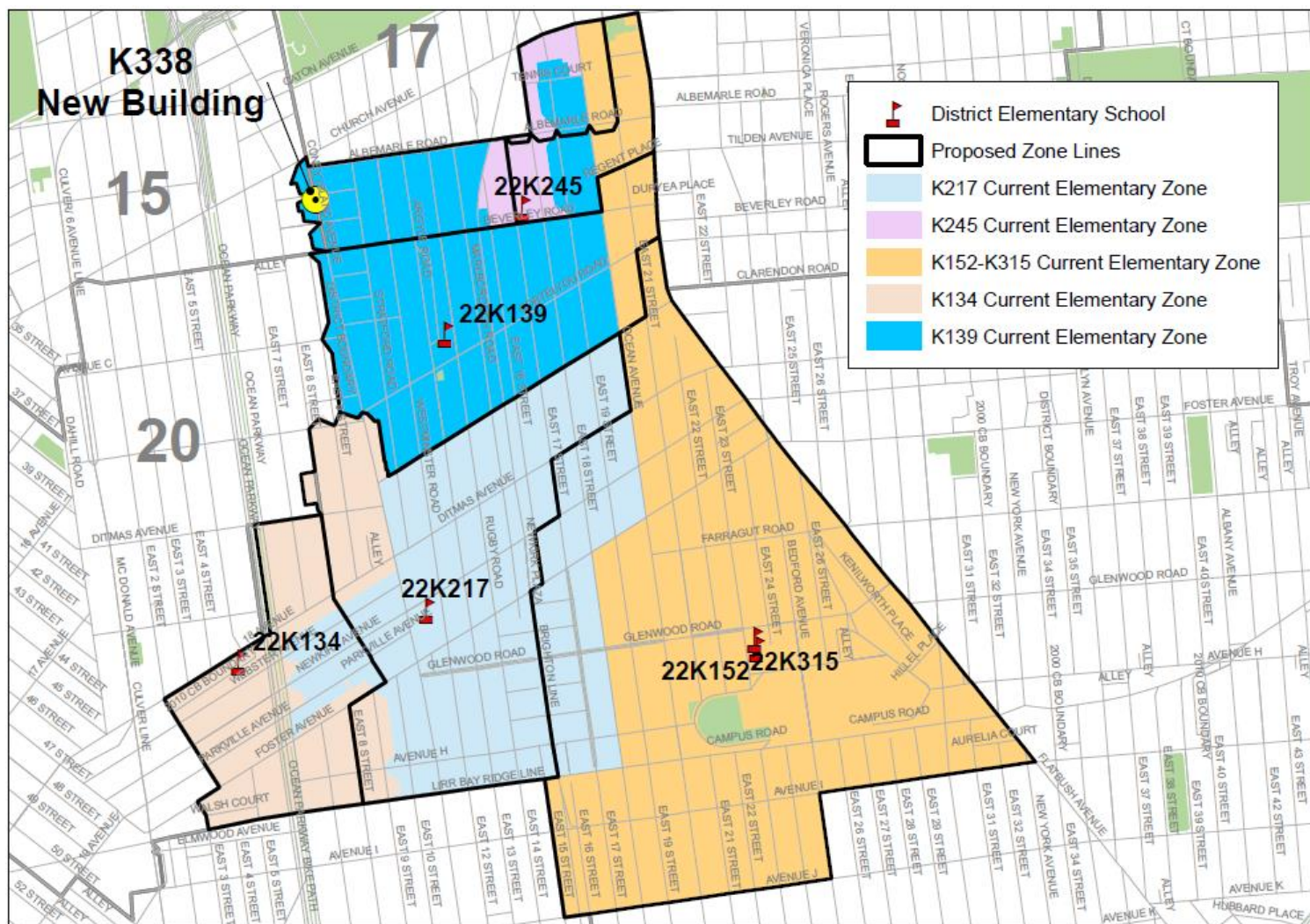
(1) All schools except P.S. 134 have a PK program. Total enrollment and utilization includes PK enrollment.

(2) Based on Budget Register projections for 2016-17.

(3) Based on 2014-2015 Blue Book Capacity. Capacity includes all buildings in in which an organization is sited.

(4) P.S. 152 and P.S. 315 share an elementary school zone and are co-located in K152.

Proposed Zone Lines for 2017-2018 Implementation



Impact of Rezoning: Projected Zone Size At Scale

School Name	Current Zone Size ¹	Projected K Zone Size ²	Change in Zone Size
P.S. 139	171	155-165	↓
P.S. 245	65	60-70	-
P.S. 217	231	195-205	↓
P.S. 134	104	90-100	↓
P.S. 315/P.S. 152	332	290-300	↓
New Elementary School- 22K889	-	85-95	-

¹The current zone size is based on the 2015 Audited Register as of October 31, 2015.

Impact of Rezoning: Projected Enrollment At Scale

School Name	Grade Span at Scale ¹	Current Enrollment ²	Projected At Scale Enrollment ³
P.S. 139	K-5	971	920 – 950
P.S. 245	K-5	324	300 – 330
P.S. 217	K-5	1,182	1,075 – 1,105
P.S. 134	K-5	540	520 – 550
P.S. 315	K-5	677	670 – 700
P.S. 152	K-5	770	730 – 760
New Elementary School- 22K889	K-5	-	520- 550



(1) All elementary schools listed have a Pre-K program except for P.S. 134

(2) Based on 2016-2017 Budget register projections

(3) See Appendix for planned number of sections and average class sizes used to derive total enrollment.

Enrollment & Utilization Impact

School Name	Projected at Scale				Change in Utilization
	Grade Span at Scale ¹	Total Enrollment ²	Total Building Capacity ³	Projected Utilization ⁴	
P.S. 139	K-5	920 – 950	846	109% - 112%	↓
P.S. 245	K-5	300 – 330	249	120% - 133%	No Change
P.S. 217	K-5	1,075 – 1,105	1,014	106% - 109%	↓
P.S. 134	K-5	520 – 550	466	112% - 118%	No Change
P.S. 315	K-5	670 – 700	1,417	99% - 103%	No Change
P.S. 152	K-5	730 – 760			
New Elementary School- 22K889	K-5	520- 550	757	104% - 111%	-

(1) All schools except P.S. 134 have a PK program. Total enrollment and utilization includes PK enrollment.

(2) See Appendix D and E for assumed number of sections and average class sizes used to derive total enrollment. Total enrollment for 22K889 includes planned pre-kindergarten sections.

(3) Based on target capacity from the 2014-2015 Blue Book.

(4) All utilization rates refer to building utilization. 22K889 is co-located with middle school 22K890



**Department of
Education**

Carmen Fariña, Chancellor

Contact Information and Next Steps

- CEC 22 is expected to vote on this proposal, at a date to be determined. Based on community feedback, CEC 22 has extended the time frame to allow the community the opportunity to provide additional feedback.
- In addition to attending meetings, feedback can be provided in the following ways:

Community
Superintendent

Phone: (718) 968-6428
Email: JBove@schools.nyc.gov
Subject: D22 Zoning

CEC
Community
Education Council

Email: cec22@schools.nyc.gov
Subject D22 Zoning

ODP
Office of District
Planning

Email: BrooklynZoning@schools.nyc.gov
Subject: D22 Zoning

QUESTIONS?

Appendix



Appendix A.1: Admissions Process¹ - Pre-Kindergarten

1. Students residing in the zone, who have a sibling pre-registered or enrolled at the time of application submission and will be enrolled in grades K-5 in the school at the start of the following school year.¹
2. Students residing in the zone, who do not have a sibling at the school.¹
3. Students residing in the district, who have a sibling at the school,
 - a. who have no zoned school or whose zoned school has no pre-K program, then
 - b. who are zoned to a different school which has a pre-K program.
4. Students residing in the borough, who have a sibling at the school.
5. Students residing out-of-borough, who have a sibling at the school.
6. Students residing in the district,
 - a. who have no zoned school or whose zoned school has no pre-K program, then
 - b. who are zoned to a different school which has a pre-K program.
7. Students residing in the borough.
8. Students residing out-of-borough.



Appendix A.2: Admissions Process¹ - Kindergarten

Students will be enrolled in New York City elementary schools by the following priority:

1. Zoned students whose verified siblings are pre-registered or enrolled at the time of application submission and will be enrolled in grades K-5 in the school at the start of the following school year
2. Zoned students other than those in (1) above applying to the zoned school
3. Students whose verified siblings are pre-registered or enrolled at the time of application submission and will be enrolled in grades K-5 in the school at the start of the following school year who are not zoned to the school,
 - a. Within District first, then
 - b. Out of District
4. Students currently attending the school's pre-kindergarten program who reside outside the school's zone, *without* a sibling who will be in grades K-5 at the school in the following school year,
 - a. Within District first, then
 - b. Out of District
5. Students other than those in (3a) and (4a) above who are residents of that district
6. Students other than those in (3b) and (4b) who are residents of another district

Appendix B.1: 2015-2016 Section Counts

GE/ICT*

School Name	PK	Kindergarten	Grades 1-5	Self-Contained
P.S. 139	3	6	5-6	4
P.S. 245	1	2	2	1
P.S. 217	3	8	6-7	3
P.S. 134	-	5	3-4	1
P.S. 315	1	4	4-5	4
P.S. 152	1	5	5	6
New Elementary School- 22K889	-	-	-	-



Appendix B.2: Projected Section Counts

GE/ICT

School Name	PK	Kindergarten	Grades 1-5	Self-Contained
P.S. 139	3	6	5	4
P.S. 245	1	2	2	1
P.S. 217	3	7	6	3
P.S. 134	0	4	3	1
P.S. 315	1	4	4	4
P.S. 152	1	5	4	6
New Elementary School- 22K889	2	3	3	2



Appendix C.1: 2015-2016 Average Class Sizes

GE/ICT*

School Name	Kindergarten	Grades 1-2	Grades 3-5	Self-Contained
P.S. 139	24	25-27	27-30	10-12
P.S. 245	25	24-28	22-25	3-5
P.S. 217	24	28-31	28-31	10-12
P.S. 134	20	26-29	23-27	10-12
P.S. 315	24	26-30	27-31	10-12
P.S. 152	21	25-29	27-29	10-12
New Elementary School- 22K889	-	-	-	-



Appendix C.2: Projected Average Class Sizes

GE/ICT

School Name	Kindergarten	Grades 1-2	Grades 3-5	Self-Contained
P.S. 139	22-24	27-29	27-29	10-12
P.S. 245	23-25	23-25	24-26	10-12
P.S. 217	23-25	27-29	27-29	10-12
P.S. 134	21-23	28-30	28-30	10-12
P.S. 315	24-25	25-27	25-27	10-12
P.S. 152	21-23	27-29	27-29	10-12
New Elementary School- 22K889	24-25	25-27	25-27	10-12

Appendix D: Zone Demand

	Historic Kindergarten Capping and Waitlist		Zoned Retention Rate (% of the zone that enrolls in its zoned school)		Zoned Enrollment Rate (% of total kindergarten enrollment that comes from its zone)	
School Name	Capped K	K- Waitlist	Current ¹	Projected	Current ¹	Projected
P.S. 139			70%	65%-75%	79%	75%-85%
P.S. 245			66%	60%-65%	84%	80%-90%
P.S. 217			76%	75%-85%	91%	85%-95%
P.S. 134			67%	65%-75%	78%	75%-85%
P.S. 315		Y	30%	30%-40%	89%	85%-95%
P.S. 152	Y		27%	30%-40%	91%	85%-95%
New Elementary School- 22K889	-	-	-	70%-80%	-	70%-80%

¹The current rates (both zone retention and zone enrollment) are based on the 2015 Audited Register as of October 31, 2015.

Appendix E: Zone Demographic Changes – Free/Reduced Lunch

School Name	Zone Percent Free & Reduced Lunch ¹	
	2015-2016 School Year	Projected
P.S. 139	77%	75%-85%
P.S. 245	91%	75%-85%
P.S. 217	57%	55%-65%
P.S. 134	61%	55%-65%
P.S. 152/P.S. 315	76%	65%-75%
New Elementary School- 22K889	-	80%-90%

Appendix F.1: Zone Demographic Changes - Ethnicity

School Name	Zone Percent Minority ¹	
	2015-2016 School Year	Projected
P.S. 139	85%	80%-90%
P.S. 245	97%	90%-100%
P.S. 217	79%	75%-85%
P.S. 134	65%	65%-75%
P.S. 152/P.S. 315	92%	85%-95%
New Elementary School- 22K889	-	90%-100%

Appendix F.2: Zone Demographic Changes - Ethnicity

Current ¹					
School Name	Black	Hispanic	Asian	White	Other
P.S. 139	34%	33%	14%	15%	4%
P.S. 245	46%	40%	8%	3%	3%
P.S. 217	10%	13%	54%	21%	3%
P.S. 134	3%	9%	49%	35%	5%
P.S. 152/P.S. 315	57%	26%	7%	8%	2%
New Elementary School- 22K889	-	-	-	-	-

¹Current figures are based on the ethnicity of zoned kindergarten students from the 2015-2016 Audited Register. Figures do not necessarily represent the demographics of the school.

Appendix F.3: Zone Demographic Changes - Ethnicity

Proposed¹

School Name	Black	Hispanic	Asian	White	Other
P.S. 139	20%-30%	35%-45%	10%-20%	10%-20%	0%-5%
P.S. 245	50%-60%	30%-40%	0%-5%	5%-10%	0%-5%
P.S. 217	5%-10%	5%-15%	55%-65%	15%-25%	0%-5%
P.S. 134	0%-5%	5%-15%	45%-55%	25%-35%	5%-10%
P.S. 152/P.S. 315	50%-60%	15%-25%	5%-15%	5%-15%	0%-5%
New Elementary School- 22K889	55%-65%	25%-35%	5%-10%	5%-10%	0%-5%

¹Proposed figures are based on the ethnicity of zoned kindergarten students from the 2015-2016 Audited Register. Figures do not necessarily represent the proposed demographics of the school.

Appendix G: Rezoning Engagement

Engagement with impacted community members were held on:

- **January 4th** - Superintendent Bove began to engage neighboring elementary school principals.
- **January 6th** - The Office of District Planning attended the January CEC 22 Meeting to introduce the new building, located at 510 Coney Island Avenue and receive initial community feedback.
- **March 10th** - The Office of District Planning attended the March CEC 22 Meeting to discuss the increasing elementary school growth around the new building.
- **March 17th** - Superintendent Bove held a Principals Meeting with impacted elementary schools to begin initial conversations regarding new ES zone lines.
- **April 21st** - The Office of District Planning attended the April CEC 22 Meeting to discuss potential ES zone lines.
- **June 2nd** - The Office of District Planning attended the June CEC 22 Meeting to present potential ES zone lines to the District 22 community.
- **June 15th** - Superintendent Bove held a Principals Meeting to continue receiving feedback on the ES zone lines.
- **September 26th** - The Office of District Planning attended a CEC Special Rezoning meeting to present the ES zone lines and receive feedback.
- **October 6th** - The Office of District Planning attended the October CEC meeting to receive feedback and answer additional questions.
- **October 17th** - The Office of District Planning will attend a CEC Special Rezoning meeting to receive feedback and answer additional questions.

