



Office of Portfolio Management

*Proposal for Unzoning
Elementary and Middle
Schools Presented to CEC 23*



**Department of
Education**

Dennis M. Walcott, Chancellor

October 25, 2012

Table of Contents

	Slide #
I. Rationale for Unzoning	3
II. Overview of the Unzoning Process	4
III. Guiding Policies and Principles	5
IV. Elementary School Unzoning	6
a) Elementary School Unzoning Overview	7
b) Admissions Priority	8
c) District 23 Elementary Schools	9-10
V. Middle School Unzoning	11
a) Middle School Unzoning Overview	12
b) The Admissions Process	13
c) District 23 Middle Schools	14-15
VI. Contact Information for Comments	16
VII. Attachments	
a) Map of District 23 Elementary Schools	
b) Map of District 23 Middle Schools	

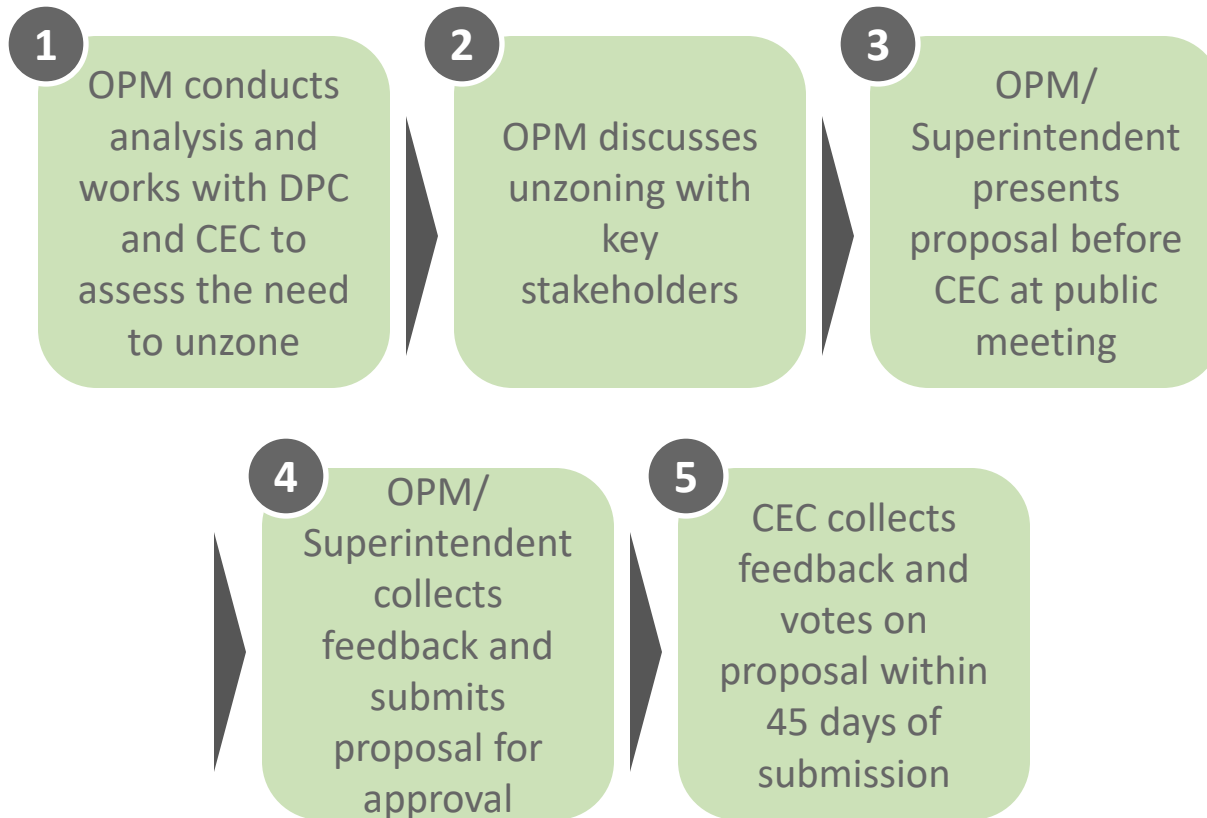


Rationale for Unzoning

- Unzoning elementary and middle schools in District 23 will:
 - Increase access to educational options across the district;
 - Provide families with additional information about school options; and
 - Align admissions processes with enrollment trends.
- Elementary Schools: District 23 is a geographically small district, where families have multiple elementary schools located within walking distance to their places of residence.
- Middle Schools: Pending a CEC resolution to request Middle School Choice admissions in District 23, unzoning would allow the DOE to fully implement the Middle School Choice admissions policies.



Overview of Unzoning Process



Guiding Policies and Principles

- Pending approval by the CEC, the proposed changes to the elementary school zones would take effect for the 2013-2014 academic year, and the proposed changes to the middle school zones would take effect for the 2014-2015 academic year.
- Pending approval by the CEC, the proposed changes would only impact incoming kindergarten students, sixth grade students, or students new to the school system.



Elementary School Unzoning

Elementary School Unzoning in District 23

- Currently, children in District 23 are zoned to either an elementary or K-8 school¹.
- Unzoning elementary schools allows the following for District 23 families:
 - Increased access to information about school options within the district
 - Ability to indicate a preference from among District 23 elementary schools
 - A process that reflects the preferences of individual families
- Students would retain a guarantee to a placement in a District 23 elementary school.



Department of
Education

Dennis M. Walcott, Chancellor

(1) District 23 also offers one unzoned elementary option, P.S./I.S. 323.

Admissions Priority

Students in District 23 will receive priority to attend an elementary school in the district in the following priority order:

- 1 – District 23 students with a verified sibling who will be enrolled in grades 1-5 in the school as of September 2013
- 2 – Non-District 23 students with a verified sibling who will be enrolled in grades 1-5 in the school as of September 2013
- 3 – District 23 students without siblings
- 4 – Non-District 23 students without siblings



District 23 Elementary Schools

DBN	School Name	2012-2013 Grade Span	At Scale Grade Span	2013-14 Projected Kindergarten Enrollment ¹	2013-14 Projected Total Enrollment ²	Total Capacity ³	2013-14 Projected Utilization
23K041	P.S. 041 Francis White	K-8	K-8	55 - 65	595 - 685	885	65% - 75%
23K073	P.S. 073 Thomas S. Boyland	K-8	K-8	45 - 55	415 - 505*	778	55% - 65%
23K137	P.S./I.S. 137 Rachel Jean Mitchell	K-8	K-8	40 - 50	346 - 436*	437	80% - 100%
23K150	P.S. 150 Christopher	K-5	K-5	30 - 40	195 - 255	365	55% - 70%
23K155	P.S./I.S. 155 Nicholas Herkimer	K-8	K-8	55 - 65	480 - 570*	830	60% - 70%
23K156	P.S. 156 Waverly	K-5	K-5	110 - 120	775 - 835*	802	95% - 105%
23K165	P.S. 165 Ida Posner	K-8	K-8	55 - 65	535 - 625*	566	95% - 110%
23K178	P.S. 178 Saint Clair Mckelway	K-8	K-8	60 - 70	495 - 585*	851	60% - 70%
23K184	P.S. 184 Newport	K-8	K-8	65 - 75	525 - 615*	756	70% - 80%
23K284	P.S. 284 Lew Wallace	K-8	K-8	45 - 55	465 - 555*	575	80% - 95%

(1) Kindergarten projections are best estimates and subject to change based on demand and other enrollment factors.

(2) Asterisks indicate that enrollment includes Pre-K.

(3) Based on 2011-2012 Blue Book.

District 23 Elementary Schools (continued)

DBN	School Name	2012-2013 Grade Span	At Scale Grade Span	2013-14 Projected Kindergarten Enrollment ²	2013-14 Projected Total Enrollment ³	Total Capacity ⁴	2013-14 Projected Utilization
23K298	P.S. 298 Dr. Betty Shabazz	K-5, 7-8	K-5	40 - 50	325 – 395*	821	40% - 50%
23K323 ¹	P.S./I.S. 323	K-8	K-8	70-80	450-540	839	55% - 65%
23K327	P.S. 327 Dr. Rose B. English	K-8	K-8	60 - 70	665 – 755*	754	90% - 100%
23K401	Riverdale Avenue Community School	K-2	K-5	40 - 50	280-320*	N/A ⁵	N/A
23K446	Christopher Avenue Community School	K-3	K-5	40 - 50	245 – 295*	N/A	N/A

(1) P.S./I.S. 323 is an unzoned elementary school option in District 23.

(2) Kindergarten projections are best estimates and subject to change based on demand and other enrollment factors.

(3) Asterisks indicate that enrollment includes Pre-K.

(4) Based on 2011-2012 Blue Book.

(5) Total capacity figures are not available for schools that are currently phasing in.

Middle School Unzoning

Middle School Unzoning in District 23

- Currently, middle school students in District 23 attend their zoned school, continuing K-8 school, or one of a limited number of choice options.
- There are currently two middle schools with stand alone middle school zones, P.S. 284 Lew Wallace and P.S./I.S. 323.
- The CEC would need to pass a resolution requesting the implementation of Middle School Choice as the admissions policy for District 23 middle school students.



The Admissions Process: Middle School Choice

- Every 5th grade student in the district completes an application indicating his or her preference for attending middle school.
- The application is pre-populated with the students' biographical information already printed on the form. Families need to simply rank each school for which they would like to be considered in order of preference, sign the form, and return it to their elementary school.
- Students are matched to a program based on (1) student preference, (2) any admission priorities for the school, and (3) selection criteria, if applicable.



District 23 Middle Schools

DBN	School Name	2012-2013 Grade Span	At Scale Grade Span	2013-14 Projected 6 th Grade Seats ¹	2013-14 Projected Total Enrollment ²	Total Capacity ³	2013-14 Projected Utilization
Middle School Zoned							
23K284	P.S. 284 Lew Wallace	K-8	K-8	60 - 70	465 – 555*	575	81% - 97%
23K323	P.S./I.S. 323	K-8	K-8	70 - 80	450 – 540*	839	54% - 64%
Zoned K-8 (Elementary School Zones)							
23K041	P.S. 041 Francis White	K-8	K-8	65 - 75	595 - 685	885	67% - 77%
23K073	P.S. 073 Thomas S. Boyland	K-8	K-8	40 - 50	415 – 505*	778	53% - 65%
23K137	P.S./I.S. 137 Rachel Jean Mitchell	K-8	K-8	20 - 30	250 – 340*	437	57% - 78%
23K155	P.S./ I.S. 155 Nicholas Herkimer	K-8	K-8	50 - 60	480 – 570*	830	58% - 69%
23K165	P.S. 165 Ida Posner	K-8	K-8	50 - 60	535 – 625*	566	95% - 110%
23K178	P.S. 178 Saint Clair Mckelway	K-8	K-8	55 - 65	495 – 585*	851	58% - 69%
23K184	P.S. 184 Newport	K-8	K-8	45 - 55	525 – 615*	756	69% - 81%
23K327	P.S. 327 Dr. Rose B. English	K-8	K-8	75 - 85	665 – 755*	754	88% - 100%

(1) 6th grade seat projections are best estimates and subject to change based on demand and other enrollment factors.

(2) Asterisks indicate that enrollment includes Pre-K.

(3) Based on 2011-2012 Blue Book.

District 23 Middle Schools (continued)

DBN	School Name	2012-2013 Grade Span	At Scale Grade Span	2013-14 Projected 6 th Grade Seats ¹	2013-14 Projected Total Enrollment	Total Capacity ²	2013-14 Projected Utilization
School-Based Application							
23K392	I.S. 392	5-8	5-8	100 - 110	280 - 320	320	88% - 100%
District Choice							
23K363	Brownsville Collaborative Middle School	6	6-8	85 - 95	170 - 190	N/A ³	N/A
23K634	General D. Chappie James Middle School of Science	6-8	6-8	70 - 80	200 - 230	298	67% - 77%
23K671	Mott Hall Bridges Middle School	6-8	6-8	75 - 85	180 - 210	129	140% - 163%
Boroughwide Choice							
23K518	Kappa V	6-8	6-8	75 - 85	225 - 255	465	48% - 55%
23K522	Mott Hall IV	6-8	6-8	65 - 75	215 - 245	468	46% - 52%
23K644	Eagle Academy for Young Men II	6-10	6-12	85 - 95	480 - 540	596	81% - 91%
23K697	Teachers Preparatory High School	6-12	6-12	35 - 45	505 - 575	641	79% - 90%



Department of
Education

Dennis M. Walcott, Chancellor

(1) 6th grade seat projections are best estimates and subject to change based on demand and other enrollment factors.

(2) Based on 2011-2012 Blue Book.

(3) Total capacity figures are not available for schools that are currently phasing in.

Contact Information for Comments

Community
Superintendent

Phone: (718) 240 – 3677
Email: acumber@schools.nyc.gov
Subject: District 23 Unzoning

CEC
Community
Education Council

Email: CEC23@schools.nyc.gov
Subject: District 23 Unzoning

OPM
Office of Portfolio
Management

Email: brooklynzoning@schools.nyc.gov
Subject: District 23 Unzoning



Department of
Education

Dennis M. Walcott, Chancellor