



## Office of Portfolio Management

*Proposal for Rezoning  
presented to CEC 24 by the  
Community School District  
Superintendent*



**Department of  
Education**

*Dennis M. Walcott, Chancellor*

**May 22, 2012**

# Table of Contents

	Slide #
I. Rationale for Rezoning . . . . .	3
II. Overview of the Rezoning Process . . . . .	4
III. Guiding Policies and Principles . . . . .	5
IV. Methodology . . . . .	6-7
a. Determining the Target K Zone Size	
b. Determining the Zone Lines	
V. Schools Affected by Rezoning . . . . .	8
VI. Proposed Zone Lines . . . . .	9
VII. Impact of Rezoning . . . . .	10-12
VIII. Contact Information for Comments . . . . .	13
IX. Appendix . . . . .	14-18
a. Admissions Process	
b. Planned Section Counts	
c. Planned Average Class Sizes	
d. Zoned Percentage Rates	
e. Overview of Projections Methodology	

# Rationale for Rezoning

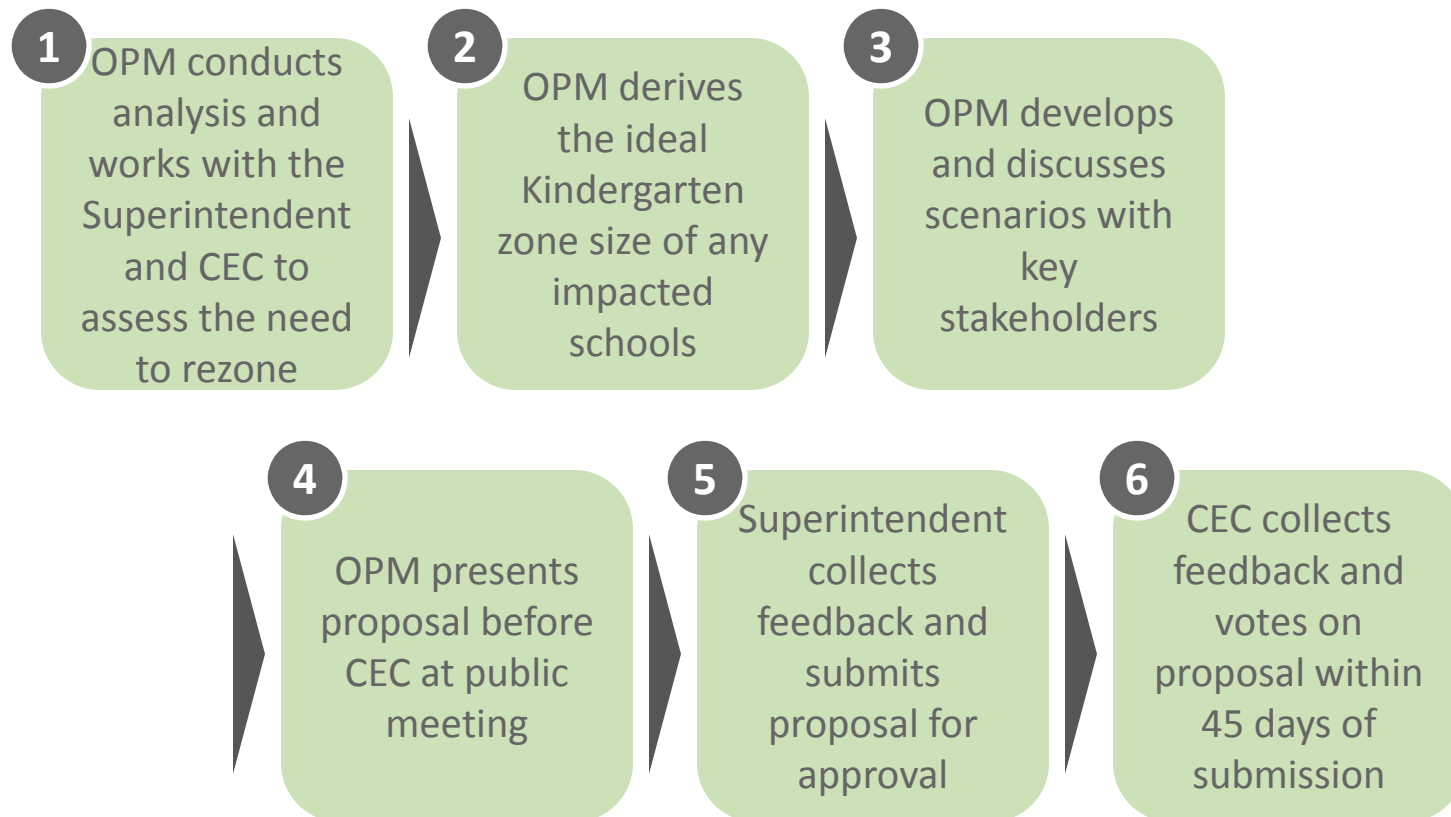
---

- To create a new zone for P.S. 330 once the school moves to building Q287 in September 2013.
- To reduce the size of P.S. 143's current zone, enabling the school to serve more of its zoned population and decrease the need to overflow.

# Guiding Policies and Principles

- Pending approval by the CEC, the proposed changes would take effect for the 2013-14 academic year.
- Pending approval by the CEC, the proposed changes would only impact incoming Kindergarten or new students to the system. All currently enrolled student may remain in their school until graduation.
- Sibling enrollment policies would remain in effect for the 2013-2014 school year. Children currently living in the affected zones who would be zoned to another school as a result of this proposal would retain their enrollment status as an in-zone sibling during the year of implementation.
- See Appendix A for the admissions process as outlined in the Chancellor's regulation A-101.

# Overview of Rezoning Process



# Methodology – Determining the Target K Zone Size

## **Seat Supply: What is the capacity of each school?**

- The number of possible sections in each building, based on the number of full-size instructional classrooms

## **Seat Demand: How many students do we anticipate, both from within and outside of the zone?**

- Historical number of Kindergarten students living in the zone
- Historical Kindergarten waitlists and capping activity
- Historical average class sizes
- Historical zone retention rate –How many students who live in the zone and attend their zoned school?
- Historical zoned enrollment rate – How many students who live outside the zone attend a given school?

# Methodology – Determining the Zone Lines

**To the extent possible, the proposed zone lines were drawn in a way that:**

- Achieves the targeted Kindergarten zone size for all affected schools
- Avoids forcing students to cross geographic barriers (e.g. highways , district lines, etc.)
- Centrally locates the school within the zone
- Addresses concerns of the local community

# Schools Affected by Rezoning

DBN	School Name		Grade Span	Grade Span at Scale	Total Enrollment <sup>1</sup>	Total Capacity	Utilization %
24Q330	P.S. 330		K-1	K-5	220	N/A <sup>2</sup>	
24Q143	P.S. 143 Louis Armstrong	w/ Transfiguration Annex	K-5	K-5	1,666 <sup>3</sup>	1,360 <sup>4</sup>	123%
		w/o Transfiguration Annex			1,541 <sup>5</sup>	1,108 <sup>6</sup>	139%
28Q139	P.S. 139 Rego Park		K-5	K-5	877	734 <sup>7</sup>	119%

(1) Based on the 2011-12 Audited Register.

(2) P.S. 330's current org capacity in building Q269 is 345. Beginning in the 2013-14 school year, P.S. 330 will be re-sited to building Q287.

(3) Represents the total enrollment including the 125 students currently in the temporary Transfiguration Annex.

(4) Based on the combined capacity of main building Q143 and the temporary Transfiguration Annex.

(5) Represents adjusted enrollment netting out the 125 students currently in the temporary Transfiguration Annex.

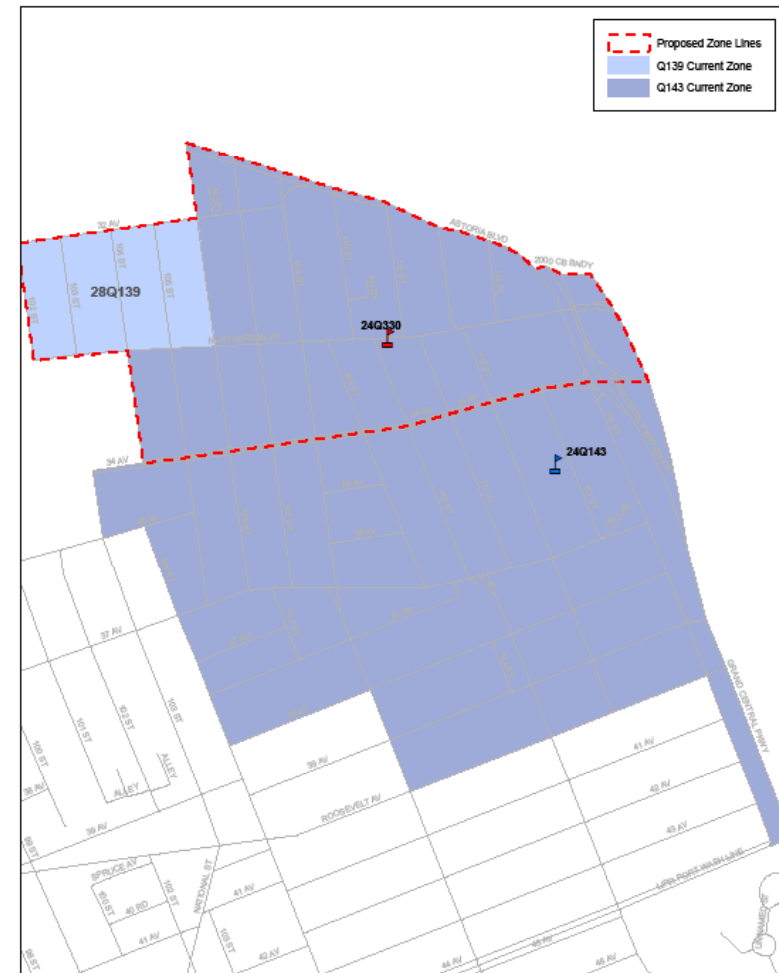
(6) Based on the capacity of main building Q143 only, excluding the temporary Transfiguration Annex.

(7) Based on the 2010-11 Blue Book.



# Proposed Zone Lines

Please refer to the handout  
District 24 Elementary School  
Proposal for CEC



# Impact of Rezoning

DBN	Current K Zone Size <sup>1</sup>	Planned K Zone Size	Change in K Zone Size
24Q330	New Zone	105 - 110	New Zone
24Q143	347	270 - 275	↓

## Impact of Rezoning (cont'd)

DBN	Current <sup>1</sup>		Planned		Change in K Enrollment
	# of K Sections	K Enrollment	# of K Sections	K Enrollment	
24Q330	2	44	4	95 -100	↑
24Q143	13	322	11	270 -275	↓

# Impact of Rezoning (cont'd)

## Unique Factors and Considerations:

- Average Utilization Rates for K-5 schools in the Corona/Elmhurst area is 129%
- Capacity is based on an SCA-derived formula
- Planned enrollment assumes that all full-size rooms are maximized for instructional use
- Rezoning will decrease Q143's zone size; however, fewer students will be overflowed, thereby maintaining enrollment

DBN		Current <sup>1</sup>		Planned	
		Total Enrollment	Utilization Rate	Total Enrollment	Utilization Rate
24Q330		220	N/A	555-605	132-144% <sup>2</sup>
24Q143	w/ transfiguration annex	1,666 <sup>3</sup>	123% <sup>4</sup>	1,625-1,655	147-149% <sup>8</sup>
	w/o transfiguration annex	1,541 <sup>5</sup>	139% <sup>6</sup>		

(1) Based on the 2011-12 Audited Register.

(2) Based on P.S. 330's org capacity beginning in the 2013-14 school year when it would be re-sited to building Q287.

(3) Represents the total enrollment including the 125 students currently in the temporary Transfiguration Annex.

(4) Based on the combined capacity of main building Q143 and the temporary Transfiguration Annex.

(5) Represents adjusted enrollment netting out the 125 students currently in the temporary Transfiguration Annex.

(6) Based on the capacity of main building Q143 only, excluding the temporary Transfiguration Annex.

(7) Based on the capacity of main building Q143 only, excluding temporary Transfiguration Annex. However, utilization at P.S. 143 is subject to change based on the lease agreement.

## Contact Information for Comments

Community  
Superintendent

Phone: (718) 592 – 3357  
Email: [MChan2@schools.nyc.gov](mailto:MChan2@schools.nyc.gov)  
Subject: District 24 Zoning

CEC  
Community  
Education Council

Email: [CEC24@schools.nyc.gov](mailto:CEC24@schools.nyc.gov)  
Subject: District 24 Zoning

OPM  
Office of Portfolio  
Management

Email: [QueensZoning@schools.nyc.gov](mailto:QueensZoning@schools.nyc.gov)  
Subject: District 24 Zoning

# Appendix A – Admissions Process

Students are (and would continue to be) enrolled in New York City elementary schools by the following priority:

- 1 - Zoned students with verified siblings who will be enrolled in grades 1-5 in the school as of September 2013
- 2 - Zoned students without siblings applying to the zoned school
- 3 - Non-zoned students with verified siblings, who will be enrolled in grades 1-5 in the school as of September 2013,
  - a. Within District first, then
  - b. Out of District
- 4 - Non-zoned students without siblings:
  - a. Within District first, then
  - b. Out of District

## Appendix B – Planned Section Counts

GE/ICT

DBN	Kindergarten	Grades 1-5	Self-Contained
24Q330	4	3	Up to 2
24Q143	11	8 to 9	5

## Appendix C – Planned Average Class Sizes

GE/ICT			
DBN	Kindergarten	Grades 1-5	Self-Contained
24Q330	25	32	12
24Q143	25	31	12



## Appendix D – Zone Retention and Enrollment Rates

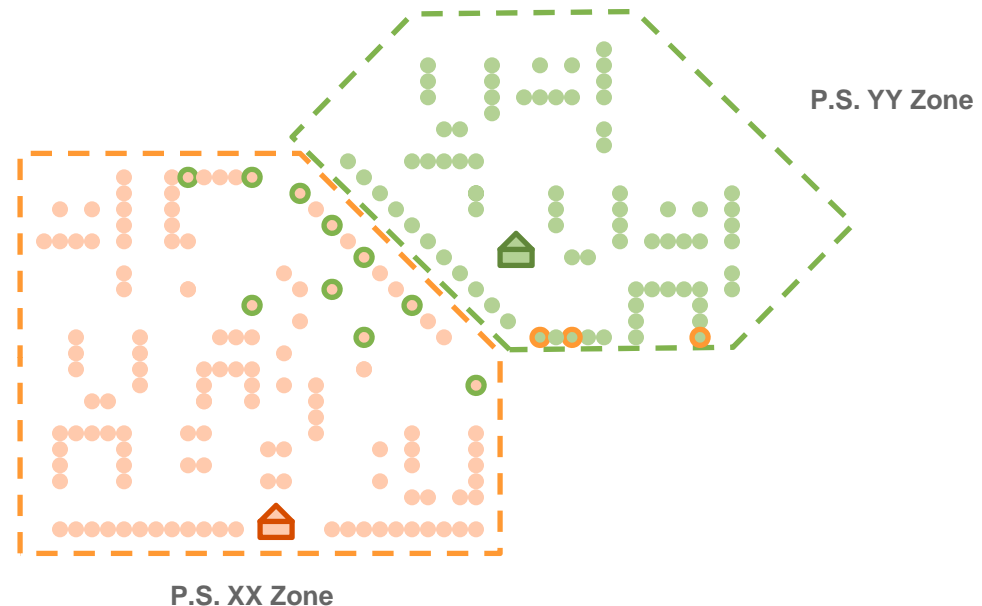
DBN	Capped K	K-Waitlist	Current Zone Retention Rate	Planned Zone Retention Rate	Current Zoned Enrollment Rate	Planned Zoned Enrollment Rate
24Q330	No	No	-	90%	-	90%
24Q143	2010-11	2010-11	86%	90%	92%	90%

- (1) The current rates are based on the 2011-12 Audited Register.
- (2) Planned rates are based on various factors, including but not limited to the historical number of zoned Kindergarten students that were waitlisted or overflowed due to capping as well as an assumed reduction in the number of out-of-zoned enrollment.

# Appendix E – Projections Methodology

- Zoned to PS XX and attends.
- Zoned to PS XX but does not attend.
- Not zoned to PS XX but attends.

Metric	Definition	Value
Zone Size:	# of students that live in PS XX zone	<span style="color: orange;">●</span> +
Zone Retention Rate:	% of zoned students that attend PS XX	$\frac{\text{orange dots}}{(\text{orange dots} + \text{green dots})}$
Zoned Enrollment Rate:	% of total enrollment that resides in zone	$\frac{\text{orange dots}}{(\text{orange dots} + \text{orange dots with green border})}$



**Example, Part I:** There are currently 100 kindergarten students living in the P.S. XX zone. Due to the lack of a Gifted & Talented program, about 10 students on average have chosen to attend P.S. YY instead. What is the Zoned Retention Rate for P.S. XX?

$$\text{Zoned Retention Rate} = \text{Zoned Students that Attend} \div \text{Zone Size} = (100-10) \div 100 = 90\%$$

Zone Size: 100  
 Zoned Enrollment Rate: 90%  
 Total Zoned Enrollment: 90