



Office of Portfolio Management

Proposal for elementary school rezoning presented to CEC 24 by the Community School District Superintendent



**Department of
Education**

Dennis M. Walcott, Chancellor

October 10, 2013

Table of Contents

	Slide #
I. Rationale for Rezoning	3
II. Overview of the Rezoning Process	4
III. Guiding Policies and Principles	5
IV. Methodology	6-7
a. Determining the Target K Zone Size	
b. Determining the Zone Lines	
V. Schools Affected by Rezoning	8
VI. Impact of Rezoning	9-10
VII. Proposed Zone Lines	11-17
VIII. Contact Information for Comments	18
IX. Appendix	19
a. Admissions Process	
b. Planned Section Counts	
c. Planned Average Class Sizes	
d. Zoned Percentage Rates	
e. Demographic Changes	
f. Overview of Projections Methodology	

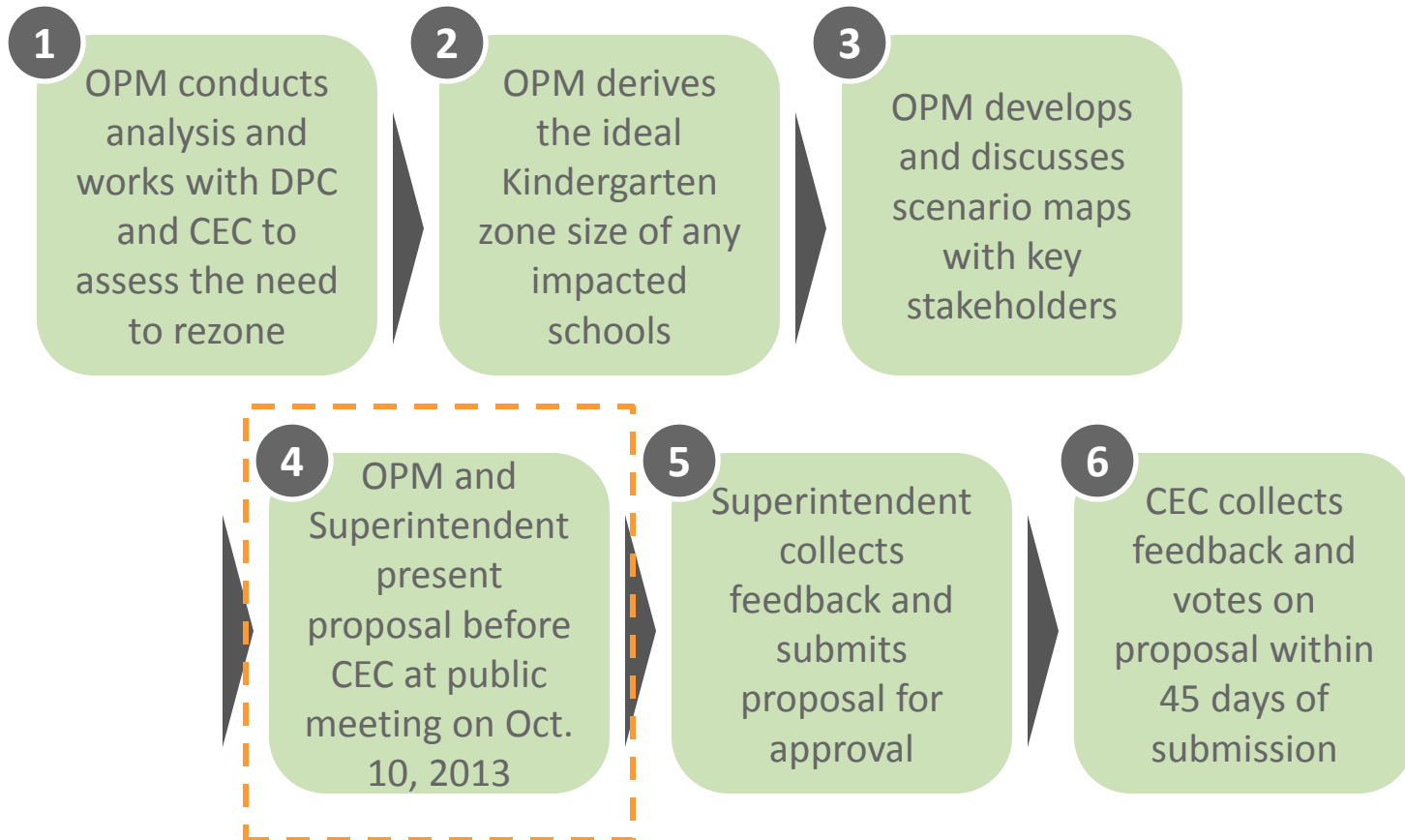


Rationale for Rezoning

- To create zones for and to account for the new capacity of buildings Q313 and Q290, slated to open in 2014, and Q320, slated to open in 2015.
- To alleviate overcrowding in District 24.



Overview of Rezoning Process



Guiding Policies and Principles

- Pending approval by the CEC, the proposed changes would take effect for the 2014-2015 academic year.
- Pending approval by the CEC, the proposed changes would only impact incoming Kindergarten or new students to the system. All currently enrolled students may remain in their school until graduation.
- Children whose verified siblings are enrolled in a school impacted by a re-zoning plan adopted by the CEC will maintain zoned sibling priority to that impacted school¹.
- See Appendix A for the admissions process as outlined in the Chancellor's regulation A-101.
- The Office of Pupil Transportation (OPT) will follow standard procedure to determine bus service eligibility of general education students, as outlined by Chancellor's regulation A-801.



(1) Pending approval of the amendment to Chancellor's regulation A-101 on October 30th.

Methodology – Determining the Target K Zone Size

Seat Supply: What is the capacity of each school?

Specifically, how many instructional sections can each building accommodate?

We assess capacity based on:

- The number of full-size classrooms available in the building;
- The number of cluster rooms to which a school is entitled; and
- Historical enrollment increases and decreases at each grade level.

Seat Demand: How many students do we anticipate?

We assess demand – both from inside and outside the zone – based on:

- The historical number of Kindergarten students living in the zone;
- Historical Kindergarten waitlists and capping activity;
- Historical average class sizes;
- Historical zone retention rates (the percent of students who live in the zone and attend their zoned school);
- Historical zone enrollment rates (the percent of enrolled students who are also zoned to that school); and
- Anticipated Kindergarten growth, based on current/future housing developments.



Methodology – Determining the Zone Lines

To the extent possible, we draw zone lines in a way that:

- Achieves the targeted Kindergarten zone size for all affected schools;
- Addresses concerns of the local community;
- Accounts for residential construction and population growth within the affected areas;
- Accounts for geographic barriers (e.g. highways , district lines, etc.);
- Centrally locates the school within the zone, where possible;
- Minimizes the distance students must travel to attend their zoned school; and
- Maintains the diversity of schools.



Schools Affected by Rezoning

In the year prior to implementation:

DBN	School Name ¹	Grade Span	Total Enrollment ²	Total Org Capacity ³	Utilization %
24Q290	P.S. 290	K–3	267	N/A ⁴	-
24Q071	P.S. 071 Forest	K–5	978	1,004	97%
24Q153*	P.S. 153 Maspeth Elementary	K–6	1,450	1,175	123%
24Q305*	Learners and Leaders	K–3	385	285	135%
24Q081	P.S. 81 Jean Paul Richter	K–5	1,045	976	107%
24Q199	P.S. 199 Maurice A. Fitzgerald	K–4	1,034	803	129%

**This school currently offers a Pre-Kindergarten program.*

(1) In addition to the above schools, this rezoning would slightly impact the P.S. 91 zone, as it proposes to rezone students living on either side of Madison Street to 24Q071.

(2) Based on 2013-2014 budget projections; Enrollment figures for pre-kindergarten represent the full day equivalency.

(3) Based on 2012-2013 Blue Book Capacity.

(4) P.S. 290 is currently phasing in and is temporarily located in Q873. The capacity of P.S. 290's permanent space, Q290, will be 556. This is a preliminary capacity figure provided by the School Construction Authority (SCA) and is subject to change.



Department of
Education

Dennis M. Walcott, Chancellor

Impact of Rezoning – Kindergarten Zone Size

School Name	Current K Zone Size ¹	Planned K Zone Size	Change in K Zone Size
P.S. 290	-	50-70	-
P.S. 071 Forest	208	165-185	↓
P.S. 153 Maspeth Elementary	232	120-140	↓
New School at Q320	-	245-265	-
P.S. 305 Learners and Leaders	232		↑ ²
P.S. 81 Jean Paul Richter			
New School at Q313	-	65-85	-
P.S. 199 Maurice A. Fitzgerald	242	155-175	↓

(1) The current zone size is based on 2012-2013 Audited Register data as of October 26, 2012.

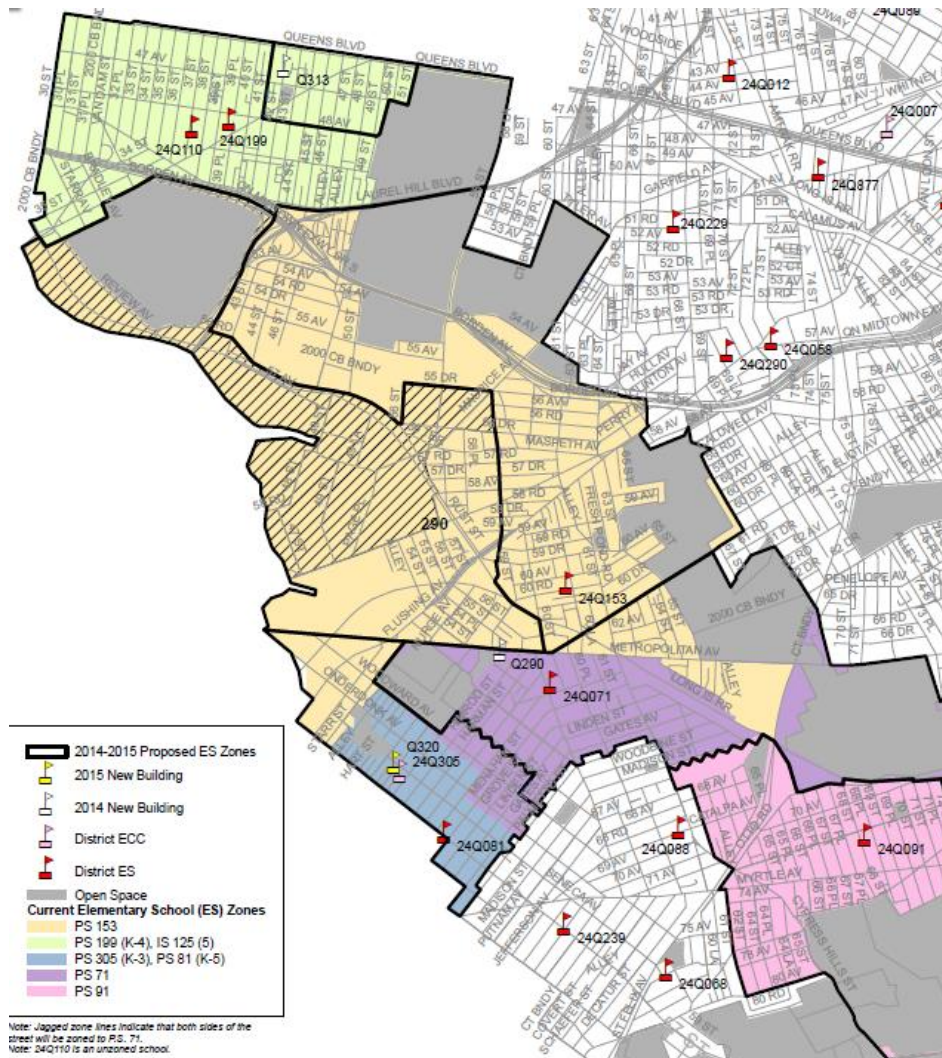
(2) The zone size is increasing to account for the new capacity.

Impact of Rezoning – Total Enrollment & Utilization

School Name	Current		Grade Span at Scale	Planned		Change
	Total Enrollment ¹	Utilization Rate		Total Enrollment	Utilization Rate	
P.S. 290 ²	267	-	K-5	510-550	90%-100%	-
P.S. 071 Forest	978	97%	K-5	775-850	75%-85%	↓
P.S. 153 Maspeth Elementary	1,450	123%	K-6	1,100-1,200	95%-105%	↓
New School at Q320 ²	-	-	K-5	395-480	90%-100%	New School
P.S. 305 Learners and Leaders	385	135%	K-3	225-265	85%-95%	↓
P.S. 81 Jean Paul Richter	1,045	107%	K-5	870-970	85%-95%	↓
New School at Q313 ²	-	-	K-5	410-510	100%-110%	New School
P.S. 199 Maurice A. Fitzgerald	1,034	129%	K-4	865-920	105%-115% ³	↓

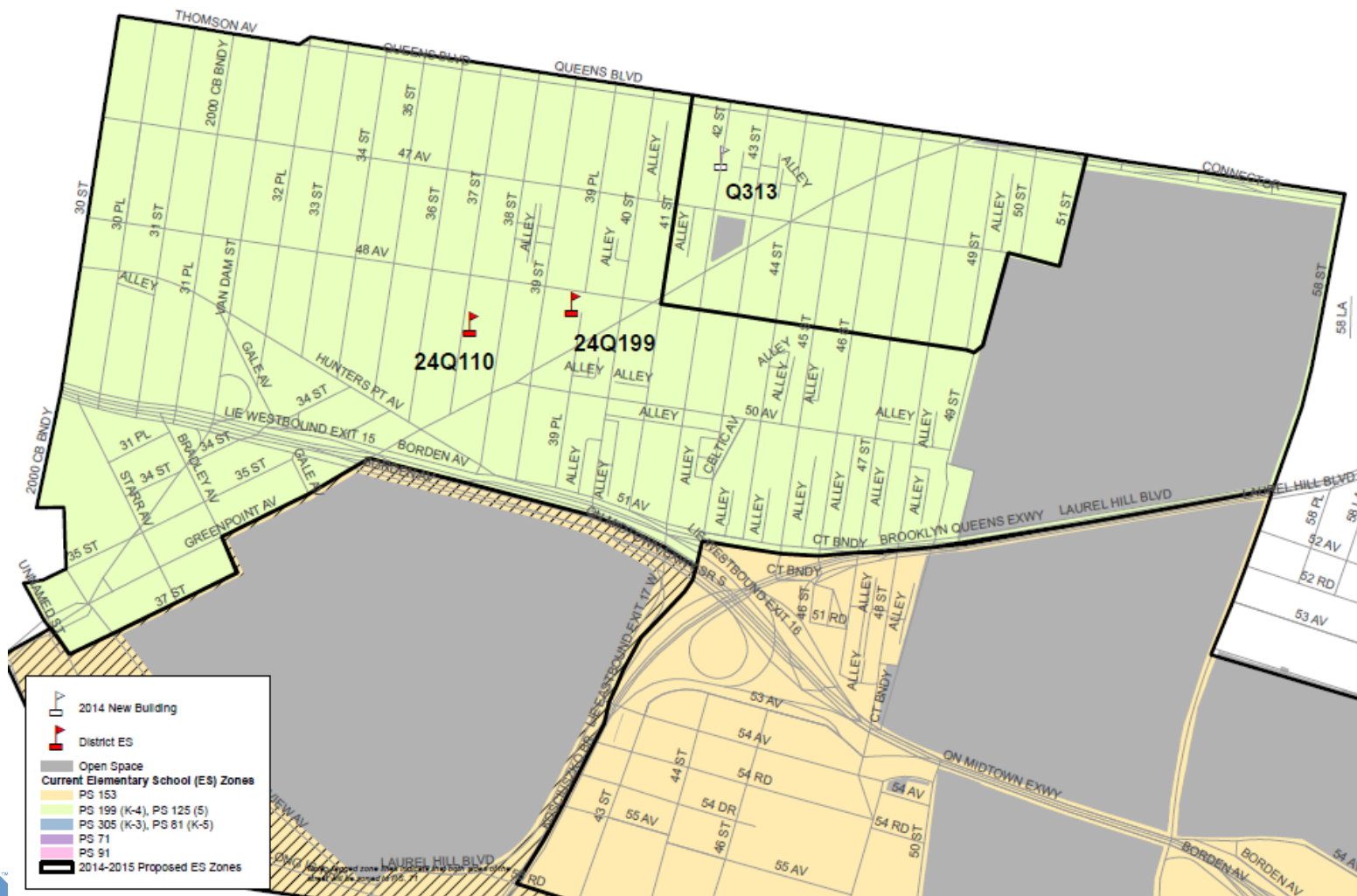
- (1) The current total enrollment is based on 2013-2014 budget projections; Enrollment figures for pre-kindergarten represent the full day equivalency.
- (2) The utilization rates at new buildings Q290, Q320, and Q313 are based on preliminary capacity figures provided by the School Construction Authority (SCA) and are subject to change.
- (3) Planned utilization at P.S. 199 does not account for additional capacity acquired at St. Teresa's (Q 777) . Renovations are anticipated to be completed in 2015.

Proposed Zone Lines



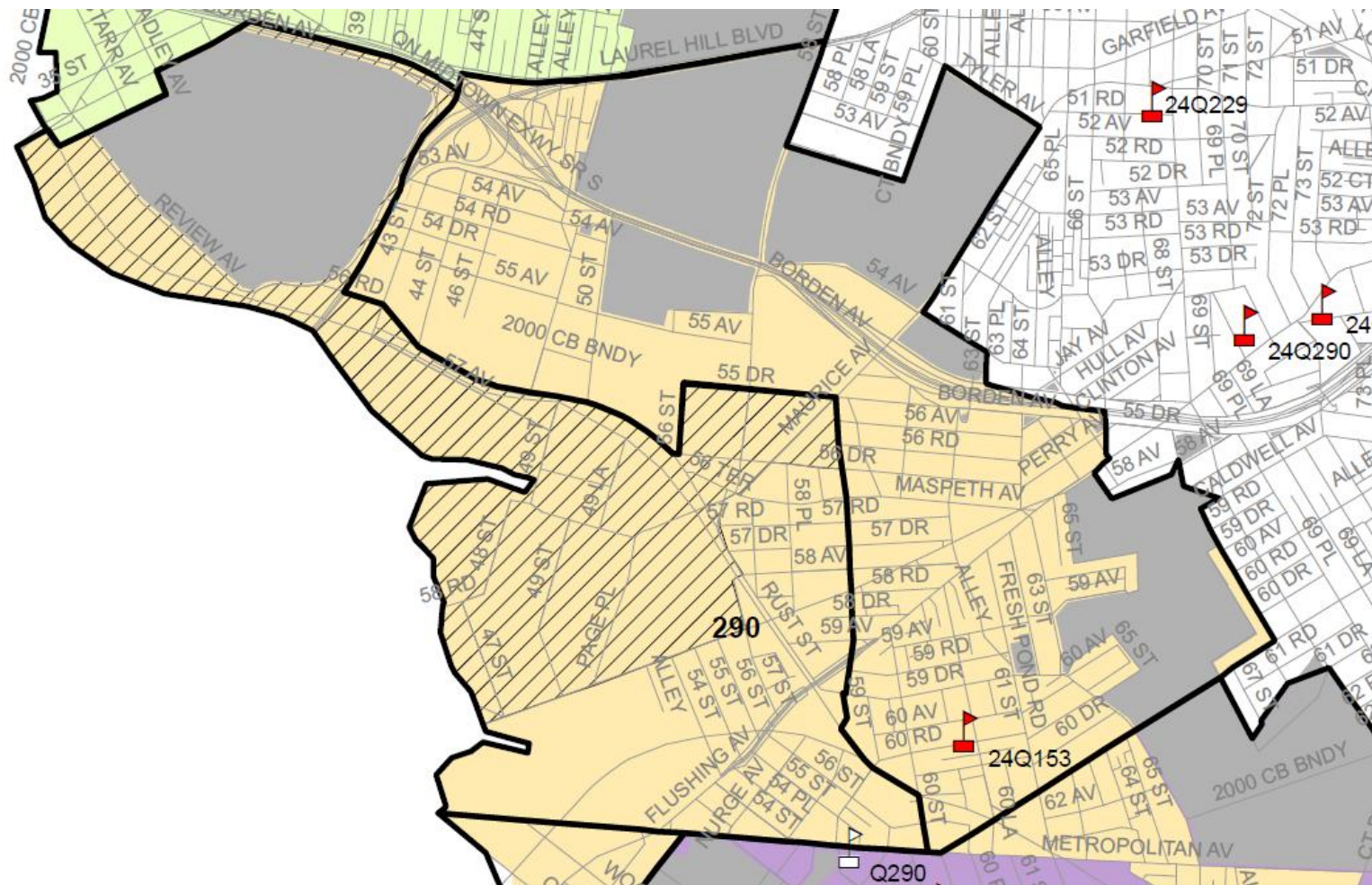
- (1) All zone lines run down the center of the street unless otherwise specified.
- (2) Jagged zone lines indicate that both sides of the street will be zoned to P.S. 71.

Proposed Zone Lines – 24Q199 and Q313



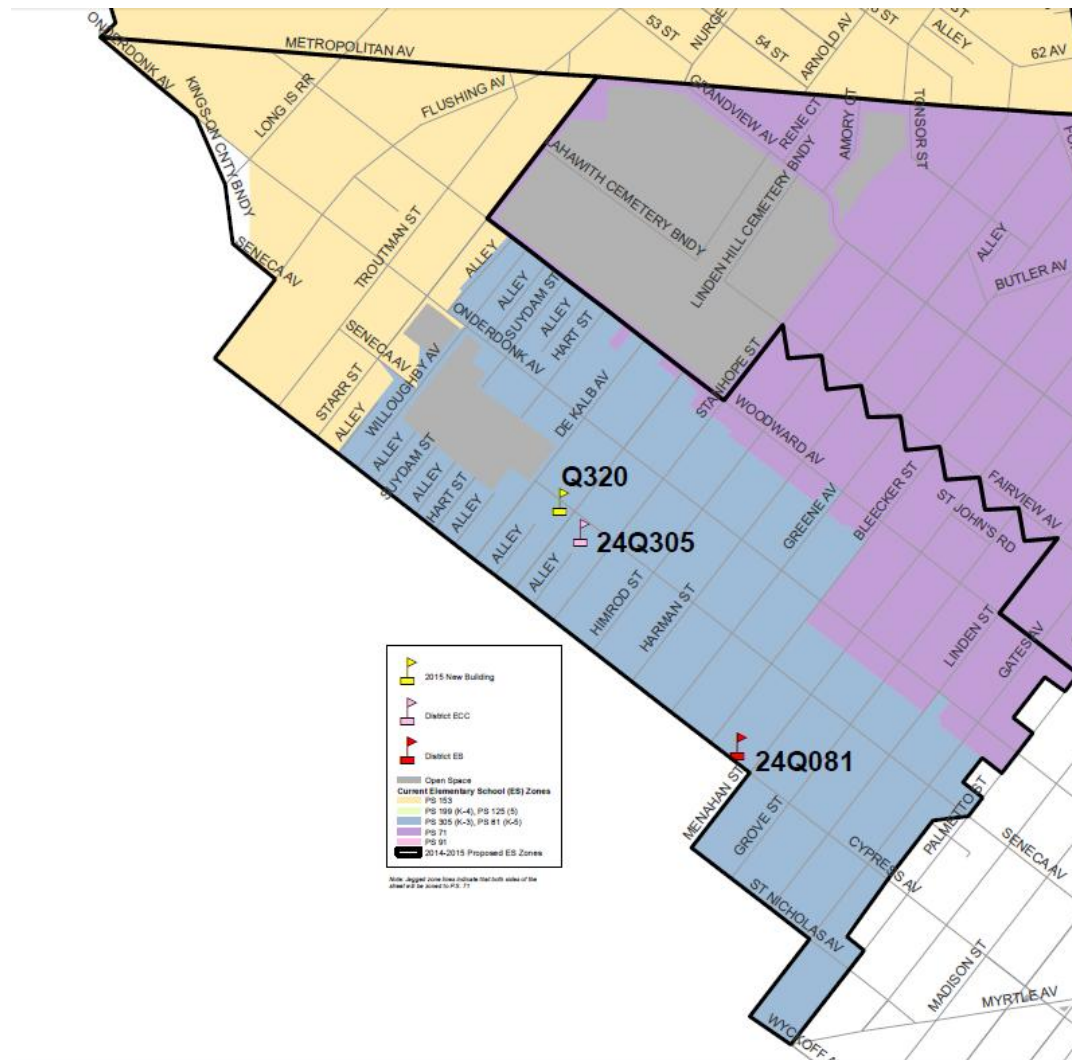
(1) All zone lines run down the center of the street unless otherwise specified.

Proposed Zone Lines – 24Q153 and 24Q290



- (1) All zone lines run down the center of the street unless otherwise specified.
- (2) Jagged zone lines indicate that both sides of the street will be zoned to P.S. 71.

Proposed Zone Lines – 24Q305, 24Q081, and Q320



- (1) All zone lines run down the center of the street unless otherwise specified.
- (2) Jagged zone lines indicate that both sides of the street will be zoned to P.S. 71.

Contact Information for Comments

Community
Superintendent

Phone: (718) 592-3357
Email: MChan2@schools.nyc.gov
Subject: D24 ES Zoning

CEC
Community
Education Council

Email: CEC24@schools.nyc.gov
Subject: D24 ES Zoning

OPM
Office of Portfolio
Management

Email: Queenszoning@schools.nyc.gov
Subject: D24 ES Rezoning



Department of
Education

Dennis M. Walcott, Chancellor

Appendix A – Admissions Process¹

Students will be enrolled in New York City elementary schools by the following priority:

- 1 - Zoned students whose verified siblings are pre-registered or enrolled at the time of application submission and will be enrolled in grades K-5 in the school at the start of the following school year
- 2 - Zoned students other than those in (1) above applying to the zoned school
- 3 - Students whose verified siblings are pre-registered or enrolled at the time of application submission and will be enrolled in grades K-5 in the school at the start of the following school year who are not zoned to the school,
 - a. Within District first, then
 - b. Out of District
- 4 - Students currently attending the school's pre-kindergarten program who reside outside the school's zone, *without* a sibling who will be in grades K-5 at the school in the following school year,
 - a. Within District first, then
 - b. Out of District
- 5 - Students other than those in (3a) and (4a) above who are residents of that district
- 6 - Students other than those in (3b) and (4b) who are residents of another district



Appendix B – Planned Section Counts

School Name	GE/ICT ¹				
	Pre-Kindergarten ²	Kindergarten	Grades 1-5	6-8	Self-Contained
P.S. 290	-	3	3	-	3
P.S. 071 Forest	-	5-6	5	-	5
P.S. 153 Maspeth Elementary	2	6	5-6	5-6	5
New School at Q320	-	2-3	2-3	-	3
P.S. 305 Learners and Leaders	1	2	2	-	2
P.S. 81 Jean Paul Richter	-	5-6	5	-	6
New School at Q313	-	3	2-3	-	3
P.S. 199 Maurice A. Fitzgerald	-	6-7	6	-	3

(1) Planned section counts include Gifted & Talented sections.

(2) Pre-Kindergarten is a program that can be offered both half-day and full-day. Planned section counts represent the full-day equivalency.



Department of
Education

Dennis M. Walcott, Chancellor

Appendix C – Planned Average Class Sizes

GE/ICT

School Name	Pre-Kindergarten	Kindergarten	Grades 1-5	Grades 6-8	Self-Contained
P.S. 290	-	25	28	-	12
P.S. 071 Forest	-	25	25	-	12
P.S. 153 Maspeth Elementary	18	24	28	28	12
New School at Q320	-	25	28	-	12
P.S. 305 Learners and Leaders	18	25	27	-	12
P.S. 81 Jean Paul Richter	-	25	27	-	12
New School at Q313	-	25	28	-	12
P.S. 199 Maurice A. Fitzgerald	-	25	29	-	12



Department of
Education

Dennis M. Walcott, Chancellor

Appendix D – Zone Retention and Enrollment Rates

School Name	Capped	K-Waitlist	Zone Retention Rate for Kindergarten		Zone Enrollment Rate for Kindergarten	
			Current ¹	Planned ²	Current	Planned ³
P.S. 290	No	No	-	90%	-	80%
P.S. 071 Forest	No	No	80%	75%	95%	90%
P.S. 153 Maspeth Elementary	No	Yes	81%	90%	94%	80%
New School at Q320	No	No	-	90%	-	90%
P.S. 305 Learners and Leaders	No	No	85%	90%	88%	90%
P.S. 81 Jean Paul Richter	No	No		90%		90%
New School at Q313	No	No	-	90%	-	90%
P.S. 199 Maurice A. Fitzgerald	No	No	89%	90%	99%	95%

- (1) The current rates (both zone retention and zone enrollment) are based on the 2012-2013 Audited Register as of October 26, 2012.
- (2) Planned retention rates are based on various factors, including but not limited to the historical number of zoned Kindergarten students that were waitlisted or overflowed due to capping, as well as three-year retention rate averages.
- (3) Planned enrollment rates are based on the assumed reduction in out-of-zoned enrollment and three-year enrollment rate averages..

Appendix E – Demographic Changes

School Name	Zone Percent Minority ¹	
	Current	Planned
P.S. 071 Forest	62%	56%
P.S. 153 Maspeth Elementary	61%	55%
P.S. 305 Learners and Leaders	92%	85%
P.S. 81 Jean Paul Richter		
Q320		
P.S. 199 Maurice A. Fitzgerald	91%	91%
P.S. 290	-	79%
Q313	-	89%

- (1) Zone Percent Minority figures are based on the ethnicity of zoned Kindergarten students as of the 2012 Audited Register. Students identified as “White – not of Hispanic origin” are not counted as minority.

