



Office of District Planning

*Rezoning Presentation to
CEC 24*



**Department of
Education**

Carmen Fariña, Chancellor

April 28/29, 2014

Table of Contents

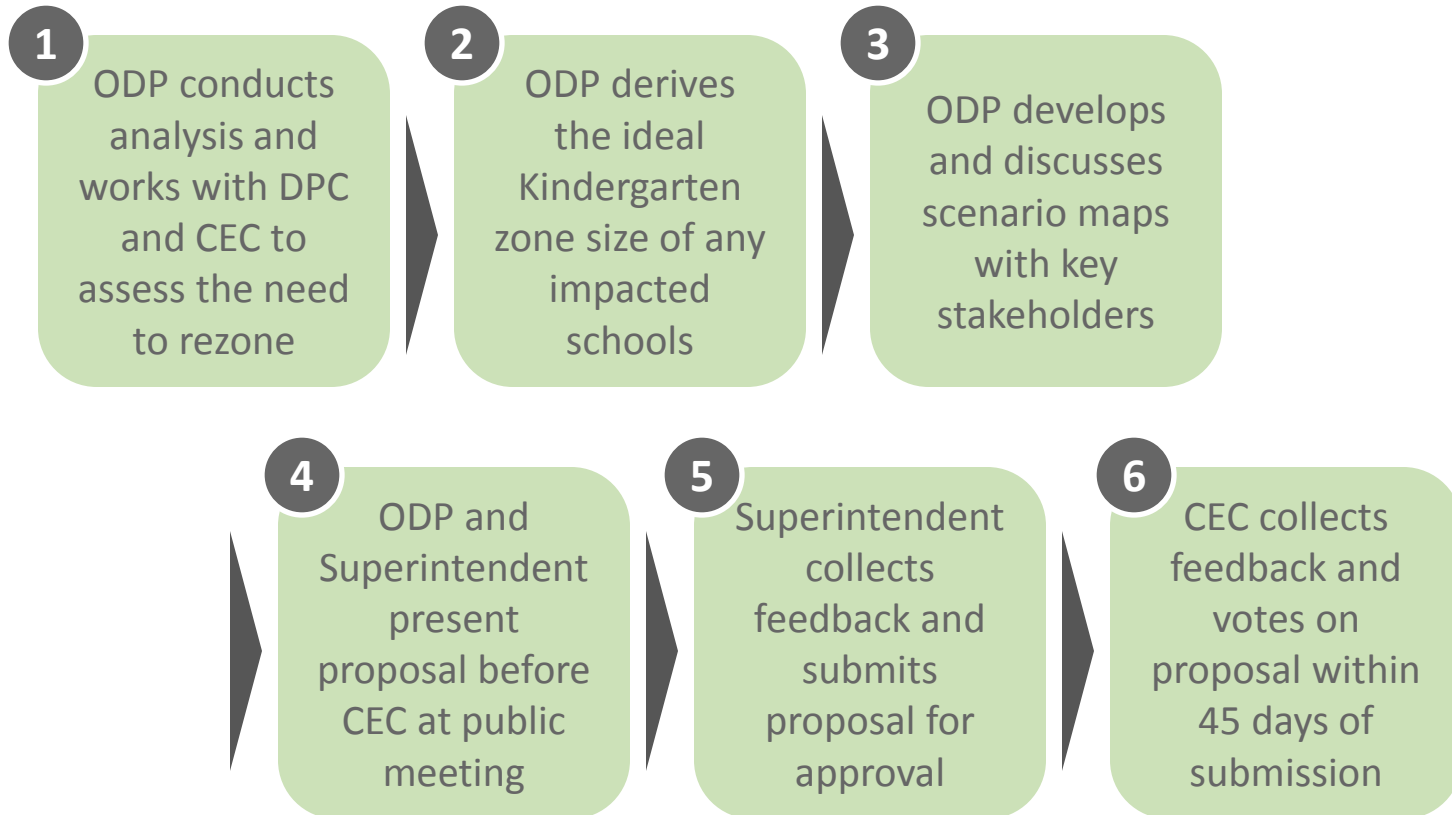
	Slide #
I. Rationale for Rezoning	3
II. Overview of the Rezoning Process	4
III. Guiding Policies and Principles	5
IV. Methodology	6-7
a. Determining the Target K Zone Size	
b. Determining the Zone Lines	
V. Schools Affected by Rezoning	8
VI. Impact of Rezoning	9-10
VII. Proposed Zone Lines	11
VIII. Contact Information for Comments	12
IX. Appendices	13-17
a. Admissions Process	
b. Planned Section Counts	
c. Planned Average Class Sizes	
d. Zoned Percentage Rates	

Rationale for Rezoning

- To create a zone for an elementary school in new building Q315, located at 96-18 43rd Avenue, slated to open for the 2015-2016 school year.
- To reduce the zone sizes of P.S. 307, P.S. 16, P.S. 19, and P.S. 13, and to reduce to the need to overflow students from these schools to other schools outside of the neighborhood.



Overview of Rezoning Process



Guiding Policies and Principles

- Pending approval by the CEC, the proposed changes would take effect for the 2015-2016 academic year.
- Pending approval by the CEC, the proposed changes would only impact incoming Kindergarten or new students to the system. All currently enrolled students may remain in their school until graduation.
- Sibling grandfathering, as determined by CEC 24, may be applicable.
- See Appendix A for the admissions process as outlined in the Chancellor's regulation A-101.
- The Office of Pupil Transportation (OPT) will follow standard procedure to determine bus service eligibility of general education students, as outlined by Chancellor's regulation A-801.



Methodology – Determining the Target K Zone Size

Seat Supply: What is the capacity of each school?

Specifically, how many instructional sections can each building accommodate?

We assess capacity based on:

- The number of full-size classrooms available in the building;
- The number of cluster rooms to which a school is entitled; and
- Historical enrollment increases and decreases at each grade level.

Seat Demand: How many students do we anticipate?

We assess demand – both from inside and outside the zone – based on:

- The historical number of Kindergarten students living in the zone;
- Historical Kindergarten waitlists and capping activity;
- Historical average class sizes;
- Historical zone retention rates (the percent of students who live in the zone and attend their zoned school);
- Historical zone enrollment rates (the percent of enrolled students who are also zoned to that school); and
- Anticipated Kindergarten growth, based on current/future housing developments.



Methodology – Determining the Zone Lines

To the extent possible, we draw zone lines in a way that:

- Achieves the targeted Kindergarten zone size for all affected schools;
- Addresses concerns of the local community;
- Accounts for residential construction and population growth within the affected areas;
- Avoids forcing students to cross geographic barriers (e.g. highways , district lines, etc.);
- Centrally locates the school within the zone;
- Minimizes the distance students must travel to attend their zoned school; and
- Maintains the diversity of schools.



Schools Affected by Rezoning

In the current school year (2013-2014):

DBN	School Name	Grade Span	Total Enrollment ¹	Total Org Capacity ²	Utilization %
24QTBD	School in Building Q315	-	-	-	-
24Q307	Pioneer Academy	K-5	974	763	128%
24Q016	P.S. Q016 The Nancy DeBenedittis School	K-5	1,737	1,223	142%
24Q019	P.S. 019 Marino Jeantet	K-5	1,961	1,655 ³	118%
24Q013	P.S. 013 Clement C. Moore	K-5	1,607	1,203	134%



**Department of
Education**

Carmen Fariña, Chancellor

(1) Based on Audited Register as of October 31, 2013

(2) Based on 2012-2013 Blue Book Capacity

(3) Includes the capacity of P.S. 19's annex in Q269. This capacity is new for the 2013-2014 school year and therefore not accounted for in the 2012-2013 Blue Book.

Impact of Rezoning – Kindergarten Zone Size

School Name	Current K Zone Size ¹	Planned K Zone Size	Change in K Zone Size
School in Building Q315	-	180-190	-
Pioneer Academy	234	165-175	↓
P.S. Q016 The Nancy DeBenedittis School	244	200-210	↓
P.S. 019 Marino Jeantet	413	350-360	↓
P.S. 013 Clement C. Moore	308	280-290	↓

Impact of Rezoning – Total Enrollment & Utilization

School Name	Planned				Change ³
	Grade Span at Scale	Total Enrollment ¹	Total Org Capacity ²	Utilization Rate	
School in Building Q315	K-5	1,180-1,280	1,038 ⁴	105%-115%	-
Pioneer Academy	K-5	935-1,035	763	125%-135%	No Change
P.S. Q016 The Nancy DeBenedittis School	K-5	1,670-1,770	1,223	135%-145%	No Change
P.S. 019 Marino Jeantet	K-5	1,930-2,030	1,655	115%-125%	No Change
P.S. 013 Clement C. Moore	K-5	1,580-1,680	1,203	130%-140%	No Change

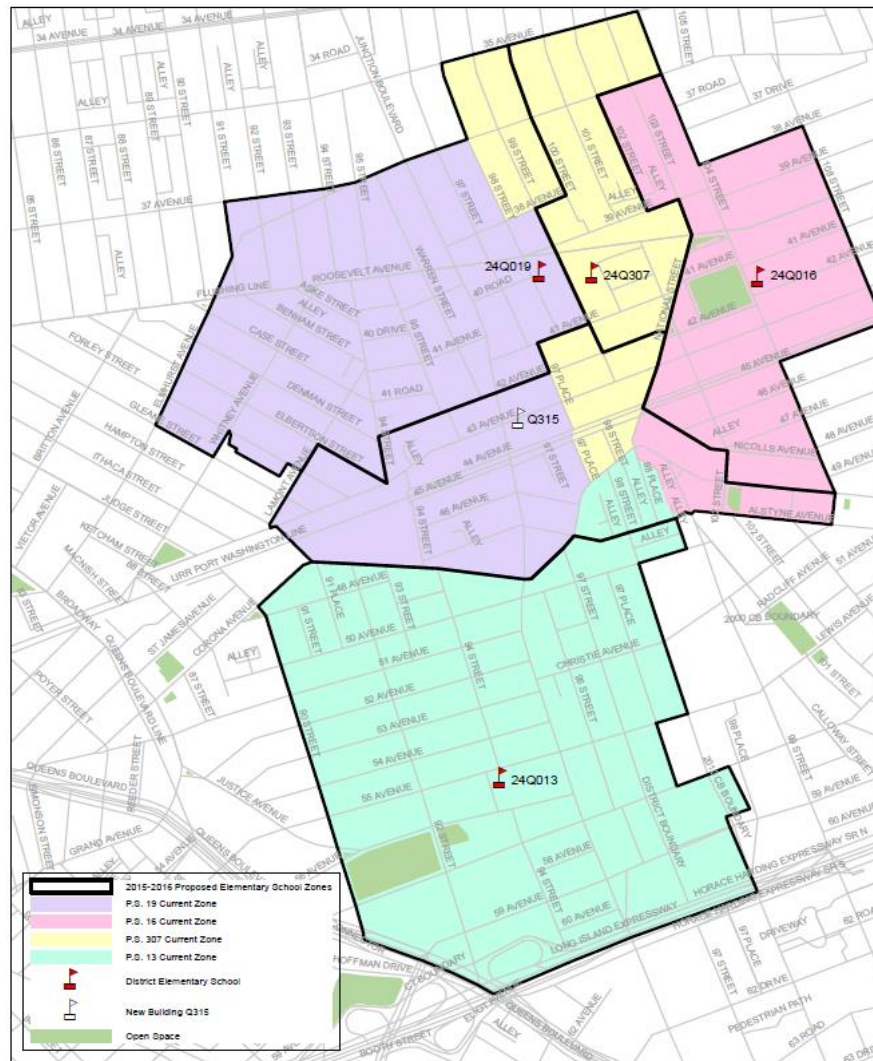
(1) See appendix for assumed number of sections and average class sizes used to derive total enrollment.

(2) Based on 2012-2013 Blue Book Capacity

(3) Due to an increasing number of residents living within these schools' zones, the projected enrollment at P.S. 307, P.S. 16, P.S. 19, and P.S. 13 is not expected to change.

(4) Preliminary capacity provided by the School Construction Authority (SCA). Capacity is subject to change.

Proposed Zone Lines



(1) All zone lines run down the center of the street unless otherwise specified.

Contact Information and Next Steps

- Community sends feedback to Superintendent, CEC, and ODP
- CEC and ODP will take feedback into account
- The CEC is expected to vote on May 27, 2014

Community
Superintendent

Phone: (718) 592-3357
Email: MChan2@schools.nyc.gov
Subject: D24 Zoning

CEC
Community
Education Council

Email: CEC24@schools.nyc.gov
Subject: D24 Zoning

ODP
Office of District
Planning

Email: QueensZoning@schools.nyc.gov
Subject: D24 Zoning

Appendix A – Admissions Process¹

Students will be enrolled in New York City elementary schools by the following priority:

- 1 - Zoned students whose verified siblings are pre-registered or enrolled at the time of application submission and will be enrolled in grades K-5 in the school at the start of the following school year
- 2 - Zoned students other than those in (1) above applying to the zoned school
- 3 - Students whose verified siblings are pre-registered or enrolled at the time of application submission and will be enrolled in grades K-5 in the school at the start of the following school year who are not zoned to the school,
 - a. Within District first, then
 - b. Out of District
- 4 - Students currently attending the school's pre-kindergarten program who reside outside the school's zone, *without* a sibling who will be in grades K-5 at the school in the following school year,
 - a. Within District first, then
 - b. Out of District
- 5 - Students other than those in (3a) and (4a) above who are residents of that district
- 6 - Students other than those in (3b) and (4b) who are residents of another district

(1) Please refer to Chancellor's Regulation A-101 for further information.

Appendix B – Planned Section Counts

GE/ICT

School Name	Kindergarten	Grades 1-2	Grades 3-5	Self-Contained
School in Building Q315	7	6	6	5
Pioneer Academy	6	5	5	5
P.S. Q016 The Nancy DeBenedittis School	9	8	10 - 11	7
P.S. 019 Marino Jeantet	13	12	12	8
P.S. 013 Clement C. Moore	11	9	9	4



Appendix C – Planned Average Class Sizes

GE/ICT

School Name	Kindergarten	Grades 1-2	Grades 3-5	Self-Contained
School in Building Q315	25	30	30	12
Pioneer Academy	25	31	31	12
P.S. Q016 The Nancy DeBenedittis School	25	29	30	12
P.S. 019 Marino Jeantet	25	26	26	12
P.S. 013 Clement C. Moore	25	29	29	12

Appendix D – Zone Retention and Enrollment Rates

	Historic Kindergarten Capping and Waitlist ¹		Zone Retention Rate for Kindergarten		Zone Enrollment Rate for Kindergarten	
School Name	Capped K	K-Waitlist	Current ¹	Planned ²	Current	Planned
School in Building Q315	-	-	-	85%-95%	-	90%-100%
Pioneer Academy	Yes	Yes	34%	80%-90%	92%	90%-100%
P.S. Q016 The Nancy DeBenedittis School	No	No	93%	90%-100%	94%	80%-90% ³
P.S. 019 Marino Jeantet	No	Yes	82%	80%-90%	83%	90%-100%
P.S. 013 Clement C. Moore	Yes	No	84%	80%-90%	89%	85%-95%

- (1) The current rates (both zone retention and zone enrollment) are based on the 2013 Audited Register as of October 31, 2013.
- (2) Planned retention rates are based on various factors, including but not limited to the historical number of zoned Kindergarten students that were waitlisted or overflowed due to capping.
- (3) Accounts for out-of-zone enrollment in P.S. 16's gifted and talented program.

Appendix E – Demographic Changes

School Name	Zone Percent Minority ¹	
	Current	Planned
School in Building Q315	-	95%-100%
Pioneer Academy	95%-100%	95%-100%
P.S. Q016 The Nancy DeBenedittis School	95%-100%	95%-100%
P.S. 019 Marino Jeantet	95%-100%	95%-100%
P.S. 013 Clement C. Moore	95%-100%	95%-100%