



**Department of  
Education**

**Office of District Planning  
Division of Space Management**

## **Proposal for the Creation of a New Zone for P.S. 211 and for the Rezoning of P.S. 13, P.S. 14, P.S. 16, P.S. 28, P.S. 89, and P.S. 110**

**Presented to:  
Community Education Council 24**

*May 23, 2017*

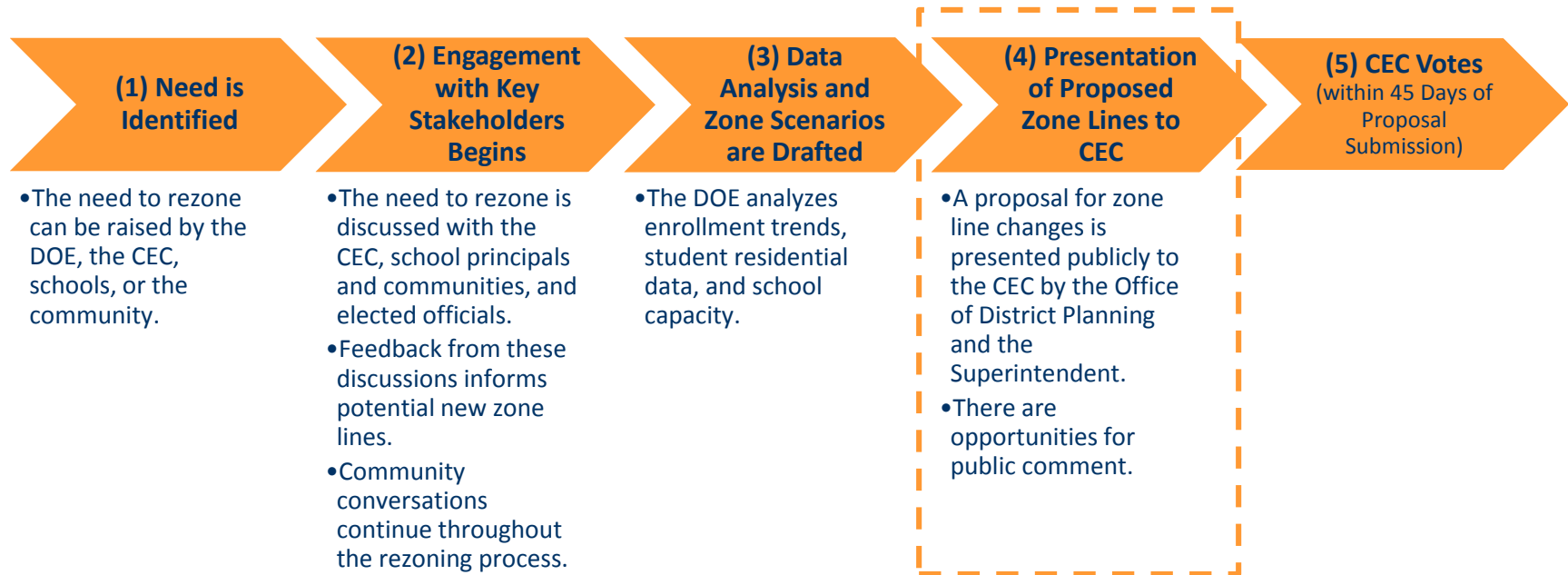
# Agenda

---

- Review Process and Timeline
- Review Rezoning Rationale and Methodology
- Proposed Scenario and Impact
- Next Steps
- Questions and Answers



# Overview of Rezoning Process & Timeline



## Timeline for 2018 Implementation



# Rationale



# New Elementary School Building Q298



- Located at 50-51 98<sup>th</sup> Street
- Will house P.S. 211, currently located in building Q269 at 86-37 53<sup>rd</sup> Ave
- Anticipated to open for the 2017-2018 school year
- Capacity: 796 elementary school seats

# Why Rezone in District 24?

---

P.S. 211 is an un-zoned elementary school that currently serves as an overflow site for the district, serving students from nearby, overcrowded elementary schools that cannot accommodate their zoned population.

Creating a zone for P.S. 211 Elm Tree Elementary School in building Q298 has the potential to:

- Help reduce overcrowding at nearby elementary schools in the Corona area; and
- Provide stable enrollment at P.S. 211.



# Why Rezone in District 24 (cont'd)?

---

This rezoning would also help ensure that:

- Each school in this area has an appropriate zone size;
- The need to cap and overflow students is reduced; and
- The number of zoned students who are waitlisted is reduced.



# Guiding Policies and Principles for Rezoning

- Pending approval by the CEC in June 2017, proposed changes would take effect for the 2018-2019 academic year.
- Pending approval by the CEC, proposed changes would primarily impact incoming pre-kindergarten, kindergarten, or new students to the system. All currently enrolled students in grades K-5 may remain in their school until graduation.
- Sibling Grandfathering: When applying to a school impacted by a rezoning, currently zoned children entering pre-kindergarten and kindergarten with a sibling in grades K-5 at that school will maintain their zoned sibling priority.
- All impacted schools will continue to admit students according to Chancellor's regulation A-101.
- The Office of Pupil Transportation (OPT) will follow standard procedure to determine bus service eligibility of general education students, as outlined by Chancellor's regulation A-801.





# Methodology

# Methodology – Determining the Target K Zone Size

## Seat Supply: What is the capacity of each school?

Specifically, how many instructional sections (i.e. classes) and how many students can each building accommodate?

The DOE assesses capacity based on:

- Full-size classrooms available in the building
- Cluster rooms and administrative space a school is entitled to per the Citywide Instructional Footprint
- Historical enrollment increases and decreases at each grade level



# Methodology – Determining the Target K Zone Size

## Seat Demand: How many students do we anticipate?

We assess demand – both from inside and outside the zone – based on:

- The historical number of kindergarten students living in the zone;
- Historical kindergarten waitlists and capping activity;
- Historical average class sizes;
- Historical zone retention rates (the percent of students who live in the zone and attend their zoned school);
- Historical zone enrollment rates (the percent of enrolled students who are also zoned to that school); and
- Anticipated kindergarten growth, based on current/future housing developments.



# Methodology – Determining the Zone Lines

## Zone lines: How should the new zone be drawn?

To the extent possible, we draw zone lines in a way that:

- Contain the appropriate number of residents for a school's size, based on recent public school enrollment trends.
- Take into consideration other factors, such as:
  - New residential construction
  - Diversity
  - Geographic barriers
  - Travel distance

# Schools Impacted by Proposed Rezoning

In the current school year (2016-2017):

DBN	School Name	Grade Span	Principal Name	Total Enrollment <sup>1</sup>	Total Org Capacity <sup>2</sup>	Utilization %
24Q013	P.S. 13 Clement C. Moore	K-5	Evelyn Velez	1,606	1,336	120%
24Q014	P.S. 14 Fairview	K-5	Heather Benson	1,784	1,324	135%
24Q016	P.S. 16 The Nancy DeBenedittis School	K-5	Elaine Iodice	1,660	1,209	137%
24Q028	P.S. 28 The Thomas Emanuel ECC	K-2 <sup>3</sup>	Laura Pessutti	527	297	177%
24Q089	P.S. 89 Elmhurst	K-5	Laura La Sala	1,995	1,349	148%
24Q110	P.S. 110	K-4 <sup>4</sup>	Elisa Gomez	607	387	157%
24Q211	P.S. 211 Elm Tree Elementary School	K-3 <sup>4</sup>	Donna Estro	270	235	115%

(1) Based on 2016 Audited Register as of October 31, 2016. Enrollment figures include pre-kindergarten enrollment where applicable.

(2) Based on 2015-2016 Blue Book Capacity.

(3) School also serves a pre-kindergarten program.

(4) School is currently phasing in and will be K-5 at scale.

# Impact of Rezoning: Capping and Waitlists

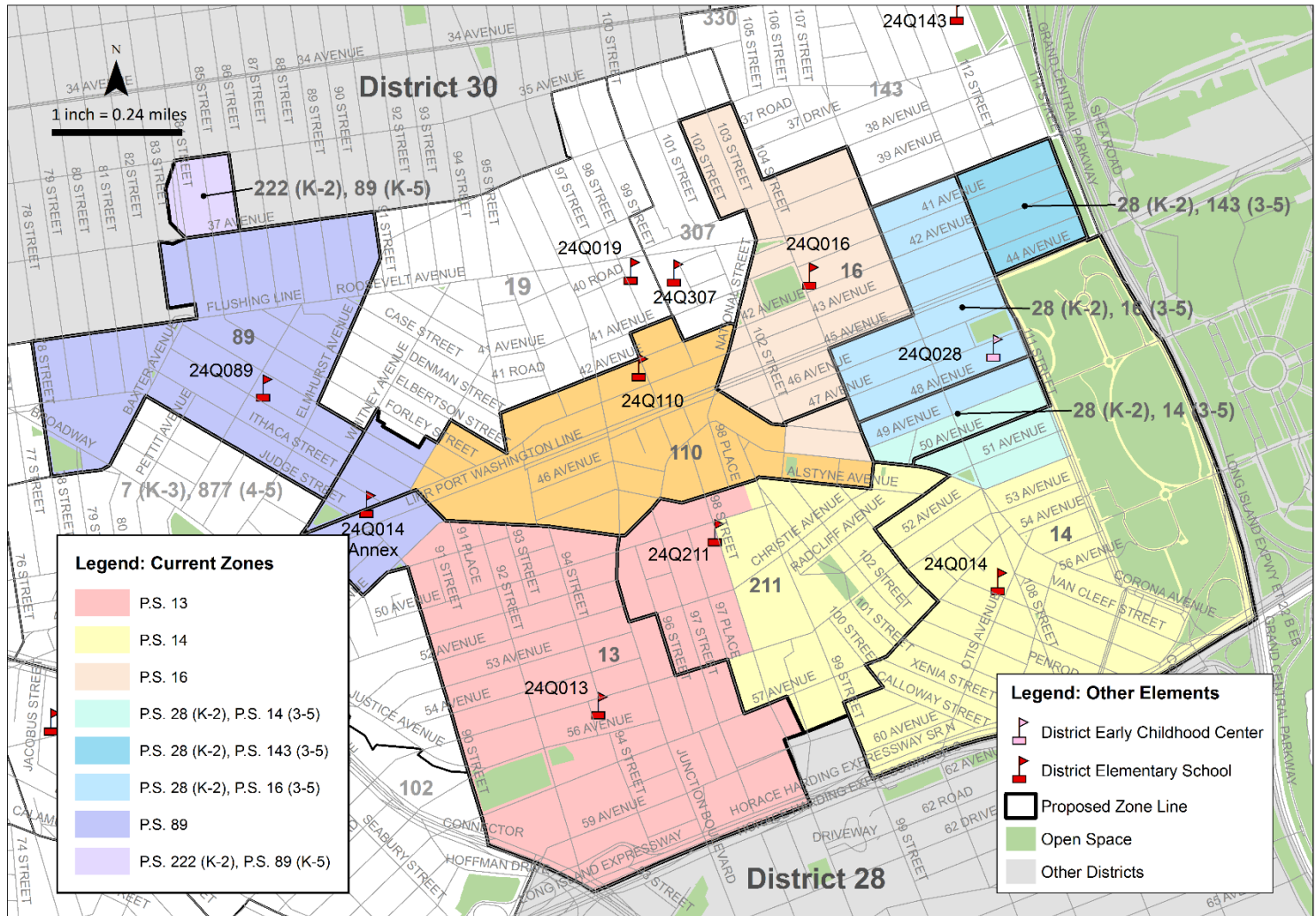
School Name	2016-2017 K Capping	2016-2017 K Zoned Waitlist	2017-2018 K Zoned Waitlist
P.S. 13 Clement C. Moore	Y	Y	Y
P.S. 14 Fairview	Y	Y	N
P.S. 16 The Nancy DeBenedittis School	N	N	N
P.S. 28 The Thomas Emanuel ECC	Y	N	N
P.S. 89 Elmhurst	N	N	Y
P.S. 110	N	Y	N
P.S. 211 Elm Tree Elementary School	-	-	-

# Impact of Rezoning: Projected Zone Size At Scale

School Name	Current Zone Size <sup>1</sup>	Projected K Zone Size	Change in Zone Size
P.S. 13 Clement C. Moore	298	275 - 285	↓
P.S. 14 Fairview	320	215 - 225	↓
P.S. 16 The Nancy DeBenedittis School	183	160 - 170	↓
P.S. 28 The Thomas Emanuel ECC	173	145 - 155	↓
P.S. 89 Elmhurst	323	285-295	↓
P.S. 110	148	195-205	↑
P.S. 211 Elm Tree Elementary School	-	155-165	↑

(1) The current zone size is based on the 2016 Audited Register as of October 31, 2016.

# Proposed Zone Lines for 2018-19 Implementation: District 24 Corona/Elmhurst





# Impact of Rezoning: Current Utilization

School Name	Current Grade Span	Current Enrollment <sup>1</sup>	Total Org Capacity <sup>2</sup>	Current Utilization
P.S. 13 Clement C. Moore	K-5	1,606	1,336	120%
P.S. 14 Fairview	K-5	1,784	1,324	135%
P.S. 16 The Nancy DeBenedittis School	K-5	1,660	1,209	137%
P.S. 28 The Thomas Emanuel ECC <sup>3</sup>	K-2	527	297	177%
P.S. 89 Elmhurst	K-5	1,995	1,349	148%
P.S. 110 <sup>4</sup>	K-4	607	387	157%
P.S. 211 Elm Tree Elementary School	K-3	270	235	115%

(1) Based on 2016-2017 Audited Register. Enrollment figures include pre-kindergarten enrollment where applicable.

(2) Based on target capacity from the 2015-2016 Blue Book.

(3) School also serves a pre-kindergarten program.

(4) P.S. 110's capacity and utilization are not reflective of space in the entire Q315 building, which it temporarily shares with other schools. When P.S. 110 is the only organization in building Q315, it is anticipated to have a capacity of 1,010 students.

# Impact of Rezoning: Utilization at Scale

School Name	Projected At Scale				Change in Utilization
	Grade Span	Total Enrollment <sup>1</sup>	Total Org. Capacity <sup>2</sup>	Projected Utilization <sup>3</sup>	
P.S. 13 Clement C. Moore	K-5	1,525 - 1,585	1,336	114% - 119%	↓
P.S. 14 Fairview	K-5	1,420 - 1,480	1,324	107% - 112%	↓
P.S. 16 The Nancy DeBenedittis School	K-5	1,326 - 1,386	1,128	118% - 123%	↓
P.S. 28 The Thomas Emanuel ECC <sup>4</sup>	K-2	480 - 510	297	162% - 172%	↓
P.S. 89 Elmhurst	K-5	1,686 - 1,746	1,349	125% - 129%	↓
P.S. 110	K-5	1,188 - 1,248	1,010	118% - 124%	↓
P.S. 211 Elm Tree Elementary School <sup>4</sup>	K-5	942 - 1,002	796	118% - 126%	↑

(1) See Appendix D and E for assumed number of sections and average class sizes used to derive total enrollment.

(2) Based on target capacity from the 2015-2016 Blue Book and planned capacity changes, including the loss of P.S. 16's annex, the opening of building Q298, and P.S. 110 assuming the entire capacity of building Q315.

(3) All utilization rates refer to organizational capacity.

(4) School also serves pre-kindergarten.

# Contact Information

---

Please direct any questions, concerns, or feedback to:

Community  
Superintendent

Phone: 718-592-3357  
Email: [MChan2@schools.nyc.gov](mailto:MChan2@schools.nyc.gov)  
Subject: District 24 Zoning

CEC  
Community  
Education Council

Email: [cec24@schools.nyc.gov](mailto:cec24@schools.nyc.gov)  
Subject District 24 Zoning

ODP  
Office of District  
Planning

Email: [QueensZoning@schools.nyc.gov](mailto:QueensZoning@schools.nyc.gov)  
Subject: District 24 Zoning

---

---

## Questions & Answers



# Appendix



# Appendix

---

- A. Admissions Process
- B. Section Counts
- C. Average Class Size
- D. Zone Demand
- E. Zone Demographics- FRL & HRA
- F. Zone Demographics- Ethnicity
- G. Students by Census Block
- H. Rezoning Engagement
- I. Map Details for Zones Affected by the Proposal



# Appendix A.1 Admissions Process<sup>1</sup>: Pre-Kindergarten

1. Students residing in the zone, who have a sibling pre-registered or enrolled at the time of application submission and will be enrolled in grades K-5 in the school at the start of the following school year.<sup>1</sup>
2. Students residing in the zone, who do not have a sibling at the school.<sup>1</sup>
3. Students residing in the district, who have a sibling at the school,
  - a. who have no zoned school or whose zoned school has no pre-K program, then
  - b. who are zoned to a different school which has a pre-K program.
4. Students residing in the borough, who have a sibling at the school.
5. Students residing out-of-borough, who have a sibling at the school.
6. Students residing in the district,
  - a. who have no zoned school or whose zoned school has no pre-K program, then
  - b. who are zoned to a different school which has a pre-K program.
7. Students residing in the borough.
8. Students residing out-of-borough.



## Appendix A.2 Admissions Process<sup>1</sup>: Kindergarten

Students will be enrolled in New York City elementary schools by the following priority:

1. Zoned students whose verified siblings are pre-registered or enrolled at the time of application submission and will be enrolled in grades K-5 in the school at the start of the following school year
2. Zoned students other than those in (1) above applying to the zoned school
3. Students whose verified siblings are pre-registered or enrolled at the time of application submission and will be enrolled in grades K-5 in the school at the start of the following school year who are not zoned to the school,
  - a. Within District first, then
  - b. Out of District
4. Students currently attending the school's pre-kindergarten program who reside outside the school's zone, *without* a sibling who will be in grades K-5 at the school in the following school year,
  - a. Within District first, then
  - b. Out of District
5. Students other than those in (3a) and (4a) above who are residents of that district
6. Students other than those in (3b) and (4b) who are residents of another district

(1) Please refer to Chancellor's Regulation A-101 for further information.



## Appendix B.1: 2016-2017 Section Counts

GE/ICT<sup>1</sup>

School Name	Grades	PK	K	Grades 1-2	Grades 3-5	Self-Contained
P.S. 13 Clement C. Moore	K-5	-	10	8-9	8-9	8
P.S. 14 Fairview <sup>2</sup>	K-5	-	9	9-10	10-11	11
P.S. 16 The Nancy DeBenedittis School <sup>3,4</sup>	K-5	-	8	7-8	10	9
P.S. 28 The Thomas Emanuel ECC	K-2	1	6	5-6	-	4
P.S. 89 Elmhurst	K-5	-	12	10	10-11	9
P.S. 110	K-4	-	8	4-7	2	2
P.S. 211 Elm Tree Elementary School	K-3	-	4	2-3	2	2

(1) GE/ICT Section count is based on the 2016 Audited Register as of October 31, 2016.

(2) P.S. 14 receives 1 section of zoned students from P.S. 28 in Grade 3, which is expected to continue following the rezoning.

(3) Does not include 1 section of 10 G&T students that P.S. 16 will cease to serve beginning in 2017-2018.

(4) P.S. 16 receives 3 sections of zoned students from P.S. 28 in Grade 3, which is expected to continue following the rezoning.

## Appendix B.2: Projected Section Counts

GE/ICT<sup>1</sup>

School Name	Grades	PK	K	Grades 1-2	Grades 3-5	Self-Contained
P.S. 13 Clement C. Moore	K-5	-	10	9	9	8
P.S. 14 Fairview <sup>1</sup>	K-5	-	8	7	8	9
P.S. 16 The Nancy DeBenedittis School <sup>2,3</sup>	K-5	-	7	6	9	7
P.S. 28 The Thomas Emanuel ECC	K-2	1	6	5	-	4
P.S. 89 Elmhurst	K-5	-	11	9	9	8
P.S. 110	K-5	-	8	7	7	4
P.S. 211 Elm Tree Elementary School	K-5	2	6	5	5	6

(1) P.S. 14 receives 1 section of zoned students from P.S. 28 in Grade 3, which is expected to continue following the rezoning.

(2) P.S. 16 currently serves 1 section of 10 G&T students in kindergarten, which it will not serve beginning in 2017-2018.

(3) P.S. 16 receives 3 sections of zoned students from P.S. 28 in Grade 3, which is expected to continue following the rezoning.



**Department of  
Education**  
Carmen Fariña, Chancellor

## Appendix C.1: 2016-2017 Average Class Sizes

GE/ICT<sup>1</sup>

School Name	Kindergarten	Grades 1-2	Grades 3-5	Self-Contained
P.S. 13 Clement C. Moore	25	31	29	11
P.S. 14 Fairview	25	27	30	10
P.S. 16 The Nancy DeBenedittis School	22	29	31	12
P.S. 28 The Thomas Emanuel ECC	27	28	-	11
P.S. 89 Elmhurst	25	31	31	12
P.S. 110	23	28	25	12
P.S. 211 Elm Tree Elementary School	22	21	21	11

## Appendix C.2: Projected Average Class Sizes

GE/ICT

School Name	Kindergarten	Grades 1-2	Grades 3-5	Self-Contained
P.S. 13 Clement C. Moore	24 - 25	26 - 28	26 - 28	10 - 11
P.S. 14 Fairview	24 - 25	30 - 32	30 - 32	9 - 10
P.S. 16 The Nancy DeBenedittis School	24 - 25	28 - 29	28 - 29	11 - 12
P.S. 28 The Thomas Emanuel ECC	23 - 25	28 - 30	-	10 - 11
P.S. 89 Elmhurst	24 - 25	29 - 31	29 - 31	11 - 12
P.S. 110	24 - 25	27 - 29	27 - 29	11 - 12
P.S. 211 Elm Tree Elementary School	23 - 25	28 - 30	28 - 30	10 - 11



## Appendix D: Zone Demand

School Name	Zoned Retention Rate (% of the zone that enrolls in its zoned school)		Zoned Enrollment Rate (% of total kindergarten enrollment that comes from its zone)	
	Current <sup>1</sup>	Projected	Current <sup>1</sup>	Projected
P.S. 13 Clement C. Moore	77%	75% - 85%	89%	85% - 95%
P.S. 14 Fairview	70%	80% - 90%	95%	90% - 100%
P.S. 16 The Nancy DeBenedittis School	93%	85% - 95%	84%	85% - 95%
P.S. 28 The Thomas Emanuel ECC	87%	85% - 95%	86%	85% - 95%
P.S. 89 Elmhurst	88%	80% - 90%	92%	90% - 100%
P.S. 110	76%	80% - 90%	60%	85% - 95%
P.S. 211 Elm Tree Elementary School	-	75% - 85%	-	85% - 95%



(1) The current rates (both zone retention and zone enrollment) are based on the 2016 Audited Register as of October 31, 2016.

# Appendix E: Zone Demographic Changes – Free & Reduced Price Lunch or HRA Eligibility

School Name	Zone Percent Free & Reduced Price Lunch or HRA Eligible <sup>1</sup>	
	2016 - 2017 School Year	Projected
P.S. 13 Clement C. Moore	48%	45% - 55%
P.S. 14 Fairview	66%	55% - 65%
P.S. 16 The Nancy DeBenedittis School	60%	55% - 65%
P.S. 28 The Thomas Emanuel ECC	64%	60% - 70%
P.S. 89 Elmhurst	55%	50% - 60%
P.S. 110	90%	75% - 85%
P.S. 211 Elm Tree Elementary School	-	60% - 70%

(1) Zone Percent Free & Reduced Lunch or HRA eligibility figures are based on the eligibility of zoned kindergarten students from the 2016 - 2017 Audited Register. Figures do not necessarily represent the demographics of the school.

## Appendix F.1: Zone Demographic Changes – Ethnicity

School Name	Zone Percent Non-White <sup>1</sup>	
	2016 - 2017 School Year	Projected
P.S. 13 Clement C. Moore	93%	85% - 95%
P.S. 14 Fairview	98%	90% - 100%
P.S. 16 The Nancy DeBenedittis School	98%	90% - 100%
P.S. 28 The Thomas Emanuel ECC	98%	90% - 100%
P.S. 89 Elmhurst	97%	90% - 100%
P.S. 110	98%	90% - 100%
P.S. 211 Elm Tree Elementary School	-	90% - 100%

## Appendix F.2: Zone Demographic Changes – Ethnicity

Zone Demographics - Current Ethnicity<sup>1</sup>

School Name	Black	Hispanic	Asian	White	Other
P.S. 13 Clement C. Moore	8%	50%	33%	7%	1%
P.S. 14 Fairview	5%	86%	6%	3%	1%
P.S. 16 The Nancy DeBenedittis School	1%	89%	9%	2%	0%
P.S. 28 The Thomas Emanuel ECC	1%	87%	11%	2%	0%
P.S. 89 Elmhurst	0%	69%	27%	3%	1%
P.S. 110	0%	84%	13%	2%	1%
P.S. 211 Elm Tree Elementary School	-	-	-	-	-

(1) Current figures are based on the ethnicity of zoned kindergarten students from the 2016-2017 Audited Register. Figures do not necessarily represent the demographics of the school.



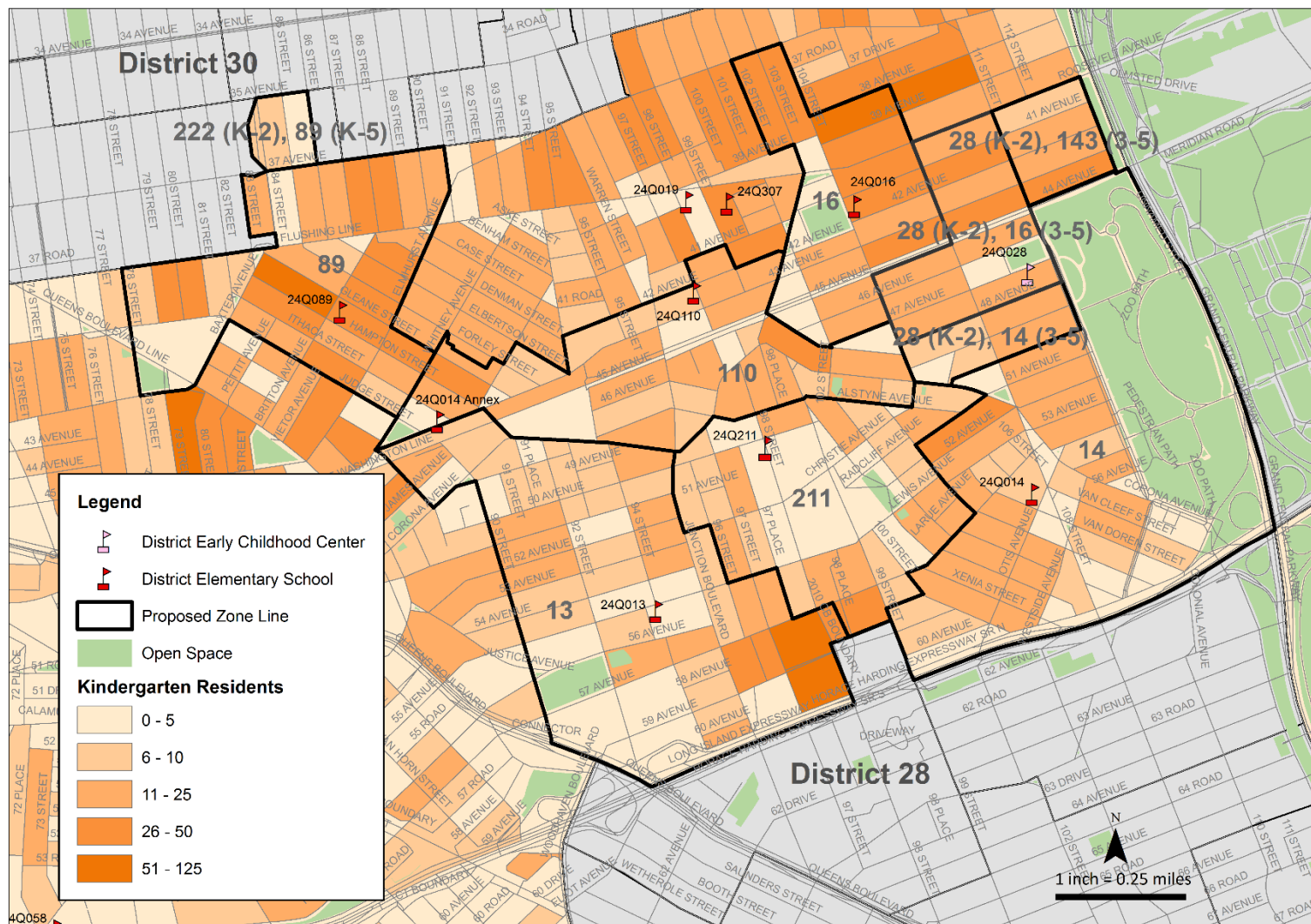
## Appendix F.2: Zone Demographic Changes – Ethnicity

Zone Demographics – Projected Ethnicity<sup>1</sup>

School Name	Black	Hispanic	Asian	White	Other
P.S. 13 Clement C. Moore	5% - 15%	45% - 55%	30% - 40%	5% - 15%	0% - 10%
P.S. 14 Fairview	0% - 10%	85% - 95%	0% - 10%	0% - 10%	0% - 10%
P.S. 16 The Nancy DeBenedittis School	0% - 10%	85% - 95%	5% - 15%	0% - 10%	0% - 10%
P.S. 28 The Thomas Emanuel ECC	0% - 10%	80% - 90%	5% - 15%	0% - 10%	0% - 10%
P.S. 89 Elmhurst	0% - 10%	65% - 75%	20% - 30%	0% - 10%	0% - 10%
P.S. 110	0% - 10%	75% - 85%	15% - 25%	0% - 10%	0% - 10%
P.S. 211 Elm Tree Elementary School	0% - 10%	70% - 80%	10% - 20%	0% - 10%	0% - 10%

(1) Projected figures are based on the ethnicity of zoned kindergarten students from the 2016-2017 Audited Register. Figures do not necessarily represent the projected demographics of the school.

# Appendix G: K Students (2010-16) by Census Block

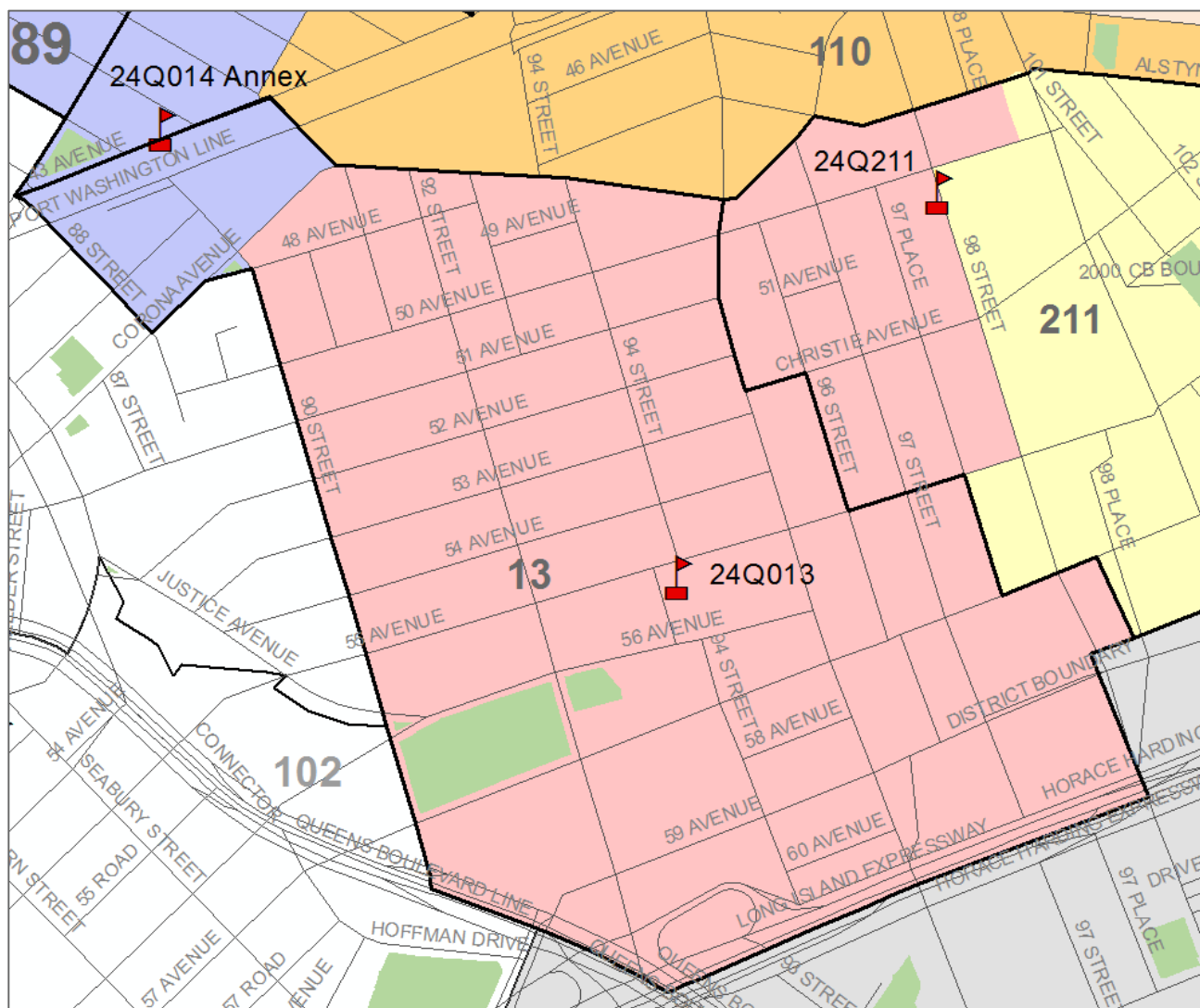


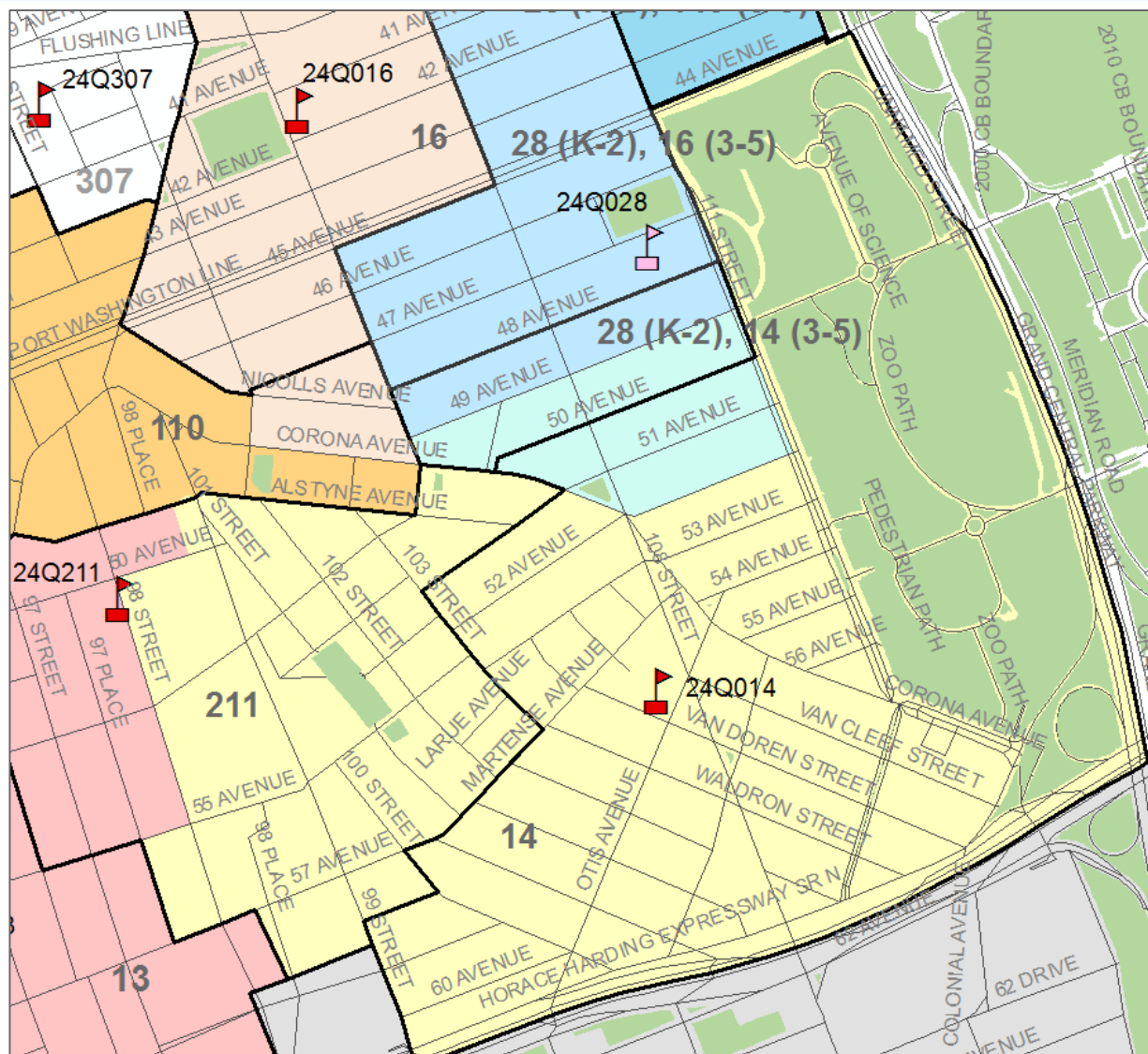
# Appendix H: Rezoning Engagement

Engagement with impacted community members were held on:

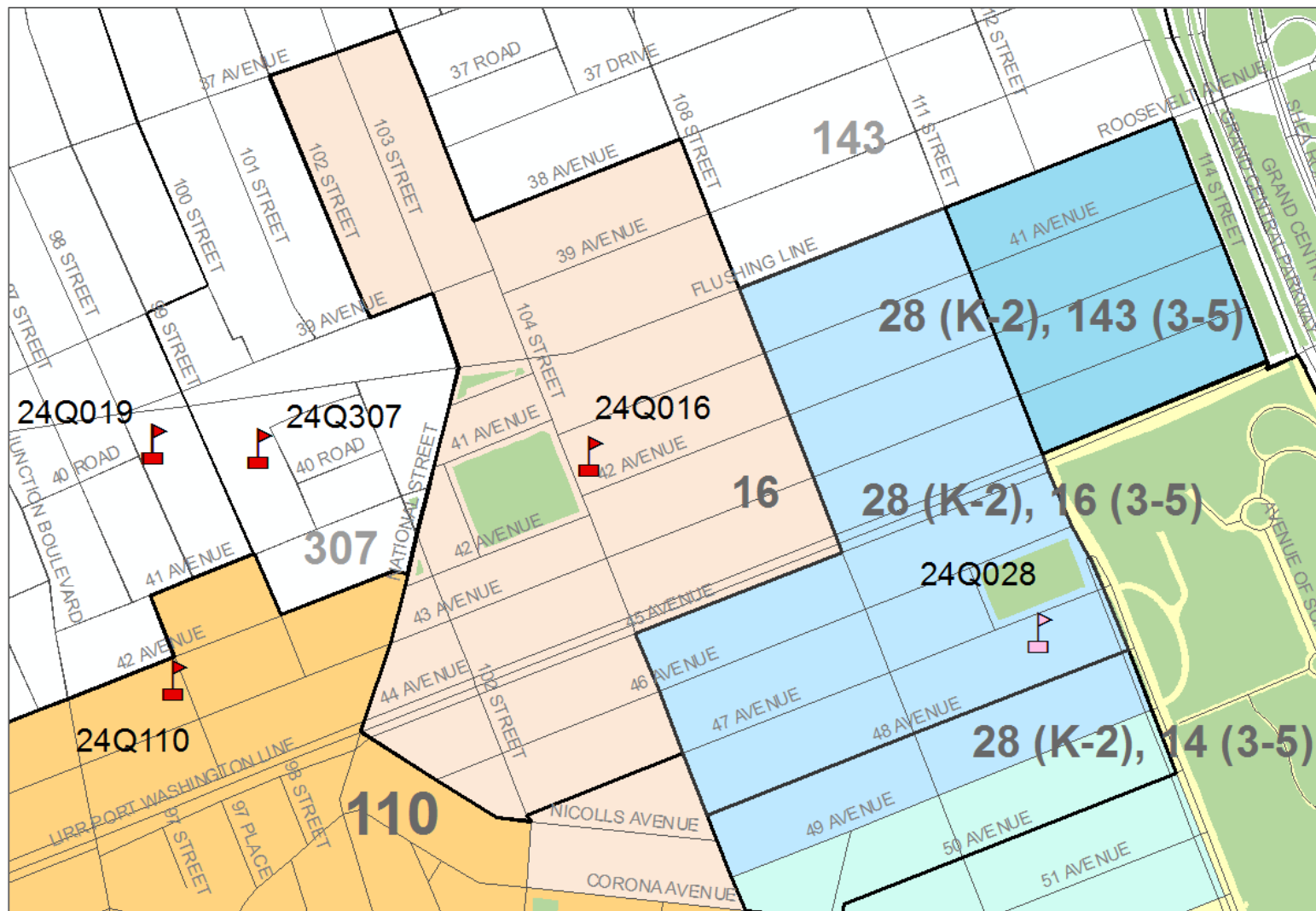
- **January 13, 2017:** ODP held a District Planning Call with agency stakeholders (OSE, SCA, Superintendent Chan, DECE) to discuss a potential need to zone P.S. 211 and impact nearby elementary schools through a rezoning.
- **March 16, 2017:** ODP met with all principals from potentially impacted schools to present an overview of the rezoning process, share the rationale for rezoning, to collect feedback and to inquire about desired impacts and reductions.
- **March 28, 2017:** ODP met with CEC 24 to discuss the potential need to rezone and to determine appropriate next steps and timeline.
- **May 16, 2017:** ODP presented an initial draft of the rezoning map to affected principals and collected feedback and answered questions about the rezoning process.
- **School Leadership Team (“SLTs”)** meetings: ODP presented information about the rezoning process, discussed timelines, collected feedback, and answered questions: **P.S. 89** (March 28, 2017), **P.S. 13** (April 20, 2017), **P.S. 14** (April 27, 2017), **P.S. 110** (May 11, 2017), **P.S. 16** (May 15, 2017), **P.S. 28** (May 18, 2017).
- **May 23, 2017:** ODP will conduct its formal presentation on the proposed zoning changes to District 24 CEC at a public meeting.
- **June 20, 2017:** District 24 CEC will hold a vote to approve zoning changes.

# Appendix I.1: Proposed Zone Lines: P.S. 13

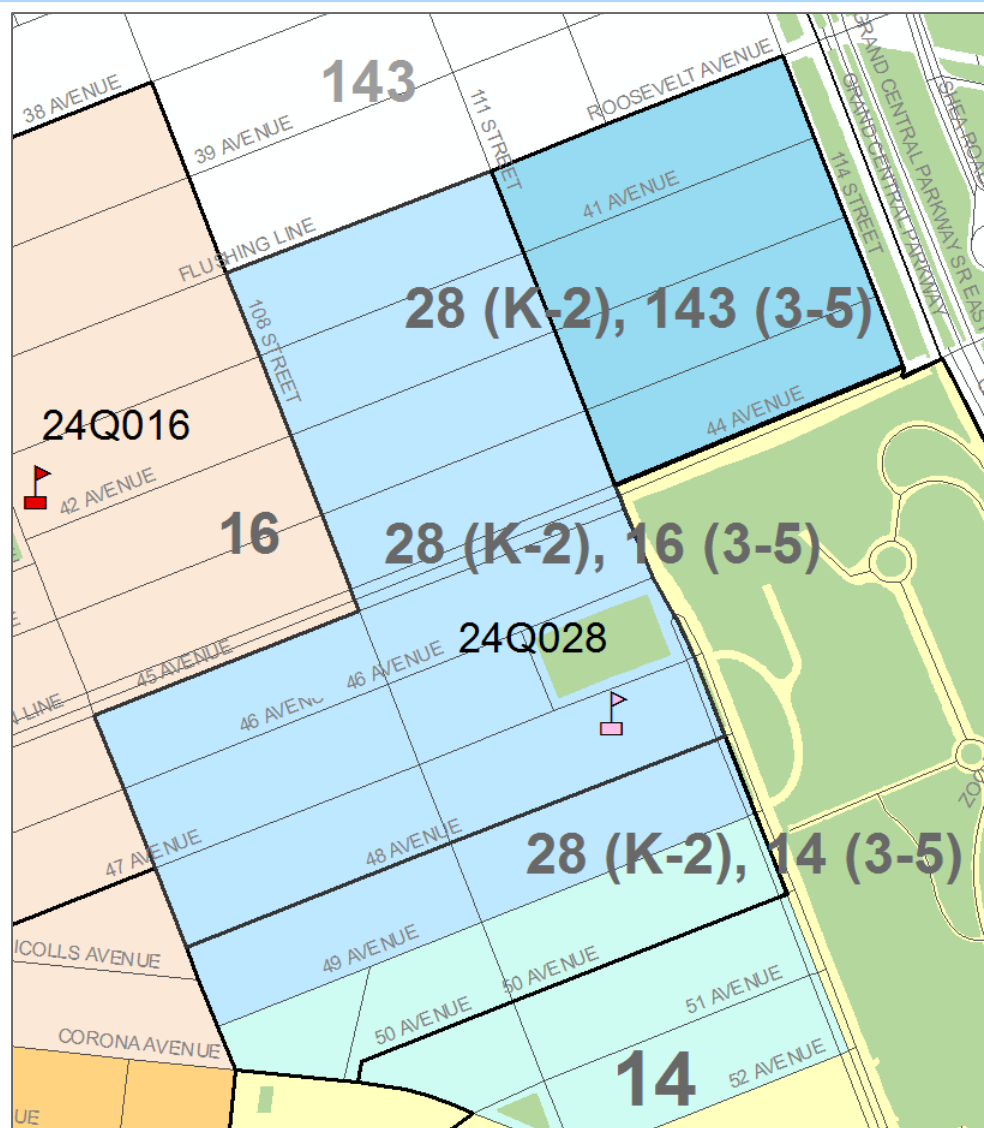


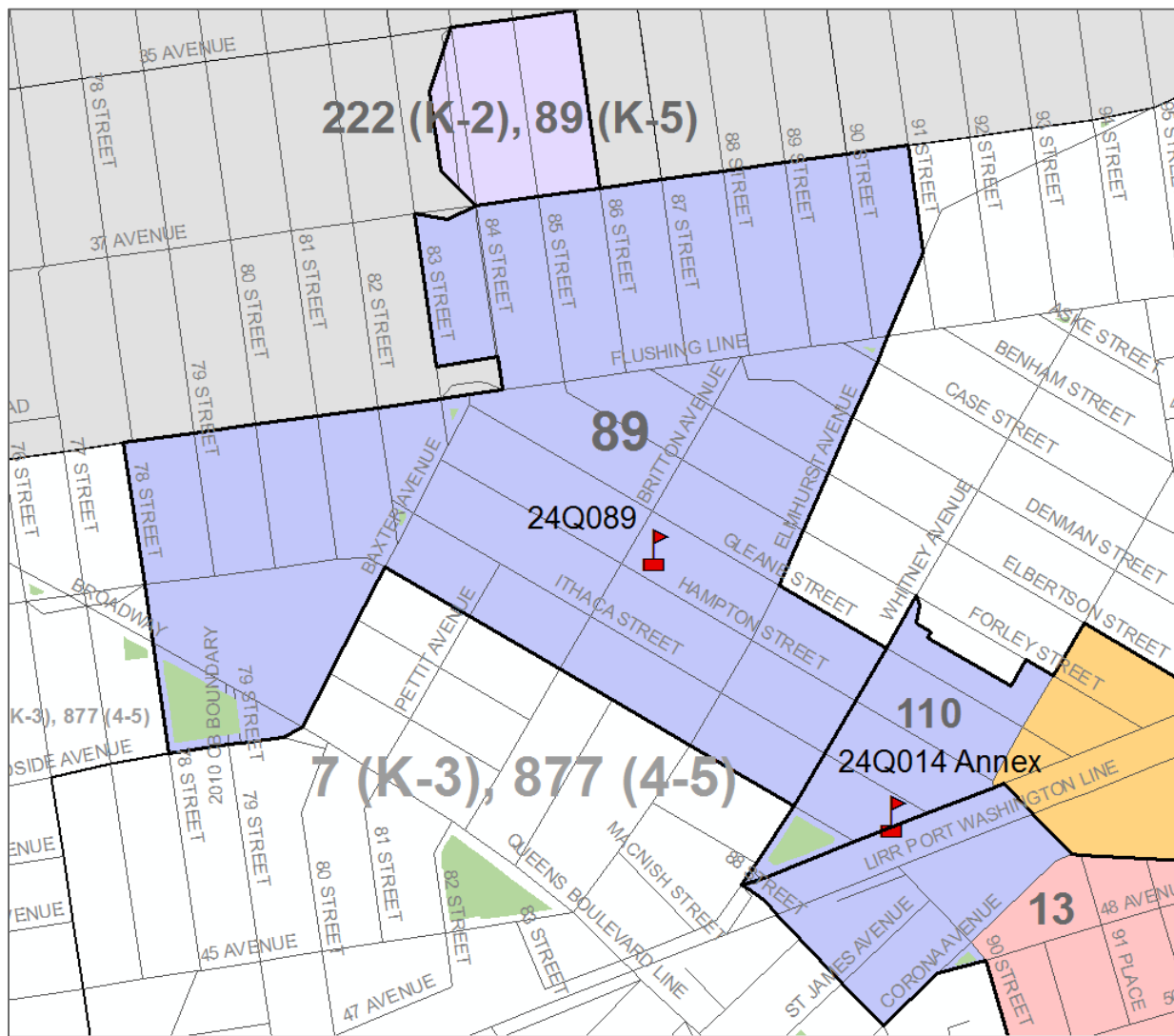




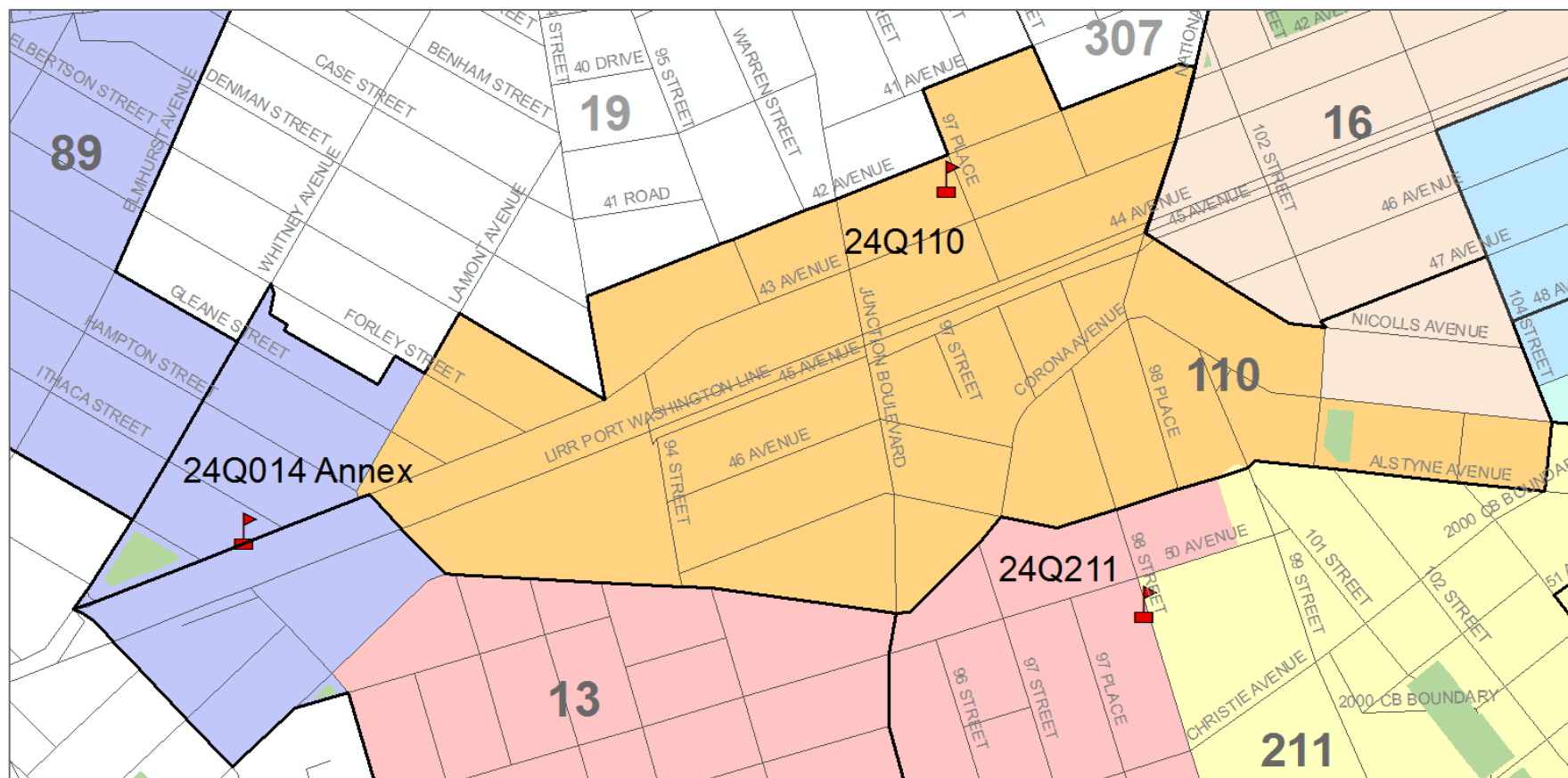


## Appendix I.4: Proposed Zone Lines: P.S. 28









# Appendix I.7: Proposed Zone Lines: P.S. 211

