



# Presentation to CEC 24: Proposed Middle School Rezoning

*Office of District Planning*

May 25, 2021

# Agenda

- Introduction and New Capacity
- Rezoning Process Review
- Proposed Rezoning Scenario and Impacts
- Discussion and Next Steps
- Contact Information
- Appendix

# Introduction

# New Building Q419

- New building Q419 is located at 111-10 Astoria Boulevard, in the current 24Q311 middle school zone
- Q419 is now scheduled to open for the 2022-2023 school year
- The building has a capacity of approximately 646 seats, 96 of which are for District 75 students, and is planned to house a new district middle school



# Goals

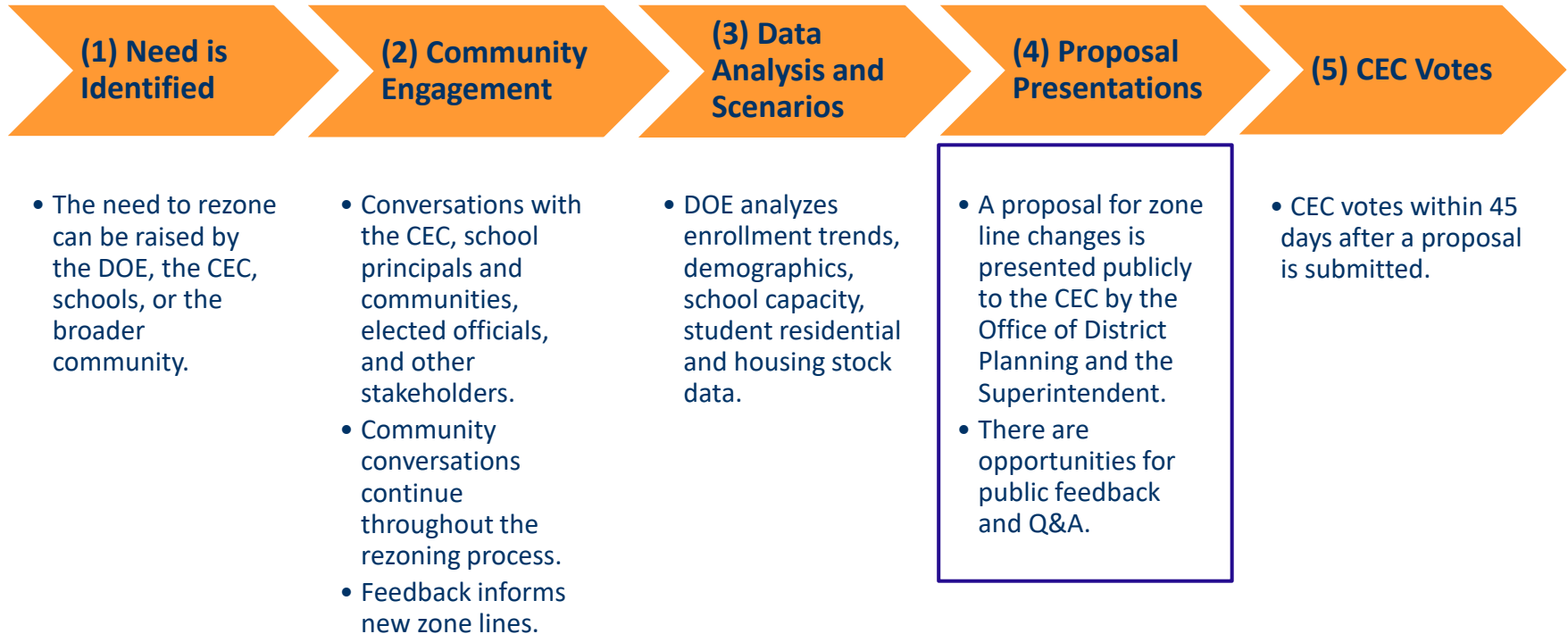
- Review shared understanding of the rezoning process
- Discuss proposed zone line changes for middle schools in District 24, related to the opening of new school building Q419 for the 2022-2023 school year
- Questions to consider as we present:
  - How can rezoning promote equity and excellence in District 24?
  - How can rezoning further diversify and integrate District 24 schools?
  - Does the scenario make sense in terms of geography and impact to student travel?
  - Do the projected enrollment and utilization rates align to school needs?

# Rezoning Process

# What is a Rezoning?

- A zoned school is a school where priority to attend is based on residence within a defined geographical area, known as a zone
- Rezoning is a collaborative process where the geographic areas of zones are changed and/or new zones are created, as governed by Chancellor's Regulation A-185
- The Office of District Planning (ODP) works in partnership with the Superintendent, Community Education Council (CEC), school communities, and other stakeholders to develop rezoning plans
- The Superintendent ultimately submits a rezoning proposal to the CEC who votes on the plan within 45 days

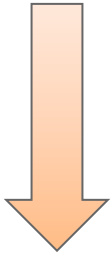
# Rezoning Process



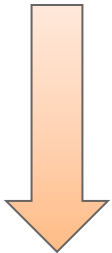


# Timeline

May 2021



June 2021



September  
2022

## Rezoning Proposal Next Steps

**May 19:** Presentation of draft map to the CEC 24 Rezoning Committee (completed)

**May 25:** Rezoning presentation to CEC 24 and community

**June 1:** Joint SLT meeting with impacted schools to gather further feedback

**June 15:** Potential CEC vote on rezoning, pending proposal submission

**Sept 2022:** Rezoning plan in effect, if the rezoning proposal is submitted and approved

# Rezoning Policies and Impacts

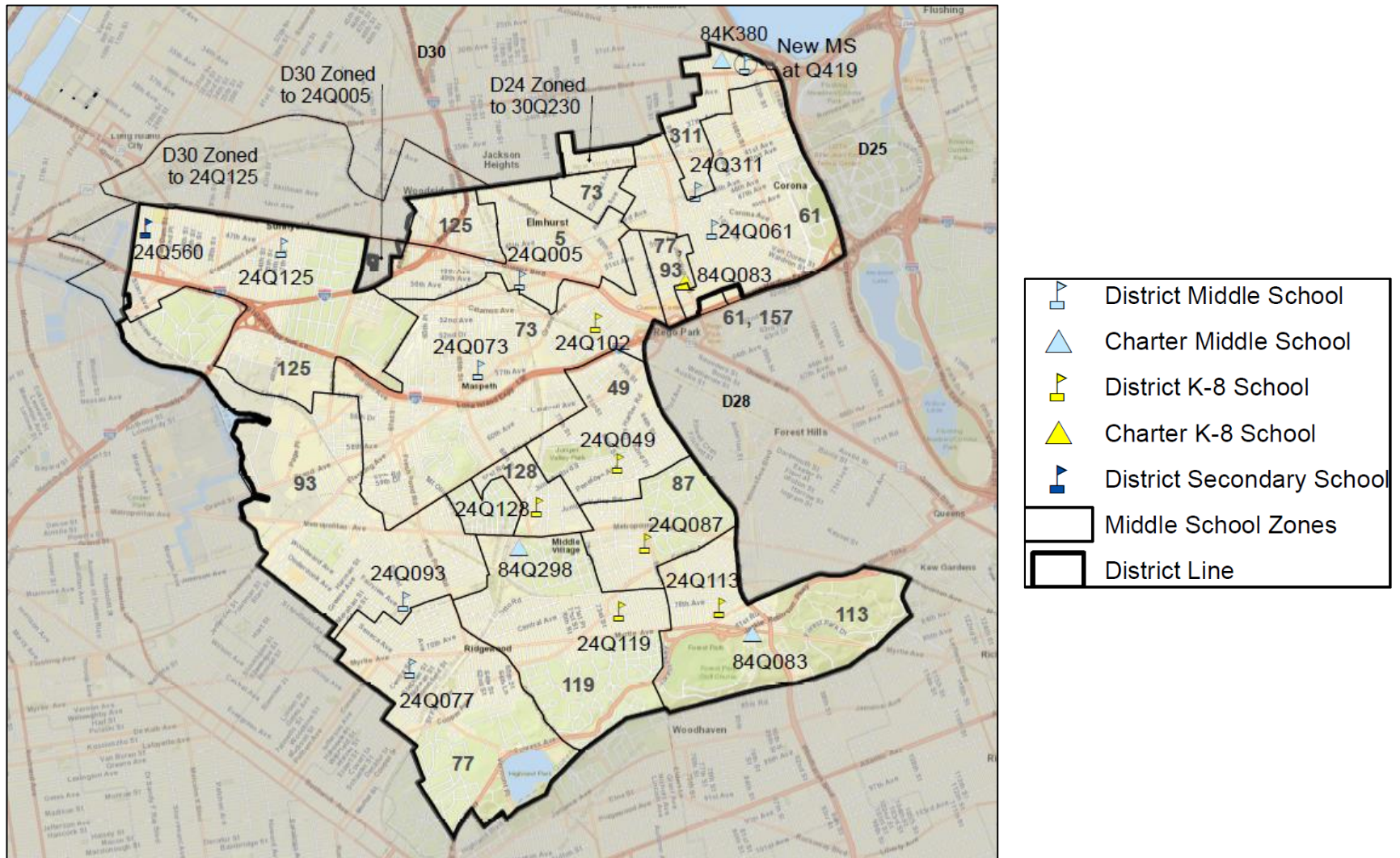
- **When would a rezoning be implemented?**
  - Pending submission of a rezoning proposal for approval by the CEC in 2021, proposed changes would take effect for the 2022-2023 academic year
- **Which students would be impacted by a rezoning?**
  - Proposed changes would primarily impact incoming sixth grade students, as well as new students to the system in 2022-2023
  - There is no impact to students currently enrolled at a school
- **Which students would not be impacted by a rezoning?**
  - Currently enrolled students

# How does the DOE develop proposed zone lines?

- In order to draw new zone lines, the DOE:
  - Determines the appropriate number of students that should live in each zone (“target zone size”) based on space and historic demand trends
  - Projects future students residing in both existing housing and upcoming new residential construction
  - Draws new zones that:
    - Are projected to contain the target zone size for each school
    - Take into account geographic barriers and travel distance
    - Keep schools geographically within the zone boundaries
    - Honor the specific needs, diversity, and context of Corona/Elmhurst

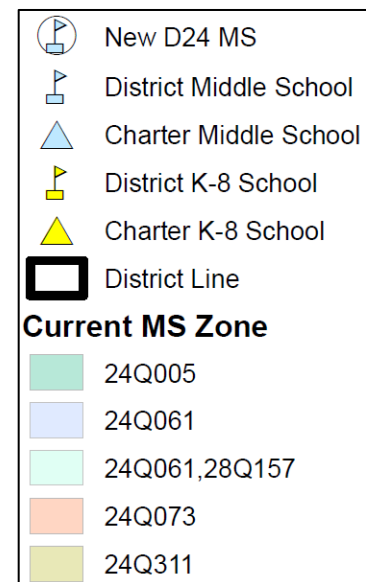
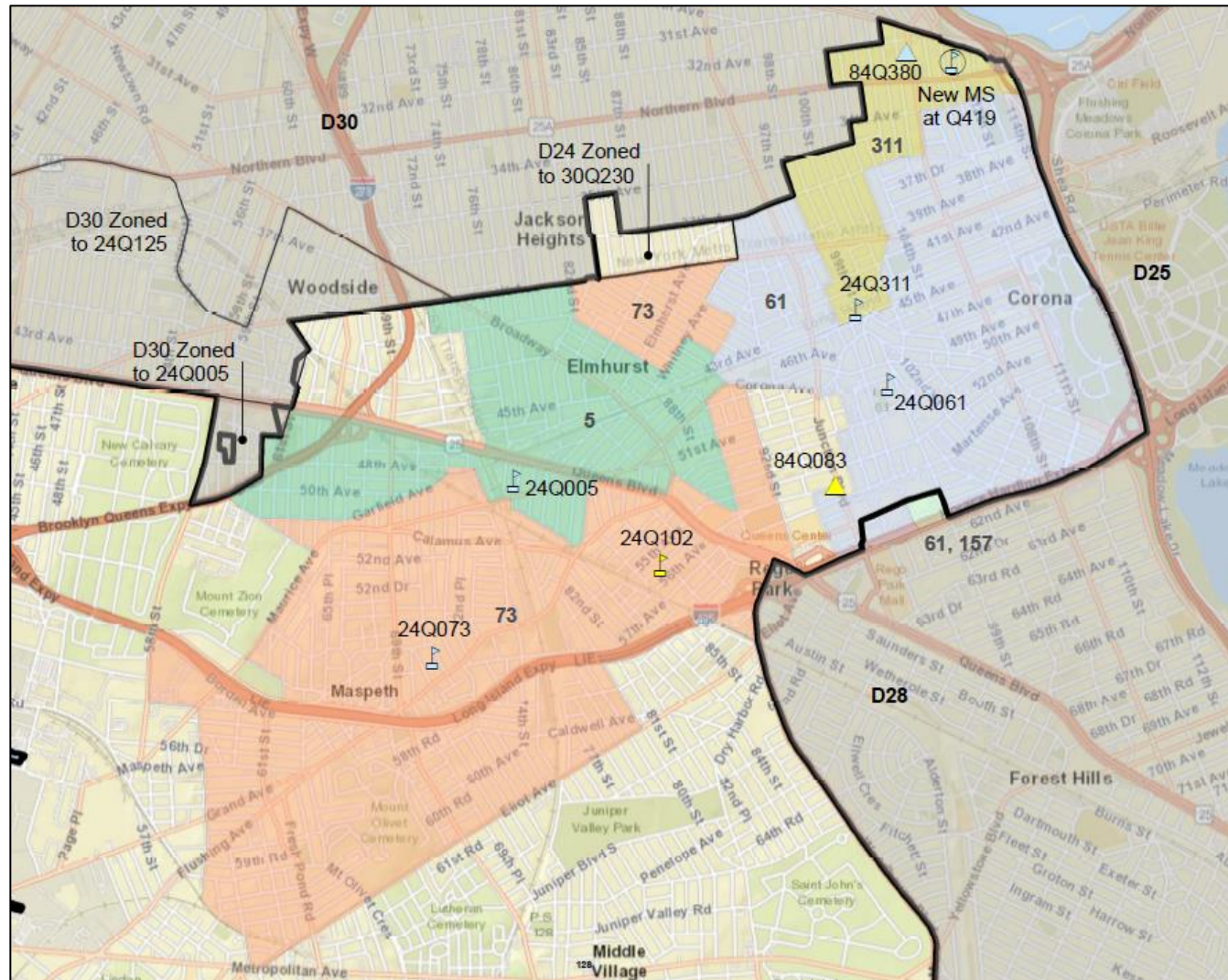
# Proposed Rezoning Scenario and Impact

# Current District 24 Middle School Zones





# Area Impacted by Proposed Rezoning: Current Zone Map



# Current Capacity and Utilization Rates

- The below chart shows current enrollment, capacity, and utilization information for schools included in the proposed scenario

DBN	School Name	Current Total Enrollment <sup>1</sup>	Org Capacity <sup>2</sup>	Org Utilization <sup>3</sup>	Capped in Past 3 Years <sup>4</sup>
24Q005	I.S. 5 - The Walter Crowley Intermediate School	1,746	1,580	111%	Y
24Q061	I.S. 061 Leonardo Da Vinci	2,233	2,163	103%	Y
24Q073	I.S. 73 - The Frank Sansivieri Intermediate School	2,005	1,999	100%	N
24Q311	Corona Arts & Sciences Academy	756	814	93%	Y

1. Based on three-year weighted average of 2018-19, 2019-20, and 2020-21.

2. Based on 2019-2020 Blue Book

3. Based on 2019-2020 Blue Book for capacity and three-year weighted average of 2018-19, 2019-20, and 2020-21 for enrollment

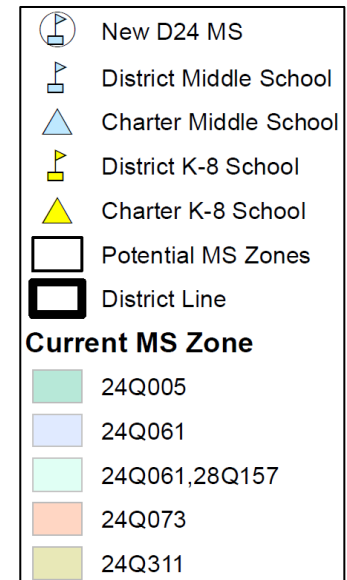
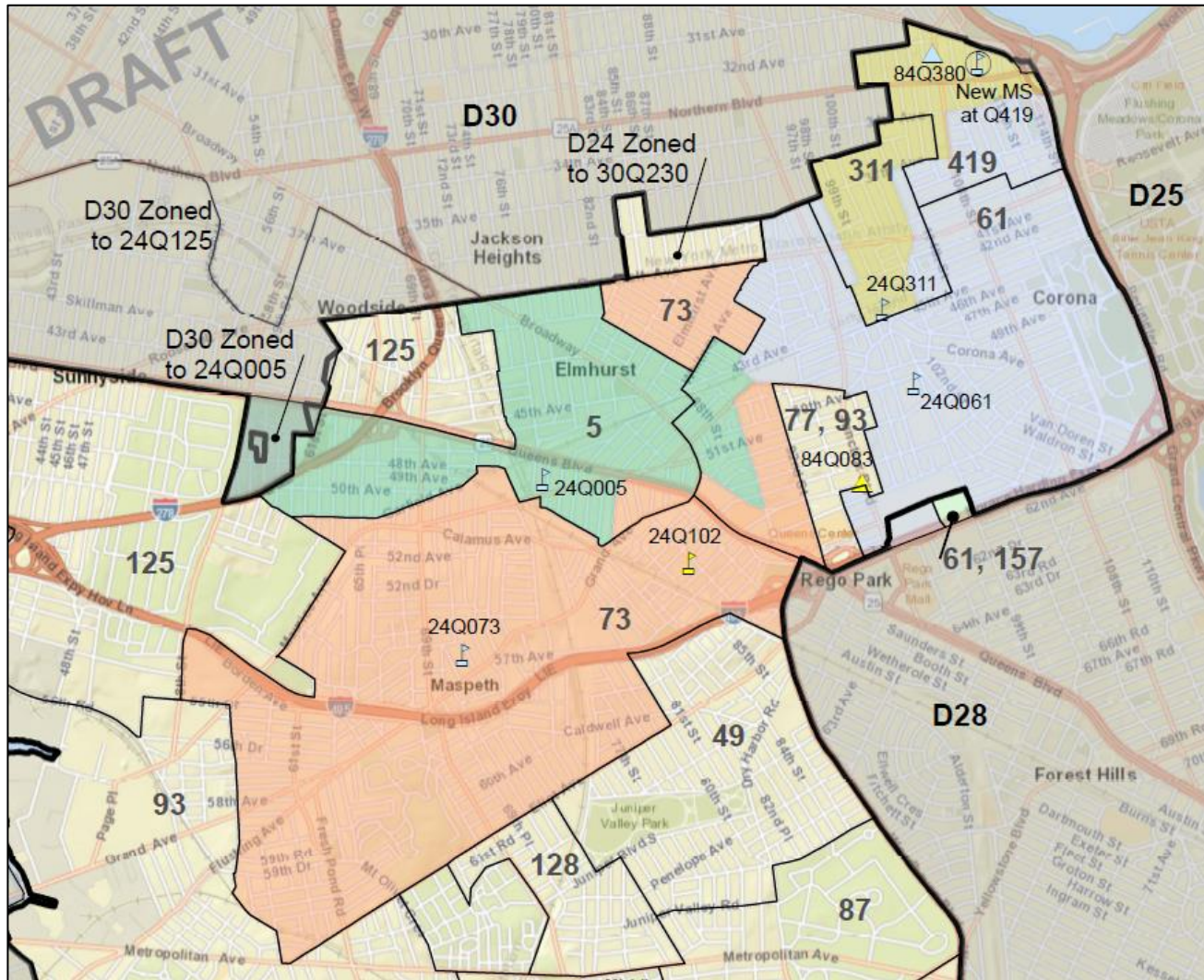
4. Based on 2017-2019 data from the Borough Field Office

# Interpreting the Proposed Maps

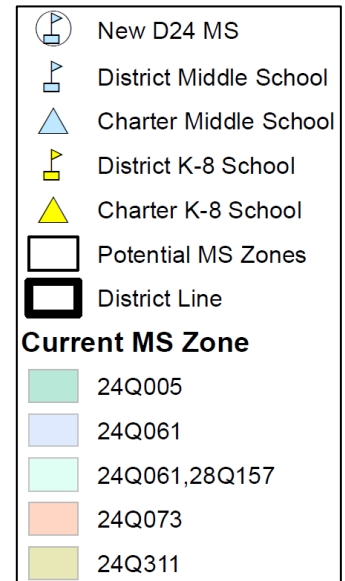
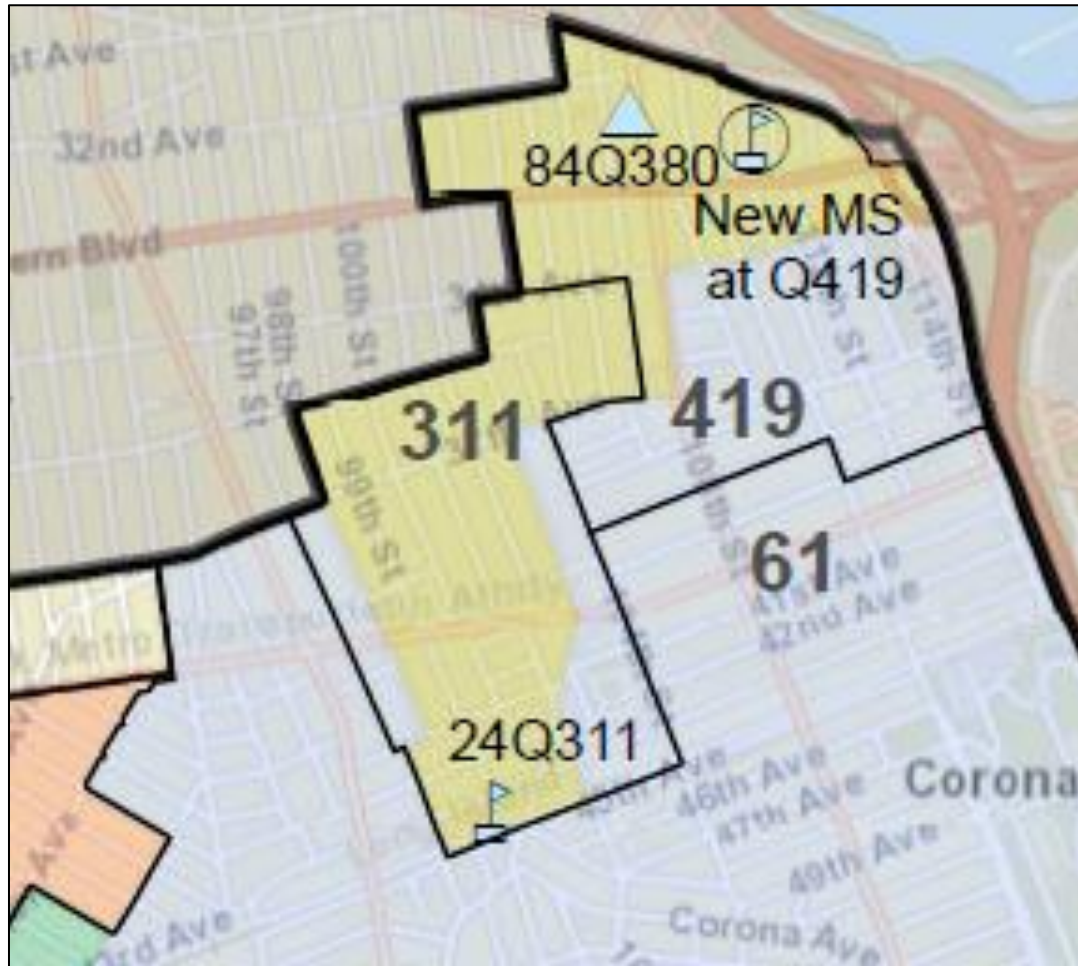
- The **colors** represent existing zones
- The **thick black** lines represent proposed zone lines
- The **green** represents open space
- Proposed zone lines go down the middle of the street
- The number of students who live in a zone does not correlate to how large a zone is geographically
- Every city block is accounted for on the maps and in school zones, not just residential areas



# Proposed Middle School Zones

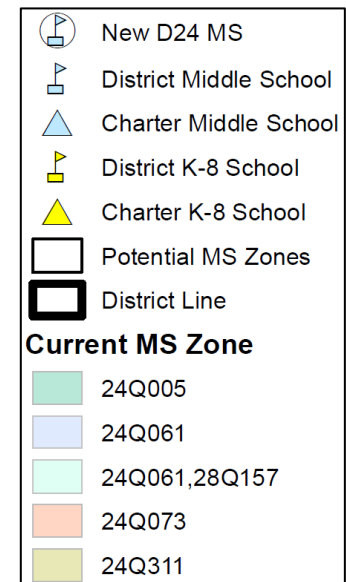
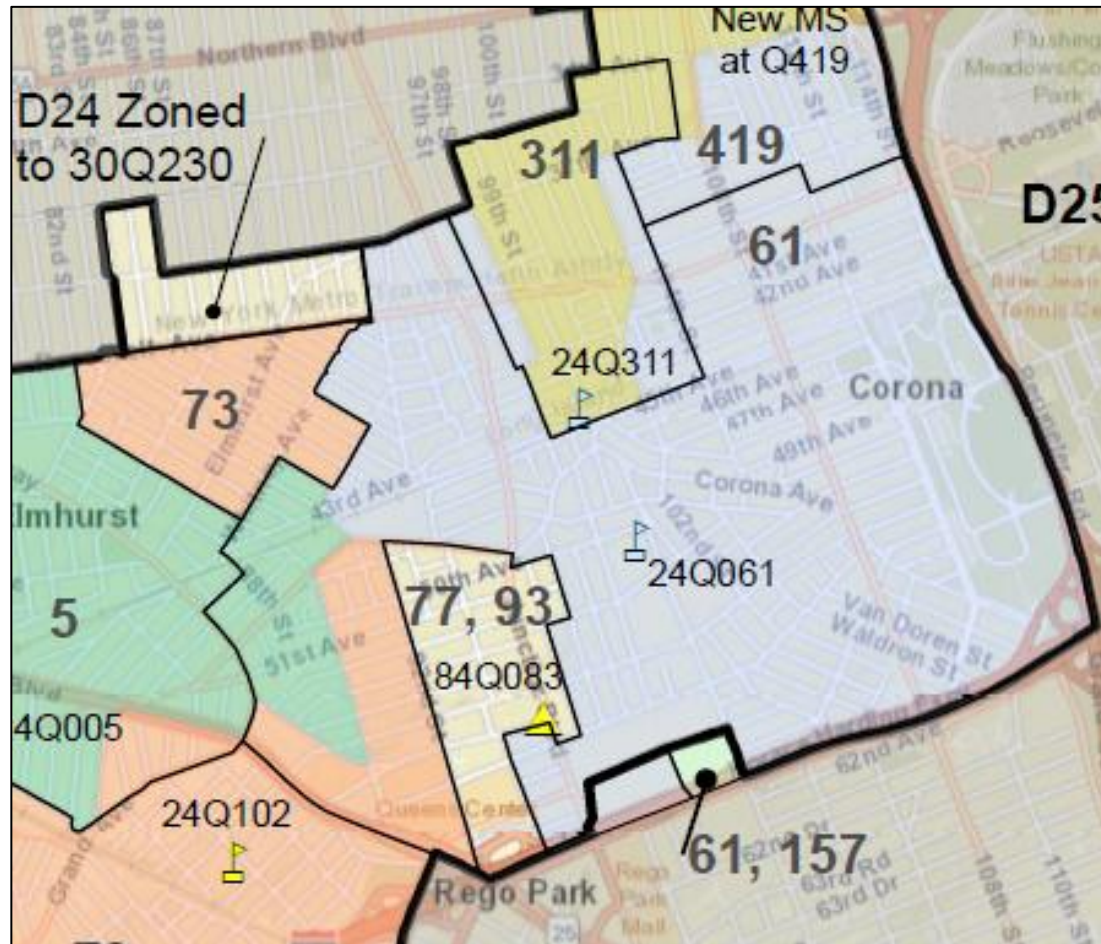


# Proposed Middle School Zones - New MS Zone / Q311 Zone detail

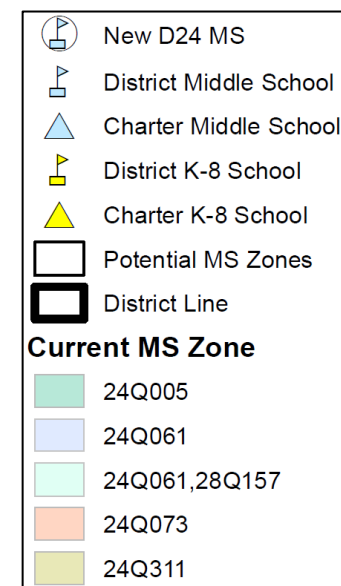
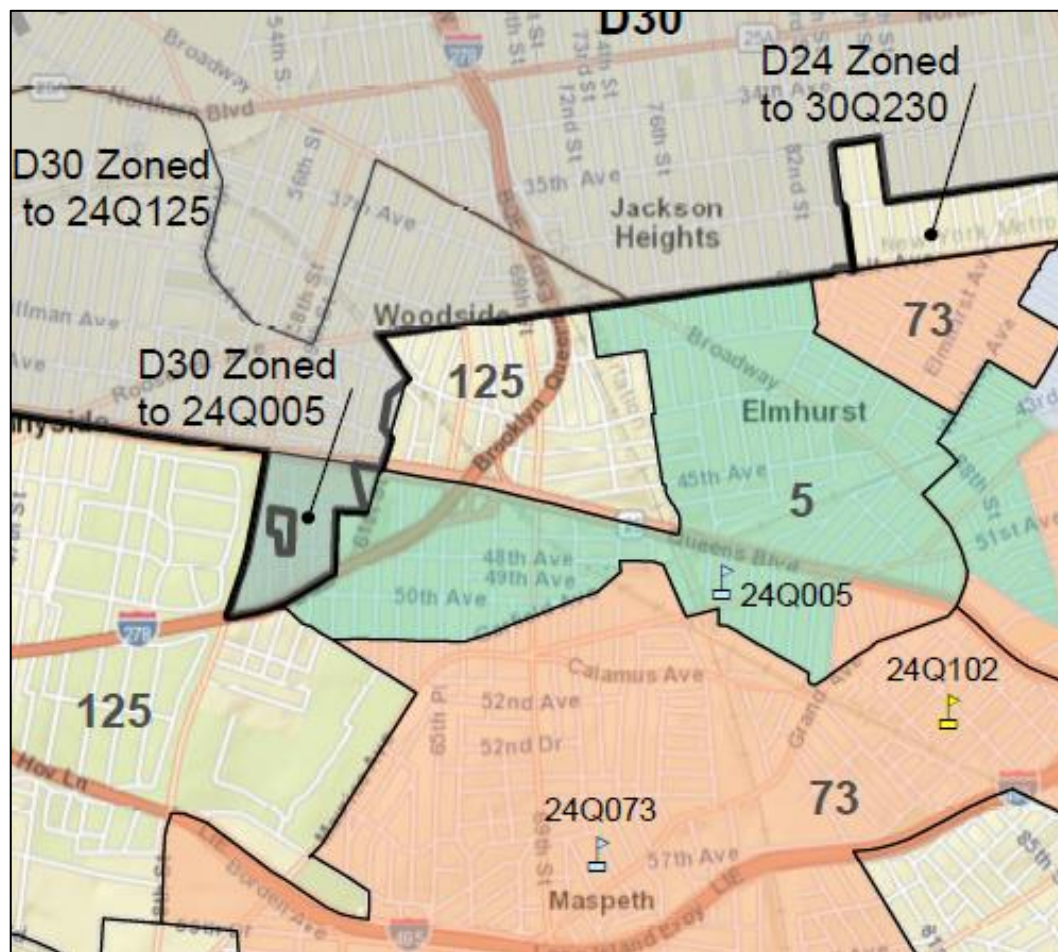




# Proposed Middle School Zones - Q061 Zone detail

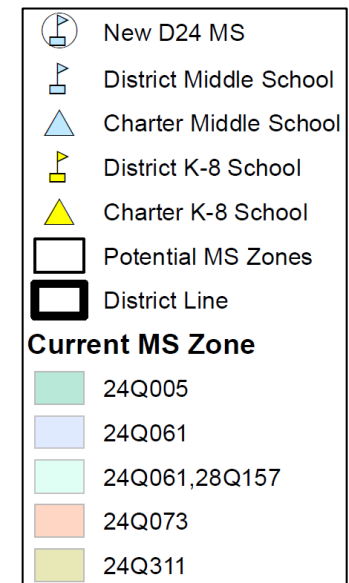
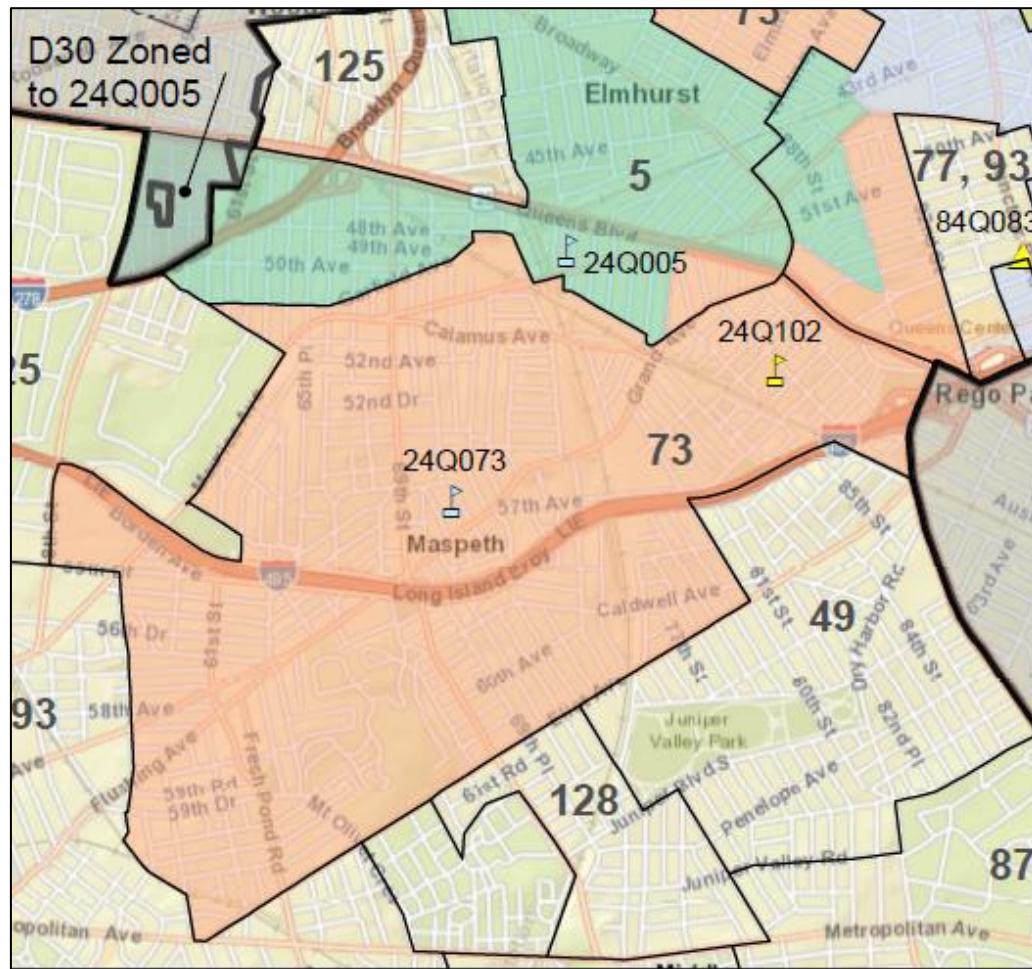


# Proposed Middle School Zones - Q005 Zone detail

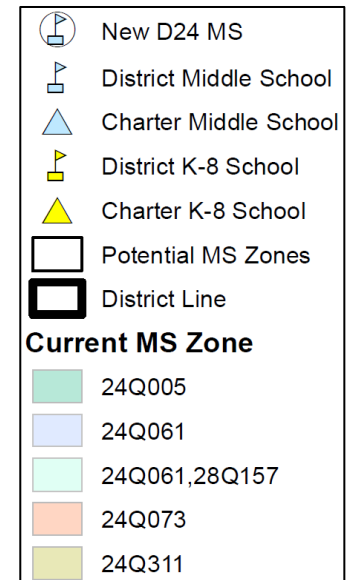
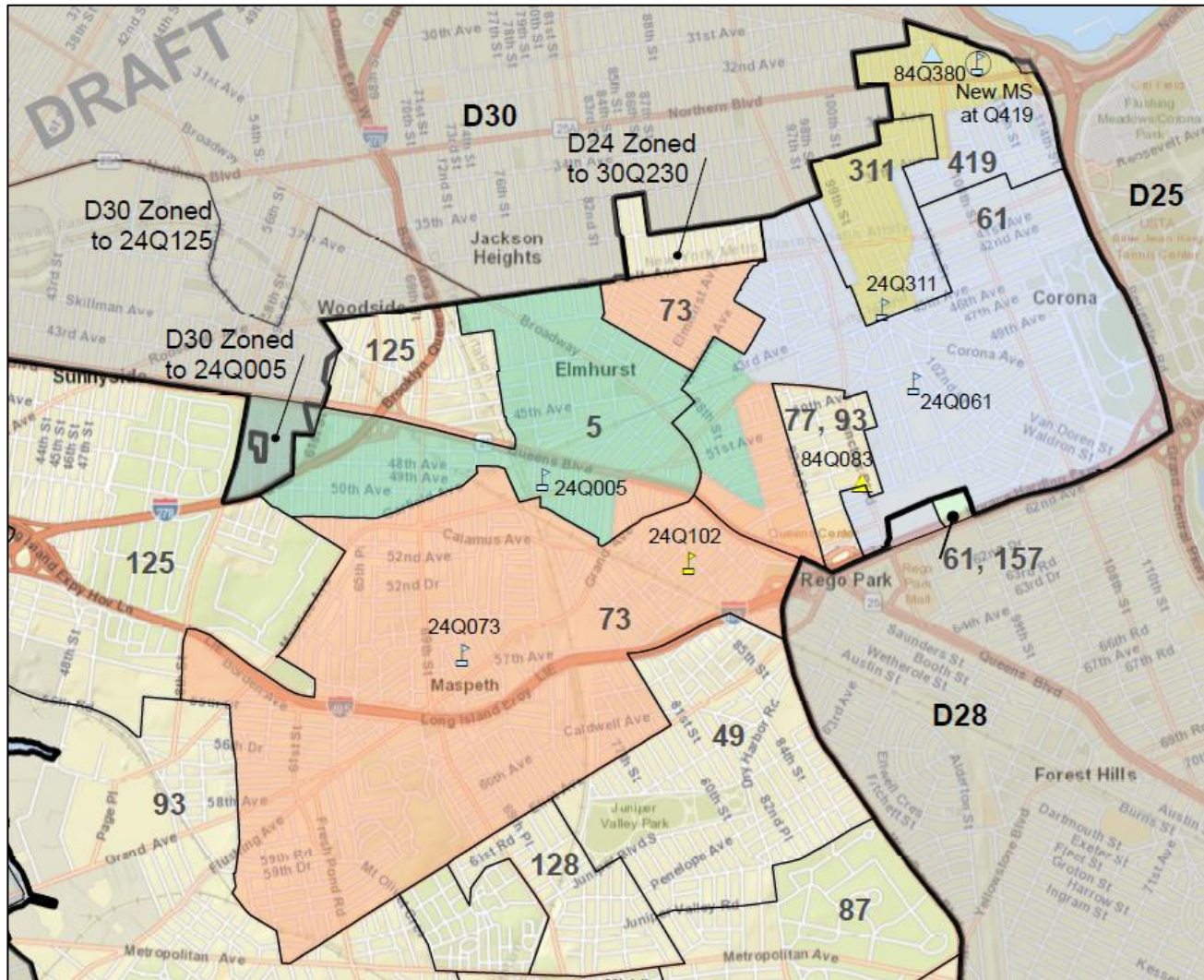




# Proposed Middle School Zones - Q073 Main Zone detail



# Proposed Middle School Zones



# Projected Capacity & Utilization Rates

- The below chart shows projected enrollment and utilization information for the schools included in the proposed scenario

DBN	School Name	Projected Total Enrollment	Projected Org Utilization	Change
24Q005	I.S. 5 - The Walter Crowley Intermediate School	1,550-1,580	95-100%	Decrease
24Q061	I.S. 061 Leonardo Da Vinci	1,983-2,013	90-95%	Decrease
24Q073	I.S. 73 - The Frank Sansivieri Intermediate School	1,826-1,856	90-95%	Decrease
24Q311	Corona Arts & Sciences Academy	705-735	87-92%	No Change
24QTBD	New M.S. @ Q419	513-543	93-99%	New School

# Discussion and Next Steps



# Discussion

- Some guiding questions to consider as we discuss further:
  - What feedback do you have on the proposed zone lines presented?
  - How does this rezoning scenario promote equity and excellence in District 24?
  - Does the scenario make sense in terms of geography and impact to student travel?
  - Do the projected enrollment and utilization rates align to school needs?

# Next Steps

- Tonight is an opportunity to provide feedback on the proposed map and plan.
- There will be opportunities for continued discussions with school communities, CEC 24, principals, SLTs, and other stakeholders.
- The NYCDOE will use feedback from the community to inform continued development of the proposed zone lines and plans to share any changes in the coming weeks
- We are aiming to present a formal rezoning proposal June 15 for CEC 24 to vote on for 2022-2023 school year implementation, pending further meetings and discussion.

# Contact Information

Madelene Chan, District 24 Community Superintendent

[MChan2@schools.nyc.gov](mailto:MChan2@schools.nyc.gov)

Jai Griem, District Planning

[JGriem@schools.nyc.gov](mailto:JGriem@schools.nyc.gov)

Community Education Council 24

[CEC24@schools.nyc.gov](mailto:CEC24@schools.nyc.gov)

Office of District Planning

[QueensZoning@schools.nyc.gov](mailto:QueensZoning@schools.nyc.gov)

# Appendix

# Appendix A: Current and Projected Sixth Grade Enrollment

DBN	School Name	Current Sixth Grade Enrollment <sup>1</sup>	Projected Sixth Grade Enrollment <sup>2</sup>
24Q005	I.S. 5 - The Walter Crowley Intermediate School	572	490-500
24Q061	I.S. 061 Leonardo Da Vinci	719	585-595
24Q073	I.S. 73 - The Frank Sansivieri Intermediate School	575	555-565
24Q311	Corona Arts & Sciences Academy	227	215-225
24QTBD	New M.S. @ Q419	N/A	165-175

1. Current enrollment based three-year weighted average of 2018-19, 2019-20, and 2020-21.

# Appendix B1: Current Middle School Section Counts

DBN	School Name	Sections per Grade <sup>1</sup>	Self-Contained <sup>1</sup>
24Q005	I.S. 5 - The Walter Crowley Intermediate School	19-20	11
24Q061	I.S. 061 Leonardo Da Vinci	23	22
24Q073	I.S. 73 - The Frank Sansivieri Intermediate School	19-25	13
24Q311	Corona Arts & Sciences Academy	6-10	5

1. Section counts based on 2019-20.

## Appendix B2: Projected Middle School Section Counts

DBN	School Name	Projected Sections per Grade <sup>1</sup>	Projected Self-Contained
24Q005	I.S. 5 - The Walter Crowley Intermediate School	18	10
24Q061	I.S. 061 Leonardo Da Vinci	21	19
24Q073	I.S. 73 - The Frank Sansivieri Intermediate School	18-21	13
24Q311	Corona Arts & Sciences Academy	8	5
24QTBD	New M.S. @ Q419	6	4

1. Projected when rezoning is at scale.

# Appendix C: Average Class Sizes

DBN	School Name	Current Grades 6-8 <sup>1</sup>	Projected Grades 6-8 <sup>2</sup>
24Q005	I.S. 5 - The Walter Crowley Intermediate School	29	27-29
24Q061	I.S. 061 Leonardo Da Vinci	29	27-29
24Q073	I.S. 73 - The Frank Sansivieri Intermediate School	28	27-29
24Q311	Corona Arts & Sciences Academy	29	27-29
24QTBD	New M.S. @ Q419	N/A	26-28

1. Current class sizes based 2019-2020
2. Projected class sizes when rezoning is at scale



# Appendix D1: Current Sixth Grade Zone Demand

DBN	School Name	Current Zone Retention <sup>1</sup>	Current Zone Enrollment <sup>2</sup>
24Q005	I.S. 5 - The Walter Crowley Intermediate School	73%	70%
24Q061	I.S. 061 Leonardo Da Vinci	51%	98%
24Q073	I.S. 73 - The Frank Sansivieri Intermediate School	42%	61%
24Q311	Corona Arts & Sciences Academy	55%	97%

1. Zone retention based on a three-year weighted average of 2018-19, 2019-20, and 2020-21.

2. Zone enrollment based on a three-year weighted average of 2018-19, 2019-20, and 2020-21.

# Appendix D2: Projected Sixth Grade Zone Demand

DBN	School Name	Projected Zone Retention	Projected Zone Enrollment
24Q005	I.S. 5 - The Walter Crowley Intermediate School	70-80%	65-75%
24Q061	I.S. 061 Leonardo Da Vinci	45-55%	90-100%
24Q073	I.S. 73 - The Frank Sansivieri Intermediate School	45-55%	55-65%
24Q311	Corona Arts & Sciences Academy	65-75%	90-100%
24Q419	New M.S. @ Q419	55-65%	90-100%

1. Projected zone retention and zone enrollment when rezoning is at scale

# Appendix E: Sixth Grade Zone Sizes

DBN	School Name	Current Sixth Grade Zone Size <sup>1</sup>	Projected Sixth Grade Zone Size <sup>2</sup>
24Q005	I.S. 5 - The Walter Crowley Intermediate School	548	490-510
24Q061	I.S. 061 Leonardo Da Vinci	1,378	1,260-1,280
24Q073	I.S. 73 - The Frank Sansivieri Intermediate School	840	755-775
24Q311	Corona Arts & Sciences Academy	402	320-340
24Q419	New M.S. @ Q419	N/A	300-320

1. Current zone size is based on a three-year weighted average of 2018-19, 2019-20, and 2020-21, and include shared zones.

2. Projected zone size when the rezoning is at scale.

# Appendix F1: Current Sixth Grade (Zone) Demographics - Ethnicity<sup>1</sup>

DBN	School Name	Asian	Black	Hispanic	White	Other
24Q005	I.S. 5 - The Walter Crowley Intermediate School	51%	3%	42%	3%	1%
24Q061	I.S. 061 Leonardo Da Vinci	8%	4%	86%	2%	-
24Q073	I.S. 73 - The Frank Sansivieri Intermediate School	34%	1%	47%	17%	1%
24Q311	Corona Arts & Sciences Academy	2%	2%	95%	1%	-

1. Current enrollment based three-year weighted average of 2018-19, 2019-20, and 2020-21.

## Appendix F2: Projected Sixth Grade (Zone) Demographics - Ethnicity<sup>1</sup>

DBN	School Name	Asian	Black	Hispanic	White	Other
24Q005	I.S. 5 - The Walter Crowley Intermediate School	45-55%	0-10%	35-45%	0-10%	0-10%
24Q061	I.S. 061 Leonardo Da Vinci	10-20%	0-10%	75-85%	0-10%	0-10%
24Q073	I.S. 73 - The Frank Sansivieri Intermediate School	25-35%	0-10%	45-55%	15-25%	0-10%
24Q311	Corona Arts & Sciences Academy	0-10%	0-10%	88-98%	0-10%	0-10%
24Q419	New M.S. @ Q419	0-10%	0-10%	88-98%	0-10%	0-10%

# Appendix G1: Current Sixth Grade (Zone) Demographics - % Poverty<sup>1</sup>

DBN	School Name	Current % (Zone) <sup>1</sup>	Projected% (Zone) <sup>2</sup>
24Q005	I.S. 5 - The Walter Crowley Intermediate School	76%	70-80%
24Q061	I.S. 061 Leonardo Da Vinci	90%	85-95%
24Q073	I.S. 73 - The Frank Sansivieri Intermediate School	70%	65-75%
24Q311	Corona Arts & Sciences Academy	95%	90-100%
24QTBD	New M.S. @ Q419	N/A	90-100%

1. Students who are economically disadvantaged are FRL income-eligible; current % are based on a three-year weighted average of 2018-19, 2019-20, and 2020-21.