



Office of District Planning

*Rezoning Presentation to
CEC 26*



**Department of
Education**

Carmen Fariña, Chancellor

April 20, 2016

New Building Q332

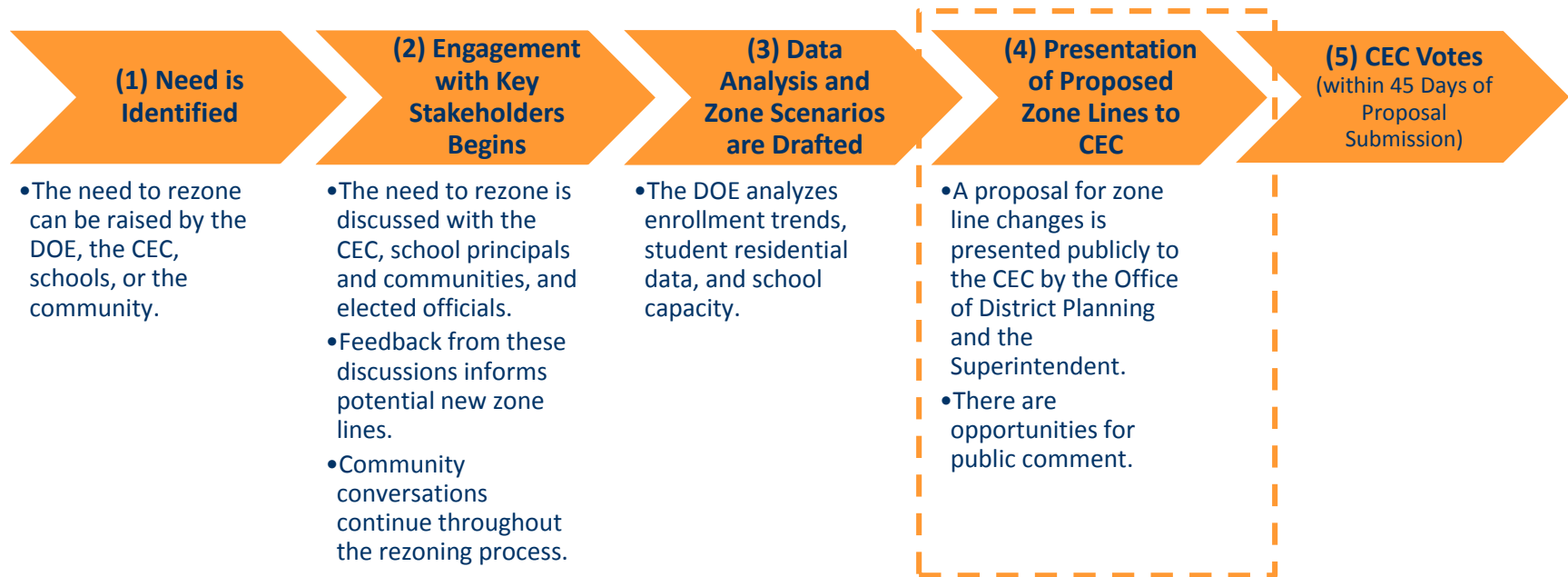


Rationale for Rezoning

- Create a zone for the new elementary school at new building Q332, coming online in 2017 and located at 210-07 48th Avenue
- Help reduce overcrowding at elementary schools in the Bayside and Auburndale neighborhoods
- Plan for the admissions at the new school



Overview of Rezoning Process & Timeline



Timeline for 2017 Implementation



Guiding Policies and Principles

- Year of implementation
- Impact on current students
- Sibling grandfathering
- Admissions processes
- Transportation/Busing



Methodology – Determining the Target K Zone Size

Seat Supply: What is the capacity of each school?

Specifically, how many instructional sections (i.e. classes) and how many students can each building accommodate?

The DOE assesses capacity based on:

- Full-size classrooms available in the building
- Cluster rooms and administrative space a school is entitled to per the Citywide Instructional Footprint
- Historical enrollment increases and decreases at each grade level



Methodology – Determining the Target K Zone Size

Seat Demand: How many students do we anticipate?

We assess demand – both from inside and outside the zone – based on:

- The historical number of kindergarten students living in the zone;
- Historical kindergarten waitlists and capping activity;
- Historical average class sizes;
- Historical zone retention rates (the percent of students who live in the zone and attend their zoned school);
- Historical zone enrollment rates (the percent of enrolled students who are also zoned to that school); and
- Anticipated kindergarten growth, based on current/future housing developments.



Methodology – Determining the Zone Lines

- Contains appropriate number of residents for a school's size, based on recent public school enrollment trends
- Factors we take into consideration:
 - New residential construction
 - Diversity
 - Geographic barriers
 - Travel distance



Schools Affected by Rezoning

In the current school year (2015-2016):

DBN	School Name	Grade Span	Total Enrollment ¹	Total Org Capacity ²	Utilization %
26Q031	P.S. 031 Bayside	K-5*	544	391	139%
26Q041	P.S. 041 Crocheron	K-5	521	295	177%
26Q159	P.S. 159	K-5*	659	534	123%
26Q162	P.S. 162 John Golden	K-5	688	423	163%
26Q203	P.S. 203 Oakland Gardens	K-5*	924	609	152%

* School includes a Pre-Kindergarten program



**Department of
Education**

Carmen Fariña, Chancellor

- (1) Based on 2015-2016 Audited Register
- (2) Based on 2014-2015 Blue Book Capacity

Impact of Rezoning – Projected Zone Size At Scale

School Name	2015-2016 K Zone Size ¹	Projected K Zone Size
P.S. 031 Bayside	110	100 - 110
P.S. 041 Crocheron	72	60 - 70
P.S. 159	133	110 - 120
P.S. 162 John Golden	125	100 - 110
P.S. 203 Oakland Gardens	117	90 - 100
New School at Building Q332	-	70 - 80

Impact of Rezoning – Total Enrollment & Utilization

Projected At Scale					
School Name	Grade Span At Scale	Total Enrollment ¹	Total Building Capacity ²	Utilization Rate	Change in Utilization
P.S. 031 Bayside	K-5*	520 - 550	391	133% - 141%	No Change
P.S. 041 Crocheron	K-5	330 – 360	295	112% - 122%	↓
P.S. 159	K-5*	640 – 670	534	120% - 125%	No Change ³
P.S. 162 John Golden	K-5	635 - 665	423	150% - 157%	↓
P.S. 203 Oakland Gardens	K-5*	740 - 770	609	122% - 126%	↓
New School at Building Q332	K-5	500 - 530	468 ⁴	107% - 113%	↑

* Includes a Pre-Kindergarten program

(1) See appendix for assumed number of sections and average class sizes used to derive total enrollment.

(2) Based on 2014-2015 Blue Book Capacity

(3) Although P.S. 159's and P.S. 31's zone size would be reduced minimally, enrollment is expected to remain the same.

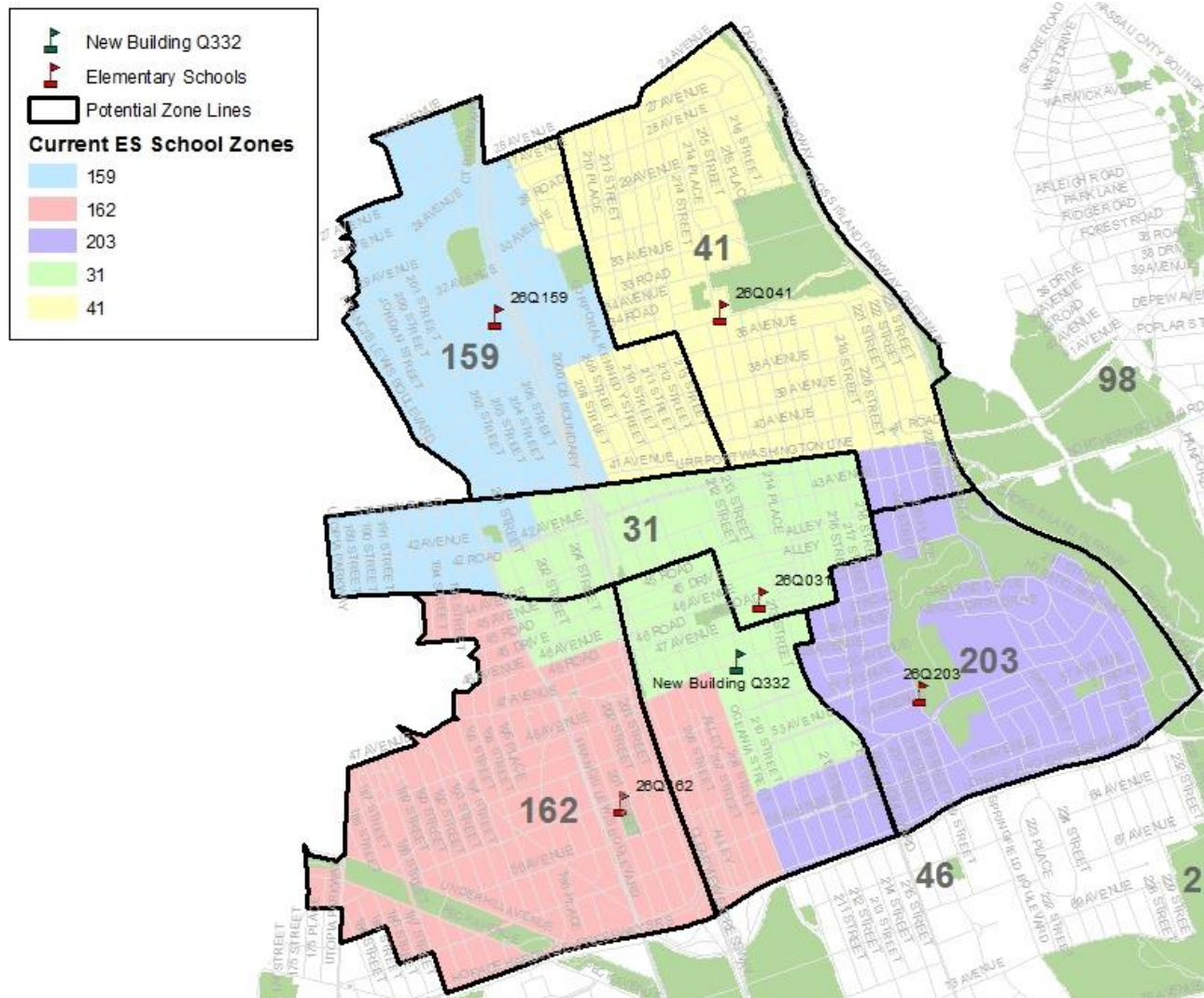
(4) Based on the designed capacity of Q332 as reported by the School Construction Authority



**Department of
Education**

Carmen Fariña, Chancellor

Proposed Zone Lines¹



(1) All zone lines run down the center of the street unless otherwise specified.

Contact Information and Next Steps

- The CEC will vote on May 31, 2016
- Feedback can be provided to the Superintendent, the CEC, and the Office of District Planning

Community
Superintendent

Phone: (718) 631-6960
Email: Superintendent@District26.org
Subject: District 26 Zoning

CEC
Community
Education Council

Email: CEC26@schools.nyc.gov
Subject: District 26 Zoning

ODP
Office of District
Planning

Email: QueensZoning@schools.nyc.gov
Subject: D26 Zoning

Appendix A.1: Admissions Process¹ - Pre-Kindergarten

1. Students residing in the zone, who have a sibling pre-registered or enrolled at the time of application submission and will be enrolled in grades K-5 in the school at the start of the following school year.¹
2. Students residing in the zone, who do not have a sibling at the school.¹
3. Students residing in the district, who have a sibling at the school,
 - a. who have no zoned school or whose zoned school has no pre-K program, then
 - b. who are zoned to a different school which has a pre-K program.
4. Students residing in the borough, who have a sibling at the school.
5. Students residing out-of-borough, who have a sibling at the school.
6. Students residing in the district,
 - a. who have no zoned school or whose zoned school has no pre-K program, then
 - b. who are zoned to a different school which has a pre-K program.
7. Students residing in the borough.
8. Students residing out-of-borough.



Appendix A.2 : Admissions Process¹ - Kindergarten

Students will be admitted to kindergarten based upon the following priorities:

- 1 - Zoned students whose verified siblings are pre-registered or enrolled at the time of application submission and will be enrolled in grades K-5 in the school at the start of the following school year
- 2 - Zoned students other than those in (1) above applying to the zoned school
- 3 - Students whose verified siblings are pre-registered or enrolled at the time of application submission and will be enrolled in grades K-5 in the school at the start of the following school year who are not zoned to the school,
 - a. Within District first, then
 - b. Out of District
- 4 - Students currently attending the school's pre-kindergarten program who reside outside the school's zone, *without* a sibling who will be in grades K-5 at the school in the following school year,
 - a. Within District first, then
 - b. Out of District
- 5 - Students other than those in (3a) and (4a) above who are residents of that district
- 6 - Students other than those in (3b) and (4b) who are residents of another district

(1) Please refer to Chancellor's Regulation A-101 for further information.

Appendix B – Projected Section Counts

GE/ICT

School Name	Pre-Kindergarten	Kindergarten	Grades 1-5	Self-Contained
P.S. 031 Bayside	2	4	3	3
P.S. 041 Crocheron	-	2 - 3	2	1
P.S. 159	3	4	4	2
P.S. 162 John Golden	-	4	4	-
P.S. 203 Oakland Gardens	3	5 ¹	4 ²	3
New School at Building Q332	TBD	3	3	3



**Department of
Education**

Carmen Fariña, Chancellor

- (1) This includes a Gifted & Talented kindergarten section.
- (2) This includes a Gifted & Talented Section on each grade.

Appendix C – Planned Average Class Sizes

GE/ICT

School Name	Pre-Kindergarten	Kindergarten	Grades 1-5	Self-Contained
P.S. 031 Bayside	18	21	27	8
P.S. 041 Crocheron	-	19	28	8
P.S. 159	18	23	26	8
P.S. 162 John Golden	-	24	28	-
P.S. 203 Oakland Gardens	18	24	29	8
New School at Building Q332	TBD	24	28	8



Appendix D – Zone Retention and Enrollment Rates

School Name	Capped	K-Waitlist	Zone Retention Rate for Kindergarten		Zone Enrollment Rate for Kindergarten	
			Current ¹	Projected	Current	Projected
P.S. 031 Bayside	No	No	67%	70% - 80%	87%	90% - 100%
P.S. 041 Crocheron	No	No	85%	85% - 95%	73%	75% - 85%
P.S. 159	No	Yes	69%	75% - 85%	96%	90% - 100%
P.S. 162 John Golden	Yes	No	74%	70% - 80%	95%	90% - 100%
P.S. 203 Oakland Gardens	No	No	90%	90% - 100%	75%	70% - 80%
New School at Building Q332	-	-	-	80% - 90%	-	75% - 85%

Appendix E.1 – Zone Demographic Changes (Ethnicity)

School Name	Zone Percent Minority ¹	
	Current	Planned
P.S. 031 Bayside	91%	80% - 90%
P.S. 041 Crocheron	64%	60% - 70%
P.S. 159	75%	70% - 80%
P.S. 162 John Golden	88%	80% - 90%
P.S. 203 Oakland Gardens	85%	80% - 90%
New School at Building Q332	-	80% - 90%

- (1) Zone Percent Minority figures are based on the ethnicity of zoned kindergarten students from the 2015-2016 Audited Register. Students identified as "White – not of Hispanic origin" are not counted as minority. Figures do not necessarily represent the demographics of the school.

Appendix E.2 – Zone Demographic Changes (Socio-Economic)

School Name	Zone Percent Free & Reduced Price Lunch ¹	
	Current	Planned
P.S. 031 Bayside	46%	40% - 50%
P.S. 041 Crocheron	32%	30% - 40%
P.S. 159	47%	35% - 45%
P.S. 162 John Golden	49%	45% - 55%
P.S. 203 Oakland Gardens	36%	35% - 45%
New School at Building Q332	-	40% - 50%



(1) Zone Percent Free and Reduced Lunch figures are based on the eligibility of zoned kindergarten students from the 2015-2016 Audited Register. Figures do not necessarily represent the demographics of the school.

Questions