



# Office of District Planning

Proposal for the Rezoning of  
P.S. 63, P.S. 64, P.S. 100, P.S. 108,  
P.S. 124, P.S. 146, and New School  
in Building Q335

PRESENTED BY:

Albery Corona  
Director of Queens Planning

William Candell  
Associate Director of Analytics

***September 19, 2016***

# New Elementary School Building Q335



- Located at 9840 Albert Road
- Anticipated to open for the 2017-2018 school year
- Capacity: 516 elementary school seats, including 96 seats for a District 75 program

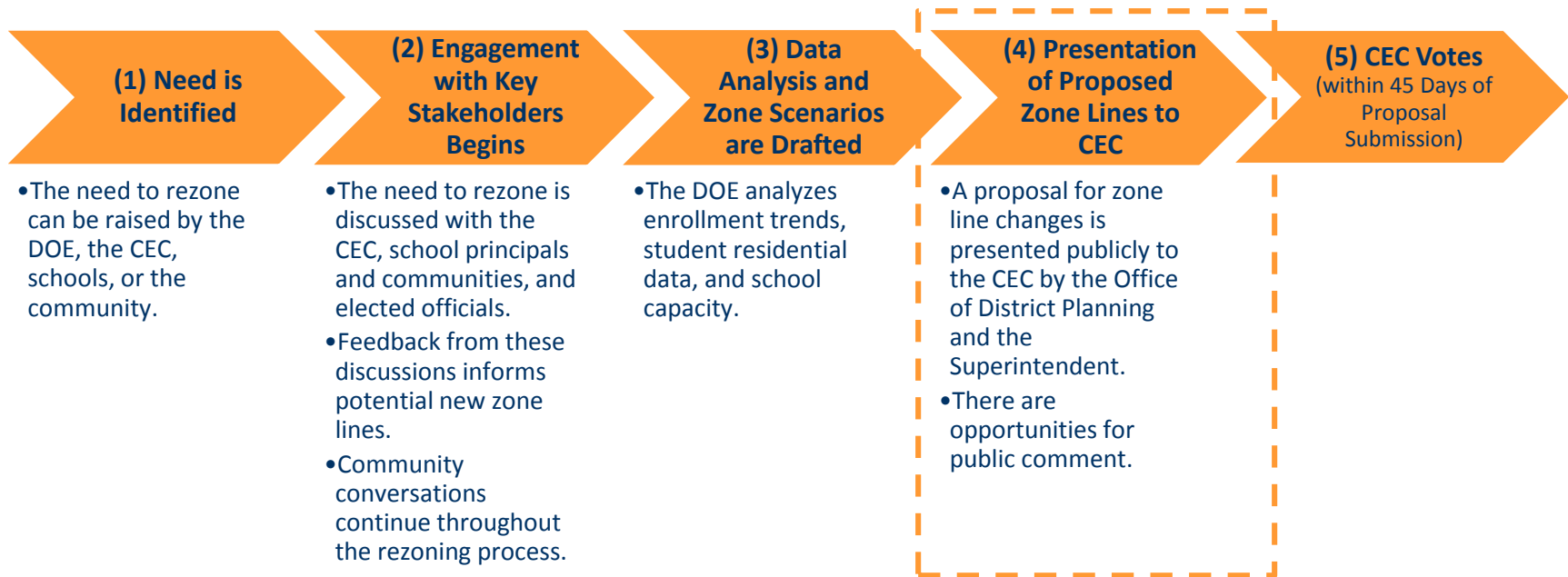
# Rationale for Rezoning New School in Q335

---

- Create a zone for the new elementary school in building Q335, providing a new school option for students in Ozone Park and South Ozone Park
- Help reduce overcrowding at elementary schools in the Ozone Park and South Ozone Park neighborhoods
- Plan for the admissions at the new school



# Overview of Rezoning Process & Timeline



## Timeline for 2017 Implementation



# Guiding Policies and Principles for Rezoning

---

- Pending approval by the CEC in October 2016, proposed changes would take effect for the 2017-2018 academic year.
- Pending approval by the CEC, proposed changes would only impact incoming pre-kindergarten, kindergarten, or new students to the system. All currently enrolled students may remain in their school until graduation.
- Sibling grandfathering for pre-kindergarten and kindergarten students, as determined by CEC 27, will be applicable.
- All impacted schools will continue to admit students according to Chancellor's regulation A-101.
- The Office of Pupil Transportation (OPT) will follow standard procedure to determine bus service eligibility of general education students, as outlined by Chancellor's regulation A-801.



# Methodology – Determining the Target K Zone Size

## **Seat Supply: What is the capacity of each school?**

Specifically, how many instructional sections (i.e. classes) and how many students can each building accommodate?

The DOE assesses capacity based on:

- Full-size classrooms available in the building
- Cluster rooms and administrative space a school is entitled to per the Citywide Instructional Footprint
- Historical enrollment increases and decreases at each grade level



# Methodology – Determining the Target K Zone Size

## Seat Demand: How many students do we anticipate?

We assess demand – both from inside and outside the zone – based on:

- The historical number of kindergarten students living in the zone;
- Historical kindergarten waitlists and capping activity;
- Historical average class sizes;
- Historical zone retention rates (the percent of students who live in the zone and attend their zoned school);
- Historical zone enrollment rates (the percent of enrolled students who are also zoned to that school); and
- Anticipated kindergarten growth, based on current/future housing developments.



# Methodology – Determining the Zone Lines

---

- Contains appropriate number of residents for a school's size, based on recent public school enrollment trends
- Factors we take into consideration:
  - New residential construction
  - Diversity
  - Geographic barriers
  - Travel distance



# Schools Affected by Rezoning

In the current school year (2016-2017):

DBN	School Name	Grade Span	Total Enrollment <sup>1</sup>	Total Org Capacity <sup>2</sup>	Utilization %
27Q063	P.S. 63 Old South	K-5*	1,352	1,110	123%
27Q064	P.S. 64 Joseph P. Addabbo	K-5	656	401	164%
27Q100	P.S. 100 Glen Morris	K-5*	935	969	98%
27Q108	P.S. 108 Captain Vincent G. Fowler	K-5*	1,471	1,244	118%
27Q124	P.S. 124 Osmond A. Church	K-8	1,252	919	136%
27Q146	P.S. 146 Howard Beach	K-8*	705	552	128%

\* School includes a Pre-Kindergarten program



- (1) Based on 2016-17 Budget register projections
- (2) Based on 2014-2015 Blue Book Capacity

**Department of  
Education**

*Carmen Fariña, Chancellor*

# Impact of Rezoning – Projected Zone Size At Scale

School Name	2015-2016 K Zone Size <sup>1</sup>	Projected K Zone Size	Change in K Zone Size
P.S. 63 Old South	232	225-235	No Change
P.S. 64 Joseph P. Addabbo	120	80-90	↓
P.S. 100 Glen Morris	145	135-145	No Change
P.S. 108 Captain Vincent G. Fowler	190	185-195	No Change
P.S. 124 Osmond A. Church	121	100-110	↓
P.S. 146 Howard Beach	91	70-80	↓
New ES @ Building Q335	-	75-85	

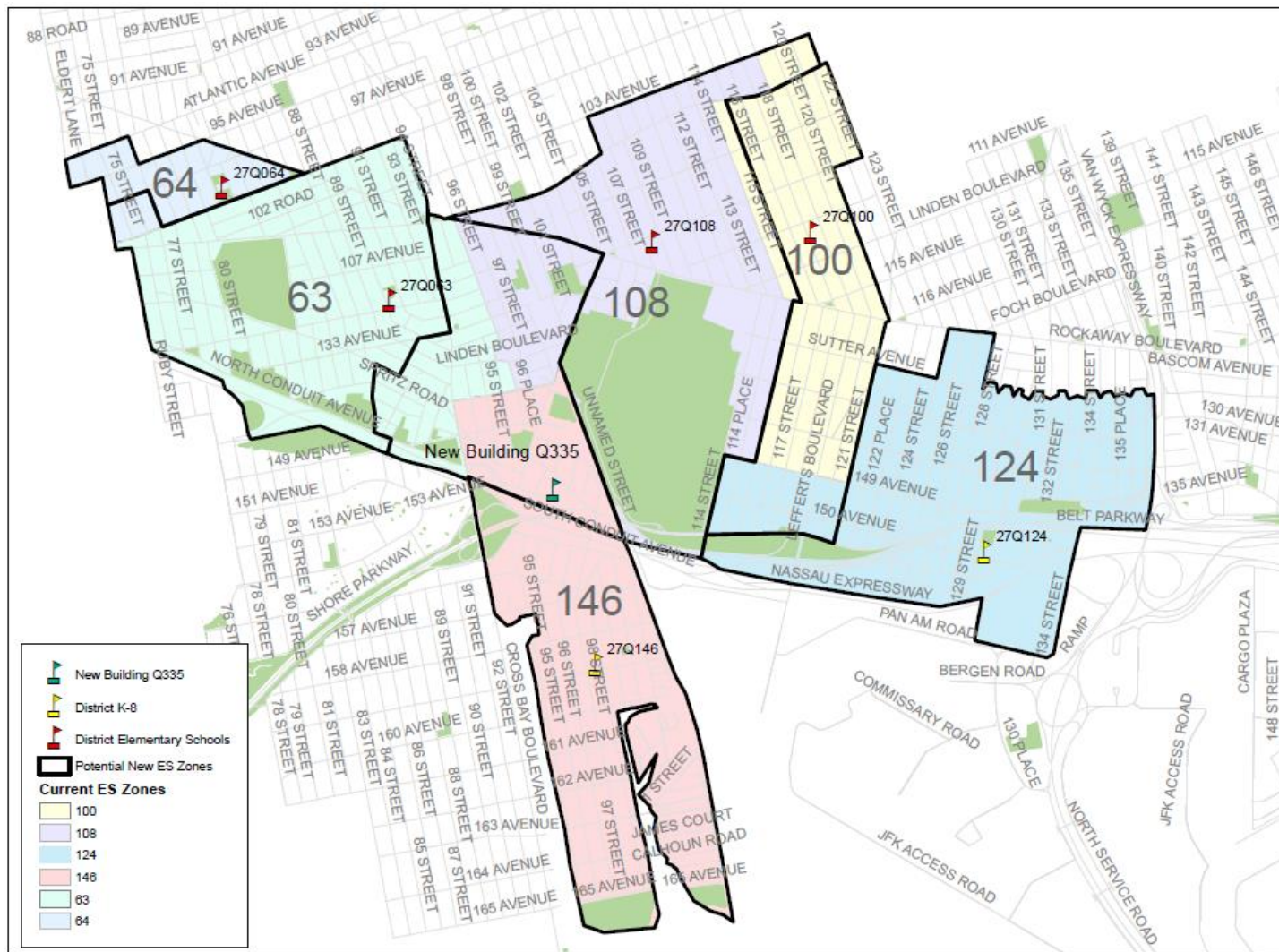
# Impact of Rezoning – Total Enrollment & Utilization

School Name	Projected At Scale				Change in Utilization
	Grade Span At Scale	Total Enrollment <sup>1</sup>	Total Org Capacity <sup>2</sup>	Utilization Rate	
P.S. 63 Old South	K-5*	1,310-1,340	1,110	118%-121%	No Change
P.S. 64 Joseph P. Addabbo	K-5	545-575	401	136%-143%	↓
P.S. 100 Glen Morris	K-5	910-940	969	94%-97%	No Change
P.S. 108 Captain Vincent G. Fowler	K-5*	1,415-1,445	1,244	114%-116%	No Change
P.S. 124 Osmond A. Church	K-8	950-980	919	103%-108%	↓
P.S. 146 Howard Beach	K-8*	595-625	552	108%-113%	↓
New ES @ Building Q335	K-5	495-525	420	118%-125%	

\* Includes a Pre-Kindergarten program

- (1) See appendix for assumed number of sections and average class sizes used to derive total enrollment.
- (2) Based on 2014-2015 Blue Book Capacity.
- (3) Based on the designed capacity of Q335 as reported by the School Construction Authority





(1) All zone lines run down the center of the street unless otherwise specified.

# Contact Information and Next Steps

- The CEC will vote on October 17, 2016
- Feedback can be provided to the Superintendent, the CEC, and the Office of District Planning

Community  
Superintendent

Phone: (718) 642-5770  
Email: [District27@schools.nyc.gov](mailto:District27@schools.nyc.gov)  
Subject: District 27 Zoning

CEC  
Community  
Education Council

Email: [CEC27@schools.nyc.gov](mailto:CEC27@schools.nyc.gov)  
Subject: District 27 Zoning

ODP  
Office of District  
Planning

Email: [QueensZoning@schools.nyc.gov](mailto:QueensZoning@schools.nyc.gov)  
Subject: D27 Zoning

---

---

# Questions

# Appendix A.1: Admissions Process<sup>1</sup> - Pre-Kindergarten

1. Students residing in the zone, who have a sibling pre-registered or enrolled at the time of application submission and will be enrolled in grades K-5 in the school at the start of the following school year.<sup>1</sup>
2. Students residing in the zone, who do not have a sibling at the school.<sup>1</sup>
3. Students residing in the district, who have a sibling at the school,
  - a. who have no zoned school or whose zoned school has no pre-K program, then
  - b. who are zoned to a different school which has a pre-K program.
4. Students residing in the borough, who have a sibling at the school.
5. Students residing out-of-borough, who have a sibling at the school.
6. Students residing in the district,
  - a. who have no zoned school or whose zoned school has no pre-K program, then
  - b. who are zoned to a different school which has a pre-K program.
7. Students residing in the borough.
8. Students residing out-of-borough.



# Appendix A.2 : Admissions Process<sup>1</sup> - Kindergarten

Students will be admitted to kindergarten based upon the following priorities:

- 1 - Zoned students whose verified siblings are pre-registered or enrolled at the time of application submission and will be enrolled in grades K-5 in the school at the start of the following school year
- 2 - Zoned students other than those in (1) above applying to the zoned school
- 3 - Students whose verified siblings are pre-registered or enrolled at the time of application submission and will be enrolled in grades K-5 in the school at the start of the following school year who are not zoned to the school,
  - a. Within District first, then
  - b. Out of District
- 4 - Students currently attending the school's pre-kindergarten program who reside outside the school's zone, *without* a sibling who will be in grades K-5 at the school in the following school year,
  - a. Within District first, then
  - b. Out of District
- 5 - Students other than those in (3a) and (4a) above who are residents of that district
- 6 - Students other than those in (3b) and (4b) who are residents of another district

(1) Please refer to Chancellor's Regulation A-101 for further information.

# Appendix B – Projected Section Counts

## GE/ICT

School Name	Pre-Kindergarten	Kindergarten	Grades 1-5	Grades 6-8	Self-Contained
P.S. 63 Old South	2	8	7	-	7
P.S. 64 Joseph P. Addabbo	-	4	3-4	-	1
P.S. 100 Glen Morris	4	6	5	-	6
P.S. 108 Captain Vincent G. Fowler	2	9	8	-	4
P.S. 124 Osmond A Church	-	4	4	4	3
P.S. 146 Howard Beach	1	3	3	3	2
New School at Building Q335	2	3-4	3	-	2



# Appendix C – Planned Average Class Sizes

GE/ICT

School Name	Pre-Kindergarten	Kindergarten	Grades 1-5	Grades 6-8	Self-Contained
P.S. 63 Old South	18	23-25	28-30	-	12
P.S. 64 Joseph P. Addabbo	-	22-24	22-30	-	10
P.S. 100 Glen Morris	18	21-23	25-27	-	12
P.S. 108 Captain Vincent G. Fowler	18	24-25	27-29	-	12
P.S. 124 Osmond A Church	-	24-25	25-26	25-26	11
P.S. 146 Howard Beach	18	23-25	24-25	24-25	7
New School at Building Q335	18	22-24	22-30	-	10



# Appendix D – Zone Retention and Enrollment Rates

School Name	Capped	K-Waitlist	Zone Retention Rate for Kindergarten		Zone Enrollment Rate for Kindergarten	
			Current <sup>1</sup>	Projected	Current	Projected
P.S. 63 Old South			78%	75%-85%	93%	90%-100%
P.S. 64 Joseph P. Addabbo	Y		84%	85%-95%	95%	85%-95%
P.S. 100 Glen Morris			82%	80%-90%	86%	85%-95%
P.S. 108 Captain Vincent G. Fowler			84%	85%-95%	78%	80%-90%
P.S. 124 Osmond A Church			73%	75%-85%	86%	85%-95%
P.S. 146 Howard Beach		Y	82%	85%-95%	97%	90%-100%
New School at Building Q335			-	80%-90%	-	85%-95%

(1) The current rates (both zone retention and zone enrollment) are based on the 2015-2016 Audited Register.



## Appendix E.1 – Zone Demographic Changes (Ethnicity)

School Name	Zone Percent Minority <sup>1</sup>	
	Current	Planned
P.S. 63 Old South	90%	85%-95%
P.S. 64 Joseph P. Addabbo	98%	90%-100%
P.S. 100 Glen Morris	95%	90%-100%
P.S. 108 Captain Vincent G. Fowler	94%	90%-100%
P.S. 124 Osmond A Church	97%	90%-100%
P.S. 146 Howard Beach	40%	30%-40%
New School at Building Q335	-	75%-85%

- (1) Zone Percent Minority figures are based on the ethnicity of zoned kindergarten students from the 2015-2016 Audited Register. Students identified as "White – not of Hispanic origin" are not counted as minority. Figures do not necessarily represent the demographics of the school.

## Appendix E.2 – Zone Demographic Changes (Socio-Economic)

School Name	Zone Percent Free & Reduced Price Lunch <sup>1</sup>	
	Current	Planned
P.S. 63 Old South	82%	75%-85%
P.S. 64 Joseph P. Addabbo	75%	65%-75%
P.S. 100 Glen Morris	51%	40%-50%
P.S. 108 Captain Vincent G. Fowler	82%	70%-80%
P.S. 124 Osmond A Church	62%	55%-65%
P.S. 146 Howard Beach	51%	45%-55%
New School at Building Q335	-	65%-75%

(1) Zone Percent Free and Reduced Lunch figures are based on the eligibility of zoned kindergarten students from the 2015-2016 Audited Register. Figures do not necessarily represent the demographics of the school.