



# Office of District Planning

*Rezoning Presentation to  
CEC 28 for Elementary School  
and Middle School Proposals*



**Department of  
Education**

*Carmen Fariña, Chancellor*

*April 16, 2015*

# Table of Contents

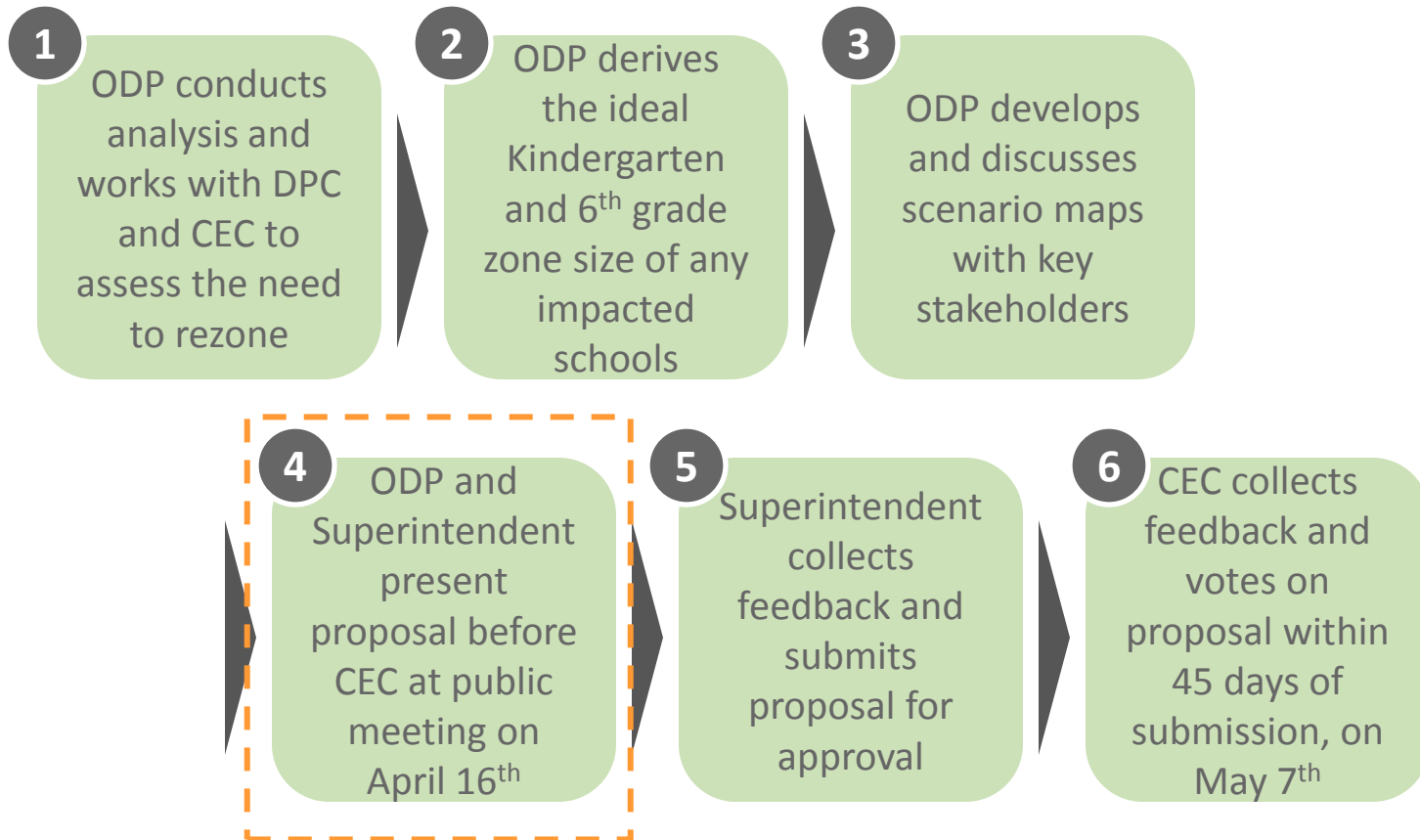
	Slide #
I. Rationale for Rezoning . . . . .	3
II. Overview of the Rezoning Process . . . . .	4
III. Guiding Policies and Principles . . . . .	5
IV. Methodology . . . . .	6-7
a. Determining the Target K and 6 <sup>th</sup> Zone Size	
b. Determining the Zone Lines	
V. Schools Affected by Rezoning . . . . .	8
VI. Impact of Rezoning . . . . .	9-10
VII. Proposed Zone Lines . . . . .	11-12
VIII. Contact Information for Comments . . . . .	13
IX. Appendices . . . . .	14-20
a. Admissions Processes	
b. Planned Section Counts	
c. Planned Average Class Sizes	
d. Zoned Percentage Rates	

# Rationale for Rezoning

---

- Create elementary and middle school zones for the new schools in new building Q314, located at 88-08 164<sup>th</sup> Street. The new schools are opening for the 2015-2016 school year, however the proposed zones would be implemented for the 2016-2017 school year
- Alleviate the overcrowding in the P.S. 182 and P.S. 86 kindergarten zones and eliminate the need to overflow students from P.S. 182 and P.S. 86
- Alleviate enrollment pressure at J.H.S. 217

# Overview of Rezoning Process



# Guiding Policies and Principles

---

- Pending approval by the CEC, the proposed changes would take effect for the 2016-2017 academic year.
- Pending approval by the CEC, the proposed changes would only impact incoming pre-kindergarten, kindergarten, or 6<sup>th</sup> grade students, or new students to the system. All currently enrolled students may remain in their school until graduation.
- Sibling grandfathering for pre-kindergarten and kindergarten students, as determined by CEC 28, may be applicable.
- See Appendix A for the admissions process as outlined in the Chancellor's regulation A-101.
- The Office of Pupil Transportation (OPT) will follow standard procedure to determine bus service eligibility of general education students, as outlined by Chancellor's regulation A-801.



## Methodology – Determining the Target Kindergarten and 6<sup>th</sup> Grade Zone Size

### Seat Supply: What is the capacity of each school?

Specifically, how many instructional sections can each building accommodate?

We assess capacity based on:

- The number of full-size classrooms available in the building;
- The number of cluster rooms to which a school is entitled; and
- Historical enrollment increases and decreases at each grade level.

### Seat Demand: How many students do we anticipate?

We assess demand – both from inside and outside the zone – based on:

- The historical number of kindergarten and 6<sup>th</sup> grade students living in the zone;
- Historical kindergarten waitlists and capping activity;
- Historical average class sizes;
- Historical zone retention rates (the percent of students who live in the zone and attend their zoned school);
- Historical zone enrollment rates (the percent of enrolled students who are also zoned to that school); and
- Anticipated kindergarten and 6<sup>th</sup> grade growth, based on current/future housing developments.



# Methodology – Determining the Zone Lines

**To the extent possible, we draw zone lines in a way that:**

- Achieves the targeted kindergarten and 6th grade zone size for all affected schools;
- Addresses concerns of the local community;
- Accounts for residential construction and population growth within the affected areas;
- Takes geographic barriers (e.g. highways , cemeteries, parks, railyards, etc.) into account;
- Locates the school centrally within the zone;
- Minimizes the distance students must travel to attend their zoned school; and
- Maintains the diversity of schools.



# Schools Affected by Rezoning

In the current school year (2014-2015):

	DBN	School Name	Grade Span	Total Enrollment <sup>1</sup>	Total Building Capacity <sup>2</sup>	Building Utilization %
ES	28Q349	New Elementary School in Building Q314	-	-	-	-
	28Q086	P.S. 86 <sup>3</sup>	K-5	942	758	124%
	28Q182	P.S. 182 Samantha Smith	K-5	935	799 <sup>4</sup>	124% <sup>5</sup>
MS	28Q358	New Middle School in Building Q314	-	-	-	-
	28Q217	J.H.S. 217 Robert A. Van Wyck	6-8	1,600	1,586	101%

(1) Based on Audited Register as of October 31, 2014.

(2) Based on 2013-2014 Blue Book Capacity. Capacity includes all buildings in which an organization is sited.

(3) P.S. 86 has a pre-kindergarten (PK) program. Total enrollment and utilization includes PK projections.

(4) Includes capacity of D75 program Q009 in building Q277.

(5) Includes enrollment of D75 program Q009 in building Q277.



# Impact of Rezoning – Projected Zone Size beginning Fall 2016

	School Name	Current Zone Size <sup>1</sup>	Projected K or 6 <sup>th</sup> Zone Size	Change in Zone Size
ES	New Elementary School in Building Q314	-	85-95	-
	P.S. 86	216	155-165	↓
	P.S. 182 Samantha Smith	164	135-145	↓
MS	New Middle School in Building Q314	-	70-80	-
	J.H.S. 217 Robert A. Van Wyck	733	655-665	↓

# Impact of Rezoning – Total Enrollment & Utilization

	School Name	Grade Span at Scale	Projected			Change
			Total Enrollment <sup>1</sup>	Total Building Capacity <sup>2</sup>	Building Utilization Rate	
ES	New Elementary School in Building Q314	K-5	500-580	884 <sup>3</sup>	105%-115%	-
	P.S. 86	K-5	810-950	758	115%-125%	No Change <sup>4</sup>
	P.S. 182 Samantha Smith	K-5	750-890	799 <sup>5</sup>	105%-115% <sup>6</sup>	↓
MS	New Middle School in Building Q314	6-8	350-385	884 <sup>3</sup>	105%-115%	-
	J.H.S. 217 Robert A. Van Wyck	6-8	1,365-1,500	1,586	90%-100%	↓

(1) See appendix for assumed number of sections and average class sizes used to derive total enrollment. Total enrollment for the new elementary school and P.S. 86 includes planned pre-kindergarten sections.

(2) Based on 2013-2014 Blue Book Capacity.

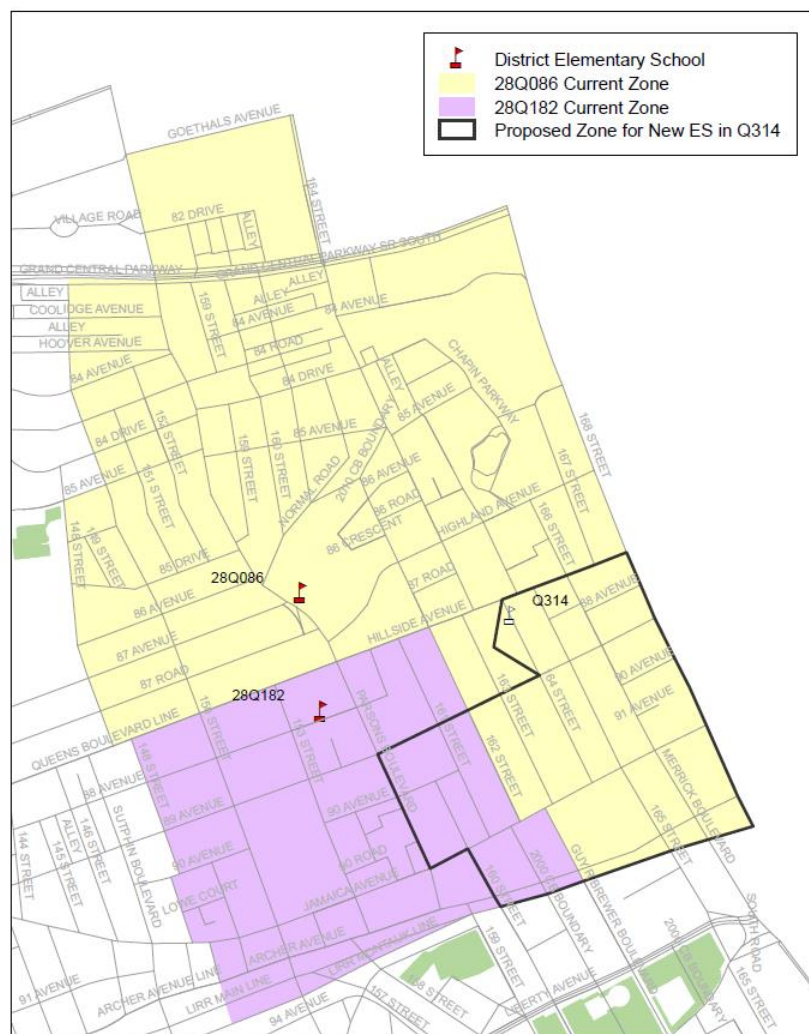
(3) Preliminary capacity provided by the School Construction Authority (SCA). Includes District 75 program capacity. Capacity is subject to change.

(4) Due to a rezoning and grade reconfiguration implemented in the 2011-2012 school year, P.S. 86 currently has smaller cohorts on upper grades than on lower grades. This rezoning proposal will allow P.S. 86's enrollment to remain stable across grades and for the school to better accommodate zoned students.

(5) Includes capacity of District 75 program Q009 in building Q277.

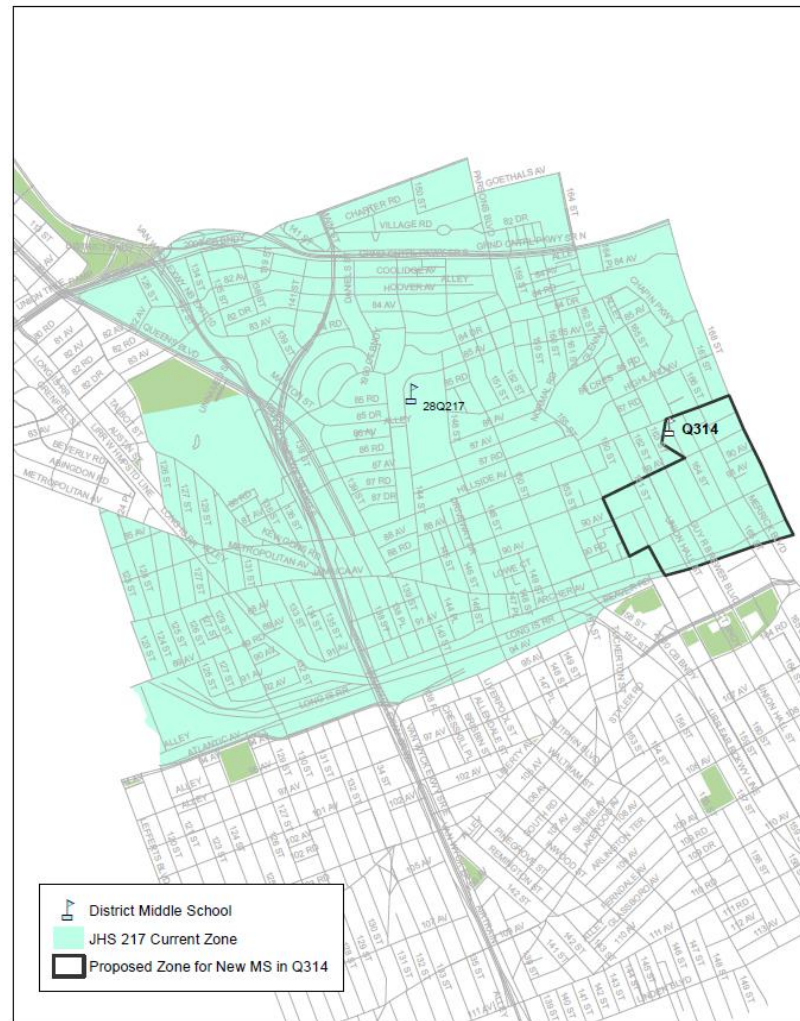
(6) Includes enrollment of District 75 program Q009 in building Q277.

# Proposed Zone Lines – Elementary School



- (1) All zone lines run down the center of the street with the exception of 164<sup>th</sup> Street between Hillside Avenue and 89<sup>th</sup> Avenue, which includes both sides of the street.

# Proposed Zone Lines – Middle School



- (1) All zone lines run down the center of the street with the exception of 164<sup>th</sup> Street between Hillside Avenue and 89<sup>th</sup> Avenue, which includes both sides of the street.

# Contact Information and Next Steps

- Community sends feedback to Superintendent, CEC, and ODP
- CEC and ODP will take feedback into account
- The CEC is expected to vote on May 7, 2015

Community  
Superintendent

Phone: (718) 557-2618  
Email: [MSarduy@schools.nyc.gov](mailto:MSarduy@schools.nyc.gov)  
Subject: D28 Zoning

CEC  
Community  
Education Council

Email: [CEC28@schools.nyc.gov](mailto:CEC28@schools.nyc.gov)  
Subject: D28 Zoning

ODP  
Office of District  
Planning

Email: [QueensZoning@schools.nyc.gov](mailto:QueensZoning@schools.nyc.gov)  
Subject: D28 Zoning

# Appendix A.1 – Admissions Process<sup>1</sup> - Pre-Kindergarten

1. Students residing in the zone, who have a sibling at the school in grades K-5 in September 2015.<sup>1</sup>
2. Students residing in the zone, who do not have a sibling at the school.<sup>1</sup>
3. Students residing in the district, who have a sibling at the school,
  - a. who have no zoned school or whose zoned school has no pre-K program, then
  - b. who are zoned to a different school which has a pre-K program.
4. Students residing in the borough, who have a sibling at the school.
5. Students residing out-of-borough, who have a sibling at the school.
6. Students residing in the district,
  - a. who have no zoned school or whose zoned school has no pre-K program, then
  - b. who are zoned to a different school which has a pre-K program.
7. Students residing in the borough.
8. Students residing out-of-borough.



# Appendix A.2 – Admissions Process<sup>1</sup> - Kindergarten

Students will be enrolled in New York City elementary schools by the following priority:

1. Zoned students whose verified siblings are pre-registered or enrolled at the time of application submission and will be enrolled in grades K-5 in the school at the start of the following school year
2. Zoned students other than those in (1) above applying to the zoned school
3. Students whose verified siblings are pre-registered or enrolled at the time of application submission and will be enrolled in grades K-5 in the school at the start of the following school year who are not zoned to the school,
  - a. Within District first, then
  - b. Out of District
4. Students currently attending the school's pre-kindergarten program who reside outside the school's zone, *without* a sibling who will be in grades K-5 at the school in the following school year,
  - a. Within District first, then
  - b. Out of District
5. Students other than those in (3a) and (4a) above who are residents of that district
6. Students other than those in (3b) and (4b) who are residents of another district

(1) Please refer to Chancellor's Regulation A-101 for further information.

# Appendix A.2 – Admissions Process<sup>1</sup> - 6<sup>th</sup> Grade

Students will be enrolled in New York City middle schools by the following priority:

1. Students with a zoned middle school have a priority to attend that school if they rank it on their middle school application. During the middle school admissions process, available seats (determined by OSE) at zoned schools will be available for non-zoned students who apply once all of the zoned students have been accommodated in the application process. Zoned students who do not apply to their zoned school will be accommodated before non-zoned students on appeal as space is available.
2. Fifth-grade students attending a K-8 school maintain a priority for the 6<sup>th</sup> grade middle school admissions process if they rank the continuing K-8 school on their middle school choice application. During the middle school admissions process, available seats (determined by OSE) at K-8 schools will be available for non-continuing students who apply once all of the continuing students have been accommodated in the application process. Continuing students will be accommodated before non-continuing students on appeal as space is available.
3. When students receive a non-zoned or non-continuing school placement as a part of the middle school choice process, the students no longer have any entitlement to return to their zoned or K-8 school for the duration of middle school. Any requests for the zoned or K-8 school must be expressed through the PER or transfer process.



# Appendix B – Projected Section Counts

## Elementary Schools

### GE/ICT

School Name	PK	Kindergarten	Grades 1-5	Self-Contained
New Elementary School in Building Q314	2	4	3	3
P.S. 86	2	6	5	5
P.S. 182 Samantha Smith	0	5	5	6

## Middle Schools

### GE/ICT

School Name	Grade 6	Grade 7	Grade 8	Self-Contained
New Middle School in Building Q314	4	4	4	2
J.H.S. 217 Robert A. Van Wyck	15	16	16	8



# Appendix C – Projected Average Class Sizes

## Elementary Schools

### GE/ICT

School Name	Kindergarten	Grades 1-2	Grades 3-5	Self-Contained
New Elementary School in Building Q314	20-22	25-30	25-30	6-12
P.S. 86	24-25	25-30	25-30	6-12
P.S. 182 Samantha Smith	24-25	25-30	25-30	6-12

## Middle Schools

### GE/ICT

School Name	Grade 6	Grade 7	Grade 8	Self-Contained
New Middle School in Building Q314	27-30	27-30	27-30	12
J.H.S. 217 Robert A. Van Wyck	27-30	27-30	27-30	12



# Appendix D – Zone Retention and Enrollment Rates

	School Name	Historic Kindergarten Capping and Waitlist		Zone Retention Rate for Kindergarten or 6 <sup>th</sup> Grade		Zone Enrollment Rate for Kindergarten or 6 <sup>th</sup> Grade	
		Capped K	K- Waitlist	Current <sup>1</sup>	Projected <sup>2</sup>	Current	Projected
ES	New Elementary School in Building Q314	-	-	-	80%-90%	-	90%-100%
	P.S. 86	Yes	No	78%	80%-90%	92%	90%-100%
	P.S. 182 Samantha Smith	Yes	No	82%	80%-90%	96%	90%-100%
MS	New Middle School in Building Q314	N/A	N/A	-	60%-70%	-	45%-55%
	J.H.S. 217 Robert A. Van Wyck	N/A	N/A	67%	60%-70%	97%	90%-100%



- (1) The current rates (both zone retention and zone enrollment) are based on the 2014 Audited Register as of October 31, 2014.
- (2) Planned retention rates are based on various factors, including but not limited to the historical number of zoned kindergarten students that were waitlisted or overflowed due to capping.

# Appendix E – Demographic Changes

		Zone Percent Minority <sup>1</sup>	
	School Name	Current	Projected
ES	New Elementary School in Building Q314	-	90%-100%
	P.S. 86	95%	90%-100%
	P.S. 182 Samantha Smith	95%	90%-100%
MS	New Middle School in Building Q314	-	90%-100%
	J.H.S. 217 Robert A. Van Wyck	92%	90%-100%



(1) Zone Percent Minority figures are based on the ethnicity of zoned kindergarten and 6<sup>th</sup> grade students from the 2014 Audited Register as of October 31, 2014. Students identified as “White – not of Hispanic origin” are not counted as minority.