



Office of Portfolio Management

*Proposal for Rezoning
presented to CEC 30 by the
Community School District
Superintendent*



**Department of
Education**

Dennis M. Walcott, Chancellor

November 5, 2012

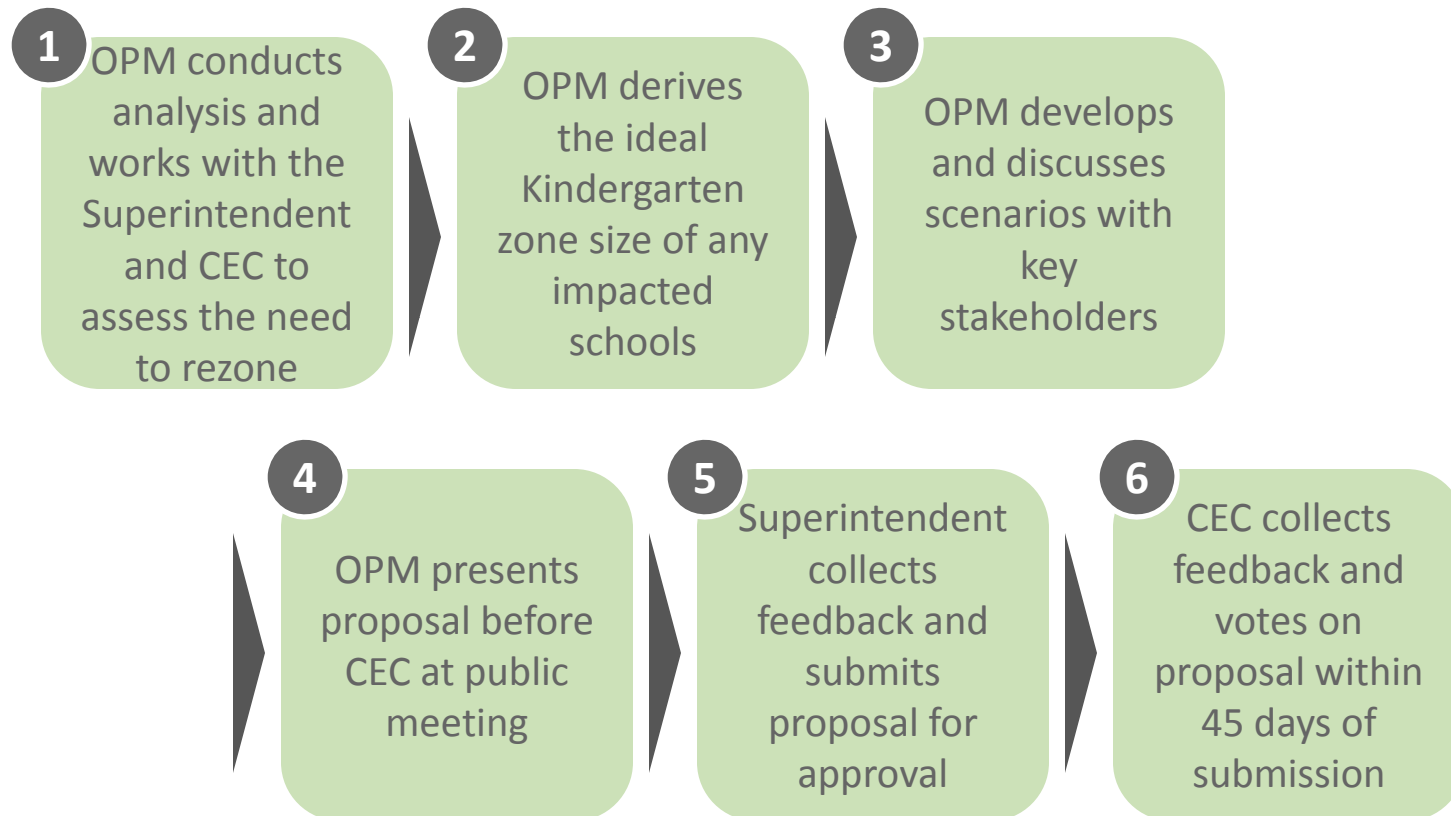
Table of Contents

	Slide #
I. Rationale for Rezoning	3
II. Overview of the Rezoning Process	4
III. Guiding Policies and Principles	5
IV. Methodology	6-7
a. Determining the Target K Zone Size	
b. Determining the Zone Lines	
V. Schools Affected by Rezoning	8
VI. Proposed Zone Lines	9
VII. Impact of Rezoning	10-12
VIII. Contact Information for Comments	13
IX. Appendix	14-18
a. Admissions Process	
b. Planned Section Counts	
c. Planned average Class Sizes	
d. Zoned Percentage Rates	
e. Overview of Projections methodology	

Rationale for Rezoning

- To create a zone for the new elementary school in new building Q329, at 26-25 97th Street, in September 2013.
- To alleviate overcrowding at P.S. 127.

Overview of Rezoning Process



Guiding Policies and Principles

- Pending approval by the CEC, the proposed changes would take effect for the 2013-14 academic year.
- Pending approval by the CEC, the proposed changes would only impact incoming Kindergarten or new students to the system. All currently enrolled students may remain in their school until graduation.
- Sibling enrollment policies would remain in effect. Children currently living in the affected zones who would be zoned to another school as a result of this proposal would retain their enrollment status as an in-zone sibling as long as they have an older sibling attending the school in grades 1-5 during the year in which the student would enroll in kindergarten.
- See Appendix A for the admissions process as outlined in the Chancellor's regulation A-101.

Methodology – Determining the Target K Zone Size

Seat Supply: What is the capacity of each school?

Specifically, how many instructional sections can each building accommodate?

We assess capacity based on:

- The number of full-size classrooms available in the building;
- The number of cluster rooms to which a school is entitled; and
- Historical enrollment increases and decreases at each grade level.

Seat Demand: How many students do we anticipate?

We assess demand – both from inside and outside the zone – based on:

- The historical number of Kindergarten students living in the zone;
- Historical Kindergarten waitlists and capping activity;
- Historical average class sizes;
- Historical zone retention rates (the percent of students who live in the zone and attend their zoned school);
- Historical zone enrollment rates (the percent of enrolled students who are also zoned to that school); and
- Anticipated Kindergarten growth, based on current/future housing developments.

Methodology – Determining the Zone Lines

To the extent possible, we draw zone lines in a way that:

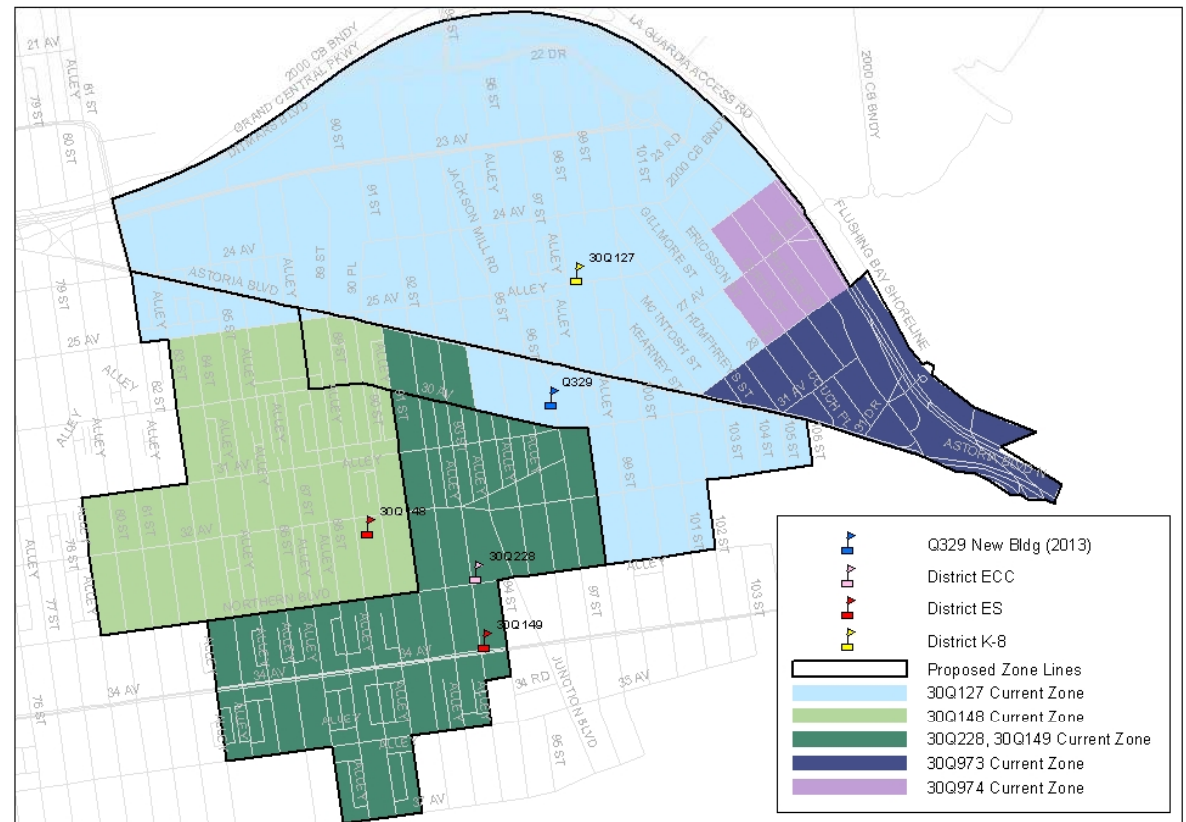
- Achieves the targeted Kindergarten zone size for all affected schools;
- Accounts for residential construction and population growth within the affected areas;
- Addresses concerns of the local community;
- Avoids forcing students to cross geographic barriers (e.g. highways , district lines, etc.);
- Centrally locates the school within the zone; and
- Minimizes the distance students must travel to attend their zoned school.

Schools Affected by Rezoning

DBN	School Name	Grade Span	Grade Span at Scale	Total Enrollment ¹	Total Capacity ²	Utilization %
30QTBD	New School	New School	K-5	New School	New School	New School
30Q127*	P.S. 127 Aerospace Science Magnet	K-8	K-8	1,391	1,189	117%
30Q149	P.S. 149 Christa McAuliffe	K-5	K-5	1,208	1,010	120%
30Q228*	P.S. 228 Early Childhood Magnet School of the Arts	K-2	K-2	349	214	163%
30Q148*	P.S. 148 Queens	K-5	K-5	1,057	982	108%

Proposed Zone Lines

Please refer to the handout
District 30 Elementary School
Proposal for CEC



District 30 Elementary School Proposal for CEC:
New School @ Q329, PS 127, PS 148, PS 149, & PS 228
Division of Portfolio Planning, November 5, 2012.

1 inch = 1,135 feet

Impact of Rezoning – Zone Size

School Name	Current K Zone Size ¹	Planned K Zone Size	Change in K Zone Size
New School	New School	70-80	New School
P.S. 127 Aerospace Science Magnet	193 ²	120-130	↓
P.S. 149 Christa McAuliffe	284	270-280	↓
P.S. 228 Early Childhood Magnet School of the Arts			
P.S. 148 Queens	187	180-190	No Change

- (1) The current Kindergarten zone size is based on the 2011-12 Audited Register.
- (2) Inclusive of approximately 20 Kindergarten students who reside within the Q973 and Q974 shared zoned, which zone students in Kindergarten to 30Q127 and students in grades 1-5 to 25Q021 and 25Q029 respectively.

Impact of Rezoning – Sections

School Name	Current ¹		Planned	
	# of GE/ICT K Sections	K Enrollment	# of GE/ICT K Sections	K Enrollment
New School	New School	New School	3	65-75
P.S. 127 Aerospace Science Magnet	6	168	4-5	90-125
P.S. 149 Christa McAuliffe	7	157	7	165-175
P.S. 228 Early Childhood Magnet School of the Arts	4	109	3	65-75
P.S. 148 Queens	8	181	8	170-180

Impact of Rezoning – Total Enrollment & Utilization^{1,2}

School Name ³	Current		Planned		Change
	Total Enrollment	Utilization Rate	Total Enrollment	Utilization Rate	
New School	New School	New School	400-465	106%-123%	New School
P.S. 127 Aerospace Science Magnet	1,391	117%	1,205-1,320	101%-111%	↓
P.S. 149 Christa McAuliffe	1,208	120%	1,175-1,240	116%-123%	No Change ³
P.S. 228 Early Childhood Magnet School of the Arts	349	163%	265-305	124%-143%	↓
P.S. 148 Queens	1,057	108%	1,010-1,080	103%-110%	No Change

- (1) All utilization rates in this slide are based on the 2011-12 Blue Book, except for New School. New School's planned utilization rate is based on the org capacity of new building Q329 in the School Construction Authority Building Completions Report as of April 2012.
- (2) All total enrollment figures in this slide are based on the 2011-12 Audited Register.
- (3) Although we anticipate an increase in K enrollment, we expect total enrollment and utilization to remain constant. P.S. 149 currently has inflated class sizes in the upper grades that are expected to decrease as a result of a previous rezoning.

Contact Information for Comments

Community
Superintendent

Phone: (718) 391 – 8323
Email: PCompos@schools.nyc.gov
Subject: District 30 Zoning

CEC
Community
Education Council

Email: CEC30@schools.nyc.gov
Subject: District 30 Zoning

OPM
Office of Portfolio
Management

Email: QueensZoning@schools.nyc.gov
Subject: District 30 Zoning

Appendix A – Admissions Process

Students are (and would continue to be) enrolled in New York City elementary schools by the following priority:

- 1 - Zoned students with verified siblings who will be enrolled in grades 1-5 in the school as of September 2013
- 2 - Zoned students without siblings applying to the zoned school
- 3 - Non-zoned students with verified siblings, who will be enrolled in grades 1-5 in the school as of September 2013,
 - a. Within District first, then
 - b. Out of District
- 4 - Non-zoned students without siblings:
 - a. Within District first, then
 - b. Out of District

Appendix B – Planned Section Counts

School Name	GE/ICT				
	Pre-K	Kindergarten	Grades 1-5	Grades 6-8	Self-Contained ¹
New School	-	3	2-3	-	1
P.S. 127 Aerospace Science Magnet	4	4-5	4-5	4-5	4
P.S. 149 Christa McAuliffe	-	7	7	-	1
P.S. 228 Early Childhood Magnet School of the Arts	2	3	3	-	1
P.S. 148 Queens	2	8	6	-	3

(1) As long as there is sufficient space in the building, zoned schools will be responsible for serving all of their zoned students with IEPs as well as any other students assigned to special programs or classes.

Appendix C – Planned Average Class Sizes

School Name	GE/ICT				
	Pre-K	Kindergarten	Grades 1-5	Grades 6-8	Self-Contained
New School	-	25	30	-	12
P.S. 127 Aerospace Science Magnet	18	25	30	30	12
P.S. 149 Christa McAuliffe	-	25	30	-	12
P.S. 228 Early Childhood Magnet School of the Arts	18	25	30	-	12
P.S. 148 Queens	18	22	27	-	12

Appendix D – Zone Retention and Enrollment Rates

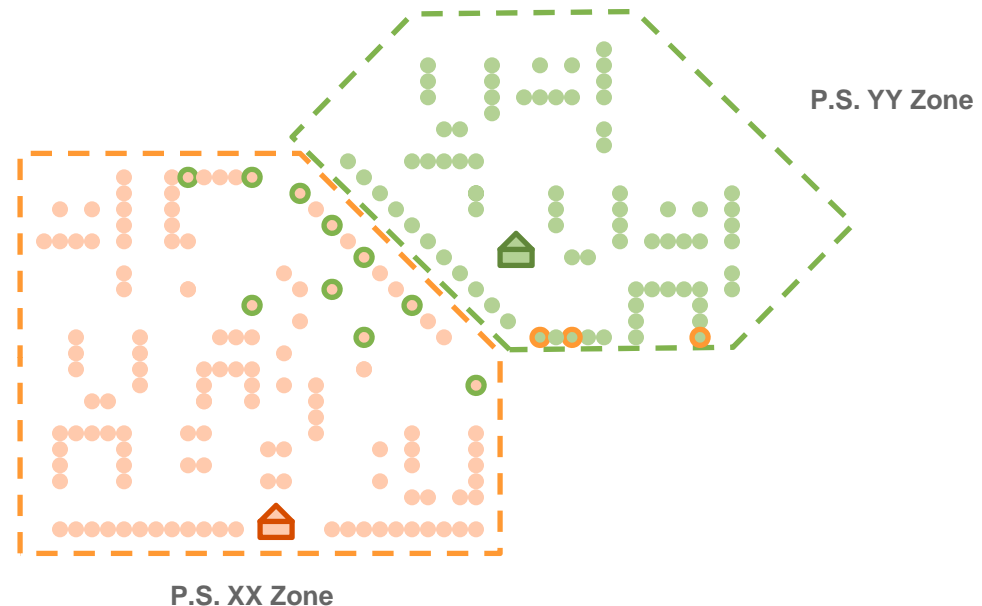
School Name	Capped	K-Waitlist	Current Zone Retention Rate	Planned Zone Retention Rate	Current Zoned Enrollment Rate	Planned Zoned Enrollment Rate
New School	New School	New School	New School	90%	New School	95%
P.S. 127 Aerospace Science Magnet	No	No	74%	90%	82%	95%
P.S. 149 Christa McAuliffe	No	No	63%	85%	64%	90%
P.S. 228 Early Childhood Magnet School of the Arts	No	Yes; 2011-12			61%	90%
P.S. 148 Queens	No	No	69%	69%	73%	73%

- (1) The current rates are based on the 2011-12 Audited Register.
- (2) Planned rates are based on various factors, including but not limited to the historical number of zoned Kindergarten students that were waitlisted or overflowed due to capping as well as an assumed reduction in the number of out-of-zoned enrollment.

Appendix E – Projections Methodology

- Zoned to PS XX and attends.
- Zoned to PS XX but does not attend.
- Not zoned to PS XX but attends.

Metric	Definition	Value
Zone Size:	# of students that live in PS XX zone	● +
Zone Retention Rate:	% of zoned students that attend PS XX	$\frac{\text{orange dot}}{(\text{orange dot} + \text{green circle})}$
Zoned Enrollment Rate:	% of total enrollment that resides in zone	$\frac{\text{orange dot}}{(\text{orange dot} + \text{orange circle})}$



Example, Part I: There are currently 100 kindergarten students living in the P.S. XX zone. Due to the lack of a Gifted & Talented program, about 10 students on average have chosen to attend P.S. YY instead. What is the Zoned Retention Rate for P.S. XX?

$$\text{Zoned Retention Rate} = \text{Zoned Students that Attend} \div \text{Zone Size} = (100-10) \div 100 = 90\%$$

Zone Size: 100
 Zoned Enrollment Rate: 90%
 Total Zoned Enrollment: 90