



Office of District Planning

*Rezoning Presentation to
CEC 31*



**Department of
Education**

Carmen Fariña, Chancellor

May 5, 2014

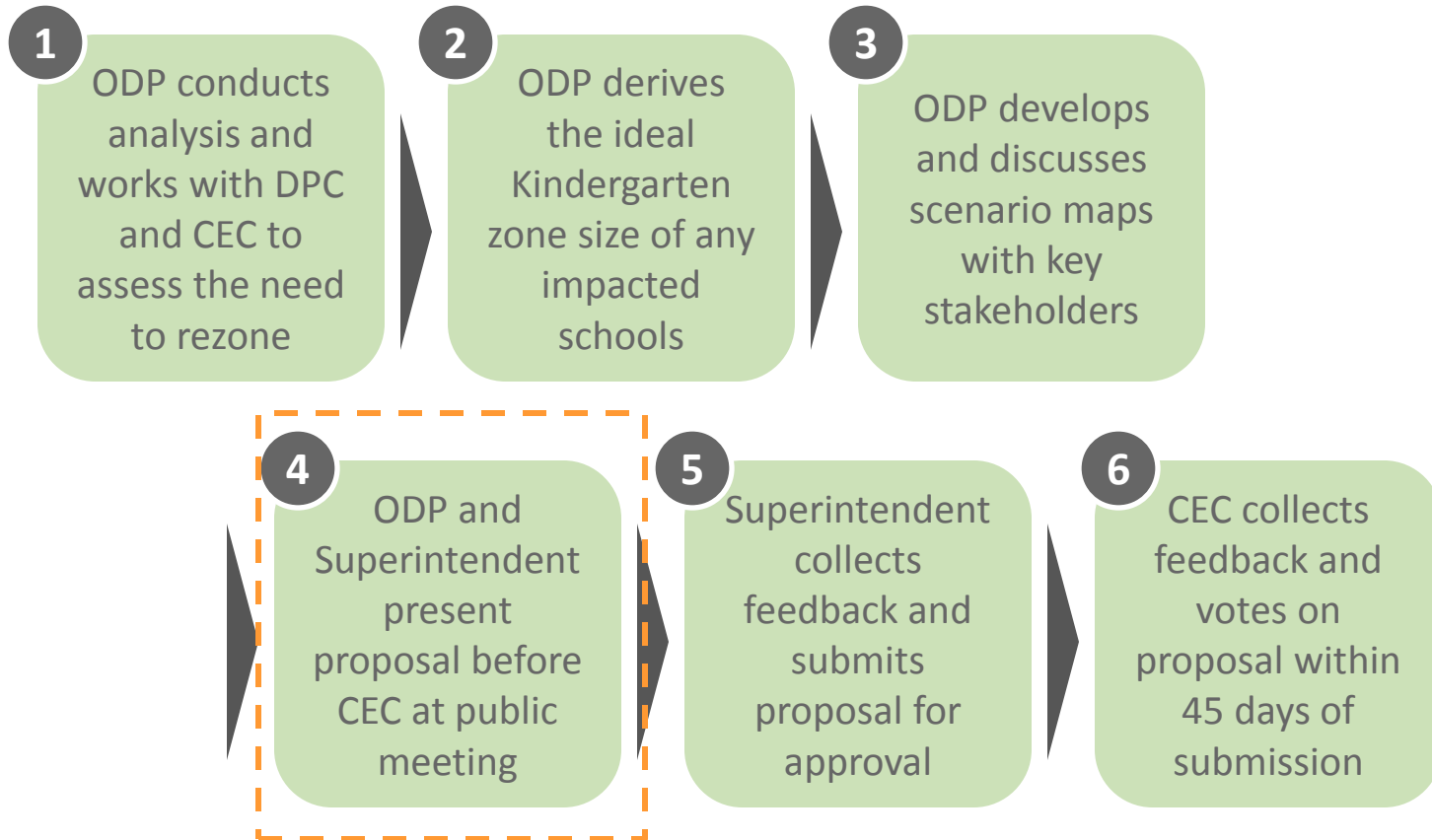
Table of Contents

	Slide #
I. Rationale for Rezoning	3
II. Overview of the Rezoning Process	4
III. Guiding Policies and Principles	5
IV. Methodology	6-7
a. Determining the Target K Zone Size	
b. Determining the Zone Lines	
V. Schools Affected by Rezoning	8
VI. Impact of Rezoning	9-10
VII. Proposed Zone Lines	11
VIII. Contact Information for Comments	12
IX. Appendix	13-17
a. Admissions Process	
b. Planned Section Counts	
c. Planned Average Class Sizes	
d. Zoned Percentage Rates	

Rationale for Rezoning

- To create a zone for a new elementary school, when it opens in new building R062, on 644 Bloomingdale Road, for the 2015-2016 school year.
- To alleviate PS 3's zone so that the school will eventually no longer need the capacity of the annex at Mount Loretto.
- To include some students in the new zone from PS 6 and PS 56 who live closest to the new building.

Overview of Rezoning Process



Guiding Policies and Principles

- Pending approval by the CEC, the proposed changes would take effect for the 2015-2016 academic year.
- Pending approval by the CEC, the proposed changes would only impact incoming Kindergarten or new students to the system. All currently enrolled students may remain in their school until graduation.
- Sibling priority, as determined by CEC 31, may be applicable.
- See Appendix A for the admissions process as outlined in the Chancellor's regulation A-101.
- The Office of Pupil Transportation (OPT) will follow standard procedure to determine bus service eligibility of general education students, as outlined by Chancellor's regulation A-801.



Methodology – Determining the Target K Zone Size

Seat Supply: What is the capacity of each school?

Specifically, how many instructional sections can each building accommodate?

We assess capacity based on:

- The number of full-size classrooms available in the building;
- The number of cluster rooms to which a school is entitled; and
- Historical enrollment increases and decreases at each grade level.

Seat Demand: How many students do we anticipate?

We assess demand – both from inside and outside the zone – based on:

- The historical number of Kindergarten students living in the zone;
- Historical Kindergarten waitlists and capping activity;
- Historical average class sizes;
- Historical zone retention rates (the percent of students who live in the zone and attend their zoned school);
- Historical zone enrollment rates (the percent of enrolled students who are also zoned to that school); and
- Anticipated Kindergarten growth, based on current/future housing developments.



Methodology – Determining the Zone Lines

To the extent possible, we draw zone lines in a way that:

- Achieves the targeted Kindergarten zone size for all affected schools;
- Addresses concerns of the local community;
- Accounts for residential construction and population growth within the affected areas;
- Avoids forcing students to cross geographic barriers (e.g. highways , district lines, etc.);
- Centrally locates the school within the zone;
- Minimizes the distance students must travel to attend their zoned school; and
- Maintains the diversity of schools.



Schools Affected by Rezoning

In the current year (2013-2014):

DBN	School Name	Grade Span	Total Enrollment ¹	Total Org Capacity ²	Utilization %
New School at R062	New School at R062	-	-	-	-
31R056	P.S. 56 The Louis Desario School	PK-5	723	699	103%
31R003	P.S. 003 The Margaret Gioiosa School	PK-5	1,019	794	128% ³
31R006	P.S. 6 Corporal Allan F. Kivlehan School	PK-5	757	622	122%



**Department of
Education**

Carmen Fariña, Chancellor

(1) Based on Audited Register as of October 31, 2013

(2) Based on 2012-2013 Blue Book Capacity

(3) Includes PS 3's annex at Mount Loretto, with a capacity of 220 seats.

Impact of Rezoning – Kindergarten Zone Size

School Name	Current K Zone Size ¹	Planned K Zone Size	Change in K Zone Size
New School at R062	-	75-85	-
P.S. 56 The Louis Desario School	93	80-90	↓
P.S. 003 The Margaret Gioiosa School	123	60-70	↓
P.S. 6 Corporal Allan F. Kivlehan School	112	95-105	↓

Impact of Rezoning – Total Enrollment & Utilization

School Name	Planned				Change
	Grade Span at Scale	Total Enrollment ¹	Total Org Capacity ²	Utilization Rate	
New School at R062	PK-5	450-550	444 ³	105%-115%	-
P.S. 56 The Louis Desario School	PK-5	610-710	699	90%-100%	↓
P.S. 003 The Margaret Gioiosa School	PK-5	560-660	574 ⁴	100%-110%	↓
P.S. 6 Corporal Allan F. Kivlehan School	PK-5	630-730	622	105%-115%	↓

(1) See appendix for assumed number of sections and average class sizes used to derive total enrollment.

(2) Based on 2012-2013 Blue Book Capacity

(3) Preliminary capacity based on the School Construction Authority's (SCA) building completion report. Capacity is subject to change.

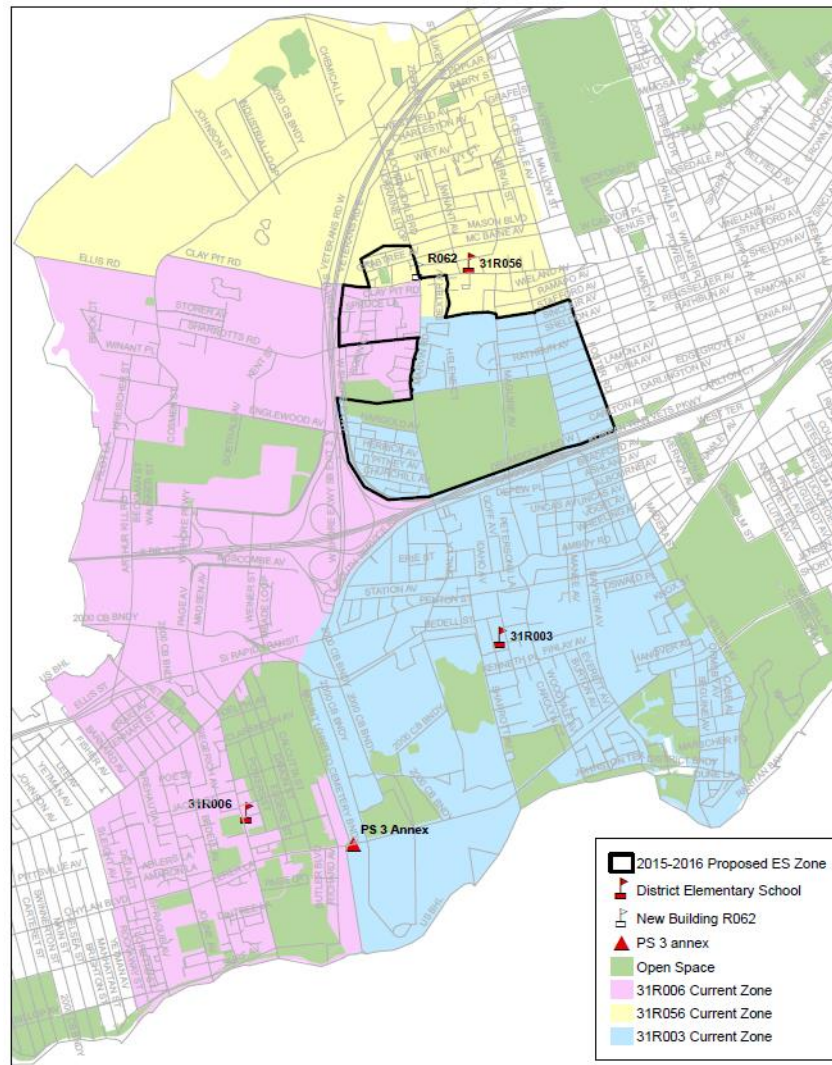
(4) Planned capacity does not include PS 3's annex at Mount Loretto.



**Department of
Education**

Carmen Fariña, Chancellor

Proposed Zone Lines



(1) All zone lines run down the center of the street unless otherwise specified.

Contact Information and Next Steps

- Community sends feedback to Superintendent, CEC, and ODP
- If there are changes, Superintendent and ODP re-present the proposal
- The CEC is expected to vote on June 2, 2014

Community
Superintendent
Jessica Jenkins

Phone: (718) 420-5667
Email: JJenkins2@schools.nyc.gov
Subject: D31 Zoning

CEC 31
Community
Education Council

Email: CEC31@schools.nyc.gov
Subject: D31 Zoning

ODP
Office of District
Planning

Email: StatenIslandZoning@schools.nyc.gov
Subject: D31 Zoning

Appendix A – Admissions Process¹

Students will be enrolled in New York City elementary schools by the following priority:

- 1 - Zoned students whose verified siblings are pre-registered or enrolled at the time of application submission and will be enrolled in grades K-5 in the school at the start of the following school year
- 2 - Zoned students other than those in (1) above applying to the zoned school
- 3 - Students whose verified siblings are pre-registered or enrolled at the time of application submission and will be enrolled in grades K-5 in the school at the start of the following school year who are not zoned to the school,
 - a. Within District first, then
 - b. Out of District
- 4 - Students currently attending the school's pre-kindergarten program who reside outside the school's zone, *without* a sibling who will be in grades K-5 at the school in the following school year,
 - a. Within District first, then
 - b. Out of District
- 5 - Students other than those in (3a) and (4a) above who are residents of that district
- 6 - Students other than those in (3b) and (4b) who are residents of another district

(1) Please refer to Chancellor's Regulation A-101 for further information.

Appendix B – Planned Section Counts

GE/ICT

School Name	Pre-Kindergarten ¹	Kindergarten	Grades 1-5	Self-Contained
New School at R062	1	3	3	3
P.S. 56 The Louis Desario School	4	4	3-4	4
P.S. 003 The Margaret Gioiosa School	3	4	4	4
P.S. 6 Corporal Allan F. Kivlehan School	2	4	4	4

- (1) Pre-Kindergarten is a program that can be offered both half-day and full-day. Planned section counts represent the full-day equivalency and are subject to change.

Appendix C – Planned Average Class Sizes

GE/ICT¹

School Name	Pre-Kindergarten	Kindergarten	Grades 1-5	Self-Contained
New School at R062	18	24	25	12
P.S. 56 The Louis Desario School	18	21	27	12
P.S. 003 The Margaret Gioiosa School	18	21	23	12
P.S. 6 Corporal Allan F. Kivlehan School	18	23	24	12

Appendix D – Zone Retention and Enrollment Rates

School Name	Capped	K-Waitlist	Zone Retention Rate for Kindergarten		Zone Enrollment Rate for Kindergarten	
			Current ¹	Planned	Current	Planned ²
New School at R062	-	-	-	90%-100%	-	90%-100%
P.S. 56 The Louis Desario School	-	-	86%	85%-95%	95%	90%-100%
P.S. 003 The Margaret Gioiosa School	-	-	93%	90%-100%	85%	80%-90%
P.S. 6 Corporal Allan F. Kivlehan School	-	-	85%	80%-90%	95%	80%-90%

- (1) The current rates (both zone retention and zone enrollment) are based on the 2013 Audited Register as of October 31, 2013.
- (2) Planned zone enrollment is based on special programs, such as gifted & talented and Horizon, that drive out of zone enrollment.

Appendix E – Demographic Changes

School Name	Zone Percent Minority ¹	
	Current	Planned
New School at R062	-	15%-25%
P.S. 56 The Louis Desario School	30%	25%-35%
P.S. 003 The Margaret Gioiosa School	15%	10%-20%
P.S. 6 Corporal Allan F. Kivlehan School	20%	15%-25%



(1) Zone Percent Minority figures are based on the ethnicity of zoned Kindergarten students from the 2013 Audited Register as of October 31, 2013. Students identified as “White – not of Hispanic origin” are not counted as minority.