



Office of District Planning

*Rezoning Presentation to
CEC 31*



**Department of
Education**

Carmen Fariña, Chancellor

September 21st, 2016

Table of Contents

	Slide #
I. Rationale for Rezoning	3
II. Overview of the Rezoning Process	4
III. Guiding Policies and Principles	5
IV. Methodology	6-7
a. Determining the Target K Zone Size	
b. Determining the Zone Lines	
V. Schools Affected by Rezoning	8
VI. Proposed Zone Lines	9
VII. Impact of Rezoning	10-12
VIII. Contact Information for Comments	13
IX. Appendices	14-20
a. Admissions Process	
b. Planned Section Counts	
c. Planned Average Class Sizes	
d. Planned Zone Retention and Enrollment Rates	
e. Zone Demographics	



Rationale for Rezoning

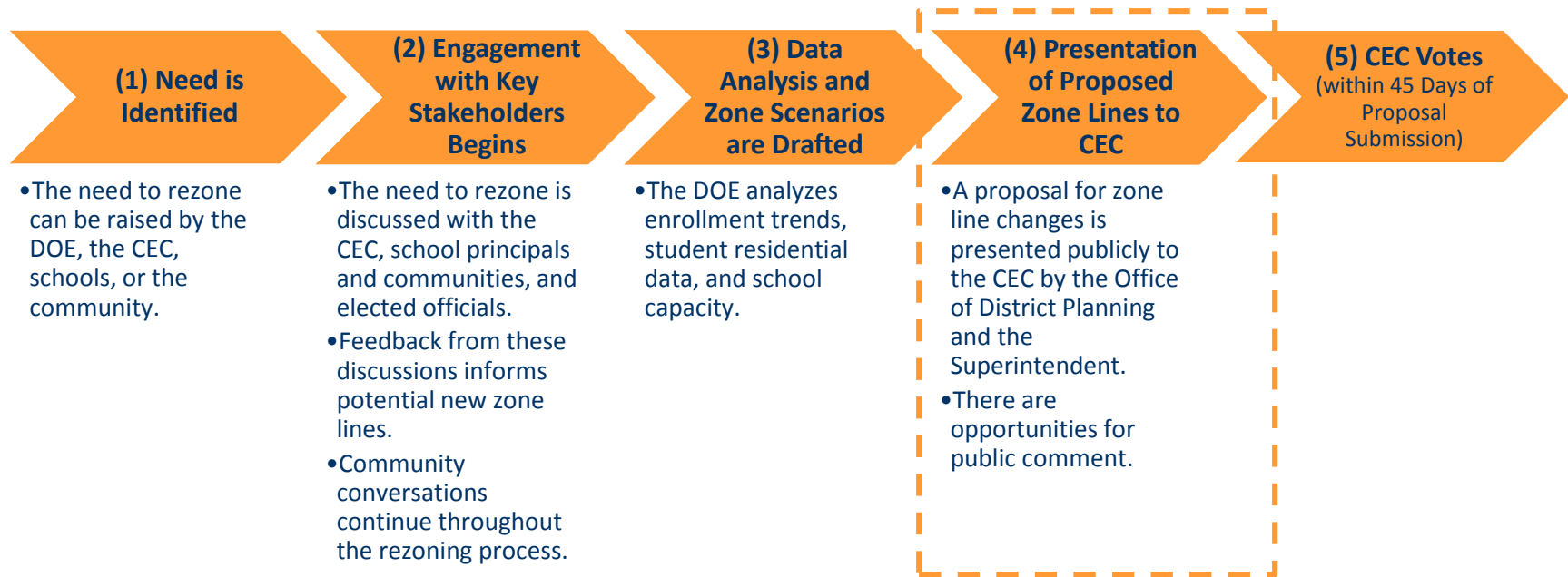
P.S. 68: The Port Richmond School for Visionary Learning (31R068, “P.S. 68”) is a new district elementary school that opened this fall in building R066 (“R066”) with un-zoned admissions serving students in kindergarten.

- R066 also currently houses a District 31 Pre-Kindergarten Center.

The DOE is proposing to create a zone be created for P.S. 68 in order to:

- Alleviate overcrowding at neighboring elementary schools, particularly P.S. 19, P.S. 20 and P.S. 21 and therefore improve learning conditions.
- Reduce the need for surrounding elementary schools to cap and overflow students.
- Facilitate the eventual removal of TCUs at P.S. 19.

Overview of Rezoning Process & Timeline



Timeline for 2017 Implementation



Guiding Policies and Principles

- Pending approval by the CEC, all proposed changes would take effect for the 2017-2018 school year.
- The proposed changes would only impact incoming kindergarten students or new students to the system. All currently enrolled students may remain in their school until graduation.
- Sibling grandfathering for pre-kindergarten and kindergarten students will be applicable.
- All impacted schools will continue to admit students according to Chancellor's regulation A-101.
- The Office of Pupil Transportation (OPT) will follow standard procedure to determine bus service eligibility of general education students, as outlined by Chancellor's regulation A-801.

Methodology – Determining the Target K Zone Size

Seat Supply: What is the capacity of each school?

Specifically, how many instructional sections can each building accommodate?

We assess capacity based on:

- The number of full-size classrooms available in the building;
- The number of cluster rooms to which a school is entitled; and
- Historical enrollment increases and decreases at each grade level.

Seat Demand: How many students do we anticipate?

We assess demand – both from inside and outside the zone – based on:

- The historical number of kindergarten students living in the zone;
- Historical kindergarten waitlists and capping activity;
- Historical average class sizes;
- Historical zone retention rates (the percent of students who live in the zone and attend their zoned school);
- Historical zone enrollment rates (the percent of enrolled students who are also zoned to that school); and
- Anticipated kindergarten growth, based on current/future housing developments.



Methodology – Determining the Zone Lines

To the extent possible, we draw zone lines in a way that:

- Achieves the targeted kindergarten zone size for all affected schools;
- Addresses concerns of the local community;
- Accounts for residential construction and population growth within the affected areas;
- Avoids forcing students to cross geographic barriers ;
- Minimizes the distance students must travel to attend their zoned school; and
- Maintains the diversity of schools.

School Affected by Rezoning

In the current 2016-2017 school year:

DBN	School Name	Grade Span	Total Enrollment ¹	Target Building Capacity ²	Bldg Utilization %
31R019	P.S. 19 The Curtis School	K-5*	677	513	132%
31R020	P.S. 20 Port Richmond	K-5	486	289	168%
31R021	P.S. 21 Margaret Emery-Elm Park	K-5	398	348	114%
31R022	P.S. 22 Graniteville	K-5*	1,053	967	109%
31R068	P.S. 68 The Port Richmond School for Visionary Learning	K	50	314	45% ³

* Includes a Pre-Kindergarten program

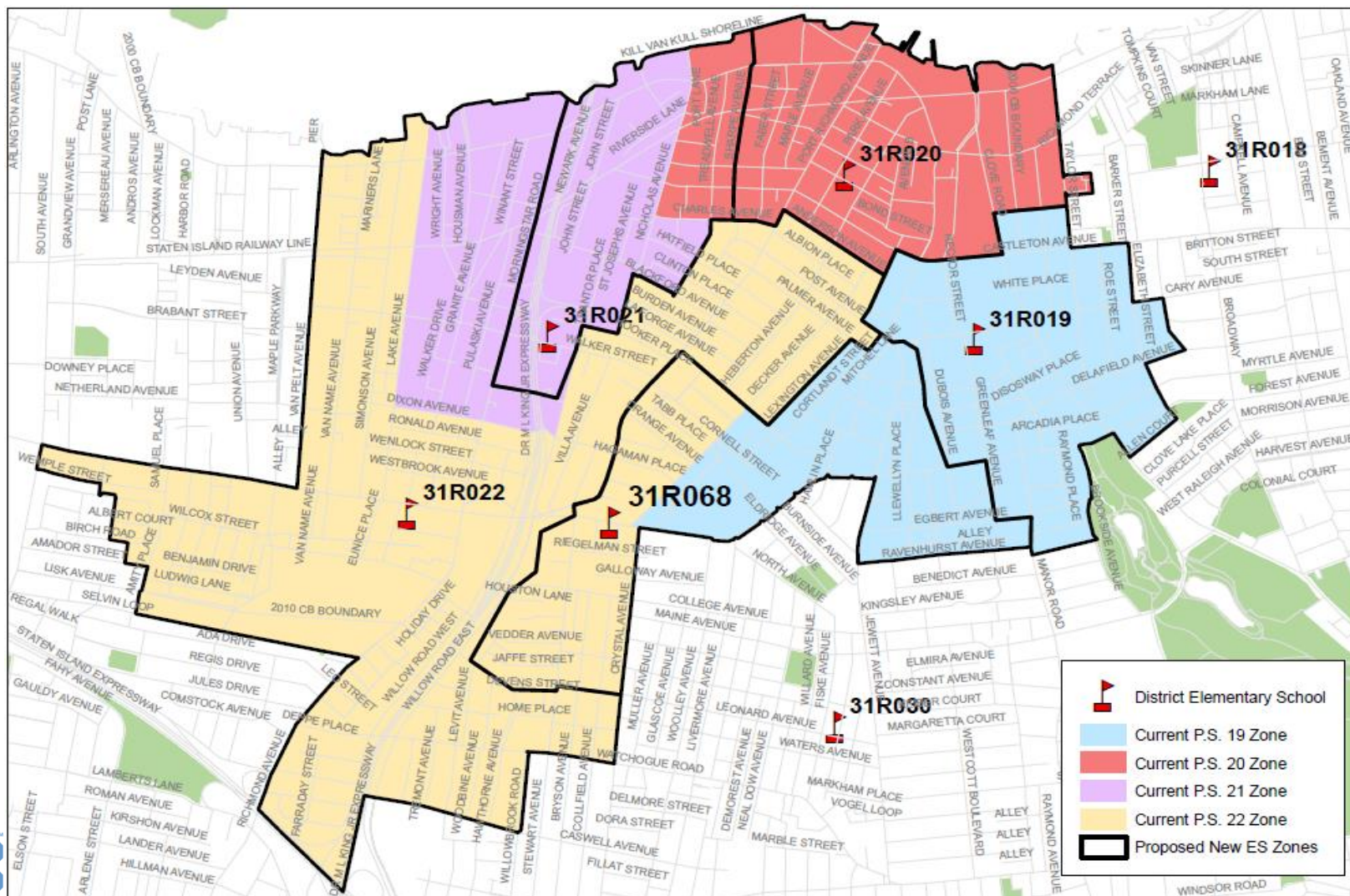
- (1) Based on 2016-2017 budget register projections
- (2) Based on 2014-2015 Blue Book Capacity
- (3) Includes enrollment from P.S. 68 and Pre-K center in R066



**Department of
Education**

Carmen Fariña, Chancellor

Proposed Zone Lines for 2017-2018 Implementation



Impact of Rezoning: Kindergarten Zone Size

School Name	Current K Zone Size ¹	Planned K Zone Size	Change in K Zone Size
P.S. 19 The Curtis School	111	80-90	↓
P.S. 20 Port Richmond	105	85-95	↓
P.S. 21 Margaret Emery-Elm Park	69	55-65	↓
P.S. 22 Graniteville	184	180-190	No change
P.S. 68 The Port Richmond School for Visionary Learning	-	55-65	-

¹ Based on 2015-2016 Audited Register.

Impact of Rezoning – Total Enrollment & Utilization

School Name	Planned				
	Grade Span at Scale	Total Enrollment ¹	Target Building Capacity ²	Utilization Rate	Change
P.S. 19 The Curtis School	K-5*	540 - 570	513	105% - 111%	↓
P.S. 20 Port Richmond	K-5	410 - 440	289	142% - 152%	↓
P.S. 21 Margaret Emery-Elm Park	K-5*	350 - 380	348	101%- 109%	↓
P.S. 22 Graniteville	K-5	1,035 – 1,065	967	108%- 111%	No Change
P.S. 68 The Port Richmond School for Visionary Learning	K-5*	340 - 370	314 ³	108% - 118%	-

* Includes a Pre-Kindergarten program

- (1) See appendix for assumed number of sections and average class sizes used to derive total enrollment.
- (2) Based on 2014-2015 Blue Book Capacity
- (3) Preliminary capacity provided by the School Construction Authority (SCA). Capacity is subject to change.



**Department of
Education**

Carmen Fariña, Chancellor

Contact Information and Next Steps

Community
Superintendent

Email: ALodico@schools.nyc.gov
Subject: District 31 Rezoning

CEC
Community
Education Council

Email: CEC31@schools.nyc.gov
Subject: District 31 Rezoning

ODP
Office of District
Planning

Email: StatenIslandZoning@schools.nyc.gov
Subject: District 31 Rezoning



Department of
Education

Carmen Fariña, Chancellor

Appendix A.1: Admissions Process¹ - Pre-Kindergarten

1. Students residing in the zone, who have a sibling pre-registered or enrolled at the time of application submission and will be enrolled in grades K-5 in the school at the start of the following school year.¹
2. Students residing in the zone, who do not have a sibling at the school.¹
3. Students residing in the district, who have a sibling at the school,
 - a. who have no zoned school or whose zoned school has no pre-K program, then
 - b. who are zoned to a different school which has a pre-K program.
4. Students residing in the borough, who have a sibling at the school.
5. Students residing out-of-borough, who have a sibling at the school.
6. Students residing in the district,
 - a. who have no zoned school or whose zoned school has no pre-K program, then
 - b. who are zoned to a different school which has a pre-K program.
7. Students residing in the borough.
8. Students residing out-of-borough.



Appendix A.2: Admissions Process¹ - Kindergarten

Students will be enrolled in New York City elementary schools by the following priority:

1. Zoned students whose verified siblings are pre-registered or enrolled at the time of application submission and will be enrolled in grades K-5 in the school at the start of the following school year
2. Zoned students other than those in (1) above applying to the zoned school
3. Students whose verified siblings are pre-registered or enrolled at the time of application submission and will be enrolled in grades K-5 in the school at the start of the following school year who are not zoned to the school,
 - a. Within District first, then
 - b. Out of District
4. Students currently attending the school's pre-kindergarten program who reside outside the school's zone, *without* a sibling who will be in grades K-5 at the school in the following school year,
 - a. Within District first, then
 - b. Out of District
5. Students other than those in (3a) and (4a) above who are residents of that district
6. Students other than those in (3b) and (4b) who are residents of another district

Appendix B: Projected Section Counts

GE/ICT

School Name	PK	Kindergarten	Grades 1-5	Self-Contained
P.S. 19	2	3	3	4
P.S. 20	-	2	2	7
P.S. 21	-	2	2	6
P.S. 22	1	7	6	9
P.S. 68	2	2	2	1



Appendix C: Projected Average Class Sizes

School Name	K	Grades 1-5	Self-Contained
P.S. 19	25	26-28	10
P.S. 20	25	28-30	12
P.S. 21	25	25-27	9
P.S. 22	23	25-27	11
P.S. 68	25	25-27	12

Appendix D – Zone Retention and Enrollment Rates

School Name	Capped ¹	K-Waitlist ¹	Zone Retention Rate for Kindergarten		Zone Enrollment Rate for Kindergarten	
			Current ²	Projected	Current	Projected
P.S. 19	Y		82%	80%-90%	88%	85%-95%
P.S. 20	Y	Y	51%	55%-65%	84%	85%-95%
P.S. 21	Y		65%	65%-75%	71%	85%-95%
P.S. 22			69%	65%-75%	74%	75%-85%
P.S. 68			-	75%-85%	-	75%-85%



(1) In 2015-2016 school year

(2) The current rates (both zone retention and zone enrollment) are based on the 2015-2016 Audited Register

Appendix E.1 : Zone Demographic Changes – Free/Reduced Lunch

School Name	Zone Percent Free & Reduced Lunch ¹	
	Current	Projected
P.S. 19	71%	65%-75%
P.S. 20	83%	80%-90%
P.S. 21	72%	70%-80%
P.S. 22	79%	75%-85%
P.S. 68	-	70%-80%

Appendix E.2: Zone Demographic Changes - Ethnicity

School Name	Zone Percent Non-White ¹	
	Current	Projected
P.S. 19	89%	85%-95%
P.S. 20	89%	85%-95%
P.S. 21	93%	85%-95%
P.S. 22	84%	80%-90%
P.S. 68	-	75%-85%

Appendix E.3: Zone Demographic Changes - ELL

School Name	Zone Percent ELL ¹	
	Current	Projected
P.S. 19	24%	20%-30%
P.S. 20	41%	40%-50%
P.S. 21	20%	15%-25%
P.S. 22	18%	15%-25%
P.S. 68	-	15%-25%



¹Zone Percent ELL

**Department of
Education**

Carmen Fariña, Chancellor

Appendix E.4: Zone Demographic Changes - SPED

School Name	Zone Percent IEP ¹	
	Current	Projected
P.S. 19	16%	10%-20%
P.S. 20	28%	25%-35%
P.S. 21	28%	20%-30%
P.S. 22	22%	15%-25%
P.S. 68	-	20%-30%



¹Zone Percent IEP

**Department of
Education**

Carmen Fariña, Chancellor