



Presentation to CEC 31: Proposed Rezoning for New P.S. 5 Addition

Office of District Planning
October 28, 2024

Agenda

- District 31 Seat Need and 2025-2026 P.S. 5 Addition
- Rezoning Process Overview
- Frequently Asked Questions
- P.S. 5 Elementary School Rezoning Proposal & Impacts
- Discussion, Questions, & Feedback
- Next Steps and Contact Information
- Appendix

District 31 Seat Need and 2025-2026 P.S. 5 Addition

District 31 Seat Need

- Elementary school overcrowding continues to be a challenge across Staten Island.
- Across District 31, there is a deficit of approximately 2,285 elementary school seats.¹
- Elementary schools in District 31 have an average utilization rate of approximately 114%.¹

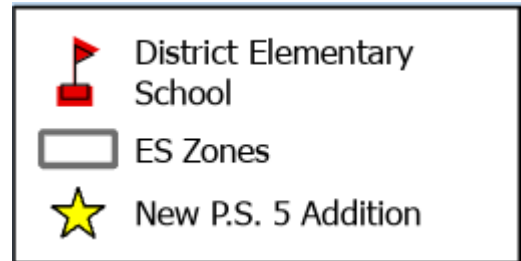
1. Seat deficit and utilization are based on 2023-2024 Blue Book for capacity and 2023-2024 Audited Register for enrollment

New Addition: P.S. 5



- There is a new addition opening at P.S. 5 in the 2025-2026 school year that will help address seat deficits for a portion of the South Shore.
- The P.S. 5 addition will add **290 seats** and will include a cafeteria, library, gymnasium, and designed specialty rooms.

P.S. 5 and Neighboring Schools



Rezoning Process Overview

Rezoning Process Overview

- Rezoning is the process of changing existing school zone lines and creating new zones, governed by Chancellor's Regulation A-185.
- Rezoning is an important lever for improving educational access and learning conditions.
- We are proposing an elementary school rezoning to take advantage of the new seats created by the P.S. 5 addition and reduce zone sizes at overcrowded schools.
- The Community Education Council (CEC) votes on rezoning proposals for their respective Community School District.

Rezoning Process Overview

- Over the past several months, we analyzed relevant data and engaged with the CEC, school principals and communities, elected officials, and other stakeholders to gather feedback on potential zoning plans for the P.S. 5 addition.
- ODP presented at CEC 31 meetings last April, June, and in early October to share information on the P.S. 5 addition, the rezoning process, and presented a draft rezoning map for feedback.
- We are here tonight to present a rezoning proposal for the P.S. 5 addition for CEC 31 to vote on for implementation in the 2025-2026 school year.

Frequently Asked Questions

Frequently Asked Questions

- Who will the new addition serve?
- Which students will the rezoning impact?
- How will the rezoning impact enrollment at nearby schools?
- How were new zone lines developed?

How will rezonings impact enrollment at nearby schools?

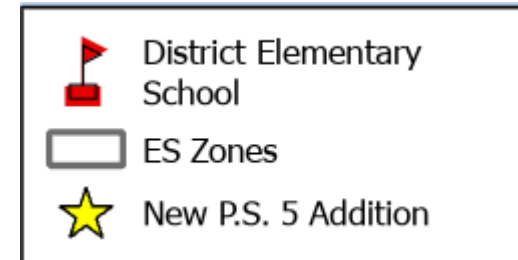
- NYCPS engaged principals of schools near the new P.S. 5 addition, CEC members, and community members in the rezoning planning process. Feedback collected from stakeholders informed zone lines.
- The rezoning scenario we are proposing aims to support schools that have historically experienced overcrowding by decreasing the sizes of these schools' zones with consideration of new class size mandates.

How are new zone lines developed?

- In order to draw new zone lines, NYCPS:
 - Determines the appropriate number of students that should live in each zone (“target zone size”) based on space and historic demand and trends
 - Projects future students residing in both existing housing and upcoming residential construction
- NYCPS draws new zones that:
 - Are projected to contain the target zone size for each school
 - Promote diversity and integration across schools
 - Consider geographic barriers and travel distance

P.S. 5 Elementary School Rezoning Proposal & Impact

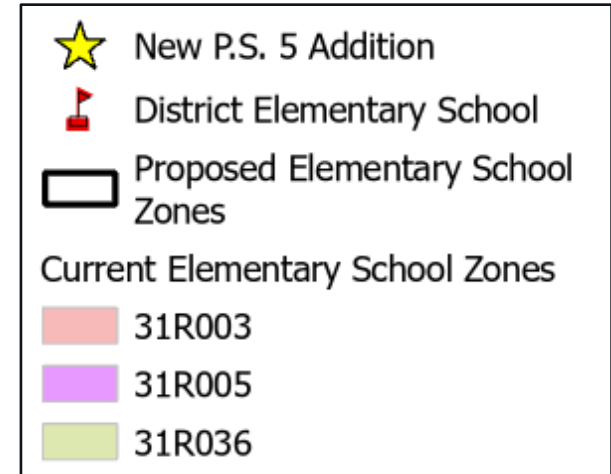
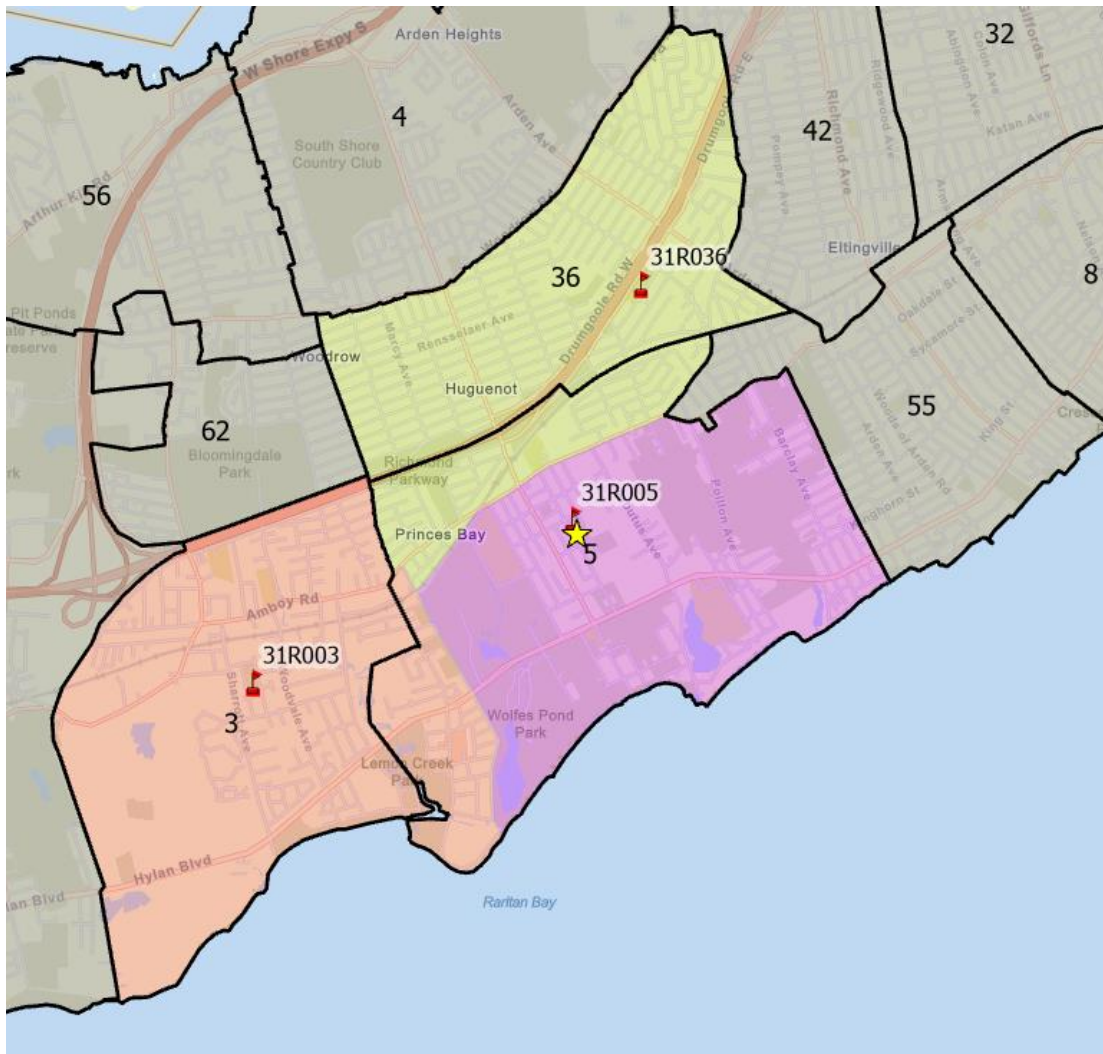
Current District 31 ES Zones: P.S. 5 Area



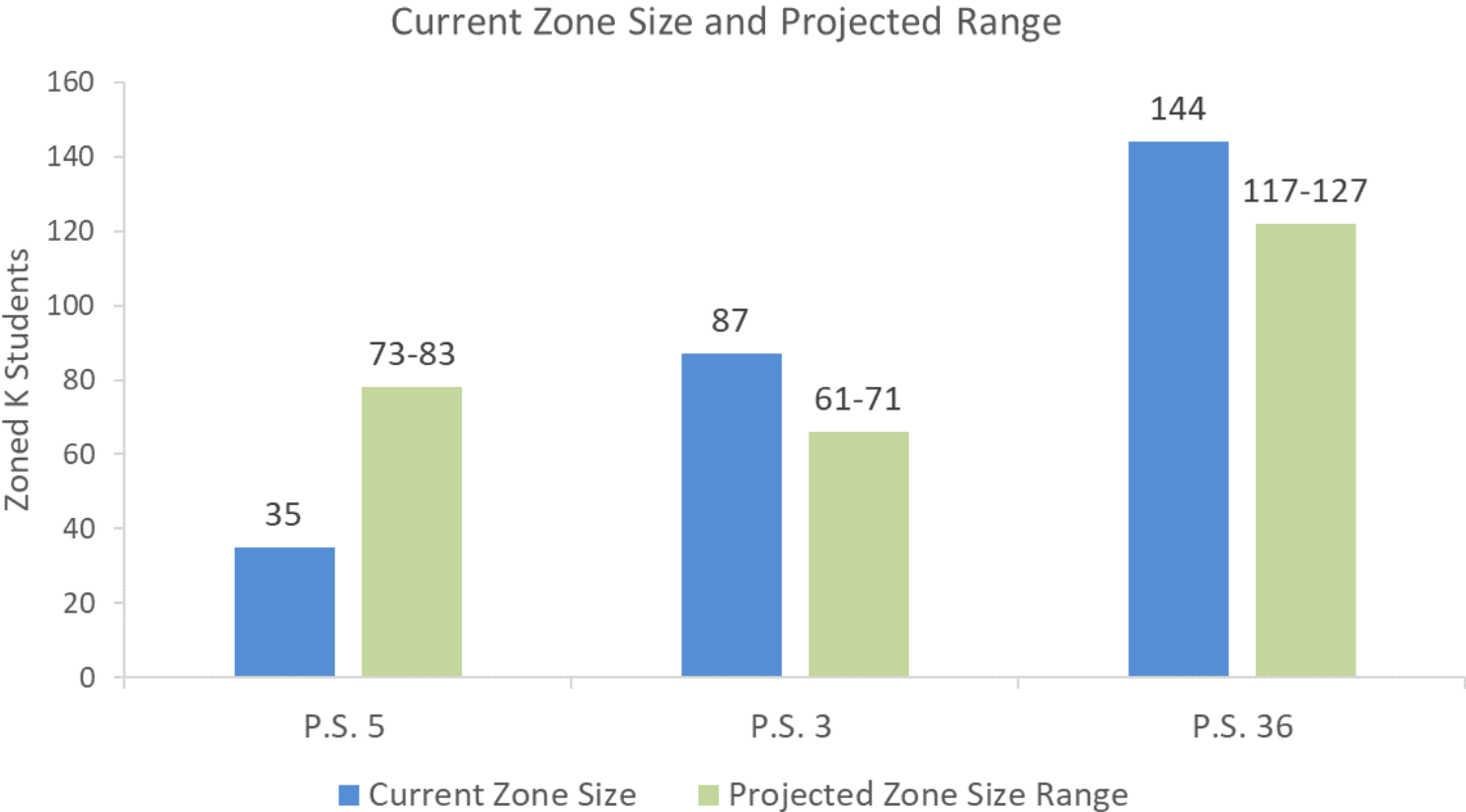
Interpreting Proposed Rezoning Maps

- The **colors** represent existing zones.
- The **thick black** lines represent new proposed zone lines.
- The **green** represents open space.
- Proposed zone lines go down the middle of the street.
- The number of students who live in a zone does not correlate to how large a zone is geographically.
- Every city block is accounted for on the maps and in school zones, not just residential areas.

Proposed P.S. 5 Elementary School Rezoning

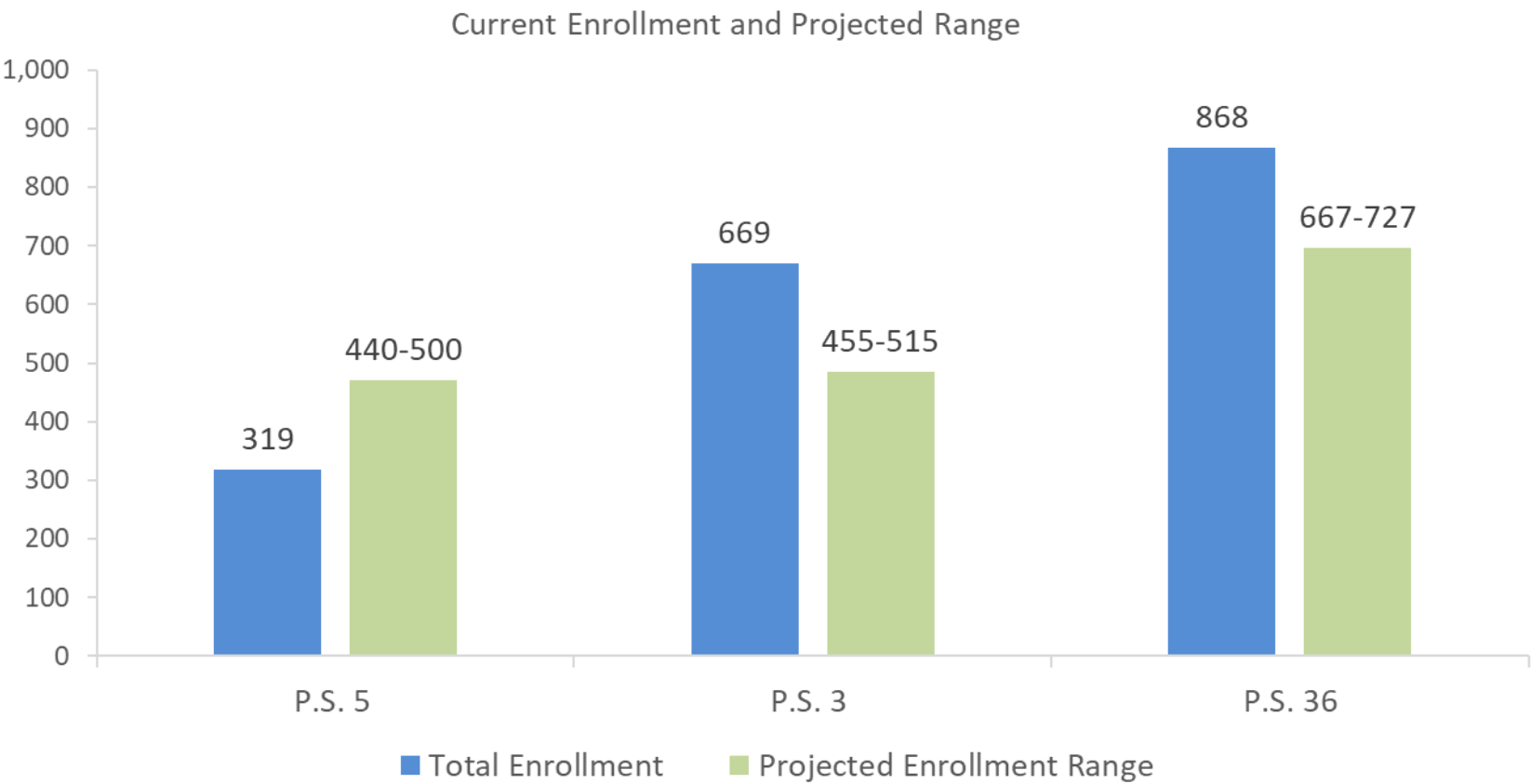


Projected Impact on K Zone Size



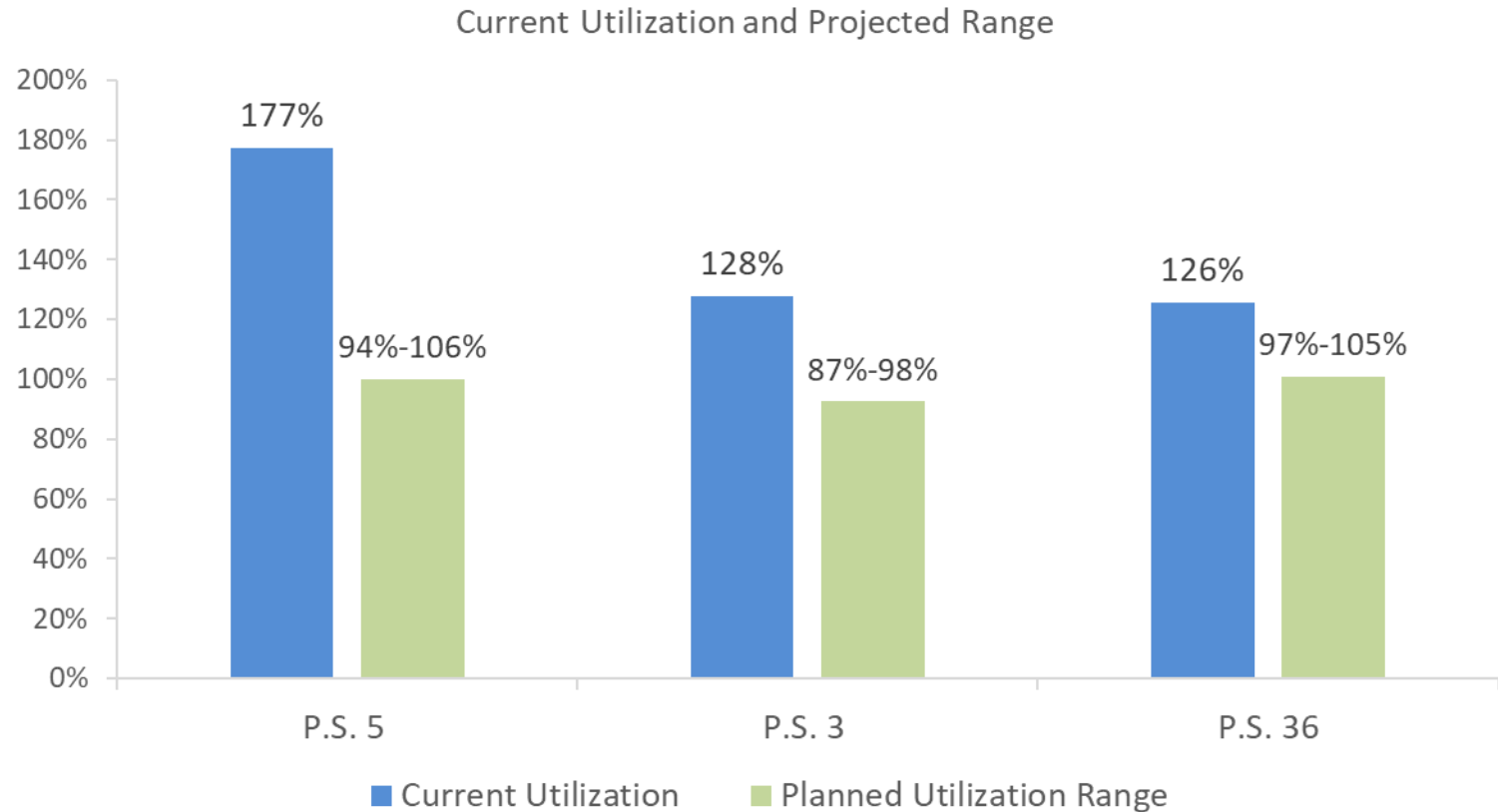
Current K zone size is based on a three-year average (2021-2022, 2022-2023, 2023-2024)

Projected Impact on Total Enrollment



Current enrollment based on ATS enrollment on October 22, 2024; projected enrollment is when rezoning is at scale.

Projected Impact on School Utilization



Current utilization is based on ATS enrollment on October 22, 2024 and 2023-2024 Blue Book capacity; projected utilization is when the rezoning is at scale.

Discussion, Questions, and Feedback

Next Steps and Contact Information

Next Steps

- Tonight, we are presenting the P.S. 5 rezoning proposal to CEC 31.
- We anticipate that CEC 31 will vote on this rezoning at the November 4th, 2024, CEC 31 Calendar Meeting for 2025-2026 implementation.
- This will allow families to be aware of the new zones during the school admissions cycle, which is expected to start on December 10th, 2024, for elementary school.

District Planning Contact Information

Adem Ali, Associate Director of Analytics
aali25@schools.nyc.gov

Max Familian, Senior Director
Mfamilian@schools.nyc.gov

Tori Fenton, Director of Brooklyn North and Staten Island Planning
tfenton@schools.nyc.gov

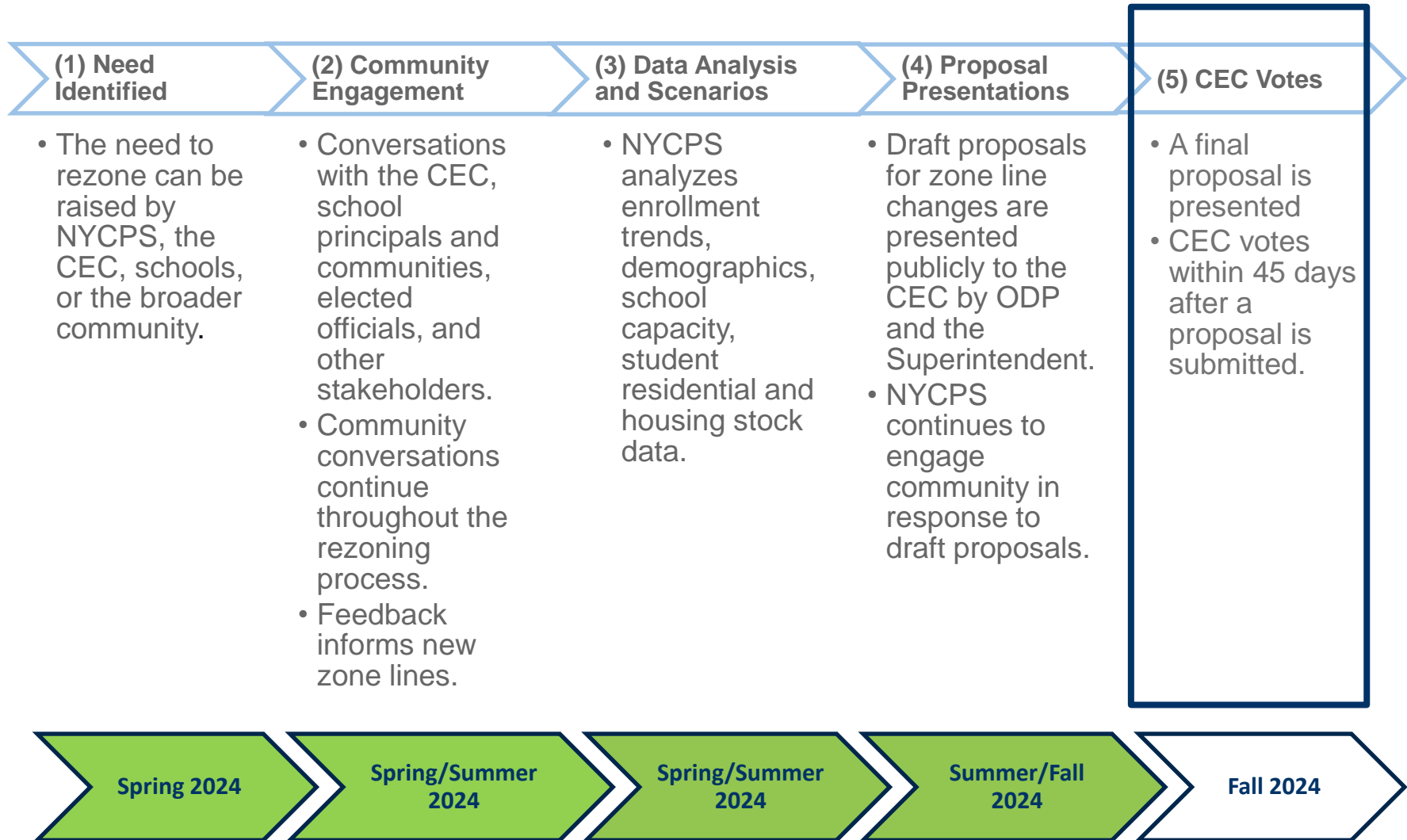
Sam Streed, Director of Analytics
sstreed@schools.nyc.gov

Please also feel welcome to direct any comments and questions
to Statenislandzoning@schools.nyc.gov.

Appendix

Rezoning Timeline

Rezoning Timeline



Appendix

P.S. 5 Elementary Rezoning

Impact on Elementary School Enrollment

DBN	School Name	Current K Enrollment ¹	Projected K Enrollment	Current Total Enrollment ¹	Projected Total Enrollment ²
31R005	P.S. 5	50	73-83	319	440-500
31R003	P.S. 3	101	73-83	669	455-515
31R036	P.S. 36	122	94-104	868	667-727

1. Current enrollment is based on ATS enrollment on October 22, 2024.

2. Projected enrollment is when rezoning is at scale.

Impact on Kindergarten Zone Size

DBN	School Name	Current Zone Size ¹	Projected Zone Size	Change
31R005	P.S. 5	35	73-83	Increase
31R003	P.S. 3	87	61-71	Decrease
31R036	P.S. 36	144	117-127	Decrease

1. Current K zone size based on three-year average (2021-2022, 2022-2023, 2023-2024).

Impact on Elementary School Utilization

DBN	School Name	Capacity ¹	Projected Capacity ²	Current Org Utilization ³	Projected Org Utilization ⁴	Change
31R005	P.S. 5	180	470	177%	94%-106%	Decrease
31R003	P.S. 3	523	523	128%	87%-98%	Decrease
31R036	P.S. 36	691	691	126%	97%-105%	Decrease

1. Current capacity based on 2023-2024 Blue Book.

2. Projected Capacity includes new addition at P.S. 5

3. Current utilization based on ATS enrollment on October 22, 2024 and capacity from 2023-2024 Blue Book.

4. Projected utilization is when rezoning is at scale.

Current Elementary School Section Counts

DBN	School Name	Grades K-5 ¹	Special Classes
31R005	P.S. 5	2	-
31R003	P.S. 3	4	2
31R036	P.S. 36	4-5	2-3

1. 2024-2025 count based on ATS as of October 22, 2025; includes GE/ICT only.

Projected Elementary School Section Counts

DBN	School Name	Grades K-5 ¹	Special Classes
31R005	P.S. 5	4	2
31R003	P.S. 3	4	2
31R036	P.S. 36	5	2-3

1. Includes GE/ICT only.

Current Elementary School Average Class Sizes

DBN	School Name	Grades K-3 ¹	Grades 4-5 ¹	Special Classes
31R005	P.S. 5	24	25	-
31R003	P.S. 3	24	25	9
31R036	P.S. 36	29	32	11

1. Includes GE/ICT Only
2. 2023-2024 Average Class size

Projected Elementary School Average Class Sizes

DBN	School Name	Grades K-5 ¹	Special Classes
31R005	P.S. 5	18-20	6-12
31R003	P.S. 3	18-20	6-12
31R036	P.S. 36	18-20	6-12

1. Includes GE/ICT only.

Impact on Kindergarten Zone Retention and Zone Enrollment

DBN	School Name	Current Zone Retention ¹	Projected Zone Retention	Current Zone Enrollment ¹	Projected Zone Enrollment
31R005	P.S. 5	90%	90%	62%	88%
31R003	P.S. 3	84%	90%	81%	74%
31R036	P.S. 36	76%	77%	91%	94%

1. Based on three-year average (2021-2022, 2022-2023, 2023-2024).

Kindergarten Zone Demographics

Current Ethnicity¹

DBN	School Name	Asian	Black	Hispanic	White	Other
31R005	P.S. 5	9%	<1%	6%	84%	1%
31R003	P.S. 3	10%	4%	11%	73%	2%
31R036	P.S. 36	13%	2%	13%	69%	4%

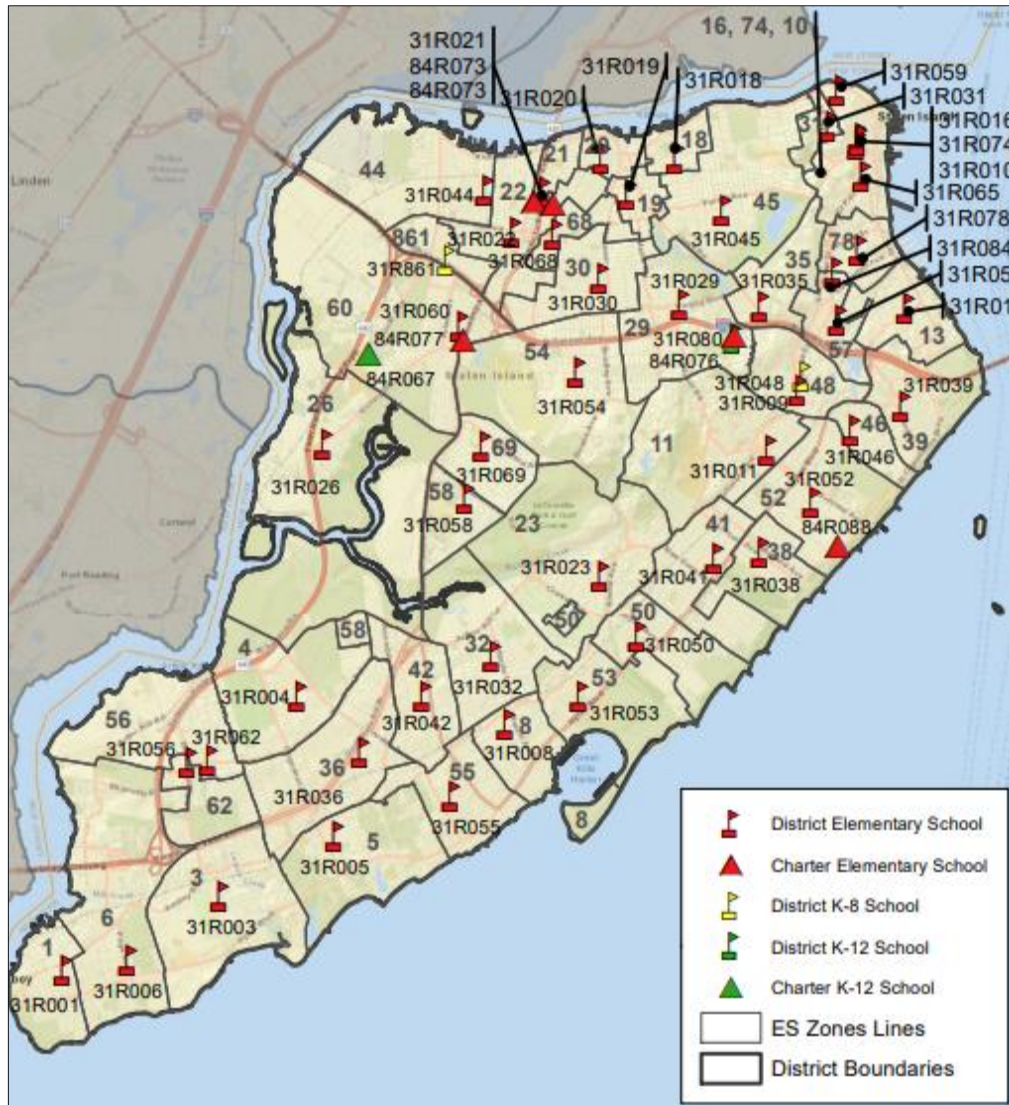
1. Current school ethnicity based on three-year average (2021-2022, 2022-2023, 2023-2024).

Kindergarten Zone Demographics

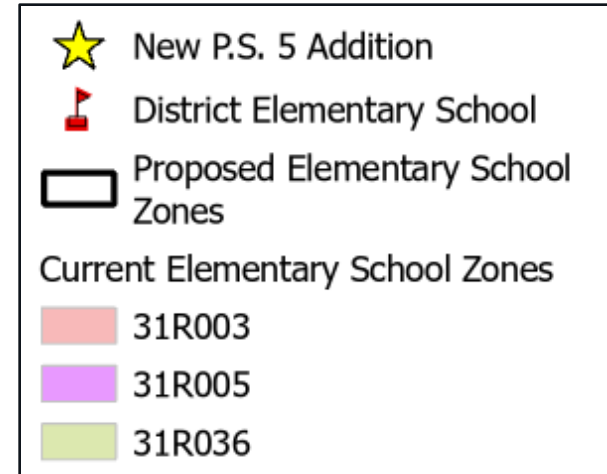
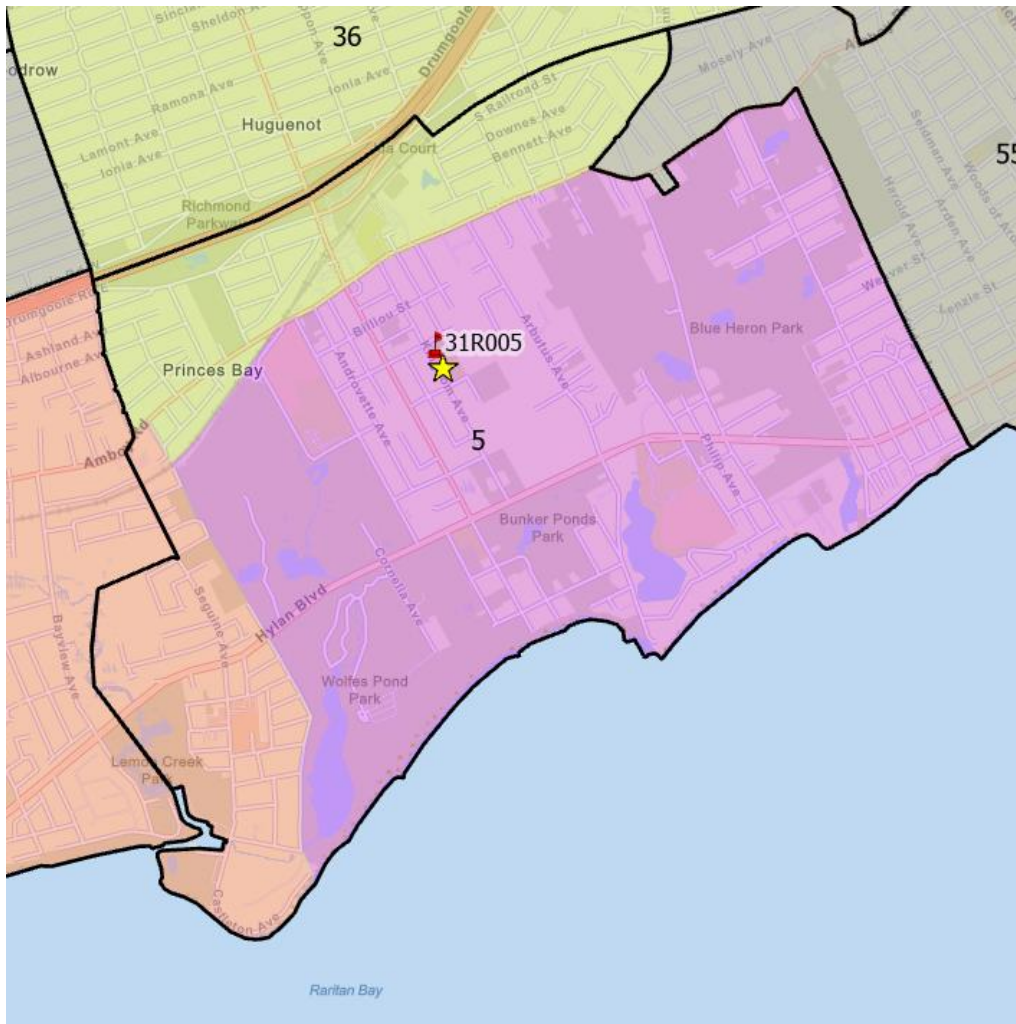
Projected Ethnicity

DBN	School Name	Asian	Black	Hispanic	White	Other
31R005	P.S. 5	5%-15%	0-10%	5%-15%	70%-80%	0-10%
31R003	P.S. 3	5%-15%	0-10%	5%-15%	70%-80%	0-10%
31R036	P.S. 36	10%-20%	0-10%	10%-20%	65%-75%	0-10%

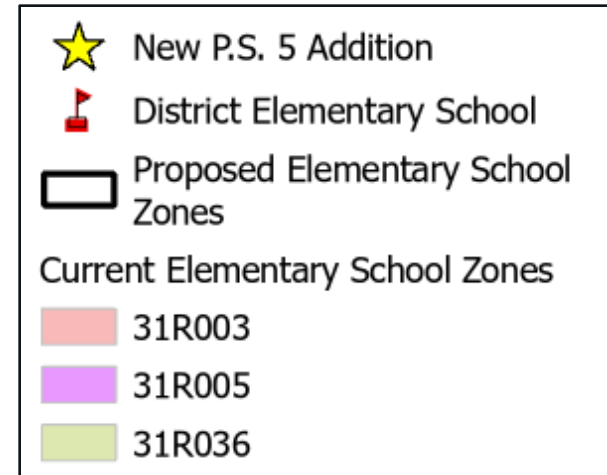
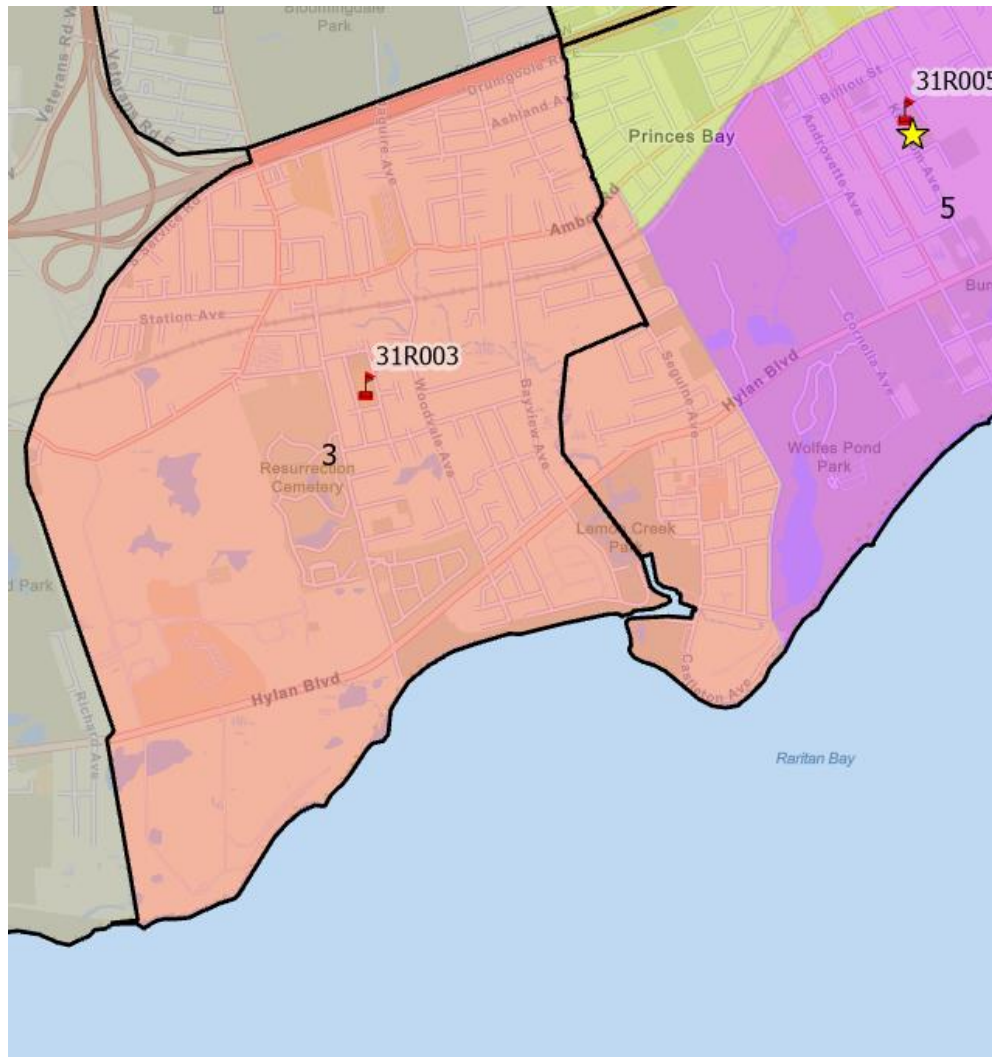
Current District 31 Elementary School Zones



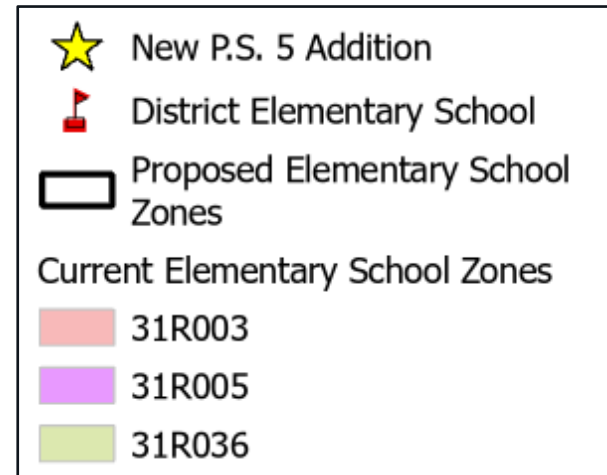
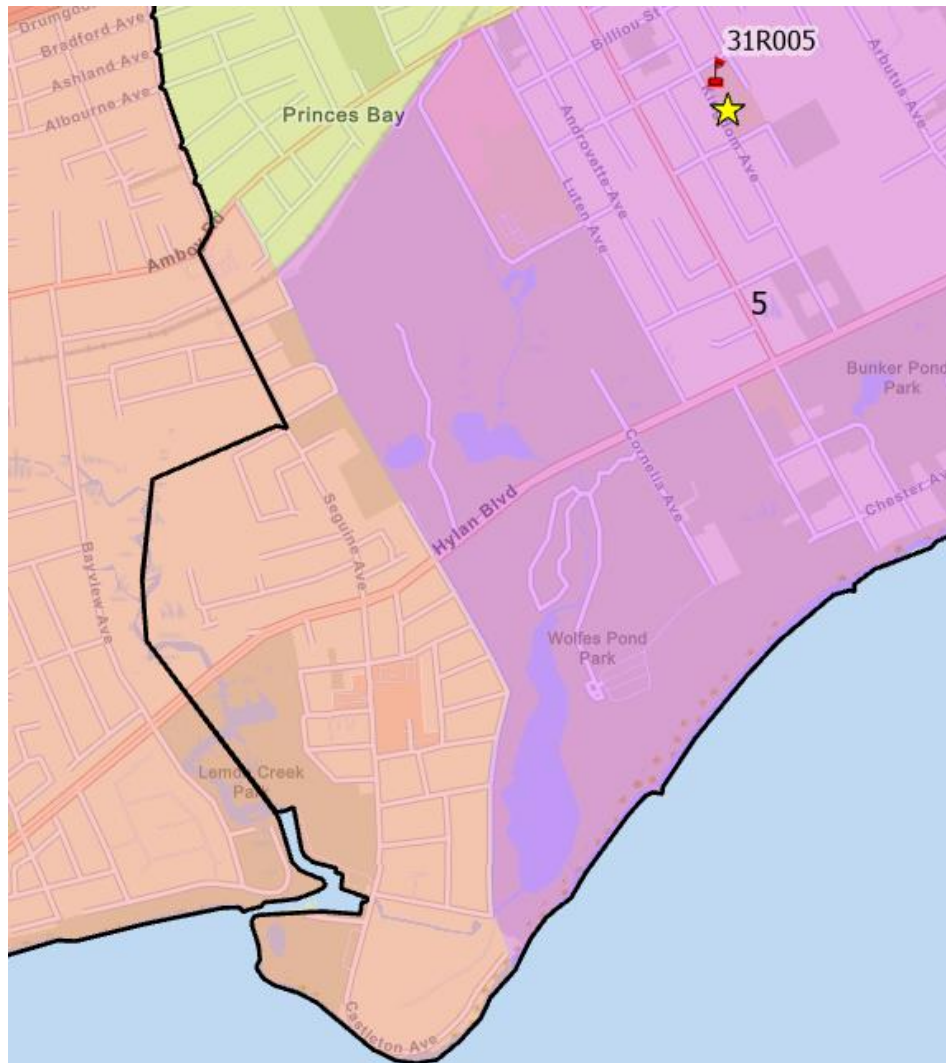
Zoomed Draft Zone Lines: P.S. 5 Proposed Zone



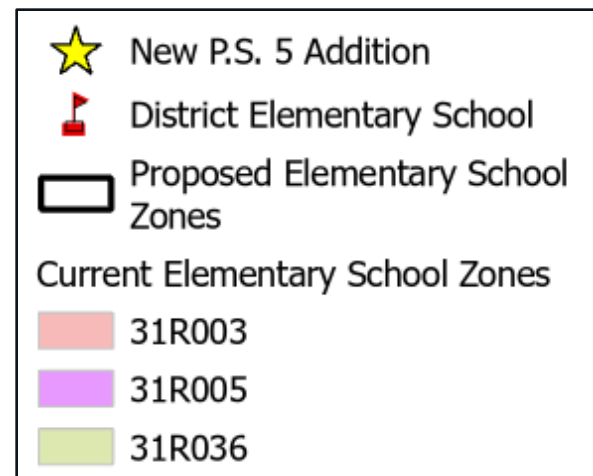
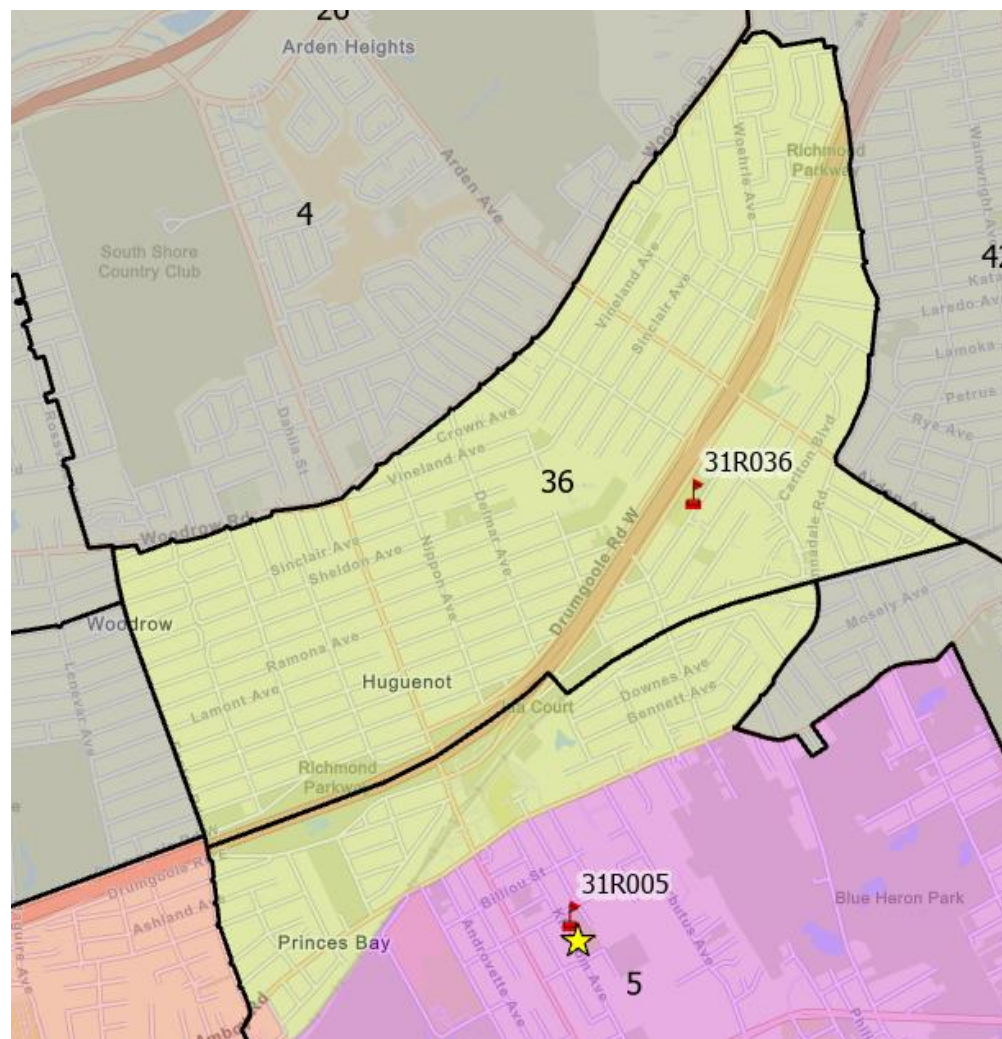
Zoomed Draft Zone Lines: P.S. 3 Proposed Zone



Zoomed Draft Zone Lines: Proposed P.S. 3 Area to be Rezoned



Zoomed Draft Zone Lines: P.S. 36 Proposed Zone



Zoomed Draft Zone Lines: Proposed P.S. 36 Area to be Rezoned

