



Office of District Planning

*Rezoning Presentation to
CEC 31*

September 19th, 2016

Table of Contents

	Slide #
I. Rationale for Rezoning	3
II. Overview of the Rezoning Process	4
III. Guiding Policies and Principles	5
IV. Methodology	6
V. Schools Affected by Rezoning	7
VI. Proposed Zone Lines	8
VII. Impact of Rezoning	9-10
VIII. Contact Information for Comments	11
IX. Appendices	12-15
a. Admissions Process	
b. Planned Section Counts	
c. Planned Average Class Sizes	
d. Zone Demographics	

Background and Rationale for Rezoning

The Staten Island School of Civic Leadership (31R861, “SISCL”) currently serves students in grades K-8 and offers one section of a Pre-K program.

- Currently, SISCL is zoned for both elementary and middle school.
 - Because the school typically has few open seats for new students at 6th grade, many new zoned students seeking to enroll in the middle school must be overflowed and served elsewhere.
 - Many of these students are currently overflowed to I.S. 72 Rocco Laurie (31R072, “I.S. 72”).
- Middle school students currently zoned to SISCL who do not attend the school for grades K-5 would be rezoned to I.S. 72, a neighboring middle school that has space to accommodate these students.

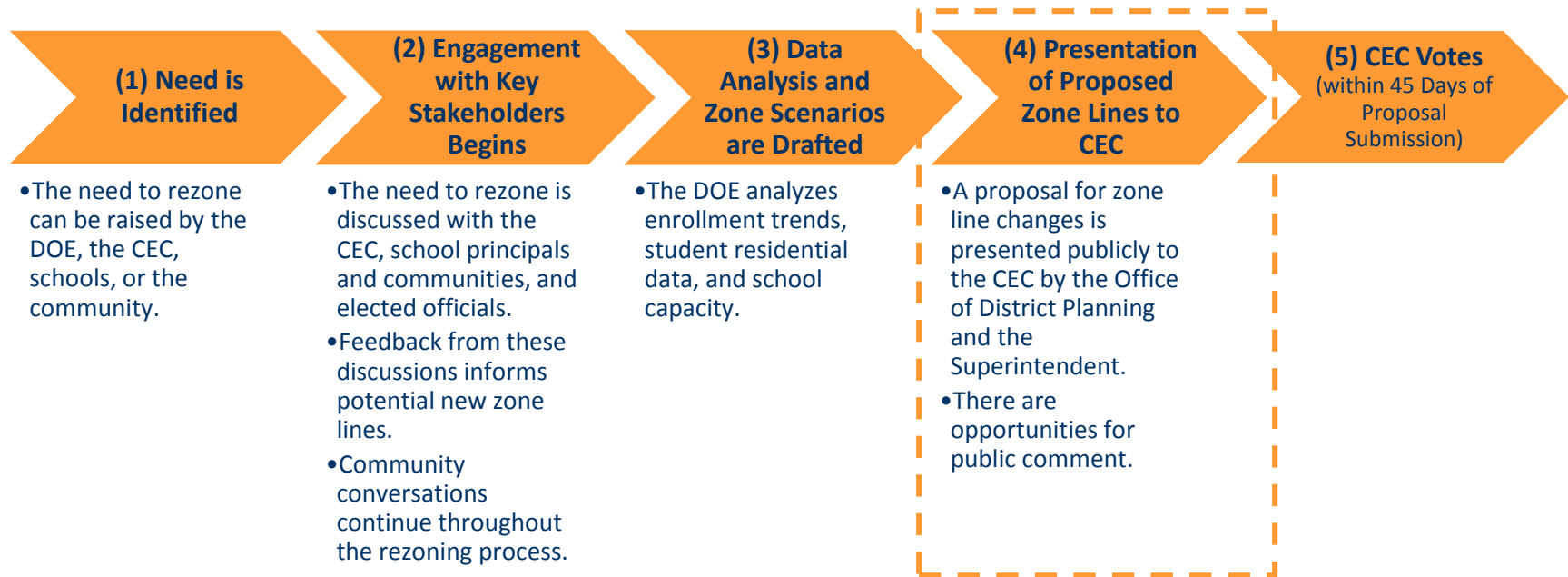
This will:

- Eliminate the need for SISCL to cap and overflow at the middle school level.
- Provide middle school families with clarity around available school options.
- Create consistent admissions priorities among K-8 schools in the district.

Fifth-grade students at SISCL would continue to retain priority to the middle school at SISCL.

- After all articulating students are offered a seat, priority for remaining seats would be given to students residing in the elementary school zone.

Overview of Rezoning Process & Timeline



Timeline for 2017 Implementation



Guiding Policies and Principles

- Pending approval by the CEC, all proposed changes would take effect for the 2017-2018 school year.
- Pending approval by the CEC, the proposed changes would only impact incoming sixth-grade students or new students to the system. All currently enrolled students may remain in their school until graduation.
- See Appendix A for the admissions process as outlined in the Chancellor's regulation A-101.
- The Office of Pupil Transportation (OPT) will follow standard procedure to determine bus service eligibility of general education students, as outlined by Chancellor's regulation A-801.



Methodology – Determining the Zone Lines

To the extent possible, we draw zone lines in a way that:

- Achieves appropriately sized zones for schools with zoned admissions;
- Addresses concerns of the local community;
- Accounts for population growth within the affected areas;
- Maintains the diversity of schools.



School Affected by Rezoning

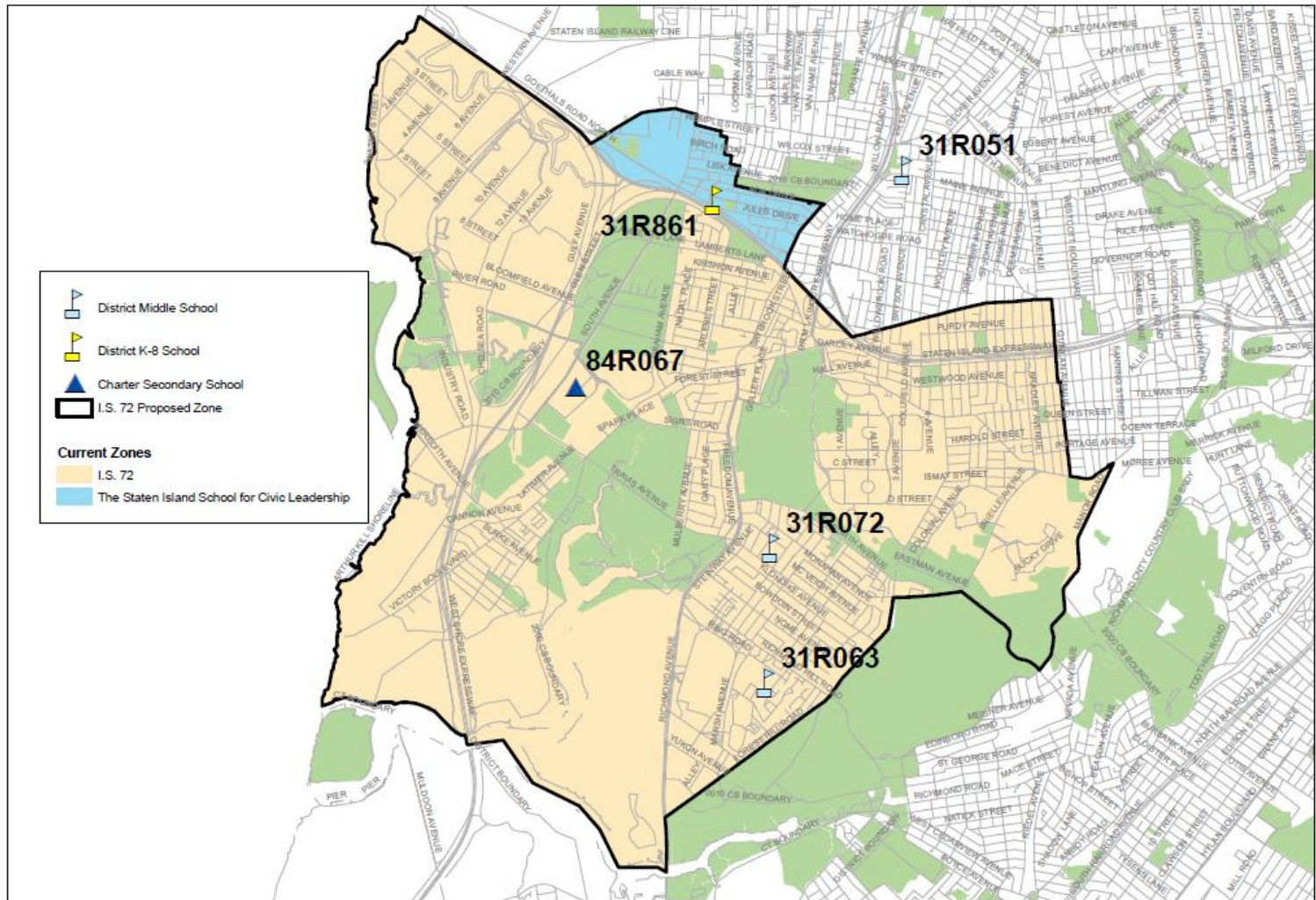
In the current school year (2016-2017):

DBN	School Name	Grade Span	Total Enrollment ¹	Total Org Capacity ²	Bldg Utilization %
31R861	The Staten Island School of Civic Leadership ³	K – 8	929	640	145%
31R072	I.S. 72 Rocco Laurie	6 – 8	1,381	1,433	96%



- (1) Based on 2016-17 budget register projections.
- (2) Based on 2014-2015 Blue Book Capacity.
- (3) SISCL also serves 1 section of Pre-Kindergarten.

Proposed Zone Lines



Projected Zone Size At Scale

School Name	2015-2016 6 th Grade Zone Size ¹	Projected 6 th Grade Zone Size	Change in 6 th Grade Zone Size
The Staten Island School of Civic Leadership	90	-	-
I.S. 72 Rocco Laurie	516	665-675	↑

Enrollment & Utilization

School Name	Projected At Scale			
	Grade Span At Scale	Total Enrollment ³	Total Org Capacity ⁴	Utilization Rate
The Staten Island School of Civic Leadership ²	K - 8	915-945	640	143%-148%
I.S. 72 Rocco Laurie	6 - 8	1,435-1,465	1,433	100%-102%

(1) The current zone size is based on the 2015-2016 Audited Register

(2) SISCL also serves 1 section of Pre-Kindergarten

(3) See appendix for assumed number of sections and average class sizes used to derive total enrollment

(4) Based on 2014-2015 Blue Book Capacity



**Department of
Education**

Carmen Fariña, Chancellor

Contact Information

Community
Superintendent

Email: ALodico@schools.nyc.gov
Subject: District 31 Rezoning

CEC
Community
Education Council

Email: CEC31@schools.nyc.gov
Subject: District 31 Rezoning

ODP
Office of District
Planning

Email: StatenIslandZoning@schools.nyc.gov
Subject: District 31 Rezoning



Department of
Education

Carmen Fariña, Chancellor

Appendix A – Admissions Process¹ - 6th Grade

Students will be enrolled in New York City middle schools by the following priority:

1. Students with a zoned middle school have a priority to attend that school if they rank it on their middle school application. During the middle school admissions process, available seats (determined by the Office of Student Enrollment, “OSE”) at zoned schools will be available for non-zoned students who apply once all of the zoned students have been accommodated in the application process. Zoned students who do not apply to their zoned school will be accommodated before non-zoned students on appeal as space is available.
2. Fifth-grade students attending a K-8 school maintain a priority for the 6th grade middle school admissions process if they rank the continuing K-8 school on their middle school choice application. During the middle school admissions process, available seats (determined by OSE) at K-8 schools will be available for non-continuing students who apply once all of the continuing students have been accommodated in the application process. Continuing students will be accommodated before non-continuing students on appeal as space is available.
3. When students receive a non-zoned or non-continuing school placement as a part of the middle school choice process, the students no longer have any entitlement to return to their zoned or K-8 school for the duration of middle school. Any requests for the zoned or K-8 school must be expressed through the PER or transfer process.



Appendix B – Projected Section Counts per Grade

School Name	GE/ICT Grades	Self-Contained
The Staten Island School of Civic Leadership	3	2
I.S. 72 Rocco Laurie	15	10

Appendix C – Planned Average Class Sizes

School Name	GE/ICT	Self-Contained
The Staten Island School of Civic Leadership ¹	29-30	12
I.S. 72 Rocco Laurie	29-30	10-12



Appendix D.1 – Zone Demographic Changes (Ethnicity)

School Name	Zone Percent Minority ¹	
	Current	Planned
The Staten Island School of Civic Leadership	76%	-
I.S. 72 Rocco Laurie	50%	50%-60%

- (1) Zone Percent Minority figures are based on the ethnicity of zoned kindergarten students from the 2015-2016 Audited Register. Students identified as “White – not of Hispanic origin” are not counted as minority. Figures do not necessarily represent the demographics of the school.

Appendix D.2 – Zone Demographic Changes (Socio-Economic)

School Name	Zone Percent Free & Reduced Price Lunch ¹	
	Current	Planned
The Staten Island School of Civic Leadership	80%	-
I.S. 72 Rocco Laurie	60%	60%-70%

- (1) Zone Percent Free and Reduced Lunch figures are based on the eligibility of zoned kindergarten students from the 2015-2016 Audited Register. Figures do not necessarily represent the demographics of the school.