



Office of Portfolio Management

*Proposal for Rezoning
presented to CEC 32*



**Department of
Education**

Dennis M. Walcott, Chancellor

October 18, 2012

Table of Contents

	Slide #
I. Rationale for Rezoning	3
II. Overview of the Rezoning Process	4
III. Guiding Policies and Principles	5
IV. Methodology	6-7
a. Determining the Target K Zone Size	
b. Determining the Zone Lines	
V. Schools Affected by Rezoning	8
VI. Proposed Zone Lines	9
VII. Impact of Rezoning	10-12
VIII. Contact Information for Comments	13
IX. Appendix	14-18
a. Admissions Process	
b. Planned Section Counts	
c. Planned Average Class Sizes	
d. Zoned Percentage Rates	
e. Overview of Projections Methodology	

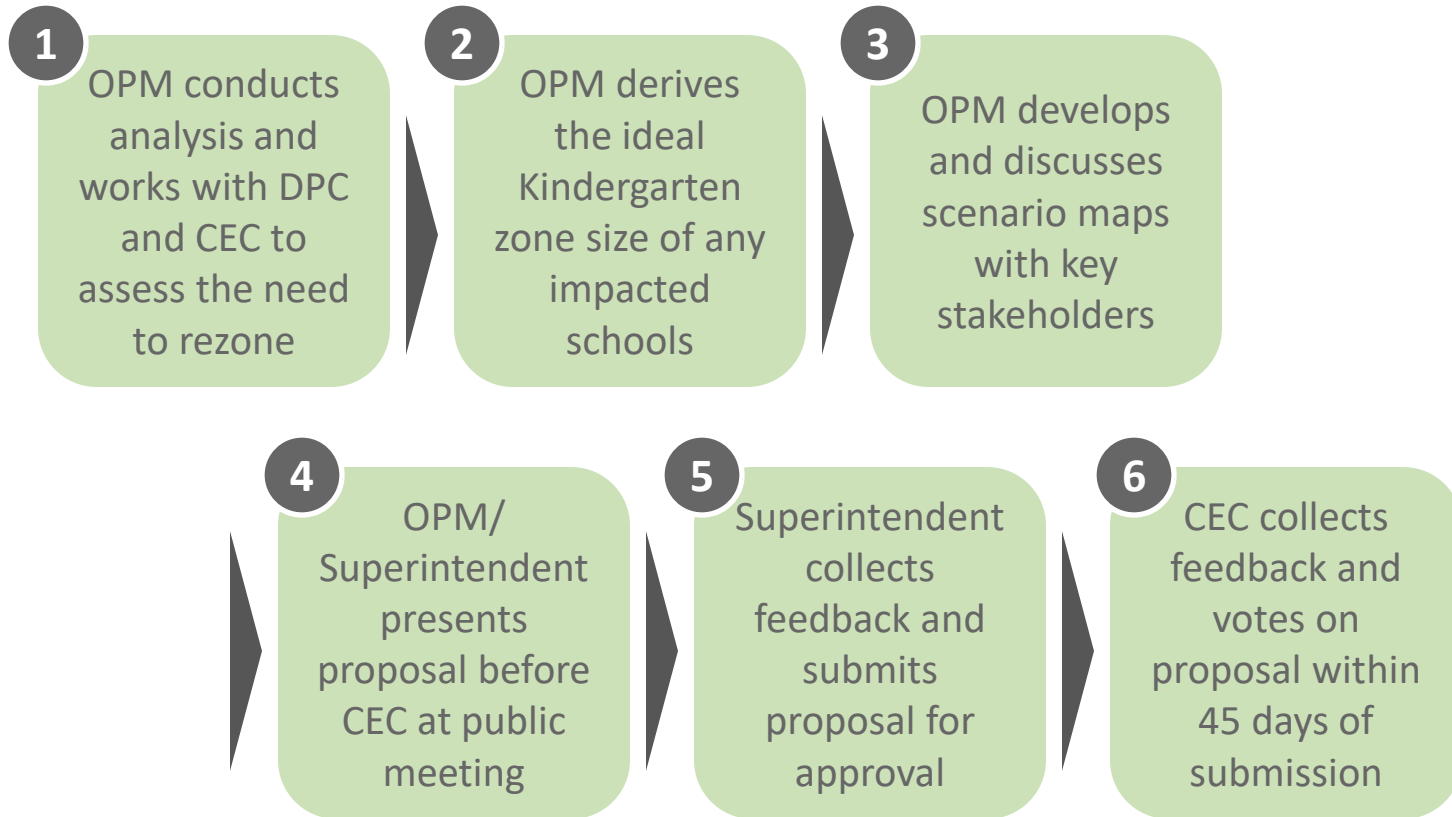


Rationale for Rezoning

- Rezoning District 32 residents to District 32 elementary schools will help alleviate the extreme overcrowding conditions in District 24 elementary schools and will accommodate students within their own residential district and borough.
 - District 24 is the most overcrowded district in Queens, and one of the most overcrowded in the city. This year, there were close to 400 kindergarten students on the kindergarten waitlist, and kindergarten enrollment continues to increase.
 - Some residents of District 32 are currently zoned to P.S. 81/P.S. 305 in District 24 for elementary school.



Overview of Rezoning Process



Guiding Policies and Principles

- Pending approval by the CEC, the proposed changes would take effect for the 2013-14 academic year.
- Pending approval by the CEC, the proposed changes would only impact incoming kindergarten or new students to the system. All currently enrolled student may remain in their school until graduation.
- Sibling enrollment policies would remain in effect. Children currently living in the affected zones who would be zoned to another school as a result of this proposal would retain their enrollment status as an in-zone sibling as long as they have an older sibling attending the school in grades 1-5 during the year in which the student would enroll in kindergarten.
- See Appendix A for the admissions process as outlined in the Chancellor's regulation A-101.



Methodology – Determining the Zone Lines

To the extent possible, we draw zone lines in a way that:

- Achieves the targeted kindergarten zone size for all affected schools;
- Addresses concerns of the local community;
- Accounts for residential construction and population growth within the affected areas;
- Avoids forcing students to cross geographic barriers (e.g. highways , district lines, etc.); and
- Maintains the diversity of schools.



Methodology – Determining the Target K Zone Size

Seat Supply: What is the capacity of each school?

Specifically, how many instructional sections can each building accommodate?

We assess capacity based on:

- The number of full-size classrooms available in the building;
- The number of cluster rooms to which a school is entitled; and
- Historical enrollment increases and decreases at each grade level.

Seat Demand: How many students do we anticipate at each school?

We assess demand – both from inside and outside the zone – based on:

- The historical number of kindergarten students living in the zone;
- Historical kindergarten waitlists and capping activity;
- Historical average class sizes;
- Historical zone retention rates (the percent of students who live in the zone and attend their zoned school);
- Historical zone enrollment rates (the percent of enrolled students who are also zoned to that school); and
- Anticipated kindergarten growth, based on current/future housing developments.



Schools Affected by Rezoning

DBN	School Name	Grade Span	Total Enrollment ¹	Total Capacity ²	Utilization %
District 32 Schools					
32K123	P.S. 123 Suydam	K-5	890	1,038	86%
32K086	P.S. 086 The Irvington	K-5	514	458	112%
32K116	P.S. 116 Elizabeth L Farrell	K-5	523	475	110%
32K376	P.S. 376	K-5	640	609	105%
District 24 Schools					
24Q081	P.S. 81 Jean Paul Richter	K-5	1,023	829 ³	123%
24Q305	Learners and Leaders	K-3	391	254	154%

(1) Based on the 2011 Audited Register.

(2) Based on the 2011-12 Blue Book.

(3) Transportable classroom units (TCUs) are being used to add an additional 6 classrooms (capacity of 122).

Impact of Rezoning – Kindergarten Zone Size

School Name	Current K Zone Size ¹	Planned K Zone Size	Change in K Zone Size
P.S. 123 Suydam	146	180-190	↑
P.S. 086 The Irvington	89	90-100	↑
P.S. 116 Elizabeth L Farrell	110	110-120	↑
P.S. 376	90	90-100	↑



Impact of Rezoning – Kindergarten Enrollment

School Name	Current		Planned		Change in K Enrollment ²
	# of GE/ICT K Sections	K Enrollment ¹	# of GE/ICT K Sections	K Enrollment	
P.S. 123 Suydam	7	169	8	185-195	↑
P.S. 086 The Irvington	4	81	4	85-95	↑
P.S. 116 Elizabeth L Farrell	4	104	4	90-100	No Change
P.S. 376	4	98	4	90-100	No Change

(1) The kindergarten enrollment is based on the 2011 Audited Register.

(2) We do not anticipate that the slight increases in K zone size will result in a material change in K enrollment at P.S. 116 or P.S. 376.

Impact of Rezoning – Total Enrollment & Utilization

School Name	Current		Planned		Change ³
	Total Enrollment ¹	Utilization Rate	Total Enrollment ²	Utilization Rate	
P.S. 123 Suydam	890	86%	1,100-1,160	105% - 110%	↑
P.S. 086 The Irvington	514	112%	490-550	105% - 120%	No Change
P.S. 116 Elizabeth L Farrell	523	110%	515-575	110% - 120%	No Change
P.S. 376	640	105%	605-665	100% - 110%	No Change

(1) Total enrollment is based on the 2011 Audited Register.

(2) See appendix for the assumed number of sections and average class sizes used to derive total enrollment.

(3) We do not anticipate that the slight increase in K zone size will result in a material change in overall enrollment at P.S. 86, P.S. 116, or P.S. 376.

Contact Information for Comments

Community
Superintendent

Phone: (718) 574 – 1100
Email: LDruck@schools.nyc.gov
Subject: District 32 Zoning

CEC
Community
Education Council

Email: CEC32@schools.nyc.gov
Subject: District 32 Zoning

OPM
Office of Portfolio
Management

Email: brooklynzoning@schools.nyc.gov
Subject: District 32 Zoning



Appendix A – Admissions Process

Students are (and would continue to be) enrolled in New York City elementary schools by the following priority:

- 1 - Zoned students with verified siblings who will be enrolled in grades 1-5 in the school as of September 2013
- 2 - Zoned students without siblings applying to the zoned school
- 3 - Non-zoned students with verified siblings, who will be enrolled in grades 1-5 in the school as of September 2013,
 - a. Within District first, then
 - b. Out of District
- 4 - Non-zoned students without siblings:
 - a. Within District first, then
 - b. Out of District



Appendix B – Planned Section Counts

GE/ICT

School Name	Pre-K	Kindergarten	Grades 1-5	Self-Contained
P.S. 123 Suydam	-	8	7	3
P.S. 086 The Irvington	-	4	3	1
P.S. 116 Elizabeth L Farrell	-	4	4	1
P.S. 376	-	4	4	2



Appendix C – Planned Average Class Sizes

GE/ICT

School Name	Pre-K	Kindergarten	Grades 1-5	Self-Contained
P.S. 123 Suydam	-	24	26	9
P.S. 086 The Irvington	-	22	28	12
P.S. 116 Elizabeth L Farrell	-	24	25	12
P.S. 376	-	24	26	9

Appendix D – Zone Retention and Enrollment Rates

School Name	Capped	K-Waitlist	Zone Retention Rate for Kindergarten		Zone Enrollment Rate for Kindergarten	
			Current	Planned	Current	Planned
P.S. 123 Suydam	No	No	82%	75%	70%	75%
P.S. 086 The Irvington	No	No	73%	75%	80%	80%
P.S. 116 Elizabeth L Farrell	No	No	76%	70%	81%	85%
P.S. 376	No	No	70%	70%	64%	70%



Department of
Education

Dennis M. Walcott, Chancellor

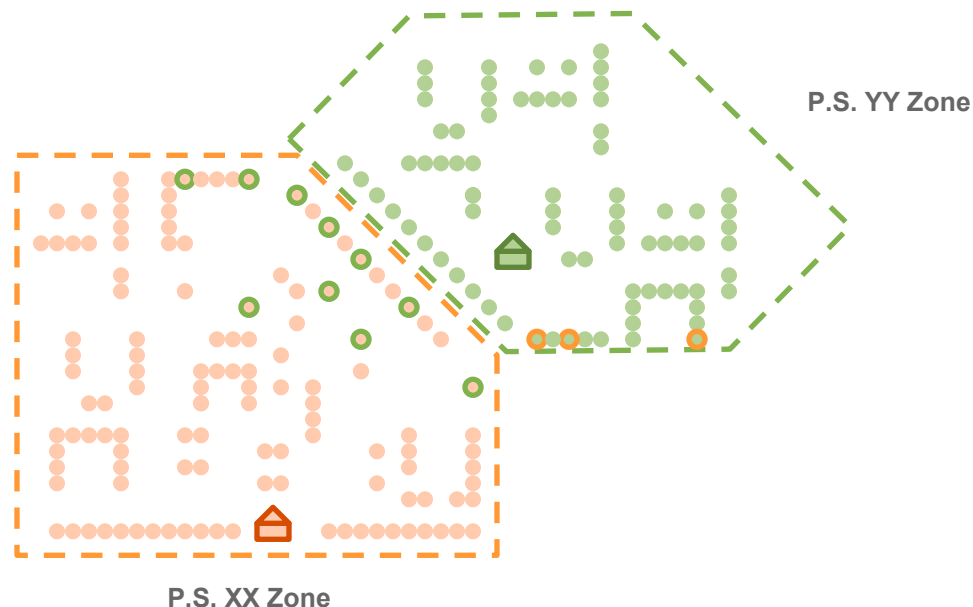
(1) The current rates are based on 2011 Audited Register.

(2) Planned rates are based on various factors, including but not limited to an assumed reduction in the number of out-of-zoned enrollment.

Appendix E – Projections Methodology

- Zoned to PS XX and attends.
- Zoned to PS XX but does not attend.
- Not zoned to PS XX but attends.

Metric	Definition	Value
Zone Size:	# of students that live in PS XX zone	● +
Zone Retention Rate:	% of zoned students that attend PS XX	$\frac{\text{orange dots}}{(\text{orange dots} + \text{green dots})}$
Zoned Enrollment Rate:	% of total enrollment that resides in zone	$\frac{\text{orange dots}}{(\text{orange dots} + \text{orange dots with green border})}$



Example, Part I: There are currently 100 kindergarten students living in the P.S. XX zone. Due to the lack of a Gifted & Talented program, about 10 students on average have chosen to attend P.S. YY instead. What is the Zoned Retention Rate for P.S. XX?

$$\text{Zoned Retention Rate} = \text{Zoned Students that Attend} \div \text{Zone Size} = (100-10) \div 100 = 90\%$$

Zone Size: 100

Zoned Enrollment Rate: 90%

Total Zoned Enrollment: 90