



Proposal for the Rezoning of P.S. 50, P.S. 38, and P.S. 146

Presented to Community Education Council 4

Office of District Planning

May 9, 2018

Why Propose a Rezoning in District 4?

- On February 28, 2018, the Panel for Educational Policy approved a proposal to close P.S. 50 at the end of the 2017-2018 school year.
- As a result of the closure of P.S. 50, and in the absence of a rezoning, students residing in the P.S. 50 zone will not have a zoned elementary school option after the 2017-2018 school year.
- The NYCDOE is proposing a rezoning to ensure that students living within this area have a zoned option beginning in the 2018-2019 school year.

Impact of Closure on Current P.S. 50 Students

- Current students in grades K-4 and 6-7 will be offered seats in other elementary and middle schools in District 4 or their district of residence, if different.
- Graduating students currently in 5th and 8th grades will continue through the regular middle school and high school admissions processes.
- Central Park East II is moving to building M050 as of the 2018-2019 school year and will serve PK-8th grade.
- Until a rezoning occurs, Central Park East II will give first priority on the kindergarten application for students living in the P.S. 50 zone.

Overview of the M050 Zone

- P.S. 50 is zoned at Kindergarten for elementary school.
- P.S. 50 currently serves students in grades K-8.
- P.S. 50 Zone Size: in the current school year (2017-2018), there are 99 kindergarten students living in the P.S. 50 zone, of which 17% attend P.S. 50.
- Of the 25 kindergarten students enrolled at P.S. 50, 68% come from the P.S. 50 zone.

Standard Policies for Rezoning

When: Pending approval by the CEC, proposed rezoning changes would take effect for the 2018-2019 academic year.

Who: Proposed changes would primarily impact incoming pre-kindergarten and kindergarten students, and new students to the system. Typically, all currently enrolled students in grades K-5 may remain in their school until graduation.

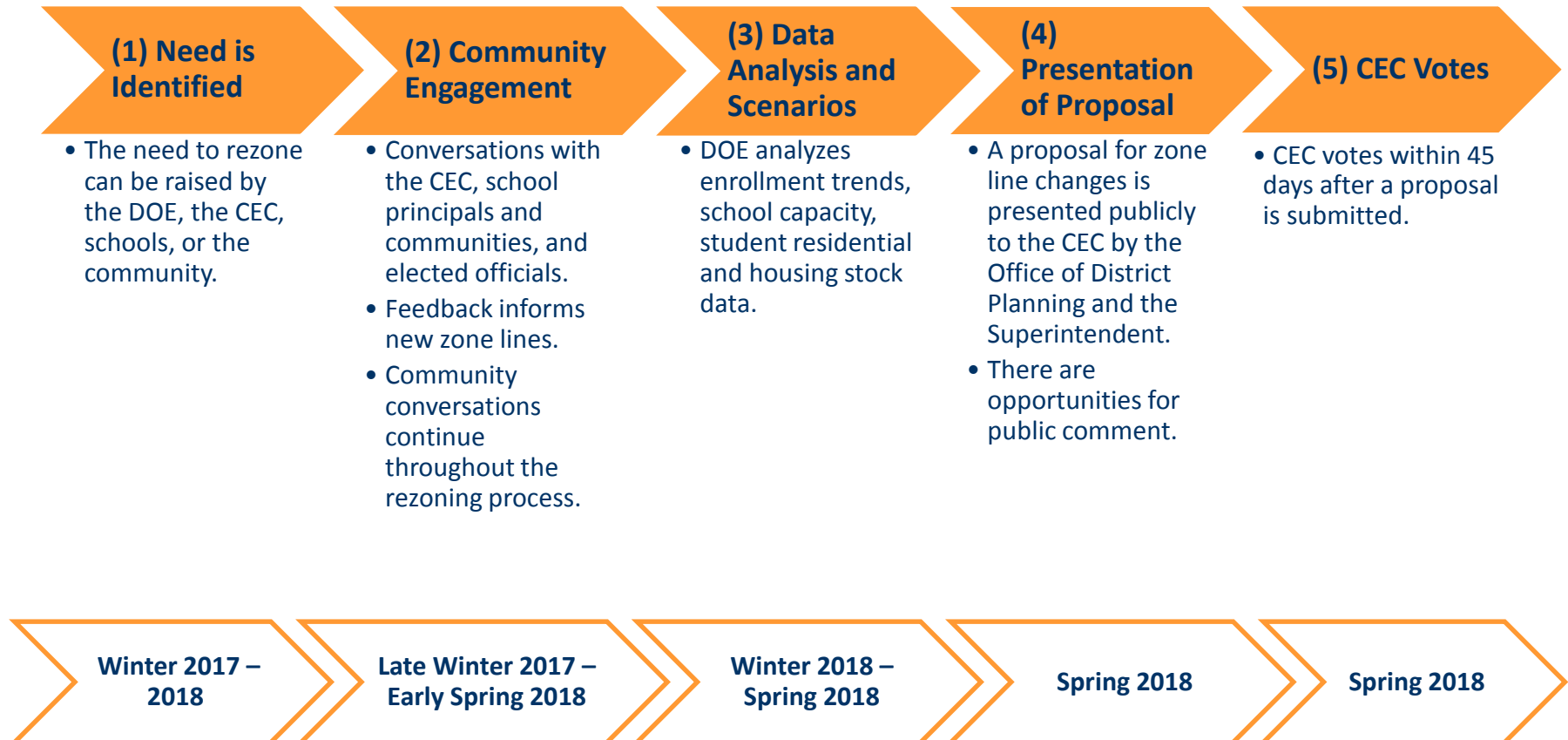
Students currently attending P.S. 50 will not be able to remain in their school since P.S. 50 is closing at the end of the 2017-2018 school year.

Standard Policies for Rezoning

Standard Admissions Policies: All impacted schools will continue to admit students according to Chancellor's regulation A-101.

Standard Busing Policies: The Office of Pupil Transportation (OPT) will follow standard procedure to determine bus service eligibility of general education students, as outlined by Chancellor's regulation A-801.

Rezoning Process and Timeline

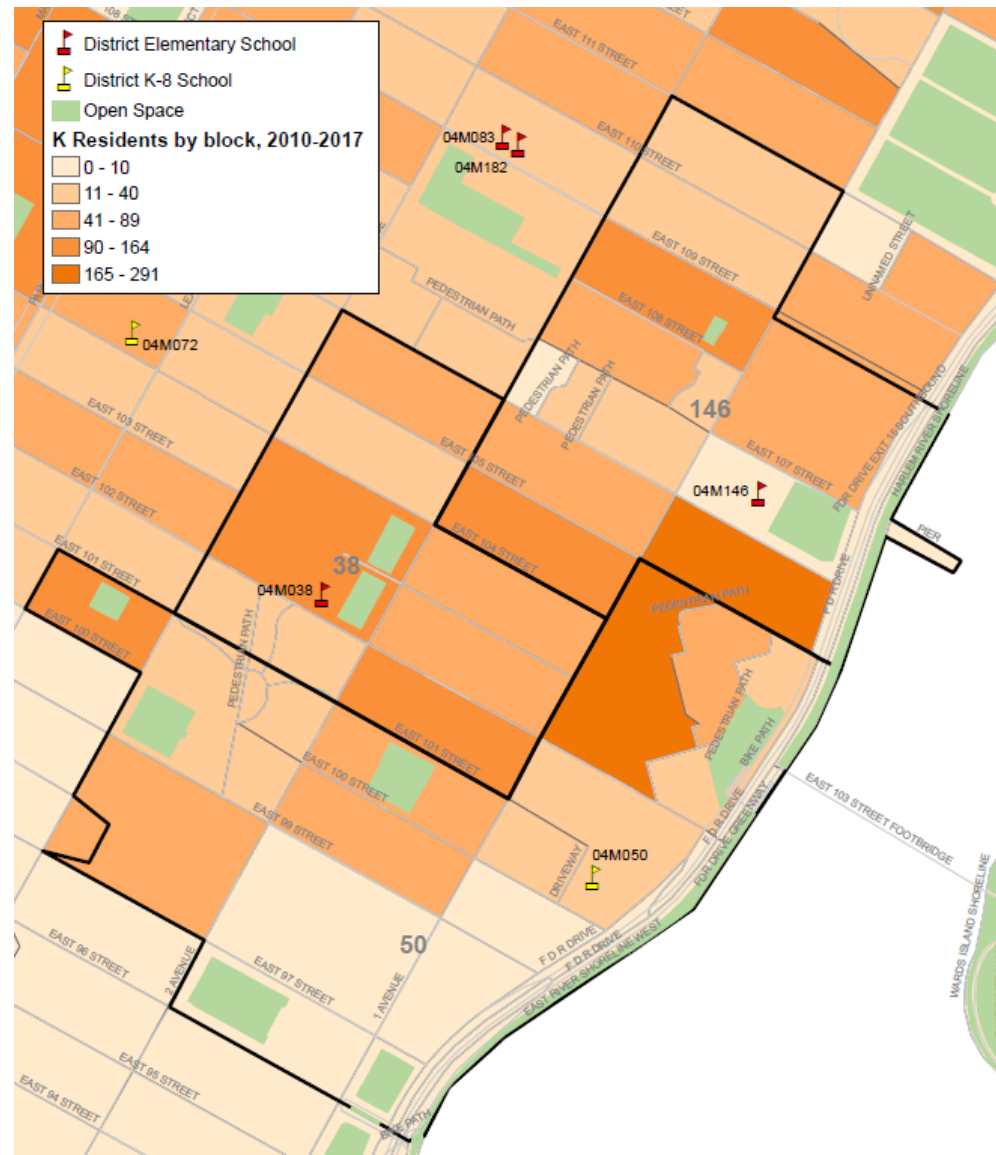


Rezoning Methodology

Steps:

1. Determine the target Kindergarten Zone Size for each school
2. Project future kindergarten residents
3. Draw new zone line scenarios

Current Elementary School Zone Lines – Density Map



[illegible]

Proposed Elementary School Zone Lines



Benefits of this Rezoning

- A rezoning will provide students living in the P.S. 50 zone with a zoned elementary school option.
- The zoned elementary school option would be either P.S. 38 or P.S. 146 depending on where students live.
- P.S. 38 and P.S. 146 will have more sustainable enrollments with their larger zone sizes.

Impact on School Zone Size

DBN	School Name	Current Zone Size ¹	Projected Zone Size ²	Change
04M050	P.S. 50 Vito Marcantonio	101	-	N/A
04M038	P.S. 38 Roberto Clemente	78	125-145	Increase
04M146	P.S. 146 Ann M. Short	107	150-170	Increase

(1) Current zone size is based on a three-year 2015-2017 average.

(2) Projected zone size is when the rezoning is at scale.

Impact on School Enrollment

DBN	School Name	Current K Enrollment ¹	Projected K Enrollment ²	Current Total Enrollment ¹	Projected Total Enrollment ²
04M050	P.S. 50 Vito Marcantonio	26	-	262	-
04M038	P.S. 38 Roberto Clemente	35	40-50	230	284-344
04M146	P.S. 146 Ann M. Short	63	70-80	358	475-535

(1) Current enrollment is based on a three-year 2015-2017 average.

(2) Projected enrollment is when the rezoning is at scale.

Impact on School Utilization

DBN	School Name	Capacity ¹	Current Org Utilization ²	Projected Org Utilization	Change
04M050	P.S. 50 Vito Marcantonio	496	51%	-	N/A
04M038	P.S. 38 Roberto Clemente	318	67%	89%-108%	Increase
04M146	P.S. 146 Ann M. Short	472	71%	101%-113%	Increase

(1) Based on 2016-2017 Blue Book.

(2) Utilization based on the 2017-2018 Audited Register and 2016-2017 Blue Book Capacity.

Zone Demographic Changes

Free & Reduced Lunch or HRA Eligible

School Name	Current % Eligible ¹	Projected % Eligible
P.S. 50 Vito Marcantonio	89%	-
P.S. 38 Roberto Clemente	87%	85%-95%
P.S. 146 Ann M. Short	88%	85%-95%

(1) Current % FRL or HRA Eligible is based on a three-year 2015-2017 average.

Zone Demographic Changes

Current Ethnicity¹

School Name	Asian	Black	Hispanic	White	Other
P.S. 50 Vito Marcantonio	3%	36%	55%	4%	2%
P.S. 38 Roberto Clemente	6%	34%	56%	3%	1%
P.S. 146 Ann M. Short	8%	25%	63%	4%	1%

(1) Current ethnicity is based on a three-year 2015-2017 average.

Zone Demographic Changes

Projected Ethnicity

School Name	Asian	Black	Hispanic	White	Other
P.S. 50 Vito Marcantonio	-	-	-	-	-
P.S. 38 Roberto Clemente	0%-10%	30%-40%	55%-65%	0%-10%	0%-10%
P.S. 146 Ann M. Short	0%-10%	25%-35%	55%-65%	0%-10%	0%-10%

FOR FEEDBACK AND MORE INFORMATION

Contact:

Community Education Council 4

CEC4@schools.nyc.gov

Office of District Planning

ManhattanZoning@schools.nyc.gov

Manhattan District Planning webpage:

<http://schools.nyc.gov/community/planning/changes/Manhattan/districtplanning.htm>

Questions and Answers

Appendix

- A. Section Counts
- B. Average Class Size
- C. Zone Demand
- D. Zone Demographics – Ethnicity
- E. Historical Ratios
- F. Rezoning Methodology
- G. Current District 4 Elementary School Zones

Appendix A.1:

2017-2018 Elementary School Section Counts

School Name	3K	PK	K	Grades 1-5	Self-Contained
P.S. 50 Vito Marcantonio	-	-	1	1-2	-
P.S. 38 Roberto Clemente	-	2	2	1-2	2
P.S. 146 Ann M. Short	-	2	2	1-2	4

Appendix A.2: Projected Elementary School Section Counts

School Name	3K	PK	K	Grades 1-5	Self-Contained
P.S. 50 Vito Marcantonio	-	-	-	-	-
P.S. 38 Roberto Clemente	1	2	2	2	2
P.S. 146 Ann M. Short	2	2	3	3	4

Appendix B.1:

2017-2018 Average Class Sizes

School Name	3K	PK	K	Grades 1-5	Self-Contained
P.S. 50 Vito Marcantonio	-	-	25	23	-
P.S. 38 Roberto Clemente	-	13	15	23	9
P.S. 146 Ann M. Short	-	15	22	23	11

Appendix B.2:

Projected Average Class Sizes

School Name	3K	PK	K	Grades 1-5	Self-Contained
P.S. 50 Vito Marcantonio	-	-	-	-	-
P.S. 38 Roberto Clemente	15	18	22-24	20-22	8-10
P.S. 146 Ann M. Short	15	18	22-24	20-22	10-12

Appendix C:

Zone Demand

School Name	Current Zone Retention ¹	Projected Zone Retention	Current Zone Enrollment ²	Projected Zone Enrollment
P.S. 50 Vito Marcantonio	20%	-	77%	-
P.S. 38 Roberto Clemente	21%	20%-30%	47%	70%-80%
P.S. 146 Ann M. Short	33%	25%-35%	56%	55%-65%

(1) Current zone retention is based on a three-year 2015-2017 average.

(2) Current zone enrollment is based on a three-year 2015-2017 average.

Appendix D: Zone Demographic Changes

Non-White

School Name	Current % Non-white ¹	Projected % Non-white
P.S. 50 Vito Marcantonio	96%	-
P.S. 38 Roberto Clemente	97%	90%-100%
P.S. 146 Ann M. Short	96%	90%-100%

(1) Current % non-white is based on a three-year 2015-2017 average.

Appendix E: Historic Ratios by Zone¹

	Kindergarten Residents per Housing Unit							3 year avg.
	2011	2012	2013	2014	2015	2016	2017	
04M050	0.028	0.024	0.027	0.030	0.026	0.025	0.025	0.025
04M038	0.022	0.024	0.029	0.036	0.034	0.032	0.027	0.031
04M146	0.033	0.029	0.030	0.031	0.030	0.031	0.023	0.028
East Harlem Zones	0.028	0.026	0.029	0.032	0.029	0.029	0.025	0.028

(1) Based on 2011-2017 Audited Registers, and housing data provided by the Department of City Planning.

Appendix F: Rezoning Methodology

Steps:

1. Determine the target Kindergarten Zone Size for each school
2. Project future kindergarten residents
3. Draw new zone line scenarios

Methodology Step 1: Determining the Target Zone Size

Seat Supply: What is the capacity of each school?

Specifically, how many instructional sections (i.e. classes) and how many students can each building accommodate?

Seat Demand: How many students do we anticipate?

We assess demand – both from inside and outside the zone – based on:

- The historical number of kindergarten students living in the zone;
- Historical kindergarten waitlists and capping activity;
- Historical average class sizes;
- Historical zone retention rates and historical zone enrollment rates; and
- Anticipated kindergarten growth, based on current/future housing developments.

Methodology Step 2a: Projecting Kindergarten Residents

Analysis of Historical Ratios (2011-2017)

- > Analyze annual ratios of Kindergarteners to Housing Units
- > Ratios are calculated at multiple levels of geography
 - Block
 - School zone
 - Neighborhood
 - School district



Methodology Step 2b:

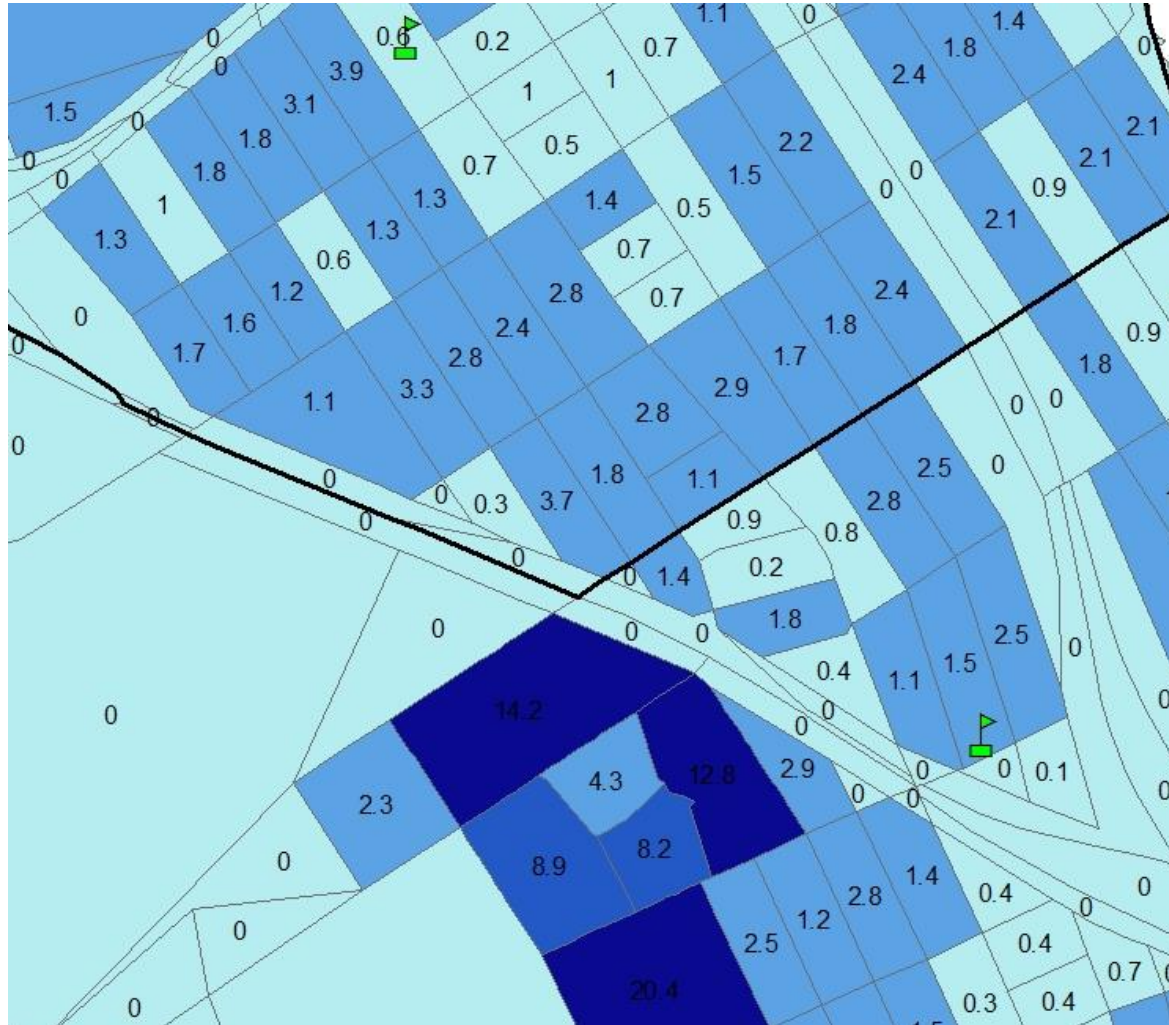
Projecting Kindergarten Residents

Projecting Kindergarten Residents per Block


- > Housing projected for each block (existing units + issued DOB permits)
- > Weighted average of historical ratios (# of students per housing unit)



Methodology Step 2: Projecting Kindergarten Residents



Map legend

 Current Zone Line

Projected Kindergarten students

 >10

5.1 to 10

 1.1 to 5

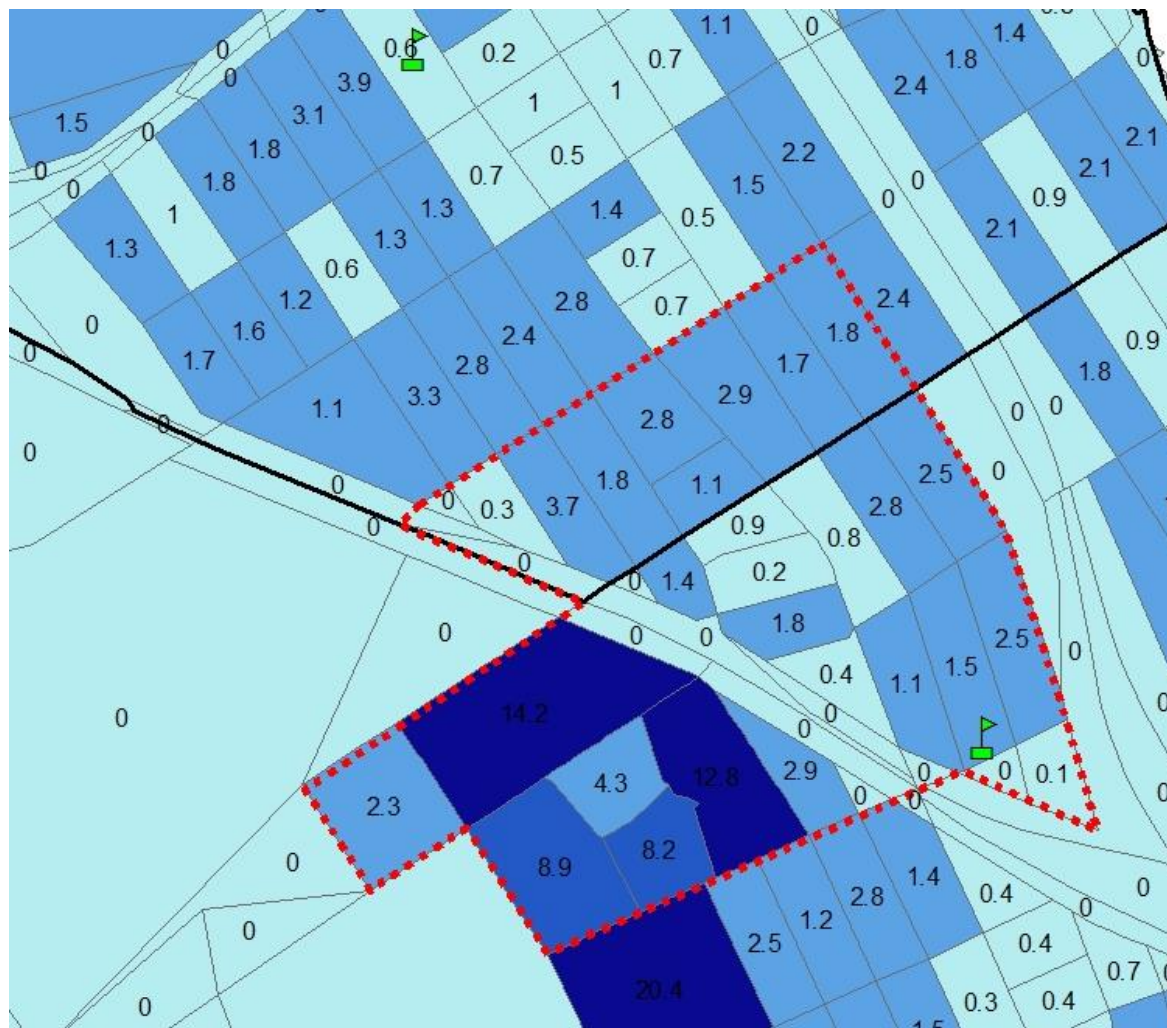
0 to 1

Methodology Step 3: Drawing the Zone Lines



To the extent possible, we draw zone lines in a way that:

- Contains appropriate number of residents for a school's size, based on recent public school enrollment trends
- Keeps each school geographically within the zone boundaries
- Factors we take into consideration:
 - New residential construction
 - Diversity
 - Geographic barriers
 - Travel distance



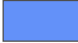

Methodology Step 3: Drawing the Zone Lines



Map legend

-  Current Zone Line
-  Proposed Zone Line

Projected Kindergarten students

-  >10
-  5.1 to 10
-  1.1 to 5
-  0 to 1

Appendix G: Current Elementary School Zones in District 4

