



Office of Portfolio Management

*Proposal for Rezoning
presented to CEC 8 by the
Community School District
Superintendent*



**Department of
Education**

Dennis M. Walcott, Chancellor

November 8, 2012

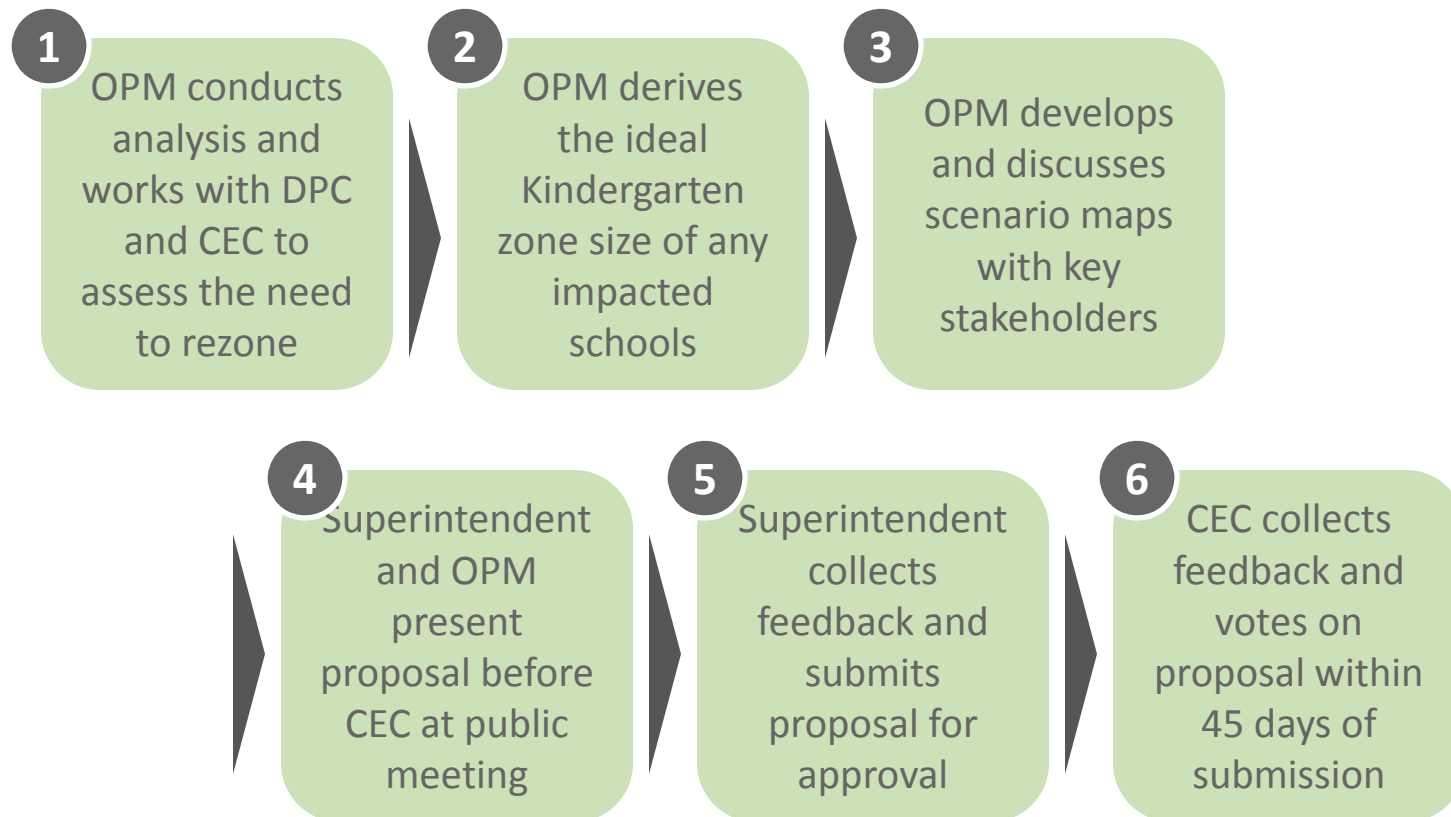
Table of Contents

	Slide #
I. Rationale for Rezoning	3
II. Overview of the Rezoning Process	4
III. Guiding Policies and Principles	5
IV. Methodology	6-7
a. Determining the Target K Zone Size	
b. Determining the Zone Lines	
V. Schools Affected by Rezoning	8
VI. Proposed Zone Lines	9
VII. Impact of Rezoning	10-12
VIII. Contact Information for Comments	13
IX. Appendix	14-18
a. Admissions Process	
b. Planned Section Counts	
c. Planned Average Class Sizes	
d. Zoned Percentage Rates	
e. Overview of Projections methodology	

Rationale for Rezoning

To alleviate overcrowding at P.S. 138 Samuel Randall

Overview of Rezoning Process



Guiding Policies and Principles

- Pending approval by the CEC, the proposed changes would take effect for the 2013-14 academic year.
- Pending approval by the CEC, the proposed changes would only impact incoming Kindergarten or new students to the system. All currently enrolled students may remain in their school until graduation.
- Sibling enrollment policies would remain in effect. Children currently living in the affected zones who would be zoned to another school as a result of this proposal would retain their enrollment status as an in-zone sibling as long as they have an older sibling attending the school in grades 1-5 during the year in which the student would enroll in kindergarten.
- See Appendix A for the admissions process as outlined in the Chancellor's regulation A-101.

Methodology – Determining the Target K Zone Size

Seat Supply: What is the capacity of each school?

Specifically, how many instructional sections can each building accommodate?

We assess capacity based on:

- The number of full-size classrooms available in the building;
- The number of cluster rooms to which a school is entitled; and
- Historical enrollment increases and decreases at each grade level.

Seat Demand: How many students do we anticipate?

We assess demand – both from inside and outside the zone – based on:

- The historical number of Kindergarten students living in the zone;
- Historical Kindergarten waitlists and capping activity;
- Historical average class sizes;
- Historical zone retention rates (the percent of students who live in the zone and attend their zoned school);
- Historical zone enrollment rates (the percent of enrolled students who are also zoned to that school); and
- Anticipated Kindergarten growth, based on current/future housing developments.

Methodology – Determining the Zone Lines

To the extent possible, we draw zone lines in a way that:

- Achieves the targeted Kindergarten zone size for all affected schools;
- Addresses concerns of the local community;
- Avoids forcing students to cross geographic barriers (e.g. highways , district lines, etc.);
- Centrally locates the school within the zone;
- Minimizes the distance students must travel to attend their zoned school; and
- Maintains the diversity of schools.

Schools Affected by Rezoning

DBN*	School Name	Grade Span	Total Enrollment ¹	Total Capacity ²	Utilization %
08X138	P.S. 138 Samuel Randall ³	K-5	914	600	152% ⁴
08X100	P.S. 100 Isaac Clason	K-5	652	680	96%
08X182	P.S. 182	K-5	957	920	104%

* All three affected schools offer a PK program.

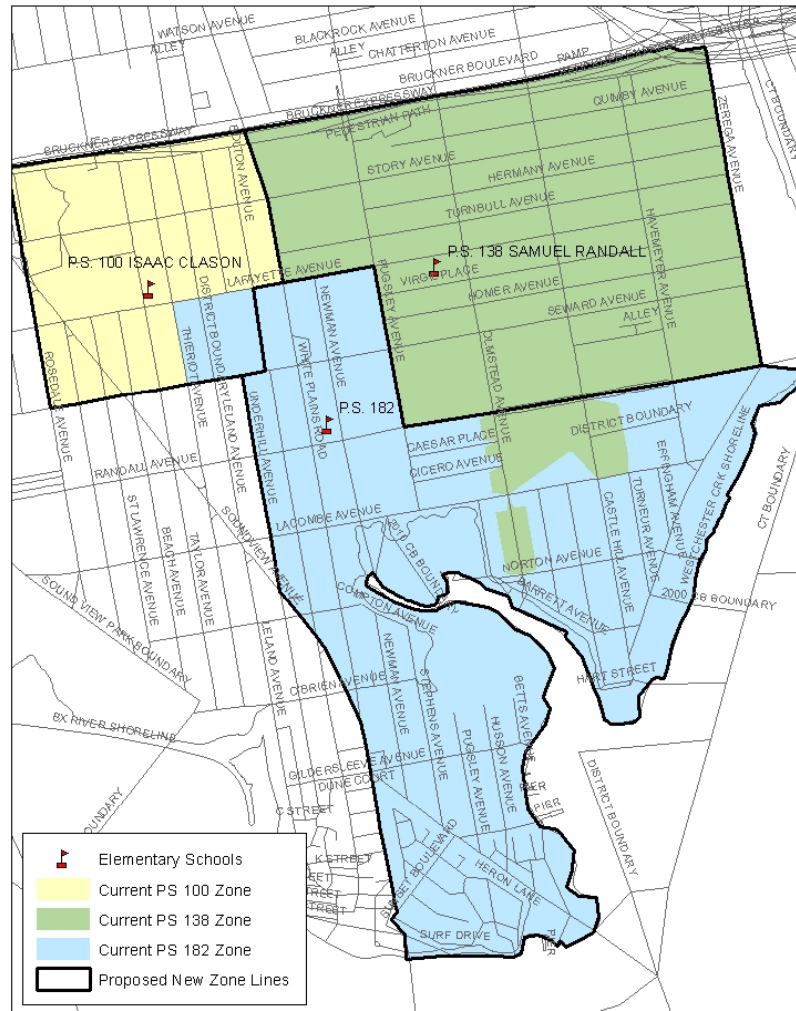
(1) Based on 2011-12 Audited Register.

(2) Based on the 2011-12 Blue Book Capacity.

(3) Enrollment, capacity, and utilization rates for P.S. 138 do not include the PK program offered at the Stevenson Campus (X450) located at 1980 Lafayette Avenue, Bronx, NY 10473.

(4) Utilization rate includes capacity in main building (X138) and TCU (X938).

Proposed Zone Lines



Please refer to the handout
District 08 Elementary School
Proposal for CEC

Impact of Rezoning – Kindergarten Zone Size

School Name	Current K Zone Size ¹	Planned K Zone Size	Change in K Zone Size
P.S. 138 Samuel Randall	201	150-160	↓
P.S. 100 Isaac Clason	103	125-135	↑
P.S. 182	184	195-205	↑

Impact of Rezoning – Kindergarten Sections

School Name	Current ¹		Planned		Change in K Enrollment
	# of GE/ICT K Sections	K Enrollment	# of GE/ICT K Sections	K Enrollment	
P.S. 138 Samuel Randall	6	170	6	135-145	↓
P.S. 100 Isaac Clason	4	103	5	110-120	↑
P.S. 182	8	157	8	170-180	↑

Impact of Rezoning – Total Enrollment & Utilization

School Name	Current ¹		Planned ²		Change
	Total Enrollment	Utilization Rate	Total Enrollment	Utilization Rate ³	
P.S. 138 Samuel Randall ⁴	914	152%	805-870	134%-145%	↓
P.S. 100 Isaac Clason	652	96%	690-760	101%-112%	↑
P.S. 182	957	104%	1,040-1,105	113%-120%	↑

- (1) All current total enrollment and utilization figures in this slide are based on the 2011-12 Audited Register and the 2011-12 Blue Book.
- (2) See appendix for assumed number of sections and average class sizes used to derive planned total enrollment.
- (3) Utilization rates above 100% do not necessarily mean that a school is overcrowded. The SCA calculates capacity using an aspirational target of 20 students in grades K-3 and 28 in grades 4-8. Classroom space is programmed more efficiently within the UFT's contractual limits to accommodate the maximum number of zoned students.
- (4) Current and planned enrollment and utilization rates for P.S. 138 do not include the PK program offered at the Stevenson Campus (X450) located at 1980 Lafayette Avenue, Bronx, NY 10473.

Contact Information for Comments

Community
Superintendent
Timothy Behr

Email: TBehr@schools.nyc.gov
Subject: D8 Elementary School Zoning

CEC 8
Community
Education Council

Email: CEC8@schools.nyc.gov
Subject: D8 Elementary School Zoning

OPM
Office of Portfolio
Management

Email: BronxZoning@schools.nyc.gov
Subject: D8 Elementary School Zoning

Appendix A – Admissions Process

Students are (and would continue to be) enrolled in New York City elementary schools by the following priority:

- 1 - Zoned students with verified siblings who will be enrolled in grades 1-5 in the school as of September 2013
- 2 - Zoned students without siblings applying to the zoned school
- 3 - Non-zoned students with verified siblings, who will be enrolled in grades 1-5 in the school as of September 2013,
 - a. Within District first, then
 - b. Out of District
- 4 - Non-zoned students without siblings:
 - a. Within District first, then
 - b. Out of District

Appendix B – Planned Section Counts

School Name	GE/ICT			
	Pre-K ¹	Kindergarten	Grades 1-5	Self-Contained
P.S. 138 Samuel Randall	– ²	6	5	4
P.S. 100 Isaac Clason	1	5	4	5
P.S. 182	3	8	6	–

(1) PK sections reflect full day equivalency.

(2) Plans do not include P.S. 138's PK program enrollment or capacity. P.S. 138 currently serves 3 sections of PK.

Appendix C – Planned Average Class Sizes

School Name	GE/ICT			
	Pre-K	Kindergarten	Grades 1-5	Self-Contained
P.S. 138 Samuel Randall	– ¹	23	27	12
P.S. 100 Isaac Clason	18	23	28	12
P.S. 182	18	22	29	–

Appendix C – Zone Retention and Enrollment Rates

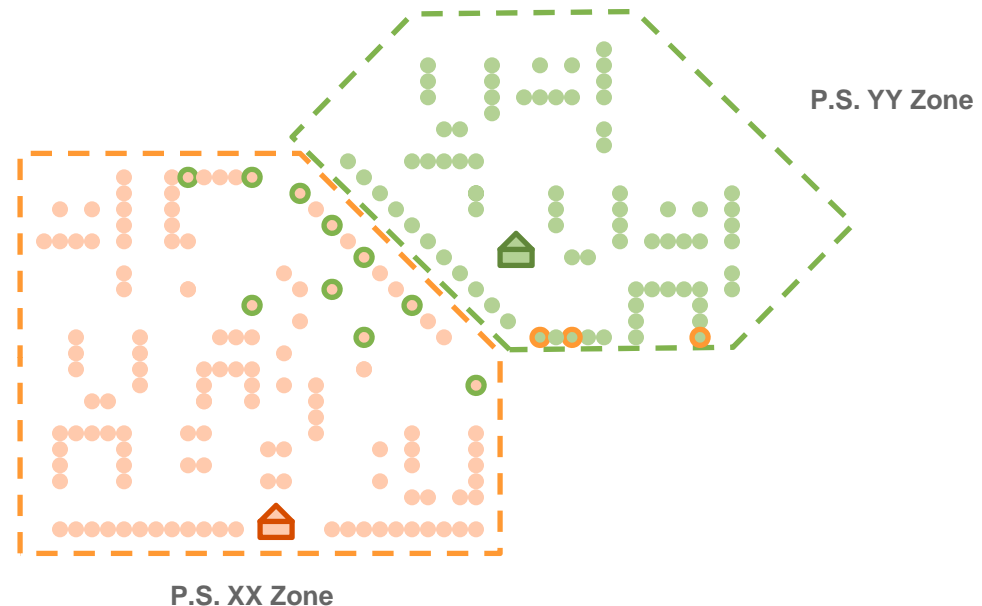
School Name	Capped	K-Waitlist	Zone Retention Rate for Kindergarten		Zone Enrollment Rate for Kindergarten	
			Current	Planned	Current	Planned
P.S. 138 Samuel Randall	Yes; 2010-11	No	74%	75%	92%	90%
P.S. 100 Isaac Clason	Yes, 2010-11; Yes, 2012-13	No	77%	75%	77%	85%
P.S. 182	No	No	70%	75%	77%	85%

- (1) The current rates are based on the 2011-12 Audited Register.
- (2) Planned rates are based on various factors, including but not limited to the historical number of zoned Kindergarten students that were waitlisted or overflowed due to capping as well as an assumed reduction in the number of out-of-zoned enrollment.

Appendix D – Projections Methodology

- Zoned to PS XX and attends.
- Zoned to PS XX but does not attend.
- Not zoned to PS XX but attends.

Metric	Definition	Value
Zone Size:	# of students that live in PS XX zone	● +
Zone Retention Rate:	% of zoned students that attend PS XX	$\frac{\text{orange dots}}{(\text{orange dots} + \text{green circles})}$
Zoned Enrollment Rate:	% of total enrollment that resides in zone	$\frac{\text{orange dots}}{(\text{orange dots} + \text{orange dots with green border})}$



Example, Part I: There are currently 100 kindergarten students living in the P.S. XX zone. Due to the lack of a Gifted & Talented program, about 10 students on average have chosen to attend P.S. YY instead. What is the Zoned Retention Rate for P.S. XX?

$$\text{Zoned Retention Rate} = \text{Zoned Students that Attend} \div \text{Zone Size} = (100-10) \div 100 = 90\%$$

Zone Size: 100
 Zoned Enrollment Rate: 90%
 Total Zoned Enrollment: 90