



Office of Portfolio Management

*Proposal for Rezoning
presented to District 9*



**Department of
Education**

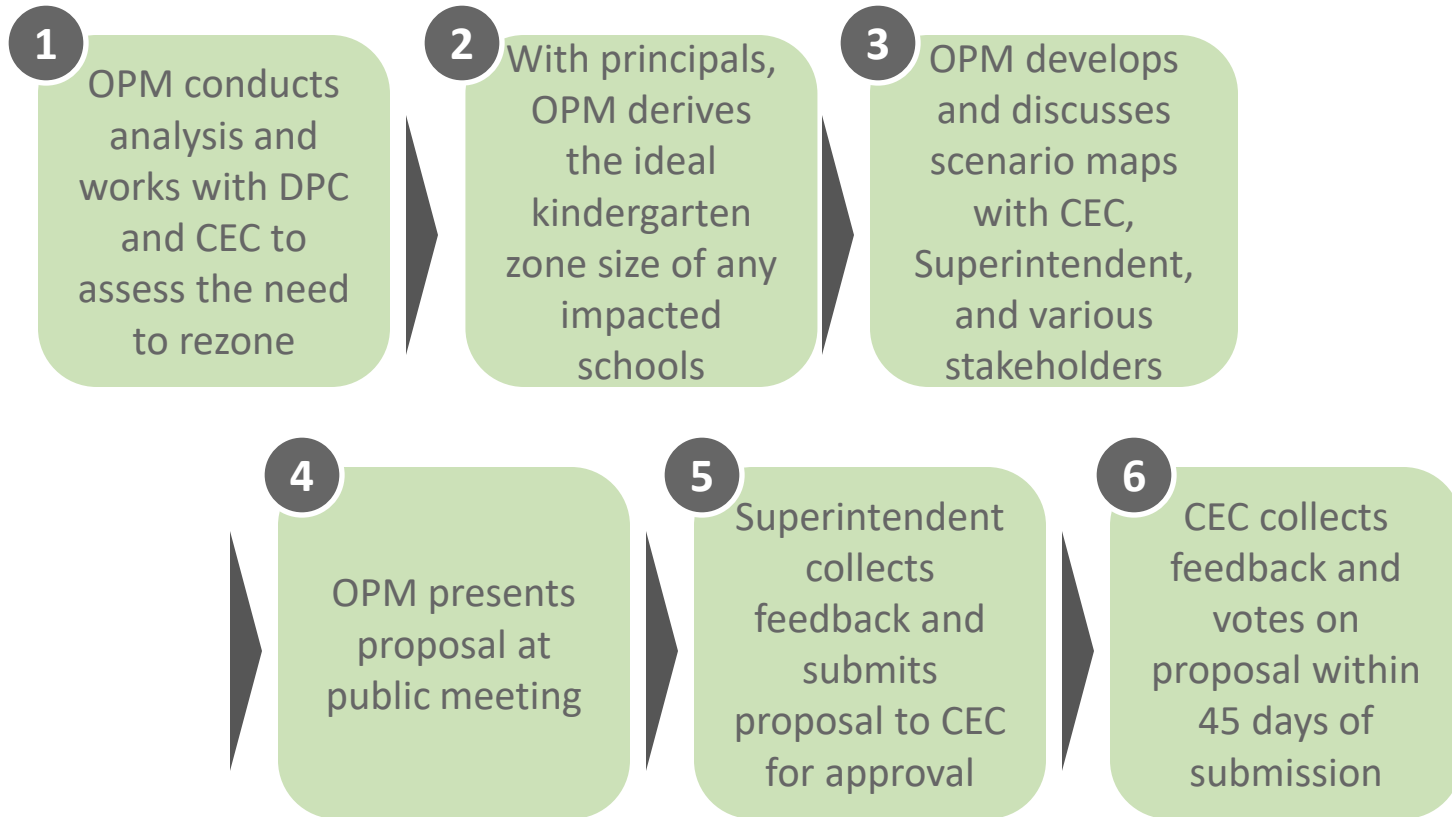
Dennis M. Walcott, Chancellor

December 6, 2011

Table of Contents

I.	Overview of the Rezoning Process	3
II.	Guiding Policies and Principles	4
III.	Methodology	5-6
IV.	Comprehensive Map of Proposed Zone Lines	7
V.	Rationale for Rezoning	8
VI.	Rezoning – Region A	
a.	Schools Affected by Rezoning	9
b.	Proposed Zone Lines	10
c.	Impact of Rezoning	11
VII.	Rezoning – Region B	
a.	Schools Affected by Rezoning	12
b.	Proposed Zone Lines	13
c.	Impact of Rezoning	14
VIII.	Rezoning – Region C	
a.	Schools Affected by Rezoning	15
b.	Proposed Zone Lines	16
c.	Impact of Rezoning	17
IX.	Comprehensive Map of Proposed Zone Lines	18
X.	Contact Information for Comments	19
XI.	Appendix	
a.	Admissions Process	20
b.	Planned Section Counts	21-23
c.	Zoned Percentage Rates	24-26
d.	Current Map of DOE District 9 Elementary Schools	27

Overview of Rezoning Process



Guiding Policies and Principles

- Pending approval by the CEC, the proposed changes would take effect for the 2012-2013 academic year.
- Pending approval by the CEC, the proposed changes would only impact incoming kindergarten or new students to the system. All currently enrolled student may remain in their school until graduation.
- Sibling enrollment policies would remain in effect. Children currently living in the affected zones who would be zoned to another school as a result of this proposal would retain their enrollment status as an in-zone sibling as long as they have an older sibling attending the school in grades 1-5 during the year in which the student would enroll in kindergarten.
- See Appendix A for the admissions process as outlined in the Chancellor's regulation A-101.

Methodology – Determining the Target K Zone Size

Seat Supply: What is the capacity of each school?

- The number of possible sections in each building, based on the number of instructional classrooms

Seat Demand: How many students do we anticipate, both from within and outside of the zone?

- Historical kindergarten zone size
- Historical kindergarten waitlists and capping activity
- Historical average class sizes
- Historical zone retention rate – the number of students who live in the zone and attend their zoned school
- Historical un-zoned rate – the number of students who live outside the zone attend a given school
- Current and future housing projects



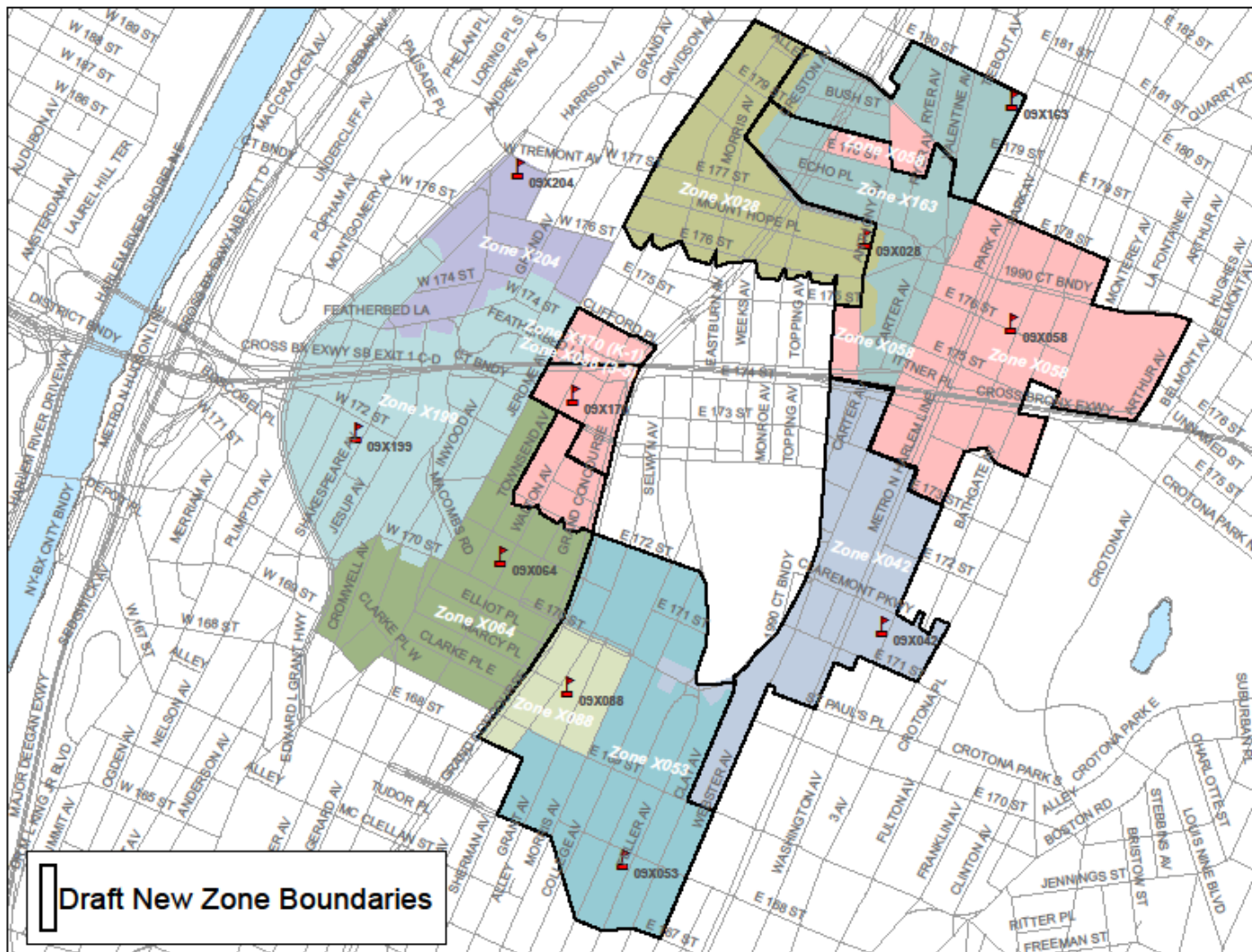
Methodology – Determining the Zone Lines

To the extent possible, the proposed zone lines were drawn in a way that:

- Achieves the targeted kindergarten zone size for all affected schools
- Addresses concerns of the local community
- Avoids forcing students to cross geographic barriers (e.g. highways , district lines, etc.)
- Corrects zone regions which are not contiguous
- Aligns zone lines and feeder patterns to community practice



Comprehensive Map of Proposed Zone Lines



Rationale for Rezoning

There are three different areas of schools impacted by the current proposal. They have been broken into three different “regions.”

Region A: P.S. 170, P.S. 204, P.S. 199, P.S. 64

- Students who are zoned to P.S. 170 for kindergarten through second grades are currently zoned to P.S. 58 for third through fifth grades.
 - This requires greater travel than most other students in the district.
 - This also requires students to go past several other zoned DOE schools on their way to P.S. 58.

Region B: P.S. 163, P.S. 28, P.S. 58

- P.S. 163 is overcrowded, while nearby schools have the capacity to serve more students.
- P.S. 58’s current zone is made up of four different areas which are not contiguous. It is the only District 9 zoned school without a contiguous zone.

Region C: P.S. 88, P.S. 53, P.S. 42

- The DOE tries to increase choice for families. One method is to allow for a choice between an Early Childhood Center (ECC) like P.S. 88 that serves younger grades and an Elementary School like P.S. 53 that serves all elementary grades.



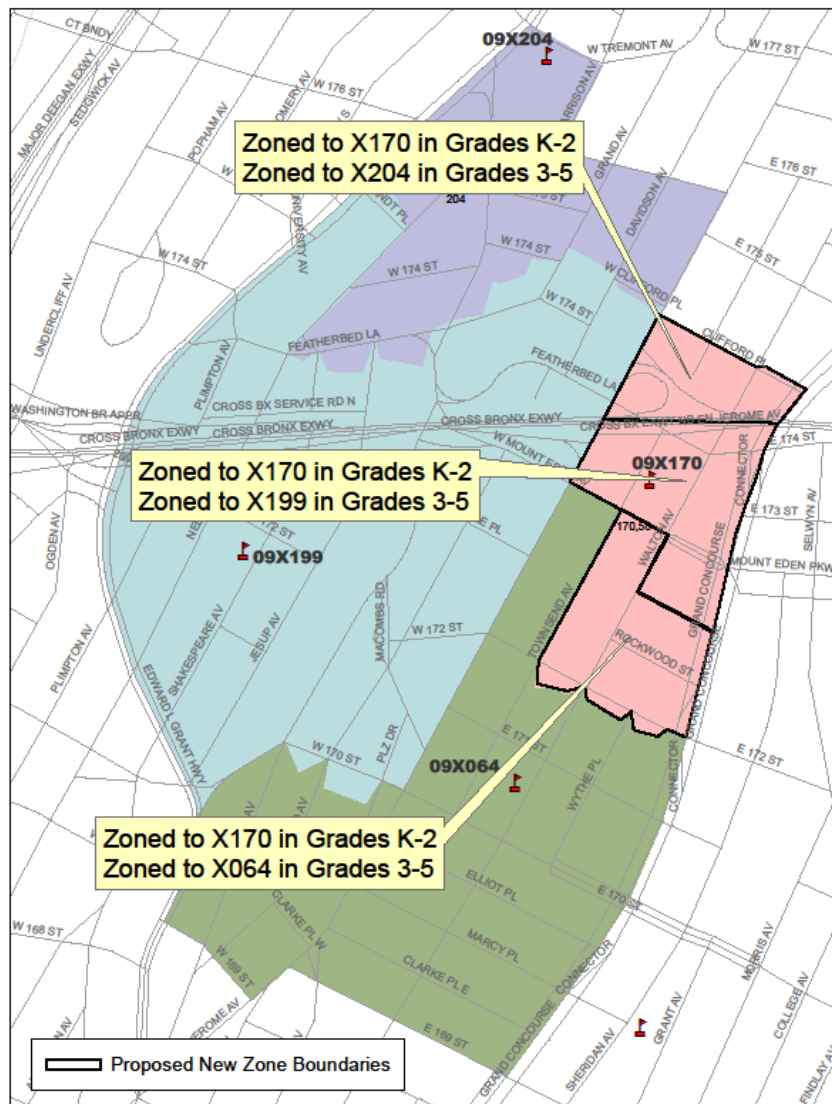
Schools Affected by Rezoning – Region A

Rationale:

- Students who are zoned to P.S. 170 for kindergarten through second grades are currently zoned to P.S. 58 for third through fifth grades.
 - This requires greater travel than most other students in the district.
 - This also requires students to go past several other zoned DOE schools on their way to P.S. 58.

DBN	School Name	Grade Span	Total Enrollment ¹	Total Org Capacity ²	Utilization %
09X204*	P.S. 204 Morris Heights	K-5	456	503	91%
09X199*	P.S. 199 The Shakespeare School	K-5	737	893	83%
09X170	P.S. 170	K-2	260	177	147%
09X064	P.S. 64 Pura Belpre	K-5	886	860	103%

Proposed Zone Lines – Region A



- P.S. 170: 1598 Townsend Ave
- P.S. 204: 1780 Dr. Martin Luther King Jr. Blvd
- P.S. 199: 1449 Shakespeare Ave
- P.S. 64: 1425 Walton Ave

Impact of Rezoning – Region A

DBN	Current 3 rd Grade Zone Size ¹	Projected 3 rd Grade Zone Size ²	Change in 3 rd Grade Zone Size	Current 3 rd Grade Enrollment ¹	Projected 3 rd Grade Enrollment	Current Utilization ⁷	Projected Utilization
09X204*	67	78	↑11	64	69-75 ⁴	91%	95%-100%
09X199*	152	191	↑27	107	120-130 ⁵	83%	90%-95%
09X064	242	265	↑32	152	166-178 ⁶	103%	105%-115%
09X058	(K) 50	(K) 103	(K) ↑53	(K) 57	(K) 94-102 ⁷	64%	80%-85%
	(3) 123	(3) 53	(3) ↓70 ³	(3) 89	(3) 87-94 ⁵		

(1) Based on unaudited register as of October 31, 2011

(2) Based on geocoding students enrolled as of October 31, 2011

(3) The changes in the kindergarten zone size do not reflect the reduction in the school-wide zone impacted by the rezoning in region B.

(4) Based on average class sizes of 23-25 for 3rd Grade

(5) Based on average class sizes of 22-24 for 3rd Grade and 10 for Self-Contained sections

(6) Based on average class sizes of 26-28 for 3rd Grade and 10 for Self-Contained sections

(7) Based on average class sizes of 21-23 for K and 10 for Self-Contained sections

(8) Based on the 2010 Blue Book Capacity

* This school offers a pre-kindergarten program.

Schools Affected by Rezoning – Region B

Rationale

- P.S. 163 is overcrowded, while nearby schools have the capacity to serve more students.
- P.S. 58's current zone is made up of four different areas which are not contiguous. It is the only District 9 zoned school without a contiguous zone.

DBN	School Name	Grade Span	Total Enrollment ¹	Total Org Capacity ²	Utilization %
09X163	P.S. Arthur A. Schomburg	K-5	668	507	132%
09X058	P.S. 58	K-5	441	694	64%
09X028*	P.S. 28 Mount Hope	K-5	751	930	81%

(1) Based on unaudited register as of October 31, 2011

(2) Based on the 2010 Blue Book Capacity

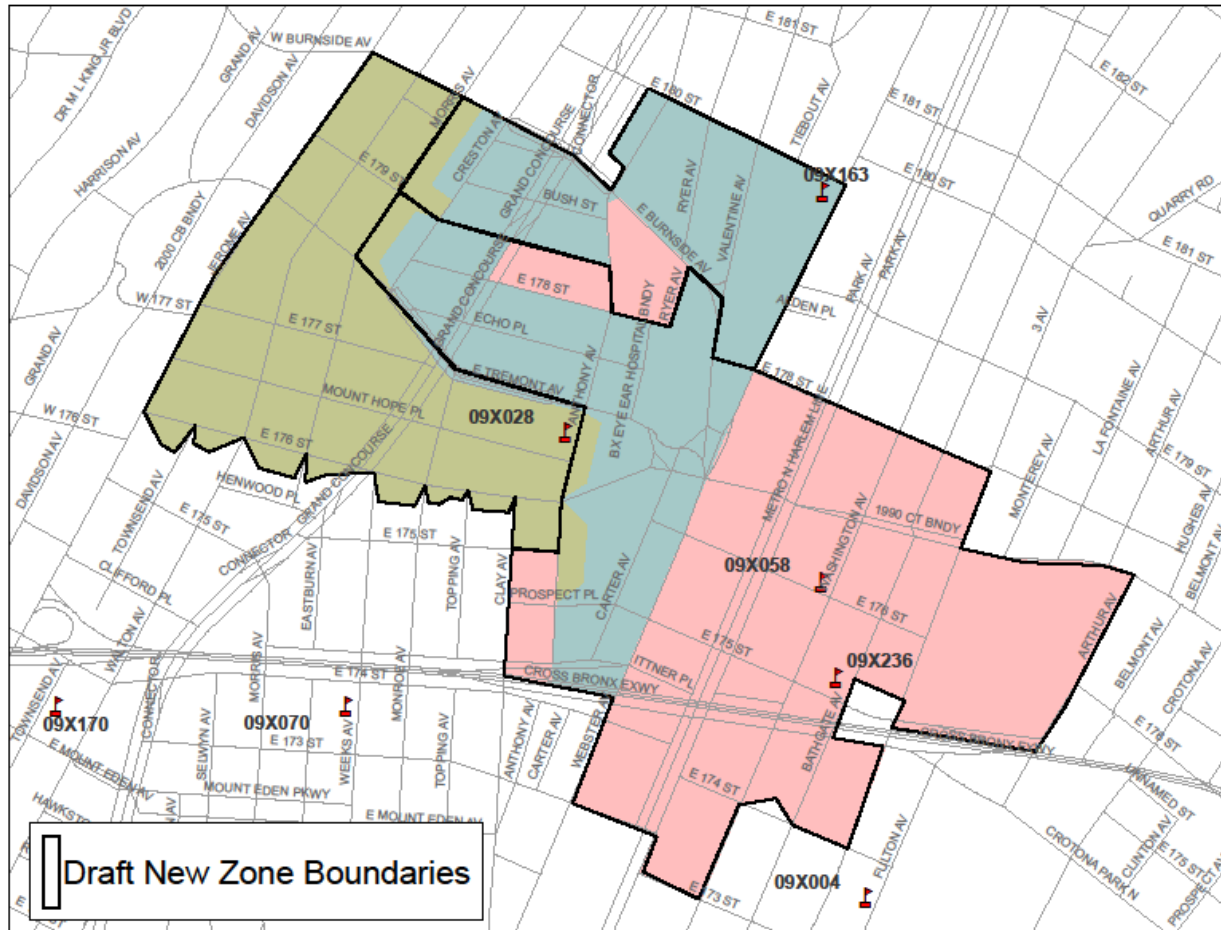
* This school offers a pre-kindergarten program.



Department of
Education

Dennis M. Walcott, Chancellor

Proposed Zone Lines – Region B



- P.S. 163: 2075 Webster Ave
 - P.S. 58: 459 E 176th St
 - P.S. 28: 1861 Anthony Ave
- Not impacted by proposal:
- P.S. 236: 1871 Walton Ave

Impact of Rezoning – Region B

DBN	Current K Zone Size ¹	Projected K Zone Size ²	Change in K Zone Size	Current K Enrollment ¹	Projected K Enrollment ³	Current Utilization ⁶	Projected Utilization
09X163	145	94	↓51	91	68-88 ⁴	132%	95%-115%
09X058	(K) 50	(K) 103	(K) ↑53 ³	(K) 57	(K) 94-102 ⁵	64%	80%-85%
	(3) 123	(3) 53	(3) ↓70	(3) 89	(3) 123 ⁶		
09X028*	148	146	↓2	85	80-105 ⁴	81%	80%-85%

(1) Based on unaudited register as of October 31, 2011

(2) Based on geocoding students enrolled as of October 31, 2011

(3) The changes in the kindergarten zone size do not reflect the reduction in the school-wide zone impacted by the rezoning in region A.

(4) Based on average class sizes of 16-21 for K

(5) Based on average class sizes of 21-23 for K and 10 for Self-Contained sections

(6) Based on average class sizes of 23-25 for 3rd Grade and 10 for Self-Contained sections

(7) Based on the 2010 Blue Book Capacity

* This school offers a pre-kindergarten program.

Schools Affected by Rezoning – Region C

Rationale

- The DOE tries to increase choice for families. One method is to allow for a choice between an Early Childhood Center (ECC) like P.S. 88 that serves younger grades and an Elementary School like P.S. 53 that serves all elementary grades.

DBN	School Name	Grade Span	Total Enrollment ¹	Total Org Capacity ²	Utilization %
09X088	P.S. 88 S. Silverstein Little Sparrow School	K-3	221	224	99%
09X053*	P.S. 53 Basheer Quisim	K-5	1,374	1,431	96%
09X042*	P.S. 42 Claremont	K-5	500	641	78%

(1) Based on unaudited register as of October 31, 2011

(2) Based on the 2010 Blue Book Capacity

* This school offers a pre-kindergarten program.



Department of
Education

Dennis M. Walcott, Chancellor

Proposed Zone Lines – Region C



- P.S. 88: 1340 Sheridan Ave
- P.S. 53: 360 E 168th St
- P.S. 42: 1537 Washington Ave

Impact of Rezoning – Region C

DBN	Current K Grade Zone Size ¹	Projected K Grade Zone Size ²	Change in K Zone Size	Current K Enrollment ¹	Projected K Enrollment	Current Utilization ⁵	Projected Utilization
09X088*	84	315	Becomes Shared Zone	50	48-50 ³	99%	90%-105%
09X053	231		↑4	235	216-225 ³	96%	90%-100%
09X042	105	101	↓4	82	76-84 ⁴	78%	75%-80%

(1) Based on unaudited register as of October 31, 2011

(2) Based on geocoding students enrolled as of October 31, 2011

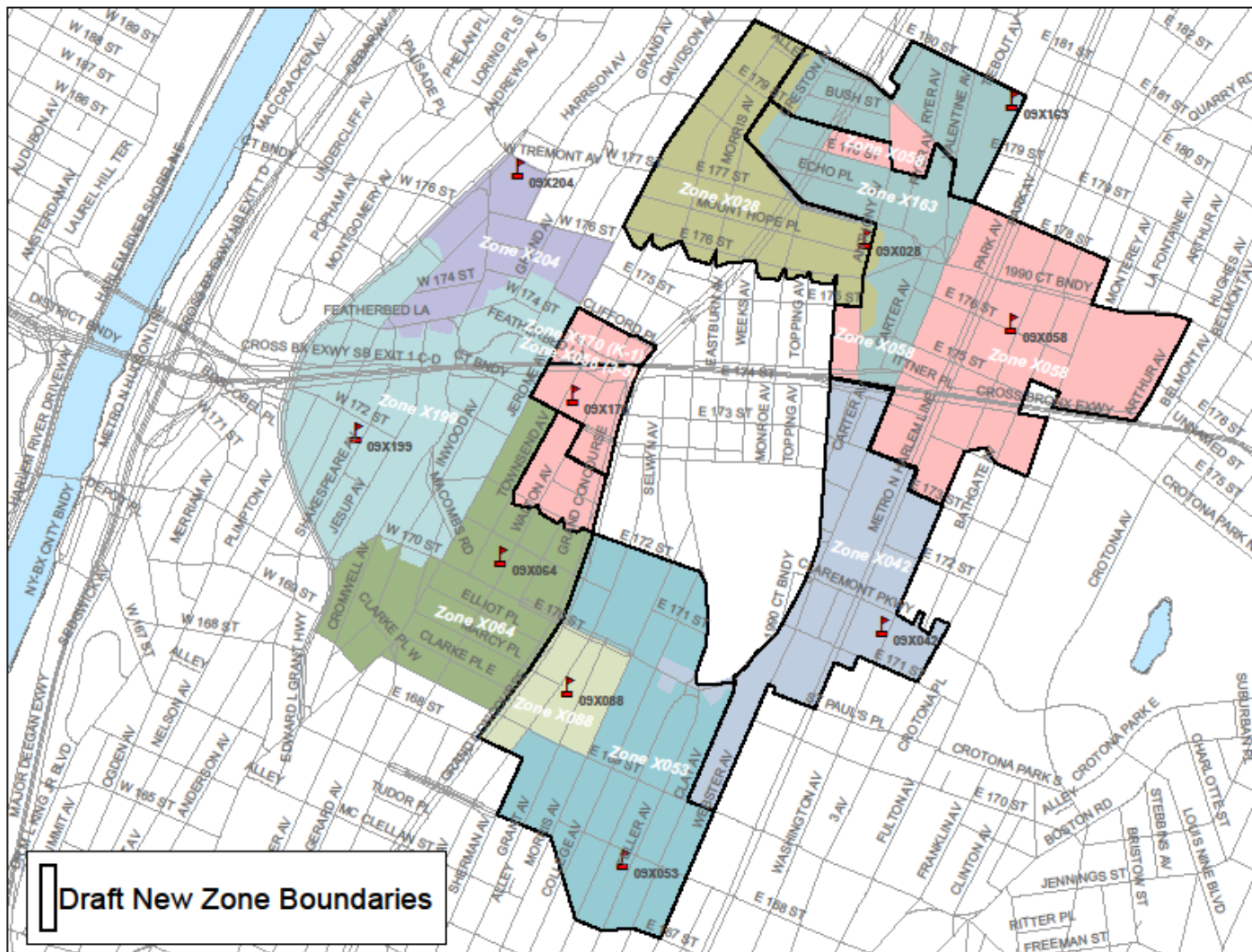
(3) Based on average class sizes of 24-25 for kindergarten

(4) Based on average class sizes of 19-21 for kindergarten

(5) Based on the 2010 Blue Book Capacity

* This school offers a pre-kindergarten program.

Comprehensive Map of Proposed Zone Lines



Contact Information for Comments

Community
Superintendent

Phone: (718) 842 - 0138
Email: DEsposito@schools.nyc.gov
Subject: District 9 Zoning

CEC
Community
Education Council

Email: CEC9@schools.nyc.gov
Subject: District 9 Zoning

OPM
Office of Portfolio
Management

Email: BronxZoning@schools.nyc.gov
Subject: District 9 Zoning



Appendix A – Admissions Process

Students are (and would continue to be) enrolled in New York City elementary schools by the following priority:

- 1** - Zoned students with verified siblings who will be enrolled in grades 1-5 in the school as of September 2011
- 2** - Zoned students without siblings applying to the zoned school
- 3** - Non-zoned students with verified siblings who will be enrolled in grades 1-5 in the school as of September 2011:
 - a. Within District first, then
 - b. Out of District
- 4** - Non-zoned students without siblings:
 - a. Within District first, then
 - b. Out of District



Appendix B – Planned Section Counts – Region A

GE/ICT

DBN	Pre-K	Kindergarten	Grades 1-2	Grades 3-5	Self-Contained
09X204	2	3	3	3	2
09X199	3	5	5	5	4
09X058	-	4	3 - 4	3 - 4	8
09X064	-	6	6	6	2



Appendix B – Planned Section Counts – Region B

GE/ICT

DBN	Pre-K	Kindergarten	Grades 1-5	Self-Contained
09X163	-	4	4	6
09X058	-	4	3 - 4	8



Appendix B – Planned Section Counts – Region C

GE/ICT

DBN	Pre-K	Kindergarten	Grades 1-3	Grades 4-5	Self-Contained
09X088	-	2	3.5	-	2
09X053	3	9	8	11	5
09X042	2	4	3.5	4	1

Appendix C – Zoned Retention Rates – Region A

DBN	Capped	K-Waitlist	Current 3 rd Grade Zone Retention Rate	Planned 3 rd Grade Zone Retention Rate	Current Zoned Enrollment Rate	Planned Zoned Enrollment Rate
09X204*	N	N	66%	66%	69%	69%
09X199*	N	N	61%	61%	87%	87%
09X058	N	N	53%	60%	49%	69%
09X064	N	N	49%	49%	78%	78%

- (1) The current rates are based on the unaudited register as of October 31, 2011.
- (2) Planned rates are based on various factors, including but not limited to the historical number of zoned kindergarten students that were waitlisted or overflowed due to capping, as well as an assumed reduction in the number of out-of-zoned enrollment.

Appendix C – Zoned Retention Rates – Region B

DBN	Capped	K-Waitlist	Current K Zone Retention Rate	Planned K Zone Retention Rate	Current K Zoned Enrollment Rate	Planned K Zoned Enrollment Rate
09X163	N	N	59%	59%	95%	95%
09X058	N	N	53%	60%	49%	69%

- (1) The current rates are based on the unaudited register as of October 31, 2011.
- (2) Planned rates are based on various factors, including but not limited to the historical number of zoned kindergarten students that were waitlisted or overflowed due to capping, as well as an assumed reduction in the number of out-of-zoned enrollment.

Appendix C – Zoned Retention Rates – Region C

DBN	Capped	K-Waitlist	Current K Zone Retention Rate	Planned K Zone Retention Rate	Current K Zoned Enrollment Rate	Planned K Zoned Enrollment Rate
09X088	N	N	62%	62%	88%	88%
09X053	N	N	66%	66%	68%	68%
09X042	N	N	52%	52%	66%	66%

- (1) The current rates are based on the unaudited register as of October 31, 2011.
- (2) Planned rates are based on various factors, including but not limited to the historical number of zoned kindergarten students that were waitlisted or overflowed due to capping, as well as an assumed reduction in the number of out-of-zoned enrollment.

Appendix D – Current Map of District 9 DOE Elementary Schools

