



Presentation to CEC 9 for the Rezoning of P.S. 70, the Walton Avenue School, and Lucero Elementary School



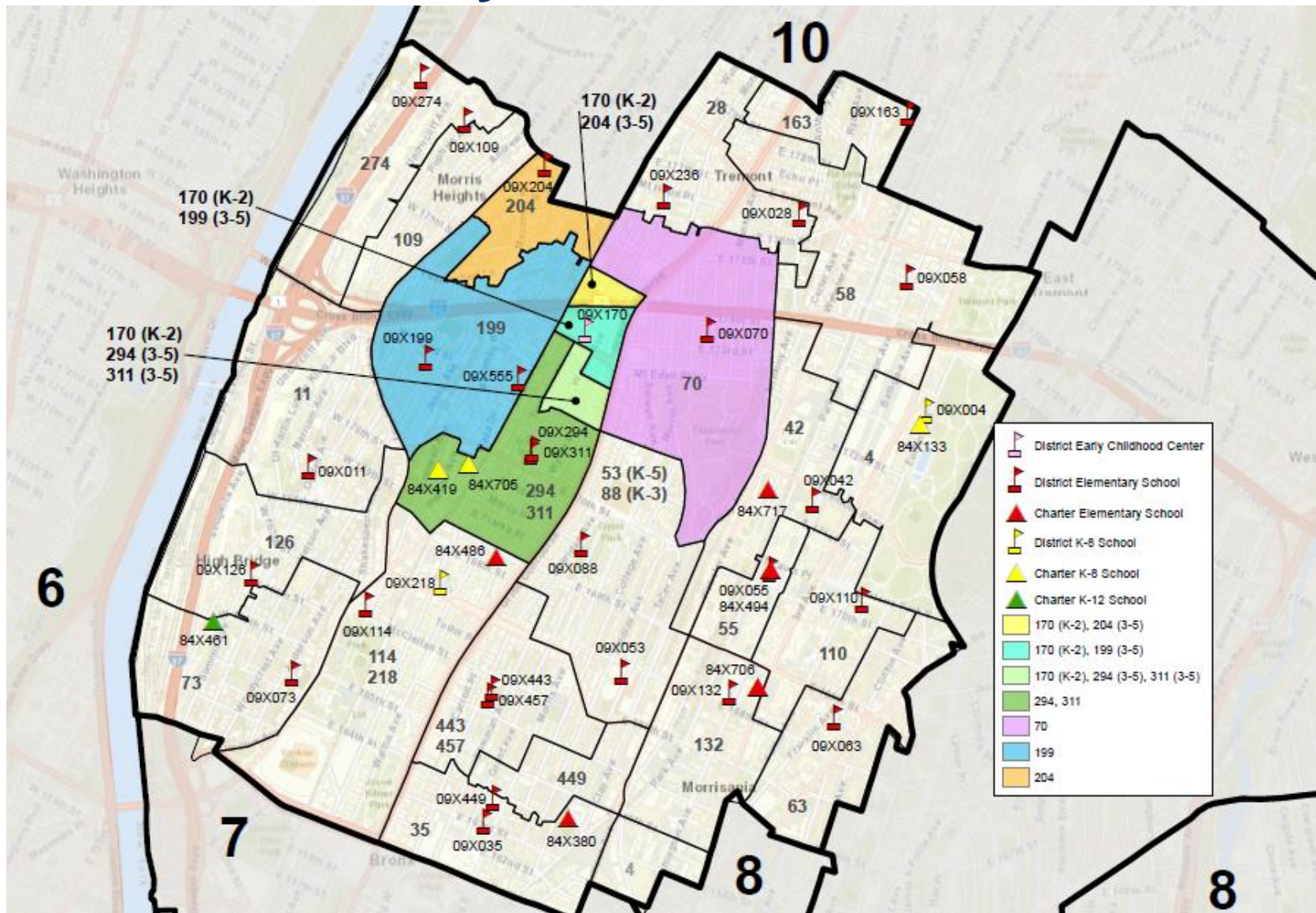
Office of District Planning

March 19, 2019

AGENDA

- Overview of Current Elementary School Zones
- Elementary School Needs in Mount Eden/Claremont
- Rezoning Proposal
- Rezoning Methodology, Policies, and Timeline
- Next Steps
- Questions & Answers
- Appendix

Current Elementary School Zones



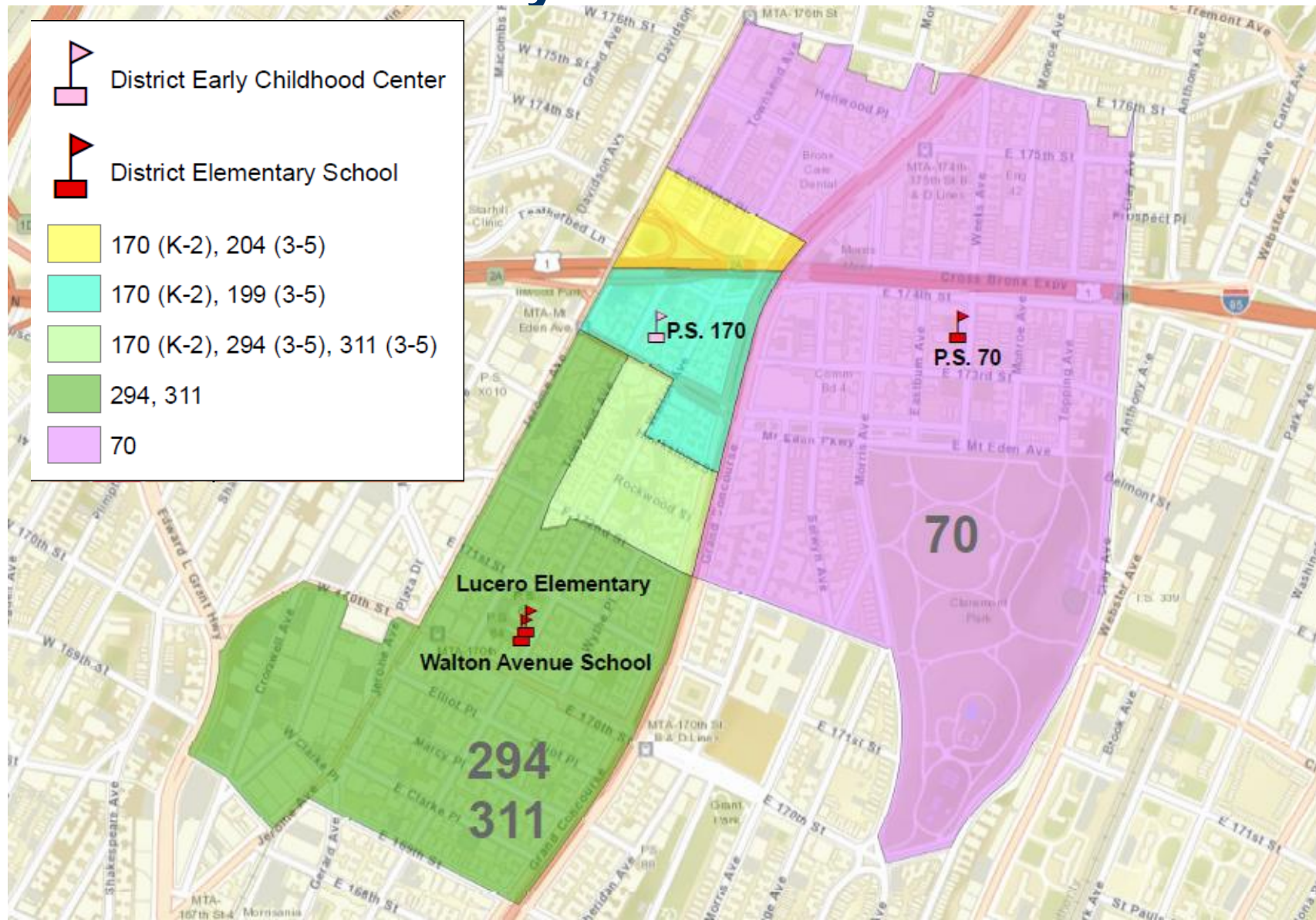
Elementary School Overview: Walton Avenue School/Lucero Elementary School

- The Walton Avenue School (09X294) and Lucero Elementary School (09X311) are zoned elementary schools serving grades K-5.
- The Walton Avenue School and Lucero Elementary School share a zone and are co-located in building X064, located at 1425 Walton Avenue.
- Both schools utilize the Transportable Classroom Units (TCUs) at X064. Building X064, which has a total of 2 TCUs, is operating at an overall utilization rate of 129%.
- Building X064 experiences capping and overflow due to overcrowding. Students who are unable to enroll at The Walton Avenue School due to capping are accommodated at Lucero Elementary School, and both schools overflow to P.S. 70 Max Schoenfeld (09X070).

Enrollment and Zoning in Mount Eden and Claremont

- P.S. 170 is a neighboring Early Childhood Center (ECC) serving students in grades K-2 in building X170, located at 1598 Townsend Avenue.
- A portion of the students (25%) who attend P.S. 170 are zoned to the Walton Avenue School and Lucero Elementary School for grades 3-5.
 - This contributes to the overcrowding in building X064.
- Other students at P.S. 170 are zoned to P.S. 199 or P.S. 204 for grades 3-5.

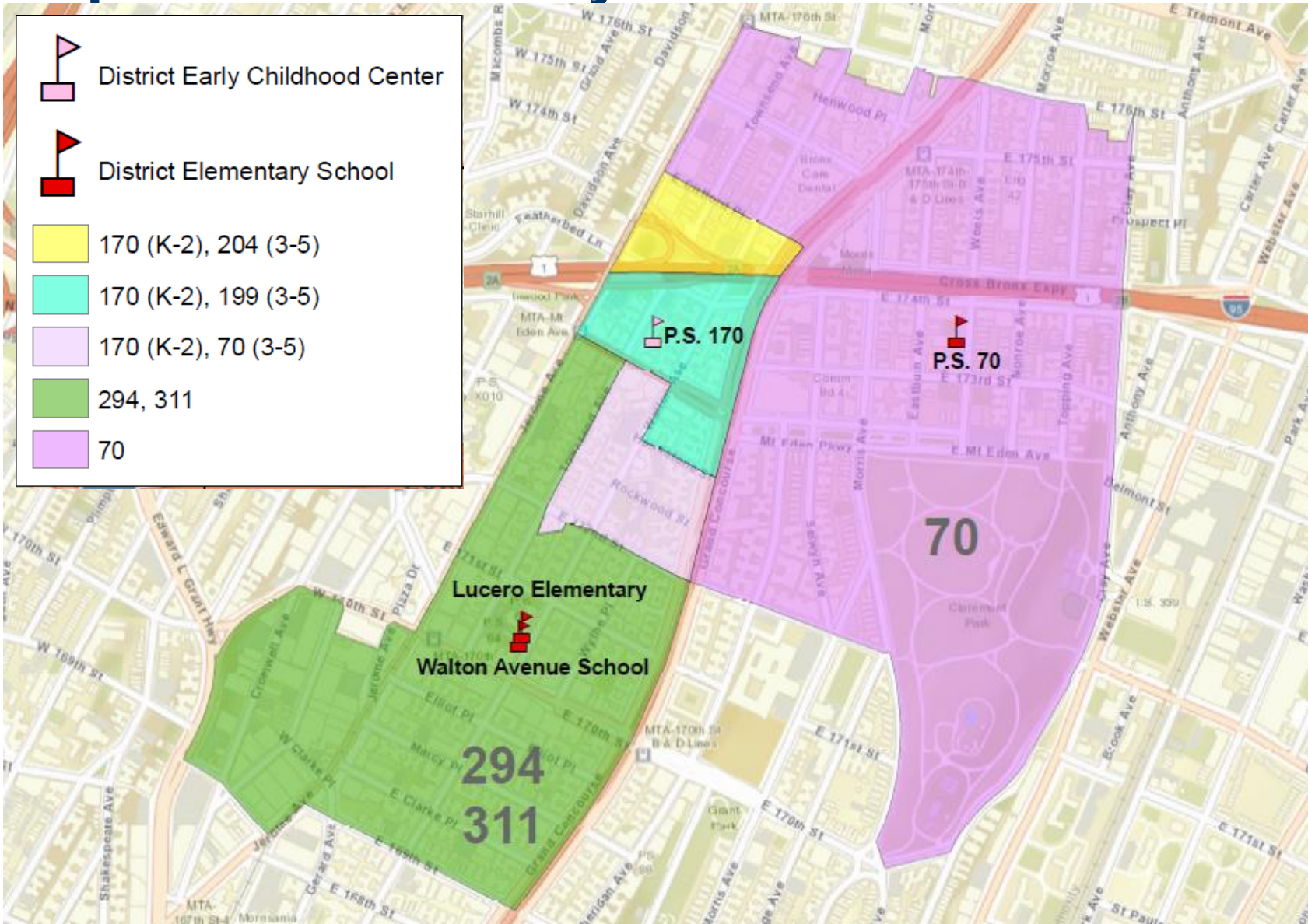
Current Elementary School Zone Lines



Proposed Rezoning

- The proposed rezoning would shift the zone lines such that students currently zoned to P.S. 170 for grades K-2 and Walton Avenue School/ Lucero Elementary School for grades 3-5 would be zoned instead to P.S. 70 for grades 3-5.
- P.S. 70 is currently operating at 84% utilization in building X070 and has space to accommodate additional students.
- This rezoning would improve learning conditions and educational access by:
 - Reducing over-utilization at building X064; and
 - Reducing the need for Walton Avenue School and Lucero Elementary School to cap and overflow students.
- P.S. 170, P.S. 199, and P.S. 204 will not be affected.

Proposed Elementary School Zone Lines



Impact on 3rd Grade Zone Size

DBN	School Name	Current 3 rd Grade Zone Size	Projected 3 rd Grade Zone Size ¹	Change
09X294	The Walton Avenue School	293	255-265	Decrease
09X311	Lucero Elementary School			
09X070	P.S. 70 Max Schoenfeld	285	315-325	Increase

(1) Projected zone size is when the rezoning is at scale.

Impact on School Enrollment

DBN	School Name	Current 3 rd Grade Enrollment ¹	Projected 3 rd Grade Enrollment ²	Current Total Enrollment ¹	Projected Total Enrollment ²
09X294	The Walton Avenue School	93	80-90	502	450-510
09X311	Lucero Elementary School	85	60-70	417	330-390
09X070	P.S. 70 Max Schoenfeld	197	205-215	1,104	1,120-1,180 ³

(1) Current enrollment is based on 2018-2019 Audited Register as of October 31, 2018.

(2) Projected enrollment is when the rezoning is at scale.

(3) Projected enrollment includes 1 3-K class and 1 pre-K class, which are expected to be added independent of this proposed rezoning.

Impact on Building Utilization

DBN	School Name	Capacity ¹	Current Building Utilization ²	Projected Building Utilization	Change
09X294	The Walton Avenue School	714	129%	109-126%	Decrease
09X311	Lucero Elementary School				
09X070	P.S. 70 Max Schoenfeld	1,307	84%	86-90% ³	Increase

(1) Based on 2017-2018 Blue Book.

(2) Utilization based on the 2018-2019 Audited Register and 2017-2018 Blue Book Capacity.

(3) Projected utilization for P.S. 70 includes one 3-K class and one pre-K class, which are expected to be added in 2019-2020 independent of this proposed rezoning.

Methodology:

Determining the Target Zone Size

Seat Supply: What is the capacity of each school?

Specifically, how many instructional sections (i.e. classes) and how many students can each building accommodate?

Seat Demand: How many students do we anticipate?

We assess demand – both from inside and outside the zone – based on:

- The historical number of third grade students living in the zone;
- Historical capping activity;
- Historical average class sizes;
- Historical zone retention rates and historical zone enrollment rates; and
- Historical articulation patterns.

Methodology:

Determining the Zone Lines

To the extent possible, we draw zone lines in a way that:

- Contains appropriate number of residents for a school's size, based on recent public school enrollment trends
- Keeps each school geographically within the zone boundaries
- Factors we take into consideration:
 - New residential construction
 - Diversity
 - Geographic barriers
 - Travel distance

Standard Policies for Rezoning

When: Pending proposal submission and approval by the CEC, any proposed rezoning changes would take effect for the 2019-2020 academic year.

Who: Proposed changes would primarily impact articulating third grade students, and new students to the system. All currently enrolled students in grades 3-5 may remain in their school until graduation.

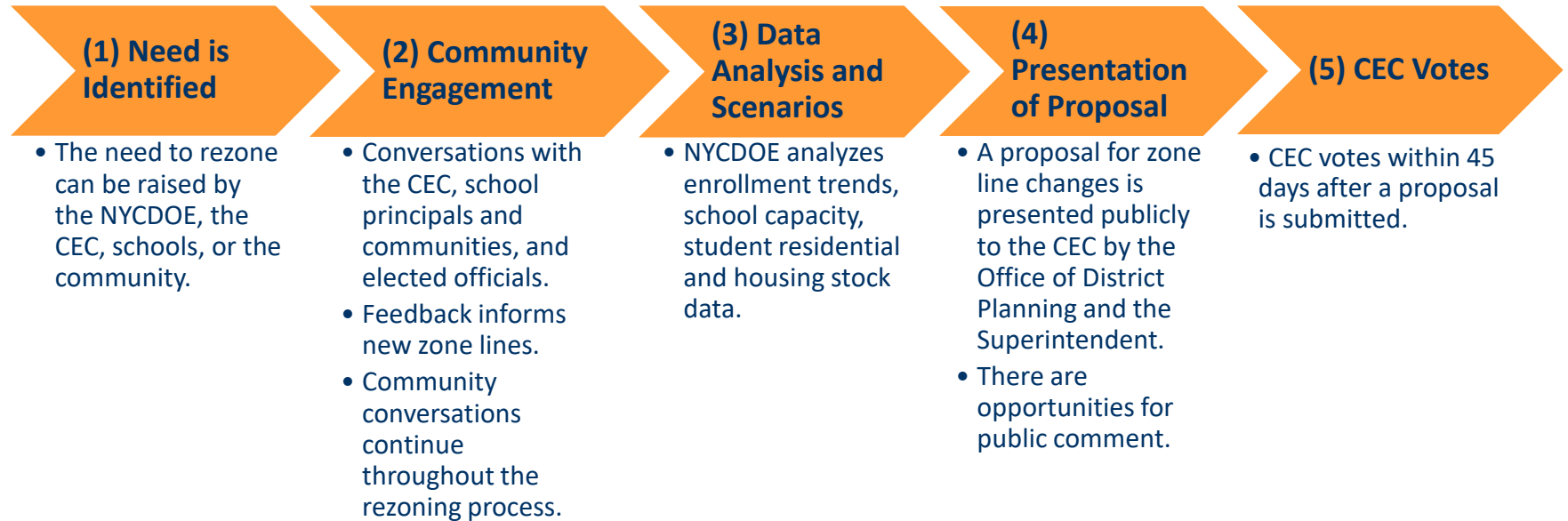
Standard Admissions Policies: All impacted schools will continue to admit students according to Chancellor's regulation A-101.

Standard Busing Policies: The Office of Pupil Transportation (OPT) will follow standard procedure to determine bus service eligibility of general education students, as outlined by Chancellor's regulation A-801.

Sibling Grandfathering

- Children impacted by this rezoning entering third grade with a zoned sibling at the Walton Avenue School or Lucero Elementary School will maintain their zoned sibling priority to those schools.

Rezoning Process and Timeline



Timeline for 2019 Implementation



Next Steps

- The NYCDOE collects feedback and answer questions from the community.
- CEC 9 plans to vote on the proposal at its April 16, 2019 meeting at P.S. 109 Sedgwick, located at 1771 Popham Avenue, Bronx, NY 10453.

For Feedback or More Information

Community Education Council 09

CEC09@schools.nyc.gov

Office of District Planning

BronxZoning@schools.nyc.gov

Bronx District Planning

<https://www.schools.nyc.gov/about-us/school-planning/district-planning>

Feedback, Questions & Answers

Appendix

- A. Section Counts
- B. Average Class Size
- C. Zone Demand
- D. Zone Demographics – Ethnicity
- E. Zone Demographics – Free and Reduced Lunch

Appendix A.1:

2018-2019 Elementary School Section Counts

School Name	3K	PK	K	Grade 3	Grades 1-5	Self-Contained
The Walton Avenue School	0	0	3	2-3	2-3	4
Lucero Elementary School	0	0	2	3	2-3	2
P.S. 70 Max Schoenfeld	0	0	6	7	7-8	8

Appendix A.2:

Projected Elementary School Section Counts

School Name	3K	PK	K	Grade 3	Grades 1-5	Self-Contained
The Walton Avenue School	0	0	3	2-3	2-3	4
Lucero Elementary School	0	0	2	2	2	2
P.S. 70 Max Schoenfeld ^{1,2}	1	1	6	7	7	8

(1) P.S. 70 is expected to add one 3-K class and one pre-K class independent of this proposed rezoning.

(2) Projections for P.S. 70 are based on projected articulation of current enrollment. P.S. 70 is expected to be able to accommodate additional students it receives as a result of this proposed rezoning within the above planned sections.

Appendix B.1:

2018-2019 Average Class Sizes

School Name	3K	PK	K	Grade 3	Grades 1-5	Self-Contained
The Walton Avenue School	0	0	24	32	25-32	11
Lucero Elementary School	0	0	24	27	27-28	11
P.S. 70 Max Schoenfeld	0	0	22	25	23-25	12

Appendix B.2:

Projected Average Class Sizes

School Name	3K	PK	K	Grade 3	Grades 1-5	Self-Contained
The Walton Avenue School	0	0	23-24	29-30	29-30	10-12
Lucero Elementary School	0	0	23-24	29-30	27-30	10-12
P.S. 70 Max Schoenfeld	14-15	16-18	21-23	27-28	27-28	11-12

(1) Includes GE/ICT only.

Appendix C:

3rd Grade Zone Demand

School Name	Current Zone Retention	Projected Zone Retention	Current Zone Enrollment	Projected Zone Enrollment
The Walton Avenue School ¹	26%	28-33%	81%	88-92%
Lucero Elementary School ¹	22%	20-25%	75%	88-92%
P.S. 70 Max Schoenfeld	54%	50-55%	78%	77-82%

(1) The Walton Avenue School and Lucero Elementary School share a zone.

Appendix D.1:

3rd Grade Zone Demographics

Current Ethnicity

School Name	Asian	Black	Hispanic	White	Other
The Walton Avenue School	0%	19%	78%	2%	0%
Lucero Elementary School					
P.S. 70 Max Schoenfeld	0%	24%	74%	2%	0%

Appendix D.2:

3rd Grade Zone Demographics

Projected Ethnicity

School Name	Asian	Black	Hispanic	White	Other
The Walton Avenue School	0-10%	10-20%	75-85%	0-10%	0-10%
Lucero Elementary School					
P.S. 70 Max Schoenfeld	0-10%	20-30%	65-75%	0-10%	0-10%

Appendix E:

3rd Grade Zone Demographics

Free & Reduced Lunch or HRA Eligible

School Name	Current % Eligible	Projected % Eligible
The Walton Avenue School	95%	90-100%
Lucero Elementary School		
P.S. 70 Max Schoenfeld	94%	90-100%