

# District I I

# Data Summary

2026-2027 Strategic Planning Data Considerations

## Contents

Citywide Enrollment	I
District Enrollment	2
Residential Population and District Retention	3
District ES and MS Enrollment Model ("In-Out Model")	5
Articulation Trends	6
School Counts by Enrollment Range	7
Enrollment vs. Capacity	8
Building Utilization	8
District 75	9
District Demographics	10
Special Programs	10

## CITYWIDE ENROLLMENT (DISTRICT AND CHARTER), 2015-16 TO 2024-25

New York City Public Schools (NYCPS) is committed to thoughtful collaboration with districts and communities to collectively strengthen schools, support students and families, and respond to demographic and population changes in New York City.



Source: Audited Register and Charter Headcount; includes district and charter school enrollment only

- Enrollment in D1-32 schools decreased slightly in 2024-2025, remaining approximately stable compared to the steeper declines following the onset of the COVID-19 pandemic.
- Citywide, K-12 enrollment in District 1-32 schools and charter schools has declined by about 10% since its peak in the 2016-2017 school year.

## DISTRICT ENROLLMENT

District 11 Enrollment by Grade Level and Year (District Schools Only)

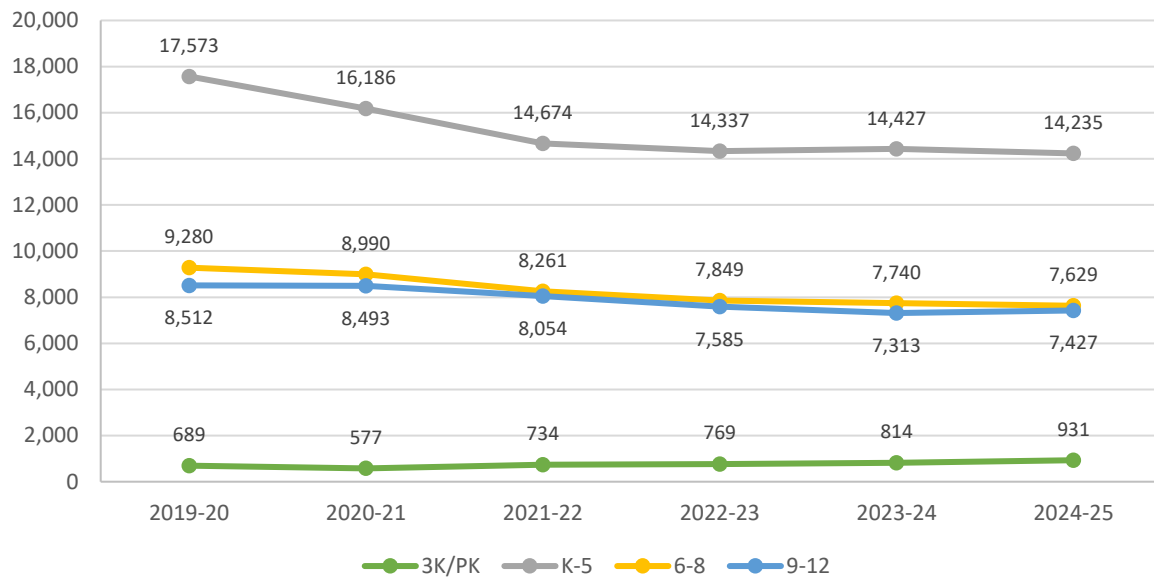


Table 1: District 11 Enrollment - 2019-20 to 2024-25

	2019-20	2020-21	2021-22	2022-23	2023-24	2024-25	1yr Change	5yr Change
<b>3K</b>	-	2	106	129	153	252	65%	-
<b>PK</b>	689	575	628	640	661	679	3%	-1%
<b>K-5</b>	17,573	16,186	14,674	14,337	14,427	14,235	-1%	-19%
<b>6-8</b>	9,280	8,990	8,261	7,849	7,740	7,629	-1%	-18%
<b>9-12</b>	8,512	8,493	8,054	7,585	7,313	7,427	2%	-13%
<b>Total</b>	<b>36,054</b>	<b>34,246</b>	<b>31,723</b>	<b>30,540</b>	<b>30,294</b>	<b>30,222</b>	<b>0%</b>	<b>-16%</b>
<b>% Change YoY</b>		-5.0%	-7.4%	-3.7%	-0.8%	-0.2%		

Table 2: District 11 Entry Grade Enrollment - 2019-20 to 2024-25

	2019-20	2020-21	2021-22	2022-23	2023-24	2024-25	1yr Change	5yr Change
<b>K</b>	2,610	2,360	2,277	2,286	2,297	2,230	-2.9%	-15%
<b>6</b>	3,016	2,888	2,681	2,424	2,521	2,549	1.1%	-15%
<b>9</b>	2,653	2,421	2,413	2,015	1,997	2,083	4.3%	-21%

Source: Audited Register; includes enrollment in district schools only

## RESIDENTIAL POPULATION AND DISTRICT RETENTION

District 11 K-12 Enrollment vs. Residential Population

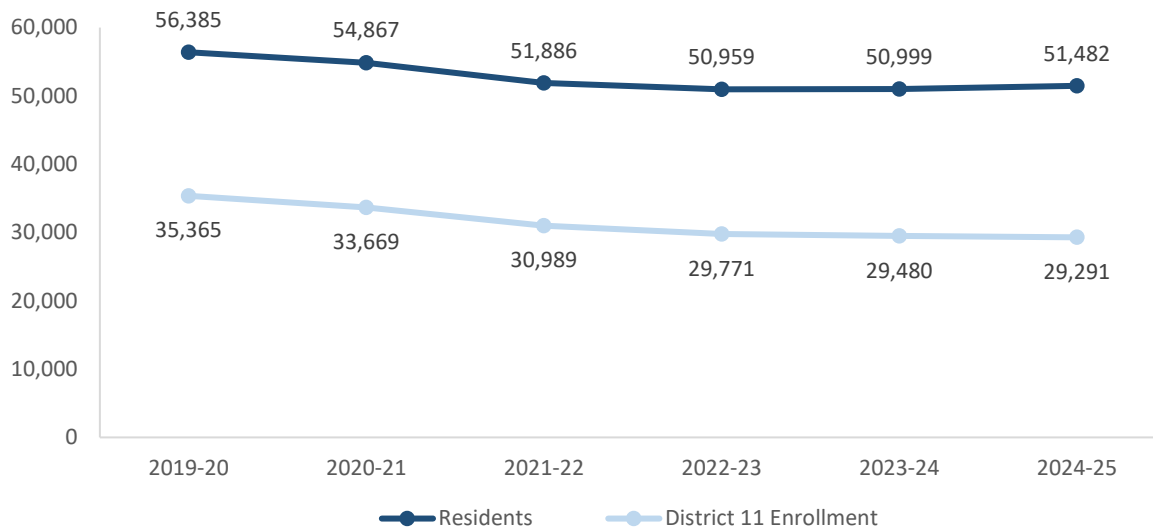


Table 3: District 11 Student Residential Population - 2019-20 to 2024-25

	2019-20	2020-21	2021-22	2022-23	2023-24	2024-25	1yr Change	5yr Change
K-5	25,141	24,089	22,637	22,360	22,474	22,515	0%	-10%
6-8	12,794	12,885	12,100	11,719	11,626	11,612	0%	-9%
9-12	18,450	17,893	17,149	16,880	16,899	17,355	3%	-6%
<b>Total</b>	<b>56,385</b>	<b>54,867</b>	<b>51,886</b>	<b>50,959</b>	<b>50,999</b>	<b>51,482</b>	<b>1%</b>	<b>-9%</b>
<b>% Change YoY</b>		-2.7%	-5.4%	-1.8%	0.1%	0.9%		

- Between 2019-20 and 2024-25, the K-5 residential population in District 11 declined by 10%.
- During this time, the 6-8 residential population in District 11 declined by 9%.
- Citywide, the K-12 residential population declined by 8% since 2019-20.

Source: Residential population is the sum of students attending any NYCPS school, charter or non-public school; as such, this metric will not capture students who are home schooled, have dropped out, or are otherwise not enrolled in these school options.

Table 4: Elementary School District Retention (Where District 11 Residents Enroll in School)

	2019-20	2020-21	2021-22	2022-23	2023-24	2024-25	% of Residents	
							2019-20	2024-25
District 11 Schools	16,828	15,416	14,017	13,715	13,751	13,562	67%	60%
Other District Schools	1,270	1,225	1,063	1,059	1,242	1,333	5%	6%
Charter Schools	4,185	4,606	4,797	4,794	5,003	5,248	17%	23%
Non-Public Schools	2,157	2,121	2,066	2,043	1,689	1,521	9%	7%
Other	701	721	694	749	789	851	3%	4%
<b>Total</b>	<b>25,141</b>	<b>24,089</b>	<b>22,637</b>	<b>22,360</b>	<b>22,474</b>	<b>22,515</b>	<b>100%</b>	<b>100%</b>
% Change YoY		-4.2%	-6.0%	-1.2%	0.5%	0.2%		

Table 5: Middle School District Retention (Where District 11 Residents Enroll in School)

	2019-20	2020-21	2021-22	2022-23	2023-24	2024-25	% of Residents	
							2019-20	2024-25
District 11 Schools	8,702	8,445	7,699	7,232	7,071	6,899	68%	59%
Other District Schools	962	954	906	827	880	900	8%	8%
Charter Schools	1,530	1,921	2,103	2,285	2,309	2,480	12%	21%
Non-Public Schools	1,295	1,230	1,070	1,058	1,036	1,002	10%	9%
Other	305	335	322	317	330	331	2%	3%
<b>Total</b>	<b>12,794</b>	<b>12,885</b>	<b>12,100</b>	<b>11,719</b>	<b>11,626</b>	<b>11,612</b>	<b>100%</b>	<b>100%</b>
% Change YoY		0.7%	-6.1%	-3.1%	-0.8%	-0.1%		

Table 6: Where District 11 Students Live - Grades K-5

	K-5		% of Students	
	2019-20	2024-25	2019-20	2024-25
District 11	16,828	13,562	96%	95%
Other District	745	673	4%	5%
	17,573	14,235	100%	100%

Table 7: Where District 11 Students Live - Grades 6-8

	6-8		% of Students	
	2019-20	2024-25	2019-20	2024-25
District 11	8,702	6,899	94%	90%
Other District	578	730	6%	10%
	9,280	7,629	100%	100%

### Citywide Trends

- Citywide, the average **District Retention Rate** (the percent of students living in a district who enroll in a district school in that district ) is 54% for ES and 49% for MS.
- Citywide, the average **District Enrollment Rate** (the percent of students enrolled in district schools who live in that district) is 83% for ES and 79% for MS.

Source: Audited Register for NYCPS and charter schools; NYCPS administrative data for non-public schools

## DISTRICT ES AND MS ENROLLMENT MODEL ("IN-OUT MODEL")

The table below depicts the prevailing trends for students coming into the district ("IN") and leaving the district ("OUT") to help identify the primary drivers of district school enrollment change.

**Table 8: In-Out Model - ES and MS**

	ES			MS		
	2019-20	2024-25	% Chg	2019-20	2024-25	% Chg
<b>Residents of District 11</b>	<b>25,141</b>	<b>22,515</b>	<b>-10%</b>	<b>12,794</b>	<b>11,612</b>	<b>-9%</b>
- OUT to other districts	-1,270	-1,333	5%	-962	-900	-6%
- OUT to D75/D79	-701	-851	21%	-305	-331	9%
- OUT to charters	-4,185	-5,248	25%	-1,530	-2,480	62%
- OUT to Non-Public Schools	-2,157	-1,521	-29%	-1,295	-1,002	-23%
<b>Total OUT</b>	<b>-8,313</b>	<b>-8,953</b>	<b>8%</b>	<b>-4,092</b>	<b>-4,713</b>	<b>15%</b>
<b>+ IN from other districts</b>	<b>+745</b>	<b>+673</b>	<b>-10%</b>	<b>+578</b>	<b>+730</b>	<b>26%</b>
<b>D11 Enrollment</b>	<b>17,573</b>	<b>14,235</b>	<b>-19%</b>	<b>9,280</b>	<b>7,629</b>	<b>-18%</b>

*Source: Audited Register for NYCPS and charter schools; NYCPS administrative data for non-public schools*

### Students Leaving the District:

- At the elementary school level, the largest number of students leaving District 11 enroll in charter schools. Since 2019-20, this number has grown by 25%, as compared to the overall number of elementary school-aged residents, which has decreased by 10%.
- At the middle school level, the largest number of students leaving District 11 enroll in charter schools. Since 2019-20, this number has grown by 62%, as compared to the overall number of middle school-aged residents, which has decreased by 9%.

### Students Coming into the District:

- At the elementary school level, a smaller number of students living in other districts come into District 11 schools (673) than District 11 residents who leave for other district schools (1,333).
- At the middle school level, a smaller number of students living in other districts come into District 11 schools (730) than District 11 residents who leave for other district schools (900).

## ARTICULATION TRENDS

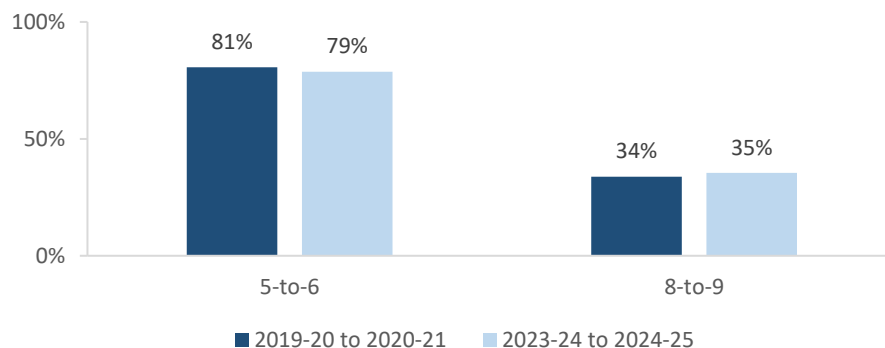
Table 9: 5-to-6 Articulation (Where District 11 5th Graders Enrolled the Following Year)

	2019-20 to 2020-21		2023-24 to 2024-25	
	#	%	#	%
District 11 Schools	2,580	81%	2,050	79%
Other District Schools	137	4%	130	5%
D75 Schools	2	0%	3	0%
D79 Schools	0	0%	0	0%
Charter Schools	247	8%	181	7%
Non-Public Schools	34	1%	48	2%
Out of NYC	159	5%	149	6%
Other	43	1%	43	2%
<b>Total</b>	<b>3,202</b>	<b>100%</b>	<b>2,604</b>	<b>100%</b>

Table 10: 8-to-9 Articulation (Where District 11 8th Graders Enrolled the Following Year)

	2019-20 to 2020-21		2023-24 to 2024-25	
	#	%	#	%
District 11 Schools	1,048	34%	968	35%
Other District Schools	1,529	49%	1,218	45%
D75 Schools	3	0%	5	0%
D79 Schools	0	0%	1	0%
Charter Schools	129	4%	143	5%
Non-Public Schools	164	5%	204	7%
Out of NYC	155	5%	169	6%
Other	66	2%	25	1%
<b>Total</b>	<b>3,094</b>	<b>100%</b>	<b>2,733</b>	<b>100%</b>

District 11 Students Remaining in District the Following Year



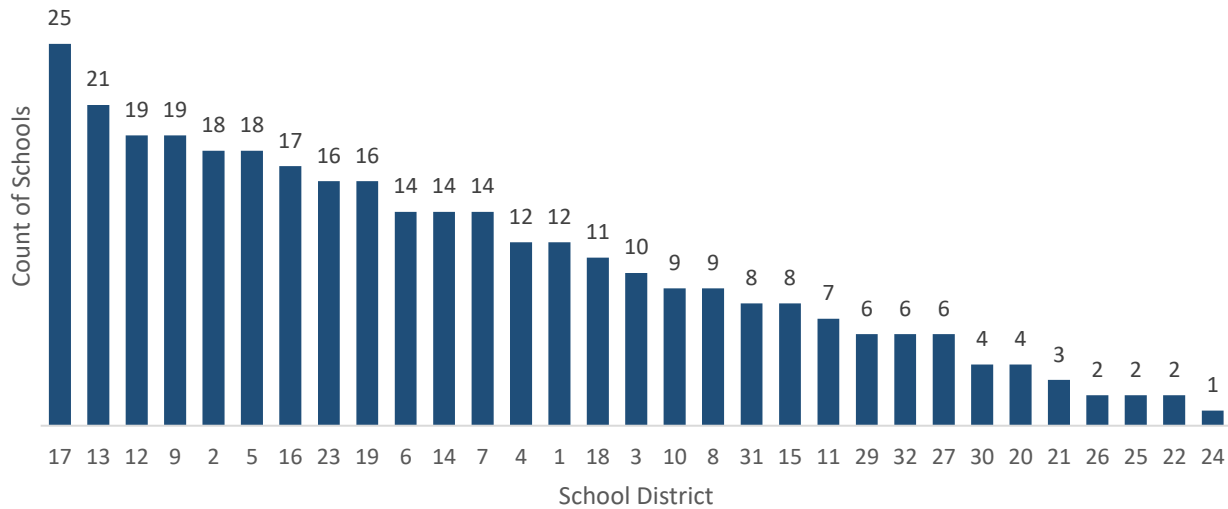
- Citywide, the average percent of graduating 5th graders who remain at a district school in the same district for 6th grade is 73%; for graduating 8th graders, the average percent of students who remain in the same district for 9th grade is 37%.

## SCHOOL COUNTS BY ENROLLMENT RANGE

Table 11: District 11 School Counts by Enrollment Range

Enrollment Range	School Level							
	ECC	ES	MS	HS	K-8	6-12	K-12	Total
Less than 150	0	0	0	0	0	0	0	0
150-249	0	2	2	0	1	0	0	5
250-349	0	10	6	5	0	0	0	21
350-449	0	2	3	8	0	0	0	13
450-549	0	2	1	1	0	0	0	4
550+	0	8	2	2	6	0	0	18
<i>Total</i>	0	24	14	16	7	0	0	61

Number of Schools with Enrollment in Bottom 25% by School District - 2024-25



Source: Audited Register; includes district schools only; excludes pre-K centers and transfer schools.



## ENROLLMENT VS. CAPACITY

Table 12: District 11 Enrollment vs. Capacity - Grades K-5

	Neighborhood(s)	Count of Schools	Enrollment	Capacity	Seat Excess / (Deficit)
<b>District 11</b>	<b>N/A</b>	<b>31</b>	<b>14,235</b>	<b>15,089</b>	<b>854</b>
<b>Sub-District 1</b>	Van Nest , Pelham Pkwy	16	8,564	8,414	(150)
<b>Sub-District 2</b>	Woodlawn, Williamsbr.	15	5,671	6,675	1,004

Table 13: District 11 Enrollment vs. Capacity - Grades 6-8

	Neighborhood(s)	Count of Schools	Enrollment	Capacity	Seat Excess / (Deficit)
<b>District 11</b>	<b>N/A</b>	<b>21</b>	<b>7,629</b>	<b>10,293</b>	<b>2,664</b>
<b>Sub-District 1</b>	Van Nest , Pelham Pkwy	12	4,440	4,735	295
<b>Sub-District 2</b>	Woodlawn, Williamsbr.	9	3,189	5,558	2,369

Source: Enrollment from 2024-25 Audited Register and grade-level capacity estimated from 2023-24 Blue Book; does not include new or planned capacity in 2024-25 and beyond.

## BUILDING UTILIZATION

Each year, the SCA publishes the Blue Book, a report analyzing the capacity and enrollment for every NYCPS building across the city. "Under-Utilized Buildings" reflects the projected count of buildings that have at least 150 excess seats.

Table 14: Count of NYCPS Buildings by Utilization Status

	District 11	Bronx
<b>Count of Buildings</b>	<b>56</b>	<b>376</b>
<b>Under-Utilized (UU) Buildings</b>	<b>17</b>	<b>123</b>
150-299 Excess Seats	7	50
300+ Excess Seats	10	73
<b>Over-Utilized Buildings</b>	<b>16</b>	<b>40</b>

Source: Enrollment and capacity from 2023-24 Blue Book; UU status is from a preliminary 2024-25 UU analysis, and accounts for building enrollment and planning changes implemented in 2024-25 and after.

## DISTRICT 75

NYCPS's District 75 provides specialized instructional support for students with significant challenges, such as Autism Spectrum Disorder (ASD), significant cognitive delays, emotional disability, sensory impairment, and multiple disabilities. District 75 serves students through a number of different program models.

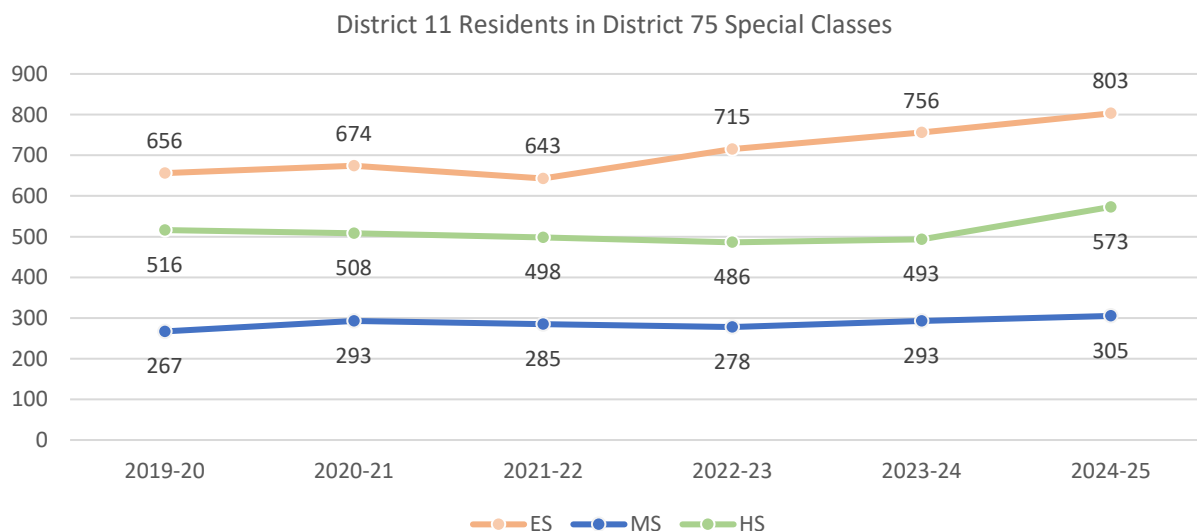
- Most District 75 students attend Special Class programs, which operate as distinct schools and may be located in standalone sites or co-located with district schools.
- A smaller number of students attend Inclusion Programs, in which students receive District 75 services within general education classes at a district school partner.

**Table 15: District 75 Seat Need**

	ES			MS			HS		
	District	Borough	City	District	Borough	City	District	Borough	City
<b>Capacity</b>	572	3,904	14,094	330	1,520	5,380	1,130	2,688	9,584
<b>Residents</b>	803	3,607	12,790	305	1,323	4,515	573	2,624	8,684
<b>Deficit</b>	-231	No Deficit	No Deficit	No Deficit	No Deficit	No Deficit	No Deficit	No Deficit	No Deficit

**Table 16: District 75 Residential Growth**

	2019-20	2020-21	2021-22	2022-23	2023-24	2024-25	5yr Change	1yr Change
<b>ES</b>	656	674	643	715	756	803	6%	22%
<b>MS</b>	267	293	285	278	293	305	4%	14%
<b>HS</b>	516	508	498	486	493	573	16%	11%
<b>All Grades</b>	1,439	1,475	1,426	1,479	1,542	1,681	9%	17%



Source: Audited Register

## DISTRICT DEMOGRAPHICS

Table 17: Ethnicity

	K-5			6-8			9-12		
	District	Borough	City	District	Borough	City	District	Borough	City
% Asian	12%	5%	17%	11%	4%	17%	5%	6%	16%
% Hispanic	41%	63%	42%	43%	65%	44%	46%	62%	44%
% Black	35%	26%	22%	36%	26%	23%	40%	27%	24%
% White	10%	4%	15%	8%	3%	13%	6%	4%	12%
% Other	2%	2%	4%	2%	2%	3%	3%	2%	3%

Table 18: Special Populations

	K-5			6-8			9-12		
	District	Borough	City	District	Borough	City	District	Borough	City
Students with Disabilities	20%	23%	21%	21%	23%	21%	23%	22%	19%
English Language Learners	15%	21%	22%	11%	16%	15%	15%	16%	15%
Economically Disadvantaged	85%	90%	76%	83%	89%	77%	84%	87%	77%
Students in Temporary Housing	9%	14%	12%	10%	15%	12%	11%	14%	11%

Source: 2024-25 Audited Register; includes charter schools located in the district and may differ slightly from the NYCPS Demographic Snapshot.

## SPECIAL PROGRAMS

Table 19: District 11 Special Program Summary

	District 11	Bronx
Schools with ASD Programs	4	32
<i>Horizon</i>	1	17
<i>Nest</i>	4	17
Schools with G&T Programs	3	17
Schools with Bilingual Ed Programs	1	91
<i>Dual Language (DL)</i>	0	28
<i>Transitional Bilingual Education (TBE)</i>	0	6
<i>DL/TBE</i>	1	57

Note: Schools with both *Horizon* and *Nest* programs are counted once in the top row but separately in the *Horizon* and *Nest* rows beneath.





## Office of District Planning, 2025-2026

N  
1 inch = 0.69 miles