

District 14

Data Summary

2026-2027 Strategic Planning Data Considerations

Contents

Citywide Enrollment	1
District Enrollment	2
Residential Population and District Retention	3
District ES and MS Enrollment Model ("In-Out Model")	5
Articulation Trends	6
School Counts by Enrollment Range	7
Enrollment vs. Capacity	8
Building Utilization	8
District 75	9
District Demographics	10
Special Programs	10

CITYWIDE ENROLLMENT (DISTRICT AND CHARTER), 2015-16 TO 2024-25

New York City Public Schools (NYCPS) is committed to thoughtful collaboration with districts and communities to collectively strengthen schools, support students and families, and respond to demographic and population changes in New York City.



Source: Audited Register and Charter Headcount; includes district and charter school enrollment only

- Enrollment in D1-32 schools decreased slightly in 2024-2025, remaining approximately stable compared to the steeper declines following the onset of the COVID-19 pandemic.
- Citywide, K-12 enrollment in District 1-32 schools and charter schools has declined by about 10% since its peak in the 2016-2017 school year.

DISTRICT ENROLLMENT

District 14 Enrollment by Grade Level and Year (District Schools Only)

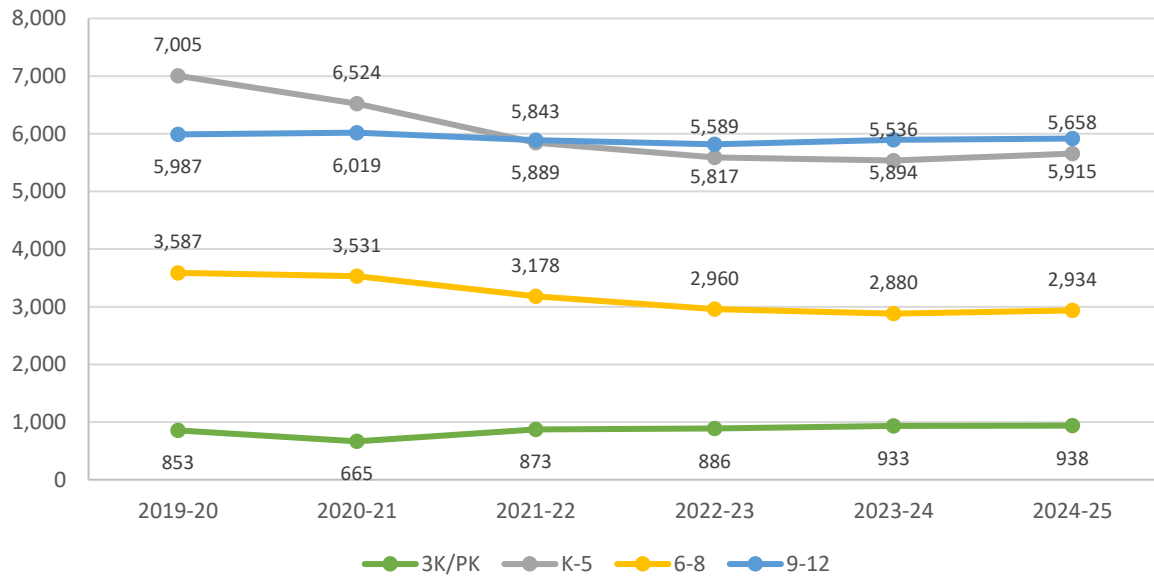


Table 1: District 14 Enrollment - 2019-20 to 2024-25

	2019-20	2020-21	2021-22	2022-23	2023-24	2024-25	1yr Change	5yr Change
3K	-	5	189	228	249	265	6%	-
PK	853	660	684	658	684	673	-2%	-21%
K-5	7,005	6,524	5,843	5,589	5,536	5,658	2%	-19%
6-8	3,587	3,531	3,178	2,960	2,880	2,934	2%	-18%
9-12	5,987	6,019	5,889	5,817	5,894	5,915	0%	-1%
Total	17,432	16,739	15,783	15,252	15,243	15,445	1%	-11%
% Change YoY		-4.0%	-5.7%	-3.4%	-0.1%	1.3%		

Table 2: District 14 Entry Grade Enrollment - 2019-20 to 2024-25

	2019-20	2020-21	2021-22	2022-23	2023-24	2024-25	1yr Change	5yr Change
K	1,171	1,086	940	938	963	991	2.9%	-15%
6	1,195	1,143	987	956	931	974	4.6%	-18%
9	1,662	1,643	1,623	1,640	1,551	1,586	2.3%	-5%

Source: Audited Register; includes enrollment in district schools only

RESIDENTIAL POPULATION AND DISTRICT RETENTION

District 14 K-12 Enrollment vs. Residential Population

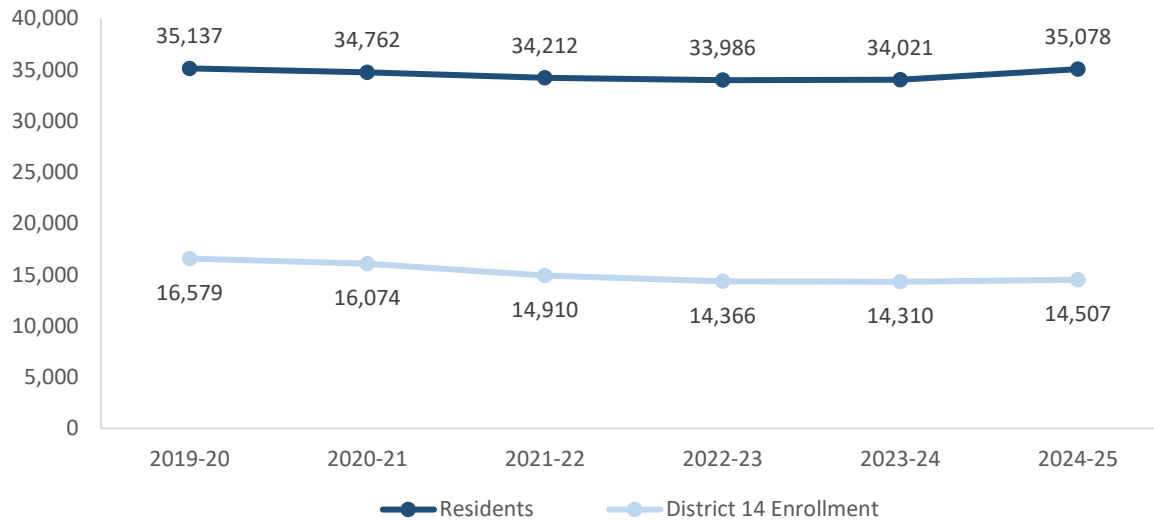


Table 3: District 14 Student Residential Population - 2019-20 to 2024-25

	2019-20	2020-21	2021-22	2022-23	2023-24	2024-25	1yr Change	5yr Change
K-5	18,752	18,512	18,012	17,703	17,587	18,162	3%	-3%
6-8	8,139	8,117	7,984	8,177	8,206	8,344	2%	3%
9-12	8,246	8,133	8,216	8,106	8,228	8,572	4%	4%
Total	35,137	34,762	34,212	33,986	34,021	35,078	3%	0%
% Change YoY		-1.1%	-1.6%	-0.7%	0.1%	3.1%		

- Between 2019-20 and 2024-25, the K-5 residential population in District 14 declined by 3%.
- During this time, the 6-8 residential population in District 14 remained approximately stable.
- Citywide, the K-12 residential population declined by 8% since 2019-20.

Source: Residential population is the sum of students attending any NYCPS school, charter or non-public school; as such, this metric will not capture students who are home schooled, have dropped out, or are otherwise not enrolled in these school options.

Table 4: Elementary School District Retention (Where District 14 Residents Enroll in School)

	2019-20	2020-21	2021-22	2022-23	2023-24	2024-25	% of Residents	
							2019-20	2024-25
District 14 Schools	5,349	4,961	4,521	4,393	4,360	4,438	29%	24%
Other District Schools	530	513	487	462	467	641	3%	4%
Charter Schools	1,008	1,037	977	912	910	819	5%	5%
Non-Public Schools	11,724	11,868	11,908	11,803	11,705	12,118	63%	67%
Other	141	133	119	133	145	146	1%	1%
Total	18,752	18,512	18,012	17,703	17,587	18,162	100%	100%
% Change YoY		-1.3%	-2.7%	-1.7%	-0.7%	3.3%		

Table 5: Middle School District Retention (Where District 14 Residents Enroll in School)

	2019-20	2020-21	2021-22	2022-23	2023-24	2024-25	% of Residents	
							2019-20	2024-25
District 14 Schools	2,384	2,380	2,165	2,022	1,943	1,951	29%	23%
Other District Schools	338	330	367	367	357	388	4%	5%
Charter Schools	449	470	475	485	479	482	6%	6%
Non-Public Schools	4,899	4,868	4,913	5,233	5,370	5,461	60%	65%
Other	69	69	64	70	57	62	1%	1%
Total	8,139	8,117	7,984	8,177	8,206	8,344	100%	100%
% Change YoY		-0.3%	-1.6%	2.4%	0.4%	1.7%		

Table 6: Where District 14 Students Live - Grades K-5

	K-5		% of Students	
	2019-20	2024-25	2019-20	2024-25
District 14	5,349	4,438	76%	78%
Other District	1,656	1,220	24%	22%
	7,005	5,658	100%	100%

Table 7: Where District 14 Students Live - Grades 6-8

	6-8		% of Students	
	2019-20	2024-25	2019-20	2024-25
District 14	2,384	1,951	66%	66%
Other District	1,203	983	34%	34%
	3,587	2,934	100%	100%

Citywide Trends

- Citywide, the average **District Retention Rate** (the percent of students living in a district who enroll in a district school in that district) is 54% for ES and 49% for MS.
- Citywide, the average **District Enrollment Rate** (the percent of students enrolled in district schools who live in that district) is 83% for ES and 79% for MS.

Source: Audited Register for NYCPS and charter schools; NYCPS administrative data for non-public schools

DISTRICT ES AND MS ENROLLMENT MODEL ("IN-OUT MODEL")

The table below depicts the prevailing trends for students coming into the district ("IN") and leaving the district ("OUT") to help identify the primary drivers of district school enrollment change.

Table 8: In-Out Model - ES and MS

	ES			MS		
	2019-20	2024-25	% Chg	2019-20	2024-25	% Chg
Residents of District 14	18,752	18,162	-3%	8,139	8,344	3%
- OUT to other districts	-530	-641	21%	-338	-388	15%
- OUT to D75/D79	-141	-146	4%	-69	-62	-10%
- OUT to charters	-1,008	-819	-19%	-449	-482	7%
- OUT to Non-Public Schools	-11,724	-12,118	3%	-4,899	-5,461	11%
Total OUT	-13,403	-13,724	2%	-5,755	-6,393	11%
+ IN from other districts	+1,656	+1,220	-26%	+1,203	+983	-18%
D14 Enrollment	7,005	5,658	-19%	3,587	2,934	-18%

Source: Audited Register for NYCPS and charter schools; NYCPS administrative data for non-public schools

Students Leaving the District:

- At the elementary school level, the largest number of students leaving District 14 enroll in non-public schools. Since 2019-20, this number has grown by 3%, as compared to the overall number of elementary school-aged residents, which has decreased by 3%.
- At the middle school level, the largest number of students leaving District 14 enroll in non-public schools. Since 2019-20, this number has grown by 11%, as compared to the overall number of middle school-aged residents, which has remained about the same.

Students Coming into the District:

- At the elementary school level, a greater number of students living in other districts come into District 14 schools (1,220) than District 14 residents who leave for other district schools (641).
- At the middle school level, a greater number of students living in other districts come into District 14 schools (983) than District 14 residents who leave for other district schools (388).

ARTICULATION TRENDS

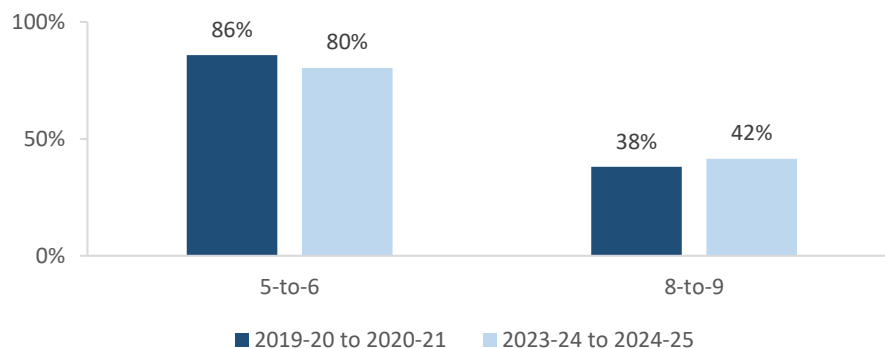
Table 9: 5-to-6 Articulation (Where District 14 5th Graders Enrolled the Following Year)

	2019-20 to 2020-21		2023-24 to 2024-25	
	#	%	#	%
District 14 Schools	999	86%	721	80%
Other District Schools	79	7%	92	10%
D75 Schools	1	0%	0	0%
D79 Schools	0	0%	0	0%
Charter Schools	19	2%	25	3%
Non-Public Schools	11	1%	29	3%
Out of NYC	39	3%	21	2%
Other	17	1%	9	1%
Total	1,165	100%	897	100%

Table 10: 8-to-9 Articulation (Where District 14 8th Graders Enrolled the Following Year)

	2019-20 to 2020-21		2023-24 to 2024-25	
	#	%	#	%
District 14 Schools	441	38%	401	42%
Other District Schools	540	47%	424	44%
D75 Schools	4	0%	5	1%
D79 Schools	1	0%	0	0%
Charter Schools	92	8%	67	7%
Non-Public Schools	33	3%	26	3%
Out of NYC	36	3%	35	4%
Other	14	1%	8	1%
Total	1,161	100%	966	100%

District 14 Students Remaining in District the Following Year



- Citywide, the average percent of graduating 5th graders who remain at a district school in the same district for 6th grade is 73%; for graduating 8th graders, the average percent of students who remain in the same district for 9th grade is 37%.

SCHOOL COUNTS BY ENROLLMENT RANGE

Table 11: District 14 School Counts by Enrollment Range

Enrollment Range	School Level							
	ECC	ES	MS	HS	K-8	6-12	K-12	Total
Less than 150	1	2	0	0	0	0	0	3
150-249	0	8	1	1	0	0	0	10
250-349	0	1	1	0	1	1	0	4
350-449	0	3	2	3	0	1	0	9
450-549	0	2	0	2	0	1	0	5
550+	0	1	1	4	1	0	0	7
<i>Total</i>	<i>1</i>	<i>17</i>	<i>5</i>	<i>10</i>	<i>2</i>	<i>3</i>	<i>0</i>	<i>38</i>

Number of Schools with Enrollment in Bottom 25% by School District - 2024-25



Source: Audited Register; includes district schools only; excludes pre-K centers and transfer schools.

ENROLLMENT VS. CAPACITY

Table 12: District 14 Enrollment vs. Capacity - Grades K-5

	Neighborhood(s)	Count of Schools	Enrollment	Capacity	Seat Excess / (Deficit)
District 14	N/A	20	5,658	8,110	2,452
Sub-District 1	Bedford-Stuyvesant	6	1,316	2,573	1,257
Sub-District 2	E. Williamsburg, Bushwick	9	2,410	3,409	999
Sub-District 3	Williamsburg, Greenpoint	5	1,932	2,128	196

Table 13: District 14 Enrollment vs. Capacity - Grades 6-8

	Neighborhood(s)	Count of Schools	Enrollment	Capacity	Seat Excess / (Deficit)
District 14	N/A	10	2,934	5,116	2,182
Sub-District 1	Bedford-Stuyvesant	3	1,303	2,158	855
Sub-District 2	E. Williamsburg, Bushwick	3	522	873	351
Sub-District 3	Williamsburg, Greenpoint	4	1,109	2,085	976

Source: Enrollment from 2024-25 Audited Register and grade-level capacity estimated from 2023-24 Blue Book; does not include new or planned capacity in 2024-25 and beyond.

BUILDING UTILIZATION

Each year, the SCA publishes the Blue Book, a report analyzing the capacity and enrollment for every NYCPS building across the city. "Under-Utilized Buildings" reflects the projected count of buildings that have at least 150 excess seats.

Table 14: Count of NYCPS Buildings by Utilization Status

	District 14	Brooklyn
Count of Buildings	38	489
Under-Utilized (UU) Buildings	19	196
150-299 Excess Seats	7	74
300+ Excess Seats	12	122
Over-Utilized Buildings	7	98

Source: Enrollment and capacity from 2023-24 Blue Book; UU status is from a preliminary 2024-25 UU analysis, and accounts for building enrollment and planning changes implemented in 2024-25 and after.

DISTRICT 75

NYCPS's District 75 provides specialized instructional support for students with significant challenges, such as Autism Spectrum Disorder (ASD), significant cognitive delays, emotional disability, sensory impairment, and multiple disabilities. District 75 serves students through a number of different program models.

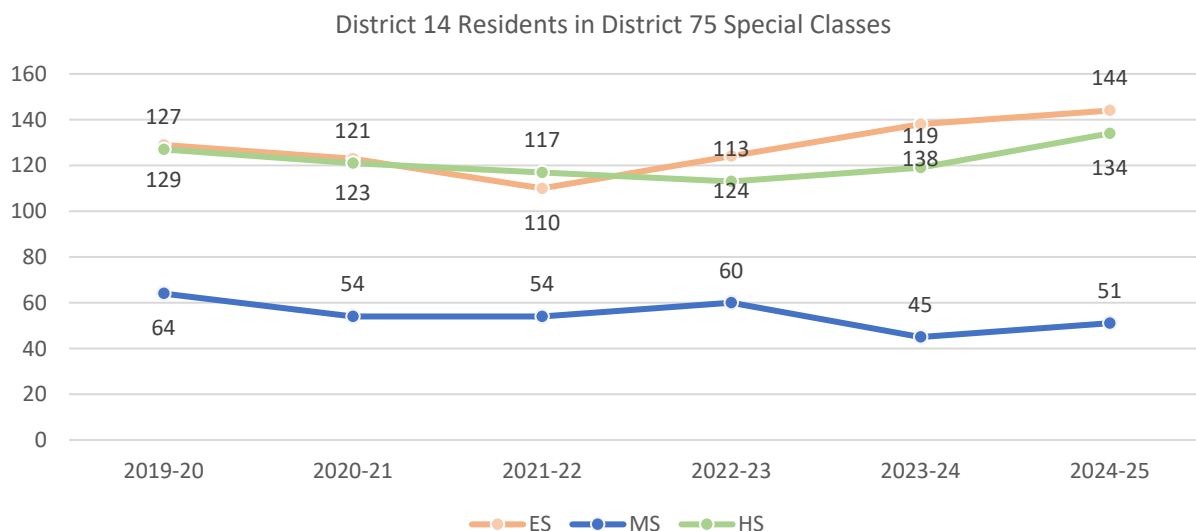
- Most District 75 students attend Special Class programs, which operate as distinct schools and may be located in standalone sites or co-located with district schools.
- A smaller number of students attend Inclusion Programs, in which students receive District 75 services within general education classes at a district school partner.

Table 15: District 75 Seat Need

	ES			MS			HS		
	District	Borough	City	District	Borough	City	District	Borough	City
Capacity	196	3,426	14,094	114	1,400	5,380	324	2,544	9,584
Residents	144	3,151	12,790	51	1,115	4,515	134	2,258	8,684
Deficit	No Deficit	No Deficit	No Deficit	No Deficit	No Deficit	No Deficit	No Deficit	No Deficit	No Deficit

Table 16: District 75 Residential Growth

	2019-20	2020-21	2021-22	2022-23	2023-24	2024-25	5yr Change	1yr Change
ES	129	123	110	124	138	144	4%	12%
MS	64	54	54	60	45	51	13%	-20%
HS	127	121	117	113	119	134	13%	6%
All Grades	320	298	281	297	302	329	9%	3%



Source: Audited Register

DISTRICT DEMOGRAPHICS

Table 17: Ethnicity

	K-5			6-8			9-12		
	District	Borough	City	District	Borough	City	District	Borough	City
% Asian	3%	17%	17%	3%	18%	17%	7%	17%	16%
% Hispanic	51%	30%	42%	56%	31%	44%	57%	32%	44%
% Black	20%	29%	22%	23%	32%	23%	27%	33%	24%
% White	21%	20%	15%	14%	17%	13%	5%	15%	12%
% Other	5%	4%	4%	3%	3%	3%	4%	3%	3%

Table 18: Special Populations

	K-5			6-8			9-12		
	District	Borough	City	District	Borough	City	District	Borough	City
Students with Disabilities	24%	20%	21%	25%	21%	21%	21%	18%	19%
English Language Learners	14%	21%	22%	11%	14%	15%	15%	14%	15%
Economically Disadvantaged	70%	76%	76%	76%	79%	77%	82%	78%	77%
Students in Temporary Housing	13%	10%	12%	13%	11%	12%	13%	10%	11%

Source: 2024-25 Audited Register; includes charter schools located in the district and may differ slightly from the NYCPS Demographic Snapshot.

SPECIAL PROGRAMS

Table 19: District 14 Special Program Summary

	District 14	Brooklyn
Schools with ASD Programs	6	46
Horizon	3	19
Nest	3	28
Schools with G&T Programs	2	43
Schools with Bilingual Ed Programs	17	115
Dual Language (DL)	9	72
Transitional Bilingual Education (TBE)	2	10
DL/TBE	6	33

Note: Schools with both Horizon and Nest programs are counted once in the top row but separately in the Horizon and Nest rows beneath.

