

District 14

Data Summary

2027-2028 Strategic Planning Data Considerations

Contents

Citywide Enrollment	1
District Enrollment	2
Residential Population and District Retention	3
District Enrollment Model ("In-Out Model")	5
Articulation Trends	6
School Counts by Enrollment Range	7
Enrollment vs. Capacity	8
Building Utilization	8
District 75	9
District Demographics	10
Special Programs	10
New York State Class Size Law	11

CITYWIDE ENROLLMENT (DISTRICT AND CHARTER), 2016-17 TO 2025-26

New York City Public Schools (NYCPS) is committed to thoughtful collaboration with districts and communities to collectively strengthen schools, support students and families, and respond to demographic and population changes in New York City.



Source: Audited Register and Charter Headcount; includes district and charter school enrollment only

- Enrollment in District 1-32 schools decreased by about 3% in 2025-2026. While enrollment has been relatively stable for the past three years, this year's decline is the largest since the steeper declines following the onset of the COVID-19 pandemic.
- Citywide, K-12 enrollment in District 1-32 schools and charter schools has declined by about 14% since its peak in the 2016-2017 school year.

DISTRICT ENROLLMENT

District 14 Enrollment by Grade Level and Year (District Schools Only)

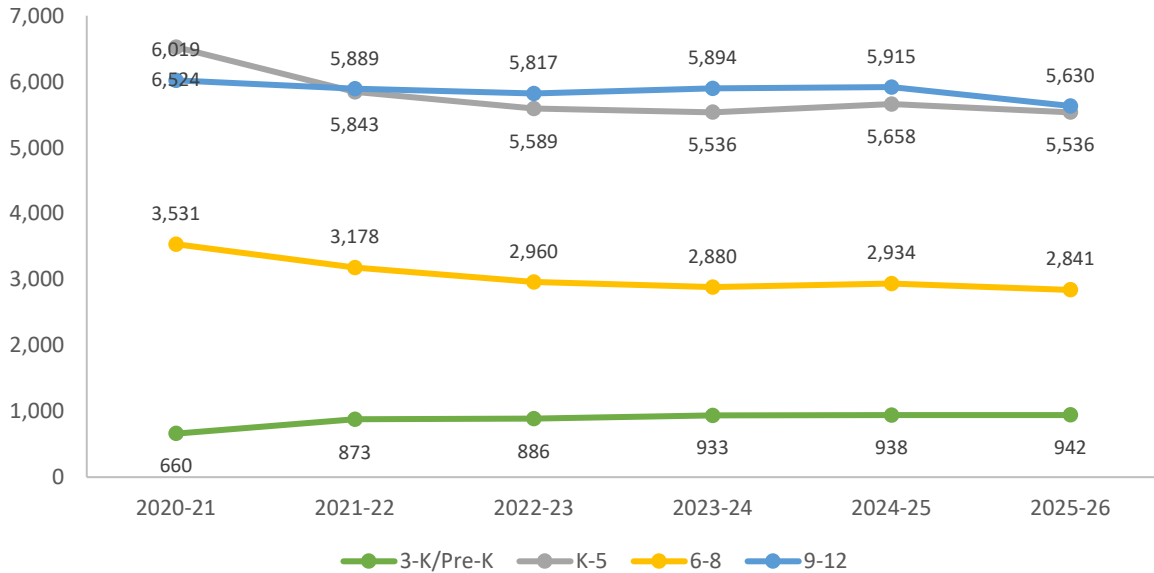


Table 1: District 14 Enrollment - 2020-21 to 2025-26

	2020-21	2021-22	2022-23	2023-24	2024-25	2025-26	1yr Change	5yr Change
3K	N/A	189	228	249	265	261	-2%	N/A
PK	660	684	658	684	673	681	1%	3%
K-5	6,524	5,843	5,589	5,536	5,658	5,536	-2%	-15%
6-8	3,531	3,178	2,960	2,880	2,934	2,841	-3%	-20%
9-12	6,019	5,889	5,817	5,894	5,915	5,630	-5%	-6%
Total	16,734	15,783	15,252	15,243	15,445	14,949	-3%	-11%
% Change YoY		-5.7%	-3.4%	-0.1%	1.3%	-3.2%		

Table 2: District 14 Entry Grade Enrollment - 2020-21 to 2025-26

	2020-21	2021-22	2022-23	2023-24	2024-25	2025-26	1yr Change	5yr Change
K	1,086	940	938	963	991	963	-2.8%	-11%
6	1,143	987	956	931	974	957	-1.7%	-16%
9	1,643	1,623	1,640	1,551	1,586	1,458	-8.1%	-11%

Source: Audited Register, preliminary for 3-K and pre-K for 2025-26; includes enrollment in district schools only

RESIDENTIAL POPULATION AND DISTRICT RETENTION

District 14 K-12 Enrollment vs. Residential Population

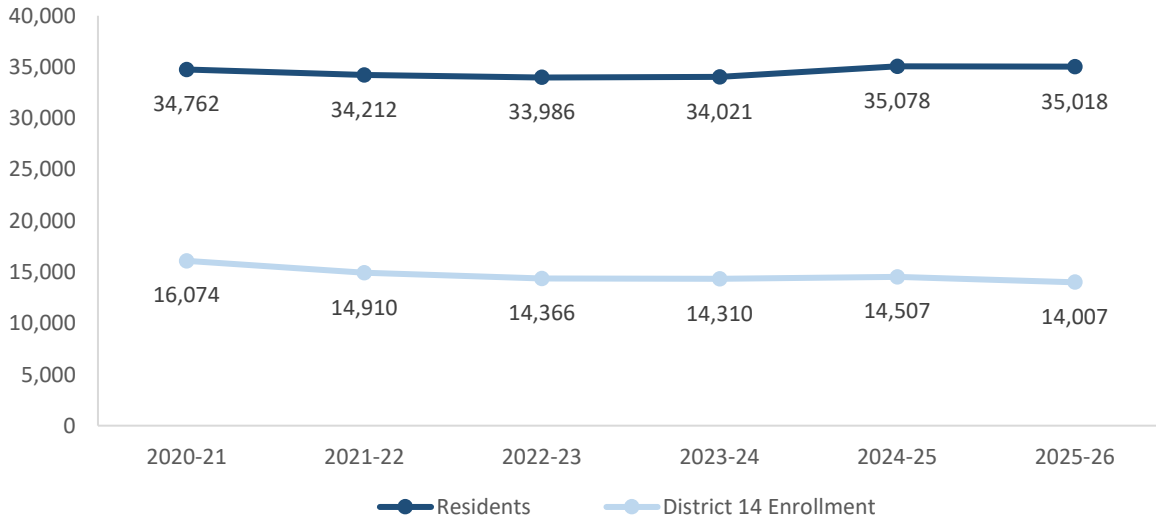


Table 3: District 14 Student Residential Population - 2020-21 to 2025-26

	2020-21	2021-22	2022-23	2023-24	2024-25	2025-26	1yr Change	5yr Change
K-5	18,512	18,012	17,703	17,587	18,162	18,288	1%	-1%
6-8	8,117	7,984	8,177	8,206	8,344	8,292	-1%	2%
9-12	8,133	8,216	8,106	8,228	8,572	8,438	-2%	4%
Total	34,762	34,212	33,986	34,021	35,078	35,018	0%	1%
% Change YoY		-1.6%	-0.7%	0.1%	3.1%	-0.2%		

- Between 2020-21 and 2025-26, the K-5 residential population in District 14 remained approximately stable.
- During this time, the 6-8 residential population in District 14 remained approximately stable.
- Citywide, the K-12 residential population declined by 7% since 2020-21.

Source: Residential population is the sum of students attending any NYCPS school, charter or non-public school; as such, this metric will not capture students who are home schooled, have dropped out, or are otherwise not enrolled in these school options.

Table 4: Elementary School District Retention (Where District 14 Residents Enroll in School)

	2020-21	2021-22	2022-23	2023-24	2024-25	2025-26	% of Residents	
							2020-21	2025-26
District 14 Schools	4,961	4,521	4,393	4,360	4,438	4,319	27%	24%
Other District Schools	513	487	462	467	641	580	3%	3%
Charter Schools	1,037	977	912	910	819	825	6%	5%
Non-Public Schools	11,868	11,908	11,803	11,705	12,118	12,420	64%	68%
Other	133	119	133	145	146	144	1%	1%
Total	18,512	18,012	17,703	17,587	18,162	18,288	100%	100%
% Change YoY		-2.7%	-1.7%	-0.7%	3.3%	0.7%		

Table 5: Middle School District Retention (Where District 14 Residents Enroll in School)

	2020-21	2021-22	2022-23	2023-24	2024-25	2025-26	% of Residents	
							2020-21	2025-26
District 14 Schools	2,380	2,165	2,022	1,943	1,951	1,851	29%	22%
Other District Schools	330	367	367	357	388	358	4%	4%
Charter Schools	470	475	485	479	482	476	6%	6%
Non-Public Schools	4,868	4,913	5,233	5,370	5,461	5,536	60%	67%
Other	69	64	70	57	62	71	1%	1%
Total	8,117	7,984	8,177	8,206	8,344	8,292	100%	100%
% Change YoY		-1.6%	2.4%	0.4%	1.7%	-0.6%		

Table 6: Where District 14 Students Live - Grades K-5

	K-5		% of Students	
	2020-21	2025-26	2020-21	2025-26
District 14	4,961	4,319	76%	78%
Other District	1,563	1,217	24%	22%
	6,524	5,536	100%	100%

Table 7: Where District 14 Students Live - Grades 6-8

	6-8		% of Students	
	2020-21	2025-26	2020-21	2025-26
District 14	2,380	1,851	67%	65%
Other District	1,151	990	33%	35%
	3,531	2,841	100%	100%

Citywide Trends

- Citywide, the average **District Retention Rate** (the percent of students living in a district who enroll in a district school in that district) is 53% for ES and 48% for MS.
- Citywide, the average **District Enrollment Rate** (the percent of students enrolled in district schools who live in that district) is 83% for ES and 76% for MS.

Source: Audited Register for NYCPS and charter schools; NYCPS administrative data for non-public schools

DISTRICT ENROLLMENT MODEL ("IN-OUT MODEL")

The table below depicts the prevailing trends for students coming into the district ("IN") and leaving the district ("OUT") to help identify the primary drivers of district school enrollment change.

Table 8: In-Out Model - ES and MS

	ES			MS		
	2020-21	2025-26	% Change	2020-21	2025-26	% Change
Residents of District 14	18,512	18,288	-1%	8,117	8,292	2%
- OUT to other districts	-513	-580	13%	-330	-358	8%
- OUT to D75/D79	-133	-144	8%	-69	-71	3%
- OUT to charters	-1,037	-825	-20%	-470	-476	1%
- OUT to Non-Public Schools	-11,868	-12,420	5%	-4,868	-5,536	14%
Total OUT	-13,551	-13,969	3%	-5,737	-6,441	12%
+ IN from other districts	+1,563	+1,217	-22%	+1,151	+990	-14%
D14 Enrollment	6,524	5,536	-15%	3,531	2,841	-20%

Source: Audited Register for NYCPS and charter schools; NYCPS administrative data for non-public schools

Students Leaving the District:

- At the elementary school level, the largest number of students leaving District 14 enroll in non-public schools. Since 2020-21, this number has grown by 5%, as compared to the overall number of elementary school-aged residents, which has remained about the same.
- At the middle school level, the largest number of students leaving District 14 enroll in non-public schools. Since 2020-21, this number has grown by 14%, as compared to the overall number of middle school-aged residents, which has remained about the same.

Students Coming into the District:

- At the elementary school level, a greater number of students living in other districts come into District 14 schools (1,217) than District 14 residents who leave for other district schools (580).
- At the middle school level, a greater number of students living in other districts come into District 14 schools (990) than District 14 residents who leave for other district schools (358).

ARTICULATION TRENDS

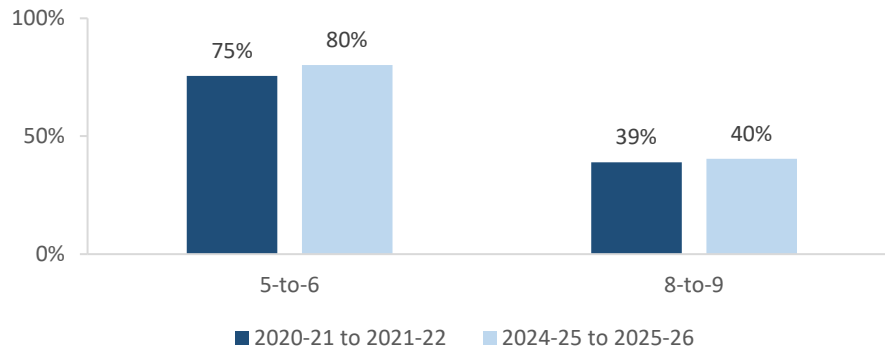
Table 9: 5-to-6 Articulation (Where District 14 5th Graders Enrolled the Following Year)

	2020-21 to 2021-22		2024-25 to 2025-26	
	#	%	#	%
District 14 Schools	834	75%	741	80%
Other District Schools	124	11%	97	10%
D75 Schools	0	0%	1	0%
D79 Schools	0	0%	0	0%
Charter Schools	34	3%	30	3%
Non-Public Schools	31	3%	20	2%
Out of NYC	57	5%	23	2%
Other	25	2%	14	2%
Total	1,105	100%	926	100%

Table 10: 8-to-9 Articulation (Where District 14 8th Graders Enrolled the Following Year)

	2020-21 to 2021-22		2024-25 to 2025-26	
	#	%	#	%
District 14 Schools	468	39%	413	40%
Other District Schools	526	44%	468	46%
D75 Schools	1	0%	5	0%
D79 Schools	2	0%	2	0%
Charter Schools	113	9%	62	6%
Non-Public Schools	36	3%	27	3%
Out of NYC	51	4%	37	4%
Other	10	1%	10	1%
Total	1,207	100%	1,024	100%

District 14 Students Remaining in District the Following Year



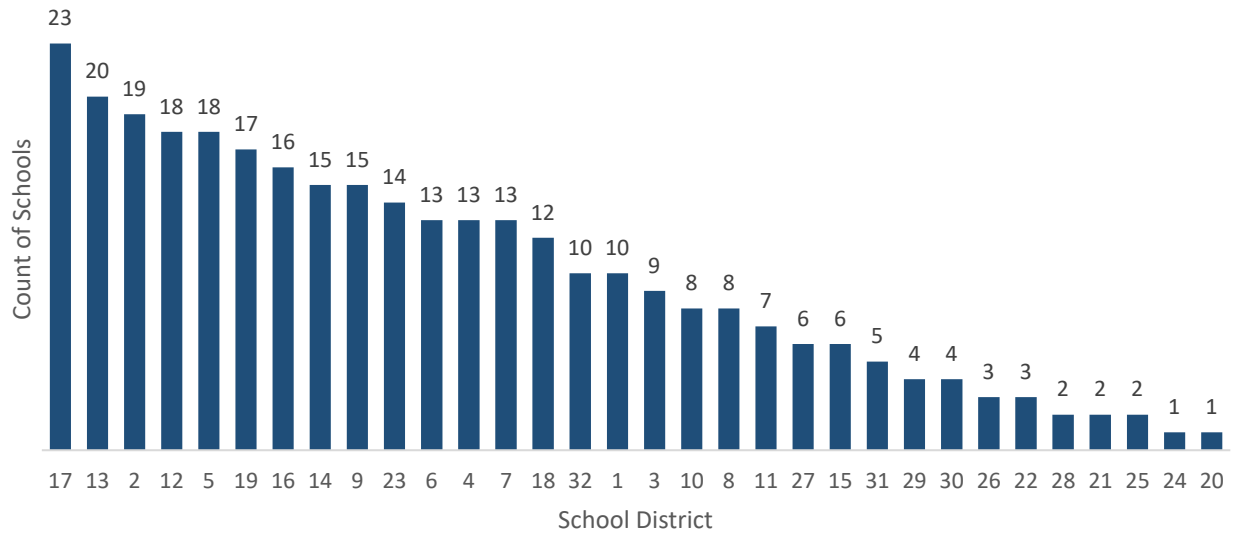
- Citywide, the average percent of graduating 5th graders who remain at a district school in the same district for 6th grade is 73%; for graduating 8th graders, the average percent of students who remain in the same district for 9th grade is 38%.

SCHOOL COUNTS BY ENROLLMENT RANGE

Table 11: District 14 School Counts by Enrollment Range (Grades K-12, Excludes 3-K and Pre-K)

Enrollment Range	School Level							Total
	ECC	ES	MS	HS	K-8	6-12	K-12	
Less than 150	1	3	1	1	0	0	0	6
150-249	0	7	0	0	1	1	0	9
250-349	0	1	2	0	0	1	0	4
350-449	0	3	1	4	0	1	0	9
450-549	0	2	0	1	0	0	0	3
550+	0	1	1	4	1	0	0	7
<i>Total</i>	<i>1</i>	<i>17</i>	<i>5</i>	<i>10</i>	<i>2</i>	<i>3</i>	<i>0</i>	<i>38</i>

Number of Schools with Enrollment in Bottom 25% by School District - 2025-26



Source: Audited Register; includes district schools only; excludes pre-K centers, transfer schools, and schools phasing in.

ENROLLMENT VS. CAPACITY

Table 12: District 14 Enrollment vs. Capacity - Grades K-5

	Neighborhood	Enrollment	Capacity	Seat Excess / Deficit
District 14	N/A	5,536	7,862	2,326
Sub-District 1	Bedford-Stuyvesant	1,162	2,215	1,053
Sub-District 2	E. Williamsburg, Bushwick	2,329	3,494	1,165
Sub-District 3	Williamsburg, Greenpoint	2,045	2,153	108

Table 13: District 14 Enrollment vs. Capacity - Grades 6-8

	Neighborhood	Enrollment	Capacity	Seat Excess / Deficit
District 14	N/A	2,841	5,080	2,239
Sub-District 1	Bedford-Stuyvesant	1,278	2,157	879
Sub-District 2	E. Williamsburg, Bushwick	511	890	379
Sub-District 3	Williamsburg, Greenpoint	1,052	2,033	981

Source: Enrollment from 2025-26 Audited Register and grade-level capacity estimated for 2025-26.

BUILDING UTILIZATION

Each year, the SCA publishes the Blue Book, a report analyzing the capacity and enrollment for every NYCPS building across the city. "Under-Utilized Buildings" reflects the projected count of buildings that have at least 150 excess seats.

Table 14: Count of NYCPS Buildings by Utilization Status

	District 14	Brooklyn
Count of Buildings	31	427
Under-Utilized (UU) Buildings	20	206
150-299 Excess Seats	8	77
300+ Excess Seats	12	129
Over-Utilized Buildings	6	88

Source: 2025-26 enrollment and 2024-25 capacity; UU status is based on a preliminary 2025-26 Under-Utilized space analysis, and accounts for building enrollment in 2025-26 and changes planned for 2026-27.

DISTRICT 75

NYCPS’s District 75 provides specialized instructional support for students with significant challenges, such as Autism Spectrum Disorder (ASD), significant cognitive delays, emotional disability, sensory impairment, and multiple disabilities. District 75 serves students through a number of different program models.

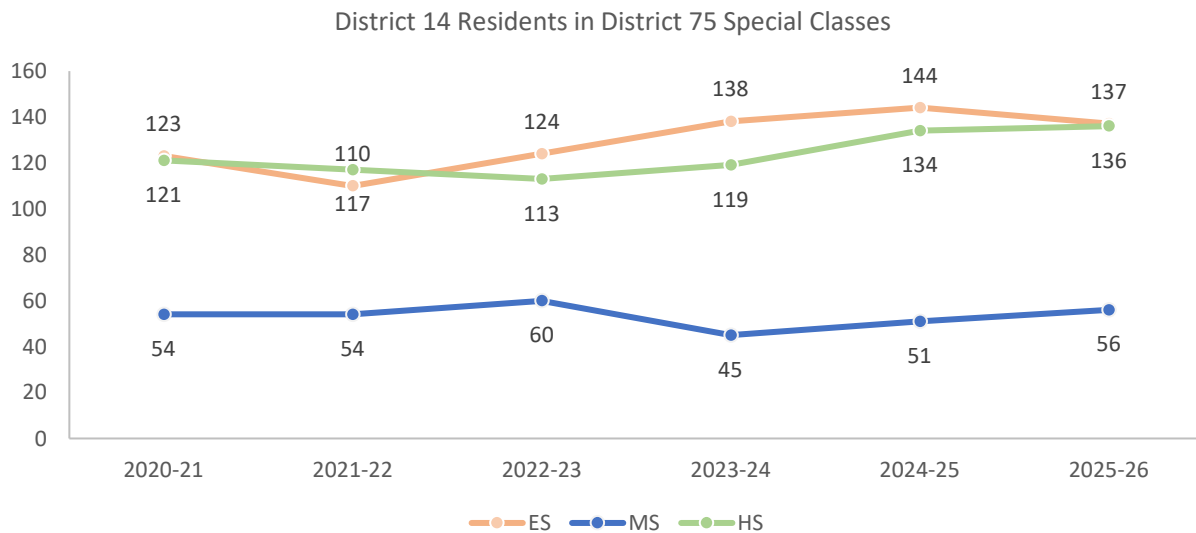
- Most District 75 students attend Special Class programs, which operate as distinct schools and may be located in standalone sites or co-located with district schools.
- A smaller number of students attend Inclusion Programs, in which students receive District 75 services within general education classes at a district school partner.

Table 15: District 75 Seat Need

	ES			MS			HS		
	District	Borough	City	District	Borough	City	District	Borough	City
Capacity	196	3,792	15,098	114	1,340	5,370	290	2,572	9,948
Residents	137	3,542	13,934	56	1,127	4,678	136	2,300	8,874
Deficit	No Deficit	No Deficit	No Deficit	No Deficit	No Deficit	No Deficit	No Deficit	No Deficit	No Deficit

Table 16: District 75 Residential Change in District 14

	2020-21	2021-22	2022-23	2023-24	2024-25	2025-26	1yr Change	5yr Change
ES	123	110	124	138	144	137	-5%	11%
MS	54	54	60	45	51	56	10%	4%
HS	121	117	113	119	134	136	1%	12%
All Grades	298	281	297	302	329	329	0%	10%



Source: Audited Register

DISTRICT DEMOGRAPHICS

Table 17: Ethnicity

	K-5			6-8			9-12		
	District	Borough	City	District	Borough	City	District	Borough	City
% Asian and Pacific Islander	4%	17%	17%	3%	18%	17%	7%	17%	17%
% Hispanic	50%	29%	42%	56%	31%	43%	58%	32%	44%
% Black	20%	29%	22%	23%	31%	23%	27%	33%	24%
% White	22%	20%	15%	15%	17%	13%	5%	15%	12%
% Multi-Racial	4%	3%	2%	3%	2%	2%	1%	1%	1%
% Native American	1%	1%	1%	1%	1%	1%	1%	1%	1%
% Other	0%	0%	0%	0%	0%	0%	2%	1%	1%

Table 18: Special Populations

	K-5			6-8			9-12		
	District	Borough	City	District	Borough	City	District	Borough	City
Students with Disabilities	27%	22%	23%	27%	21%	22%	22%	19%	19%
English Language Learners	11%	19%	20%	9%	13%	13%	13%	13%	13%
Economically Disadvantaged	65%	73%	73%	75%	76%	74%	80%	76%	75%
Students in Temporary Housing	12%	10%	11%	12%	11%	12%	13%	10%	11%

Source: 2025-26 Audited Register; includes charter schools located in the district and may differ slightly from the NYCPS Demographic Snapshot.

SPECIAL PROGRAMS

Table 19: District 14 Special Program Summary

	District 14	Brooklyn
Schools with ASD Programs	6	49
<i>Horizon</i>	3	22
<i>Nest</i>	3	28
Schools with G&T Programs	2	43
Schools with Bilingual Ed Programs	18	117
<i>Dual Language (DL)</i>	9	75
<i>Transitional Bilingual Education (TBE)</i>	0	0
<i>DL/TBE</i>	9	42

Note: Schools with both Horizon and Nest programs are counted once in the top row but separately in the Horizon and Nest rows beneath.

NEW YORK STATE CLASS SIZE LAW

Class Size Compliance by District (2025-26)



Source: November 15, 2025 Annual Report on Implementation of New York State’s Class Size Caps, available at <https://infohub.nyced.org/docs/default-source/default-document-library/summary-report-11-15-25-final.pdf>

