

# District 15

# Data Summary

2026-2027 Strategic Planning Data Considerations

## Contents

Citywide Enrollment	1
District Enrollment	2
Residential Population and District Retention	3
District ES and MS Enrollment Model ("In-Out Model")	5
Articulation Trends	6
School Counts by Enrollment Range	7
Enrollment vs. Capacity	8
Building Utilization	8
District 75	9
District Demographics	10
Special Programs	10

## CITYWIDE ENROLLMENT (DISTRICT AND CHARTER), 2015-16 TO 2024-25

New York City Public Schools (NYCPS) is committed to thoughtful collaboration with districts and communities to collectively strengthen schools, support students and families, and respond to demographic and population changes in New York City.



Source: Audited Register and Charter Headcount; includes district and charter school enrollment only

- Enrollment in D1-32 schools decreased slightly in 2024-2025, remaining approximately stable compared to the steeper declines following the onset of the COVID-19 pandemic.
- Citywide, K-12 enrollment in District 1-32 schools and charter schools has declined by about 10% since its peak in the 2016-2017 school year.

## DISTRICT ENROLLMENT

District 15 Enrollment by Grade Level and Year (District Schools Only)

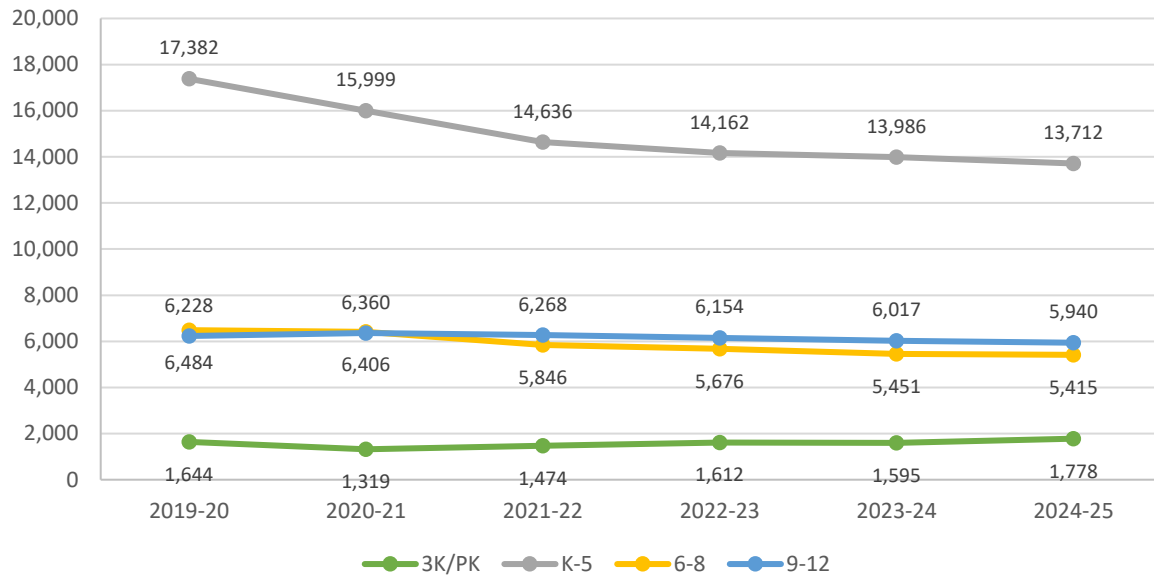


Table 1: District 15 Enrollment - 2019-20 to 2024-25

	2019-20	2020-21	2021-22	2022-23	2023-24	2024-25	1yr Change	5yr Change
<b>3K</b>	-	14	276	318	379	558	47%	-
<b>PK</b>	1,644	1,305	1,198	1,294	1,216	1,220	0%	-26%
<b>K-5</b>	17,382	15,999	14,636	14,162	13,986	13,712	-2%	-21%
<b>6-8</b>	6,484	6,406	5,846	5,676	5,451	5,415	-1%	-16%
<b>9-12</b>	6,228	6,360	6,268	6,154	6,017	5,940	-1%	-5%
<b>Total</b>	<b>31,738</b>	<b>30,084</b>	<b>28,224</b>	<b>27,604</b>	<b>27,049</b>	<b>26,845</b>	<b>-1%</b>	<b>-15%</b>
<b>% Change YoY</b>		-5.2%	-6.2%	-2.2%	-2.0%	-0.8%		

Table 2: District 15 Entry Grade Enrollment - 2019-20 to 2024-25

	2019-20	2020-21	2021-22	2022-23	2023-24	2024-25	1yr Change	5yr Change
<b>K</b>	2,921	2,594	2,421	2,356	2,386	2,339	-2.0%	-20%
<b>6</b>	2,193	2,104	1,946	1,916	1,751	1,855	5.9%	-15%
<b>9</b>	1,670	1,519	1,571	1,559	1,408	1,369	-2.8%	-18%

Source: Audited Register; includes enrollment in district schools only

## RESIDENTIAL POPULATION AND DISTRICT RETENTION

District 15 K-12 Enrollment vs. Residential Population

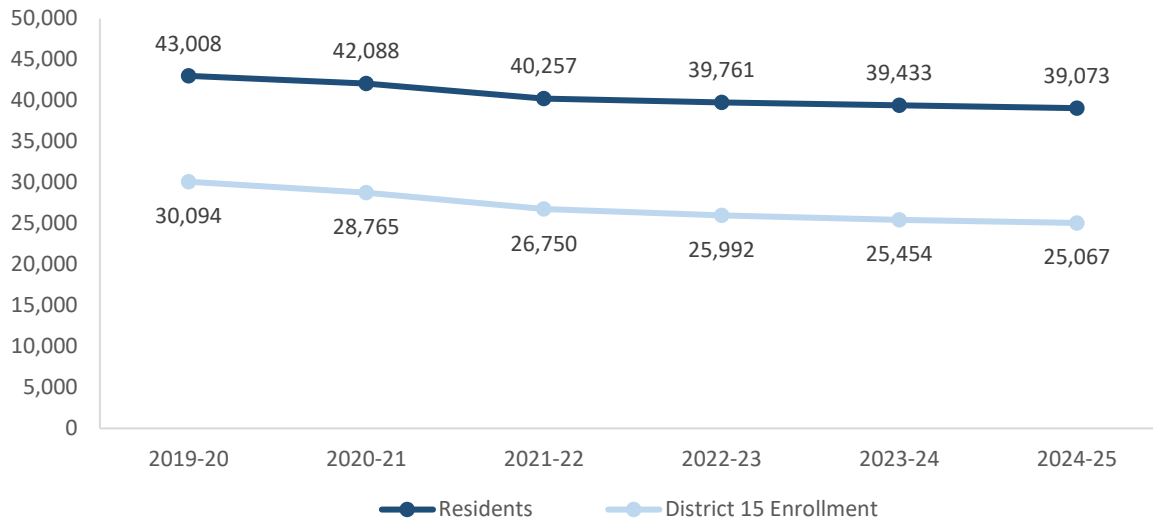


Table 3: District 15 Student Residential Population - 2019-20 to 2024-25

	2019-20	2020-21	2021-22	2022-23	2023-24	2024-25	1yr Change	5yr Change
K-5	21,747	20,398	19,218	18,664	18,395	17,934	-3%	-18%
6-8	9,968	10,009	9,360	9,245	8,950	8,868	-1%	-11%
9-12	11,293	11,681	11,679	11,852	12,088	12,271	2%	9%
<b>Total</b>	<b>43,008</b>	<b>42,088</b>	<b>40,257</b>	<b>39,761</b>	<b>39,433</b>	<b>39,073</b>	<b>-1%</b>	<b>-9%</b>
% Change YoY		-2.1%	-4.4%	-1.2%	-0.8%	-0.9%		

- Between 2019-20 and 2024-25, the K-5 residential population in District 15 declined by 18%.
- During this time, the 6-8 residential population in District 15 declined by 11%.
- Citywide, the K-12 residential population declined by 8% since 2019-20.

Source: Residential population is the sum of students attending any NYCPS school, charter or non-public school; as such, this metric will not capture students who are home schooled, have dropped out, or are otherwise not enrolled in these school options.

Table 4: Elementary School District Retention (Where District 15 Residents Enroll in School)

	2019-20	2020-21	2021-22	2022-23	2023-24	2024-25	% of Residents	
							2019-20	2024-25
District 15 Schools	15,121	13,731	12,545	12,047	11,728	11,306	70%	63%
Other District Schools	1,259	1,182	1,055	1,021	1,062	1,129	6%	6%
Charter Schools	954	1,030	1,047	1,055	1,119	1,108	4%	6%
Non-Public Schools	4,108	4,142	4,283	4,231	4,174	4,075	19%	23%
Other	305	313	288	310	312	316	1%	2%
<b>Total</b>	<b>21,747</b>	<b>20,398</b>	<b>19,218</b>	<b>18,664</b>	<b>18,395</b>	<b>17,934</b>	<b>100%</b>	<b>100%</b>
<b>% Change YoY</b>		-6.2%	-5.8%	-2.9%	-1.4%	-2.5%		

Table 5: Middle School District Retention (Where District 15 Residents Enroll in School)

	2019-20	2020-21	2021-22	2022-23	2023-24	2024-25	% of Residents	
							2019-20	2024-25
District 15 Schools	4,929	4,967	4,479	4,303	4,076	4,008	49%	45%
Other District Schools	1,780	1,739	1,621	1,586	1,554	1,559	18%	18%
Charter Schools	780	798	770	775	781	735	8%	8%
Non-Public Schools	2,409	2,429	2,404	2,483	2,426	2,465	24%	28%
Other	70	76	86	98	113	101	1%	1%
<b>Total</b>	<b>9,968</b>	<b>10,009</b>	<b>9,360</b>	<b>9,245</b>	<b>8,950</b>	<b>8,868</b>	<b>100%</b>	<b>100%</b>
<b>% Change YoY</b>		0.4%	-6.5%	-1.2%	-3.2%	-0.9%		

Table 6: Where District 15 Students Live - Grades K-5

	K-5		% of Students	
	2019-20	2024-25	2019-20	2024-25
District 15	15,121	11,306	87%	82%
Other District	2,261	2,406	13%	18%
	17,382	13,712	100%	100%

Table 7: Where District 15 Students Live - Grades 6-8

	6-8		% of Students	
	2019-20	2024-25	2019-20	2024-25
District 15	4,929	4,008	76%	74%
Other District	1,555	1,407	24%	26%
	6,484	5,415	100%	100%

## Citywide Trends

- Citywide, the average **District Retention Rate** (the percent of students living in a district who enroll in a district school in that district ) is 54% for ES and 49% for MS.

- Citywide, the average **District Enrollment Rate** (the percent of students enrolled in district schools who live in that district) is 83% for ES and 79% for MS.

Source: Audited Register for NYCPS and charter schools; NYCPS administrative data for non-public schools

## DISTRICT ES AND MS ENROLLMENT MODEL ("IN-OUT MODEL")

The table below depicts the prevailing trends for students coming into the district ("IN") and leaving the district ("OUT") to help identify the primary drivers of district school enrollment change.

**Table 8: In-Out Model - ES and MS**

	ES			MS		
	2019-20	2024-25	% Chg	2019-20	2024-25	% Chg
<b>Residents of District 15</b>	<b>21,747</b>	<b>17,934</b>	<b>-18%</b>	<b>9,968</b>	<b>8,868</b>	<b>-11%</b>
- OUT to other districts	-1,259	-1,129	-10%	-1,780	-1,559	-12%
- OUT to D75/D79	-305	-316	4%	-70	-101	44%
- OUT to charters	-954	-1,108	16%	-780	-735	-6%
- OUT to Non-Public Schools	-4,108	-4,075	-1%	-2,409	-2,465	2%
<b>Total OUT</b>	<b>-6,626</b>	<b>-6,628</b>	<b>0%</b>	<b>-5,039</b>	<b>-4,860</b>	<b>-4%</b>
<b>+ IN from other districts</b>	<b>+2,261</b>	<b>+2,406</b>	<b>6%</b>	<b>+1,555</b>	<b>+1,407</b>	<b>-10%</b>
<b>D15 Enrollment</b>	<b>17,382</b>	<b>13,712</b>	<b>-21%</b>	<b>6,484</b>	<b>5,415</b>	<b>-16%</b>

*Source: Audited Register for NYCPS and charter schools; NYCPS administrative data for non-public schools*

### Students Leaving the District:

- At the elementary school level, the largest number of students leaving District 15 enroll in non-public schools. Since 2019-20, this number has remained about the same, as compared to the overall number of elementary school-aged residents, which has decreased by 18%.
- At the middle school level, the largest number of students leaving District 15 enroll in non-public schools. Since 2019-20, this number has remained about the same, as compared to the overall number of middle school-aged residents, which has decreased by 11%.

### Students Coming into the District:

- At the elementary school level, a greater number of students living in other districts come into District 15 schools (2,406) than District 15 residents who leave for other district schools (1,129).
- At the middle school level, about the same number of students living in other districts come into District 15 schools (1,407) as District 15 residents who leave for other district schools (1,559).

## ARTICULATION TRENDS

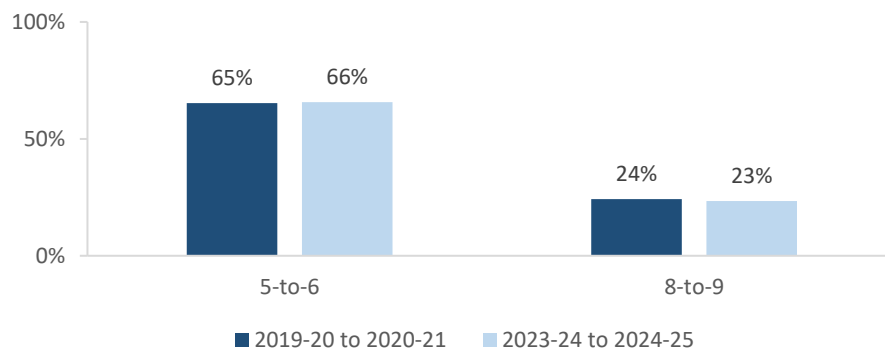
Table 9: 5-to-6 Articulation (Where District 15 5th Graders Enrolled the Following Year)

	2019-20 to 2020-21		2023-24 to 2024-25	
	#	%	#	%
District 15 Schools	1,871	65%	1,537	66%
Other District Schools	520	18%	476	20%
D75 Schools	2	0%	3	0%
D79 Schools	0	0%	0	0%
Charter Schools	180	6%	102	4%
Non-Public Schools	123	4%	135	6%
Out of NYC	117	4%	75	3%
Other	53	2%	12	1%
<b>Total</b>	<b>2,866</b>	<b>100%</b>	<b>2,340</b>	<b>100%</b>

Table 10: 8-to-9 Articulation (Where District 15 8th Graders Enrolled the Following Year)

	2019-20 to 2020-21		2023-24 to 2024-25	
	#	%	#	%
District 15 Schools	489	24%	431	23%
Other District Schools	1,362	68%	1,176	64%
D75 Schools	4	0%	3	0%
D79 Schools	0	0%	3	0%
Charter Schools	22	1%	61	3%
Non-Public Schools	69	3%	94	5%
Out of NYC	54	3%	55	3%
Other	17	1%	15	1%
<b>Total</b>	<b>2,017</b>	<b>100%</b>	<b>1,838</b>	<b>100%</b>

District 15 Students Remaining in District the Following Year



- Citywide, the average percent of graduating 5th graders who remain at a district school in the same district for 6th grade is 73%; for graduating 8th graders, the average percent of students who remain in the same district for 9th grade is 37%.

## SCHOOL COUNTS BY ENROLLMENT RANGE

Table 11: District 15 School Counts by Enrollment Range

Enrollment Range	School Level							
	ECC	ES	MS	HS	K-8	6-12	K-12	Total
Less than 150	0	2	1	1	0	0	0	4
150-249	0	4	1	3	0	0	0	8
250-349	0	3	2	3	0	0	0	8
350-449	0	5	1	0	0	0	0	6
450-549	0	4	3	1	0	1	0	9
550+	0	10	2	3	0	2	0	17
<i>Total</i>	0	28	10	11	0	3	0	52

Number of Schools with Enrollment in Bottom 25% by School District - 2024-25



Source: Audited Register; includes district schools only; excludes pre-K centers and transfer schools.



## ENROLLMENT VS. CAPACITY

Table 12: District 15 Enrollment vs. Capacity - Grades K-5

	Neighborhood(s)	Count of Schools	Enrollment	Capacity	Seat Excess / (Deficit)
<b>District 15</b>	<b>N/A</b>	<b>29</b>	<b>13,712</b>	<b>15,427</b>	<b>1,715</b>
Sub-District 1	Sunset Park	8	4,882	6,359	1,477
Sub-District 2	Park Slope	11	4,945	4,652	(293)
Sub-District 3	Carroll Gdns, Gowanus, Red Hook	10	3,885	4,416	531

Table 13: District 15 Enrollment vs. Capacity - Grades 6-8

	Neighborhood(s)	Count of Schools	Enrollment	Capacity	Seat Excess / (Deficit)
<b>District 15</b>	<b>N/A</b>	<b>13</b>	<b>5,415</b>	<b>6,228</b>	<b>813</b>
Sub-District 1	Sunset Park	4	1,232	1,377	145
Sub-District 2	Park Slope	5	2,912	3,272	360
Sub-District 3	Carroll Gdns, Gowanus, Red Hook	4	1,271	1,579	308

Source: Enrollment from 2024-25 Audited Register and grade-level capacity estimated from 2023-24 Blue Book; does not include new or planned capacity in 2024-25 and beyond.

## BUILDING UTILIZATION

Each year, the SCA publishes the Blue Book, a report analyzing the capacity and enrollment for every NYCPS building across the city. "Under-Utilized Buildings" reflects the projected count of buildings that have at least 150 excess seats.

Table 14: Count of NYCPS Buildings by Utilization Status

	District 15	Brooklyn
<b>Count of Buildings</b>	<b>64</b>	<b>489</b>
<b>Under-Utilized (UU) Buildings</b>	<b>17</b>	<b>196</b>
150-299 Excess Seats	9	74
300+ Excess Seats	8	122
<b>Over-Utilized Buildings</b>	<b>15</b>	<b>98</b>

Source: Enrollment and capacity from 2023-24 Blue Book; UU status is from a preliminary 2024-25 UU analysis, and accounts for building enrollment and planning changes implemented in 2024-25 and after.

## DISTRICT 75

NYCPS's District 75 provides specialized instructional support for students with significant challenges, such as Autism Spectrum Disorder (ASD), significant cognitive delays, emotional disability, sensory impairment, and multiple disabilities. District 75 serves students through a number of different program models.

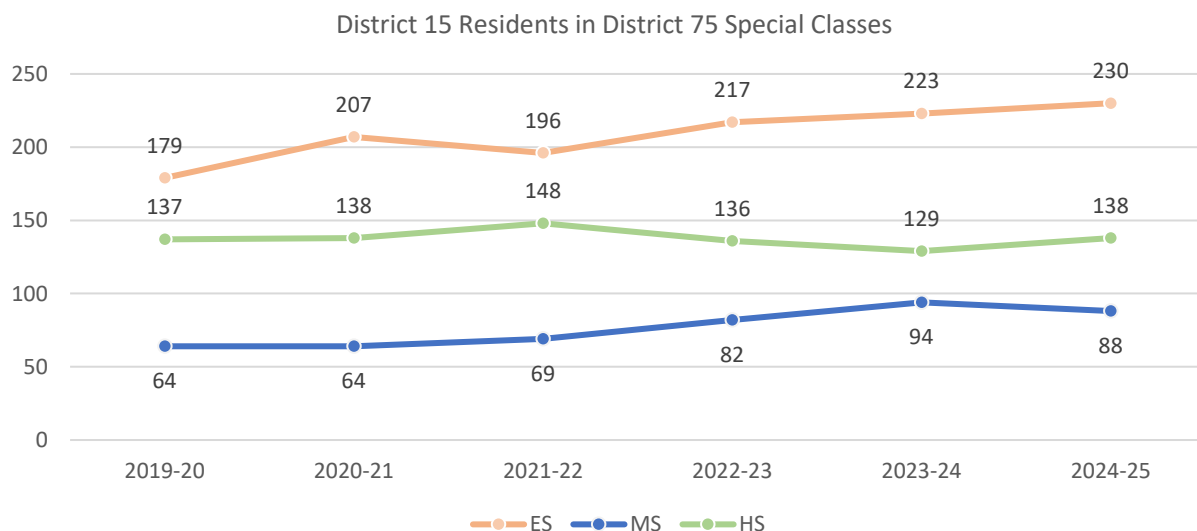
- Most District 75 students attend Special Class programs, which operate as distinct schools and may be located in standalone sites or co-located with district schools.
- A smaller number of students attend Inclusion Programs, in which students receive District 75 services within general education classes at a district school partner.

Table 15: District 75 Seat Need

	ES			MS			HS		
	District	Borough	City	District	Borough	City	District	Borough	City
<b>Capacity</b>	100	3,426	14,094	218	1,400	5,380	350	2,544	9,584
<b>Residents</b>	230	3,151	12,790	88	1,115	4,515	138	2,258	8,684
<b>Deficit</b>	-130	No Deficit	No Deficit	No Deficit	No Deficit	No Deficit	No Deficit	No Deficit	No Deficit

Table 16: District 75 Residential Growth

	2019-20	2020-21	2021-22	2022-23	2023-24	2024-25	5yr Change	1yr Change
<b>ES</b>	179	207	196	217	223	230	3%	28%
<b>MS</b>	64	64	69	82	94	88	-6%	38%
<b>HS</b>	137	138	148	136	129	138	7%	1%
<b>All Grades</b>	380	409	413	435	446	456	2%	20%



Source: Audited Register

## DISTRICT DEMOGRAPHICS

Table 17: Ethnicity

	K-5			6-8			9-12		
	District	Borough	City	District	Borough	City	District	Borough	City
% Asian	16%	17%	17%	11%	18%	17%	9%	17%	16%
% Hispanic	35%	30%	42%	42%	31%	44%	46%	32%	44%
% Black	8%	29%	22%	11%	32%	23%	27%	33%	24%
% White	34%	20%	15%	29%	17%	13%	14%	15%	12%
% Other	7%	4%	4%	6%	3%	3%	4%	3%	3%

Table 18: Special Populations

	K-5			6-8			9-12		
	District	Borough	City	District	Borough	City	District	Borough	City
Students with Disabilities	22%	20%	21%	27%	21%	21%	23%	18%	19%
English Language Learners	20%	21%	22%	10%	14%	15%	14%	14%	15%
Economically Disadvantaged	52%	76%	76%	57%	79%	77%	73%	78%	77%
Students in Temporary Housing	9%	10%	12%	7%	11%	12%	11%	10%	11%

Source: 2024-25 Audited Register; includes charter schools located in the district and may differ slightly from the NYCPS Demographic Snapshot.

## SPECIAL PROGRAMS

Table 19: District 15 Special Program Summary

	District 15	Brooklyn
Schools with ASD Programs	6	46
<i>Horizon</i>	2	19
<i>Nest</i>	5	28
Schools with G&T Programs	4	43
Schools with Bilingual Ed Programs	16	115
<i>Dual Language (DL)</i>	13	72
<i>Transitional Bilingual Education (TBE)</i>	1	10
<i>DL/TBE</i>	2	33

Note: Schools with both *Horizon* and *Nest* programs are counted once in the top row but separately in the *Horizon* and *Nest* rows beneath.



