

District 16

Data Summary

2026-2027 Strategic Planning Data Considerations

Contents

Citywide Enrollment	1
District Enrollment	2
Residential Population and District Retention	3
District ES and MS Enrollment Model ("In-Out Model")	5
Articulation Trends	6
School Counts by Enrollment Range	7
Enrollment vs. Capacity	8
Building Utilization	8
District 75	9
District Demographics	10
Special Programs	10

CITYWIDE ENROLLMENT (DISTRICT AND CHARTER), 2015-16 TO 2024-25

New York City Public Schools (NYCPS) is committed to thoughtful collaboration with districts and communities to collectively strengthen schools, support students and families, and respond to demographic and population changes in New York City.



Source: Audited Register and Charter Headcount; includes district and charter school enrollment only

- Enrollment in D1-32 schools decreased slightly in 2024-2025, remaining approximately stable compared to the steeper declines following the onset of the COVID-19 pandemic.
- Citywide, K-12 enrollment in District 1-32 schools and charter schools has declined by about 10% since its peak in the 2016-2017 school year.

DISTRICT ENROLLMENT

District 16 Enrollment by Grade Level and Year (District Schools Only)

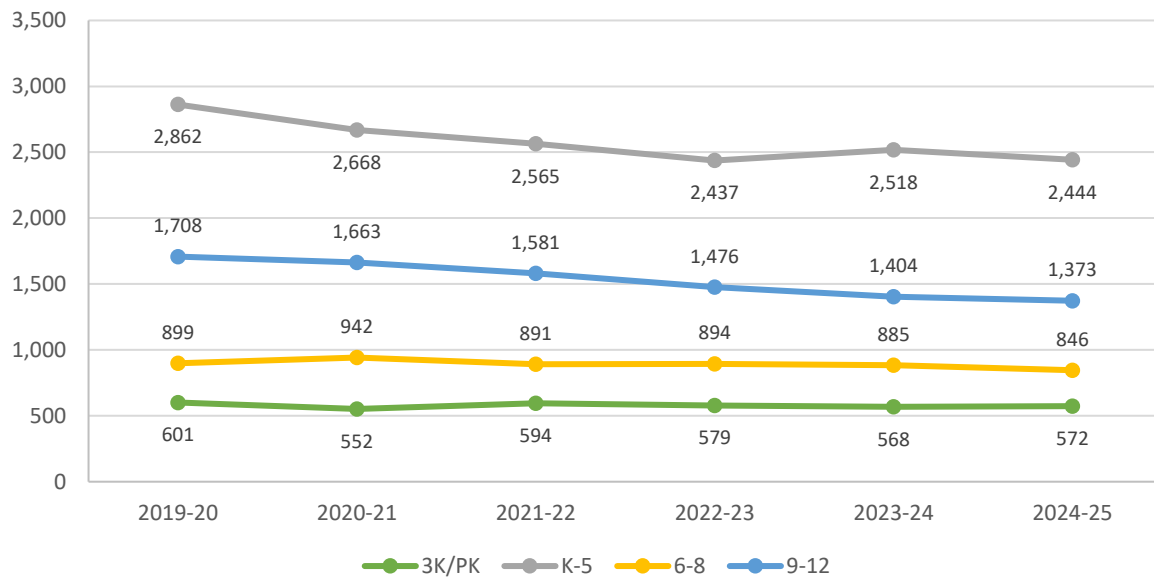


Table 1: District 16 Enrollment - 2019-20 to 2024-25

	2019-20	2020-21	2021-22	2022-23	2023-24	2024-25	1yr Change	5yr Change
3K	223	213	230	230	210	246	17%	10%
PK	378	339	364	349	358	326	-9%	-14%
K-5	2,862	2,668	2,565	2,437	2,518	2,444	-3%	-15%
6-8	899	942	891	894	885	846	-4%	-6%
9-12	1,708	1,663	1,581	1,476	1,404	1,373	-2%	-20%
Total	6,070	5,825	5,631	5,386	5,375	5,235	-3%	-14%
% Change YoY		-4.0%	-3.3%	-4.4%	-0.2%	-2.6%		

Table 2: District 16 Entry Grade Enrollment - 2019-20 to 2024-25

	2019-20	2020-21	2021-22	2022-23	2023-24	2024-25	1yr Change	5yr Change
K	456	446	437	433	435	418	-3.9%	-8%
6	276	348	284	276	262	297	13.4%	8%
9	455	388	385	302	308	322	4.5%	-29%

Source: Audited Register; includes enrollment in district schools only

RESIDENTIAL POPULATION AND DISTRICT RETENTION

District 16 K-12 Enrollment vs. Residential Population

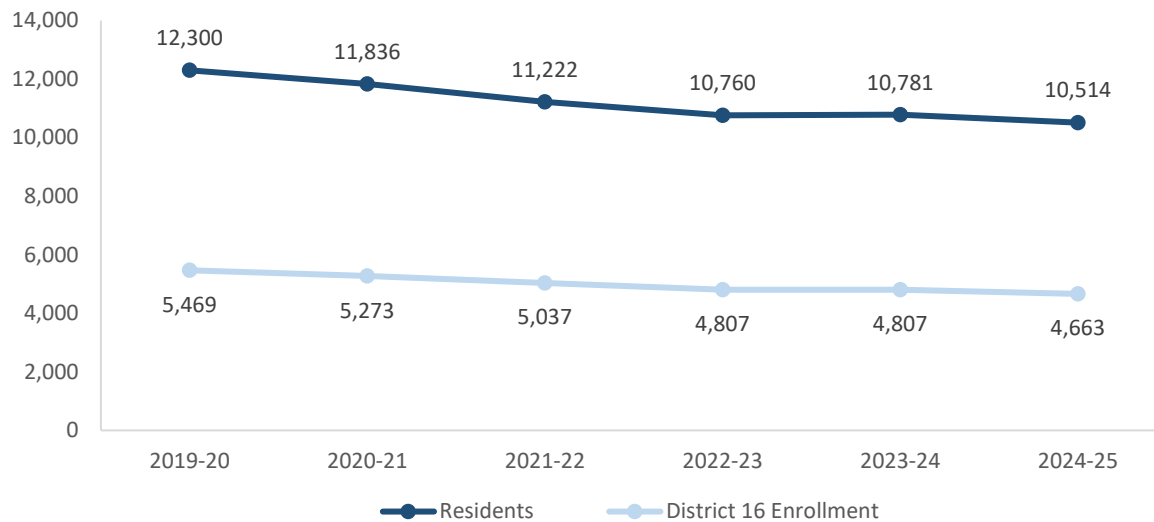


Table 3: District 16 Student Residential Population - 2019-20 to 2024-25

	2019-20	2020-21	2021-22	2022-23	2023-24	2024-25	1yr Change	5yr Change
K-5	5,467	5,047	4,688	4,458	4,516	4,458	-1%	-18%
6-8	2,839	2,878	2,690	2,528	2,465	2,340	-5%	-18%
9-12	3,994	3,911	3,844	3,774	3,800	3,716	-2%	-7%
Total	12,300	11,836	11,222	10,760	10,781	10,514	-2%	-15%
% Change YoY		-3.8%	-5.2%	-4.1%	0.2%	-2.5%		

- Between 2019-20 and 2024-25, the K-5 residential population in District 16 declined by 18%.
- During this time, the 6-8 residential population in District 16 declined by 18%.
- Citywide, the K-12 residential population declined by 8% since 2019-20.

Source: Residential population is the sum of students attending any NYCPS school, charter or non-public school; as such, this metric will not capture students who are home schooled, have dropped out, or are otherwise not enrolled in these school options.

Table 4: Elementary School District Retention (Where District 16 Residents Enroll in School)

							% of Residents	
	2019-20	2020-21	2021-22	2022-23	2023-24	2024-25	2019-20	2024-25
District 16 Schools	2,010	1,845	1,743	1,674	1,740	1,627	37%	36%
Other District Schools	1,166	1,073	1,005	970	1,002	1,072	21%	24%
Charter Schools	1,928	1,773	1,586	1,470	1,428	1,378	35%	31%
Non-Public Schools	260	241	247	246	239	257	5%	6%
Other	103	115	107	98	107	124	2%	3%
Total	5,467	5,047	4,688	4,458	4,516	4,458	100%	100%
% Change YoY		-7.7%	-7.1%	-4.9%	1.3%	-1.3%		

Table 5: Middle School District Retention (Where District 16 Residents Enroll in School)

							% of Residents	
	2019-20	2020-21	2021-22	2022-23	2023-24	2024-25	2019-20	2024-25
District 16 Schools	605	649	603	602	589	525	21%	22%
Other District Schools	942	896	809	729	715	716	33%	31%
Charter Schools	1,062	1,103	1,061	998	963	904	37%	39%
Non-Public Schools	143	152	144	133	138	139	5%	6%
Other	87	78	73	66	60	56	3%	2%
Total	2,839	2,878	2,690	2,528	2,465	2,340	100%	100%
% Change YoY		1.4%	-6.5%	-6.0%	-2.5%	-5.1%		

Table 6: Where District 16 Students Live - Grades K-5

	K-5		% of Students	
	2019-20	2024-25	2019-20	2024-25
District 16	2,010	1,627	70%	67%
Other District	852	817	30%	33%
	2,862	2,444	100%	100%

Table 7: Where District 16 Students Live - Grades 6-8

	6-8		% of Students	
	2019-20	2024-25	2019-20	2024-25
District 16	605	525	67%	62%
Other District	294	321	33%	38%
	899	846	100%	100%

Citywide Trends

- Citywide, the average **District Retention Rate** (the percent of students living in a district who enroll in a district school in that district) is 54% for ES and 49% for MS.
- Citywide, the average **District Enrollment Rate** (the percent of students enrolled in district schools who live in that district) is 83% for ES and 79% for MS.

Source: Audited Register for NYCPS and charter schools; NYCPS administrative data for non-public schools

DISTRICT ES AND MS ENROLLMENT MODEL ("IN-OUT MODEL")

The table below depicts the prevailing trends for students coming into the district ("IN") and leaving the district ("OUT") to help identify the primary drivers of district school enrollment change.

Table 8: In-Out Model - ES and MS

	ES			MS		
	2019-20	2024-25	% Chg	2019-20	2024-25	% Chg
Residents of District 16	5,467	4,458	-18%	2,839	2,340	-18%
- OUT to other districts	-1,166	-1,072	-8%	-942	-716	-24%
- OUT to D75/D79	-103	-124	20%	-87	-56	-36%
- OUT to charters	-1,928	-1,378	-29%	-1,062	-904	-15%
- OUT to Non-Public Schools	-260	-257	-1%	-143	-139	-3%
Total OUT	-3,457	-2,831	-18%	-2,234	-1,815	-19%
+ IN from other districts	+852	+817	-4%	+294	+321	9%
D16 Enrollment	2,862	2,444	-15%	899	846	-6%

Source: Audited Register for NYCPS and charter schools; NYCPS administrative data for non-public schools

Students Leaving the District:

- At the elementary school level, the largest number of students leaving District 16 enroll in charter schools. Since 2019-20, this number has decreased by 29%, as compared to the overall number of elementary school-aged residents, which has decreased by 18%.
- At the middle school level, the largest number of students leaving District 16 enroll in charter schools. Since 2019-20, this number has decreased by 15%, as compared to the overall number of middle school-aged residents, which has decreased by 18%.

Students Coming into the District:

- At the elementary school level, a smaller number of students living in other districts come into District 16 schools (817) than District 16 residents who leave for other district schools (1,072).
- At the middle school level, a smaller number of students living in other districts come into District 16 schools (321) than District 16 residents who leave for other district schools (716).

ARTICULATION TRENDS

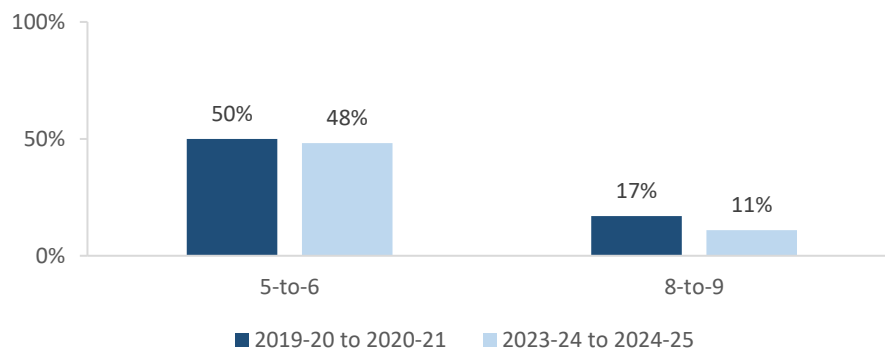
Table 9: 5-to-6 Articulation (Where District 16 5th Graders Enrolled the Following Year)

	2019-20 to 2020-21		2023-24 to 2024-25	
	#	%	#	%
District 16 Schools	277	50%	205	48%
Other District Schools	191	34%	112	26%
D75 Schools	1	0%	1	0%
D79 Schools	0	0%	0	0%
Charter Schools	63	11%	80	19%
Non-Public Schools	3	1%	6	1%
Out of NYC	13	2%	21	5%
Other	6	1%	0	0%
Total	554	100%	425	100%

Table 10: 8-to-9 Articulation (Where District 16 8th Graders Enrolled the Following Year)

	2019-20 to 2020-21		2023-24 to 2024-25	
	#	%	#	%
District 16 Schools	52	17%	36	11%
Other District Schools	226	74%	250	76%
D75 Schools	0	0%	0	0%
D79 Schools	1	0%	2	1%
Charter Schools	12	4%	19	6%
Non-Public Schools	0	0%	2	1%
Out of NYC	13	4%	16	5%
Other	2	1%	3	1%
Total	306	100%	328	100%

District 16 Students Remaining in District the Following Year



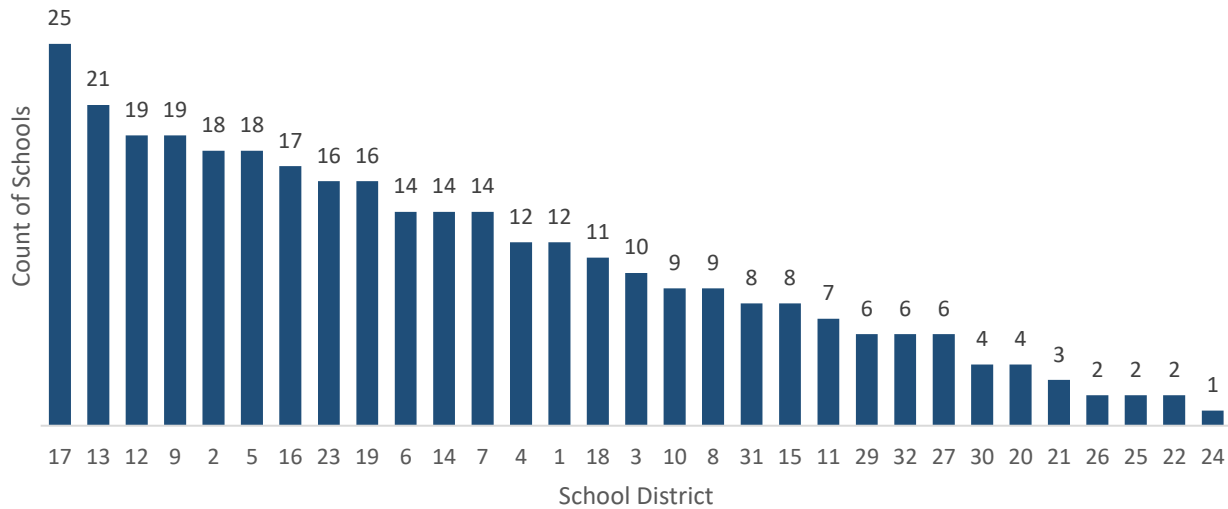
- Citywide, the average percent of graduating 5th graders who remain at a district school in the same district for 6th grade is 73%; for graduating 8th graders, the average percent of students who remain in the same district for 9th grade is 37%.

SCHOOL COUNTS BY ENROLLMENT RANGE

Table 11: District 16 School Counts by Enrollment Range

Enrollment Range	School Level							
	ECC	ES	MS	HS	K-8	6-12	K-12	Total
Less than 150	0	4	2	1	0	0	0	7
150-249	0	5	3	2	1	0	0	11
250-349	0	1	0	0	0	0	0	1
350-449	0	2	0	1	0	0	0	3
450-549	0	0	0	1	0	0	0	1
550+	0	0	0	0	0	0	0	0
<i>Total</i>	0	12	5	5	1	0	0	23

Number of Schools with Enrollment in Bottom 25% by School District - 2024-25



Source: Audited Register; includes district schools only; excludes pre-K centers and transfer schools.

ENROLLMENT VS. CAPACITY

Table 12: District 16 Enrollment vs. Capacity - Grades K-5

	Neighborhood(s)	Count of Schools	Enrollment	Capacity	Seat Excess / (Deficit)
District 16	N/A	13	2,444	4,823	2,379
Sub-District 1	Bedford-Stuyvesant	6	1,473	2,385	912
Sub-District 2	Bedford-Stuyvesant	7	971	2,438	1,467

Table 13: District 16 Enrollment vs. Capacity - Grades 6-8

	Neighborhood(s)	Count of Schools	Enrollment	Capacity	Seat Excess / (Deficit)
District 16	N/A	6	846	2,256	1,410
Sub-District 1	Bedford-Stuyvesant	2	395	675	280
Sub-District 2	Bedford-Stuyvesant	4	451	1,581	1,130

Source: Enrollment from 2024-25 Audited Register and grade-level capacity estimated from 2023-24 Blue Book; does not include new or planned capacity in 2024-25 and beyond.

BUILDING UTILIZATION

Each year, the SCA publishes the Blue Book, a report analyzing the capacity and enrollment for every NYCPS building across the city. "Under-Utilized Buildings" reflects the projected count of buildings that have at least 150 excess seats.

Table 14: Count of NYCPS Buildings by Utilization Status

	District 16	Brooklyn
Count of Buildings	22	489
Under-Utilized (UU) Buildings	16	196
150-299 Excess Seats	5	74
300+ Excess Seats	11	122
Over-Utilized Buildings	0	98

Source: Enrollment and capacity from 2023-24 Blue Book; UU status is from a preliminary 2024-25 UU analysis, and accounts for building enrollment and planning changes implemented in 2024-25 and after.

DISTRICT 75

NYCPS's District 75 provides specialized instructional support for students with significant challenges, such as Autism Spectrum Disorder (ASD), significant cognitive delays, emotional disability, sensory impairment, and multiple disabilities. District 75 serves students through a number of different program models.

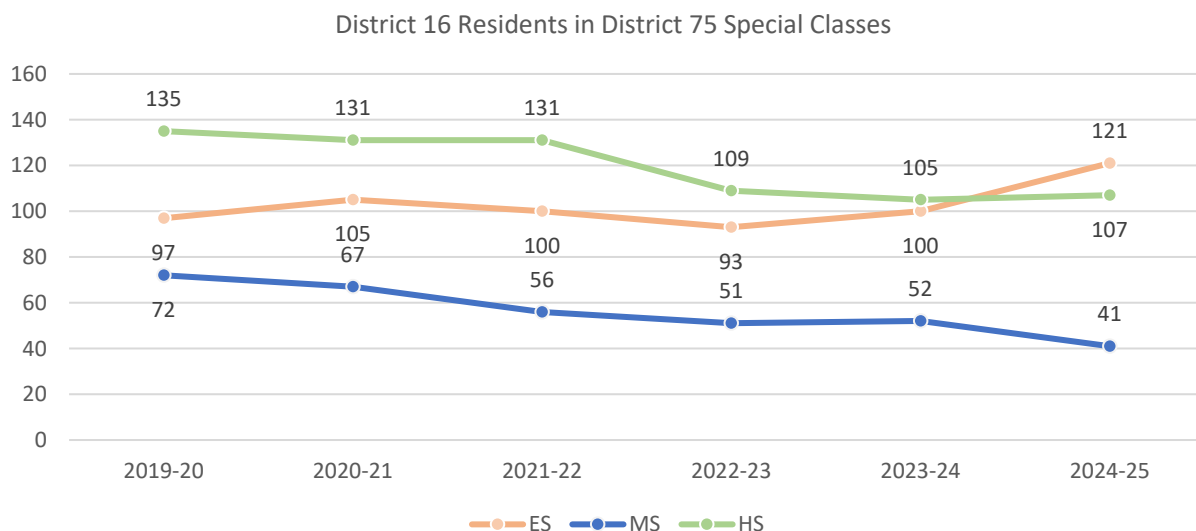
- Most District 75 students attend Special Class programs, which operate as distinct schools and may be located in standalone sites or co-located with district schools.
- A smaller number of students attend Inclusion Programs, in which students receive District 75 services within general education classes at a district school partner.

Table 15: District 75 Seat Need

	ES			MS			HS		
	District	Borough	City	District	Borough	City	District	Borough	City
Capacity	466	3,426	14,094	48	1,400	5,380	0	2,544	9,584
Residents	121	3,151	12,790	41	1,115	4,515	107	2,258	8,684
Deficit	No Deficit	No Deficit	No Deficit	No Deficit	No Deficit	No Deficit	-107	No Deficit	No Deficit

Table 16: District 75 Residential Growth

	2019-20	2020-21	2021-22	2022-23	2023-24	2024-25	5yr Change	1yr Change
ES	97	105	100	93	100	121	21%	25%
MS	72	67	56	51	52	41	-21%	-43%
HS	135	131	131	109	105	107	2%	-21%
All Grades	304	303	287	253	257	269	5%	-12%



Source: Audited Register

DISTRICT DEMOGRAPHICS

Table 17: Ethnicity

	K-5			6-8			9-12		
	District	Borough	City	District	Borough	City	District	Borough	City
% Asian	2%	17%	17%	1%	18%	17%	2%	17%	16%
% Hispanic	30%	30%	42%	31%	31%	44%	26%	32%	44%
% Black	61%	29%	22%	63%	32%	23%	65%	33%	24%
% White	3%	20%	15%	2%	17%	13%	2%	15%	12%
% Other	3%	4%	4%	2%	3%	3%	4%	3%	3%

Table 18: Special Populations

	K-5			6-8			9-12		
	District	Borough	City	District	Borough	City	District	Borough	City
Students with Disabilities	23%	20%	21%	27%	21%	21%	26%	18%	19%
English Language Learners	14%	21%	22%	11%	14%	15%	10%	14%	15%
Economically Disadvantaged	89%	76%	76%	86%	79%	77%	89%	78%	77%
Students in Temporary Housing	15%	10%	12%	17%	11%	12%	16%	10%	11%

Source: 2024-25 Audited Register; includes charter schools located in the district and may differ slightly from the NYCPS Demographic Snapshot.

SPECIAL PROGRAMS

Table 19: District 16 Special Program Summary

	District 16	Brooklyn
Schools with ASD Programs	3	46
<i>Horizon</i>	0	19
<i>Nest</i>	3	28
Schools with G&T Programs	4	43
Schools with Bilingual Ed Programs	4	115
<i>Dual Language (DL)</i>	3	72
<i>Transitional Bilingual Education (TBE)</i>	0	10
<i>DL/TBE</i>	1	33

Note: Schools with both *Horizon* and *Nest* programs are counted once in the top row but separately in the *Horizon* and *Nest* rows beneath.



Office of District Planning, 2025-2026

N
1 inch = 0.22 miles