

District 16

Data Summary

2027-2028 Strategic Planning Data Considerations

Contents

Citywide Enrollment	1
District Enrollment	2
Residential Population and District Retention	3
District Enrollment Model ("In-Out Model")	5
Articulation Trends	6
School Counts by Enrollment Range	7
Enrollment vs. Capacity	8
Building Utilization	8
District 75	9
District Demographics	10
Special Programs	10
New York State Class Size Law	11

CITYWIDE ENROLLMENT (DISTRICT AND CHARTER), 2016-17 TO 2025-26

New York City Public Schools (NYCPS) is committed to thoughtful collaboration with districts and communities to collectively strengthen schools, support students and families, and respond to demographic and population changes in New York City.



Source: Audited Register and Charter Headcount; includes district and charter school enrollment only

- Enrollment in District 1-32 schools decreased by about 3% in 2025-2026. While enrollment has been relatively stable for the past three years, this year's decline is the largest since the steeper declines following the onset of the COVID-19 pandemic.
- Citywide, K-12 enrollment in District 1-32 schools and charter schools has declined by about 14% since its peak in the 2016-2017 school year.

DISTRICT ENROLLMENT

District 16 Enrollment by Grade Level and Year (District Schools Only)

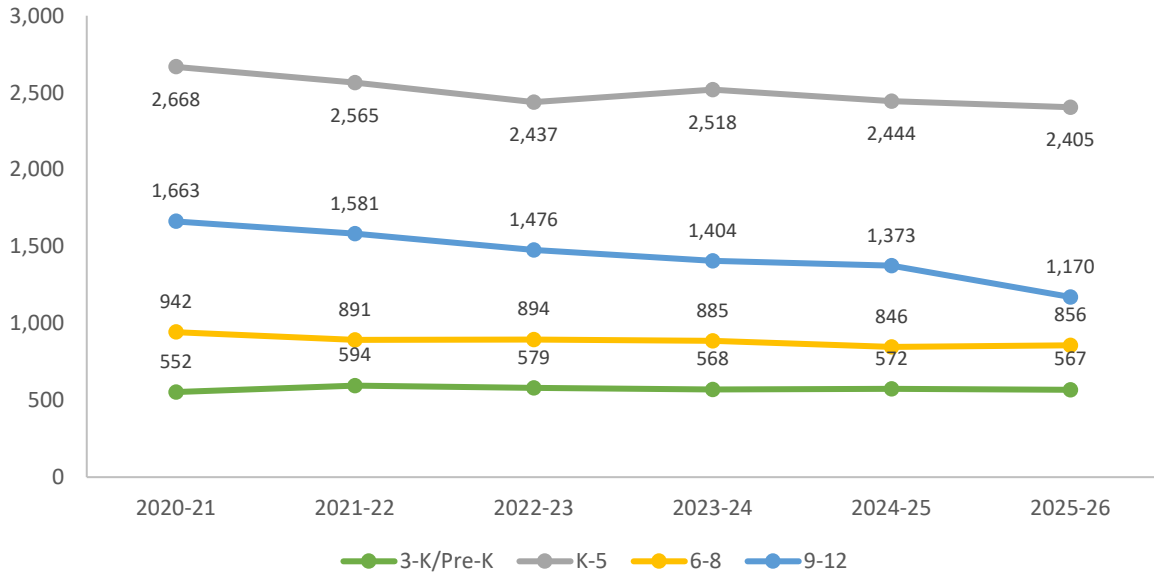


Table 1: District 16 Enrollment - 2020-21 to 2025-26

	2020-21	2021-22	2022-23	2023-24	2024-25	2025-26	1yr Change	5yr Change
3K	213	230	230	210	246	227	-8%	7%
PK	339	364	349	358	326	340	4%	0%
K-5	2,668	2,565	2,437	2,518	2,444	2,405	-2%	-10%
6-8	942	891	894	885	846	856	1%	-9%
9-12	1,663	1,581	1,476	1,404	1,373	1,170	-15%	-30%
Total	5,825	5,631	5,386	5,375	5,235	4,998	-5%	-14%
% Change YoY		-3.3%	-4.4%	-0.2%	-2.6%	-4.5%		

Table 2: District 16 Entry Grade Enrollment - 2020-21 to 2025-26

	2020-21	2021-22	2022-23	2023-24	2024-25	2025-26	1yr Change	5yr Change
K	446	437	433	435	418	392	-6.2%	-12%
6	348	284	276	262	297	296	-0.3%	-15%
9	388	385	302	308	322	234	-27.3%	-40%

Source: Audited Register, preliminary for 3-K and pre-K for 2025-26; includes enrollment in district schools only

RESIDENTIAL POPULATION AND DISTRICT RETENTION

District 16 K-12 Enrollment vs. Residential Population

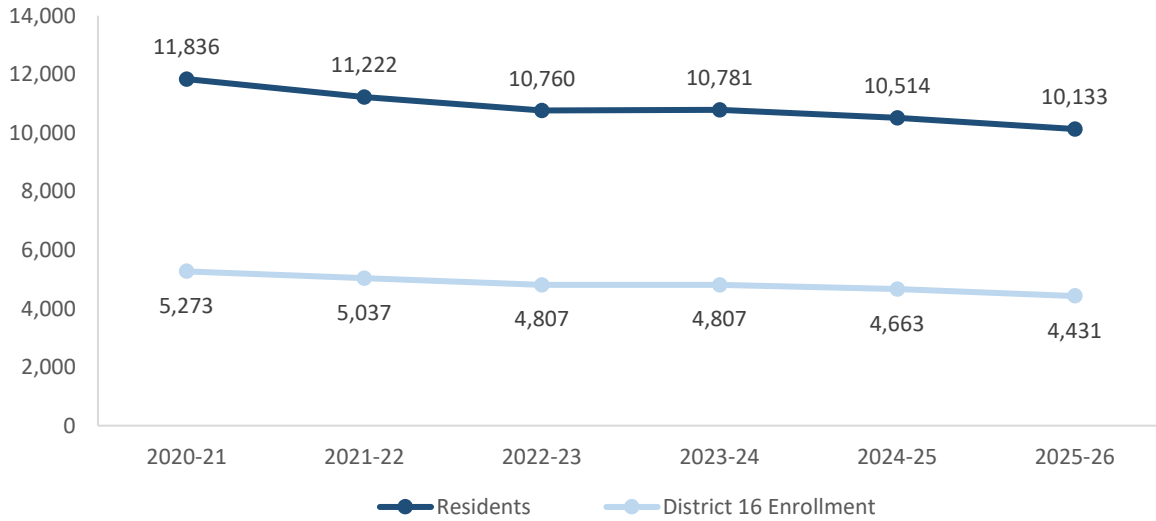


Table 3: District 16 Student Residential Population - 2020-21 to 2025-26

	2020-21	2021-22	2022-23	2023-24	2024-25	2025-26	1yr Change	5yr Change
K-5	5,047	4,688	4,458	4,516	4,458	4,258	-4%	-16%
6-8	2,878	2,690	2,528	2,465	2,340	2,277	-3%	-21%
9-12	3,911	3,844	3,774	3,800	3,716	3,598	-3%	-8%
Total	11,836	11,222	10,760	10,781	10,514	10,133	-4%	-14%
% Change YoY		-5.2%	-4.1%	0.2%	-2.5%	-3.6%		

- Between 2020-21 and 2025-26, the K-5 residential population in District 16 declined by 16%.
- During this time, the 6-8 residential population in District 16 declined by 21%.
- Citywide, the K-12 residential population declined by 7% since 2020-21.

Source: Residential population is the sum of students attending any NYCPS school, charter or non-public school; as such, this metric will not capture students who are home schooled, have dropped out, or are otherwise not enrolled in these school options.

Table 4: Elementary School District Retention (Where District 16 Residents Enroll in School)

	2020-21	2021-22	2022-23	2023-24	2024-25	2025-26	% of Residents	
							2020-21	2025-26
District 16 Schools	1,845	1,743	1,674	1,740	1,627	1,516	37%	36%
Other District Schools	1,073	1,005	970	1,002	1,072	1,020	21%	24%
Charter Schools	1,773	1,586	1,470	1,428	1,378	1,338	35%	31%
Non-Public Schools	241	247	246	239	257	249	5%	6%
Other	115	107	98	107	124	135	2%	3%
Total	5,047	4,688	4,458	4,516	4,458	4,258	100%	100%
% Change YoY		-7.1%	-4.9%	1.3%	-1.3%	-4.5%		

Table 5: Middle School District Retention (Where District 16 Residents Enroll in School)

	2020-21	2021-22	2022-23	2023-24	2024-25	2025-26	% of Residents	
							2020-21	2025-26
District 16 Schools	649	603	602	589	525	503	23%	22%
Other District Schools	896	809	729	715	716	689	31%	30%
Charter Schools	1,103	1,061	998	963	904	880	38%	39%
Non-Public Schools	152	144	133	138	139	154	5%	7%
Other	78	73	66	60	56	51	3%	2%
Total	2,878	2,690	2,528	2,465	2,340	2,277	100%	100%
% Change YoY		-6.5%	-6.0%	-2.5%	-5.1%	-2.7%		

Table 6: Where District 16 Students Live - Grades K-5

	K-5		% of Students	
	2020-21	2025-26	2020-21	2025-26
District 16	1,845	1,516	69%	63%
Other District	823	889	31%	37%
	2,668	2,405	100%	100%

Table 7: Where District 16 Students Live - Grades 6-8

	6-8		% of Students	
	2020-21	2025-26	2020-21	2025-26
District 16	649	503	69%	59%
Other District	293	353	31%	41%
	942	856	100%	100%

Citywide Trends

- Citywide, the average **District Retention Rate** (the percent of students living in a district who enroll in a district school in that district) is 53% for ES and 48% for MS.
- Citywide, the average **District Enrollment Rate** (the percent of students enrolled in district schools who live in that district) is 83% for ES and 76% for MS.

Source: Audited Register for NYCPS and charter schools; NYCPS administrative data for non-public schools

DISTRICT ENROLLMENT MODEL ("IN-OUT MODEL")

The table below depicts the prevailing trends for students coming into the district ("IN") and leaving the district ("OUT") to help identify the primary drivers of district school enrollment change.

Table 8: In-Out Model - ES and MS

	ES			MS		
	2020-21	2025-26	% Change	2020-21	2025-26	% Change
Residents of District 16	5,047	4,258	-16%	2,878	2,277	-21%
- OUT to other districts	-1,073	-1,020	-5%	-896	-689	-23%
- OUT to D75/D79	-115	-135	17%	-78	-51	-35%
- OUT to charters	-1,773	-1,338	-25%	-1,103	-880	-20%
- OUT to Non-Public Schools	-241	-249	3%	-152	-154	1%
Total OUT	-3,202	-2,742	-14%	-2,229	-1,774	-20%
+ IN from other districts	+823	+889	8%	+293	+353	20%
D16 Enrollment	2,668	2,405	-10%	942	856	-9%

Source: Audited Register for NYCPS and charter schools; NYCPS administrative data for non-public schools

Students Leaving the District:

- At the elementary school level, the largest number of students leaving District 16 enroll in charter schools. Since 2020-21, this number has decreased by 25%, as compared to the overall number of elementary school-aged residents, which has decreased by 16%.
- At the middle school level, the largest number of students leaving District 16 enroll in charter schools. Since 2020-21, this number has decreased by 20%, as compared to the overall number of middle school-aged residents, which has decreased by 21%.

Students Coming into the District:

- At the elementary school level, a smaller number of students living in other districts come into District 16 schools (889) than District 16 residents who leave for other district schools (1,020).
- At the middle school level, a smaller number of students living in other districts come into District 16 schools (353) than District 16 residents who leave for other district schools (689).

ARTICULATION TRENDS

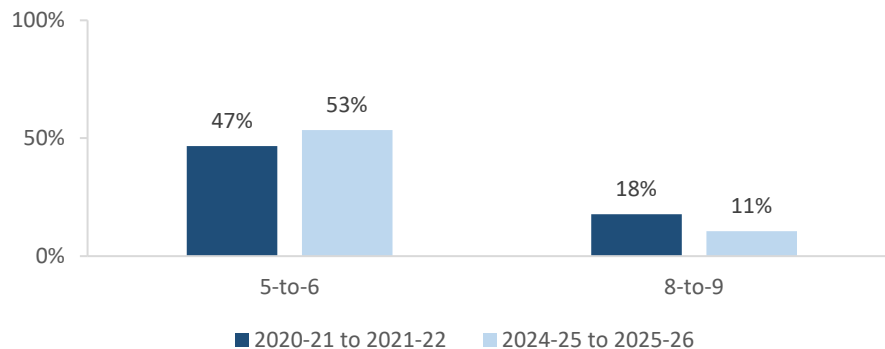
Table 9: 5-to-6 Articulation (Where District 16 5th Graders Enrolled the Following Year)

	2020-21 to 2021-22		2024-25 to 2025-26	
	#	%	#	%
District 16 Schools	219	47%	209	53%
Other District Schools	141	30%	108	28%
D75 Schools	0	0%	0	0%
D79 Schools	0	0%	0	0%
Charter Schools	64	14%	59	15%
Non-Public Schools	4	1%	1	0%
Out of NYC	32	7%	15	4%
Other	10	2%	0	0%
Total	470	100%	392	100%

Table 10: 8-to-9 Articulation (Where District 16 8th Graders Enrolled the Following Year)

	2020-21 to 2021-22		2024-25 to 2025-26	
	#	%	#	%
District 16 Schools	54	18%	30	11%
Other District Schools	207	67%	219	77%
D75 Schools	1	0%	0	0%
D79 Schools	0	0%	1	0%
Charter Schools	18	6%	20	7%
Non-Public Schools	3	1%	0	0%
Out of NYC	19	6%	13	5%
Other	5	2%	2	1%
Total	307	100%	285	100%

District 16 Students Remaining in District the Following Year



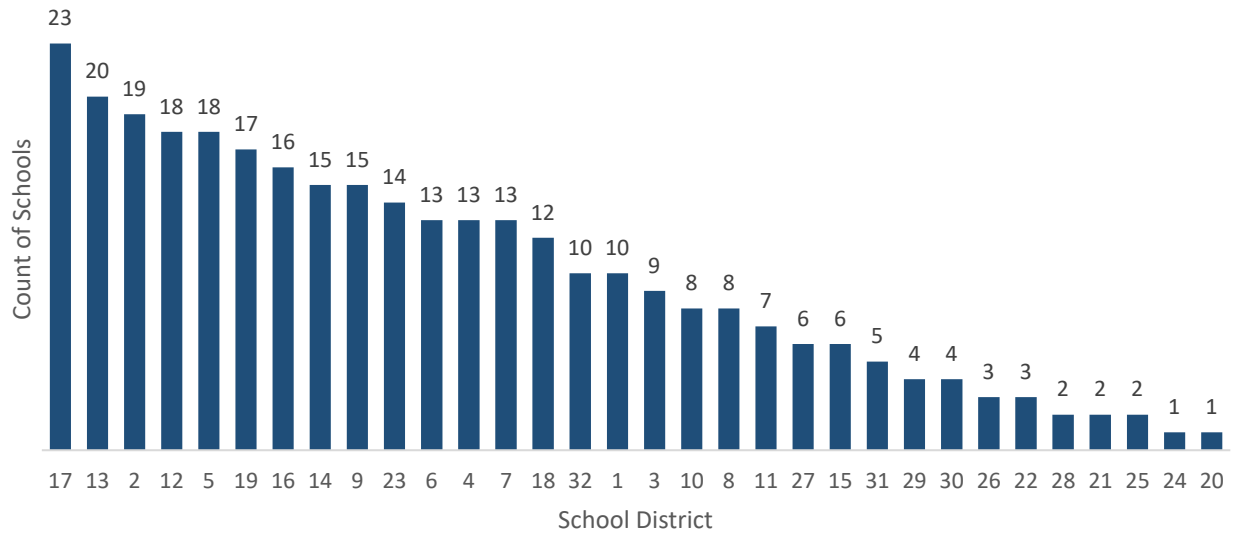
- Citywide, the average percent of graduating 5th graders who remain at a district school in the same district for 6th grade is 73%; for graduating 8th graders, the average percent of students who remain in the same district for 9th grade is 38%.

SCHOOL COUNTS BY ENROLLMENT RANGE

Table 11: District 16 School Counts by Enrollment Range (Grades K-12, Excludes 3-K and Pre-K)

Enrollment Range	School Level							Total
	ECC	ES	MS	HS	K-8	6-12	K-12	
Less than 150	0	3	2	2	0	0	0	7
150-249	0	5	3	1	1	0	0	10
250-349	0	2	0	1	0	0	0	3
350-449	0	1	0	1	0	0	0	2
450-549	0	0	0	0	0	0	0	0
550+	0	0	0	0	0	0	0	0
<i>Total</i>	0	11	5	5	1	0	0	22

Number of Schools with Enrollment in Bottom 25% by School District - 2025-26



Source: Audited Register; includes district schools only; excludes pre-K centers, transfer schools, and schools phasing in.

ENROLLMENT VS. CAPACITY

Table 12: District 16 Enrollment vs. Capacity - Grades K-5

	Neighborhood	Enrollment	Capacity	Seat Excess / Deficit
District 16	N/A	2,405	4,509	2,104
Sub-District 1	Bedford-Stuyvesant South	1,497	2,397	900
Sub-District 2	Bedford-Stuyvesant North	908	2,112	1,204

Table 13: District 16 Enrollment vs. Capacity - Grades 6-8

	Neighborhood	Enrollment	Capacity	Seat Excess / Deficit
District 16	N/A	856	2,225	1,369
Sub-District 1	Bedford-Stuyvesant South	421	675	254
Sub-District 2	Bedford-Stuyvesant North	435	1,550	1,115

Source: Enrollment from 2025-26 Audited Register and grade-level capacity estimated for 2025-26.

BUILDING UTILIZATION

Each year, the SCA publishes the Blue Book, a report analyzing the capacity and enrollment for every NYCPS building across the city. "Under-Utilized Buildings" reflects the projected count of buildings that have at least 150 excess seats.

Table 14: Count of NYCPS Buildings by Utilization Status

	District 16	Brooklyn
Count of Buildings	18	427
Under-Utilized (UU) Buildings	17	206
150-299 Excess Seats	7	77
300+ Excess Seats	10	129
Over-Utilized Buildings	0	88

Source: 2025-26 enrollment and 2024-25 capacity; UU status is based on a preliminary 2025-26 Under-Utilized space analysis, and accounts for building enrollment in 2025-26 and changes planned for 2026-27.

DISTRICT 75

NYCPS's District 75 provides specialized instructional support for students with significant challenges, such as Autism Spectrum Disorder (ASD), significant cognitive delays, emotional disability, sensory impairment, and multiple disabilities. District 75 serves students through a number of different program models.

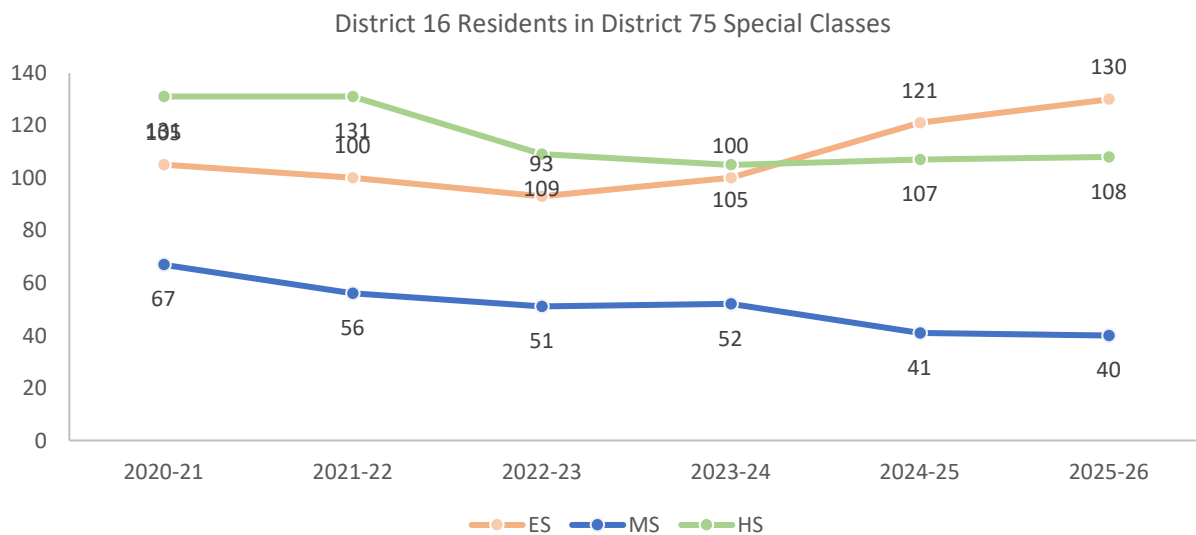
- Most District 75 students attend Special Class programs, which operate as distinct schools and may be located in standalone sites or co-located with district schools.
- A smaller number of students attend Inclusion Programs, in which students receive District 75 services within general education classes at a district school partner.

Table 15: District 75 Seat Need

	ES			MS			HS		
	District	Borough	City	District	Borough	City	District	Borough	City
Capacity	478	3,792	15,098	48	1,340	5,370	0	2,572	9,948
Residents	130	3,542	13,934	40	1,127	4,678	108	2,300	8,874
Deficit	No Deficit	No Deficit	No Deficit	No Deficit	No Deficit	No Deficit	-108	No Deficit	No Deficit

Table 16: District 75 Residential Change in District 16

	2020-21	2021-22	2022-23	2023-24	2024-25	2025-26	1yr Change	5yr Change
ES	105	100	93	100	121	130	7%	24%
MS	67	56	51	52	41	40	-2%	-40%
HS	131	131	109	105	107	108	1%	-18%
All Grades	303	287	253	257	269	278	3%	-8%



Source: Audited Register

DISTRICT DEMOGRAPHICS

Table 17: Ethnicity

	K-5			6-8			9-12		
	District	Borough	City	District	Borough	City	District	Borough	City
% Asian and Pacific Islander	2%	17%	17%	1%	18%	17%	2%	17%	17%
% Hispanic	30%	29%	42%	31%	31%	43%	28%	32%	44%
% Black	61%	29%	22%	63%	31%	23%	65%	33%	24%
% White	4%	20%	15%	2%	17%	13%	1%	15%	12%
% Multi-Racial	2%	3%	2%	1%	2%	2%	1%	1%	1%
% Native American	1%	1%	1%	1%	1%	1%	2%	1%	1%
% Other	0%	0%	0%	0%	0%	0%	0%	1%	1%

Table 18: Special Populations

	K-5			6-8			9-12		
	District	Borough	City	District	Borough	City	District	Borough	City
Students with Disabilities	24%	22%	23%	27%	21%	22%	28%	19%	19%
English Language Learners	13%	19%	20%	9%	13%	13%	10%	13%	13%
Economically Disadvantaged	87%	73%	73%	84%	76%	74%	87%	76%	75%
Students in Temporary Housing	15%	10%	11%	17%	11%	12%	17%	10%	11%

Source: 2025-26 Audited Register; includes charter schools located in the district and may differ slightly from the NYCPS Demographic Snapshot.

SPECIAL PROGRAMS

Table 19: District 16 Special Program Summary

	District 16	Brooklyn
Schools with ASD Programs	3	49
<i>Horizon</i>	0	22
<i>Nest</i>	3	28
Schools with G&T Programs	4	43
Schools with Bilingual Ed Programs	4	117
<i>Dual Language (DL)</i>	3	75
<i>Transitional Bilingual Education (TBE)</i>	0	0
<i>DL/TBE</i>	1	42

Note: Schools with both Horizon and Nest programs are counted once in the top row but separately in the Horizon and Nest rows beneath.

NEW YORK STATE CLASS SIZE LAW

Class Size Compliance by District (2025-26)



Source: November 15, 2025 Annual Report on Implementation of New York State’s Class Size Caps, available at <https://infohub.nyced.org/docs/default-source/default-document-library/summary-report-11-15-25-final.pdf>

