

District 17

Data Summary

2026-2027 Strategic Planning Data Considerations

Contents

Citywide Enrollment	1
District Enrollment	2
Residential Population and District Retention	3
District ES and MS Enrollment Model ("In-Out Model")	5
Articulation Trends	6
School Counts by Enrollment Range	7
Enrollment vs. Capacity	8
Building Utilization	8
District 75	9
District Demographics	10
Special Programs	10

CITYWIDE ENROLLMENT (DISTRICT AND CHARTER), 2015-16 TO 2024-25

New York City Public Schools (NYCPS) is committed to thoughtful collaboration with districts and communities to collectively strengthen schools, support students and families, and respond to demographic and population changes in New York City.



Source: Audited Register and Charter Headcount; includes district and charter school enrollment only

- Enrollment in D1-32 schools decreased slightly in 2024-2025, remaining approximately stable compared to the steeper declines following the onset of the COVID-19 pandemic.
- Citywide, K-12 enrollment in District 1-32 schools and charter schools has declined by about 10% since its peak in the 2016-2017 school year.

DISTRICT ENROLLMENT

District 17 Enrollment by Grade Level and Year (District Schools Only)

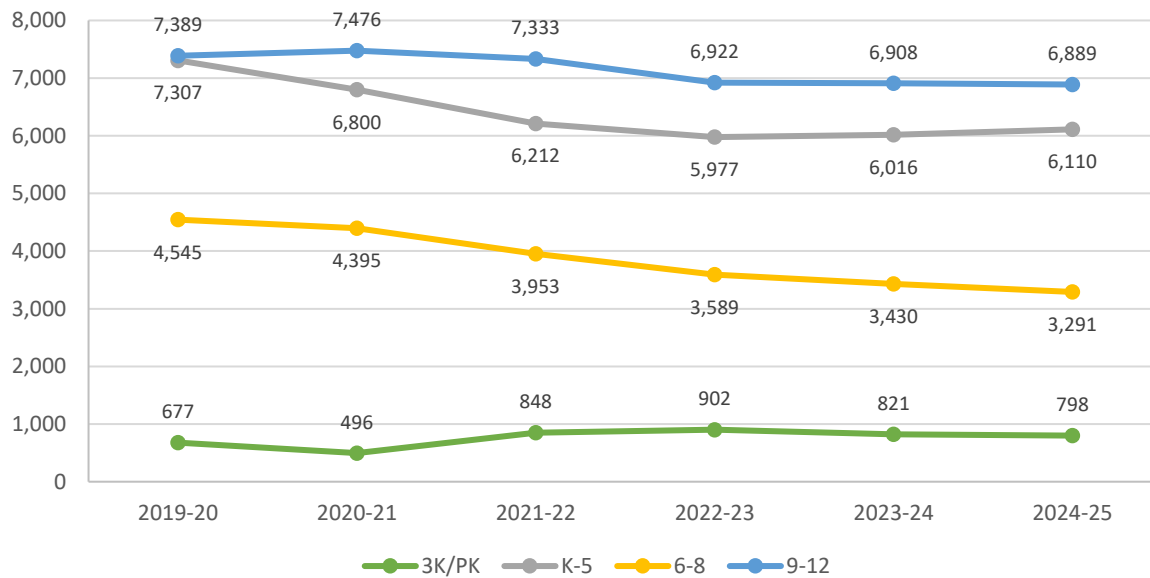


Table 1: District 17 Enrollment - 2019-20 to 2024-25

	2019-20	2020-21	2021-22	2022-23	2023-24	2024-25	1yr Change	5yr Change
3K	-	8	239	236	267	242	-9%	-
PK	677	488	609	666	554	556	0%	-18%
K-5	7,307	6,800	6,212	5,977	6,016	6,110	2%	-16%
6-8	4,545	4,395	3,953	3,589	3,430	3,291	-4%	-28%
9-12	7,389	7,476	7,333	6,922	6,908	6,889	0%	-7%
Total	19,918	19,167	18,346	17,390	17,175	17,088	-1%	-14%
% Change YoY		-3.8%	-4.3%	-5.2%	-1.2%	-0.5%		

Table 2: District 17 Entry Grade Enrollment - 2019-20 to 2024-25

	2019-20	2020-21	2021-22	2022-23	2023-24	2024-25	1yr Change	5yr Change
K	1,163	1,028	1,025	1,035	1,104	1,029	-6.8%	-12%
6	1,519	1,388	1,171	1,127	1,131	971	-14.1%	-36%
9	1,951	2,032	2,117	1,835	1,939	1,832	-5.5%	-6%

Source: Audited Register; includes enrollment in district schools only

RESIDENTIAL POPULATION AND DISTRICT RETENTION

District 17 K-12 Enrollment vs. Residential Population

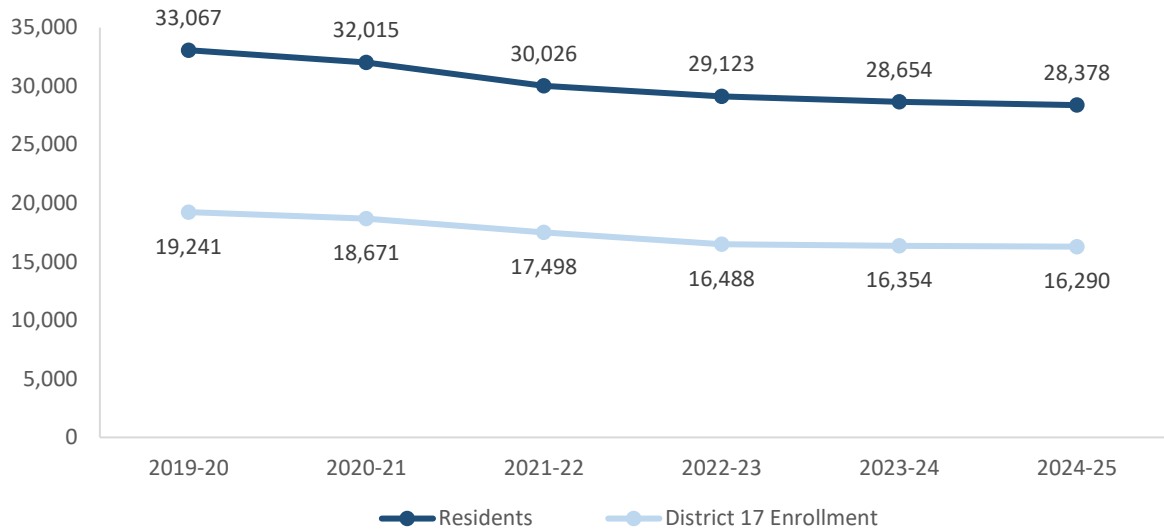


Table 3: District 17 Student Residential Population - 2019-20 to 2024-25

	2019-20	2020-21	2021-22	2022-23	2023-24	2024-25	1yr Change	5yr Change
K-5	14,930	14,238	13,275	12,842	12,686	12,525	-1%	-16%
6-8	7,594	7,561	6,968	6,756	6,552	6,438	-2%	-15%
9-12	10,543	10,216	9,783	9,525	9,416	9,415	0%	-11%
Total	33,067	32,015	30,026	29,123	28,654	28,378	-1%	-14%
% Change YoY		-3.2%	-6.2%	-3.0%	-1.6%	-1.0%		

- Between 2019-20 and 2024-25, the K-5 residential population in District 17 declined by 16%.
- During this time, the 6-8 residential population in District 17 declined by 15%.
- Citywide, the K-12 residential population declined by 8% since 2019-20.

Source: Residential population is the sum of students attending any NYCPS school, charter or non-public school; as such, this metric will not capture students who are home schooled, have dropped out, or are otherwise not enrolled in these school options.

Table 4: Elementary School District Retention (Where District 17 Residents Enroll in School)

	2019-20	2020-21	2021-22	2022-23	2023-24	2024-25	% of Residents	
							2019-20	2024-25
District 17 Schools	5,556	5,057	4,615	4,513	4,485	4,437	37%	35%
Other District Schools	1,903	1,760	1,605	1,609	1,710	1,795	13%	14%
Charter Schools	3,674	3,684	3,498	3,300	3,231	2,912	25%	23%
Non-Public Schools	3,603	3,545	3,371	3,232	3,042	3,104	24%	25%
Other	194	192	186	188	218	277	1%	2%
Total	14,930	14,238	13,275	12,842	12,686	12,525	100%	100%
% Change YoY		-4.6%	-6.8%	-3.3%	-1.2%	-1.3%		

Table 5: Middle School District Retention (Where District 17 Residents Enroll in School)

	2019-20	2020-21	2021-22	2022-23	2023-24	2024-25	% of Residents	
							2019-20	2024-25
District 17 Schools	2,778	2,712	2,393	2,193	2,083	1,964	37%	31%
Other District Schools	1,264	1,180	1,041	1,042	1,014	1,076	17%	17%
Charter Schools	1,796	1,849	1,819	1,760	1,750	1,697	24%	26%
Non-Public Schools	1,604	1,683	1,581	1,644	1,593	1,594	21%	25%
Other	152	137	134	117	112	107	2%	2%
Total	7,594	7,561	6,968	6,756	6,552	6,438	100%	100%
% Change YoY		-0.4%	-7.8%	-3.0%	-3.0%	-1.7%		

Table 6: Where District 17 Students Live - Grades K-5

	K-5		% of Students	
	2019-20	2024-25	2019-20	2024-25
District 17	5,556	4,437	76%	73%
Other District	1,751	1,673	24%	27%
	7,307	6,110	100%	100%

Table 7: Where District 17 Students Live - Grades 6-8

	6-8		% of Students	
	2019-20	2024-25	2019-20	2024-25
District 17	2,778	1,964	61%	60%
Other District	1,767	1,327	39%	40%
	4,545	3,291	100%	100%

Citywide Trends

- Citywide, the average **District Retention Rate** (the percent of students living in a district who enroll in a district school in that district) is 54% for ES and 49% for MS.

- Citywide, the average **District Enrollment Rate** (the percent of students enrolled in district schools who live in that district) is 83% for ES and 79% for MS.

Source: Audited Register for NYCPS and charter schools; NYCPS administrative data for non-public schools

DISTRICT ES AND MS ENROLLMENT MODEL ("IN-OUT MODEL")

The table below depicts the prevailing trends for students coming into the district ("IN") and leaving the district ("OUT") to help identify the primary drivers of district school enrollment change.

Table 8: In-Out Model - ES and MS

	ES			MS		
	2019-20	2024-25	% Chg	2019-20	2024-25	% Chg
Residents of District 17	14,930	12,525	-16%	7,594	6,438	-15%
- OUT to other districts	-1,903	-1,795	-6%	-1,264	-1,076	-15%
- OUT to D75/D79	-194	-277	43%	-152	-107	-30%
- OUT to charters	-3,674	-2,912	-21%	-1,796	-1,697	-6%
- OUT to Non-Public Schools	-3,603	-3,104	-14%	-1,604	-1,594	-1%
Total OUT	-9,374	-8,088	-14%	-4,816	-4,474	-7%
+ IN from other districts	+1,751	+1,673	-4%	+1,767	+1,327	-25%
D17 Enrollment	7,307	6,110	-16%	4,545	3,291	-28%

Source: Audited Register for NYCPS and charter schools; NYCPS administrative data for non-public schools

Students Leaving the District:

- At the elementary school level, the largest number of students leaving District 17 enroll in non-public schools. Since 2019-20, this number has decreased by 14%, as compared to the overall number of elementary school-aged residents, which has decreased by 16%.
- At the middle school level, the largest number of students leaving District 17 enroll in charter schools. Since 2019-20, this number has decreased by 6%, as compared to the overall number of middle school-aged residents, which has decreased by 15%.

Students Coming into the District:

- At the elementary school level, about the same number of students living in other districts come into District 17 schools (1,673) as District 17 residents who leave for other district schools (1,795).
- At the middle school level, a greater number of students living in other districts come into District 17 schools (1,327) than District 17 residents who leave for other district schools (1,076).

ARTICULATION TRENDS

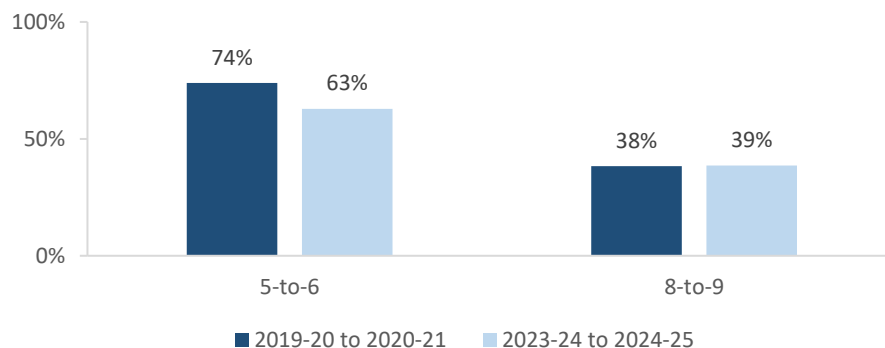
Table 9: 5-to-6 Articulation (Where District 17 5th Graders Enrolled the Following Year)

	2019-20 to 2020-21		2023-24 to 2024-25	
	#	%	#	%
District 17 Schools	973	74%	618	63%
Other District Schools	184	14%	214	22%
D75 Schools	0	0%	1	0%
D79 Schools	0	0%	0	0%
Charter Schools	103	8%	90	9%
Non-Public Schools	11	1%	6	1%
Out of NYC	40	3%	37	4%
Other	6	0%	17	2%
Total	1,317	100%	983	100%

Table 10: 8-to-9 Articulation (Where District 17 8th Graders Enrolled the Following Year)

	2019-20 to 2020-21		2023-24 to 2024-25	
	#	%	#	%
District 17 Schools	568	38%	448	39%
Other District Schools	815	55%	599	52%
D75 Schools	1	0%	1	0%
D79 Schools	0	0%	1	0%
Charter Schools	29	2%	36	3%
Non-Public Schools	6	0%	15	1%
Out of NYC	54	4%	52	4%
Other	7	0%	10	1%
Total	1,480	100%	1,162	100%

District 17 Students Remaining in District the Following Year



- Citywide, the average percent of graduating 5th graders who remain at a district school in the same district for 6th grade is 73%; for graduating 8th graders, the average percent of students who remain in the same district for 9th grade is 37%.

SCHOOL COUNTS BY ENROLLMENT RANGE

Table 11: District 17 School Counts by Enrollment Range

Enrollment Range	School Level							
	ECC	ES	MS	HS	K-8	6-12	K-12	Total
Less than 150	0	3	3	2	0	0	0	8
150-249	0	9	3	5	1	0	0	18
250-349	0	2	2	1	1	0	0	6
350-449	0	1	1	2	0	1	0	5
450-549	0	1	0	3	1	0	0	5
550+	0	2	0	1	1	2	0	6
<i>Total</i>	0	18	9	14	4	3	0	48

Number of Schools with Enrollment in Bottom 25% by School District - 2024-25



Source: Audited Register; includes district schools only; excludes pre-K centers and transfer schools.

ENROLLMENT VS. CAPACITY

Table 12: District 17 Enrollment vs. Capacity - Grades K-5

	Neighborhood(s)	Count of Schools	Enrollment	Capacity	Seat Excess / (Deficit)
District 17	N/A	22	6,110	9,223	3,113
Sub-District 1	Prospect Hts, Crown Hts	7	1,844	2,655	811
Sub-District 2	Prospect Hts, Crown Hts	11	2,569	4,635	2,066
Sub-District 3	Flatbush, Prospect Park S.	4	1,697	1,933	236

Table 13: District 17 Enrollment vs. Capacity - Grades 6-8

	Neighborhood(s)	Count of Schools	Enrollment	Capacity	Seat Excess / (Deficit)
District 17	N/A	16	3,291	6,522	3,231
Sub-District 1	Prospect Hts, Crown Hts	5	684	1,418	734
Sub-District 2	Prospect Hts, Crown Hts	7	1,782	3,626	1,844
Sub-District 3	Flatbush, Prospect Park S.	4	825	1,478	653

Source: Enrollment from 2024-25 Audited Register and grade-level capacity estimated from 2023-24 Blue Book; does not include new or planned capacity in 2024-25 and beyond.

BUILDING UTILIZATION

Each year, the SCA publishes the Blue Book, a report analyzing the capacity and enrollment for every NYCPS building across the city. "Under-Utilized Buildings" reflects the projected count of buildings that have at least 150 excess seats.

Table 14: Count of NYCPS Buildings by Utilization Status

	District 17	Brooklyn
Count of Buildings	42	489
Under-Utilized (UU) Buildings	24	196
150-299 Excess Seats	9	74
300+ Excess Seats	15	122
Over-Utilized Buildings	2	98

Source: Enrollment and capacity from 2023-24 Blue Book; UU status is from a preliminary 2024-25 UU analysis, and accounts for building enrollment and planning changes implemented in 2024-25 and after.

DISTRICT 75

NYCPS's District 75 provides specialized instructional support for students with significant challenges, such as Autism Spectrum Disorder (ASD), significant cognitive delays, emotional disability, sensory impairment, and multiple disabilities. District 75 serves students through a number of different program models.

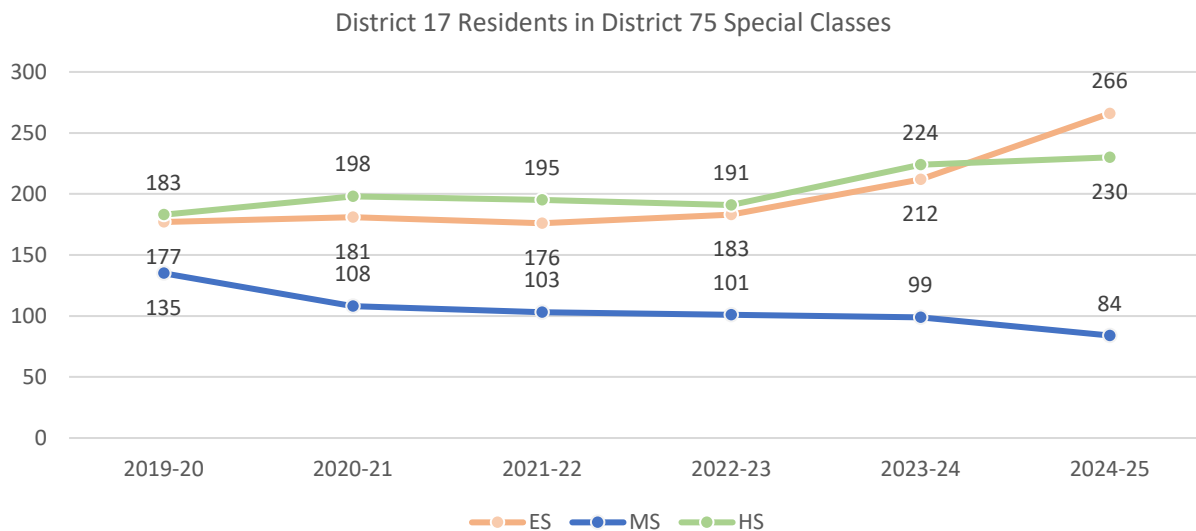
- Most District 75 students attend Special Class programs, which operate as distinct schools and may be located in standalone sites or co-located with district schools.
- A smaller number of students attend Inclusion Programs, in which students receive District 75 services within general education classes at a district school partner.

Table 15: District 75 Seat Need

	ES			MS			HS		
	District	Borough	City	District	Borough	City	District	Borough	City
Capacity	368	3,426	14,094	120	1,400	5,380	228	2,544	9,584
Residents	266	3,151	12,790	84	1,115	4,515	230	2,258	8,684
Deficit	No Deficit	No Deficit	No Deficit	No Deficit	No Deficit	No Deficit	-2	No Deficit	No Deficit

Table 16: District 75 Residential Growth

	2019-20	2020-21	2021-22	2022-23	2023-24	2024-25	5yr Change	1yr Change
ES	177	181	176	183	212	266	25%	50%
MS	135	108	103	101	99	84	-15%	-38%
HS	183	198	195	191	224	230	3%	26%
All Grades	495	487	474	475	535	580	8%	17%



Source: Audited Register

DISTRICT DEMOGRAPHICS

Table 17: Ethnicity

	K-5			6-8			9-12		
	District	Borough	City	District	Borough	City	District	Borough	City
% Asian	2%	17%	17%	2%	18%	17%	2%	17%	16%
% Hispanic	19%	30%	42%	17%	31%	44%	18%	32%	44%
% Black	69%	29%	22%	77%	32%	23%	75%	33%	24%
% White	5%	20%	15%	2%	17%	13%	2%	15%	12%
% Other	4%	4%	4%	3%	3%	3%	3%	3%	3%

Table 18: Special Populations

	K-5			6-8			9-12		
	District	Borough	City	District	Borough	City	District	Borough	City
Students with Disabilities	22%	20%	21%	20%	21%	21%	18%	18%	19%
English Language Learners	12%	21%	22%	10%	14%	15%	13%	14%	15%
Economically Disadvantaged	84%	76%	76%	85%	79%	77%	80%	78%	77%
Students in Temporary Housing	13%	10%	12%	14%	11%	12%	12%	10%	11%

Source: 2024-25 Audited Register; includes charter schools located in the district and may differ slightly from the NYCPS Demographic Snapshot.

SPECIAL PROGRAMS

Table 19: District 17 Special Program Summary

	District 17	Brooklyn
Schools with ASD Programs	3	46
<i>Horizon</i>	0	19
<i>Nest</i>	3	28
Schools with G&T Programs	3	43
Schools with Bilingual Ed Programs	6	115
<i>Dual Language (DL)</i>	3	72
<i>Transitional Bilingual Education (TBE)</i>	2	10
<i>DL/TBE</i>	1	33

Note: Schools with both Horizon and Nest programs are counted once in the top row but separately in the Horizon and Nest rows beneath.

