

District 18

Data Summary

2026-2027 Strategic Planning Data Considerations

Contents

Citywide Enrollment	1
District Enrollment	2
Residential Population and District Retention	3
District ES and MS Enrollment Model ("In-Out Model")	5
Articulation Trends	6
School Counts by Enrollment Range	7
Enrollment vs. Capacity	8
Building Utilization	8
District 75	9
District Demographics	10
Special Programs	10

CITYWIDE ENROLLMENT (DISTRICT AND CHARTER), 2015-16 TO 2024-25

New York City Public Schools (NYCPS) is committed to thoughtful collaboration with districts and communities to collectively strengthen schools, support students and families, and respond to demographic and population changes in New York City.



Source: Audited Register and Charter Headcount; includes district and charter school enrollment only

- Enrollment in D1-32 schools decreased slightly in 2024-2025, remaining approximately stable compared to the steeper declines following the onset of the COVID-19 pandemic.
- Citywide, K-12 enrollment in District 1-32 schools and charter schools has declined by about 10% since its peak in the 2016-2017 school year.

DISTRICT ENROLLMENT

District 18 Enrollment by Grade Level and Year (District Schools Only)

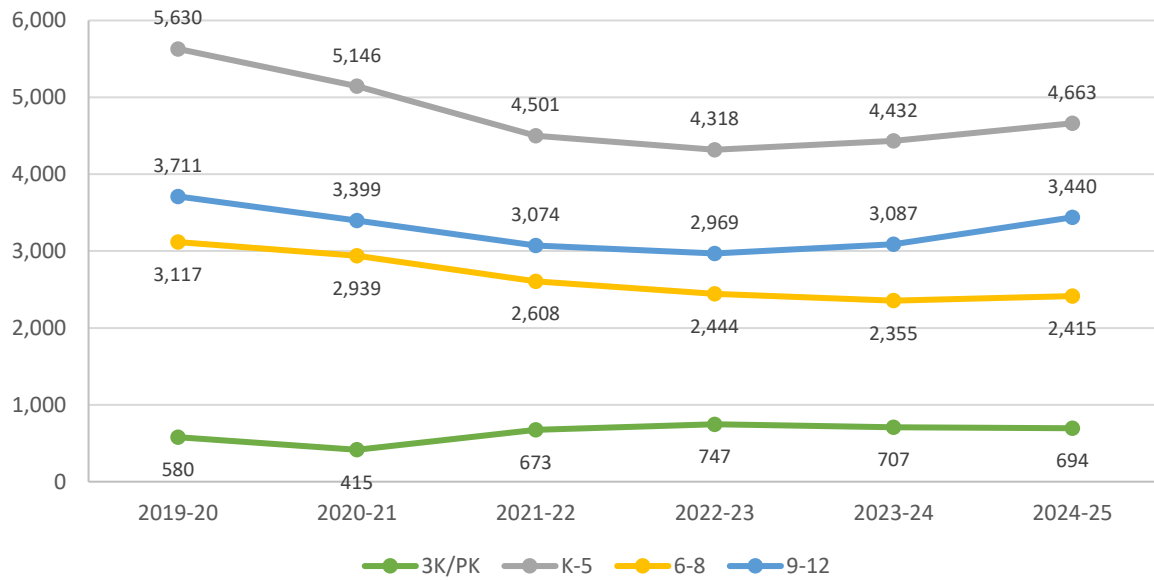


Table 1: District 18 Enrollment - 2019-20 to 2024-25

	2019-20	2020-21	2021-22	2022-23	2023-24	2024-25	1yr Change	5yr Change
3K	-	-	224	220	221	230	4%	-
PK	580	415	449	527	486	464	-5%	-20%
K-5	5,630	5,146	4,501	4,318	4,432	4,663	5%	-17%
6-8	3,117	2,939	2,608	2,444	2,355	2,415	3%	-23%
9-12	3,711	3,399	3,074	2,969	3,087	3,440	11%	-7%
Total	13,038	11,899	10,856	10,478	10,581	11,212	6%	-14%
% Change YoY		-8.7%	-8.8%	-3.5%	1.0%	6.0%		

Table 2: District 18 Entry Grade Enrollment - 2019-20 to 2024-25

	2019-20	2020-21	2021-22	2022-23	2023-24	2024-25	1yr Change	5yr Change
K	786	772	675	699	806	774	-4.0%	-2%
6	952	942	828	773	744	766	3.0%	-20%
9	914	863	835	749	785	890	13.4%	-3%

Source: Audited Register; includes enrollment in district schools only

RESIDENTIAL POPULATION AND DISTRICT RETENTION

District 18 K-12 Enrollment vs. Residential Population

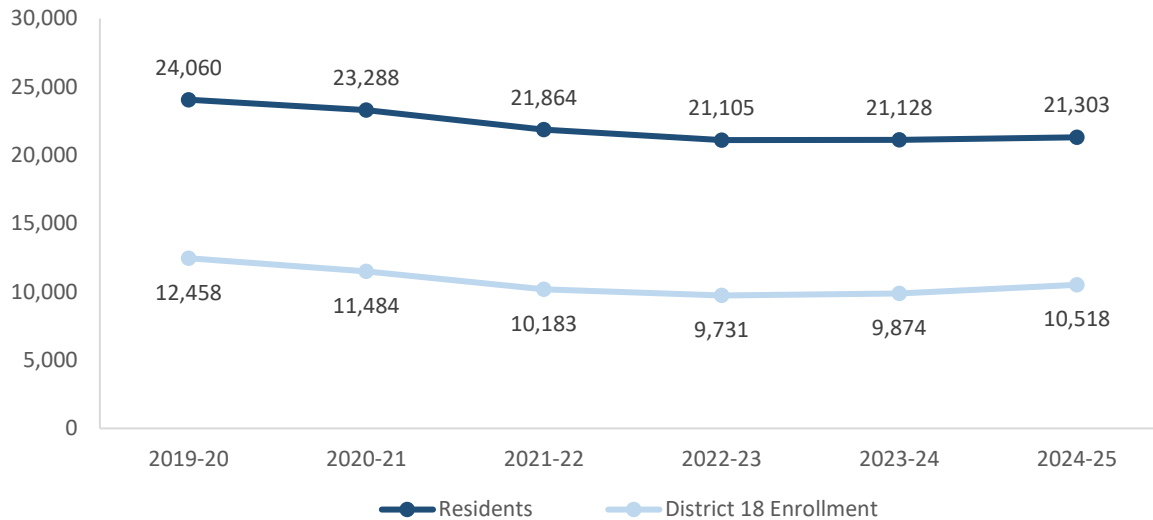


Table 3: District 18 Student Residential Population - 2019-20 to 2024-25

	2019-20	2020-21	2021-22	2022-23	2023-24	2024-25	1yr Change	5yr Change
K-5	10,350	9,977	9,260	8,927	9,166	9,165	0%	-11%
6-8	5,557	5,502	5,138	4,921	4,819	4,773	-1%	-14%
9-12	8,153	7,809	7,466	7,257	7,143	7,365	3%	-10%
Total	24,060	23,288	21,864	21,105	21,128	21,303	1%	-11%
% Change YoY		-3.2%	-6.1%	-3.5%	0.1%	0.8%		

- Between 2019-20 and 2024-25, the K-5 residential population in District 18 declined by 11%.
- During this time, the 6-8 residential population in District 18 declined by 14%.
- Citywide, the K-12 residential population declined by 8% since 2019-20.

Source: Residential population is the sum of students attending any NYCPS school, charter or non-public school; as such, this metric will not capture students who are home schooled, have dropped out, or are otherwise not enrolled in these school options.

Table 4: Elementary School District Retention (Where District 18 Residents Enroll in School)

	2019-20	2020-21	2021-22	2022-23	2023-24	2024-25	% of Residents	
							2019-20	2024-25
District 18 Schools	4,704	4,249	3,728	3,644	3,711	3,806	45%	42%
Other District Schools	945	1,011	981	923	1,025	1,040	9%	11%
Charter Schools	3,668	3,753	3,566	3,346	3,320	3,145	35%	34%
Non-Public Schools	786	734	786	818	892	920	8%	10%
Other	247	230	199	196	218	254	2%	3%
Total	10,350	9,977	9,260	8,927	9,166	9,165	100%	100%
% Change YoY		-3.6%	-7.2%	-3.6%	2.7%	0.0%		

Table 5: Middle School District Retention (Where District 18 Residents Enroll in School)

	2019-20	2020-21	2021-22	2022-23	2023-24	2024-25	% of Residents	
							2019-20	2024-25
District 18 Schools	2,412	2,283	2,041	1,879	1,871	1,853	43%	39%
Other District Schools	992	880	812	710	730	721	18%	15%
Charter Schools	1,597	1,811	1,797	1,791	1,690	1,649	29%	35%
Non-Public Schools	443	418	364	418	409	442	8%	9%
Other	113	110	124	123	119	108	2%	2%
Total	5,557	5,502	5,138	4,921	4,819	4,773	100%	100%
% Change YoY		-1.0%	-6.6%	-4.2%	-2.1%	-1.0%		

Table 6: Where District 18 Students Live - Grades K-5

	K-5		% of Students	
	2019-20	2024-25	2019-20	2024-25
District 18	4,704	3,806	84%	82%
Other District	926	857	16%	18%
	5,630	4,663	100%	100%

Table 7: Where District 18 Students Live - Grades 6-8

	6-8		% of Students	
	2019-20	2024-25	2019-20	2024-25
District 18	2,412	1,853	77%	77%
Other District	705	562	23%	23%
	3,117	2,415	100%	100%

Citywide Trends

- Citywide, the average **District Retention Rate** (the percent of students living in a district who enroll in a district school in that district) is 54% for ES and 49% for MS.
- Citywide, the average **District Enrollment Rate** (the percent of students enrolled in district schools who live in that district) is 83% for ES and 79% for MS.

Source: Audited Register for NYCPS and charter schools; NYCPS administrative data for non-public schools

DISTRICT ES AND MS ENROLLMENT MODEL ("IN-OUT MODEL")

The table below depicts the prevailing trends for students coming into the district ("IN") and leaving the district ("OUT") to help identify the primary drivers of district school enrollment change.

Table 8: In-Out Model - ES and MS

	ES			MS		
	2019-20	2024-25	% Chg	2019-20	2024-25	% Chg
Residents of District 18	10,350	9,165	-11%	5,557	4,773	-14%
- OUT to other districts	-945	-1,040	10%	-992	-721	-27%
- OUT to D75/D79	-247	-254	3%	-113	-108	-4%
- OUT to charters	-3,668	-3,145	-14%	-1,597	-1,649	3%
- OUT to Non-Public Schools	-786	-920	17%	-443	-442	0%
Total OUT	-5,646	-5,359	-5%	-3,145	-2,920	-7%
+ IN from other districts	+926	+857	-7%	+705	+562	-20%
D18 Enrollment	5,630	4,663	-17%	3,117	2,415	-23%

Source: Audited Register for NYCPS and charter schools; NYCPS administrative data for non-public schools

Students Leaving the District:

- At the elementary school level, the largest number of students leaving District 18 enroll in charter schools. Since 2019-20, this number has decreased by 14%, as compared to the overall number of elementary school-aged residents, which has decreased by 11%.
- At the middle school level, the largest number of students leaving District 18 enroll in charter schools. Since 2019-20, this number has grown by 3%, as compared to the overall number of middle school-aged residents, which has decreased by 14%.

Students Coming into the District:

- At the elementary school level, a smaller number of students living in other districts come into District 18 schools (857) than District 18 residents who leave for other district schools (1,040).
- At the middle school level, a smaller number of students living in other districts come into District 18 schools (562) than District 18 residents who leave for other district schools (721).

ARTICULATION TRENDS

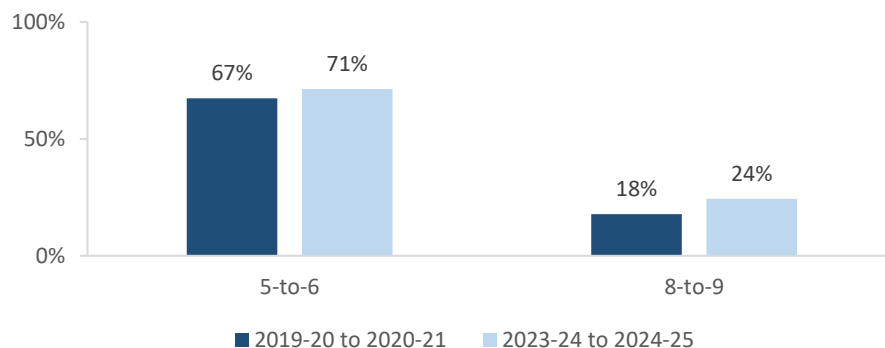
Table 9: 5-to-6 Articulation (Where District 18 5th Graders Enrolled the Following Year)

	2019-20 to 2020-21		2023-24 to 2024-25	
	#	%	#	%
District 18 Schools	717	67%	519	71%
Other District Schools	180	17%	110	15%
D75 Schools	1	0%	0	0%
D79 Schools	0	0%	0	0%
Charter Schools	108	10%	45	6%
Non-Public Schools	11	1%	10	1%
Out of NYC	41	4%	38	5%
Other	7	1%	6	1%
Total	1,065	100%	728	100%

Table 10: 8-to-9 Articulation (Where District 18 8th Graders Enrolled the Following Year)

	2019-20 to 2020-21		2023-24 to 2024-25	
	#	%	#	%
District 18 Schools	190	18%	203	24%
Other District Schools	768	72%	539	65%
D75 Schools	1	0%	1	0%
D79 Schools	0	0%	0	0%
Charter Schools	41	4%	19	2%
Non-Public Schools	16	2%	19	2%
Out of NYC	41	4%	47	6%
Other	9	1%	7	1%
Total	1,066	100%	835	100%

District 18 Students Remaining in District the Following Year



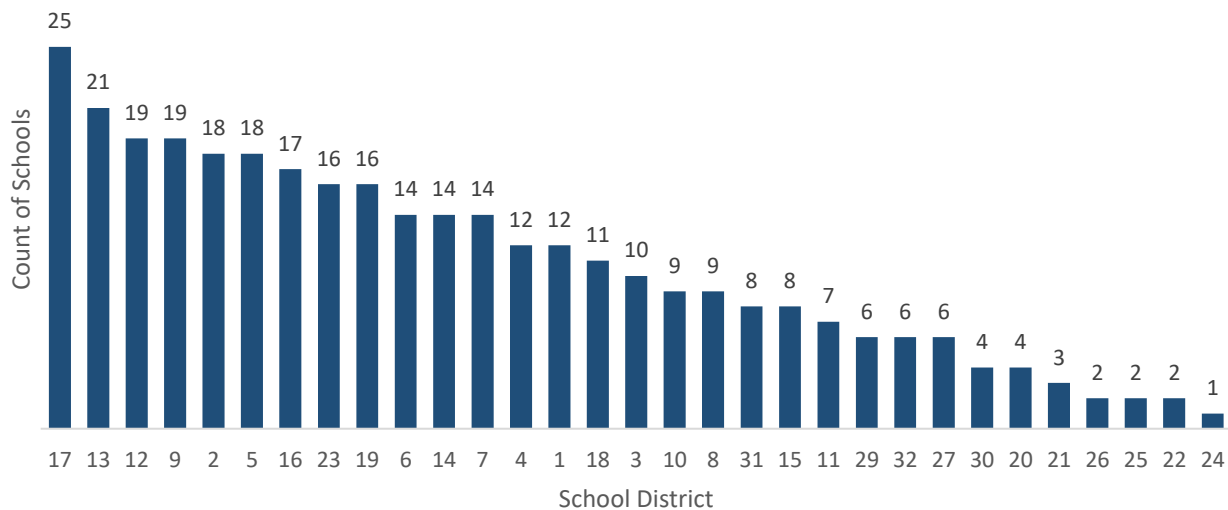
- Citywide, the average percent of graduating 5th graders who remain at a district school in the same district for 6th grade is 73%; for graduating 8th graders, the average percent of students who remain in the same district for 9th grade is 37%.

SCHOOL COUNTS BY ENROLLMENT RANGE

Table 11: District 18 School Counts by Enrollment Range

Enrollment Range	School Level							
	ECC	ES	MS	HS	K-8	6-12	K-12	Total
Less than 150	0	0	0	0	0	0	0	0
150-249	0	1	5	6	0	0	0	12
250-349	0	7	1	4	0	0	0	12
350-449	0	1	1	3	0	0	0	5
450-549	0	1	1	0	1	0	0	3
550+	0	2	0	0	0	0	0	2
<i>Total</i>	0	12	8	13	1	0	0	34

Number of Schools with Enrollment in Bottom 25% by School District - 2024-25



Source: Audited Register; includes district schools only; excludes pre-K centers and transfer schools.

ENROLLMENT VS. CAPACITY

Table 12: District 18 Enrollment vs. Capacity - Grades K-5

	Neighborhood(s)	Count of Schools	Enrollment	Capacity	Seat Excess / (Deficit)
District 18	N/A	13	4,663	6,867	2,204
Sub-District 1	East Flatbush	8	2,555	4,131	1,576
Sub-District 2	Canarsie	5	2,108	2,736	628

Table 13: District 18 Enrollment vs. Capacity - Grades 6-8

	Neighborhood(s)	Count of Schools	Enrollment	Capacity	Seat Excess / (Deficit)
District 18	N/A	9	2,415	5,374	2,959
Sub-District 1	East Flatbush	5	1,492	2,609	1,117
Sub-District 2	Canarsie	4	923	2,765	1,842

Source: Enrollment from 2024-25 Audited Register and grade-level capacity estimated from 2023-24 Blue Book; does not include new or planned capacity in 2024-25 and beyond.

BUILDING UTILIZATION

Each year, the SCA publishes the Blue Book, a report analyzing the capacity and enrollment for every NYCPS building across the city. "Under-Utilized Buildings" reflects the projected count of buildings that have at least 150 excess seats.

Table 14: Count of NYCPS Buildings by Utilization Status

	District 18	Brooklyn
Count of Buildings	32	489
Under-Utilized (UU) Buildings	18	196
150-299 Excess Seats	5	74
300+ Excess Seats	13	122
Over-Utilized Buildings	0	98

Source: Enrollment and capacity from 2023-24 Blue Book; UU status is from a preliminary 2024-25 UU analysis, and accounts for building enrollment and planning changes implemented in 2024-25 and after.

DISTRICT 75

NYCPS's District 75 provides specialized instructional support for students with significant challenges, such as Autism Spectrum Disorder (ASD), significant cognitive delays, emotional disability, sensory impairment, and multiple disabilities. District 75 serves students through a number of different program models.

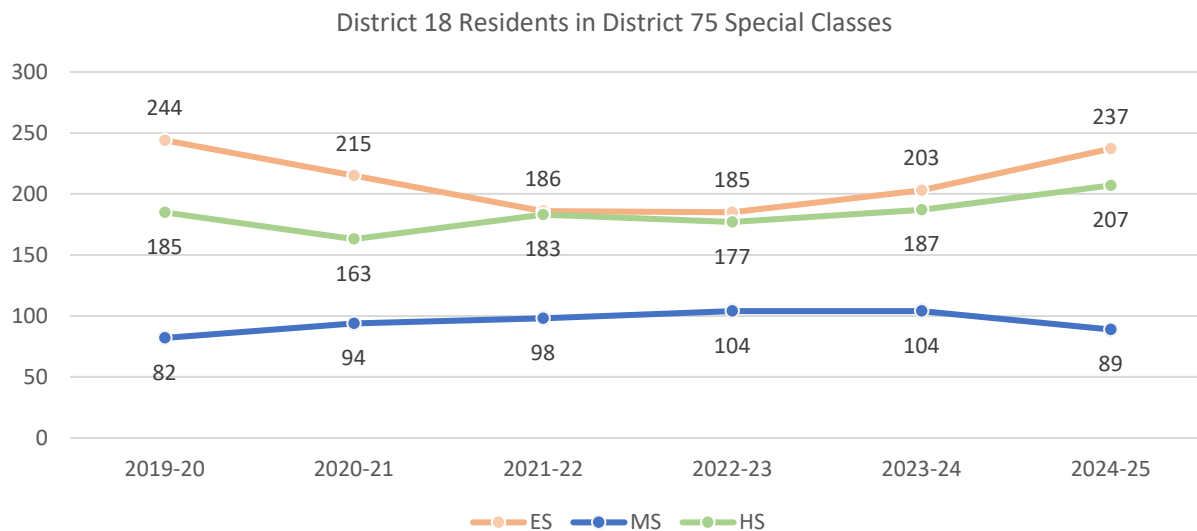
- Most District 75 students attend Special Class programs, which operate as distinct schools and may be located in standalone sites or co-located with district schools.
- A smaller number of students attend Inclusion Programs, in which students receive District 75 services within general education classes at a district school partner.

Table 15: District 75 Seat Need

	ES			MS			HS		
	District	Borough	City	District	Borough	City	District	Borough	City
Capacity	106	3,426	14,094	38	1,400	5,380	152	2,544	9,584
Residents	237	3,151	12,790	89	1,115	4,515	207	2,258	8,684
Deficit	-131	No Deficit	No Deficit	-51	No Deficit	No Deficit	-55	No Deficit	No Deficit

Table 16: District 75 Residential Growth

	2019-20	2020-21	2021-22	2022-23	2023-24	2024-25	5yr Change	1yr Change
ES	244	215	186	185	203	237	17%	-3%
MS	82	94	98	104	104	89	-14%	9%
HS	185	163	183	177	187	207	11%	12%
All Grades	511	472	467	466	494	533	8%	4%



Source: Audited Register

DISTRICT DEMOGRAPHICS

Table 17: Ethnicity

	K-5			6-8			9-12		
	District	Borough	City	District	Borough	City	District	Borough	City
% Asian	2%	17%	17%	2%	18%	17%	3%	17%	16%
% Hispanic	10%	30%	42%	9%	31%	44%	15%	32%	44%
% Black	81%	29%	22%	83%	32%	23%	77%	33%	24%
% White	3%	20%	15%	3%	17%	13%	3%	15%	12%
% Other	3%	4%	4%	3%	3%	3%	3%	3%	3%

Table 18: Special Populations

	K-5			6-8			9-12		
	District	Borough	City	District	Borough	City	District	Borough	City
Students with Disabilities	19%	20%	21%	20%	21%	21%	20%	18%	19%
English Language Learners	9%	21%	22%	10%	14%	15%	16%	14%	15%
Economically Disadvantaged	83%	76%	76%	81%	79%	77%	81%	78%	77%
Students in Temporary Housing	11%	10%	12%	11%	11%	12%	15%	10%	11%

Source: 2024-25 Audited Register; includes charter schools located in the district and may differ slightly from the NYCPS Demographic Snapshot.

SPECIAL PROGRAMS

Table 19: District 18 Special Program Summary

	District 18	Brooklyn
Schools with ASD Programs	3	46
<i>Horizon</i>	1	19
<i>Nest</i>	2	28
Schools with G&T Programs	2	43
Schools with Bilingual Ed Programs	0	115
<i>Dual Language (DL)</i>	0	72
<i>Transitional Bilingual Education (TBE)</i>	0	10
<i>DL/TBE</i>	0	33

Note: Schools with both *Horizon* and *Nest* programs are counted once in the top row but separately in the *Horizon* and *Nest* rows beneath.

