

District 19

Data Summary

2026-2027 Strategic Planning Data Considerations

Contents

Citywide Enrollment	1
District Enrollment	2
Residential Population and District Retention	3
District ES and MS Enrollment Model ("In-Out Model")	5
Articulation Trends	6
School Counts by Enrollment Range	7
Enrollment vs. Capacity	8
Building Utilization	8
District 75	9
District Demographics	10
Special Programs	10

CITYWIDE ENROLLMENT (DISTRICT AND CHARTER), 2015-16 TO 2024-25

New York City Public Schools (NYCPS) is committed to thoughtful collaboration with districts and communities to collectively strengthen schools, support students and families, and respond to demographic and population changes in New York City.



Source: Audited Register and Charter Headcount; includes district and charter school enrollment only

- Enrollment in D1-32 schools decreased slightly in 2024-2025, remaining approximately stable compared to the steeper declines following the onset of the COVID-19 pandemic.
- Citywide, K-12 enrollment in District 1-32 schools and charter schools has declined by about 10% since its peak in the 2016-2017 school year.

DISTRICT ENROLLMENT

District 19 Enrollment by Grade Level and Year (District Schools Only)

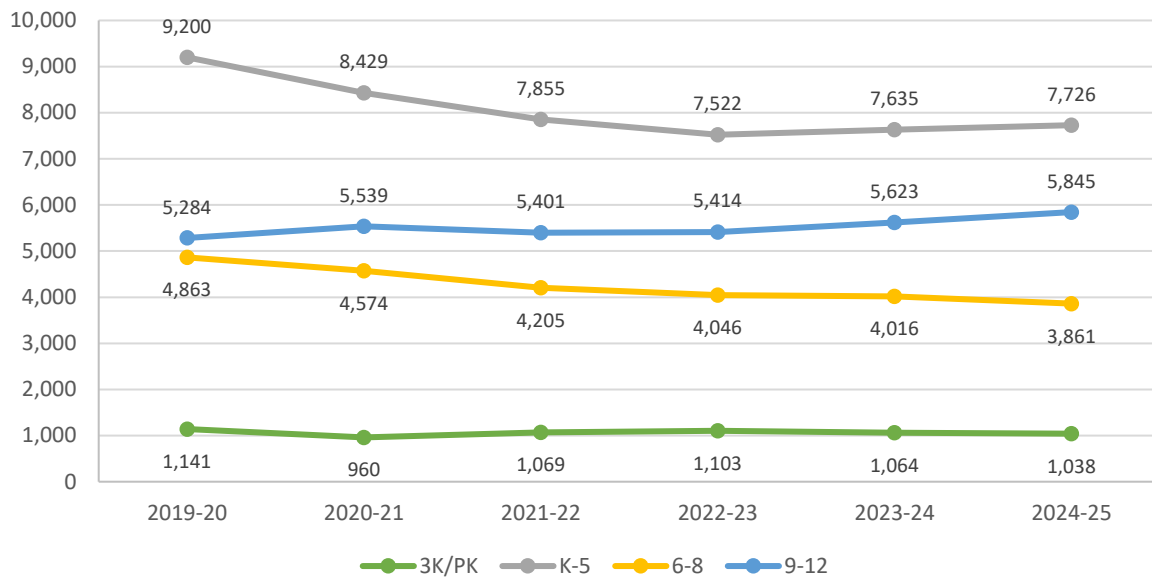


Table 1: District 19 Enrollment - 2019-20 to 2024-25

	2019-20	2020-21	2021-22	2022-23	2023-24	2024-25	1yr Change	5yr Change
3K	382	275	345	343	354	340	-4%	-11%
PK	759	685	724	760	710	698	-2%	-8%
K-5	9,200	8,429	7,855	7,522	7,635	7,726	1%	-16%
6-8	4,863	4,574	4,205	4,046	4,016	3,861	-4%	-21%
9-12	5,284	5,539	5,401	5,414	5,623	5,845	4%	11%
Total	20,488	19,502	18,530	18,085	18,338	18,470	1%	-10%
% Change YoY		-4.8%	-5.0%	-2.4%	1.4%	0.7%		

Table 2: District 19 Entry Grade Enrollment - 2019-20 to 2024-25

	2019-20	2020-21	2021-22	2022-23	2023-24	2024-25	1yr Change	5yr Change
K	1,421	1,230	1,345	1,237	1,302	1,239	-4.8%	-13%
6	1,593	1,424	1,366	1,297	1,282	1,182	-7.8%	-26%
9	1,584	1,641	1,600	1,546	1,629	1,678	3.0%	6%

Source: Audited Register; includes enrollment in district schools only

RESIDENTIAL POPULATION AND DISTRICT RETENTION

District 19 K-12 Enrollment vs. Residential Population

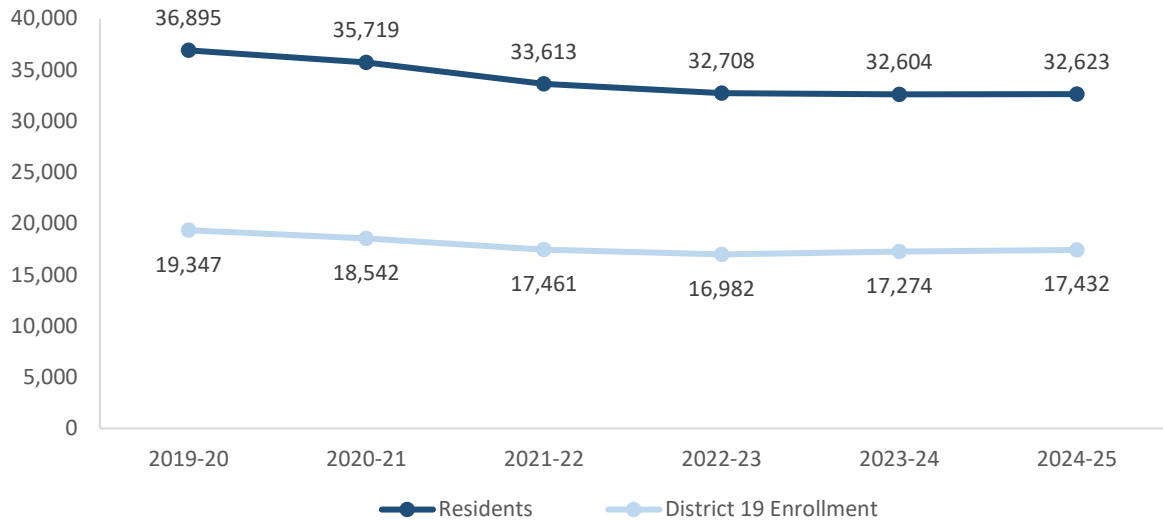


Table 3: District 19 Student Residential Population - 2019-20 to 2024-25

	2019-20	2020-21	2021-22	2022-23	2023-24	2024-25	1yr Change	5yr Change
K-5	16,110	15,242	14,274	13,877	13,790	13,777	0%	-14%
6-8	8,569	8,382	7,878	7,561	7,564	7,323	-3%	-15%
9-12	12,216	12,095	11,461	11,270	11,250	11,523	2%	-6%
Total	36,895	35,719	33,613	32,708	32,604	32,623	0%	-12%
% Change YoY		-3.2%	-5.9%	-2.7%	-0.3%	0.1%		

- Between 2019-20 and 2024-25, the K-5 residential population in District 19 declined by 14%.
- During this time, the 6-8 residential population in District 19 declined by 15%.
- Citywide, the K-12 residential population declined by 8% since 2019-20.

Source: Residential population is the sum of students attending any NYCPS school, charter or non-public school; as such, this metric will not capture students who are home schooled, have dropped out, or are otherwise not enrolled in these school options.

Table 4: Elementary School District Retention (Where District 19 Residents Enroll in School)

	2019-20	2020-21	2021-22	2022-23	2023-24	2024-25	% of Residents	
							2019-20	2024-25
District 19 Schools	8,438	7,655	7,136	6,911	6,896	6,891	52%	50%
Other District Schools	1,731	1,666	1,479	1,424	1,582	1,695	11%	12%
Charter Schools	4,899	4,949	4,744	4,648	4,408	4,272	30%	31%
Non-Public Schools	647	574	550	514	471	411	4%	3%
Other	395	398	365	380	433	508	2%	4%
Total	16,110	15,242	14,274	13,877	13,790	13,777	100%	100%
% Change YoY		-5.4%	-6.4%	-2.8%	-0.6%	-0.1%		

Table 5: Middle School District Retention (Where District 19 Residents Enroll in School)

	2019-20	2020-21	2021-22	2022-23	2023-24	2024-25	% of Residents	
							2019-20	2024-25
District 19 Schools	4,395	4,165	3,804	3,655	3,631	3,463	51%	47%
Other District Schools	1,492	1,327	1,215	1,142	1,109	1,072	17%	15%
Charter Schools	2,034	2,299	2,321	2,209	2,294	2,268	24%	31%
Non-Public Schools	421	376	326	358	332	346	5%	5%
Other	227	215	212	197	198	174	3%	2%
Total	8,569	8,382	7,878	7,561	7,564	7,323	100%	100%
% Change YoY		-2.2%	-6.0%	-4.0%	0.0%	-3.2%		

Table 6: Where District 19 Students Live - Grades K-5

	K-5		% of Students	
	2019-20	2024-25	2019-20	2024-25
District 19	8,438	6,891	92%	89%
Other District	762	835	8%	11%
	9,200	7,726	100%	100%

Table 7: Where District 19 Students Live - Grades 6-8

	6-8		% of Students	
	2019-20	2024-25	2019-20	2024-25
District 19	4,395	3,463	90%	90%
Other District	468	398	10%	10%
	4,863	3,861	100%	100%

Citywide Trends

- Citywide, the average **District Retention Rate** (the percent of students living in a district who enroll in a district school in that district) is 54% for ES and 49% for MS.
- Citywide, the average **District Enrollment Rate** (the percent of students enrolled in district schools who live in that district) is 83% for ES and 79% for MS.

Source: Audited Register for NYCPS and charter schools; NYCPS administrative data for non-public schools

DISTRICT ES AND MS ENROLLMENT MODEL ("IN-OUT MODEL")

The table below depicts the prevailing trends for students coming into the district ("IN") and leaving the district ("OUT") to help identify the primary drivers of district school enrollment change.

Table 8: In-Out Model - ES and MS

	ES			MS		
	2019-20	2024-25	% Chg	2019-20	2024-25	% Chg
Residents of District 19	16,110	13,777	-14%	8,569	7,323	-15%
- OUT to other districts	-1,731	-1,695	-2%	-1,492	-1,072	-28%
- OUT to D75/D79	-395	-508	29%	-227	-174	-23%
- OUT to charters	-4,899	-4,272	-13%	-2,034	-2,268	12%
- OUT to Non-Public Schools	-647	-411	-36%	-421	-346	-18%
Total OUT	-7,672	-6,886	-10%	-4,174	-3,860	-8%
+ IN from other districts	+762	+835	10%	+468	+398	-15%
D19 Enrollment	9,200	7,726	-16%	4,863	3,861	-21%

Source: Audited Register for NYCPS and charter schools; NYCPS administrative data for non-public schools

Students Leaving the District:

- At the elementary school level, the largest number of students leaving District 19 enroll in charter schools. Since 2019-20, this number has decreased by 13%, as compared to the overall number of elementary school-aged residents, which has decreased by 14%.
- At the middle school level, the largest number of students leaving District 19 enroll in charter schools. Since 2019-20, this number has grown by 12%, as compared to the overall number of middle school-aged residents, which has decreased by 15%.

Students Coming into the District:

- At the elementary school level, a smaller number of students living in other districts come into District 19 schools (835) than District 19 residents who leave for other district schools (1,695).
- At the middle school level, a smaller number of students living in other districts come into District 19 schools (398) than District 19 residents who leave for other district schools (1,072).

ARTICULATION TRENDS

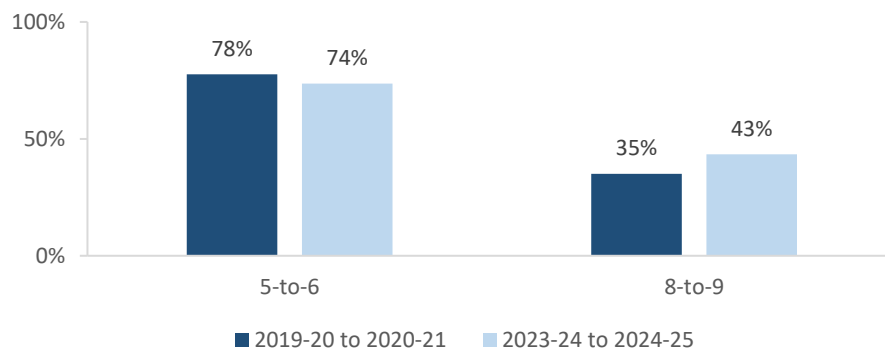
Table 9: 5-to-6 Articulation (Where District 19 5th Graders Enrolled the Following Year)

	2019-20 to 2020-21		2023-24 to 2024-25	
	#	%	#	%
District 19 Schools	1,251	78%	950	74%
Other District Schools	192	12%	180	14%
D75 Schools	0	0%	3	0%
D79 Schools	0	0%	1	0%
Charter Schools	72	4%	65	5%
Non-Public Schools	12	1%	11	1%
Out of NYC	64	4%	61	5%
Other	21	1%	20	2%
Total	1,612	100%	1,291	100%

Table 10: 8-to-9 Articulation (Where District 19 8th Graders Enrolled the Following Year)

	2019-20 to 2020-21		2023-24 to 2024-25	
	#	%	#	%
District 19 Schools	578	35%	610	43%
Other District Schools	934	57%	690	49%
D75 Schools	1	0%	1	0%
D79 Schools	1	0%	3	0%
Charter Schools	43	3%	28	2%
Non-Public Schools	11	1%	7	0%
Out of NYC	73	4%	55	4%
Other	8	0%	11	1%
Total	1,649	100%	1,405	100%

District 19 Students Remaining in District the Following Year



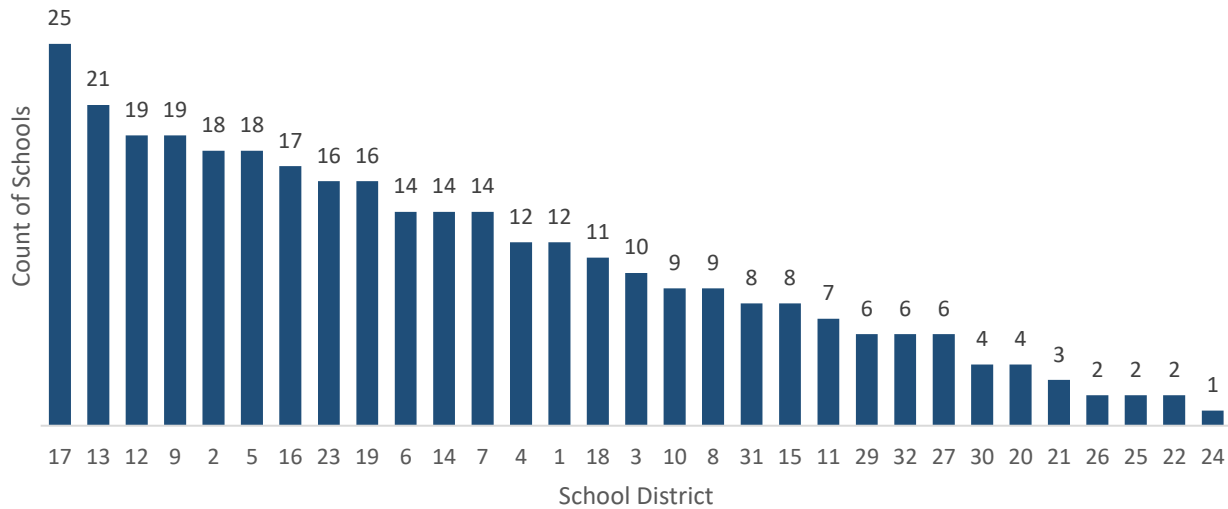
- Citywide, the average percent of graduating 5th graders who remain at a district school in the same district for 6th grade is 73%; for graduating 8th graders, the average percent of students who remain in the same district for 9th grade is 37%.

SCHOOL COUNTS BY ENROLLMENT RANGE

Table 11: District 19 School Counts by Enrollment Range

Enrollment Range	School Level							
	ECC	ES	MS	HS	K-8	6-12	K-12	Total
Less than 150	0	1	1	2	0	0	0	4
150-249	0	7	4	1	0	0	0	12
250-349	0	5	5	1	0	0	0	11
350-449	0	3	1	6	1	2	0	13
450-549	0	3	1	1	0	0	0	5
550+	0	3	0	2	0	1	0	6
<i>Total</i>	0	22	12	13	1	3	0	51

Number of Schools with Enrollment in Bottom 25% by School District - 2024-25



Source: Audited Register; includes district schools only; excludes pre-K centers and transfer schools.

ENROLLMENT VS. CAPACITY

Table 12: District 19 Enrollment vs. Capacity - Grades K-5

	Neighborhood(s)	Count of Schools	Enrollment	Capacity	Seat Excess / (Deficit)
District 19	N/A	23	7,726	11,246	3,520
Sub-District 1	Cypress Hills, East New York	6	2,439	2,976	537
Sub-District 2	East New York	12	4,044	6,142	2,098
Sub-District 3	East New York	5	1,243	2,128	885

Table 13: District 19 Enrollment vs. Capacity - Grades 6-8

	Neighborhood(s)	Count of Schools	Enrollment	Capacity	Seat Excess / (Deficit)
District 19	N/A	16	3,861	6,098	2,237
Sub-District 1	Cypress Hills, East New York	4	960	1,240	280
Sub-District 2	East New York	8	2,236	3,771	1,535
Sub-District 3	East New York	4	665	1,087	422

Source: Enrollment from 2024-25 Audited Register and grade-level capacity estimated from 2023-24 Blue Book; does not include new or planned capacity in 2024-25 and beyond.

BUILDING UTILIZATION

Each year, the SCA publishes the Blue Book, a report analyzing the capacity and enrollment for every NYCPS building across the city. "Under-Utilized Buildings" reflects the projected count of buildings that have at least 150 excess seats.

Table 14: Count of NYCPS Buildings by Utilization Status

	District 19	Brooklyn
Count of Buildings	47	489
Under-Utilized (UU) Buildings	25	196
150-299 Excess Seats	9	74
300+ Excess Seats	16	122
Over-Utilized Buildings	3	98

Source: Enrollment and capacity from 2023-24 Blue Book; UU status is from a preliminary 2024-25 UU analysis, and accounts for building enrollment and planning changes implemented in 2024-25 and after.

DISTRICT 75

NYCPS's District 75 provides specialized instructional support for students with significant challenges, such as Autism Spectrum Disorder (ASD), significant cognitive delays, emotional disability, sensory impairment, and multiple disabilities. District 75 serves students through a number of different program models.

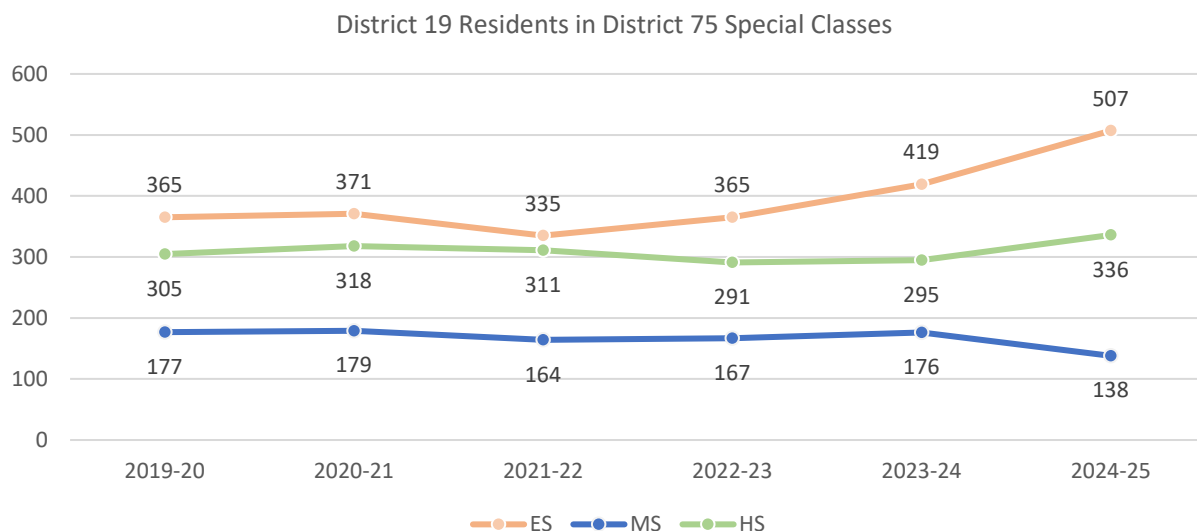
- Most District 75 students attend Special Class programs, which operate as distinct schools and may be located in standalone sites or co-located with district schools.
- A smaller number of students attend Inclusion Programs, in which students receive District 75 services within general education classes at a district school partner.

Table 15: District 75 Seat Need

	ES			MS			HS		
	District	Borough	City	District	Borough	City	District	Borough	City
Capacity	394	3,426	14,094	108	1,400	5,380	254	2,544	9,584
Residents	507	3,151	12,790	138	1,115	4,515	336	2,258	8,684
Deficit	-113	No Deficit	No Deficit	-30	No Deficit	No Deficit	-82	No Deficit	No Deficit

Table 16: District 75 Residential Growth

	2019-20	2020-21	2021-22	2022-23	2023-24	2024-25	5yr Change	1yr Change
ES	365	371	335	365	419	507	21%	39%
MS	177	179	164	167	176	138	-22%	-22%
HS	305	318	311	291	295	336	14%	10%
All Grades	847	868	810	823	890	981	10%	16%



Source: Audited Register

DISTRICT DEMOGRAPHICS

Table 17: Ethnicity

	K-5			6-8			9-12		
	District	Borough	City	District	Borough	City	District	Borough	City
% Asian	10%	17%	17%	6%	18%	17%	5%	17%	16%
% Hispanic	47%	30%	42%	47%	31%	44%	44%	32%	44%
% Black	39%	29%	22%	43%	32%	23%	44%	33%	24%
% White	2%	20%	15%	1%	17%	13%	2%	15%	12%
% Other	3%	4%	4%	3%	3%	3%	5%	3%	3%

Table 18: Special Populations

	K-5			6-8			9-12		
	District	Borough	City	District	Borough	City	District	Borough	City
Students with Disabilities	20%	20%	21%	22%	21%	21%	22%	18%	19%
English Language Learners	20%	21%	22%	15%	14%	15%	18%	14%	15%
Economically Disadvantaged	92%	76%	76%	92%	79%	77%	86%	78%	77%
Students in Temporary Housing	13%	10%	12%	14%	11%	12%	13%	10%	11%

Source: 2024-25 Audited Register; includes charter schools located in the district and may differ slightly from the NYCPS Demographic Snapshot.

SPECIAL PROGRAMS

Table 19: District 19 Special Program Summary

	District 19	Brooklyn
Schools with ASD Programs	2	46
Horizon	2	19
Nest	0	28
Schools with G&T Programs	3	43
Schools with Bilingual Ed Programs	12	115
Dual Language (DL)	6	72
Transitional Bilingual Education (TBE)	1	10
DL/TBE	5	33

Note: Schools with both Horizon and Nest programs are counted once in the top row but separately in the Horizon and Nest rows beneath.

