

District 23

Data Summary

2026-2027 Strategic Planning Data Considerations

Contents

Citywide Enrollment	I
District Enrollment	2
Residential Population and District Retention	3
District ES and MS Enrollment Model ("In-Out Model")	5
Articulation Trends	6
School Counts by Enrollment Range	7
Enrollment vs. Capacity	8
Building Utilization	8
District 75	9
District Demographics	10
Special Programs	10

CITYWIDE ENROLLMENT (DISTRICT AND CHARTER), 2015-16 TO 2024-25

New York City Public Schools (NYCPS) is committed to thoughtful collaboration with districts and communities to collectively strengthen schools, support students and families, and respond to demographic and population changes in New York City.



Source: Audited Register and Charter Headcount; includes district and charter school enrollment only

- Enrollment in D1-32 schools decreased slightly in 2024-2025, remaining approximately stable compared to the steeper declines following the onset of the COVID-19 pandemic.
- Citywide, K-12 enrollment in District 1-32 schools and charter schools has declined by about 10% since its peak in the 2016-2017 school year.

DISTRICT ENROLLMENT

District 23 Enrollment by Grade Level and Year (District Schools Only)

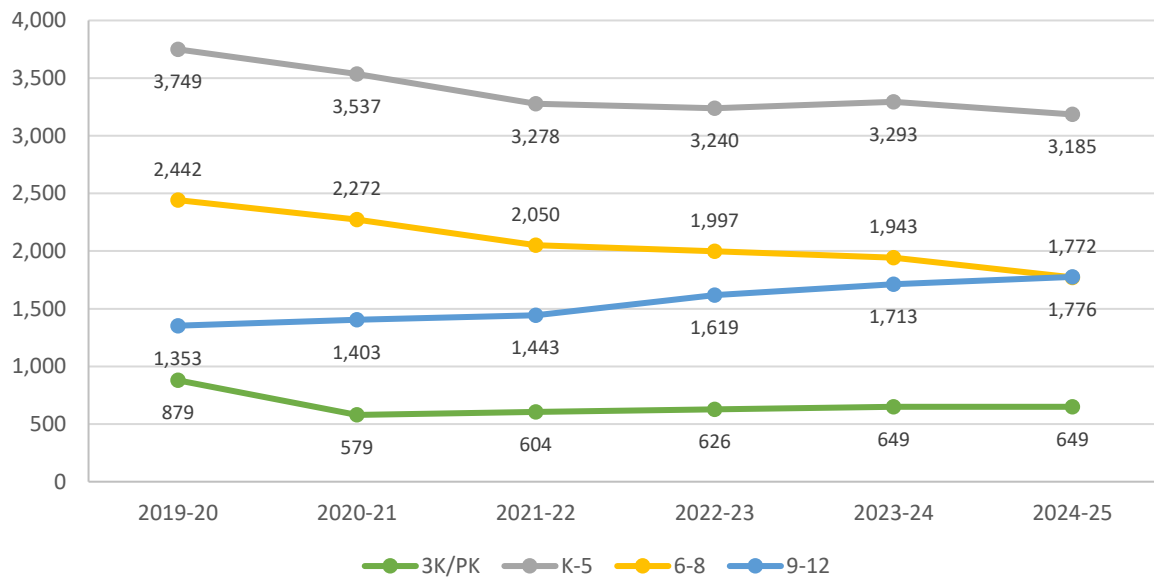


Table 1: District 23 Enrollment - 2019-20 to 2024-25

	2019-20	2020-21	2021-22	2022-23	2023-24	2024-25	1yr Change	5yr Change
3K	380	174	210	241	229	257	12%	-32%
PK	499	405	394	385	420	392	-7%	-21%
K-5	3,749	3,537	3,278	3,240	3,293	3,185	-3%	-15%
6-8	2,442	2,272	2,050	1,997	1,943	1,772	-9%	-27%
9-12	1,353	1,403	1,443	1,619	1,713	1,776	4%	31%
Total	8,423	7,791	7,375	7,482	7,598	7,382	-3%	-12%
% Change YoY		-7.5%	-5.3%	1.5%	1.6%	-2.8%		

Table 2: District 23 Entry Grade Enrollment - 2019-20 to 2024-25

	2019-20	2020-21	2021-22	2022-23	2023-24	2024-25	1yr Change	5yr Change
K	597	567	523	530	530	513	-3.2%	-14%
6	764	705	657	630	640	528	-17.5%	-31%
9	366	388	463	420	466	466	0.0%	27%

Source: Audited Register; includes enrollment in district schools only

RESIDENTIAL POPULATION AND DISTRICT RETENTION

District 23 K-12 Enrollment vs. Residential Population

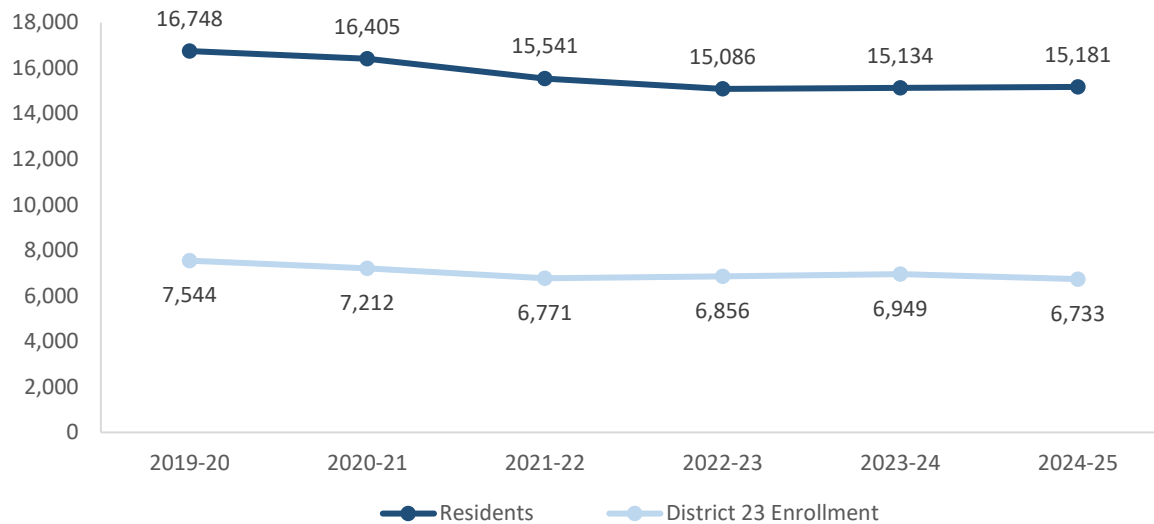


Table 3: District 23 Student Residential Population - 2019-20 to 2024-25

	2019-20	2020-21	2021-22	2022-23	2023-24	2024-25	1yr Change	5yr Change
K-5	7,359	6,960	6,601	6,277	6,313	6,377	1%	-13%
6-8	3,985	3,989	3,678	3,626	3,553	3,480	-2%	-13%
9-12	5,404	5,456	5,262	5,183	5,268	5,324	1%	-1%
Total	16,748	16,405	15,541	15,086	15,134	15,181	0%	-9%
% Change YoY		-2.0%	-5.3%	-2.9%	0.3%	0.3%		

- Between 2019-20 and 2024-25, the K-5 residential population in District 23 declined by 13%.
- During this time, the 6-8 residential population in District 23 declined by 13%.
- Citywide, the K-12 residential population declined by 8% since 2019-20.

Source: Residential population is the sum of students attending any NYCPS school, charter or non-public school; as such, this metric will not capture students who are home schooled, have dropped out, or are otherwise not enrolled in these school options.

Table 4: Elementary School District Retention (Where District 23 Residents Enroll in School)

	2019-20	2020-21	2021-22	2022-23	2023-24	2024-25	% of Residents	
							2019-20	2024-25
District 23 Schools	3,020	2,796	2,606	2,565	2,548	2,420	41%	38%
Other District Schools	1,357	1,255	1,167	1,083	1,137	1,283	18%	20%
Charter Schools	2,594	2,550	2,466	2,265	2,240	2,271	35%	36%
Non-Public Schools	171	171	179	175	168	169	2%	3%
Other	217	188	183	189	220	234	3%	4%
Total	7,359	6,960	6,601	6,277	6,313	6,377	100%	100%
% Change YoY		-5.4%	-5.2%	-4.9%	0.6%	1.0%		

Table 5: Middle School District Retention (Where District 23 Residents Enroll in School)

	2019-20	2020-21	2021-22	2022-23	2023-24	2024-25	% of Residents	
							2019-20	2024-25
District 23 Schools	1,558	1,529	1,412	1,373	1,340	1,188	39%	34%
Other District Schools	889	828	747	753	735	758	22%	22%
Charter Schools	1,314	1,396	1,300	1,258	1,242	1,290	33%	37%
Non-Public Schools	105	112	98	121	94	96	3%	3%
Other	119	124	121	121	142	148	3%	4%
Total	3,985	3,989	3,678	3,626	3,553	3,480	100%	100%
% Change YoY		0.1%	-7.8%	-1.4%	-2.0%	-2.1%		

Table 6: Where District 23 Students Live - Grades K-5

	K-5		% of Students	
	2019-20	2024-25	2019-20	2024-25
District 23	3,020	2,420	81%	76%
Other District	729	765	19%	24%
	3,749	3,185	100%	100%

Table 7: Where District 23 Students Live - Grades 6-8

	6-8		% of Students	
	2019-20	2024-25	2019-20	2024-25
District 23	1,558	1,188	64%	67%
Other District	884	584	36%	33%
	2,442	1,772	100%	100%

Citywide Trends

- Citywide, the average **District Retention Rate** (the percent of students living in a district who enroll in a district school in that district) is 54% for ES and 49% for MS.
- Citywide, the average **District Enrollment Rate** (the percent of students enrolled in district schools who live in that district) is 83% for ES and 79% for MS.

Source: Audited Register for NYCPS and charter schools; NYCPS administrative data for non-public schools

DISTRICT ES AND MS ENROLLMENT MODEL ("IN-OUT MODEL")

The table below depicts the prevailing trends for students coming into the district ("IN") and leaving the district ("OUT") to help identify the primary drivers of district school enrollment change.

Table 8: In-Out Model - ES and MS

	ES			MS		
	2019-20	2024-25	% Chg	2019-20	2024-25	% Chg
Residents of District 23	7,359	6,377	-13%	3,985	3,480	-13%
- OUT to other districts	-1,357	-1,283	-5%	-889	-758	-15%
- OUT to D75/D79	-217	-234	8%	-119	-148	24%
- OUT to charters	-2,594	-2,271	-12%	-1,314	-1,290	-2%
- OUT to Non-Public Schools	-171	-169	-1%	-105	-96	-9%
Total OUT	-4,339	-3,957	-9%	-2,427	-2,292	-6%
+ IN from other districts	+729	+765	5%	+884	+584	-34%
D23 Enrollment	3,749	3,185	-15%	2,442	1,772	-27%

Source: Audited Register for NYCPS and charter schools; NYCPS administrative data for non-public schools

Students Leaving the District:

- At the elementary school level, the largest number of students leaving District 23 enroll in charter schools. Since 2019-20, this number has decreased by 12%, as compared to the overall number of elementary school-aged residents, which has decreased by 13%.
- At the middle school level, the largest number of students leaving District 23 enroll in charter schools. Since 2019-20, this number has remained about the same, as compared to the overall number of middle school-aged residents, which has decreased by 13%.

Students Coming into the District:

- At the elementary school level, a smaller number of students living in other districts come into District 23 schools (765) than District 23 residents who leave for other district schools (1,283).
- At the middle school level, a smaller number of students living in other districts come into District 23 schools (584) than District 23 residents who leave for other district schools (758).

ARTICULATION TRENDS

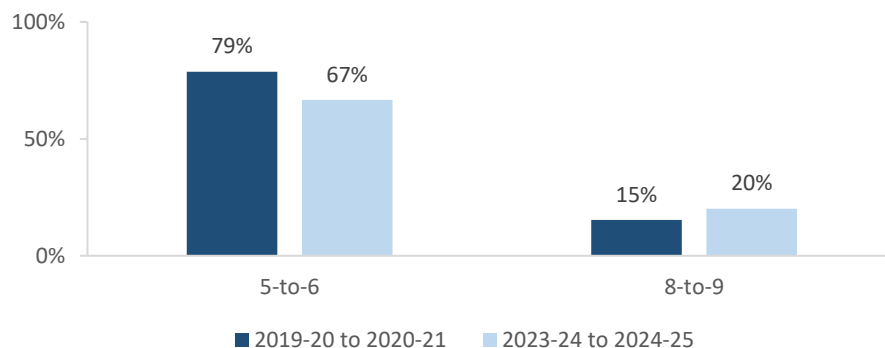
Table 9: 5-to-6 Articulation (Where District 23 5th Graders Enrolled the Following Year)

	2019-20 to 2020-21		2023-24 to 2024-25	
	#	%	#	%
District 23 Schools	514	79%	353	67%
Other District Schools	74	11%	97	18%
D75 Schools	1	0%	0	0%
D79 Schools	0	0%	0	0%
Charter Schools	41	6%	43	8%
Non-Public Schools	3	0%	4	1%
Out of NYC	16	2%	30	6%
Other	4	1%	3	1%
Total	653	100%	530	100%

Table 10: 8-to-9 Articulation (Where District 23 8th Graders Enrolled the Following Year)

	2019-20 to 2020-21		2023-24 to 2024-25	
	#	%	#	%
District 23 Schools	128	15%	135	20%
Other District Schools	632	76%	455	68%
D75 Schools	2	0%	2	0%
D79 Schools	1	0%	1	0%
Charter Schools	31	4%	34	5%
Non-Public Schools	3	0%	16	2%
Out of NYC	32	4%	25	4%
Other	8	1%	4	1%
Total	837	100%	672	100%

District 23 Students Remaining in District the Following Year



- Citywide, the average percent of graduating 5th graders who remain at a district school in the same district for 6th grade is 73%; for graduating 8th graders, the average percent of students who remain in the same district for 9th grade is 37%.

SCHOOL COUNTS BY ENROLLMENT RANGE

Table 11: District 23 School Counts by Enrollment Range

Enrollment Range	School Level							
	ECC	ES	MS	HS	K-8	6-12	K-12	Total
Less than 150	0	2	3	0	0	0	0	5
150-249	0	6	2	3	0	0	0	11
250-349	0	3	2	1	2	0	0	8
350-449	0	1	0	0	1	0	0	2
450-549	0	0	0	1	0	0	0	1
550+	0	0	0	0	0	1	0	1
<i>Total</i>	0	12	7	5	3	1	0	28

Number of Schools with Enrollment in Bottom 25% by School District - 2024-25



Source: Audited Register; includes district schools only; excludes pre-K centers and transfer schools.

ENROLLMENT VS. CAPACITY

Table 12: District 23 Enrollment vs. Capacity - Grades K-5

	Neighborhood(s)	Count of Schools	Enrollment	Capacity	Seat Excess / (Deficit)
District 23	N/A	15	3,185	5,437	2,252
Sub-District 1	Brownsville	11	2,388	4,052	1,664
Sub-District 2	Brownsville	4	797	1,385	588

Table 13: District 23 Enrollment vs. Capacity - Grades 6-8

	Neighborhood(s)	Count of Schools	Enrollment	Capacity	Seat Excess / (Deficit)
District 23	N/A	11	1,772	3,238	1,466
Sub-District 1	Brownsville	7	1,205	2,241	1,036
Sub-District 2	Brownsville	4	567	997	430

Source: Enrollment from 2024-25 Audited Register and grade-level capacity estimated from 2023-24 Blue Book; does not include new or planned capacity in 2024-25 and beyond.

BUILDING UTILIZATION

Each year, the SCA publishes the Blue Book, a report analyzing the capacity and enrollment for every NYCPS building across the city. "Under-Utilized Buildings" reflects the projected count of buildings that have at least 150 excess seats.

Table 14: Count of NYCPS Buildings by Utilization Status

	District 23	Brooklyn
Count of Buildings	23	489
Under-Utilized (UU) Buildings	17	196
150-299 Excess Seats	9	74
300+ Excess Seats	8	122
Over-Utilized Buildings	2	98

Source: Enrollment and capacity from 2023-24 Blue Book; UU status is from a preliminary 2024-25 UU analysis, and accounts for building enrollment and planning changes implemented in 2024-25 and after.

DISTRICT 75

NYCPS's District 75 provides specialized instructional support for students with significant challenges, such as Autism Spectrum Disorder (ASD), significant cognitive delays, emotional disability, sensory impairment, and multiple disabilities. District 75 serves students through a number of different program models.

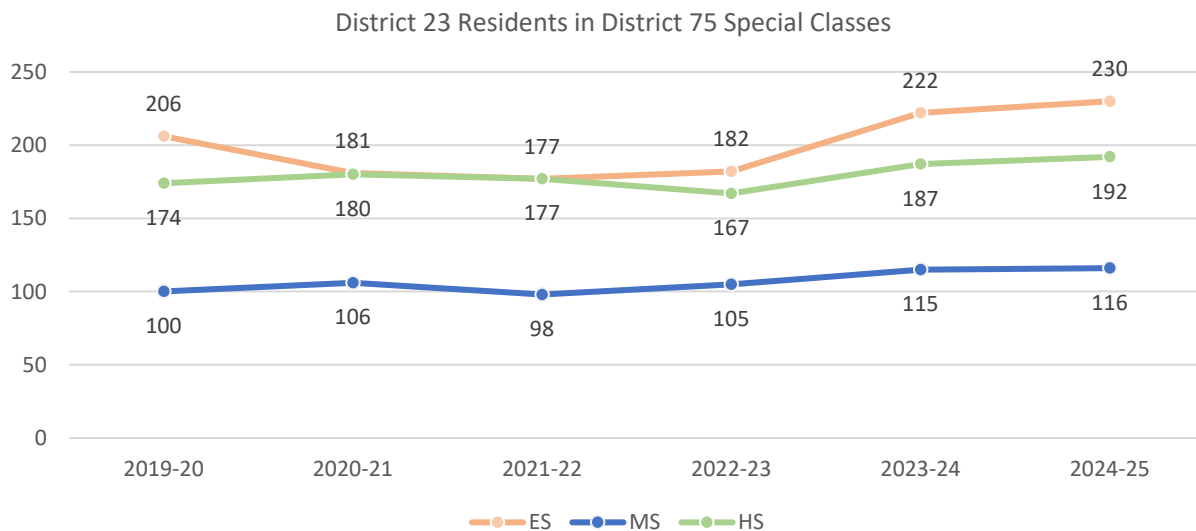
- Most District 75 students attend Special Class programs, which operate as distinct schools and may be located in standalone sites or co-located with district schools.
- A smaller number of students attend Inclusion Programs, in which students receive District 75 services within general education classes at a district school partner.

Table 15: District 75 Seat Need

	ES			MS			HS		
	District	Borough	City	District	Borough	City	District	Borough	City
Capacity	320	3,426	14,094	130	1,400	5,380	0	2,544	9,584
Residents	230	3,151	12,790	116	1,115	4,515	192	2,258	8,684
Deficit	No Deficit	No Deficit	No Deficit	No Deficit	No Deficit	No Deficit	-192	No Deficit	No Deficit

Table 16: District 75 Residential Growth

	2019-20	2020-21	2021-22	2022-23	2023-24	2024-25	5yr Change	1yr Change
ES	206	181	177	182	222	230	4%	12%
MS	100	106	98	105	115	116	1%	16%
HS	174	180	177	167	187	192	3%	10%
All Grades	480	467	452	454	524	538	3%	12%



Source: Audited Register

DISTRICT DEMOGRAPHICS

Table 17: Ethnicity

	K-5			6-8			9-12		
	District	Borough	City	District	Borough	City	District	Borough	City
% Asian	1%	17%	17%	1%	18%	17%	1%	17%	16%
% Hispanic	28%	30%	42%	24%	31%	44%	21%	32%	44%
% Black	67%	29%	22%	71%	32%	23%	72%	33%	24%
% White	1%	20%	15%	1%	17%	13%	1.0%	15%	12%
% Other	3%	4%	4%	2%	3%	3%	5%	3%	3%

Table 18: Special Populations

	K-5			6-8			9-12		
	District	Borough	City	District	Borough	City	District	Borough	City
Students with Disabilities	21%	20%	21%	25%	21%	21%	27%	18%	19%
English Language Learners	11%	21%	22%	8%	14%	15%	9%	14%	15%
Economically Disadvantaged	93%	76%	76%	90%	79%	77%	89%	78%	77%
Students in Temporary Housing	19%	10%	12%	18%	11%	12%	15%	10%	11%

Source: 2024-25 Audited Register; includes charter schools located in the district and may differ slightly from the NYCPS Demographic Snapshot.

SPECIAL PROGRAMS

Table 19: District 23 Special Program Summary

	District 23	Brooklyn
Schools with ASD Programs	1	46
<i>Horizon</i>	0	19
<i>Nest</i>	1	28
Schools with G&T Programs	3	43
Schools with Bilingual Ed Programs	2	115
<i>Dual Language (DL)</i>	2	72
<i>Transitional Bilingual Education (TBE)</i>	0	10
<i>DL/TBE</i>	0	33

Note: Schools with both *Horizon* and *Nest* programs are counted once in the top row but separately in the *Horizon* and *Nest* rows beneath.

