

District 25

Data Summary

2026-2027 Strategic Planning Data Considerations

Contents

Citywide Enrollment	I
District Enrollment	2
Residential Population and District Retention	3
District ES and MS Enrollment Model ("In-Out Model")	5
Articulation Trends	6
School Counts by Enrollment Range	7
Enrollment vs. Capacity	8
Building Utilization	8
District 75	9
District Demographics	10
Special Programs	10

CITYWIDE ENROLLMENT (DISTRICT AND CHARTER), 2015-16 TO 2024-25

New York City Public Schools (NYCPS) is committed to thoughtful collaboration with districts and communities to collectively strengthen schools, support students and families, and respond to demographic and population changes in New York City.



Source: Audited Register and Charter Headcount; includes district and charter school enrollment only

- Enrollment in D1-32 schools decreased slightly in 2024-2025, remaining approximately stable compared to the steeper declines following the onset of the COVID-19 pandemic.
- Citywide, K-12 enrollment in District 1-32 schools and charter schools has declined by about 10% since its peak in the 2016-2017 school year.

DISTRICT ENROLLMENT

District 25 Enrollment by Grade Level and Year (District Schools Only)

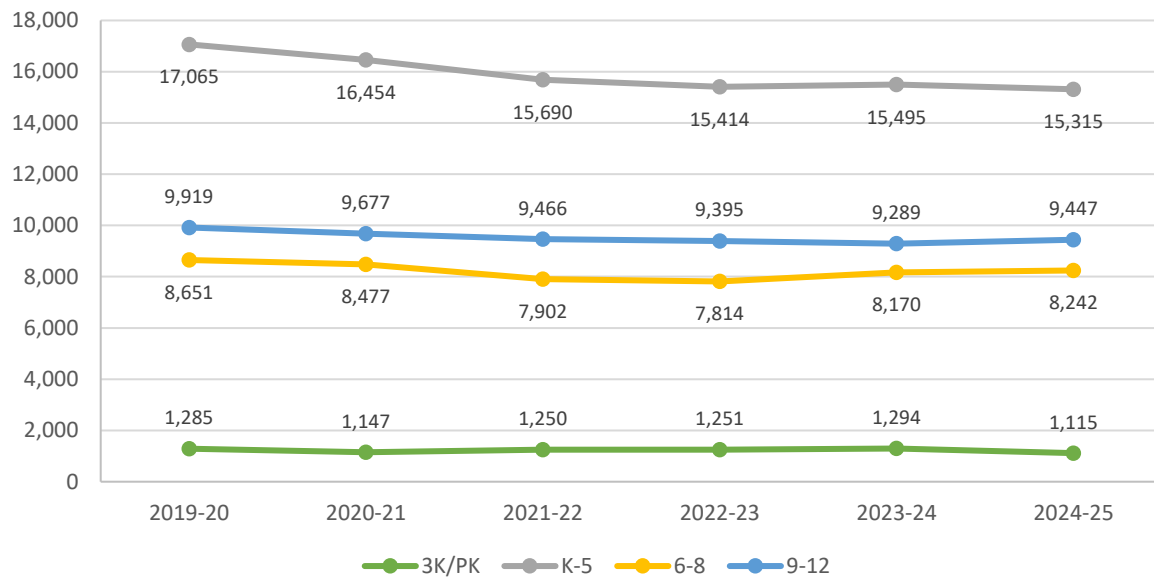


Table 1: District 25 Enrollment - 2019-20 to 2024-25

	2019-20	2020-21	2021-22	2022-23	2023-24	2024-25	1yr Change	5yr Change
3K	-	2	135	191	228	218	-4%	-
PK	1,285	1,145	1,115	1,060	1,066	897	-16%	-30%
K-5	17,065	16,454	15,690	15,414	15,495	15,315	-1%	-10%
6-8	8,651	8,477	7,902	7,814	8,170	8,242	1%	-5%
9-12	9,919	9,677	9,466	9,395	9,289	9,447	2%	-5%
Total	36,920	35,755	34,308	33,874	34,248	34,119	0%	-8%
% Change YoY		-3.2%	-4.0%	-1.3%	1.1%	-0.4%		

Table 2: District 25 Entry Grade Enrollment - 2019-20 to 2024-25

	2019-20	2020-21	2021-22	2022-23	2023-24	2024-25	1yr Change	5yr Change
K	2,858	2,683	2,617	2,480	2,463	2,457	-0.2%	-14%
6	2,872	2,780	2,561	2,655	2,799	2,660	-5.0%	-7%
9	2,819	2,465	2,617	2,694	2,429	2,623	8.0%	-7%

Source: Audited Register; includes enrollment in district schools only

RESIDENTIAL POPULATION AND DISTRICT RETENTION

District 25 K-12 Enrollment vs. Residential Population

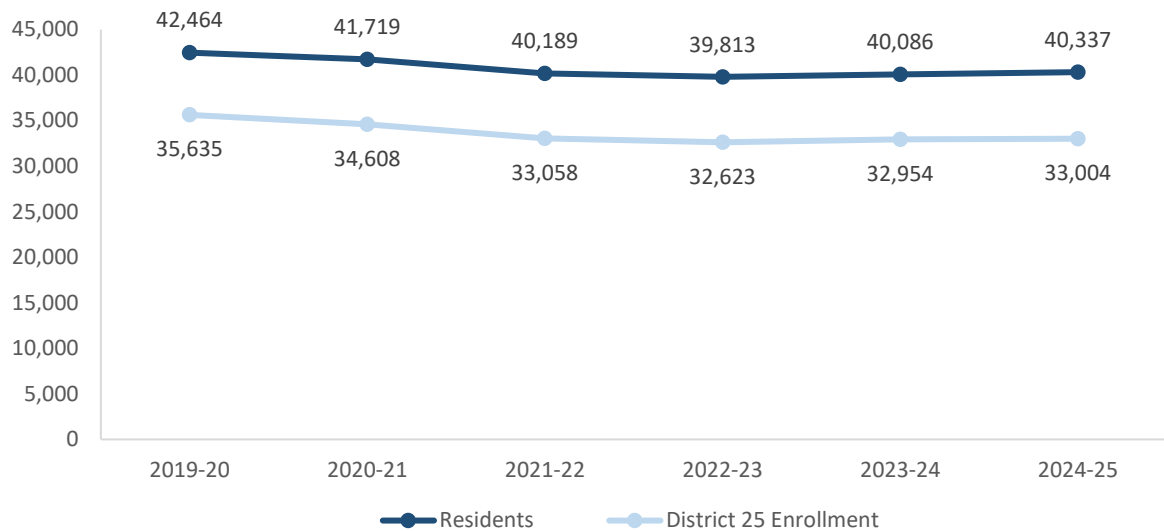


Table 3: District 25 Student Residential Population - 2019-20 to 2024-25

	2019-20	2020-21	2021-22	2022-23	2023-24	2024-25	1yr Change	5yr Change
K-5	19,696	19,208	18,418	18,151	18,082	18,068	0%	-8%
6-8	9,698	9,508	8,934	8,802	9,098	9,178	1%	-5%
9-12	13,070	13,003	12,837	12,860	12,906	13,091	1%	0%
Total	42,464	41,719	40,189	39,813	40,086	40,337	1%	-5%
% Change YoY		-1.8%	-3.7%	-0.9%	0.7%	0.6%		

- Between 2019-20 and 2024-25, the K-5 residential population in District 25 declined by 8%.
- During this time, the 6-8 residential population in District 25 declined by 5%.
- Citywide, the K-12 residential population declined by 8% since 2019-20.

Source: Residential population is the sum of students attending any NYCPS school, charter or non-public school; as such, this metric will not capture students who are home schooled, have dropped out, or are otherwise not enrolled in these school options.

Table 4: Elementary School District Retention (Where District 25 Residents Enroll in School)

	2019-20	2020-21	2021-22	2022-23	2023-24	2024-25	% of Residents	
							2019-20	2024-25
District 25 Schools	16,193	15,561	14,856	14,592	14,608	14,417	82%	80%
Other District Schools	421	471	440	467	534	620	2%	3%
Charter Schools	97	120	136	135	161	180	0%	1%
Non-Public Schools	2,684	2,726	2,652	2,558	2,361	2,425	14%	13%
Other	301	330	334	399	418	426	2%	2%
Total	19,696	19,208	18,418	18,151	18,082	18,068	100%	100%
% Change YoY		-2.5%	-4.1%	-1.4%	-0.4%	-0.1%		

Table 5: Middle School District Retention (Where District 25 Residents Enroll in School)

	2019-20	2020-21	2021-22	2022-23	2023-24	2024-25	% of Residents	
							2019-20	2024-25
District 25 Schools	7,790	7,622	7,053	7,027	7,329	7,380	80%	80%
Other District Schools	388	338	350	321	330	380	4%	4%
Charter Schools	38	53	48	46	63	75	0%	1%
Non-Public Schools	1,370	1,387	1,366	1,295	1,260	1,222	14%	13%
Other	112	108	117	113	116	121	1%	1%
Total	9,698	9,508	8,934	8,802	9,098	9,178	100%	100%
% Change YoY		-2.0%	-6.0%	-1.5%	3.4%	0.9%		

Table 6: Where District 25 Students Live - Grades K-5

	K-5		% of Students	
	2019-20	2024-25	2019-20	2024-25
District 25	16,193	14,417	95%	94%
Other District	872	898	5%	6%
	17,065	15,315	100%	100%

Table 7: Where District 25 Students Live - Grades 6-8

	6-8		% of Students	
	2019-20	2024-25	2019-20	2024-25
District 25	7,790	7,380	90%	90%
Other District	861	862	10%	10%
	8,651	8,242	100%	100%

Citywide Trends

- Citywide, the average **District Retention Rate** (the percent of students living in a district who enroll in a district school in that district) is 54% for ES and 49% for MS.
- Citywide, the average **District Enrollment Rate** (the percent of students enrolled in district schools who live in that district) is 83% for ES and 79% for MS.

Source: Audited Register for NYCPS and charter schools; NYCPS administrative data for non-public schools

DISTRICT ES AND MS ENROLLMENT MODEL ("IN-OUT MODEL")

The table below depicts the prevailing trends for students coming into the district ("IN") and leaving the district ("OUT") to help identify the primary drivers of district school enrollment change.

Table 8: In-Out Model - ES and MS

	ES			MS		
	2019-20	2024-25	% Chg	2019-20	2024-25	% Chg
Residents of District 25	19,696	18,068	-8%	9,698	9,178	-5%
- OUT to other districts	-421	-620	47%	-388	-380	-2%
- OUT to D75/D79	-301	-426	42%	-112	-121	8%
- OUT to charters	-97	-180	86%	-38	-75	97%
- OUT to Non-Public Schools	-2,684	-2,425	-10%	-1,370	-1,222	-11%
Total OUT	-3,503	-3,651	4%	-1,908	-1,798	-6%
+ IN from other districts	+872	+898	3%	+861	+862	0%
D25 Enrollment	17,065	15,315	-10%	8,651	8,242	-5%

Source: Audited Register for NYCPS and charter schools; NYCPS administrative data for non-public schools

Students Leaving the District:

- At the elementary school level, the largest number of students leaving District 25 enroll in non-public schools. Since 2019-20, this number has decreased by 10%, as compared to the overall number of elementary school-aged residents, which has decreased by 8%.
- At the middle school level, the largest number of students leaving District 25 enroll in non-public schools. Since 2019-20, this number has decreased by 11%, as compared to the overall number of middle school-aged residents, which has decreased by 5%.

Students Coming into the District:

- At the elementary school level, a greater number of students living in other districts come into District 25 schools (898) than District 25 residents who leave for other district schools (620).
- At the middle school level, a greater number of students living in other districts come into District 25 schools (862) than District 25 residents who leave for other district schools (380).

ARTICULATION TRENDS

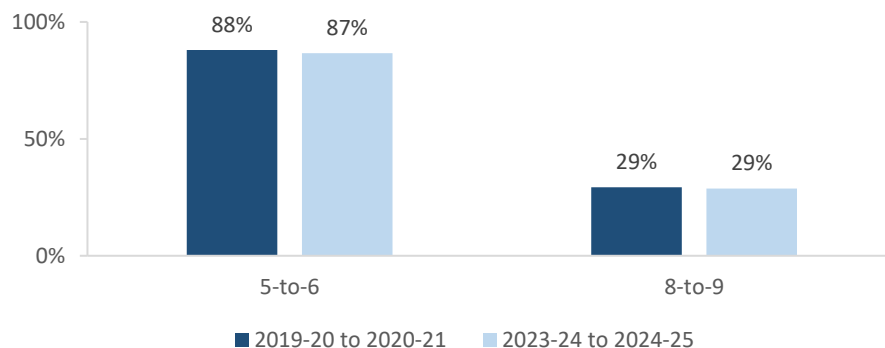
Table 9: 5-to-6 Articulation (Where District 25 5th Graders Enrolled the Following Year)

	2019-20 to 2020-21		2023-24 to 2024-25	
	#	%	#	%
District 25 Schools	2,466	88%	2,249	87%
Other District Schools	132	5%	144	6%
D75 Schools	0	0%	0	0%
D79 Schools	0	0%	0	0%
Charter Schools	5	0%	9	0%
Non-Public Schools	39	1%	31	1%
Out of NYC	128	5%	139	5%
Other	31	1%	25	1%
Total	2,801	100%	2,597	100%

Table 10: 8-to-9 Articulation (Where District 25 8th Graders Enrolled the Following Year)

	2019-20 to 2020-21		2023-24 to 2024-25	
	#	%	#	%
District 25 Schools	830	29%	771	29%
Other District Schools	1,680	59%	1,569	59%
D75 Schools	1	0%	1	0%
D79 Schools	0	0%	0	0%
Charter Schools	3	0%	7	0%
Non-Public Schools	160	6%	177	7%
Out of NYC	104	4%	147	5%
Other	49	2%	7	0%
Total	2,827	100%	2,679	100%

District 25 Students Remaining in District the Following Year



- Citywide, the average percent of graduating 5th graders who remain at a district school in the same district for 6th grade is 73%; for graduating 8th graders, the average percent of students who remain in the same district for 9th grade is 37%.

SCHOOL COUNTS BY ENROLLMENT RANGE

Table 11: District 25 School Counts by Enrollment Range

Enrollment Range	School Level							
	ECC	ES	MS	HS	K-8	6-12	K-12	Total
Less than 150	0	0	0	1	0	0	0	1
150-249	0	0	0	0	0	0	0	0
250-349	1	3	1	0	0	0	0	5
350-449	1	3	2	3	0	0	0	9
450-549	0	2	0	0	3	0	0	5
550+	0	12	5	5	1	3	0	26
<i>Total</i>	2	20	8	9	4	3	0	46

Number of Schools with Enrollment in Bottom 25% by School District - 2024-25



Source: Audited Register; includes district schools only; excludes pre-K centers and transfer schools.

ENROLLMENT VS. CAPACITY

Table 12: District 25 Enrollment vs. Capacity - Grades K-5

	Neighborhood(s)	Count of Schools	Enrollment	Capacity	Seat Excess / (Deficit)
District 25	N/A	26	15,315	13,912	(1,403)
Sub-District 1	College Point, Whitestone	12	7,315	6,036	(1,279)
Sub-District 2	Flushing, Murray Hill, Willets	7	5,421	5,102	(319)
Sub-District 3	Kew Gardens Hills	7	2,579	2,774	195

Table 13: District 25 Enrollment vs. Capacity - Grades 6-8

	Neighborhood(s)	Count of Schools	Enrollment	Capacity	Seat Excess / (Deficit)
District 25	N/A	15	8,242	8,042	(200)
Sub-District 1	College Point, Whitestone	6	4,658	4,428	(230)
Sub-District 2	Flushing, Murray Hill, Willets	3	2,244	2,225	(19)
Sub-District 3	Kew Gardens Hills	6	1,340	1,389	49

Source: Enrollment from 2024-25 Audited Register and grade-level capacity estimated from 2023-24 Blue Book; does not include new or planned capacity in 2024-25 and beyond.

BUILDING UTILIZATION

Each year, the SCA publishes the Blue Book, a report analyzing the capacity and enrollment for every NYCPS building across the city. "Under-Utilized Buildings" reflects the projected count of buildings that have at least 150 excess seats.

Table 14: Count of NYCPS Buildings by Utilization Status

	District 25	Queens
Count of Buildings	44	405
Under-Utilized (UU) Buildings	7	84
150-299 Excess Seats	6	46
300+ Excess Seats	1	38
Over-Utilized Buildings	26	148

Source: Enrollment and capacity from 2023-24 Blue Book; UU status is from a preliminary 2024-25 UU analysis, and accounts for building enrollment and planning changes implemented in 2024-25 and after.

DISTRICT 75

NYCPS's District 75 provides specialized instructional support for students with significant challenges, such as Autism Spectrum Disorder (ASD), significant cognitive delays, emotional disability, sensory impairment, and multiple disabilities. District 75 serves students through a number of different program models.

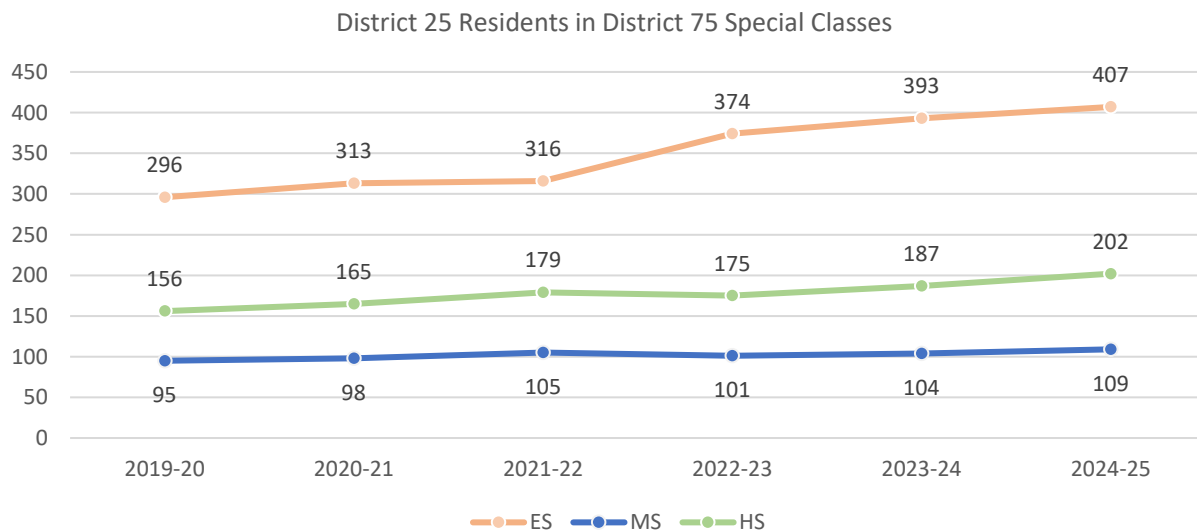
- Most District 75 students attend Special Class programs, which operate as distinct schools and may be located in standalone sites or co-located with district schools.
- A smaller number of students attend Inclusion Programs, in which students receive District 75 services within general education classes at a district school partner.

Table 15: District 75 Seat Need

	ES			MS			HS		
	District	Borough	City	District	Borough	City	District	Borough	City
Capacity	234	4,172	14,094	114	1,412	5,380	28	2,426	9,584
Residents	407	3,786	12,790	109	1,231	4,515	202	2,286	8,684
Deficit	-173	No Deficit	No Deficit	No Deficit	No Deficit	No Deficit	-174	No Deficit	No Deficit

Table 16: District 75 Residential Growth

	2019-20	2020-21	2021-22	2022-23	2023-24	2024-25	5yr Change	1yr Change
ES	296	313	316	374	393	407	4%	38%
MS	95	98	105	101	104	109	5%	15%
HS	156	165	179	175	187	202	8%	29%
All Grades	547	576	600	650	684	718	5%	31%



Source: Audited Register

DISTRICT DEMOGRAPHICS

Table 17: Ethnicity

	K-5			6-8			9-12		
	District	Borough	City	District	Borough	City	District	Borough	City
% Asian	54%	28%	17%	51%	28%	17%	31%	26%	16%
% Hispanic	31%	42%	42%	33%	43%	44%	49%	44%	44%
% Black	3%	15%	22%	4%	15%	23%	9%	17%	24%
% White	9%	11%	15%	10%	10%	13%	7%	9%	12%
% Other	2%	5%	4%	2%	4%	3%	4%	4%	3%

Table 18: Special Populations

	K-5			6-8			9-12		
	District	Borough	City	District	Borough	City	District	Borough	City
Students with Disabilities	17%	19%	21%	17%	18%	21%	16%	16%	19%
English Language Learners	32%	26%	22%	19%	17%	15%	25%	17%	15%
Economically Disadvantaged	74%	74%	76%	71%	74%	77%	74%	76%	77%
Students in Temporary Housing	6%	12%	12%	7%	12%	12%	11%	10%	11%

Source: 2024-25 Audited Register; includes charter schools located in the district and may differ slightly from the NYCPS Demographic Snapshot.

SPECIAL PROGRAMS

Table 19: District 25 Special Program Summary

	District 25	Queens
Schools with ASD Programs	4	30
<i>Horizon</i>	1	15
<i>Nest</i>	4	18
Schools with G&T Programs	6	39
Schools with Bilingual Ed Programs	18	86
<i>Dual Language (DL)</i>	3	35
<i>Transitional Bilingual Education (TBE)</i>	3	20
<i>DL/TBE</i>	12	31

Note: Schools with both *Horizon* and *Nest* programs are counted once in the top row but separately in the *Horizon* and *Nest* rows beneath.

