

District 26

Data Summary

2026-2027 Strategic Planning Data Considerations

Contents

Citywide Enrollment	I
District Enrollment	2
Residential Population and District Retention	3
District ES and MS Enrollment Model ("In-Out Model")	5
Articulation Trends	6
School Counts by Enrollment Range	7
Enrollment vs. Capacity	8
Building Utilization	8
District 75	9
District Demographics	10
Special Programs	10

CITYWIDE ENROLLMENT (DISTRICT AND CHARTER), 2015-16 TO 2024-25

New York City Public Schools (NYCPS) is committed to thoughtful collaboration with districts and communities to collectively strengthen schools, support students and families, and respond to demographic and population changes in New York City.



Source: Audited Register and Charter Headcount; includes district and charter school enrollment only

- Enrollment in D1-32 schools decreased slightly in 2024-2025, remaining approximately stable compared to the steeper declines following the onset of the COVID-19 pandemic.
- Citywide, K-12 enrollment in District 1-32 schools and charter schools has declined by about 10% since its peak in the 2016-2017 school year.

DISTRICT ENROLLMENT

District 26 Enrollment by Grade Level and Year (District Schools Only)

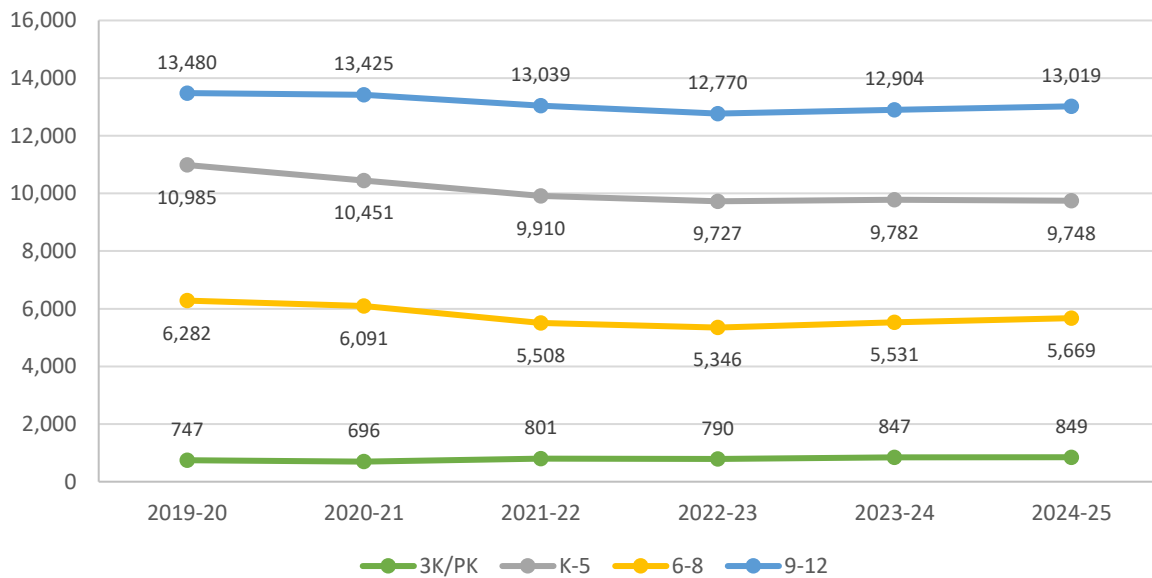


Table 1: District 26 Enrollment - 2019-20 to 2024-25

	2019-20	2020-21	2021-22	2022-23	2023-24	2024-25	1yr Change	5yr Change
3K	-	-	87	101	130	184	42%	-
PK	747	696	714	689	717	665	-7%	-11%
K-5	10,985	10,451	9,910	9,727	9,782	9,748	0%	-11%
6-8	6,282	6,091	5,508	5,346	5,531	5,669	2%	-10%
9-12	13,480	13,425	13,039	12,770	12,904	13,019	1%	-3%
Total	31,494	30,663	29,258	28,633	29,064	29,285	1%	-7%
% Change YoY		-2.6%	-4.6%	-2.1%	1.5%	0.8%		

Table 2: District 26 Entry Grade Enrollment - 2019-20 to 2024-25

	2019-20	2020-21	2021-22	2022-23	2023-24	2024-25	1yr Change	5yr Change
K	1,788	1,670	1,624	1,519	1,549	1,600	3.3%	-11%
6	2,067	1,927	1,760	1,790	1,882	1,876	-0.3%	-9%
9	4,067	3,898	3,684	3,414	3,652	3,735	2.3%	-8%

Source: Audited Register; includes enrollment in district schools only

RESIDENTIAL POPULATION AND DISTRICT RETENTION

District 26 K-12 Enrollment vs. Residential Population

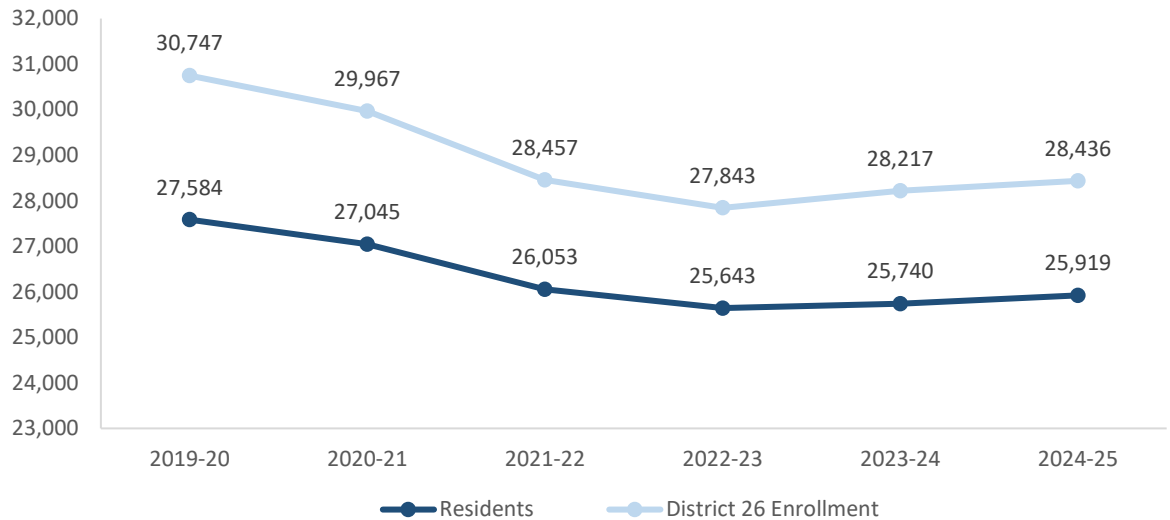


Table 3: District 26 Student Residential Population - 2019-20 to 2024-25

	2019-20	2020-21	2021-22	2022-23	2023-24	2024-25	1yr Change	5yr Change
K-5	11,982	11,654	11,181	10,975	10,973	10,851	-1%	-9%
6-8	6,735	6,594	6,061	5,924	6,035	6,215	3%	-8%
9-12	8,867	8,797	8,811	8,744	8,732	8,853	1%	0%
Total	27,584	27,045	26,053	25,643	25,740	25,919	1%	-6%
% Change YoY		-2.0%	-3.7%	-1.6%	0.4%	0.7%		

- Between 2019-20 and 2024-25, the K-5 residential population in District 26 declined by 9%.
- During this time, the 6-8 residential population in District 26 declined by 8%.
- Citywide, the K-12 residential population declined by 8% since 2019-20.

Source: Residential population is the sum of students attending any NYCPS school, charter or non-public school; as such, this metric will not capture students who are home schooled, have dropped out, or are otherwise not enrolled in these school options.

Table 4: Elementary School District Retention (Where District 26 Residents Enroll in School)

	2019-20	2020-21	2021-22	2022-23	2023-24	2024-25	% of Residents	
							2019-20	2024-25
District 26 Schools	10,200	9,689	9,220	9,000	8,965	8,803	85%	81%
Other District Schools	408	429	397	437	479	495	3%	5%
Charter Schools	11	26	27	28	42	38	0%	0%
Non-Public Schools	1,210	1,344	1,366	1,320	1,262	1,282	10%	12%
Other	153	166	171	190	225	233	1%	2%
Total	11,982	11,654	11,181	10,975	10,973	10,851	100%	100%
% Change YoY		-2.7%	-4.1%	-1.8%	0.0%	-1.1%		

Table 5: Middle School District Retention (Where District 26 Residents Enroll in School)

	2019-20	2020-21	2021-22	2022-23	2023-24	2024-25	% of Residents	
							2019-20	2024-25
District 26 Schools	5,368	5,237	4,693	4,540	4,707	4,839	80%	78%
Other District Schools	529	533	543	516	546	578	8%	9%
Charter Schools	4	7	13	15	13	9	0%	0%
Non-Public Schools	772	762	757	793	704	717	11%	12%
Other	62	55	55	60	65	72	1%	1%
Total	6,735	6,594	6,061	5,924	6,035	6,215	100%	100%
% Change YoY		-2.1%	-8.1%	-2.3%	1.9%	3.0%		

Table 6: Where District 26 Students Live - Grades K-5

	K-5		% of Students	
	2019-20	2024-25	2019-20	2024-25
District 26	10,200	8,803	93%	90%
Other District	785	945	7%	10%
	10,985	9,748	100%	100%

Table 7: Where District 26 Students Live - Grades 6-8

	6-8		% of Students	
	2019-20	2024-25	2019-20	2024-25
District 26	5,368	4,839	85%	85%
Other District	914	830	15%	15%
	6,282	5,669	100%	100%

Citywide Trends

- Citywide, the average **District Retention Rate** (the percent of students living in a district who enroll in a district school in that district) is 54% for ES and 49% for MS.
- Citywide, the average **District Enrollment Rate** (the percent of students enrolled in district schools who live in that district) is 83% for ES and 79% for MS.

Source: Audited Register for NYCPS and charter schools; NYCPS administrative data for non-public schools

DISTRICT ES AND MS ENROLLMENT MODEL ("IN-OUT MODEL")

The table below depicts the prevailing trends for students coming into the district ("IN") and leaving the district ("OUT") to help identify the primary drivers of district school enrollment change.

Table 8: In-Out Model - ES and MS

	ES			MS		
	2019-20	2024-25	% Chg	2019-20	2024-25	% Chg
Residents of District 26	11,982	10,851	-9%	6,735	6,215	-8%
- OUT to other districts	-408	-495	21%	-529	-578	9%
- OUT to D75/D79	-153	-233	52%	-62	-72	16%
- OUT to charters	-11	-38	245%	-4	-9	125%
- OUT to Non-Public Schools	-1,210	-1,282	6%	-772	-717	-7%
Total OUT	-1,782	-2,048	15%	-1,367	-1,376	1%
+ IN from other districts	+785	+945	20%	+914	+830	-9%
D26 Enrollment	10,985	9,748	-11%	6,282	5,669	-10%

Source: Audited Register for NYCPS and charter schools; NYCPS administrative data for non-public schools

Students Leaving the District:

- At the elementary school level, the largest number of students leaving District 26 enroll in non-public schools. Since 2019-20, this number has grown by 6%, as compared to the overall number of elementary school-aged residents, which has decreased by 9%.
- At the middle school level, the largest number of students leaving District 26 enroll in non-public schools. Since 2019-20, this number has decreased by 7%, as compared to the overall number of middle school-aged residents, which has decreased by 8%.

Students Coming into the District:

- At the elementary school level, a greater number of students living in other districts come into District 26 schools (945) than District 26 residents who leave for other district schools (495).
- At the middle school level, a greater number of students living in other districts come into District 26 schools (830) than District 26 residents who leave for other district schools (578).

ARTICULATION TRENDS

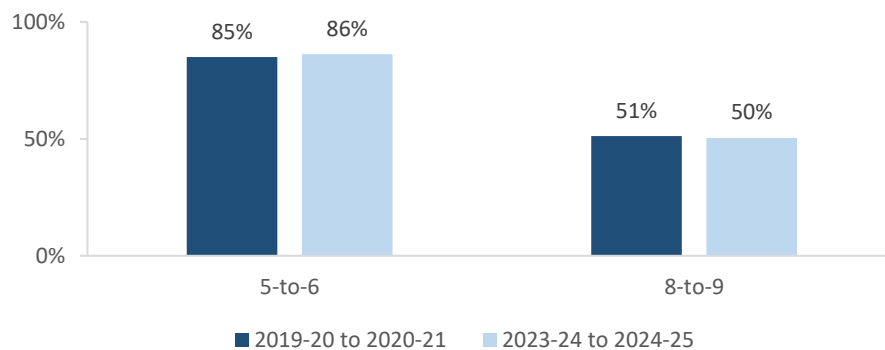
Table 9: 5-to-6 Articulation (Where District 26 5th Graders Enrolled the Following Year)

	2019-20 to 2020-21		2023-24 to 2024-25	
	#	%	#	%
District 26 Schools	1,603	85%	1,470	86%
Other District Schools	136	7%	113	7%
D75 Schools	0	0%	0	0%
D79 Schools	0	0%	0	0%
Charter Schools	0	0%	2	0%
Non-Public Schools	17	1%	26	2%
Out of NYC	90	5%	80	5%
Other	39	2%	14	1%
Total	1,885	100%	1,705	100%

Table 10: 8-to-9 Articulation (Where District 26 8th Graders Enrolled the Following Year)

	2019-20 to 2020-21		2023-24 to 2024-25	
	#	%	#	%
District 26 Schools	1,038	51%	905	50%
Other District Schools	643	32%	585	33%
D75 Schools	1	0%	1	0%
D79 Schools	0	0%	0	0%
Charter Schools	0	0%	1	0%
Non-Public Schools	173	9%	208	12%
Out of NYC	127	6%	93	5%
Other	48	2%	2	0%
Total	2,030	100%	1,795	100%

District 26 Students Remaining in District the Following Year



- Citywide, the average percent of graduating 5th graders who remain at a district school in the same district for 6th grade is 73%; for graduating 8th graders, the average percent of students who remain in the same district for 9th grade is 37%.

SCHOOL COUNTS BY ENROLLMENT RANGE

Table 11: District 26 School Counts by Enrollment Range

Enrollment Range	School Level							
	ECC	ES	MS	HS	K-8	6-12	K-12	Total
Less than 150	0	1	0	0	0	0	0	1
150-249	0	2	0	0	0	0	0	2
250-349	0	5	0	0	0	0	0	5
350-449	0	3	0	0	0	0	0	3
450-549	0	6	0	0	2	0	0	8
550+	0	4	5	6	0	0	0	15
<i>Total</i>	0	21	5	6	2	0	0	34

Number of Schools with Enrollment in Bottom 25% by School District - 2024-25



Source: Audited Register; includes district schools only; excludes pre-K centers and transfer schools.

ENROLLMENT VS. CAPACITY

Table 12: District 26 Enrollment vs. Capacity - Grades K-5

	Neighborhood(s)	Count of Schools	Enrollment	Capacity	Seat Excess / (Deficit)
District 26	N/A	23	9,748	9,103	(645)
Sub-District 1	Oakland Gdns, Fresh Meadows	8	3,697	3,764	67
Sub-District 2	Bayside and Auburndale	7	3,037	2,681	(356)
Sub-District 3	Little Neck, Bellerose, Glen Oaks	8	3,014	2,658	(356)

Table 13: District 26 Enrollment vs. Capacity - Grades 6-8

	Neighborhood(s)	Count of Schools	Enrollment	Capacity	Seat Excess / (Deficit)
District 26	N/A	7	5,669	6,399	730
Sub-District 1	Oakland Gdns, Fresh Meadows	3	2,815	2,485	(330)
Sub-District 2	Bayside and Auburndale	1	844	1,185	341
Sub-District 3	Little Neck, Bellerose, Glen Oaks	3	2,010	2,729	719

Source: Enrollment from 2024-25 Audited Register and grade-level capacity estimated from 2023-24 Blue Book; does not include new or planned capacity in 2024-25 and beyond.

BUILDING UTILIZATION

Each year, the SCA publishes the Blue Book, a report analyzing the capacity and enrollment for every NYCPS building across the city. "Under-Utilized Buildings" reflects the projected count of buildings that have at least 150 excess seats.

Table 14: Count of NYCPS Buildings by Utilization Status

	District 26	Queens
Count of Buildings	41	405
Under-Utilized (UU) Buildings	9	84
150-299 Excess Seats	5	46
300+ Excess Seats	4	38
Over-Utilized Buildings	19	148

Source: Enrollment and capacity from 2023-24 Blue Book; UU status is from a preliminary 2024-25 UU analysis, and accounts for building enrollment and planning changes implemented in 2024-25 and after.

DISTRICT 75

NYCPS's District 75 provides specialized instructional support for students with significant challenges, such as Autism Spectrum Disorder (ASD), significant cognitive delays, emotional disability, sensory impairment, and multiple disabilities. District 75 serves students through a number of different program models.

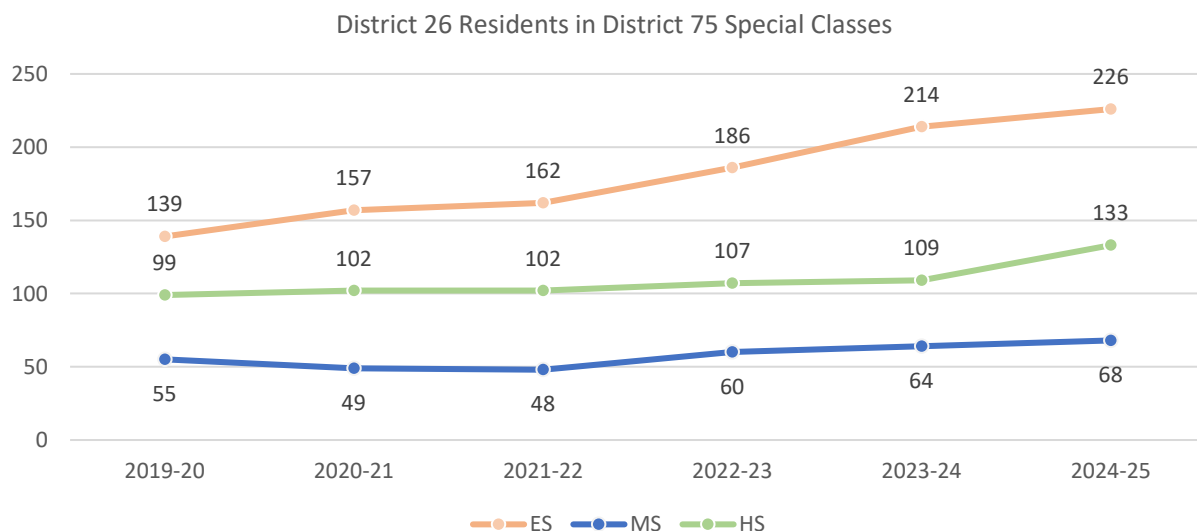
- Most District 75 students attend Special Class programs, which operate as distinct schools and may be located in standalone sites or co-located with district schools.
- A smaller number of students attend Inclusion Programs, in which students receive District 75 services within general education classes at a district school partner.

Table 15: District 75 Seat Need

	ES			MS			HS		
	District	Borough	City	District	Borough	City	District	Borough	City
Capacity	800	4,172	14,094	240	1,412	5,380	596	2,426	9,584
Residents	226	3,786	12,790	68	1,231	4,515	133	2,286	8,684
Deficit	No Deficit	No Deficit	No Deficit	No Deficit	No Deficit	No Deficit	No Deficit	No Deficit	No Deficit

Table 16: District 75 Residential Growth

	2019-20	2020-21	2021-22	2022-23	2023-24	2024-25	5yr Change	1yr Change
ES	139	157	162	186	214	226	6%	63%
MS	55	49	48	60	64	68	6%	24%
HS	99	102	102	107	109	133	22%	34%
All Grades	293	308	312	353	387	427	10%	46%



Source: Audited Register

DISTRICT DEMOGRAPHICS

Table 17: Ethnicity

	K-5			6-8			9-12		
	District	Borough	City	District	Borough	City	District	Borough	City
% Asian	60%	28%	17%	63%	28%	17%	48%	26%	16%
% Hispanic	18%	42%	42%	16%	43%	44%	25%	44%	44%
% Black	5%	15%	22%	5%	15%	23%	16%	17%	24%
% White	13%	11%	15%	12%	10%	13%	8%	9%	12%
% Other	4%	5%	4%	3%	4%	3%	3%	4%	3%

Table 18: Special Populations

	K-5			6-8			9-12		
	District	Borough	City	District	Borough	City	District	Borough	City
Students with Disabilities	19%	19%	21%	15%	18%	21%	14%	16%	19%
English Language Learners	16%	26%	22%	8%	17%	15%	11%	17%	15%
Economically Disadvantaged	55%	74%	76%	57%	74%	77%	70%	76%	77%
Students in Temporary Housing	4%	12%	12%	5%	12%	12%	6%	10%	11%

Source: 2024-25 Audited Register; includes charter schools located in the district and may differ slightly from the NYCPS Demographic Snapshot.

SPECIAL PROGRAMS

Table 19: District 26 Special Program Summary

	District 26	Queens
Schools with ASD Programs	4	30
<i>Horizon</i>	3	15
<i>Nest</i>	2	18
Schools with G&T Programs	5	39
Schools with Bilingual Ed Programs	3	86
<i>Dual Language (DL)</i>	2	35
<i>Transitional Bilingual Education (TBE)</i>	0	20
<i>DL/TBE</i>	1	31

Note: Schools with both *Horizon* and *Nest* programs are counted once in the top row but separately in the *Horizon* and *Nest* rows beneath.

