

District 28

Data Summary

2026-2027 Strategic Planning Data Considerations

Contents

Citywide Enrollment	1
District Enrollment	2
Residential Population and District Retention	3
District ES and MS Enrollment Model ("In-Out Model")	5
Articulation Trends	6
School Counts by Enrollment Range	7
Enrollment vs. Capacity	8
Building Utilization	8
District 75	9
District Demographics	10
Special Programs	10

CITYWIDE ENROLLMENT (DISTRICT AND CHARTER), 2015-16 TO 2024-25

New York City Public Schools (NYCPS) is committed to thoughtful collaboration with districts and communities to collectively strengthen schools, support students and families, and respond to demographic and population changes in New York City.



Source: Audited Register and Charter Headcount; includes district and charter school enrollment only

- Enrollment in D1-32 schools decreased slightly in 2024-2025, remaining approximately stable compared to the steeper declines following the onset of the COVID-19 pandemic.
- Citywide, K-12 enrollment in District 1-32 schools and charter schools has declined by about 10% since its peak in the 2016-2017 school year.

DISTRICT ENROLLMENT

District 28 Enrollment by Grade Level and Year (District Schools Only)

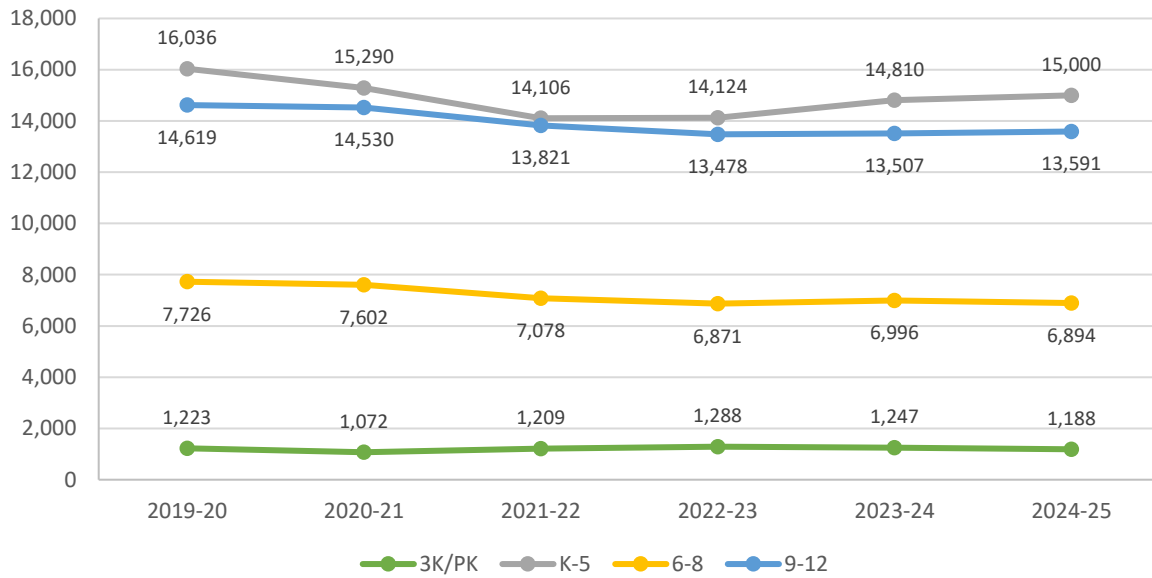


Table 1: District 28 Enrollment - 2019-20 to 2024-25

	2019-20	2020-21	2021-22	2022-23	2023-24	2024-25	1yr Change	5yr Change
3K	-	2	139	193	194	169	-13%	-
PK	1,223	1,070	1,070	1,095	1,053	1,019	-3%	-17%
K-5	16,036	15,290	14,106	14,124	14,810	15,000	1%	-6%
6-8	7,726	7,602	7,078	6,871	6,996	6,894	-1%	-11%
9-12	14,619	14,530	13,821	13,478	13,507	13,591	1%	-7%
Total	39,604	38,494	36,214	35,761	36,560	36,673	0%	-7%
% Change YoY		-2.8%	-5.9%	-1.3%	2.2%	0.3%		

Table 2: District 28 Entry Grade Enrollment - 2019-20 to 2024-25

	2019-20	2020-21	2021-22	2022-23	2023-24	2024-25	1yr Change	5yr Change
K	2,752	2,529	2,390	2,354	2,524	2,465	-2.3%	-10%
6	2,603	2,484	2,334	2,230	2,308	2,290	-0.8%	-12%
9	3,985	3,881	3,608	3,553	3,627	3,751	3.4%	-6%

Source: Audited Register; includes enrollment in district schools only

RESIDENTIAL POPULATION AND DISTRICT RETENTION

District 28 K-12 Enrollment vs. Residential Population

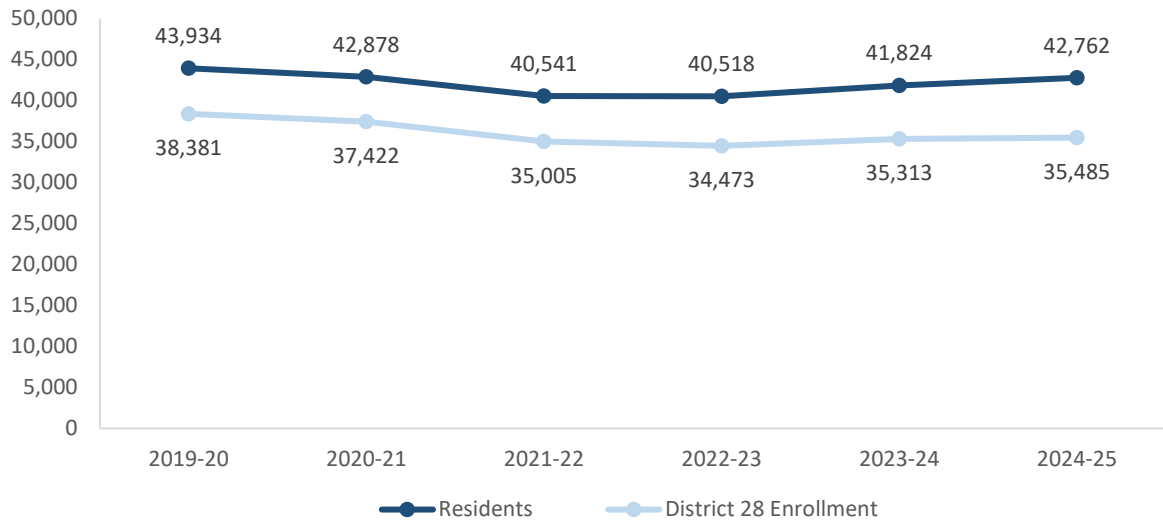


Table 3: District 28 Student Residential Population - 2019-20 to 2024-25

	2019-20	2020-21	2021-22	2022-23	2023-24	2024-25	1yr Change	5yr Change
K-5	20,429	19,770	18,387	18,353	19,112	19,599	3%	-4%
6-8	9,772	9,753	9,246	9,062	9,239	9,339	1%	-4%
9-12	13,733	13,355	12,908	13,103	13,473	13,824	3%	1%
Total	43,934	42,878	40,541	40,518	41,824	42,762	2%	-3%
% Change YoY		-2.4%	-5.5%	-0.1%	3.2%	2.2%		

- Between 2019-20 and 2024-25, the K-5 residential population in District 28 declined by 4%.
- During this time, the 6-8 residential population in District 28 declined by 4%.
- Citywide, the K-12 residential population declined by 8% since 2019-20.

Source: Residential population is the sum of students attending any NYCPS school, charter or non-public school; as such, this metric will not capture students who are home schooled, have dropped out, or are otherwise not enrolled in these school options.

Table 4: Elementary School District Retention (Where District 28 Residents Enroll in School)

	2019-20	2020-21	2021-22	2022-23	2023-24	2024-25	% of Residents	
							2019-20	2024-25
District 28 Schools	15,038	14,269	13,202	13,230	13,771	13,800	74%	70%
Other District Schools	1,503	1,494	1,237	1,259	1,423	1,616	7%	8%
Charter Schools	1,051	1,188	1,192	1,199	1,343	1,552	5%	8%
Non-Public Schools	2,388	2,355	2,274	2,174	2,016	1,984	12%	10%
Other	449	464	482	491	559	647	2%	3%
Total	20,429	19,770	18,387	18,353	19,112	19,599	100%	100%
% Change YoY		-3.2%	-7.0%	-0.2%	4.1%	2.5%		

Table 5: Middle School District Retention (Where District 28 Residents Enroll in School)

	2019-20	2020-21	2021-22	2022-23	2023-24	2024-25	% of Residents	
							2019-20	2024-25
District 28 Schools	6,795	6,735	6,205	6,029	6,081	6,025	70%	65%
Other District Schools	1,195	1,164	1,109	1,060	1,146	1,165	12%	12%
Charter Schools	211	363	445	479	570	665	2%	7%
Non-Public Schools	1,375	1,293	1,299	1,302	1,221	1,249	14%	13%
Other	196	198	188	192	221	235	2%	3%
Total	9,772	9,753	9,246	9,062	9,239	9,339	100%	100%
% Change YoY		-0.2%	-5.2%	-2.0%	2.0%	1.1%		

Table 6: Where District 28 Students Live - Grades K-5

	K-5		% of Students	
	2019-20	2024-25	2019-20	2024-25
District 28	15,038	13,800	94%	92%
Other District	998	1,200	6%	8%
	16,036	15,000	100%	100%

Table 7: Where District 28 Students Live - Grades 6-8

	6-8		% of Students	
	2019-20	2024-25	2019-20	2024-25
District 28	6,795	6,025	88%	87%
Other District	931	869	12%	13%
	7,726	6,894	100%	100%

Citywide Trends

- Citywide, the average **District Retention Rate** (the percent of students living in a district who enroll in a district school in that district) is 54% for ES and 49% for MS.

- Citywide, the average **District Enrollment Rate** (the percent of students enrolled in district schools who live in that district) is 83% for ES and 79% for MS.

Source: Audited Register for NYCPS and charter schools; NYCPS administrative data for non-public schools

DISTRICT ES AND MS ENROLLMENT MODEL ("IN-OUT MODEL")

The table below depicts the prevailing trends for students coming into the district ("IN") and leaving the district ("OUT") to help identify the primary drivers of district school enrollment change.

Table 8: In-Out Model - ES and MS

	ES			MS		
	2019-20	2024-25	% Chg	2019-20	2024-25	% Chg
Residents of District 28	20,429	19,599	-4%	9,772	9,339	-4%
- OUT to other districts	-1,503	-1,616	8%	-1,195	-1,165	-3%
- OUT to D75/D79	-449	-647	44%	-196	-235	20%
- OUT to charters	-1,051	-1,552	48%	-211	-665	215%
- OUT to Non-Public Schools	-2,388	-1,984	-17%	-1,375	-1,249	-9%
Total OUT	-5,391	-5,799	8%	-2,977	-3,314	11%
+ IN from other districts	+998	+1,200	20%	+931	+869	-7%
D28 Enrollment	16,036	15,000	-6%	7,726	6,894	-11%

Source: Audited Register for NYCPS and charter schools; NYCPS administrative data for non-public schools

Students Leaving the District:

- At the elementary school level, the largest number of students leaving District 28 enroll in non-public schools. Since 2019-20, this number has decreased by 17%, as compared to the overall number of elementary school-aged residents, which has decreased by 4%.
- At the middle school level, the largest number of students leaving District 28 enroll in non-public schools. Since 2019-20, this number has decreased by 9%, as compared to the overall number of middle school-aged residents, which has decreased by 4%.

Students Coming into the District:

- At the elementary school level, a smaller number of students living in other districts come into District 28 schools (1,200) than District 28 residents who leave for other district schools (1,616).
- At the middle school level, a smaller number of students living in other districts come into District 28 schools (869) than District 28 residents who leave for other district schools (1,165).

ARTICULATION TRENDS

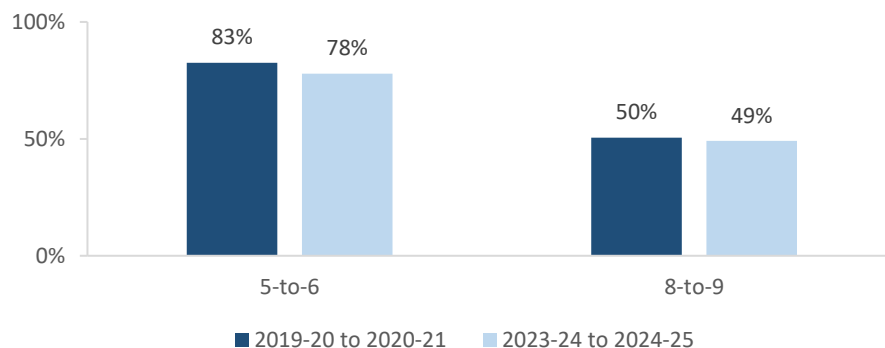
Table 9: 5-to-6 Articulation (Where District 28 5th Graders Enrolled the Following Year)

	2019-20 to 2020-21		2023-24 to 2024-25	
	#	%	#	%
District 28 Schools	2,140	83%	1,825	78%
Other District Schools	251	10%	247	11%
D75 Schools	2	0%	1	0%
D79 Schools	0	0%	0	0%
Charter Schools	32	1%	56	2%
Non-Public Schools	50	2%	58	2%
Out of NYC	107	4%	138	6%
Other	10	0%	18	1%
Total	2,592	100%	2,343	100%

Table 10: 8-to-9 Articulation (Where District 28 8th Graders Enrolled the Following Year)

	2019-20 to 2020-21		2023-24 to 2024-25	
	#	%	#	%
District 28 Schools	1,279	50%	1,186	49%
Other District Schools	1,055	42%	994	41%
D75 Schools	3	0%	1	0%
D79 Schools	0	0%	4	0%
Charter Schools	14	1%	14	1%
Non-Public Schools	38	1%	88	4%
Out of NYC	107	4%	122	5%
Other	38	1%	8	0%
Total	2,534	100%	2,417	100%

District 28 Students Remaining in District the Following Year



- Citywide, the average percent of graduating 5th graders who remain at a district school in the same district for 6th grade is 73%; for graduating 8th graders, the average percent of students who remain in the same district for 9th grade is 37%.

SCHOOL COUNTS BY ENROLLMENT RANGE

Table 11: District 28 School Counts by Enrollment Range

Enrollment Range	School Level							
	ECC	ES	MS	HS	K-8	6-12	K-12	Total
Less than 150	0	0	0	0	0	0	0	0
150-249	0	0	0	1	0	0	0	1
250-349	0	4	4	0	0	0	0	8
350-449	0	2	1	1	0	0	0	4
450-549	0	6	0	3	0	1	0	10
550+	0	15	3	5	0	4	0	27
<i>Total</i>	0	27	8	10	0	5	0	50

Number of Schools with Enrollment in Bottom 25% by School District - 2024-25



Source: Audited Register; includes district schools only; excludes pre-K centers and transfer schools.

ENROLLMENT VS. CAPACITY

Table 12: District 28 Enrollment vs. Capacity - Grades K-5

	Neighborhood(s)	Count of Schools	Enrollment	Capacity	Seat Excess / (Deficit)
District 28	N/A	27	15,000	15,323	323
Sub-District 1	S. Jamaica, Rochdale, Kew Gdns	11	5,119	5,316	197
Sub-District 2	Rego Pk, Forest Hills, Kew Gdns	16	9,881	10,007	126

Table 13: District 28 Enrollment vs. Capacity - Grades 6-8

	Neighborhood(s)	Count of Schools	Enrollment	Capacity	Seat Excess / (Deficit)
District 28	N/A	14	6,894	7,885	991
Sub-District 1	S. Jamaica, Rochdale, Kew Gdns	5	1,512	2,290	778
Sub-District 2	Rego Pk, Forest Hills, Kew Gdns	9	5,382	5,595	213

Source: Enrollment from 2024-25 Audited Register and grade-level capacity estimated from 2023-24 Blue Book; does not include new or planned capacity in 2024-25 and beyond.

BUILDING UTILIZATION

Each year, the SCA publishes the Blue Book, a report analyzing the capacity and enrollment for every NYCPS building across the city. "Under-Utilized Buildings" reflects the projected count of buildings that have at least 150 excess seats.

Table 14: Count of NYCPS Buildings by Utilization Status

	District 28	Queens
Count of Buildings	55	405
Under-Utilized (UU) Buildings	13	84
150-299 Excess Seats	6	46
300+ Excess Seats	7	38
Over-Utilized Buildings	22	148

Source: Enrollment and capacity from 2023-24 Blue Book; UU status is from a preliminary 2024-25 UU analysis, and accounts for building enrollment and planning changes implemented in 2024-25 and after.

DISTRICT 75

NYCPS's District 75 provides specialized instructional support for students with significant challenges, such as Autism Spectrum Disorder (ASD), significant cognitive delays, emotional disability, sensory impairment, and multiple disabilities. District 75 serves students through a number of different program models.

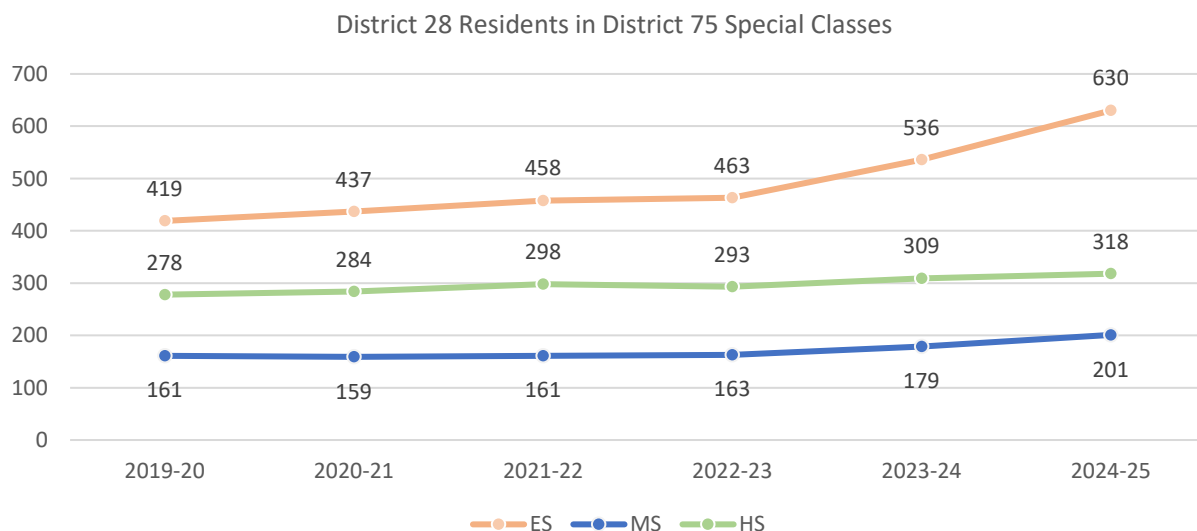
- Most District 75 students attend Special Class programs, which operate as distinct schools and may be located in standalone sites or co-located with district schools.
- A smaller number of students attend Inclusion Programs, in which students receive District 75 services within general education classes at a district school partner.

Table 15: District 75 Seat Need

	ES			MS			HS		
	District	Borough	City	District	Borough	City	District	Borough	City
Capacity	408	4,172	14,094	246	1,412	5,380	532	2,426	9,584
Residents	630	3,786	12,790	201	1,231	4,515	318	2,286	8,684
Deficit	-222	No Deficit	No Deficit	No Deficit	No Deficit	No Deficit	No Deficit	No Deficit	No Deficit

Table 16: District 75 Residential Growth

	2019-20	2020-21	2021-22	2022-23	2023-24	2024-25	5yr Change	1yr Change
ES	419	437	458	463	536	630	18%	50%
MS	161	159	161	163	179	201	12%	25%
HS	278	284	298	293	309	318	3%	14%
All Grades	858	880	917	919	1,024	1,149	12%	34%



Source: Audited Register

DISTRICT DEMOGRAPHICS

Table 17: Ethnicity

	K-5			6-8			9-12		
	District	Borough	City	District	Borough	City	District	Borough	City
% Asian	28%	28%	17%	25%	28%	17%	31%	26%	16%
% Hispanic	33%	42%	42%	34%	43%	44%	35%	44%	44%
% Black	17%	15%	22%	23%	15%	23%	18%	17%	24%
% White	13%	11%	15%	11%	10%	13%	11%	9%	12%
% Other	8%	5%	4%	6%	4%	3%	5%	4%	3%

Table 18: Special Populations

	K-5			6-8			9-12		
	District	Borough	City	District	Borough	City	District	Borough	City
Students with Disabilities	18%	19%	21%	17%	18%	21%	14%	16%	19%
English Language Learners	21%	26%	22%	14%	17%	15%	14%	17%	15%
Economically Disadvantaged	71%	74%	76%	71%	74%	77%	74%	76%	77%
Students in Temporary Housing	12%	12%	12%	11%	12%	12%	9%	10%	11%

Source: 2024-25 Audited Register; includes charter schools located in the district and may differ slightly from the NYCPS Demographic Snapshot.

SPECIAL PROGRAMS

Table 19: District 28 Special Program Summary

	District 28	Queens
Schools with ASD Programs	2	30
<i>Horizon</i>	1	15
<i>Nest</i>	1	18
Schools with G&T Programs	6	39
Schools with Bilingual Ed Programs	6	86
<i>Dual Language (DL)</i>	4	35
<i>Transitional Bilingual Education (TBE)</i>	0	20
<i>DL/TBE</i>	2	31

Note: Schools with both *Horizon* and *Nest* programs are counted once in the top row but separately in the *Horizon* and *Nest* rows beneath.

