

# District 29 Data Summary

2026-2027 Strategic Planning Data Considerations

## Contents

Citywide Enrollment	I
District Enrollment	2
Residential Population and District Retention	3
District ES and MS Enrollment Model ("In-Out Model")	5
Articulation Trends	6
School Counts by Enrollment Range	7
Enrollment vs. Capacity	8
Building Utilization	8
District 75	9
District Demographics	10
Special Programs	10

## CITYWIDE ENROLLMENT (DISTRICT AND CHARTER), 2015-16 TO 2024-25

New York City Public Schools (NYCPS) is committed to thoughtful collaboration with districts and communities to collectively strengthen schools, support students and families, and respond to demographic and population changes in New York City.



Source: Audited Register and Charter Headcount; includes district and charter school enrollment only

- Enrollment in D1-32 schools decreased slightly in 2024-2025, remaining approximately stable compared to the steeper declines following the onset of the COVID-19 pandemic.
- Citywide, K-12 enrollment in District 1-32 schools and charter schools has declined by about 10% since its peak in the 2016-2017 school year.

## DISTRICT ENROLLMENT

District 29 Enrollment by Grade Level and Year (District Schools Only)

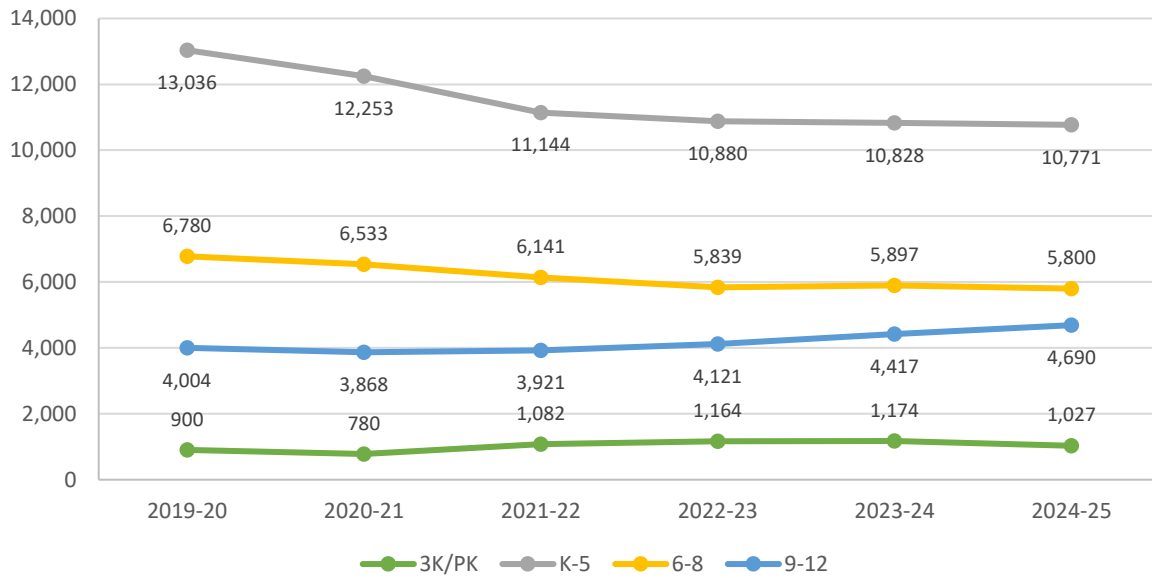


Table 1: District 29 Enrollment - 2019-20 to 2024-25

	2019-20	2020-21	2021-22	2022-23	2023-24	2024-25	1yr Change	5yr Change
3K	-	7	199	259	200	234	17%	-
PK	900	773	883	905	974	793	-19%	-12%
K-5	13,036	12,253	11,144	10,880	10,828	10,771	-1%	-17%
6-8	6,780	6,533	6,141	5,839	5,897	5,800	-2%	-14%
9-12	4,004	3,868	3,921	4,121	4,417	4,690	6%	17%
<b>Total</b>	<b>24,720</b>	<b>23,434</b>	<b>22,288</b>	<b>22,004</b>	<b>22,316</b>	<b>22,288</b>	<b>0%</b>	<b>-10%</b>
<b>% Change YoY</b>		-5.2%	-4.9%	-1.3%	1.4%	-0.1%		

Table 2: District 29 Entry Grade Enrollment - 2019-20 to 2024-25

	2019-20	2020-21	2021-22	2022-23	2023-24	2024-25	1yr Change	5yr Change
K	2,038	1,801	1,667	1,717	1,679	1,770	5.4%	-13%
6	2,207	2,110	2,009	1,860	1,939	1,830	-5.6%	-17%
9	1,165	1,041	1,173	1,129	1,272	1,239	-2.6%	6%

Source: Audited Register; includes enrollment in district schools only

## RESIDENTIAL POPULATION AND DISTRICT RETENTION

District 29 K-12 Enrollment vs. Residential Population

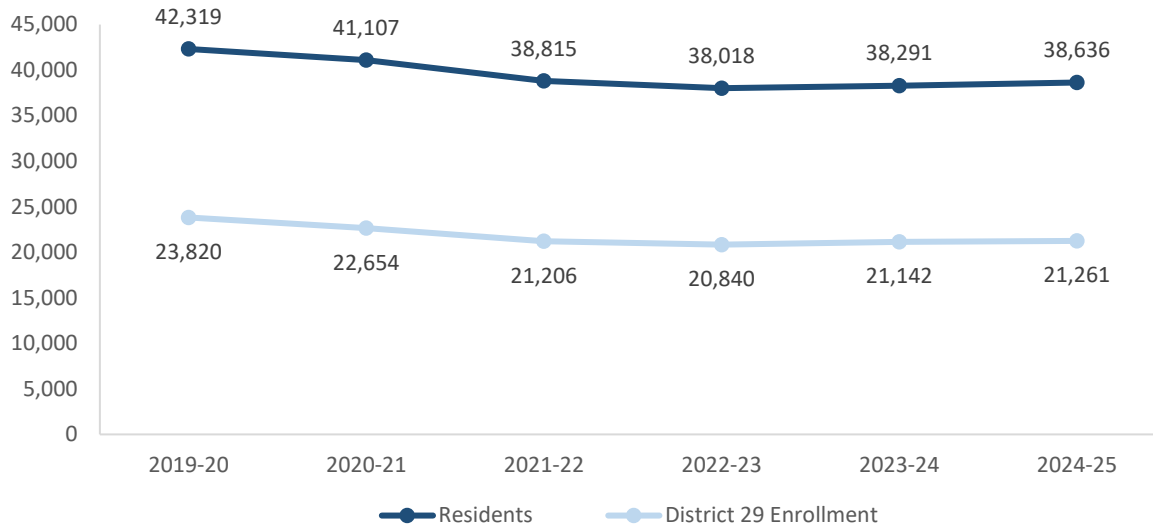


Table 3: District 29 Student Residential Population - 2019-20 to 2024-25

	2019-20	2020-21	2021-22	2022-23	2023-24	2024-25	1yr Change	5yr Change
K-5	18,331	17,746	16,376	16,096	16,329	16,342	0%	-11%
6-8	9,754	9,403	8,965	8,756	8,819	8,851	0%	-9%
9-12	14,234	13,958	13,474	13,166	13,143	13,443	2%	-6%
<b>Total</b>	<b>42,319</b>	<b>41,107</b>	<b>38,815</b>	<b>38,018</b>	<b>38,291</b>	<b>38,636</b>	<b>1%</b>	<b>-9%</b>
% Change YoY		-2.9%	-5.6%	-2.1%	0.7%	0.9%		

- Between 2019-20 and 2024-25, the K-5 residential population in District 29 declined by 11%.
- During this time, the 6-8 residential population in District 29 declined by 9%.
- Citywide, the K-12 residential population declined by 8% since 2019-20.

Source: Residential population is the sum of students attending any NYCPS school, charter or non-public school; as such, this metric will not capture students who are home schooled, have dropped out, or are otherwise not enrolled in these school options.

Table 4: Elementary School District Retention (Where District 29 Residents Enroll in School)

	2019-20	2020-21	2021-22	2022-23	2023-24	2024-25	% of Residents	
							2019-20	2024-25
District 29 Schools	12,242	11,499	10,420	10,155	10,083	10,000	67%	61%
Other District Schools	1,338	1,342	1,228	1,149	1,226	1,399	7%	9%
Charter Schools	2,542	2,798	2,749	2,798	3,108	3,077	14%	19%
Non-Public Schools	1,771	1,646	1,518	1,473	1,341	1,268	10%	8%
Other	438	461	461	521	571	598	2%	4%
<b>Total</b>	<b>18,331</b>	<b>17,746</b>	<b>16,376</b>	<b>16,096</b>	<b>16,329</b>	<b>16,342</b>	<b>100%</b>	<b>100%</b>
% Change YoY		-3.2%	-7.7%	-1.7%	1.4%	0.1%		

Table 5: Middle School District Retention (Where District 29 Residents Enroll in School)

	2019-20	2020-21	2021-22	2022-23	2023-24	2024-25	% of Residents	
							2019-20	2024-25
District 29 Schools	6,239	5,972	5,557	5,280	5,287	5,205	64%	59%
Other District Schools	1,649	1,556	1,443	1,427	1,460	1,443	17%	16%
Charter Schools	537	672	803	934	990	1,148	6%	13%
Non-Public Schools	1,099	983	946	916	867	830	11%	9%
Other	230	220	216	199	215	225	2%	3%
<b>Total</b>	<b>9,754</b>	<b>9,403</b>	<b>8,965</b>	<b>8,756</b>	<b>8,819</b>	<b>8,851</b>	<b>100%</b>	<b>100%</b>
% Change YoY		-3.6%	-4.7%	-2.3%	0.7%	0.4%		

Table 6: Where District 29 Students Live - Grades K-5

	K-5		% of Students	
	2019-20	2024-25	2019-20	2024-25
District 29	12,242	10,000	94%	93%
Other District	794	771	6%	7%
	13,036	10,771	100%	100%

Table 7: Where District 29 Students Live - Grades 6-8

	6-8		% of Students	
	2019-20	2024-25	2019-20	2024-25
District 29	6,239	5,205	92%	90%
Other District	541	595	8%	10%
	6,780	5,800	100%	100%

### Citywide Trends

- Citywide, the average **District Retention Rate** (the percent of students living in a district who enroll in a district school in that district ) is 54% for ES and 49% for MS.
- Citywide, the average **District Enrollment Rate** (the percent of students enrolled in district schools who live in that district) is 83% for ES and 79% for MS.

Source: Audited Register for NYCPS and charter schools; NYCPS administrative data for non-public schools

## DISTRICT ES AND MS ENROLLMENT MODEL ("IN-OUT MODEL")

The table below depicts the prevailing trends for students coming into the district ("IN") and leaving the district ("OUT") to help identify the primary drivers of district school enrollment change.

**Table 8: In-Out Model - ES and MS**

	ES			MS		
	2019-20	2024-25	% Chg	2019-20	2024-25	% Chg
<b>Residents of District 29</b>	<b>18,331</b>	<b>16,342</b>	<b>-11%</b>	<b>9,754</b>	<b>8,851</b>	<b>-9%</b>
- OUT to other districts	-1,338	-1,399	5%	-1,649	-1,443	-12%
- OUT to D75/D79	-438	-598	37%	-230	-225	-2%
- OUT to charters	-2,542	-3,077	21%	-537	-1,148	114%
- OUT to Non-Public Schools	-1,771	-1,268	-28%	-1,099	-830	-24%
<b>Total OUT</b>	<b>-6,089</b>	<b>-6,342</b>	<b>4%</b>	<b>-3,515</b>	<b>-3,646</b>	<b>4%</b>
<b>+ IN from other districts</b>	<b>+794</b>	<b>+771</b>	<b>-3%</b>	<b>+541</b>	<b>+595</b>	<b>10%</b>
<b>D29 Enrollment</b>	<b>13,036</b>	<b>10,771</b>	<b>-17%</b>	<b>6,780</b>	<b>5,800</b>	<b>-14%</b>

*Source: Audited Register for NYCPS and charter schools; NYCPS administrative data for non-public schools*

### Students Leaving the District:

- At the elementary school level, the largest number of students leaving District 29 enroll in charter schools. Since 2019-20, this number has grown by 21%, as compared to the overall number of elementary school-aged residents, which has decreased by 11%.
- At the middle school level, the largest number of students leaving District 29 enroll in district schools outside of District 29. Since 2019-20, this number has decreased by 12%, as compared to the overall number of middle school-aged residents, which has decreased by 9%.

### Students Coming into the District:

- At the elementary school level, a smaller number of students living in other districts come into District 29 schools (771) than District 29 residents who leave for other district schools (1,399).
- At the middle school level, a smaller number of students living in other districts come into District 29 schools (595) than District 29 residents who leave for other district schools (1,443).

## ARTICULATION TRENDS

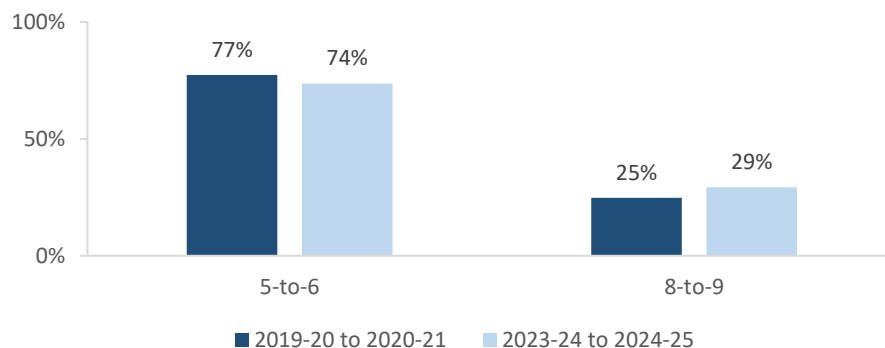
Table 9: 5-to-6 Articulation (Where District 29 5th Graders Enrolled the Following Year)

	2019-20 to 2020-21		2023-24 to 2024-25	
	#	%	#	%
District 29 Schools	1,736	77%	1,462	74%
Other District Schools	311	14%	319	16%
D75 Schools	1	0%	3	0%
D79 Schools	0	0%	0	0%
Charter Schools	26	1%	42	2%
Non-Public Schools	27	1%	25	1%
Out of NYC	126	6%	117	6%
Other	18	1%	17	1%
<b>Total</b>	<b>2,245</b>	<b>100%</b>	<b>1,985</b>	<b>100%</b>

Table 10: 8-to-9 Articulation (Where District 29 8th Graders Enrolled the Following Year)

	2019-20 to 2020-21		2023-24 to 2024-25	
	#	%	#	%
District 29 Schools	560	25%	604	29%
Other District Schools	1,449	64%	1,257	61%
D75 Schools	1	0%	1	0%
D79 Schools	4	0%	4	0%
Charter Schools	76	3%	32	2%
Non-Public Schools	32	1%	27	1%
Out of NYC	125	6%	123	6%
Other	17	1%	13	1%
<b>Total</b>	<b>2,264</b>	<b>100%</b>	<b>2,061</b>	<b>100%</b>

District 29 Students Remaining in District the Following Year



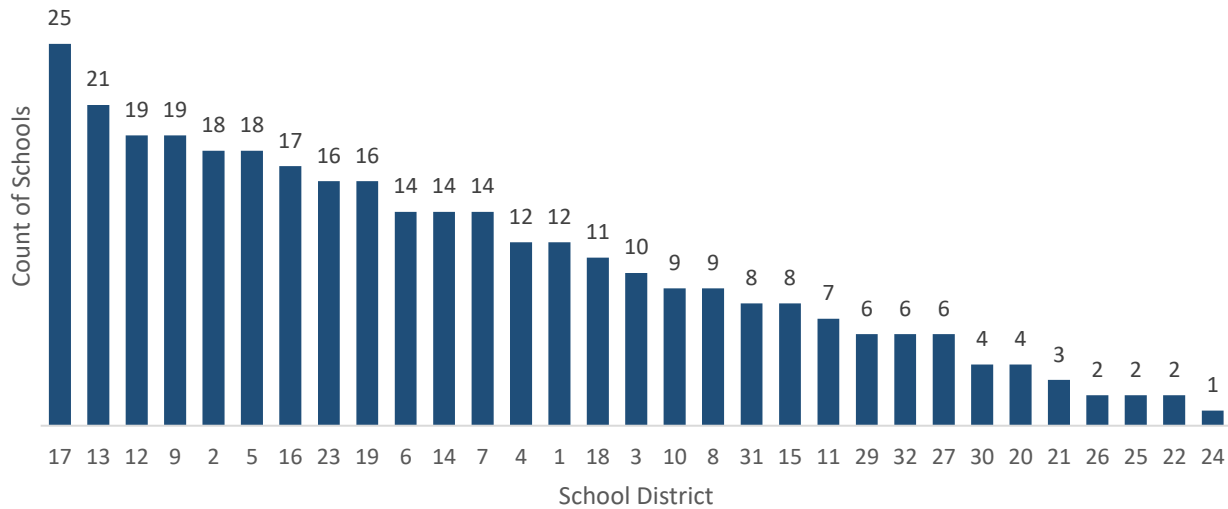
- Citywide, the average percent of graduating 5th graders who remain at a district school in the same district for 6th grade is 73%; for graduating 8th graders, the average percent of students who remain in the same district for 9th grade is 37%.

## SCHOOL COUNTS BY ENROLLMENT RANGE

Table 11: District 29 School Counts by Enrollment Range

Enrollment Range	School Level							
	ECC	ES	MS	HS	K-8	6-12	K-12	Total
Less than 150	0	1	0	0	0	0	0	1
150-249	0	3	1	0	0	0	0	4
250-349	0	9	2	1	0	0	0	12
350-449	0	2	2	3	1	0	0	8
450-549	0	1	0	3	3	2	0	9
550+	0	5	2	1	3	1	0	12
<i>Total</i>	0	21	7	8	7	3	0	46

Number of Schools with Enrollment in Bottom 25% by School District - 2024-25



Source: Audited Register; includes district schools only; excludes pre-K centers and transfer schools.



## ENROLLMENT VS. CAPACITY

Table 12: District 29 Enrollment vs. Capacity - Grades K-5

	Neighborhood(s)	Count of Schools	Enrollment	Capacity	Seat Excess / (Deficit)
<b>District 29</b>	<b>N/A</b>	<b>28</b>	<b>10,771</b>	<b>12,417</b>	<b>1,646</b>
Sub-District 1	Rosedale, Laurelton, Springfield	8	1,925	2,798	873
Sub-District 2	Cambria Hts, St. Albans	7	2,124	2,749	625
Sub-District 3	Hollis	8	4,326	4,259	(67)
Sub-District 4	Queens Village	5	2,396	2,611	215

Table 13: District 29 Enrollment vs. Capacity - Grades 6-8

	Neighborhood(s)	Count of Schools	Enrollment	Capacity	Seat Excess / (Deficit)
<b>District 29</b>	<b>N/A</b>	<b>17</b>	<b>5,800</b>	<b>7,900</b>	<b>2,100</b>
Sub-District 1	Rosedale, Laurelton, Springfield	5	1,256	1,807	551
Sub-District 2	Cambria Hts, St. Albans	4	1,046	1,327	281
Sub-District 3	Hollis	5	2,047	2,866	819
Sub-District 4	Queens Village	3	1,451	1,900	449

Source: Enrollment from 2024-25 Audited Register and grade-level capacity estimated from 2023-24 Blue Book; does not include new or planned capacity in 2024-25 and beyond.

## BUILDING UTILIZATION

Each year, the SCA publishes the Blue Book, a report analyzing the capacity and enrollment for every NYCPS building across the city. "Under-Utilized Buildings" reflects the projected count of buildings that have at least 150 excess seats.

Table 14: Count of NYCPS Buildings by Utilization Status

	District 29	Queens
<b>Count of Buildings</b>	<b>48</b>	<b>405</b>
<b>Under-Utilized (UU) Buildings</b>	<b>13</b>	<b>84</b>
150-299 Excess Seats	9	46
300+ Excess Seats	4	38
<b>Over-Utilized Buildings</b>	<b>7</b>	<b>148</b>

Source: Enrollment and capacity from 2023-24 Blue Book; UU status is from a preliminary 2024-25 UU analysis, and accounts for building enrollment and planning changes implemented in 2024-25 and after.

## DISTRICT 75

NYCPS's District 75 provides specialized instructional support for students with significant challenges, such as Autism Spectrum Disorder (ASD), significant cognitive delays, emotional disability, sensory impairment, and multiple disabilities. District 75 serves students through a number of different program models.

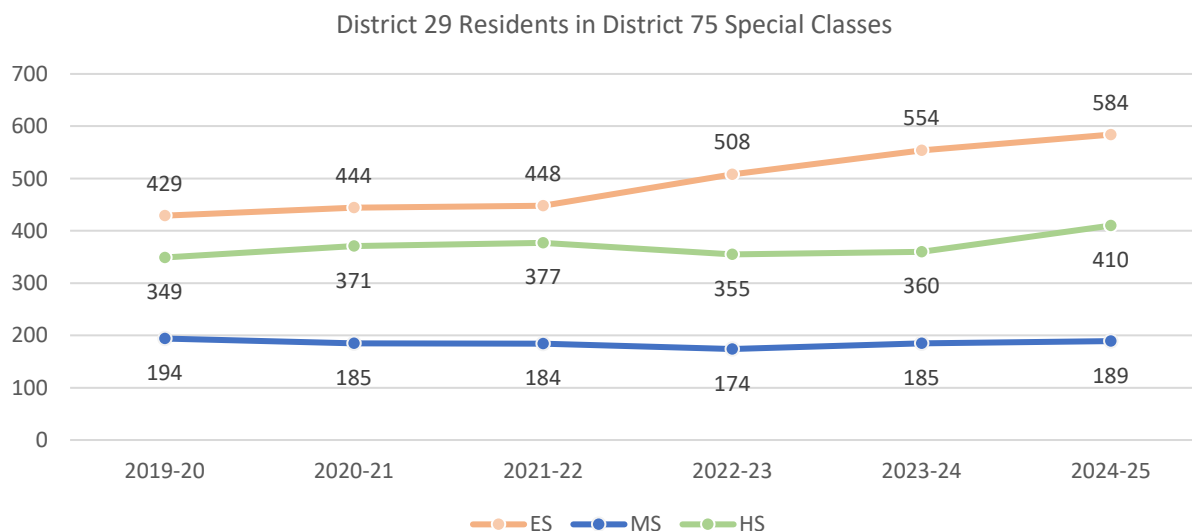
- Most District 75 students attend Special Class programs, which operate as distinct schools and may be located in standalone sites or co-located with district schools.
- A smaller number of students attend Inclusion Programs, in which students receive District 75 services within general education classes at a district school partner.

Table 15: District 75 Seat Need

	ES			MS			HS		
	District	Borough	City	District	Borough	City	District	Borough	City
<b>Capacity</b>	586	4,172	14,094	102	1,412	5,380	66	2,426	9,584
<b>Residents</b>	584	3,786	12,790	189	1,231	4,515	410	2,286	8,684
<b>Deficit</b>	No Deficit	No Deficit	No Deficit	-87	No Deficit	No Deficit	-344	No Deficit	No Deficit

Table 16: District 75 Residential Growth

	2019-20	2020-21	2021-22	2022-23	2023-24	2024-25	5yr Change	1yr Change
<b>ES</b>	429	444	448	508	554	584	5%	36%
<b>MS</b>	194	185	184	174	185	189	2%	-3%
<b>HS</b>	349	371	377	355	360	410	14%	17%
<b>All Grades</b>	972	1,000	1,009	1,037	1,099	1,183	8%	22%



Source: Audited Register

## DISTRICT DEMOGRAPHICS

Table 17: Ethnicity

	K-5			6-8			9-12		
	District	Borough	City	District	Borough	City	District	Borough	City
% Asian	20%	28%	17%	14%	28%	17%	7%	26%	16%
% Hispanic	20%	42%	42%	22%	43%	44%	17%	44%	44%
% Black	53%	15%	22%	56%	15%	23%	70%	17%	24%
% White	1%	11%	15%	1%	10%	13%	0.8%	9%	12%
% Other	6%	5%	4%	6%	4%	3%	4%	4%	3%

Table 18: Special Populations

	K-5			6-8			9-12		
	District	Borough	City	District	Borough	City	District	Borough	City
Students with Disabilities	19%	19%	21%	19%	18%	21%	16%	16%	19%
English Language Learners	15%	26%	22%	12%	17%	15%	11%	17%	15%
Economically Disadvantaged	75%	74%	76%	73%	74%	77%	77%	76%	77%
Students in Temporary Housing	10%	12%	12%	11%	12%	12%	10%	10%	11%

Source: 2024-25 Audited Register; includes charter schools located in the district and may differ slightly from the NYCPS Demographic Snapshot.

## SPECIAL PROGRAMS

Table 19: District 29 Special Program Summary

	District 29	Queens
Schools with ASD Programs	3	30
<i>Horizon</i>	2	15
<i>Nest</i>	1	18
Schools with G&T Programs	3	39
Schools with Bilingual Ed Programs	3	86
<i>Dual Language (DL)</i>	1	35
<i>Transitional Bilingual Education (TBE)</i>	0	20
<i>DL/TBE</i>	2	31

Note: Schools with both *Horizon* and *Nest* programs are counted once in the top row but separately in the *Horizon* and *Nest* rows beneath.

