

# District 3

# Data Summary

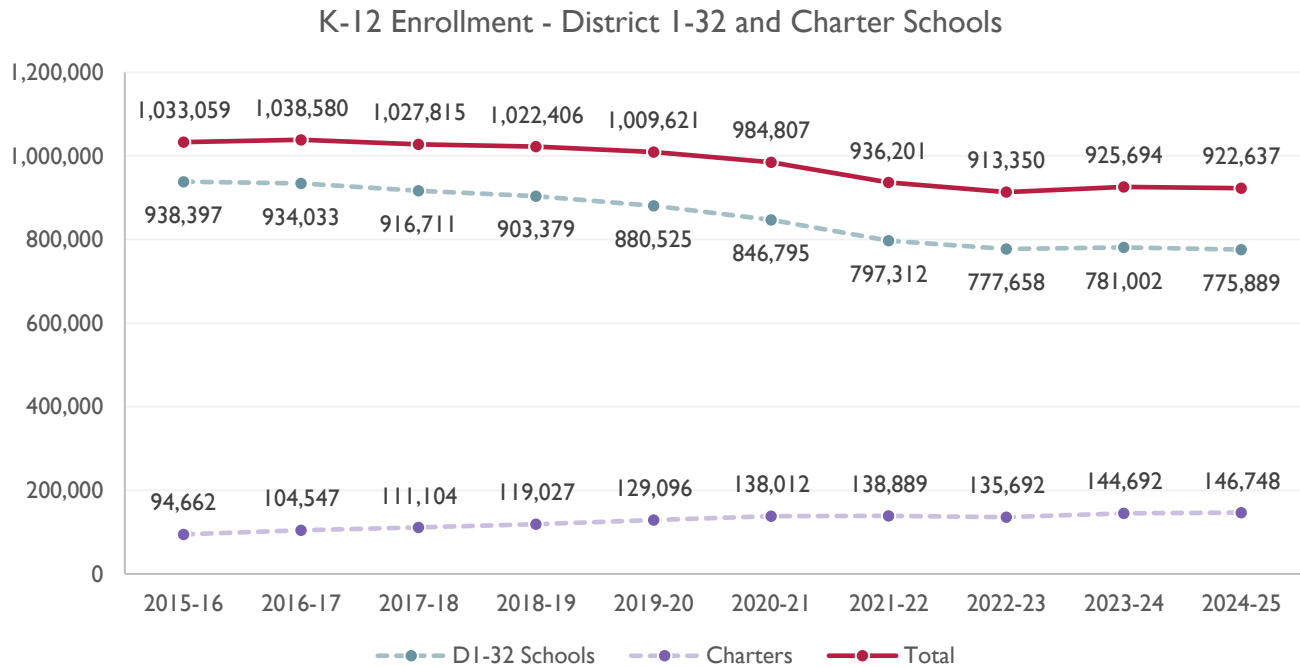
2026-2027 Strategic Planning Data Considerations

## Contents

Citywide Enrollment	I
District Enrollment	2
Residential Population and District Retention	3
District ES and MS Enrollment Model ("In-Out Model")	5
Articulation Trends	6
School Counts by Enrollment Range	7
Enrollment vs. Capacity	8
Building Utilization	8
District 75	9
District Demographics	10
Special Programs	10

## CITYWIDE ENROLLMENT (DISTRICT AND CHARTER), 2015-16 TO 2024-25

New York City Public Schools (NYCPS) is committed to thoughtful collaboration with districts and communities to collectively strengthen schools, support students and families, and respond to demographic and population changes in New York City.



Source: Audited Register and Charter Headcount; includes district and charter school enrollment only

- Enrollment in D1-32 schools decreased slightly in 2024-2025, remaining approximately stable compared to the steeper declines following the onset of the COVID-19 pandemic.
- Citywide, K-12 enrollment in District 1-32 schools and charter schools has declined by about 10% since its peak in the 2016-2017 school year.

## DISTRICT ENROLLMENT

District 3 Enrollment by Grade Level and Year (District Schools Only)

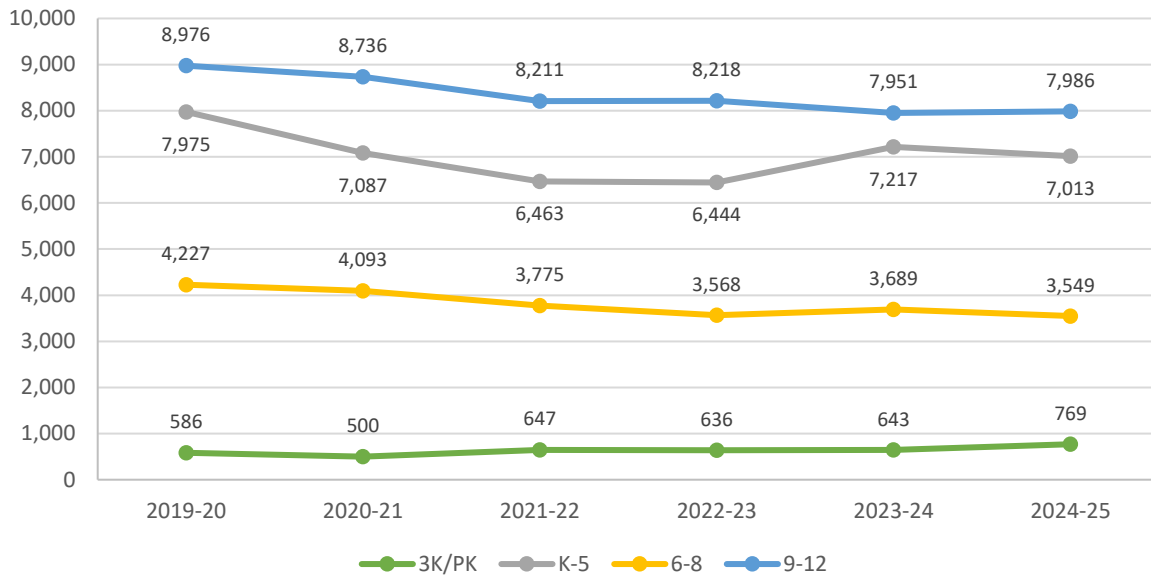


Table 1: District 3 Enrollment - 2019-20 to 2024-25

	2019-20	2020-21	2021-22	2022-23	2023-24	2024-25	1yr Change	5yr Change
<b>3K</b>	-	3	122	137	158	281	78%	-
<b>PK</b>	586	497	525	499	485	488	1%	-17%
<b>K-5</b>	7,975	7,087	6,463	6,444	7,217	7,013	-3%	-12%
<b>6-8</b>	4,227	4,093	3,775	3,568	3,689	3,549	-4%	-16%
<b>9-12</b>	8,976	8,736	8,211	8,218	7,951	7,986	0%	-11%
<b>Total</b>	<b>21,764</b>	<b>20,416</b>	<b>19,096</b>	<b>18,866</b>	<b>19,500</b>	<b>19,317</b>	<b>-1%</b>	<b>-11%</b>
<b>% Change YoY</b>		-6.2%	-6.5%	-1.2%	3.4%	-0.9%		

Table 2: District 3 Entry Grade Enrollment - 2019-20 to 2024-25

	2019-20	2020-21	2021-22	2022-23	2023-24	2024-25	1yr Change	5yr Change
<b>K</b>	1,384	1,166	1,057	1,097	1,302	1,189	-8.7%	-14%
<b>6</b>	1,408	1,324	1,216	1,142	1,158	1,156	-0.2%	-18%
<b>9</b>	2,460	2,025	1,888	2,159	2,125	2,107	-0.8%	-14%

Source: Audited Register; includes enrollment in district schools only

## RESIDENTIAL POPULATION AND DISTRICT RETENTION

District 3 K-12 Enrollment vs. Residential Population

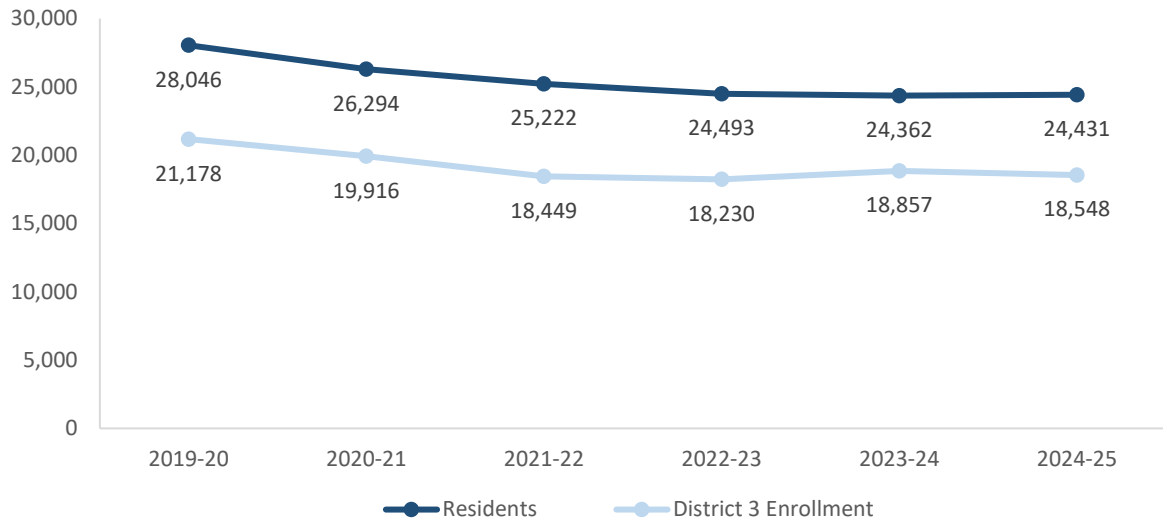


Table 3: District 3 Student Residential Population - 2019-20 to 2024-25

	2019-20	2020-21	2021-22	2022-23	2023-24	2024-25	1yr Change	5yr Change
<b>K-5</b>	13,115	11,797	11,043	10,602	10,598	10,554	0%	-20%
<b>6-8</b>	6,654	6,365	6,125	6,011	5,813	5,677	-2%	-15%
<b>9-12</b>	8,277	8,132	8,054	7,880	7,951	8,200	3%	-1%
<b>Total</b>	<b>28,046</b>	<b>26,294</b>	<b>25,222</b>	<b>24,493</b>	<b>24,362</b>	<b>24,431</b>	<b>0%</b>	<b>-13%</b>
<b>% Change YoY</b>		-6.2%	-4.1%	-2.9%	-0.5%	0.3%		

- Between 2019-20 and 2024-25, the K-5 residential population in District 3 declined by 20%.
- During this time, the 6-8 residential population in District 3 declined by 15%.
- Citywide, the K-12 residential population declined by 8% since 2019-20.

Source: Residential population is the sum of students attending any NYCPS school, charter or non-public school; as such, this metric will not capture students who are home schooled, have dropped out, or are otherwise not enrolled in these school options.

Table 4: Elementary School District Retention (Where District 3 Residents Enroll in School)

	2019-20	2020-21	2021-22	2022-23	2023-24	2024-25	% of Residents	
							2019-20	2024-25
District 3 Schools	6,261	5,485	5,010	4,971	5,129	5,057	48%	48%
Other District Schools	478	453	389	412	466	511	4%	5%
Charter Schools	1,561	1,421	1,260	1,156	1,100	969	12%	9%
Non-Public Schools	4,686	4,311	4,276	3,942	3,782	3,888	36%	37%
Other	129	127	108	121	121	129	1%	1%
<b>Total</b>	<b>13,115</b>	<b>11,797</b>	<b>11,043</b>	<b>10,602</b>	<b>10,598</b>	<b>10,554</b>	<b>100%</b>	<b>100%</b>
% Change YoY		-10.0%	-6.4%	-4.0%	0.0%	-0.4%		

Table 5: Middle School District Retention (Where District 3 Residents Enroll in School)

	2019-20	2020-21	2021-22	2022-23	2023-24	2024-25	% of Residents	
							2019-20	2024-25
District 3 Schools	2,784	2,726	2,580	2,462	2,374	2,270	42%	40%
Other District Schools	317	323	299	299	294	298	5%	5%
Charter Schools	546	571	552	534	539	493	8%	9%
Non-Public Schools	2,942	2,686	2,635	2,665	2,537	2,547	44%	45%
Other	65	59	59	51	69	69	1%	1%
<b>Total</b>	<b>6,654</b>	<b>6,365</b>	<b>6,125</b>	<b>6,011</b>	<b>5,813</b>	<b>5,677</b>	<b>100%</b>	<b>100%</b>
% Change YoY		-4.3%	-3.8%	-1.9%	-3.3%	-2.3%		

Table 6: Where District 3 Students Live - Grades K-5

	K-5		% of Students	
	2019-20	2024-25	2019-20	2024-25
District 3	6,261	5,057	79%	72%
Other District	1,714	1,956	21%	28%
	7,975	7,013	100%	100%

Table 7: Where District 3 Students Live - Grades 6-8

	6-8		% of Students	
	2019-20	2024-25	2019-20	2024-25
District 3	2,784	2,270	66%	64%
Other District	1,443	1,279	34%	36%
	4,227	3,549	100%	100%

### Citywide Trends

- Citywide, the average **District Retention Rate** (the percent of students living in a district who enroll in a district school in that district ) is 54% for ES and 49% for MS.
- Citywide, the average **District Enrollment Rate** (the percent of students enrolled in district schools who live in that district) is 83% for ES and 79% for MS.

Source: Audited Register for NYCPS and charter schools; NYCPS administrative data for non-public schools

## DISTRICT ES AND MS ENROLLMENT MODEL ("IN-OUT MODEL")

The table below depicts the prevailing trends for students coming into the district ("IN") and leaving the district ("OUT") to help identify the primary drivers of district school enrollment change.

**Table 8: In-Out Model - ES and MS**

	ES			MS		
	2019-20	2024-25	% Chg	2019-20	2024-25	% Chg
<b>Residents of District 3</b>	<b>13,115</b>	<b>10,554</b>	<b>-20%</b>	<b>6,654</b>	<b>5,677</b>	<b>-15%</b>
- OUT to other districts	-478	-511	7%	-317	-298	-6%
- OUT to D75/D79	-129	-129	0%	-65	-69	6%
- OUT to charters	-1,561	-969	-38%	-546	-493	-10%
- OUT to Non-Public Schools	-4,686	-3,888	-17%	-2,942	-2,547	-13%
<b>Total OUT</b>	<b>-6,854</b>	<b>-5,497</b>	<b>-20%</b>	<b>-3,870</b>	<b>-3,407</b>	<b>-12%</b>
<b>+ IN from other districts</b>	<b>+1,714</b>	<b>+1,956</b>	<b>14%</b>	<b>+1,443</b>	<b>+1,279</b>	<b>-11%</b>
<b>D3 Enrollment</b>	<b>7,975</b>	<b>7,013</b>	<b>-12%</b>	<b>4,227</b>	<b>3,549</b>	<b>-16%</b>

*Source: Audited Register for NYCPS and charter schools; NYCPS administrative data for non-public schools*

### Students Leaving the District:

- At the elementary school level, the largest number of students leaving District 3 enroll in non-public schools. Since 2019-20, this number has decreased by 17%, as compared to the overall number of elementary school-aged residents, which has decreased by 20%.
- At the middle school level, the largest number of students leaving District 3 enroll in non-public schools. Since 2019-20, this number has decreased by 13%, as compared to the overall number of middle school-aged residents, which has decreased by 15%.

### Students Coming into the District:

- At the elementary school level, a greater number of students living in other districts come into District 3 schools (1,956) than District 3 residents who leave for other district schools (511).
- At the middle school level, a greater number of students living in other districts come into District 3 schools (1,279) than District 3 residents who leave for other district schools (298).

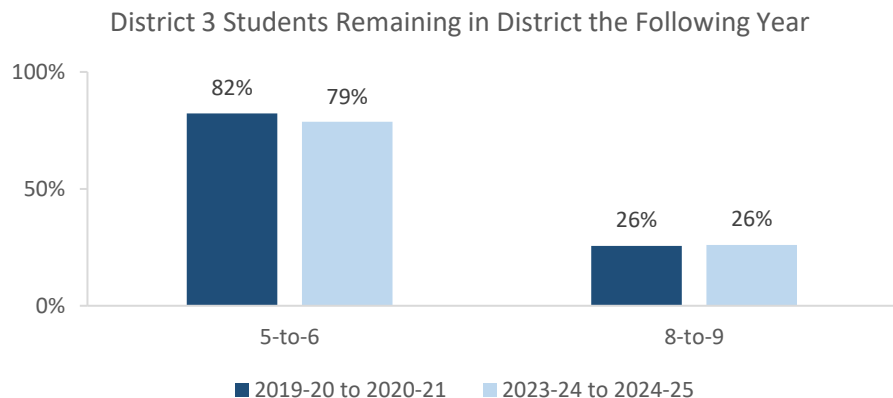
## ARTICULATION TRENDS

Table 9: 5-to-6 Articulation (Where District 3 5th Graders Enrolled the Following Year)

	2019-20 to 2020-21		2023-24 to 2024-25	
	#	%	#	%
District 3 Schools	1,107	82%	902	79%
Other District Schools	61	5%	76	7%
D75 Schools	1	0%	2	0%
D79 Schools	0	0%	0	0%
Charter Schools	21	2%	32	3%
Non-Public Schools	58	4%	51	4%
Out of NYC	87	6%	73	6%
Other	10	1%	11	1%
<b>Total</b>	<b>1,345</b>	<b>100%</b>	<b>1,147</b>	<b>100%</b>

Table 10: 8-to-9 Articulation (Where District 3 8th Graders Enrolled the Following Year)

	2019-20 to 2020-21		2023-24 to 2024-25	
	#	%	#	%
District 3 Schools	350	26%	336	26%
Other District Schools	801	59%	755	59%
D75 Schools	0	0%	1	0%
D79 Schools	4	0%	1	0%
Charter Schools	23	2%	23	2%
Non-Public Schools	109	8%	95	7%
Out of NYC	62	5%	61	5%
Other	16	1%	17	1%
<b>Total</b>	<b>1,365</b>	<b>100%</b>	<b>1,289</b>	<b>100%</b>



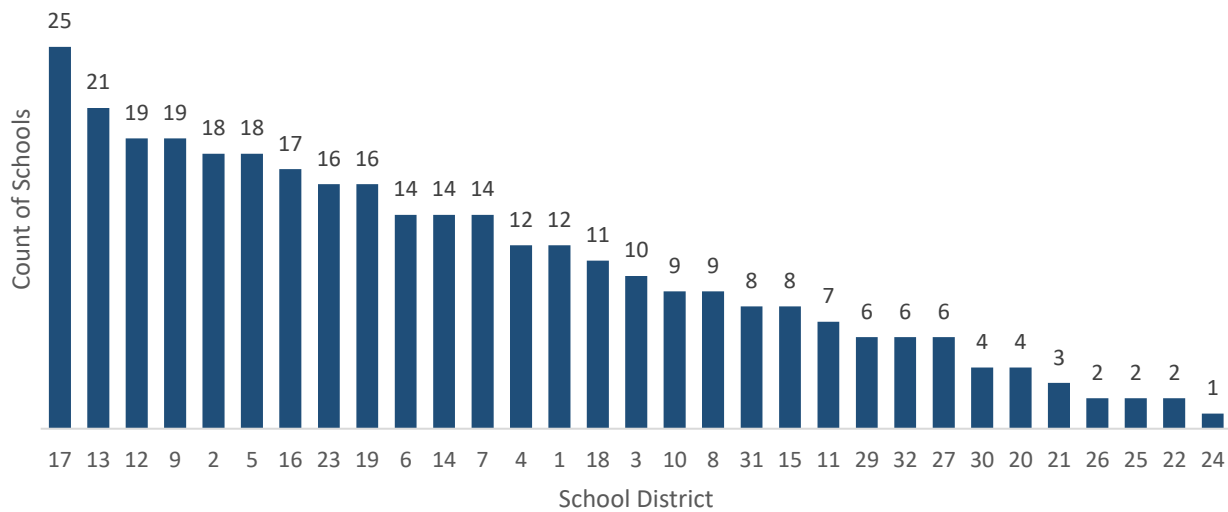
- Citywide, the average percent of graduating 5th graders who remain at a district school in the same district for 6th grade is 73%; for graduating 8th graders, the average percent of students who remain in the same district for 9th grade is 37%.

## SCHOOL COUNTS BY ENROLLMENT RANGE

Table 11: District 3 School Counts by Enrollment Range

Enrollment Range	School Level							
	ECC	ES	MS	HS	K-8	6-12	K-12	Total
Less than 150	0	2	1	1	0	0	0	4
150-249	0	1	4	0	2	0	0	7
250-349	0	1	0	2	1	2	1	7
350-449	0	3	2	4	2	1	0	12
450-549	0	2	0	1	1	0	0	4
550+	0	4	1	2	0	1	0	8
<i>Total</i>	0	13	8	10	6	4	1	42

Number of Schools with Enrollment in Bottom 25% by School District - 2024-25



Source: Audited Register; includes district schools only; excludes pre-K centers and transfer schools.

## ENROLLMENT VS. CAPACITY

Table 12: District 3 Enrollment vs. Capacity - Grades K-5

	Neighborhood(s)	Count of Schools	Enrollment	Capacity	Seat Excess / (Deficit)
<b>District 3</b>	<b>N/A</b>	<b>21</b>	<b>7,013</b>	<b>8,016</b>	<b>1,003</b>
Sub-District 1	Upper West Side	15	6,084	6,598	514
Sub-District 2	West Harlem	6	929	1,418	489

Table 13: District 3 Enrollment vs. Capacity - Grades 6-8

	Neighborhood(s)	Count of Schools	Enrollment	Capacity	Seat Excess / (Deficit)
<b>District 3</b>	<b>N/A</b>	<b>19</b>	<b>3,549</b>	<b>4,558</b>	<b>1,009</b>
Sub-District 1	Upper West Side	14	3,191	3,963	772
Sub-District 2	West Harlem	5	358	595	237

Source: Enrollment from 2024-25 Audited Register and grade-level capacity estimated from 2023-24 Blue Book; does not include new or planned capacity in 2024-25 and beyond.

## BUILDING UTILIZATION

Each year, the SCA publishes the Blue Book, a report analyzing the capacity and enrollment for every NYCPS building across the city. "Under-Utilized Buildings" reflects the projected count of buildings that have at least 150 excess seats.

Table 14: Count of NYCPS Buildings by Utilization Status

	District 3	Manhattan
<b>Count of Buildings</b>	<b>35</b>	<b>278</b>
<b>Under-Utilized (UU) Buildings</b>	<b>17</b>	<b>113</b>
150-299 Excess Seats	10	58
300+ Excess Seats	7	55
<b>Over-Utilized Buildings</b>	<b>6</b>	<b>41</b>

Source: Enrollment and capacity from 2023-24 Blue Book; UU status is from a preliminary 2024-25 UU analysis, and accounts for building enrollment and planning changes implemented in 2024-25 and after.

## DISTRICT 75

NYCPS's District 75 provides specialized instructional support for students with significant challenges, such as Autism Spectrum Disorder (ASD), significant cognitive delays, emotional disability, sensory impairment, and multiple disabilities. District 75 serves students through a number of different program models.

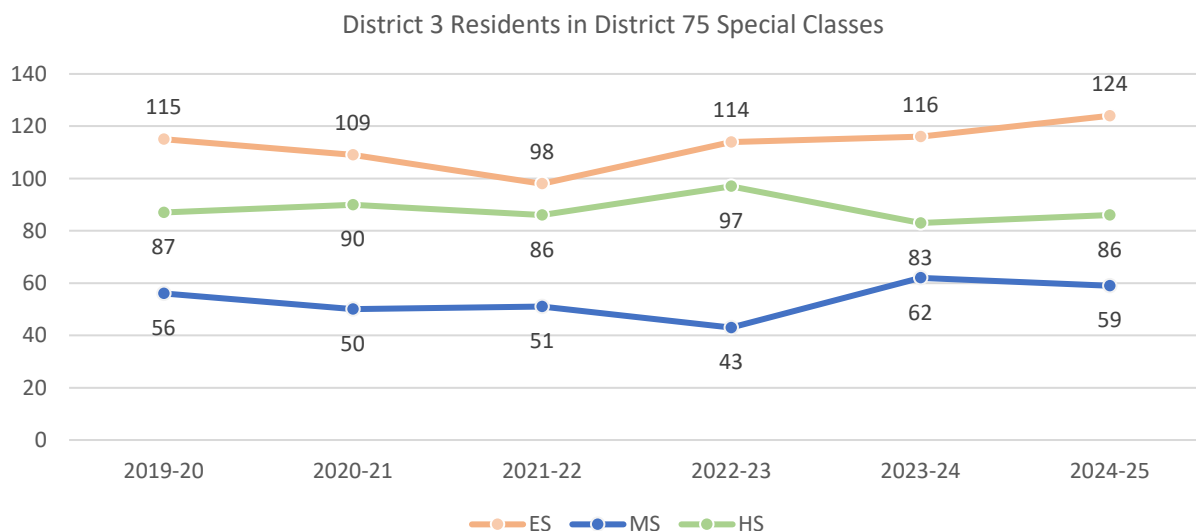
- Most District 75 students attend Special Class programs, which operate as distinct schools and may be located in standalone sites or co-located with district schools.
- A smaller number of students attend Inclusion Programs, in which students receive District 75 services within general education classes at a district school partner.

Table 15: District 75 Seat Need

	ES			MS			HS		
	District	Borough	City	District	Borough	City	District	Borough	City
<b>Capacity</b>	296	1,482	14,094	88	610	5,380	0	1,250	9,584
<b>Residents</b>	124	1,240	12,790	59	472	4,515	86	881	8,684
<b>Deficit</b>	No Deficit	No Deficit	No Deficit	No Deficit	No Deficit	No Deficit	-86	No Deficit	No Deficit

Table 16: District 75 Residential Growth

	2019-20	2020-21	2021-22	2022-23	2023-24	2024-25	5yr Change	1yr Change
<b>ES</b>	115	109	98	114	116	124	7%	8%
<b>MS</b>	56	50	51	43	62	59	-5%	5%
<b>HS</b>	87	90	86	97	83	86	4%	-1%
<b>All Grades</b>	258	249	235	254	261	269	3%	4%



Source: Audited Register

## DISTRICT DEMOGRAPHICS

Table 17: Ethnicity

	K-5			6-8			9-12		
	District	Borough	City	District	Borough	City	District	Borough	City
% Asian	8%	11%	17%	6%	10%	17%	10%	13%	16%
% Hispanic	33%	45%	42%	36%	48%	44%	40%	48%	44%
% Black	22%	19%	22%	27%	21%	23%	21%	22%	24%
% White	30%	19%	15%	25%	16%	13%	22%	13%	12%
% Other	7%	5%	4%	6%	5%	3%	6%	4%	3%

Table 18: Special Populations

	K-5			6-8			9-12		
	District	Borough	City	District	Borough	City	District	Borough	City
Students with Disabilities	21%	23%	21%	25%	25%	21%	21%	19%	19%
English Language Learners	14%	18%	22%	10%	13%	15%	6%	12%	15%
Economically Disadvantaged	51%	64%	76%	58%	69%	77%	62%	73%	77%
Students in Temporary Housing	14%	15%	12%	13%	15%	12%	7%	13%	11%

Source: 2024-25 Audited Register; includes charter schools located in the district and may differ slightly from the NYCPS Demographic Snapshot.

## SPECIAL PROGRAMS

Table 19: District 3 Special Program Summary

	District 3	Manhattan
Schools with ASD Programs	3	21
<i>Horizon</i>	1	8
<i>Nest</i>	3	14
Schools with G&T Programs	5	26
Schools with Bilingual Ed Programs	12	72
<i>Dual Language (DL)</i>	10	39
<i>Transitional Bilingual Education (TBE)</i>	1	12
<i>DL/TBE</i>	1	21

Note: Schools with both *Horizon* and *Nest* programs are counted once in the top row but separately in the *Horizon* and *Nest* rows beneath.

