

District 30

Data Summary

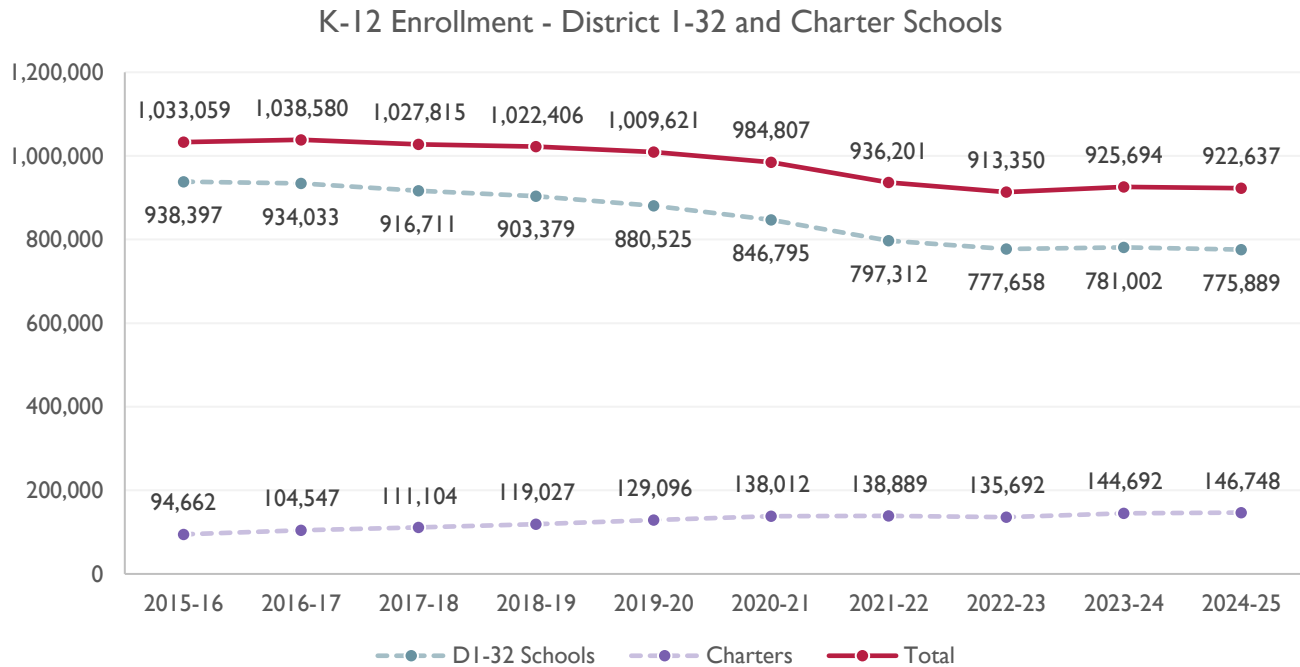
2026-2027 Strategic Planning Data Considerations

Contents

Citywide Enrollment	I
District Enrollment	2
Residential Population and District Retention	3
District ES and MS Enrollment Model ("In-Out Model")	5
Articulation Trends	6
School Counts by Enrollment Range	7
Enrollment vs. Capacity	8
Building Utilization	8
District 75	9
District Demographics	10
Special Programs	10

CITYWIDE ENROLLMENT (DISTRICT AND CHARTER), 2015-16 TO 2024-25

New York City Public Schools (NYCPS) is committed to thoughtful collaboration with districts and communities to collectively strengthen schools, support students and families, and respond to demographic and population changes in New York City.



Source: Audited Register and Charter Headcount; includes district and charter school enrollment only

- Enrollment in D1-32 schools decreased slightly in 2024-2025, remaining approximately stable compared to the steeper declines following the onset of the COVID-19 pandemic.
- Citywide, K-12 enrollment in District 1-32 schools and charter schools has declined by about 10% since its peak in the 2016-2017 school year.

DISTRICT ENROLLMENT

District 30 Enrollment by Grade Level and Year (District Schools Only)

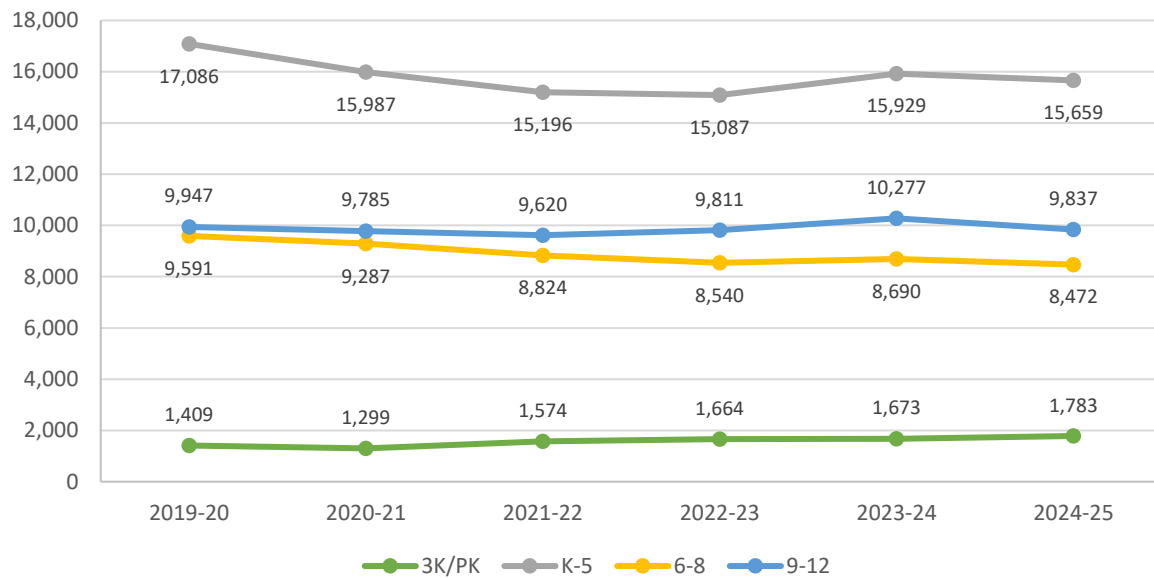


Table 1: District 30 Enrollment - 2019-20 to 2024-25

	2019-20	2020-21	2021-22	2022-23	2023-24	2024-25	1yr Change	5yr Change
3K	-	5	294	355	330	464	41%	-
PK	1,409	1,294	1,280	1,309	1,343	1,319	-2%	-6%
K-5	17,086	15,987	15,196	15,087	15,929	15,659	-2%	-8%
6-8	9,591	9,287	8,824	8,540	8,690	8,472	-3%	-12%
9-12	9,947	9,785	9,620	9,811	10,277	9,837	-4%	-1%
Total	38,033	36,358	35,214	35,102	36,569	35,751	-2%	-6%
% Change YoY		-4.4%	-3.1%	-0.3%	4.2%	-2.2%		

Table 2: District 30 Entry Grade Enrollment - 2019-20 to 2024-25

	2019-20	2020-21	2021-22	2022-23	2023-24	2024-25	1yr Change	5yr Change
K	2,912	2,550	2,564	2,480	2,656	2,613	-1.6%	-10%
6	3,272	3,061	2,999	2,781	2,922	2,803	-4.1%	-14%
9	2,770	2,832	2,715	2,833	3,237	3,061	-5.4%	11%

Source: Audited Register; includes enrollment in district schools only

RESIDENTIAL POPULATION AND DISTRICT RETENTION

District 30 K-12 Enrollment vs. Residential Population

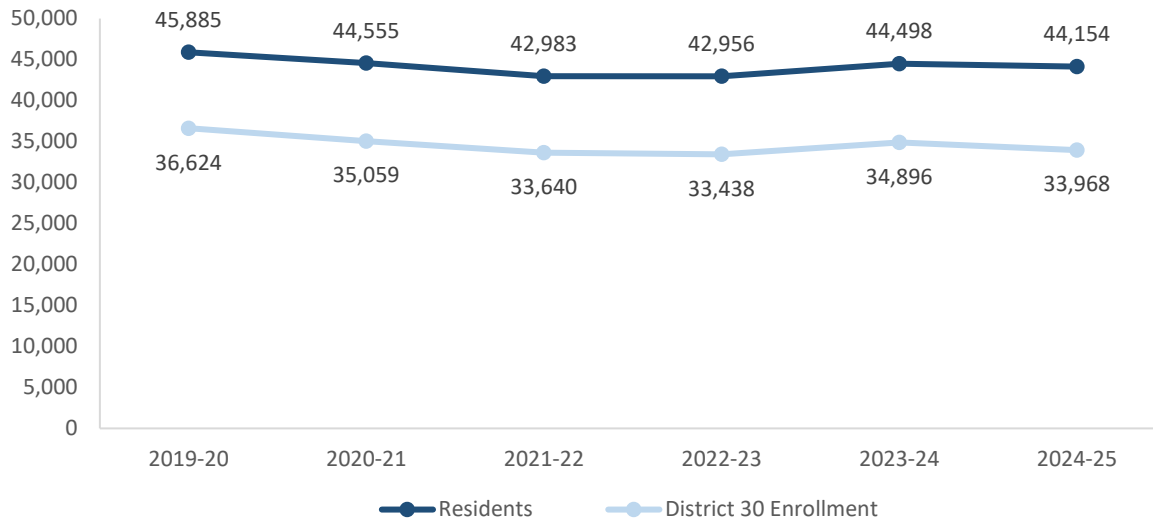


Table 3: District 30 Student Residential Population - 2019-20 to 2024-25

	2019-20	2020-21	2021-22	2022-23	2023-24	2024-25	1yr Change	5yr Change
K-5	20,975	19,937	18,930	18,833	19,769	19,510	-1%	-7%
6-8	10,736	10,421	9,975	9,699	9,970	9,736	-2%	-9%
9-12	14,174	14,197	14,078	14,424	14,759	14,908	1%	5%
Total	45,885	44,555	42,983	42,956	44,498	44,154	-1%	-4%
% Change YoY		-2.9%	-3.5%	-0.1%	3.6%	-0.8%		

- Between 2019-20 and 2024-25, the K-5 residential population in District 30 declined by 7%.
- During this time, the 6-8 residential population in District 30 declined by 9%.
- Citywide, the K-12 residential population declined by 8% since 2019-20.

Source: Residential population is the sum of students attending any NYCPS school, charter or non-public school; as such, this metric will not capture students who are home schooled, have dropped out, or are otherwise not enrolled in these school options.

Table 4: Elementary School District Retention (Where District 30 Residents Enroll in School)

	2019-20	2020-21	2021-22	2022-23	2023-24	2024-25	% of Residents	
							2019-20	2024-25
District 30 Schools	15,916	14,764	14,092	13,967	14,769	14,415	76%	74%
Other District Schools	1,054	1,065	955	936	1,066	1,165	5%	6%
Charter Schools	2,035	2,116	1,974	2,083	2,191	2,105	10%	11%
Non-Public Schools	1,544	1,560	1,528	1,456	1,321	1,334	7%	7%
Other	426	432	381	391	422	491	2%	3%
Total	20,975	19,937	18,930	18,833	19,769	19,510	100%	100%
% Change YoY		-4.9%	-5.1%	-0.5%	5.0%	-1.3%		

Table 5: Middle School District Retention (Where District 30 Residents Enroll in School)

	2019-20	2020-21	2021-22	2022-23	2023-24	2024-25	% of Residents	
							2019-20	2024-25
District 30 Schools	7,626	7,344	6,909	6,709	6,869	6,731	71%	69%
Other District Schools	1,064	984	982	945	995	917	10%	9%
Charter Schools	913	1,044	1,049	1,078	1,149	1,144	9%	12%
Non-Public Schools	967	875	844	793	776	775	9%	8%
Other	166	174	191	174	181	169	2%	2%
Total	10,736	10,421	9,975	9,699	9,970	9,736	100%	100%
% Change YoY		-2.9%	-4.3%	-2.8%	2.8%	-2.3%		

Table 6: Where District 30 Students Live - Grades K-5

	K-5		% of Students	
	2019-20	2024-25	2019-20	2024-25
District 30	15,916	14,415	93%	92%
Other District	1,170	1,244	7%	8%
	17,086	15,659	100%	100%

Table 7: Where District 30 Students Live - Grades 6-8

	6-8		% of Students	
	2019-20	2024-25	2019-20	2024-25
District 30	7,626	6,731	80%	79%
Other District	1,965	1,741	20%	21%
	9,591	8,472	100%	100%

Citywide Trends

- Citywide, the average **District Retention Rate** (the percent of students living in a district who enroll in a district school in that district) is 54% for ES and 49% for MS.
- Citywide, the average **District Enrollment Rate** (the percent of students enrolled in district schools who live in that district) is 83% for ES and 79% for MS.

Source: Audited Register for NYCPS and charter schools; NYCPS administrative data for non-public schools

DISTRICT ES AND MS ENROLLMENT MODEL ("IN-OUT MODEL")

The table below depicts the prevailing trends for students coming into the district ("IN") and leaving the district ("OUT") to help identify the primary drivers of district school enrollment change.

Table 8: In-Out Model - ES and MS

	ES			MS		
	2019-20	2024-25	% Chg	2019-20	2024-25	% Chg
Residents of District 30	20,975	19,510	-7%	10,736	9,736	-9%
- OUT to other districts	-1,054	-1,165	11%	-1,064	-917	-14%
- OUT to D75/D79	-426	-491	15%	-166	-169	2%
- OUT to charters	-2,035	-2,105	3%	-913	-1,144	25%
- OUT to Non-Public Schools	-1,544	-1,334	-14%	-967	-775	-20%
Total OUT	-5,059	-5,095	1%	-3,110	-3,005	-3%
+ IN from other districts	+1,170	+1,244	6%	+1,965	+1,741	-11%
D30 Enrollment	17,086	15,659	-8%	9,591	8,472	-12%

Source: Audited Register for NYCPS and charter schools; NYCPS administrative data for non-public schools

Students Leaving the District:

- At the elementary school level, the largest number of students leaving District 30 enroll in charter schools. Since 2019-20, this number has grown by 3%, as compared to the overall number of elementary school-aged residents, which has decreased by 7%.
- At the middle school level, the largest number of students leaving District 30 enroll in charter schools. Since 2019-20, this number has grown by 25%, as compared to the overall number of middle school-aged residents, which has decreased by 9%.

Students Coming into the District:

- At the elementary school level, about the same number of students living in other districts come into District 30 schools (1,244) as District 30 residents who leave for other district schools (1,165).
- At the middle school level, a greater number of students living in other districts come into District 30 schools (1,741) than District 30 residents who leave for other district schools (917).

ARTICULATION TRENDS

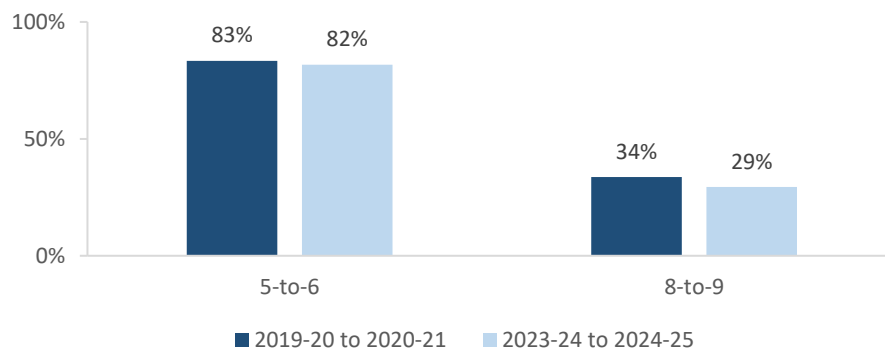
Table 9: 5-to-6 Articulation (Where District 30 5th Graders Enrolled the Following Year)

	2019-20 to 2020-21		2023-24 to 2024-25	
	#	%	#	%
District 30 Schools	2,438	83%	2,167	82%
Other District Schools	220	8%	188	7%
D75 Schools	3	0%	1	0%
D79 Schools	0	0%	0	0%
Charter Schools	87	3%	75	3%
Non-Public Schools	26	1%	45	2%
Out of NYC	108	4%	141	5%
Other	41	1%	35	1%
Total	2,923	100%	2,652	100%

Table 10: 8-to-9 Articulation (Where District 30 8th Graders Enrolled the Following Year)

	2019-20 to 2020-21		2023-24 to 2024-25	
	#	%	#	%
District 30 Schools	1,049	34%	873	29%
Other District Schools	1,868	60%	1,790	60%
D75 Schools	2	0%	1	0%
D79 Schools	1	0%	1	0%
Charter Schools	14	0%	29	1%
Non-Public Schools	79	3%	116	4%
Out of NYC	74	2%	142	5%
Other	33	1%	15	1%
Total	3,120	100%	2,967	100%

District 30 Students Remaining in District the Following Year



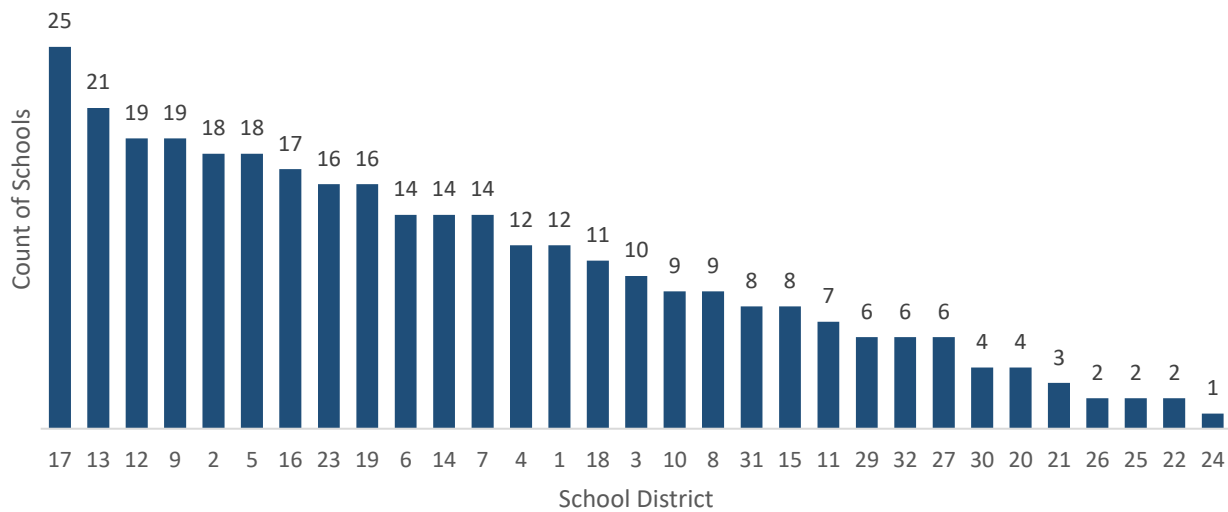
- Citywide, the average percent of graduating 5th graders who remain at a district school in the same district for 6th grade is 73%; for graduating 8th graders, the average percent of students who remain in the same district for 9th grade is 37%.

SCHOOL COUNTS BY ENROLLMENT RANGE

Table 11: District 30 School Counts by Enrollment Range

Enrollment Range	School Level							
	ECC	ES	MS	HS	K-8	6-12	K-12	Total
Less than 150	0	0	1	0	0	0	0	1
150-249	2	0	0	1	0	0	0	3
250-349	0	3	1	1	0	0	0	5
350-449	0	6	3	0	0	0	0	9
450-549	0	6	0	2	2	1	0	11
550+	0	9	5	6	3	1	0	24
<i>Total</i>	2	24	10	10	5	2	0	53

Number of Schools with Enrollment in Bottom 25% by School District - 2024-25



Source: Audited Register; includes district schools only; excludes pre-K centers and transfer schools.

ENROLLMENT VS. CAPACITY

Table 12: District 30 Enrollment vs. Capacity - Grades K-5

	Neighborhood(s)	Count of Schools	Enrollment	Capacity	Seat Excess / (Deficit)
District 30	N/A	32	15,659	16,886	1,227
Sub-District 1	East Elmhurst , Jackson Hts	12	5,732	5,826	94
Sub-District 2	Woodside , Sunnyside	8	4,447	5,713	1,266
Sub-District 3	LIC , Ravenswood	8	3,403	3,310	(93)
Sub-District 4	Astoria , Steinway	4	2,077	2,037	-40

Table 13: District 30 Enrollment vs. Capacity - Grades 6-8

	Neighborhood(s)	Count of Schools	Enrollment	Capacity	Seat Excess / (Deficit)
District 30	N/A	18	8,472	10,923	2,451
Sub-District 1	East Elmhurst , Jackson Hts	4	4,128	4,470	342
Sub-District 2	Woodside , Sunnyside	4	1,040	1,931	891
Sub-District 3	LIC , Ravenswood	8	1,992	2,933	941
Sub-District 4	Astoria , Steinway	2	1,312	1,589	277

Source: Enrollment from 2024-25 Audited Register and grade-level capacity estimated from 2023-24 Blue Book; does not include new or planned capacity in 2024-25 and beyond.

BUILDING UTILIZATION

Each year, the SCA publishes the Blue Book, a report analyzing the capacity and enrollment for every NYCPS building across the city. "Under-Utilized Buildings" reflects the projected count of buildings that have at least 150 excess seats.

Table 14: Count of NYCPS Buildings by Utilization Status

	District 30	Queens
Count of Buildings	65	405
Under-Utilized (UU) Buildings	18	84
150-299 Excess Seats	8	46
300+ Excess Seats	10	38
Over-Utilized Buildings	19	148

Source: Enrollment and capacity from 2023-24 Blue Book; UU status is from a preliminary 2024-25 UU analysis, and accounts for building enrollment and planning changes implemented in 2024-25 and after.

DISTRICT 75

NYCPS's District 75 provides specialized instructional support for students with significant challenges, such as Autism Spectrum Disorder (ASD), significant cognitive delays, emotional disability, sensory impairment, and multiple disabilities. District 75 serves students through a number of different program models.

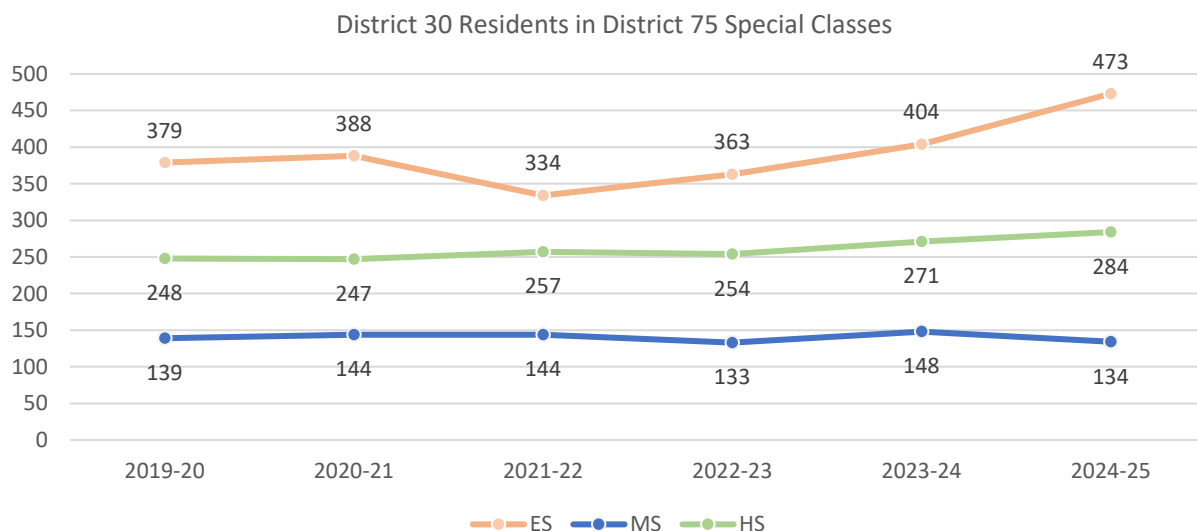
- Most District 75 students attend Special Class programs, which operate as distinct schools and may be located in standalone sites or co-located with district schools.
- A smaller number of students attend Inclusion Programs, in which students receive District 75 services within general education classes at a district school partner.

Table 15: District 75 Seat Need

	ES			MS			HS		
	District	Borough	City	District	Borough	City	District	Borough	City
Capacity	482	4,172	14,094	52	1,412	5,380	320	2,426	9,584
Residents	473	3,786	12,790	134	1,231	4,515	284	2,286	8,684
Deficit	No Deficit	No Deficit	No Deficit	-82	No Deficit	No Deficit	No Deficit	No Deficit	No Deficit

Table 16: District 75 Residential Growth

	2019-20	2020-21	2021-22	2022-23	2023-24	2024-25	5yr Change	1yr Change
ES	379	388	334	363	404	473	17%	25%
MS	139	144	144	133	148	134	-9%	-4%
HS	248	247	257	254	271	284	5%	15%
All Grades	766	779	735	750	823	891	8%	16%



Source: Audited Register

DISTRICT DEMOGRAPHICS

Table 17: Ethnicity

	K-5			6-8			9-12		
	District	Borough	City	District	Borough	City	District	Borough	City
% Asian	19%	28%	17%	19%	28%	17%	15%	26%	16%
% Hispanic	53%	42%	42%	55%	43%	44%	59%	44%	44%
% Black	6%	15%	22%	7%	15%	23%	7%	17%	24%
% White	19%	11%	15%	16%	10%	13%	15%	9%	12%
% Other	4%	5%	4%	3%	4%	3%	4%	4%	3%

Table 18: Special Populations

	K-5			6-8			9-12		
	District	Borough	City	District	Borough	City	District	Borough	City
Students with Disabilities	17%	19%	21%	16%	18%	21%	16%	16%	19%
English Language Learners	30%	26%	22%	18%	17%	15%	22%	17%	15%
Economically Disadvantaged	70%	74%	76%	74%	74%	77%	76%	76%	77%
Students in Temporary Housing	15%	12%	12%	13%	12%	12%	15%	10%	11%

Source: 2024-25 Audited Register; includes charter schools located in the district and may differ slightly from the NYCPS Demographic Snapshot.

SPECIAL PROGRAMS

Table 19: District 30 Special Program Summary

	District 30	Queens
Schools with ASD Programs	4	30
<i>Horizon</i>	1	15
<i>Nest</i>	3	18
Schools with G&T Programs	8	39
Schools with Bilingual Ed Programs	23	86
<i>Dual Language (DL)</i>	12	35
<i>Transitional Bilingual Education (TBE)</i>	6	20
<i>DL/TBE</i>	5	31

Note: Schools with both *Horizon* and *Nest* programs are counted once in the top row but separately in the *Horizon* and *Nest* rows beneath.

