

District 32

Data Summary

2026-2027 Strategic Planning Data Considerations

Contents

Citywide Enrollment	I
District Enrollment	2
Residential Population and District Retention	3
District ES and MS Enrollment Model ("In-Out Model")	5
Articulation Trends	6
School Counts by Enrollment Range	7
Enrollment vs. Capacity	8
Building Utilization	8
District 75	9
District Demographics	10
Special Programs	10

CITYWIDE ENROLLMENT (DISTRICT AND CHARTER), 2015-16 TO 2024-25

New York City Public Schools (NYCPS) is committed to thoughtful collaboration with districts and communities to collectively strengthen schools, support students and families, and respond to demographic and population changes in New York City.



Source: Audited Register and Charter Headcount; includes district and charter school enrollment only

- Enrollment in D1-32 schools decreased slightly in 2024-2025, remaining approximately stable compared to the steeper declines following the onset of the COVID-19 pandemic.
- Citywide, K-12 enrollment in District 1-32 schools and charter schools has declined by about 10% since its peak in the 2016-2017 school year.

DISTRICT ENROLLMENT

District 32 Enrollment by Grade Level and Year (District Schools Only)

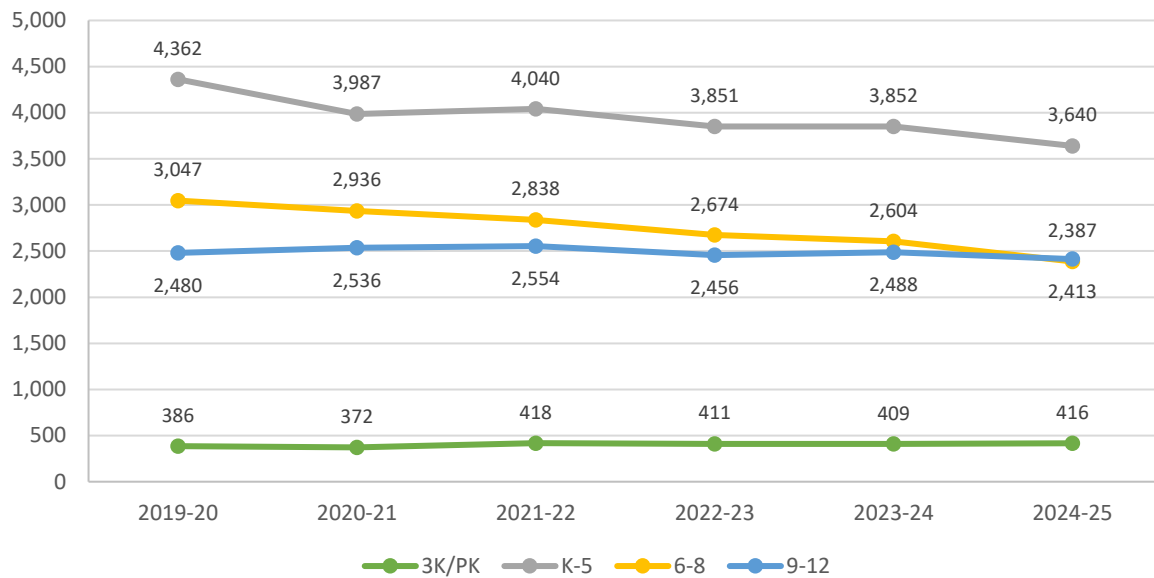


Table 1: District 32 Enrollment - 2019-20 to 2024-25

	2019-20	2020-21	2021-22	2022-23	2023-24	2024-25	1yr Change	5yr Change
3K	119	139	137	135	135	152	13%	28%
PK	267	233	281	276	274	264	-4%	-1%
K-5	4,362	3,987	4,040	3,851	3,852	3,640	-6%	-17%
6-8	3,047	2,936	2,838	2,674	2,604	2,387	-8%	-22%
9-12	2,480	2,536	2,554	2,456	2,488	2,413	-3%	-3%
Total	10,275	9,831	9,850	9,392	9,353	8,856	-5%	-14%
% Change YoY		-4.3%	0.2%	-4.6%	-0.4%	-5.3%		

Table 2: District 32 Entry Grade Enrollment - 2019-20 to 2024-25

	2019-20	2020-21	2021-22	2022-23	2023-24	2024-25	1yr Change	5yr Change
K	648	538	615	582	623	541	-13.2%	-17%
6	993	956	919	835	830	741	-10.7%	-25%
9	691	669	694	578	629	580	-7.8%	-16%

Source: Audited Register; includes enrollment in district schools only

RESIDENTIAL POPULATION AND DISTRICT RETENTION

District 32 K-12 Enrollment vs. Residential Population

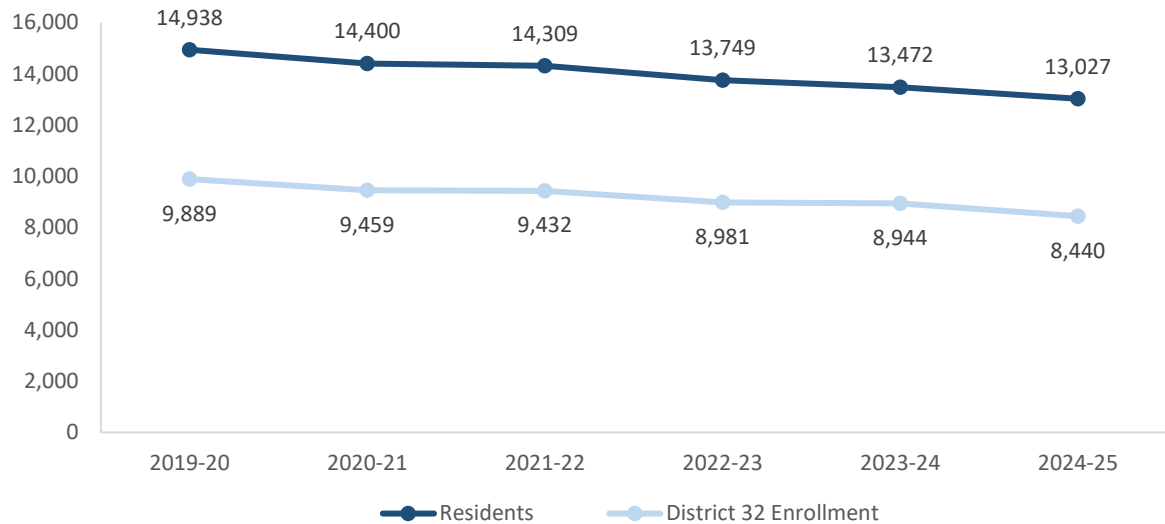


Table 3: District 32 Student Residential Population - 2019-20 to 2024-25

	2019-20	2020-21	2021-22	2022-23	2023-24	2024-25	1yr Change	5yr Change
K-5	6,527	6,126	6,090	5,766	5,627	5,418	-4%	-17%
6-8	3,479	3,367	3,280	3,195	3,150	2,949	-6%	-15%
9-12	4,932	4,907	4,939	4,788	4,695	4,660	-1%	-6%
Total	14,938	14,400	14,309	13,749	13,472	13,027	-3%	-13%
% Change YoY		-3.6%	-0.6%	-3.9%	-2.0%	-3.3%		

- Between 2019-20 and 2024-25, the K-5 residential population in District 32 declined by 17%.
- During this time, the 6-8 residential population in District 32 declined by 15%.
- Citywide, the K-12 residential population declined by 8% since 2019-20.

Source: Residential population is the sum of students attending any NYCPS school, charter or non-public school; as such, this metric will not capture students who are home schooled, have dropped out, or are otherwise not enrolled in these school options.

Table 4: Elementary School District Retention (Where District 32 Residents Enroll in School)

	2019-20	2020-21	2021-22	2022-23	2023-24	2024-25	% of Residents	
							2019-20	2024-25
District 32 Schools	3,570	3,178	3,276	3,098	2,976	2,718	55%	50%
Other District Schools	903	866	834	786	763	825	14%	15%
Charter Schools	1,745	1,781	1,675	1,577	1,584	1,575	27%	29%
Non-Public Schools	188	170	169	161	148	142	3%	3%
Other	121	131	136	144	156	158	2%	3%
Total	6,527	6,126	6,090	5,766	5,627	5,418	100%	100%
% Change YoY		-6.1%	-0.6%	-5.3%	-2.4%	-3.7%		

Table 5: Middle School District Retention (Where District 32 Residents Enroll in School)

	2019-20	2020-21	2021-22	2022-23	2023-24	2024-25	% of Residents	
							2019-20	2024-25
District 32 Schools	2,024	1,921	1,867	1,806	1,766	1,638	58%	56%
Other District Schools	577	538	459	438	433	402	17%	14%
Charter Schools	675	733	771	790	787	761	19%	26%
Non-Public Schools	146	121	115	103	104	100	4%	3%
Other	57	54	68	58	60	48	2%	2%
Total	3,479	3,367	3,280	3,195	3,150	2,949	100%	100%
% Change YoY		-3.2%	-2.6%	-2.6%	-1.4%	-6.4%		

Table 6: Where District 32 Students Live - Grades K-5

	K-5		% of Students	
	2019-20	2024-25	2019-20	2024-25
District 32	3,570	2,718	82%	75%
Other District	792	922	18%	25%
	4,362	3,640	100%	100%

Table 7: Where District 32 Students Live - Grades 6-8

	6-8		% of Students	
	2019-20	2024-25	2019-20	2024-25
District 32	2,024	1,638	66%	69%
Other District	1,023	749	34%	31%
	3,047	2,387	100%	100%

Citywide Trends

- Citywide, the average **District Retention Rate** (the percent of students living in a district who enroll in a district school in that district) is 54% for ES and 49% for MS.
- Citywide, the average **District Enrollment Rate** (the percent of students enrolled in district schools who live in that district) is 83% for ES and 79% for MS.

Source: Audited Register for NYCPS and charter schools; NYCPS administrative data for non-public schools

DISTRICT ES AND MS ENROLLMENT MODEL ("IN-OUT MODEL")

The table below depicts the prevailing trends for students coming into the district ("IN") and leaving the district ("OUT") to help identify the primary drivers of district school enrollment change.

Table 8: In-Out Model - ES and MS

	ES			MS		
	2019-20	2024-25	% Chg	2019-20	2024-25	% Chg
Residents of District 32	6,527	5,418	-17%	3,479	2,949	-15%
- OUT to other districts	-903	-825	-9%	-577	-402	-30%
- OUT to D75/D79	-121	-158	31%	-57	-48	-16%
- OUT to charters	-1,745	-1,575	-10%	-675	-761	13%
- OUT to Non-Public Schools	-188	-142	-24%	-146	-100	-32%
Total OUT	-2,957	-2,700	-9%	-1,455	-1,311	-10%
+ IN from other districts	+792	+922	16%	+1,023	+749	-27%
D32 Enrollment	4,362	3,640	-17%	3,047	2,387	-22%

Source: Audited Register for NYCPS and charter schools; NYCPS administrative data for non-public schools

Students Leaving the District:

- At the elementary school level, the largest number of students leaving District 32 enroll in charter schools. Since 2019-20, this number has decreased by 10%, as compared to the overall number of elementary school-aged residents, which has decreased by 17%.
- At the middle school level, the largest number of students leaving District 32 enroll in charter schools. Since 2019-20, this number has grown by 13%, as compared to the overall number of middle school-aged residents, which has decreased by 15%.

Students Coming into the District:

- At the elementary school level, a greater number of students living in other districts come into District 32 schools (922) than District 32 residents who leave for other district schools (825).
- At the middle school level, a greater number of students living in other districts come into District 32 schools (749) than District 32 residents who leave for other district schools (402).

ARTICULATION TRENDS

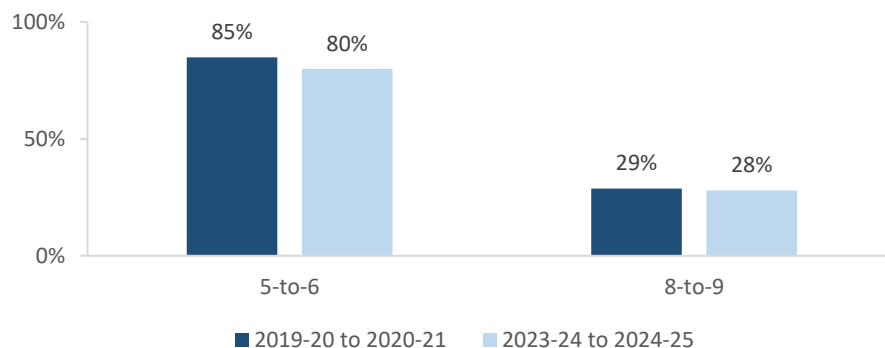
Table 9: 5-to-6 Articulation (Where District 32 5th Graders Enrolled the Following Year)

	2019-20 to 2020-21		2023-24 to 2024-25	
	#	%	#	%
District 32 Schools	737	85%	563	80%
Other District Schools	68	8%	82	12%
D75 Schools	1	0%	0	0%
D79 Schools	0	0%	0	0%
Charter Schools	31	4%	29	4%
Non-Public Schools	1	0%	3	0%
Out of NYC	21	2%	21	3%
Other	10	1%	7	1%
Total	869	100%	705	100%

Table 10: 8-to-9 Articulation (Where District 32 8th Graders Enrolled the Following Year)

	2019-20 to 2020-21		2023-24 to 2024-25	
	#	%	#	%
District 32 Schools	292	29%	258	28%
Other District Schools	613	60%	532	58%
D75 Schools	0	0%	2	0%
D79 Schools	0	0%	0	0%
Charter Schools	84	8%	93	10%
Non-Public Schools	6	1%	15	2%
Out of NYC	20	2%	20	2%
Other	2	0%	3	0%
Total	1,017	100%	923	100%

District 32 Students Remaining in District the Following Year



- Citywide, the average percent of graduating 5th graders who remain at a district school in the same district for 6th grade is 73%; for graduating 8th graders, the average percent of students who remain in the same district for 9th grade is 37%.

SCHOOL COUNTS BY ENROLLMENT RANGE

Table 11: District 32 School Counts by Enrollment Range

Enrollment Range	School Level							
	ECC	ES	MS	HS	K-8	6-12	K-12	Total
Less than 150	0	0	0	1	0	0	0	1
150-249	0	4	2	0	0	0	0	6
250-349	0	3	2	3	1	0	0	9
350-449	0	3	1	3	1	1	0	9
450-549	0	1	0	0	0	0	0	1
550+	0	0	1	0	0	0	0	1
<i>Total</i>	0	11	6	7	2	1	0	27

Number of Schools with Enrollment in Bottom 25% by School District - 2024-25



Source: Audited Register; includes district schools only; excludes pre-K centers and transfer schools.

ENROLLMENT VS. CAPACITY

Table 12: District 32 Enrollment vs. Capacity - Grades K-5

	Neighborhood(s)	Count of Schools	Enrollment	Capacity	Seat Excess / (Deficit)
District 32	N/A	13	3,640	6,826	3,186
Sub-District 1	Bushwick	8	2,009	4,224	2,215
Sub-District 2	Bushwick	5	1,631	2,602	971

Table 13: District 32 Enrollment vs. Capacity - Grades 6-8

	Neighborhood(s)	Count of Schools	Enrollment	Capacity	Seat Excess / (Deficit)
District 32	N/A	9	2,387	5,056	2,669
Sub-District 1	Bushwick	5	1,557	3,132	1,575
Sub-District 2	Bushwick	4	830	1,924	1,094

Source: Enrollment from 2024-25 Audited Register and grade-level capacity estimated from 2023-24 Blue Book; does not include new or planned capacity in 2024-25 and beyond.

BUILDING UTILIZATION

Each year, the SCA publishes the Blue Book, a report analyzing the capacity and enrollment for every NYCPS building across the city. "Under-Utilized Buildings" reflects the projected count of buildings that have at least 150 excess seats.

Table 14: Count of NYCPS Buildings by Utilization Status

	District 32	Brooklyn
Count of Buildings	27	489
Under-Utilized (UU) Buildings	16	196
150-299 Excess Seats	2	74
300+ Excess Seats	14	122
Over-Utilized Buildings	1	98

Source: Enrollment and capacity from 2023-24 Blue Book; UU status is from a preliminary 2024-25 UU analysis, and accounts for building enrollment and planning changes implemented in 2024-25 and after.

DISTRICT 75

NYCPS's District 75 provides specialized instructional support for students with significant challenges, such as Autism Spectrum Disorder (ASD), significant cognitive delays, emotional disability, sensory impairment, and multiple disabilities. District 75 serves students through a number of different program models.

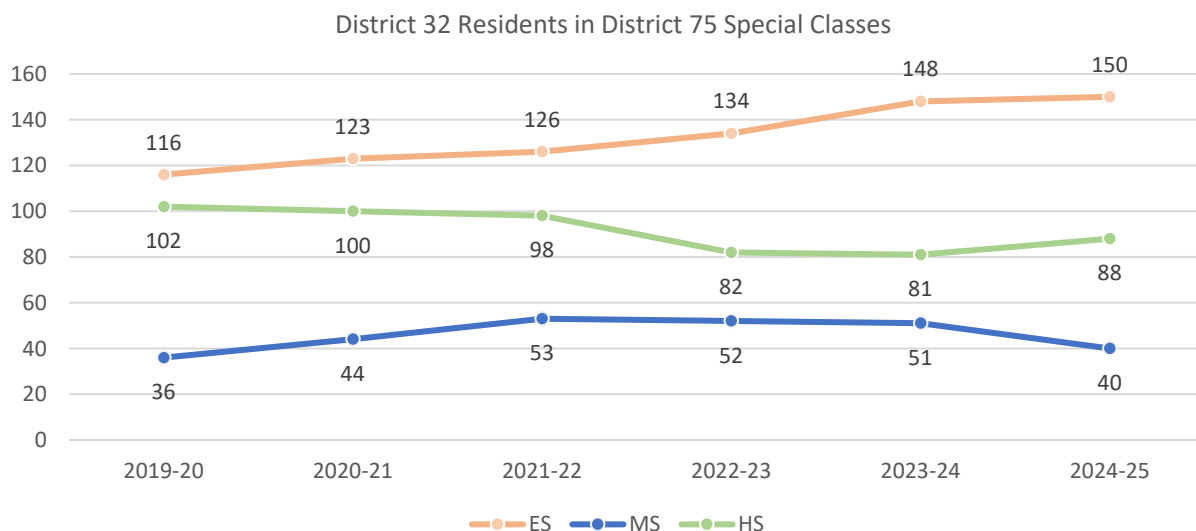
- Most District 75 students attend Special Class programs, which operate as distinct schools and may be located in standalone sites or co-located with district schools.
- A smaller number of students attend Inclusion Programs, in which students receive District 75 services within general education classes at a district school partner.

Table 15: District 75 Seat Need

	ES			MS			HS		
	District	Borough	City	District	Borough	City	District	Borough	City
Capacity	118	3,426	14,094	34	1,400	5,380	0	2,544	9,584
Residents	150	3,151	12,790	40	1,115	4,515	88	2,258	8,684
Deficit	-32	No Deficit	No Deficit	-6	No Deficit	No Deficit	-88	No Deficit	No Deficit

Table 16: District 75 Residential Growth

	2019-20	2020-21	2021-22	2022-23	2023-24	2024-25	5yr Change	1yr Change
ES	116	123	126	134	148	150	1%	29%
MS	36	44	53	52	51	40	-22%	11%
HS	102	100	98	82	81	88	9%	-14%
All Grades	254	267	277	268	280	278	-1%	9%



Source: Audited Register

DISTRICT DEMOGRAPHICS

Table 17: Ethnicity

	K-5			6-8			9-12		
	District	Borough	City	District	Borough	City	District	Borough	City
% Asian	1%	17%	17%	2%	18%	17%	2%	17%	16%
% Hispanic	83%	30%	42%	79%	31%	44%	73%	32%	44%
% Black	12%	29%	22%	15%	32%	23%	19%	33%	24%
% White	3%	20%	15%	2%	17%	13%	2%	15%	12%
% Other	1%	4%	4%	1%	3%	3%	3%	3%	3%

Table 18: Special Populations

	K-5			6-8			9-12		
	District	Borough	City	District	Borough	City	District	Borough	City
Students with Disabilities	21%	20%	21%	21%	21%	21%	18%	18%	19%
English Language Learners	40%	21%	22%	25%	14%	15%	23%	14%	15%
Economically Disadvantaged	89%	76%	76%	88%	79%	77%	89%	78%	77%
Students in Temporary Housing	24%	10%	12%	21%	11%	12%	17%	10%	11%

Source: 2024-25 Audited Register; includes charter schools located in the district and may differ slightly from the NYCPS Demographic Snapshot.

SPECIAL PROGRAMS

Table 19: District 32 Special Program Summary

	District 32	Brooklyn
Schools with ASD Programs	3	46
<i>Horizon</i>	2	19
<i>Nest</i>	1	28
Schools with G&T Programs	2	43
Schools with Bilingual Ed Programs	15	115
<i>Dual Language (DL)</i>	10	72
<i>Transitional Bilingual Education (TBE)</i>	1	10
<i>DL/TBE</i>	4	33

Note: Schools with both *Horizon* and *Nest* programs are counted once in the top row but separately in the *Horizon* and *Nest* rows beneath.

