

District 4

Data Summary

2026-2027 Strategic Planning Data Considerations

Contents

| | |
|--|----|
| Citywide Enrollment | I |
| District Enrollment | 2 |
| Residential Population and District Retention | 3 |
| District ES and MS Enrollment Model ("In-Out Model") | 5 |
| Articulation Trends | 6 |
| School Counts by Enrollment Range | 7 |
| Enrollment vs. Capacity | 8 |
| Building Utilization | 8 |
| District 75 | 9 |
| District Demographics | 10 |
| Special Programs | 10 |

CITYWIDE ENROLLMENT (DISTRICT AND CHARTER), 2015-16 TO 2024-25

New York City Public Schools (NYCPS) is committed to thoughtful collaboration with districts and communities to collectively strengthen schools, support students and families, and respond to demographic and population changes in New York City.



Source: Audited Register and Charter Headcount; includes district and charter school enrollment only

- Enrollment in D1-32 schools decreased slightly in 2024-2025, remaining approximately stable compared to the steeper declines following the onset of the COVID-19 pandemic.
- Citywide, K-12 enrollment in District 1-32 schools and charter schools has declined by about 10% since its peak in the 2016-2017 school year.

DISTRICT ENROLLMENT

District 4 Enrollment by Grade Level and Year (District Schools Only)

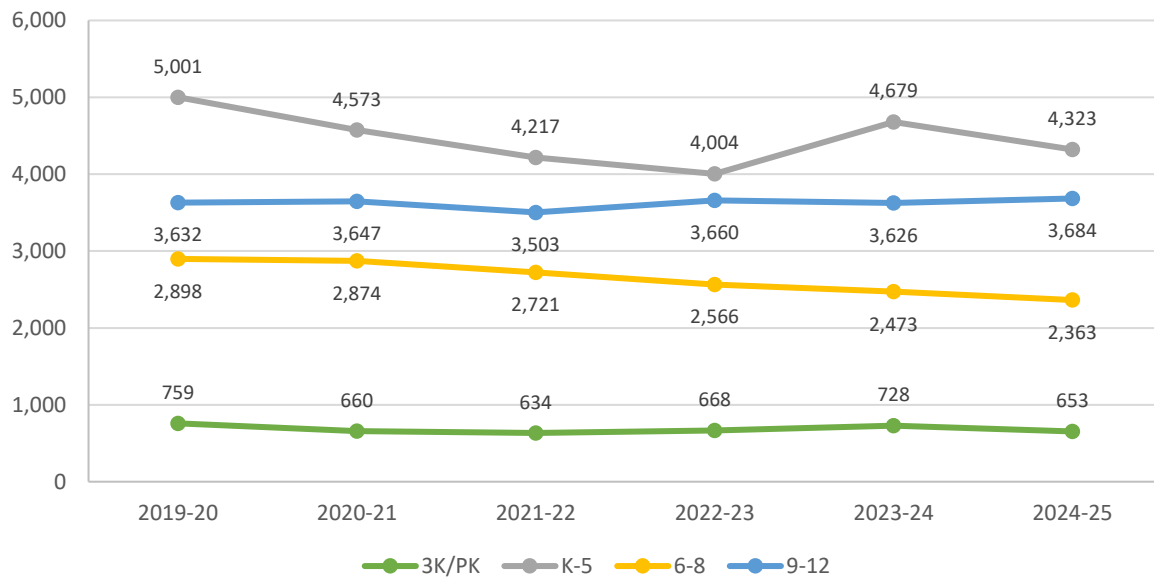


Table 1: District 4 Enrollment - 2019-20 to 2024-25

| | 2019-20 | 2020-21 | 2021-22 | 2022-23 | 2023-24 | 2024-25 | 1yr Change | 5yr Change |
|---------------------|---------------|---------------|---------------|---------------|---------------|---------------|------------|-------------|
| 3K | 338 | 257 | 271 | 292 | 314 | 296 | -6% | -12% |
| PK | 421 | 403 | 363 | 376 | 414 | 357 | -14% | -15% |
| K-5 | 5,001 | 4,573 | 4,217 | 4,004 | 4,679 | 4,323 | -8% | -14% |
| 6-8 | 2,898 | 2,874 | 2,721 | 2,566 | 2,473 | 2,363 | -4% | -18% |
| 9-12 | 3,632 | 3,647 | 3,503 | 3,660 | 3,626 | 3,684 | 2% | 1% |
| Total | 12,290 | 11,754 | 11,075 | 10,898 | 11,506 | 11,023 | -4% | -10% |
| % Change YoY | | -4.4% | -5.8% | -1.6% | 5.6% | -4.2% | | |

Table 2: District 4 Entry Grade Enrollment - 2019-20 to 2024-25

| | 2019-20 | 2020-21 | 2021-22 | 2022-23 | 2023-24 | 2024-25 | 1yr Change | 5yr Change |
|----------|---------|---------|---------|---------|---------|---------|------------|------------|
| K | 759 | 711 | 684 | 611 | 747 | 603 | -19.3% | -21% |
| 6 | 982 | 977 | 893 | 795 | 779 | 786 | 0.9% | -20% |
| 9 | 902 | 918 | 852 | 1,057 | 929 | 976 | 5.1% | 8% |

Source: Audited Register; includes enrollment in district schools only

RESIDENTIAL POPULATION AND DISTRICT RETENTION

District 4 K-12 Enrollment vs. Residential Population

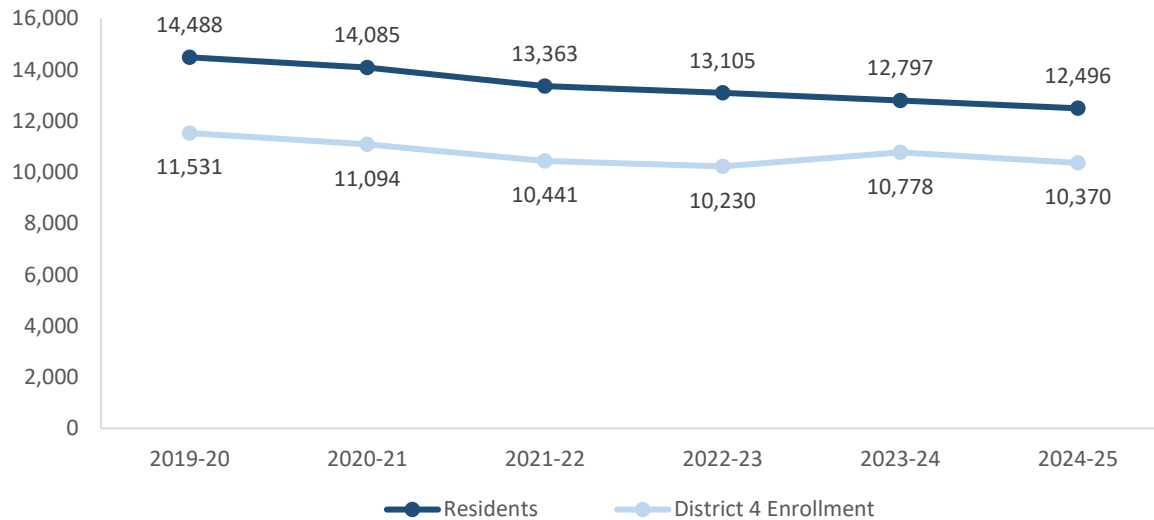


Table 3: District 4 Student Residential Population - 2019-20 to 2024-25

| | 2019-20 | 2020-21 | 2021-22 | 2022-23 | 2023-24 | 2024-25 | 1yr Change | 5yr Change |
|---------------------|---------------|---------------|---------------|---------------|---------------|---------------|------------|-------------|
| K-5 | 6,398 | 6,083 | 5,686 | 5,487 | 5,371 | 5,176 | -4% | -19% |
| 6-8 | 3,278 | 3,323 | 3,217 | 3,083 | 2,970 | 2,832 | -5% | -14% |
| 9-12 | 4,812 | 4,679 | 4,460 | 4,535 | 4,456 | 4,488 | 1% | -7% |
| Total | 14,488 | 14,085 | 13,363 | 13,105 | 12,797 | 12,496 | -2% | -14% |
| % Change YoY | | -2.8% | -5.1% | -1.9% | -2.4% | -2.4% | | |

- Between 2019-20 and 2024-25, the K-5 residential population in District 4 declined by 19%.
- During this time, the 6-8 residential population in District 4 declined by 14%.
- Citywide, the K-12 residential population declined by 8% since 2019-20.

Source: Residential population is the sum of students attending any NYCPS school, charter or non-public school; as such, this metric will not capture students who are home schooled, have dropped out, or are otherwise not enrolled in these school options.

Table 4: Elementary School District Retention (Where District 4 Residents Enroll in School)

| | 2019-20 | 2020-21 | 2021-22 | 2022-23 | 2023-24 | 2024-25 | % of Residents | |
|------------------------|--------------|--------------|--------------|--------------|--------------|--------------|----------------|-------------|
| | | | | | | | 2019-20 | 2024-25 |
| District 4 Schools | 3,312 | 3,020 | 2,795 | 2,672 | 2,533 | 2,377 | 52% | 46% |
| Other District Schools | 439 | 390 | 410 | 420 | 461 | 443 | 7% | 9% |
| Charter Schools | 1,988 | 1,999 | 1,875 | 1,771 | 1,749 | 1,746 | 31% | 34% |
| Non-Public Schools | 449 | 483 | 438 | 445 | 433 | 396 | 7% | 8% |
| Other | 210 | 191 | 168 | 179 | 195 | 214 | 3% | 4% |
| Total | 6,398 | 6,083 | 5,686 | 5,487 | 5,371 | 5,176 | 100% | 100% |
| % Change YoY | | -4.9% | -6.5% | -3.5% | -2.1% | -3.6% | | |

Table 5: Middle School District Retention (Where District 4 Residents Enroll in School)

| | 2019-20 | 2020-21 | 2021-22 | 2022-23 | 2023-24 | 2024-25 | % of Residents | |
|------------------------|--------------|--------------|--------------|--------------|--------------|--------------|----------------|-------------|
| | | | | | | | 2019-20 | 2024-25 |
| District 4 Schools | 1,742 | 1,750 | 1,699 | 1,545 | 1,355 | 1,255 | 53% | 44% |
| Other District Schools | 293 | 308 | 288 | 318 | 349 | 331 | 9% | 12% |
| Charter Schools | 839 | 866 | 829 | 813 | 842 | 832 | 26% | 29% |
| Non-Public Schools | 284 | 286 | 279 | 293 | 303 | 298 | 9% | 11% |
| Other | 120 | 113 | 122 | 114 | 121 | 116 | 4% | 4% |
| Total | 3,278 | 3,323 | 3,217 | 3,083 | 2,970 | 2,832 | 100% | 100% |
| % Change YoY | | 1.4% | -3.2% | -4.2% | -3.7% | -4.6% | | |

Table 6: Where District 4 Students Live - Grades K-5

| | K-5 | | % of Students | |
|----------------|---------|---------|---------------|---------|
| | 2019-20 | 2024-25 | 2019-20 | 2024-25 |
| District 4 | 3,312 | 2,377 | 66% | 55% |
| Other District | 1,689 | 1,946 | 34% | 45% |
| | 5,001 | 4,323 | 100% | 100% |

Table 7: Where District 4 Students Live - Grades 6-8

| | 6-8 | | % of Students | |
|----------------|---------|---------|---------------|---------|
| | 2019-20 | 2024-25 | 2019-20 | 2024-25 |
| District 4 | 1,742 | 1,255 | 60% | 53% |
| Other District | 1,156 | 1,108 | 40% | 47% |
| | 2,898 | 2,363 | 100% | 100% |

Citywide Trends

- Citywide, the average **District Retention Rate** (the percent of students living in a district who enroll in a district school in that district) is 54% for ES and 49% for MS.
- Citywide, the average **District Enrollment Rate** (the percent of students enrolled in district schools who live in that district) is 83% for ES and 79% for MS.

Source: Audited Register for NYCPS and charter schools; NYCPS administrative data for non-public schools

DISTRICT ES AND MS ENROLLMENT MODEL ("IN-OUT MODEL")

The table below depicts the prevailing trends for students coming into the district ("IN") and leaving the district ("OUT") to help identify the primary drivers of district school enrollment change.

Table 8: In-Out Model - ES and MS

| | ES | | | MS | | |
|----------------------------------|---------------|---------------|-------------|---------------|---------------|-------------|
| | 2019-20 | 2024-25 | % Chg | 2019-20 | 2024-25 | % Chg |
| Residents of District 4 | 6,398 | 5,176 | -19% | 3,278 | 2,832 | -14% |
| - OUT to other districts | -439 | -443 | 1% | -293 | -331 | 13% |
| - OUT to D75/D79 | -210 | -214 | 2% | -120 | -116 | -3% |
| - OUT to charters | -1,988 | -1,746 | -12% | -839 | -832 | -1% |
| - OUT to Non-Public Schools | -449 | -396 | -12% | -284 | -298 | 5% |
| Total OUT | -3,086 | -2,799 | -9% | -1,536 | -1,577 | 3% |
| + IN from other districts | +1,689 | +1,946 | 15% | +1,156 | +1,108 | -4% |
| D4 Enrollment | 5,001 | 4,323 | -14% | 2,898 | 2,363 | -18% |

Source: Audited Register for NYCPS and charter schools; NYCPS administrative data for non-public schools

Students Leaving the District:

- At the elementary school level, the largest number of students leaving District 4 enroll in charter schools. Since 2019-20, this number has decreased by 12%, as compared to the overall number of elementary school-aged residents, which has decreased by 19%.
- At the middle school level, the largest number of students leaving District 4 enroll in charter schools. Since 2019-20, this number has remained about the same, as compared to the overall number of middle school-aged residents, which has decreased by 14%.

Students Coming into the District:

- At the elementary school level, a greater number of students living in other districts come into District 4 schools (1,946) than District 4 residents who leave for other district schools (443).
- At the middle school level, a greater number of students living in other districts come into District 4 schools (1,108) than District 4 residents who leave for other district schools (331).

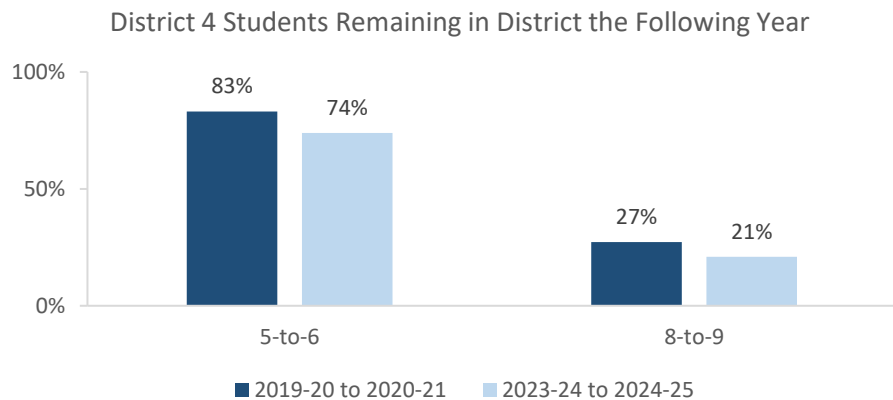
ARTICULATION TRENDS

Table 9: 5-to-6 Articulation (Where District 4 5th Graders Enrolled the Following Year)

| | 2019-20 to 2020-21 | | 2023-24 to 2024-25 | |
|------------------------|--------------------|-------------|--------------------|-------------|
| | # | % | # | % |
| District 4 Schools | 827 | 83% | 611 | 74% |
| Other District Schools | 85 | 9% | 90 | 11% |
| D75 Schools | 1 | 0% | 2 | 0% |
| D79 Schools | 0 | 0% | 0 | 0% |
| Charter Schools | 27 | 3% | 41 | 5% |
| Non-Public Schools | 17 | 2% | 10 | 1% |
| Out of NYC | 31 | 3% | 60 | 7% |
| Other | 8 | 1% | 13 | 2% |
| Total | 996 | 100% | 827 | 100% |

Table 10: 8-to-9 Articulation (Where District 4 8th Graders Enrolled the Following Year)

| | 2019-20 to 2020-21 | | 2023-24 to 2024-25 | |
|------------------------|--------------------|-------------|--------------------|-------------|
| | # | % | # | % |
| District 4 Schools | 261 | 27% | 183 | 21% |
| Other District Schools | 533 | 56% | 562 | 64% |
| D75 Schools | 0 | 0% | 2 | 0% |
| D79 Schools | 1 | 0% | 2 | 0% |
| Charter Schools | 89 | 9% | 50 | 6% |
| Non-Public Schools | 31 | 3% | 21 | 2% |
| Out of NYC | 30 | 3% | 47 | 5% |
| Other | 11 | 1% | 7 | 1% |
| Total | 956 | 100% | 874 | 100% |



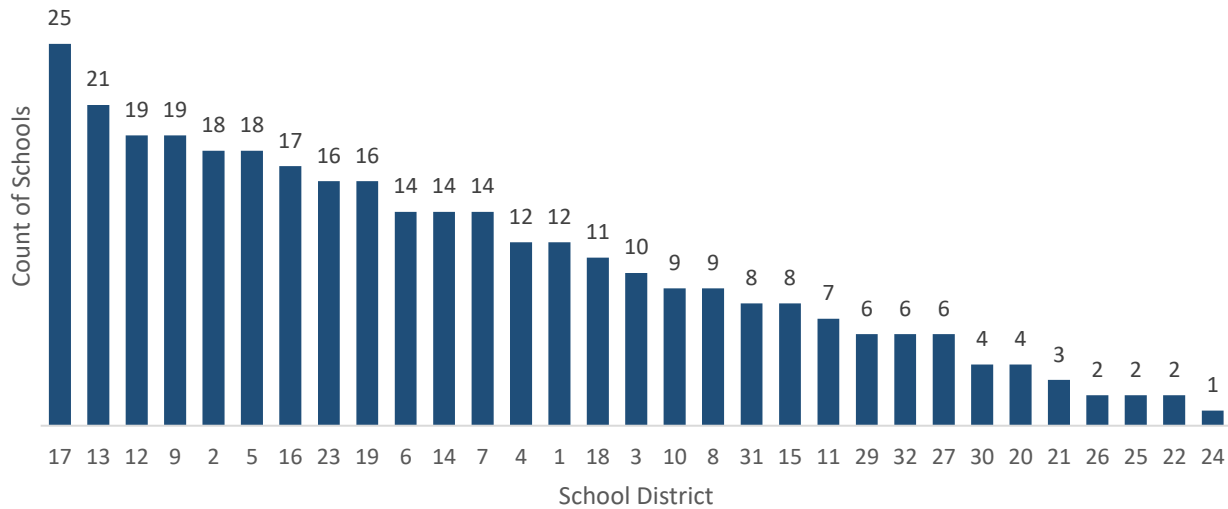
- Citywide, the average percent of graduating 5th graders who remain at a district school in the same district for 6th grade is 73%; for graduating 8th graders, the average percent of students who remain in the same district for 9th grade is 37%.

SCHOOL COUNTS BY ENROLLMENT RANGE

Table 11: District 4 School Counts by Enrollment Range

| Enrollment Range | School Level | | | | | | | |
|------------------|--------------|----|----|----|-----|------|------|-------|
| | ECC | ES | MS | HS | K-8 | 6-12 | K-12 | Total |
| Less than 150 | 0 | 2 | 1 | 0 | 0 | 0 | 0 | 3 |
| 150-249 | 1 | 4 | 1 | 2 | 0 | 0 | 0 | 8 |
| 250-349 | 0 | 3 | 1 | 0 | 2 | 0 | 0 | 6 |
| 350-449 | 0 | 0 | 0 | 2 | 4 | 0 | 0 | 6 |
| 450-549 | 0 | 0 | 0 | 1 | 1 | 1 | 0 | 3 |
| 550+ | 0 | 0 | 0 | 1 | 2 | 0 | 0 | 3 |
| <i>Total</i> | 1 | 9 | 3 | 6 | 9 | 1 | 0 | 29 |

Number of Schools with Enrollment in Bottom 25% by School District - 2024-25



Source: Audited Register; includes district schools only; excludes pre-K centers and transfer schools.

ENROLLMENT VS. CAPACITY

Table 12: District 4 Enrollment vs. Capacity - Grades K-5

| | Neighborhood(s) | Count of Schools | Enrollment | Capacity | Seat Excess / (Deficit) |
|-------------------|-----------------|------------------|--------------|--------------|-------------------------|
| District 4 | N/A | 19 | 4,323 | 6,093 | 1,770 |
| Sub-District 1 | East Harlem | 10 | 2,556 | 3,160 | 604 |
| Sub-District 2 | East Harlem | 9 | 1,767 | 2,933 | 1,166 |

Table 13: District 4 Enrollment vs. Capacity - Grades 6-8

| | Neighborhood(s) | Count of Schools | Enrollment | Capacity | Seat Excess / (Deficit) |
|-------------------|-----------------|------------------|--------------|--------------|-------------------------|
| District 4 | N/A | 13 | 2,363 | 3,462 | 1,099 |
| Sub-District 1 | East Harlem | 7 | 1,285 | 1,717 | 432 |
| Sub-District 2 | East Harlem | 6 | 1,078 | 1,745 | 667 |

Source: Enrollment from 2024-25 Audited Register and grade-level capacity estimated from 2023-24 Blue Book; does not include new or planned capacity in 2024-25 and beyond.

BUILDING UTILIZATION

Each year, the SCA publishes the Blue Book, a report analyzing the capacity and enrollment for every NYCPS building across the city. "Under-Utilized Buildings" reflects the projected count of buildings that have at least 150 excess seats.

Table 14: Count of NYCPS Buildings by Utilization Status

| | District 4 | Manhattan |
|--------------------------------------|------------|------------|
| Count of Buildings | 32 | 278 |
| Under-Utilized (UU) Buildings | 15 | 113 |
| 150-299 Excess Seats | 11 | 58 |
| 300+ Excess Seats | 4 | 55 |
| Over-Utilized Buildings | 1 | 41 |

Source: Enrollment and capacity from 2023-24 Blue Book; UU status is from a preliminary 2024-25 UU analysis, and accounts for building enrollment and planning changes implemented in 2024-25 and after.

DISTRICT 75

NYCPS's District 75 provides specialized instructional support for students with significant challenges, such as Autism Spectrum Disorder (ASD), significant cognitive delays, emotional disability, sensory impairment, and multiple disabilities. District 75 serves students through a number of different program models.

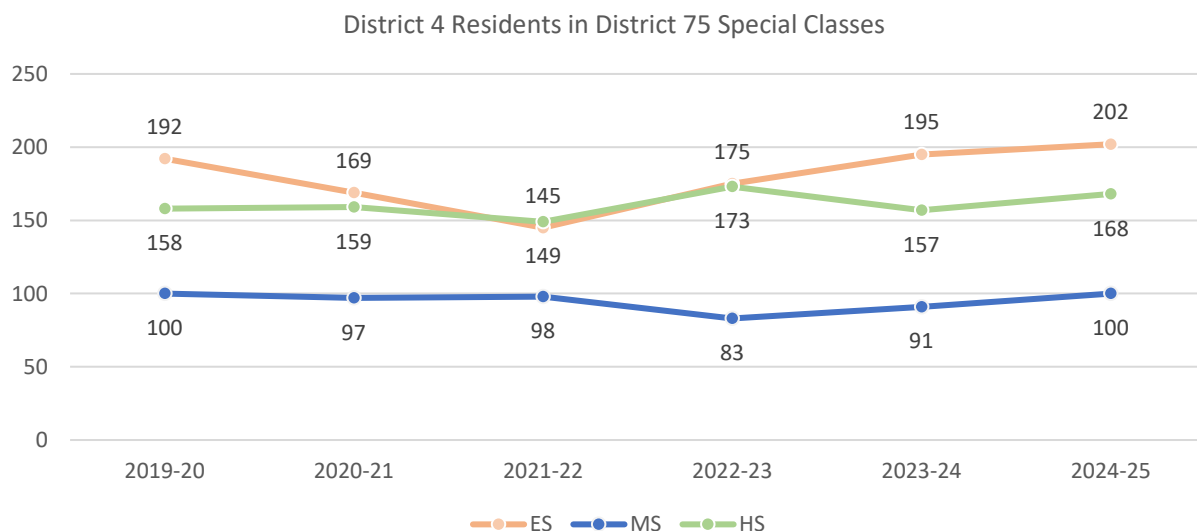
- Most District 75 students attend Special Class programs, which operate as distinct schools and may be located in standalone sites or co-located with district schools.
- A smaller number of students attend Inclusion Programs, in which students receive District 75 services within general education classes at a district school partner.

Table 15: District 75 Seat Need

| | ES | | | MS | | | HS | | |
|------------------|----------|------------|------------|----------|------------|------------|----------|------------|------------|
| | District | Borough | City | District | Borough | City | District | Borough | City |
| Capacity | 196 | 1,482 | 14,094 | 70 | 610 | 5,380 | 60 | 1,250 | 9,584 |
| Residents | 202 | 1,240 | 12,790 | 100 | 472 | 4,515 | 168 | 881 | 8,684 |
| Deficit | -6 | No Deficit | No Deficit | -30 | No Deficit | No Deficit | -108 | No Deficit | No Deficit |

Table 16: District 75 Residential Growth

| | 2019-20 | 2020-21 | 2021-22 | 2022-23 | 2023-24 | 2024-25 | 5yr Change | 1yr Change |
|-------------------|---------|---------|---------|---------|---------|---------|------------|------------|
| ES | 192 | 169 | 145 | 175 | 195 | 202 | 4% | 5% |
| MS | 100 | 97 | 98 | 83 | 91 | 100 | 10% | 0% |
| HS | 158 | 159 | 149 | 173 | 157 | 168 | 7% | 6% |
| All Grades | 450 | 425 | 392 | 431 | 443 | 470 | 6% | 4% |



Source: Audited Register

DISTRICT DEMOGRAPHICS

Table 17: Ethnicity

| | K-5 | | | 6-8 | | | 9-12 | | |
|------------|----------|---------|------|----------|---------|------|----------|---------|------|
| | District | Borough | City | District | Borough | City | District | Borough | City |
| % Asian | 5% | 11% | 17% | 5% | 10% | 17% | 11% | 13% | 16% |
| % Hispanic | 58% | 45% | 42% | 59% | 48% | 44% | 54% | 48% | 44% |
| % Black | 29% | 19% | 22% | 29% | 21% | 23% | 28% | 22% | 24% |
| % White | 4% | 19% | 15% | 4% | 16% | 13% | 5% | 13% | 12% |
| % Other | 3% | 5% | 4% | 3% | 5% | 3% | 2% | 4% | 3% |

Table 18: Special Populations

| | K-5 | | | 6-8 | | | 9-12 | | |
|-------------------------------|----------|---------|------|----------|---------|------|----------|---------|------|
| | District | Borough | City | District | Borough | City | District | Borough | City |
| Students with Disabilities | 27% | 23% | 21% | 28% | 25% | 21% | 24% | 19% | 19% |
| English Language Learners | 21% | 18% | 22% | 15% | 13% | 15% | 11% | 12% | 15% |
| Economically Disadvantaged | 88% | 64% | 76% | 86% | 69% | 77% | 85% | 73% | 77% |
| Students in Temporary Housing | 21% | 15% | 12% | 20% | 15% | 12% | 14% | 13% | 11% |

Source: 2024-25 Audited Register; includes charter schools located in the district and may differ slightly from the NYCPS Demographic Snapshot.

SPECIAL PROGRAMS

Table 19: District 4 Special Program Summary


| | District 4 | Manhattan |
|--|------------|-----------|
| Schools with ASD Programs | 4 | 21 |
| Horizon | 1 | 8 |
| Nest | 3 | 14 |
| Schools with G&T Programs | 3 | 26 |
| Schools with Bilingual Ed Programs | 10 | 72 |
| Dual Language (DL) | 8 | 39 |
| Transitional Bilingual Education (TBE) | 1 | 12 |
| DL/TBE | 1 | 21 |

Note: Schools with both Horizon and Nest programs are counted once in the top row but separately in the Horizon and Nest rows beneath.



Office of District Planning, 2025-2026

N



1 inch = 0.24 miles