

District 5

Data Summary

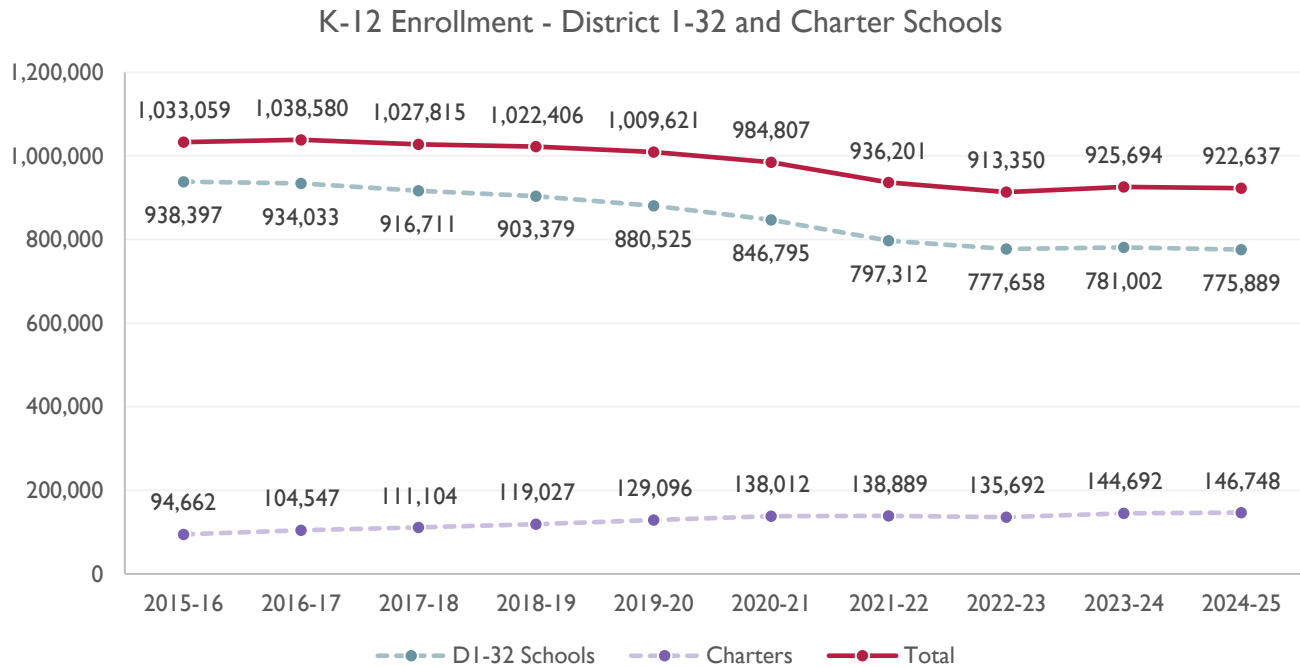
2026-2027 Strategic Planning Data Considerations

Contents

Citywide Enrollment	1
District Enrollment	2
Residential Population and District Retention	3
District ES and MS Enrollment Model ("In-Out Model")	5
Articulation Trends	6
School Counts by Enrollment Range	7
Enrollment vs. Capacity	8
Building Utilization	8
District 75	9
District Demographics	10
Special Programs	10

CITYWIDE ENROLLMENT (DISTRICT AND CHARTER), 2015-16 TO 2024-25

New York City Public Schools (NYCPS) is committed to thoughtful collaboration with districts and communities to collectively strengthen schools, support students and families, and respond to demographic and population changes in New York City.



Source: Audited Register and Charter Headcount; includes district and charter school enrollment only

- Enrollment in D1-32 schools decreased slightly in 2024-2025, remaining approximately stable compared to the steeper declines following the onset of the COVID-19 pandemic.
- Citywide, K-12 enrollment in District 1-32 schools and charter schools has declined by about 10% since its peak in the 2016-2017 school year.

DISTRICT ENROLLMENT

District 5 Enrollment by Grade Level and Year (District Schools Only)

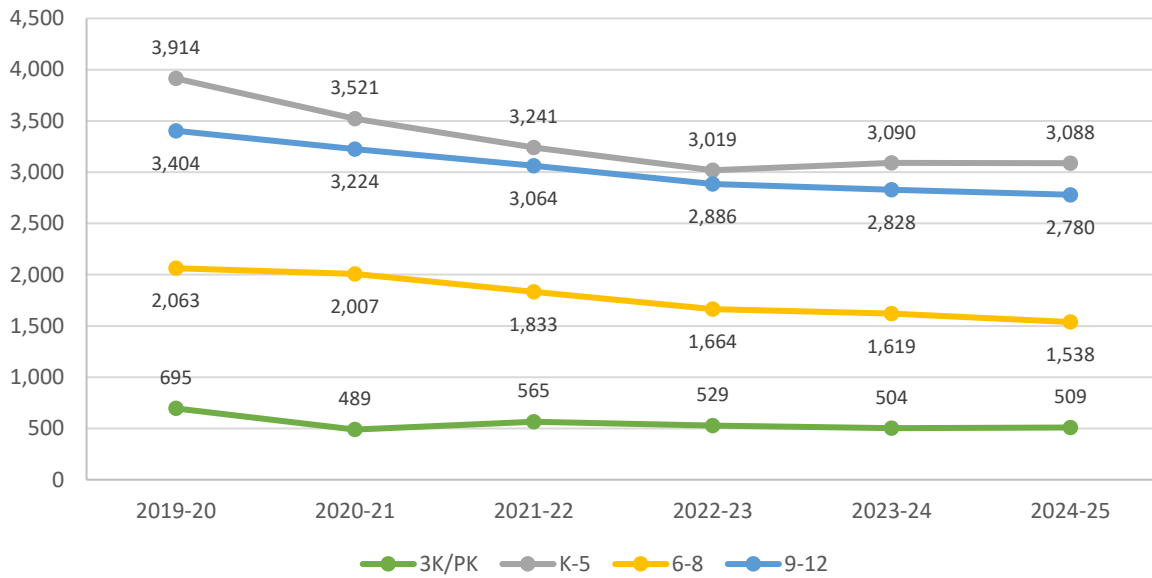


Table 1: District 5 Enrollment - 2019-20 to 2024-25

	2019-20	2020-21	2021-22	2022-23	2023-24	2024-25	1yr Change	5yr Change
3K	274	145	224	189	201	187	-7%	-32%
PK	421	344	341	340	303	322	6%	-24%
K-5	3,914	3,521	3,241	3,019	3,090	3,088	0%	-21%
6-8	2,063	2,007	1,833	1,664	1,619	1,538	-5%	-25%
9-12	3,404	3,224	3,064	2,886	2,828	2,780	-2%	-18%
Total	10,076	9,241	8,703	8,098	8,041	7,915	-2%	-21%
% Change YoY		-8.3%	-5.8%	-7.0%	-0.7%	-1.6%		

Table 2: District 5 Entry Grade Enrollment - 2019-20 to 2024-25

	2019-20	2020-21	2021-22	2022-23	2023-24	2024-25	1yr Change	5yr Change
K	590	489	488	459	509	506	-0.6%	-14%
6	650	665	581	501	483	478	-1.0%	-26%
9	1,002	901	817	743	835	731	-12.5%	-27%

Source: Audited Register; includes enrollment in district schools only

RESIDENTIAL POPULATION AND DISTRICT RETENTION

District 5 K-12 Enrollment vs. Residential Population

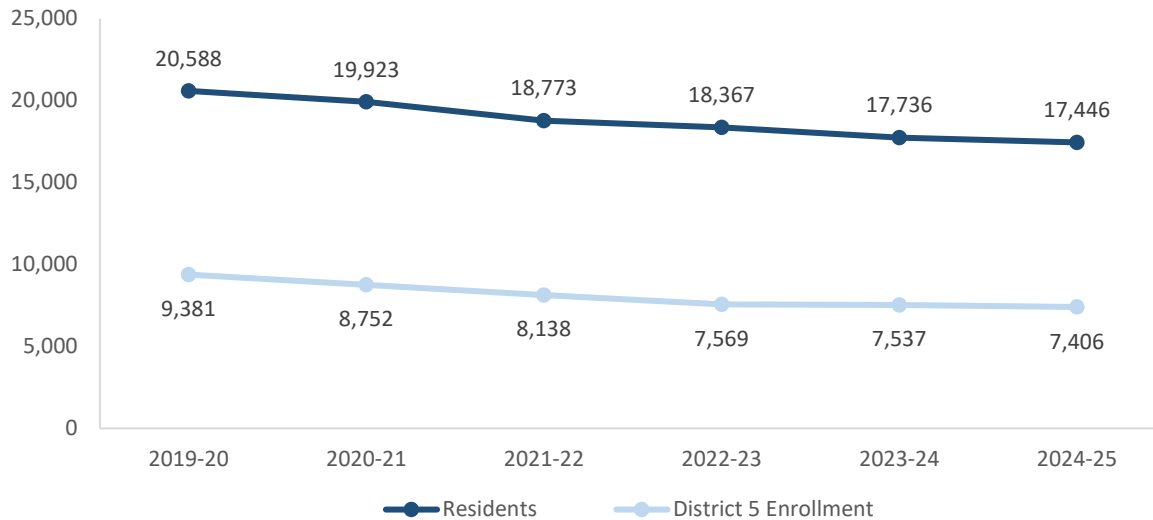


Table 3: District 5 Student Residential Population - 2019-20 to 2024-25

	2019-20	2020-21	2021-22	2022-23	2023-24	2024-25	1yr Change	5yr Change
K-5	9,327	8,712	8,024	7,778	7,458	7,254	-3%	-22%
6-8	4,799	4,800	4,514	4,384	4,112	3,996	-3%	-17%
9-12	6,462	6,411	6,235	6,205	6,166	6,196	0%	-4%
Total	20,588	19,923	18,773	18,367	17,736	17,446	-2%	-15%
% Change YoY		-3.2%	-5.8%	-2.2%	-3.4%	-1.6%		

- Between 2019-20 and 2024-25, the K-5 residential population in District 5 declined by 22%.
- During this time, the 6-8 residential population in District 5 declined by 17%.
- Citywide, the K-12 residential population declined by 8% since 2019-20.

Source: Residential population is the sum of students attending any NYCPS school, charter or non-public school; as such, this metric will not capture students who are home schooled, have dropped out, or are otherwise not enrolled in these school options.

Table 4: Elementary School District Retention (Where District 5 Residents Enroll in School)

	2019-20	2020-21	2021-22	2022-23	2023-24	2024-25	% of Residents	
							2019-20	2024-25
District 5 Schools	3,138	2,783	2,530	2,375	2,204	2,196	34%	30%
Other District Schools	1,321	1,211	1,070	1,050	1,060	1,052	14%	15%
Charter Schools	3,733	3,564	3,311	3,148	3,037	2,808	40%	39%
Non-Public Schools	867	887	863	905	860	871	9%	12%
Other	268	267	250	300	297	327	3%	5%
Total	9,327	8,712	8,024	7,778	7,458	7,254	100%	100%
% Change YoY		-6.6%	-7.9%	-3.1%	-4.1%	-2.7%		

Table 5: Middle School District Retention (Where District 5 Residents Enroll in School)

	2019-20	2020-21	2021-22	2022-23	2023-24	2024-25	% of Residents	
							2019-20	2024-25
District 5 Schools	1,404	1,379	1,243	1,157	1,022	941	29%	24%
Other District Schools	1,030	996	891	847	744	730	21%	18%
Charter Schools	1,660	1,744	1,742	1,777	1,732	1,705	35%	43%
Non-Public Schools	552	532	482	453	463	486	12%	12%
Other	153	149	156	150	151	134	3%	3%
Total	4,799	4,800	4,514	4,384	4,112	3,996	100%	100%
% Change YoY		0.0%	-6.0%	-2.9%	-6.2%	-2.8%		

Table 6: Where District 5 Students Live - Grades K-5

	K-5		% of Students	
	2019-20	2024-25	2019-20	2024-25
District 5	3,138	2,196	80%	71%
Other District	776	892	20%	29%
	3,914	3,088	100%	100%

Table 7: Where District 5 Students Live - Grades 6-8

	6-8		% of Students	
	2019-20	2024-25	2019-20	2024-25
District 5	1,404	941	68%	61%
Other District	659	597	32%	39%
	2,063	1,538	100%	100%

Citywide Trends

- Citywide, the average **District Retention Rate** (the percent of students living in a district who enroll in a district school in that district) is 54% for ES and 49% for MS.
- Citywide, the average **District Enrollment Rate** (the percent of students enrolled in district schools who live in that district) is 83% for ES and 79% for MS.

Source: Audited Register for NYCPS and charter schools; NYCPS administrative data for non-public schools

DISTRICT ES AND MS ENROLLMENT MODEL ("IN-OUT MODEL")

The table below depicts the prevailing trends for students coming into the district ("IN") and leaving the district ("OUT") to help identify the primary drivers of district school enrollment change.

Table 8: In-Out Model - ES and MS

	ES			MS		
	2019-20	2024-25	% Chg	2019-20	2024-25	% Chg
Residents of District 5	9,327	7,254	-22%	4,799	3,996	-17%
- OUT to other districts	-1,321	-1,052	-20%	-1,030	-730	-29%
- OUT to D75/D79	-268	-327	22%	-153	-134	-12%
- OUT to charters	-3,733	-2,808	-25%	-1,660	-1,705	3%
- OUT to Non-Public Schools	-867	-871	0%	-552	-486	-12%
Total OUT	-6,189	-5,058	-18%	-3,395	-3,055	-10%
+ IN from other districts	+776	+892	15%	+659	+597	-9%
D5 Enrollment	3,914	3,088	-21%	2,063	1,538	-25%

Source: Audited Register for NYCPS and charter schools; NYCPS administrative data for non-public schools

Students Leaving the District:

- At the elementary school level, the largest number of students leaving District 5 enroll in charter schools. Since 2019-20, this number has decreased by 25%, as compared to the overall number of elementary school-aged residents, which has decreased by 22%.
- At the middle school level, the largest number of students leaving District 5 enroll in charter schools. Since 2019-20, this number has remained about the same, as compared to the overall number of middle school-aged residents, which has decreased by 17%.

Students Coming into the District:

- At the elementary school level, a smaller number of students living in other districts come into District 5 schools (892) than District 5 residents who leave for other district schools (1,052).
- At the middle school level, a smaller number of students living in other districts come into District 5 schools (597) than District 5 residents who leave for other district schools (730).

ARTICULATION TRENDS

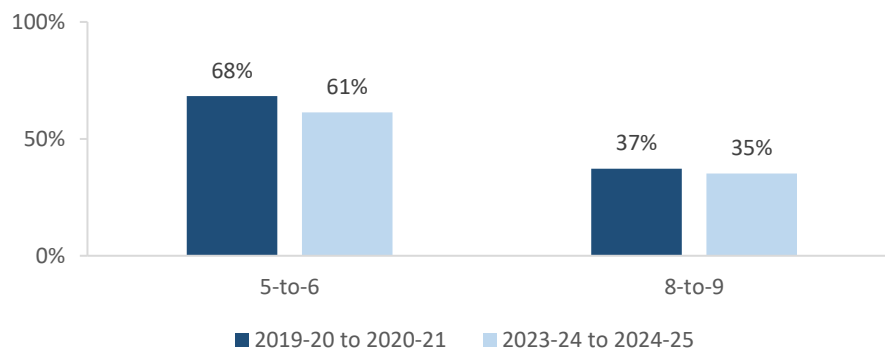
Table 9: 5-to-6 Articulation (Where District 5 5th Graders Enrolled the Following Year)

	2019-20 to 2020-21		2023-24 to 2024-25	
	#	%	#	%
District 5 Schools	529	68%	321	61%
Other District Schools	106	14%	76	15%
D75 Schools	2	0%	2	0%
D79 Schools	1	0%	0	0%
Charter Schools	103	13%	75	14%
Non-Public Schools	8	1%	9	2%
Out of NYC	20	3%	27	5%
Other	5	1%	13	2%
Total	774	100%	523	100%

Table 10: 8-to-9 Articulation (Where District 5 8th Graders Enrolled the Following Year)

	2019-20 to 2020-21		2023-24 to 2024-25	
	#	%	#	%
District 5 Schools	263	37%	210	35%
Other District Schools	364	52%	309	52%
D75 Schools	1	0%	3	1%
D79 Schools	2	0%	4	1%
Charter Schools	38	5%	17	3%
Non-Public Schools	16	2%	9	2%
Out of NYC	19	3%	31	5%
Other	3	0%	15	3%
Total	706	100%	598	100%

District 5 Students Remaining in District the Following Year



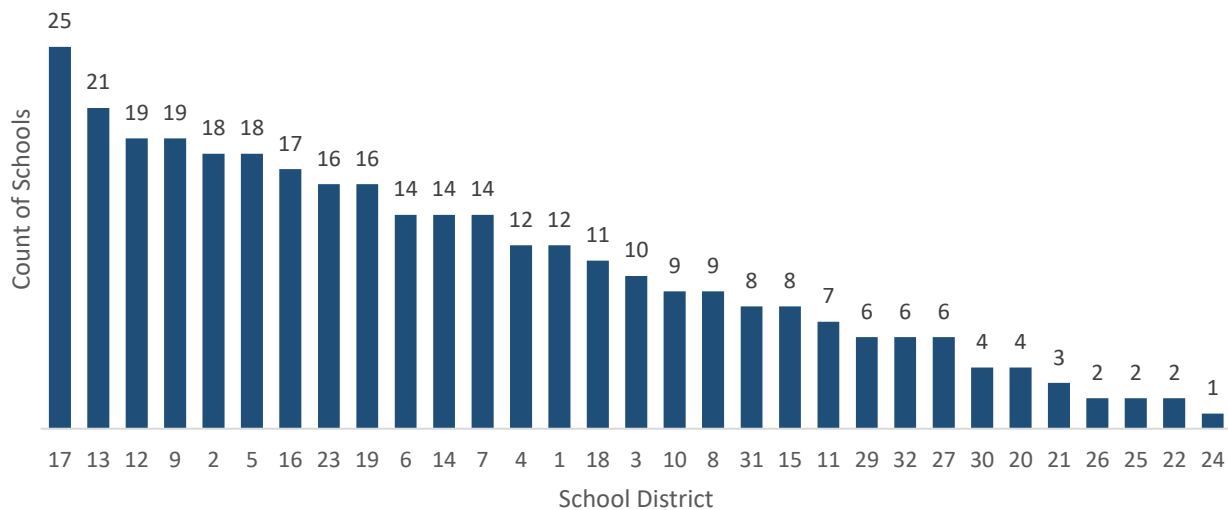
- Citywide, the average percent of graduating 5th graders who remain at a district school in the same district for 6th grade is 73%; for graduating 8th graders, the average percent of students who remain in the same district for 9th grade is 37%.

SCHOOL COUNTS BY ENROLLMENT RANGE

Table 11: District 5 School Counts by Enrollment Range

Enrollment Range	School Level							
	ECC	ES	MS	HS	K-8	6-12	K-12	Total
Less than 150	0	3	3	0	0	0	0	6
150-249	0	9	0	3	0	1	0	13
250-349	0	0	0	1	2	0	0	3
350-449	0	0	0	0	1	1	0	2
450-549	0	0	0	0	0	0	0	0
550+	0	0	0	1	1	2	0	4
<i>Total</i>	0	12	3	5	4	4	0	28

Number of Schools with Enrollment in Bottom 25% by School District - 2024-25



Source: Audited Register; includes district schools only; excludes pre-K centers and transfer schools.

ENROLLMENT VS. CAPACITY

Table 12: District 5 Enrollment vs. Capacity - Grades K-5

	Neighborhood(s)	Count of Schools	Enrollment	Capacity	Seat Excess / (Deficit)
District 5	N/A	16	3,088	5,170	2,082
Sub-District 1	West Harlem	10	1,968	3,378	1,410
Sub-District 2	West Harlem	6	1,120	1,792	672

Table 13: District 5 Enrollment vs. Capacity - Grades 6-8

	Neighborhood(s)	Count of Schools	Enrollment	Capacity	Seat Excess / (Deficit)
District 5	N/A	11	1,538	2,680	1,142
Sub-District 1	West Harlem	7	1,069	1,808	739
Sub-District 2	West Harlem	4	469	872	403

Source: Enrollment from 2024-25 Audited Register and grade-level capacity estimated from 2023-24 Blue Book; does not include new or planned capacity in 2024-25 and beyond.

BUILDING UTILIZATION

Each year, the SCA publishes the Blue Book, a report analyzing the capacity and enrollment for every NYCPS building across the city. "Under-Utilized Buildings" reflects the projected count of buildings that have at least 150 excess seats.

Table 14: Count of NYCPS Buildings by Utilization Status

	District 5	Manhattan
Count of Buildings	37	278
Under-Utilized (UU) Buildings	17	113
150-299 Excess Seats	10	58
300+ Excess Seats	7	55
Over-Utilized Buildings	3	41

Source: Enrollment and capacity from 2023-24 Blue Book; UU status is from a preliminary 2024-25 UU analysis, and accounts for building enrollment and planning changes implemented in 2024-25 and after.

DISTRICT 75

NYCPS's District 75 provides specialized instructional support for students with significant challenges, such as Autism Spectrum Disorder (ASD), significant cognitive delays, emotional disability, sensory impairment, and multiple disabilities. District 75 serves students through a number of different program models.

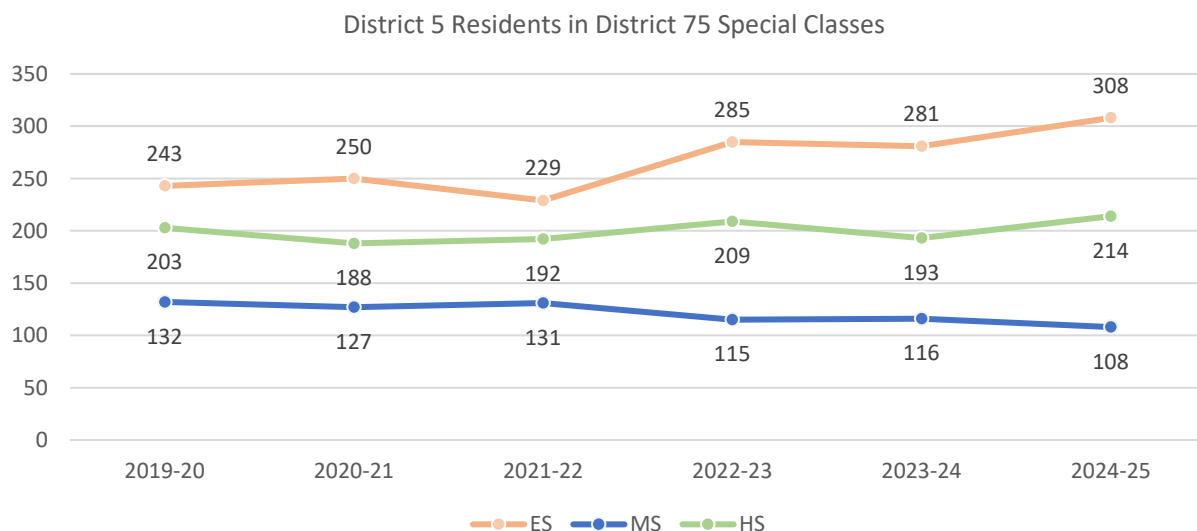
- Most District 75 students attend Special Class programs, which operate as distinct schools and may be located in standalone sites or co-located with district schools.
- A smaller number of students attend Inclusion Programs, in which students receive District 75 services within general education classes at a district school partner.

Table 15: District 75 Seat Need

	ES			MS			HS		
	District	Borough	City	District	Borough	City	District	Borough	City
Capacity	198	1,482	14,094	34	610	5,380	300	1,250	9,584
Residents	308	1,240	12,790	108	472	4,515	214	881	8,684
Deficit	-110	No Deficit	No Deficit	-74	No Deficit	No Deficit	No Deficit	No Deficit	No Deficit

Table 16: District 75 Residential Growth

	2019-20	2020-21	2021-22	2022-23	2023-24	2024-25	5yr Change	1yr Change
ES	243	250	229	285	281	308	10%	27%
MS	132	127	131	115	116	108	-7%	-18%
HS	203	188	192	209	193	214	11%	5%
All Grades	578	565	552	609	590	630	7%	9%



Source: Audited Register

DISTRICT DEMOGRAPHICS

Table 17: Ethnicity

	K-5			6-8			9-12		
	District	Borough	City	District	Borough	City	District	Borough	City
% Asian	1%	11%	17%	2%	10%	17%	5%	13%	16%
% Hispanic	40%	45%	42%	40%	48%	44%	31%	48%	44%
% Black	52%	19%	22%	51%	21%	23%	51%	22%	24%
% White	3%	19%	15%	4%	16%	13%	8%	13%	12%
% Other	3%	5%	4%	3%	5%	3%	5%	4%	3%

Table 18: Special Populations

	K-5			6-8			9-12		
	District	Borough	City	District	Borough	City	District	Borough	City
Students with Disabilities	26%	23%	21%	25%	25%	21%	19%	19%	19%
English Language Learners	16%	18%	22%	10%	13%	15%	6%	12%	15%
Economically Disadvantaged	90%	64%	76%	86%	69%	77%	74%	73%	77%
Students in Temporary Housing	18%	15%	12%	17%	15%	12%	11%	13%	11%

Source: 2024-25 Audited Register; includes charter schools located in the district and may differ slightly from the NYCPS Demographic Snapshot.

SPECIAL PROGRAMS

Table 19: District 5 Special Program Summary

	District 5	Manhattan
Schools with ASD Programs	6	21
Horizon	4	8
Nest	2	14
Schools with G&T Programs	3	26
Schools with Bilingual Ed Programs	3	72
Dual Language (DL)	1	39
Transitional Bilingual Education (TBE)	1	12
DL/TBE	1	21

Note: Schools with both Horizon and Nest programs are counted once in the top row but separately in the Horizon and Nest rows beneath.

