

District 6

Data Summary

2026-2027 Strategic Planning Data Considerations

Contents

Citywide Enrollment	I
District Enrollment	2
Residential Population and District Retention	3
District ES and MS Enrollment Model ("In-Out Model")	5
Articulation Trends	6
School Counts by Enrollment Range	7
Enrollment vs. Capacity	8
Building Utilization	8
District 75	9
District Demographics	10
Special Programs	10

CITYWIDE ENROLLMENT (DISTRICT AND CHARTER), 2015-16 TO 2024-25

New York City Public Schools (NYCPS) is committed to thoughtful collaboration with districts and communities to collectively strengthen schools, support students and families, and respond to demographic and population changes in New York City.



Source: Audited Register and Charter Headcount; includes district and charter school enrollment only

- Enrollment in D1-32 schools decreased slightly in 2024-2025, remaining approximately stable compared to the steeper declines following the onset of the COVID-19 pandemic.
- Citywide, K-12 enrollment in District 1-32 schools and charter schools has declined by about 10% since its peak in the 2016-2017 school year.

DISTRICT ENROLLMENT

District 6 Enrollment by Grade Level and Year (District Schools Only)

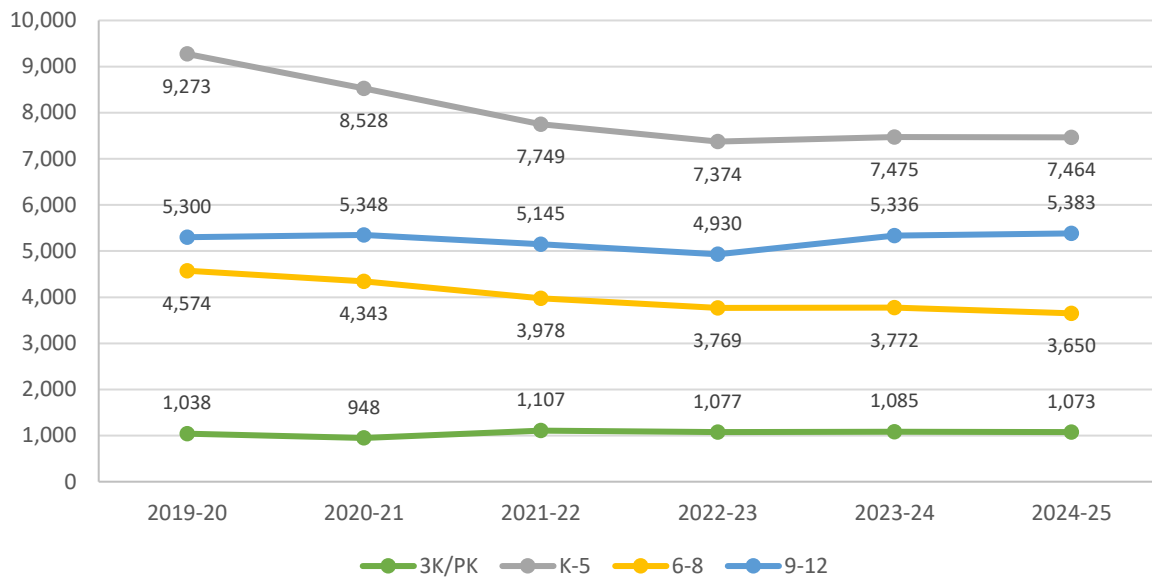


Table 1: District 6 Enrollment - 2019-20 to 2024-25

	2019-20	2020-21	2021-22	2022-23	2023-24	2024-25	1yr Change	5yr Change
3K	261	291	355	361	364	394	8%	51%
PK	777	657	752	716	721	679	-6%	-13%
K-5	9,273	8,528	7,749	7,374	7,475	7,464	0%	-20%
6-8	4,574	4,343	3,978	3,769	3,772	3,650	-3%	-20%
9-12	5,300	5,348	5,145	4,930	5,336	5,383	1%	2%
Total	20,185	19,167	17,979	17,150	17,668	17,570	-1%	-13%
% Change YoY		-5.0%	-6.2%	-4.6%	3.0%	-0.6%		

Table 2: District 6 Entry Grade Enrollment - 2019-20 to 2024-25

	2019-20	2020-21	2021-22	2022-23	2023-24	2024-25	1yr Change	5yr Change
K	1,403	1,309	1,203	1,202	1,226	1,188	-3.1%	-15%
6	1,432	1,388	1,272	1,157	1,185	1,102	-7.0%	-23%
9	1,480	1,627	1,543	1,401	1,717	1,664	-3.1%	12%

Source: Audited Register; includes enrollment in district schools only

RESIDENTIAL POPULATION AND DISTRICT RETENTION

District 6 K-12 Enrollment vs. Residential Population

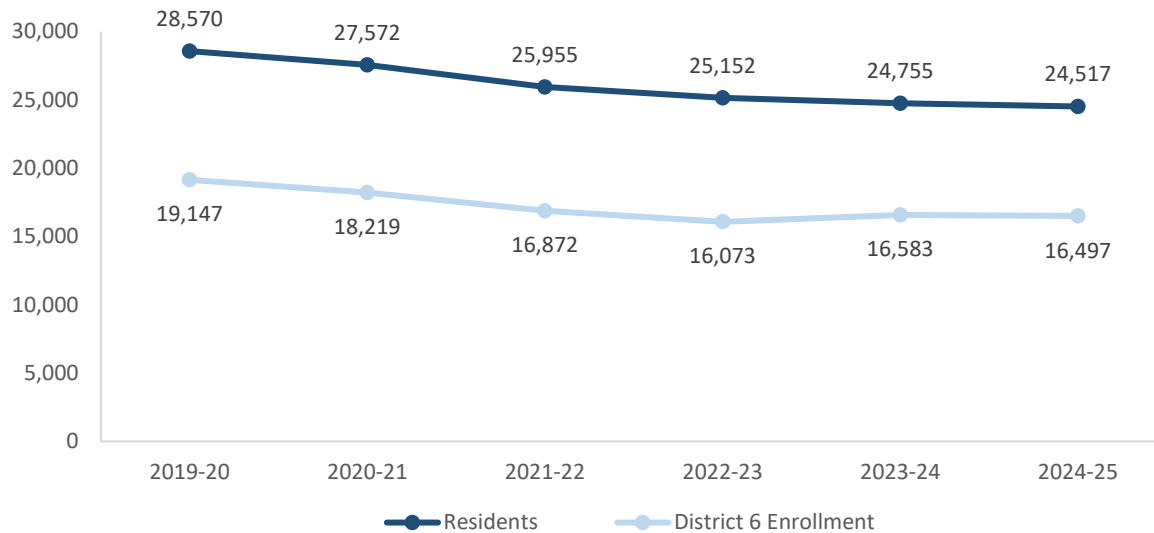


Table 3: District 6 Student Residential Population - 2019-20 to 2024-25

	2019-20	2020-21	2021-22	2022-23	2023-24	2024-25	1yr Change	5yr Change
K-5	12,871	12,129	11,363	10,919	10,686	10,470	-2%	-19%
6-8	6,475	6,426	6,061	5,850	5,739	5,623	-2%	-13%
9-12	9,224	9,017	8,531	8,383	8,330	8,424	1%	-9%
Total	28,570	27,572	25,955	25,152	24,755	24,517	-1%	-14%
% Change YoY		-3.5%	-5.9%	-3.1%	-1.6%	-1.0%		

- Between 2019-20 and 2024-25, the K-5 residential population in District 6 declined by 19%.
- During this time, the 6-8 residential population in District 6 declined by 13%.
- Citywide, the K-12 residential population declined by 8% since 2019-20.

Source: Residential population is the sum of students attending any NYCPS school, charter or non-public school; as such, this metric will not capture students who are home schooled, have dropped out, or are otherwise not enrolled in these school options.

Table 4: Elementary School District Retention (Where District 6 Residents Enroll in School)

	2019-20	2020-21	2021-22	2022-23	2023-24	2024-25	% of Residents	
							2019-20	2024-25
District 6 Schools	7,986	7,263	6,622	6,321	6,246	6,099	62%	58%
Other District Schools	792	693	592	597	562	555	6%	5%
Charter Schools	2,779	2,952	2,950	2,858	2,849	2,784	22%	27%
Non-Public Schools	1,128	1,024	1,032	962	823	791	9%	8%
Other	186	197	167	181	206	241	1%	2%
Total	12,871	12,129	11,363	10,919	10,686	10,470	100%	100%
% Change YoY		-5.8%	-6.3%	-3.9%	-2.1%	-2.0%		

Table 5: Middle School District Retention (Where District 6 Residents Enroll in School)

	2019-20	2020-21	2021-22	2022-23	2023-24	2024-25	% of Residents	
							2019-20	2024-25
District 6 Schools	3,656	3,530	3,251	3,079	3,043	2,881	56%	51%
Other District Schools	646	636	604	523	472	462	10%	8%
Charter Schools	1,433	1,543	1,532	1,578	1,614	1,672	22%	30%
Non-Public Schools	616	606	575	579	521	515	10%	9%
Other	124	111	99	91	89	93	2%	2%
Total	6,475	6,426	6,061	5,850	5,739	5,623	100%	100%
% Change YoY		-0.8%	-5.7%	-3.5%	-1.9%	-2.0%		

Table 6: Where District 6 Students Live - Grades K-5

	K-5		% of Students	
	2019-20	2024-25	2019-20	2024-25
District 6	7,986	6,099	86%	82%
Other District	1,287	1,365	14%	18%
	9,273	7,464	100%	100%

Table 7: Where District 6 Students Live - Grades 6-8

	6-8		% of Students	
	2019-20	2024-25	2019-20	2024-25
District 6	3,656	2,881	80%	79%
Other District	918	769	20%	21%
	4,574	3,650	100%	100%

Citywide Trends

- Citywide, the average **District Retention Rate** (the percent of students living in a district who enroll in a district school in that district) is 54% for ES and 49% for MS.

- Citywide, the average **District Enrollment Rate** (the percent of students enrolled in district schools who live in that district) is 83% for ES and 79% for MS.

Source: Audited Register for NYCPS and charter schools; NYCPS administrative data for non-public schools

DISTRICT ES AND MS ENROLLMENT MODEL ("IN-OUT MODEL")

The table below depicts the prevailing trends for students coming into the district ("IN") and leaving the district ("OUT") to help identify the primary drivers of district school enrollment change.

Table 8: In-Out Model - ES and MS

	ES			MS		
	2019-20	2024-25	% Chg	2019-20	2024-25	% Chg
Residents of District 6	12,871	10,470	-19%	6,475	5,623	-13%
- OUT to other districts	-792	-555	-30%	-646	-462	-28%
- OUT to D75/D79	-186	-241	30%	-124	-93	-25%
- OUT to charters	-2,779	-2,784	0%	-1,433	-1,672	17%
- OUT to Non-Public Schools	-1,128	-791	-30%	-616	-515	-16%
Total OUT	-4,885	-4,371	-11%	-2,819	-2,742	-3%
+ IN from other districts	+1,287	+1,365	6%	+918	+769	-16%
D6 Enrollment	9,273	7,464	-20%	4,574	3,650	-20%

Source: Audited Register for NYCPS and charter schools; NYCPS administrative data for non-public schools

Students Leaving the District:

- At the elementary school level, the largest number of students leaving District 6 enroll in charter schools. Since 2019-20, this number has remained about the same, as compared to the overall number of elementary school-aged residents, which has decreased by 19%.
- At the middle school level, the largest number of students leaving District 6 enroll in charter schools. Since 2019-20, this number has grown by 17%, as compared to the overall number of middle school-aged residents, which has decreased by 13%.

Students Coming into the District:

- At the elementary school level, a greater number of students living in other districts come into District 6 schools (1,365) than District 6 residents who leave for other district schools (555).
- At the middle school level, a greater number of students living in other districts come into District 6 schools (769) than District 6 residents who leave for other district schools (462).

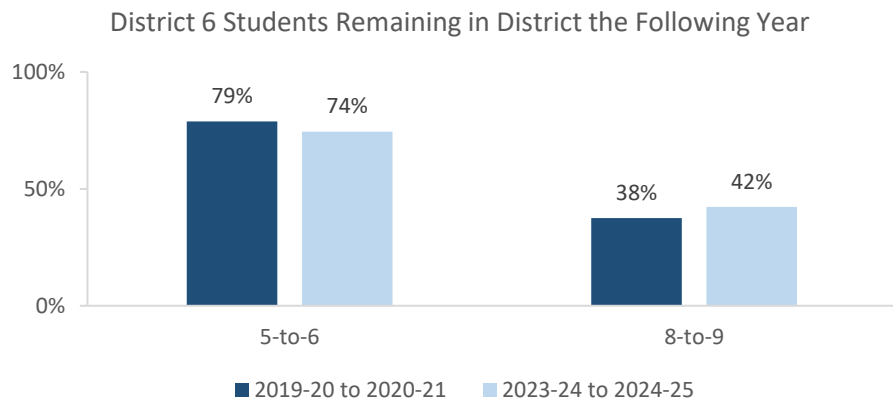
ARTICULATION TRENDS

Table 9: 5-to-6 Articulation (Where District 6 5th Graders Enrolled the Following Year)

	2019-20 to 2020-21		2023-24 to 2024-25	
	#	%	#	%
District 6 Schools	1,292	79%	958	74%
Other District Schools	89	5%	109	8%
D75 Schools	2	0%	0	0%
D79 Schools	0	0%	0	0%
Charter Schools	171	10%	116	9%
Non-Public Schools	7	0%	17	1%
Out of NYC	66	4%	81	6%
Other	12	1%	6	0%
Total	1,639	100%	1,287	100%

Table 10: 8-to-9 Articulation (Where District 6 8th Graders Enrolled the Following Year)

	2019-20 to 2020-21		2023-24 to 2024-25	
	#	%	#	%
District 6 Schools	604	38%	564	42%
Other District Schools	861	54%	572	43%
D75 Schools	4	0%	1	0%
D79 Schools	0	0%	1	0%
Charter Schools	32	2%	57	4%
Non-Public Schools	20	1%	49	4%
Out of NYC	67	4%	79	6%
Other	20	1%	11	1%
Total	1,608	100%	1,334	100%



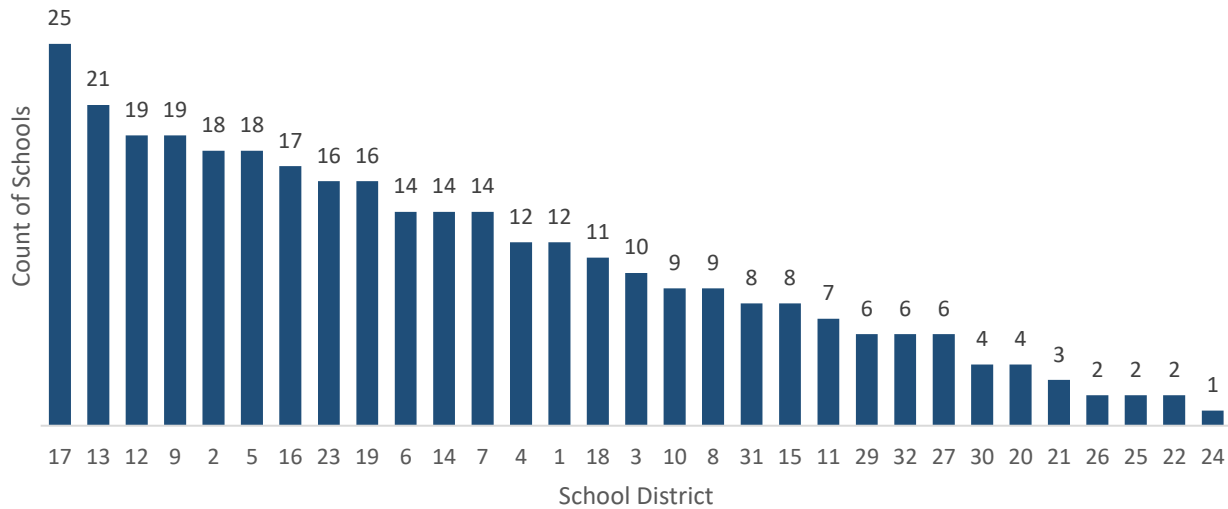
- Citywide, the average percent of graduating 5th graders who remain at a district school in the same district for 6th grade is 73%; for graduating 8th graders, the average percent of students who remain in the same district for 9th grade is 37%.

SCHOOL COUNTS BY ENROLLMENT RANGE

Table 11: District 6 School Counts by Enrollment Range

Enrollment Range	School Level							
	ECC	ES	MS	HS	K-8	6-12	K-12	Total
Less than 150	0	0	2	0	0	0	0	2
150-249	0	4	5	1	1	0	0	11
250-349	0	9	2	0	2	0	0	13
350-449	0	4	0	4	3	0	0	11
450-549	0	0	0	1	1	0	0	2
550+	0	0	0	2	1	2	1	6
<i>Total</i>	0	17	9	8	8	2	1	45

Number of Schools with Enrollment in Bottom 25% by School District - 2024-25



Source: Audited Register; includes district schools only; excludes pre-K centers and transfer schools.

ENROLLMENT VS. CAPACITY

Table 12: District 6 Enrollment vs. Capacity - Grades K-5

	Neighborhood(s)	Count of Schools	Enrollment	Capacity	Seat Excess / (Deficit)
District 6	N/A	26	7,464	8,831	1,367
Sub-District 1	Washington Hts, Inwood	17	4,924	5,754	830
Sub-District 2	Hamilton Hts, Wash. Hts	9	2,540	3,077	537

Table 13: District 6 Enrollment vs. Capacity - Grades 6-8

	Neighborhood(s)	Count of Schools	Enrollment	Capacity	Seat Excess / (Deficit)
District 6	N/A	20	3,650	5,676	2,026
Sub-District 1	Washington Hts, Inwood	12	2,144	2,970	826
Sub-District 2	Hamilton Hts, Wash. Hts	8	1,506	2,706	1,200

Source: Enrollment from 2024-25 Audited Register and grade-level capacity estimated from 2023-24 Blue Book; does not include new or planned capacity in 2024-25 and beyond.

BUILDING UTILIZATION

Each year, the SCA publishes the Blue Book, a report analyzing the capacity and enrollment for every NYCPS building across the city. "Under-Utilized Buildings" reflects the projected count of buildings that have at least 150 excess seats.

Table 14: Count of NYCPS Buildings by Utilization Status

	District 6	Manhattan
Count of Buildings	52	278
Under-Utilized (UU) Buildings	15	113
150-299 Excess Seats	6	58
300+ Excess Seats	9	55
Over-Utilized Buildings	6	41

Source: Enrollment and capacity from 2023-24 Blue Book; UU status is from a preliminary 2024-25 UU analysis, and accounts for building enrollment and planning changes implemented in 2024-25 and after.

DISTRICT 75

NYCPS's District 75 provides specialized instructional support for students with significant challenges, such as Autism Spectrum Disorder (ASD), significant cognitive delays, emotional disability, sensory impairment, and multiple disabilities. District 75 serves students through a number of different program models.

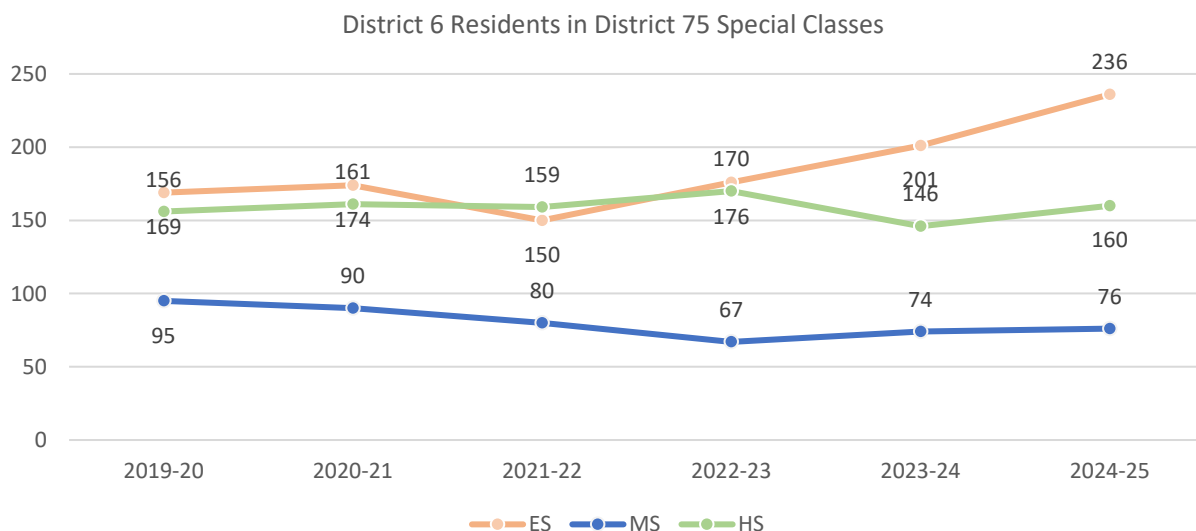
- Most District 75 students attend Special Class programs, which operate as distinct schools and may be located in standalone sites or co-located with district schools.
- A smaller number of students attend Inclusion Programs, in which students receive District 75 services within general education classes at a district school partner.

Table 15: District 75 Seat Need

	ES			MS			HS		
	District	Borough	City	District	Borough	City	District	Borough	City
Capacity	230	1,482	14,094	60	610	5,380	44	1,250	9,584
Residents	236	1,240	12,790	76	472	4,515	160	881	8,684
Deficit	-6	No Deficit	No Deficit	-16	No Deficit	No Deficit	-116	No Deficit	No Deficit

Table 16: District 75 Residential Growth

	2019-20	2020-21	2021-22	2022-23	2023-24	2024-25	5yr Change	1yr Change
ES	169	174	150	176	201	236	17%	40%
MS	95	90	80	67	74	76	3%	-20%
HS	156	161	159	170	146	160	10%	3%
All Grades	420	425	389	413	421	472	12%	12%



Source: Audited Register

DISTRICT DEMOGRAPHICS

Table 17: Ethnicity

	K-5			6-8			9-12		
	District	Borough	City	District	Borough	City	District	Borough	City
% Asian	1%	11%	17%	1%	10%	17%	1%	13%	16%
% Hispanic	81%	45%	42%	86%	48%	44%	85%	48%	44%
% Black	9%	19%	22%	7%	21%	23%	11%	22%	24%
% White	7%	19%	15%	4%	16%	13%	1%	13%	12%
% Other	3%	5%	4%	1%	5%	3%	2%	4%	3%

Table 18: Special Populations

	K-5			6-8			9-12		
	District	Borough	City	District	Borough	City	District	Borough	City
Students with Disabilities	25%	23%	21%	25%	25%	21%	19%	19%	19%
English Language Learners	28%	18%	22%	24%	13%	15%	32%	12%	15%
Economically Disadvantaged	83%	64%	76%	87%	69%	77%	90%	73%	77%
Students in Temporary Housing	15%	15%	12%	17%	15%	12%	24%	13%	11%

Source: 2024-25 Audited Register; includes charter schools located in the district and may differ slightly from the NYCPS Demographic Snapshot.

SPECIAL PROGRAMS

Table 19: District 6 Special Program Summary


	District 6	Manhattan
Schools with ASD Programs	1	21
<i>Horizon</i>	0	8
<i>Nest</i>	1	14
Schools with G&T Programs	2	26
Schools with Bilingual Ed Programs	33	72
<i>Dual Language (DL)</i>	13	39
<i>Transitional Bilingual Education (TBE)</i>	8	12
<i>DL/TBE</i>	12	21

Note: Schools with both *Horizon* and *Nest* programs are counted once in the top row but separately in the *Horizon* and *Nest* rows beneath.



Office of District Planning, 2025-2026

N



1 inch = 0.49 miles