

District 7

Data Summary

2026-2027 Strategic Planning Data Considerations

Contents

Citywide Enrollment	I
District Enrollment	2
Residential Population and District Retention	3
District ES and MS Enrollment Model ("In-Out Model")	5
Articulation Trends	6
School Counts by Enrollment Range	7
Enrollment vs. Capacity	8
Building Utilization	8
District 75	9
District Demographics	10
Special Programs	10

CITYWIDE ENROLLMENT (DISTRICT AND CHARTER), 2015-16 TO 2024-25

New York City Public Schools (NYCPS) is committed to thoughtful collaboration with districts and communities to collectively strengthen schools, support students and families, and respond to demographic and population changes in New York City.



Source: Audited Register and Charter Headcount; includes district and charter school enrollment only

- Enrollment in D1-32 schools decreased slightly in 2024-2025, remaining approximately stable compared to the steeper declines following the onset of the COVID-19 pandemic.
- Citywide, K-12 enrollment in District 1-32 schools and charter schools has declined by about 10% since its peak in the 2016-2017 school year.

DISTRICT ENROLLMENT

District 7 Enrollment by Grade Level and Year (District Schools Only)

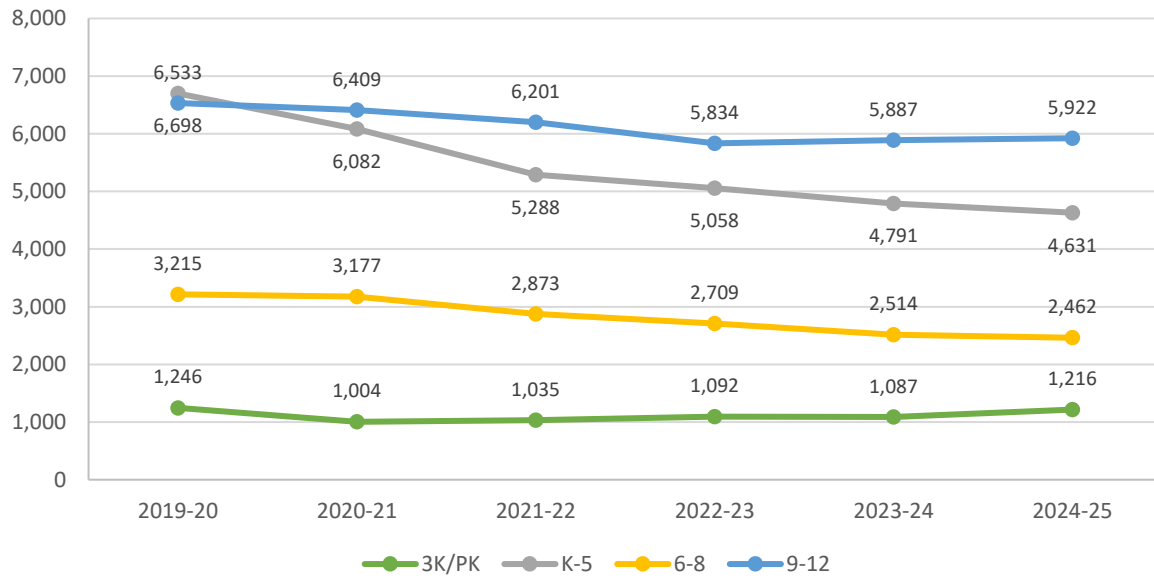


Table 1: District 7 Enrollment - 2019-20 to 2024-25

	2019-20	2020-21	2021-22	2022-23	2023-24	2024-25	1yr Change	5yr Change
3K	489	343	394	397	448	510	14%	4%
PK	757	661	641	695	639	706	10%	-7%
K-5	6,698	6,082	5,288	5,058	4,791	4,631	-3%	-31%
6-8	3,215	3,177	2,873	2,709	2,514	2,462	-2%	-23%
9-12	6,533	6,409	6,201	5,834	5,887	5,922	1%	-9%
Total	17,692	16,672	15,397	14,693	14,279	14,231	0%	-20%
% Change YoY		-5.8%	-7.6%	-4.6%	-2.8%	-0.3%		

Table 2: District 7 Entry Grade Enrollment - 2019-20 to 2024-25

	2019-20	2020-21	2021-22	2022-23	2023-24	2024-25	1yr Change	5yr Change
K	1,021	857	814	771	767	703	-8.3%	-31%
6	1,036	1,064	923	838	809	795	-1.7%	-23%
9	1,822	1,738	1,768	1,574	1,625	1,602	-1.4%	-12%

Source: Audited Register; includes enrollment in district schools only

RESIDENTIAL POPULATION AND DISTRICT RETENTION

District 7 K-12 Enrollment vs. Residential Population

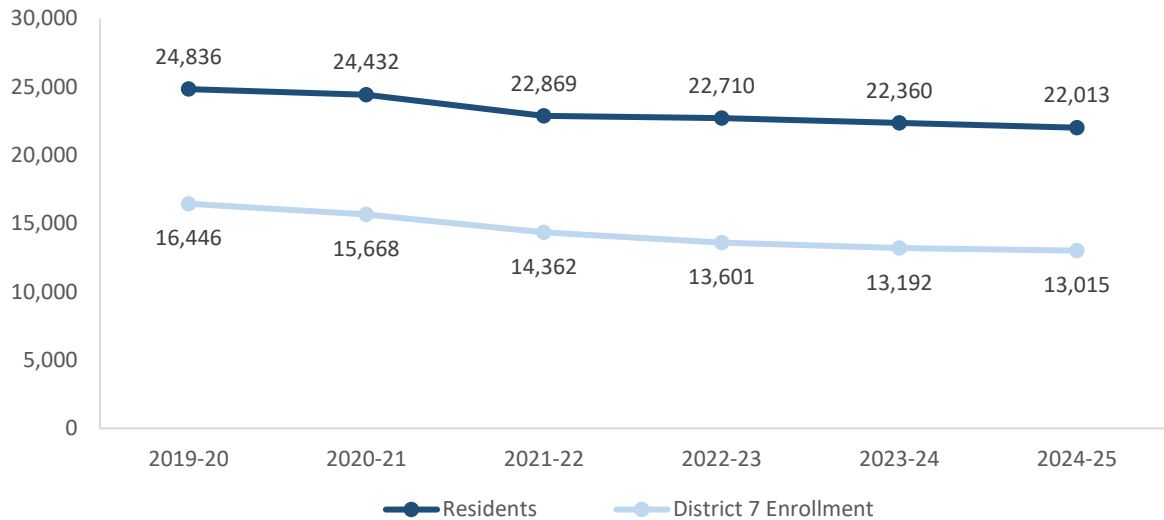


Table 3: District 7 Student Residential Population - 2019-20 to 2024-25

	2019-20	2020-21	2021-22	2022-23	2023-24	2024-25	1yr Change	5yr Change
K-5	11,336	10,831	9,803	9,784	9,543	9,231	-3%	-19%
6-8	5,706	5,785	5,401	5,319	5,226	5,065	-3%	-11%
9-12	7,794	7,816	7,665	7,607	7,591	7,717	2%	-1%
Total	24,836	24,432	22,869	22,710	22,360	22,013	-2%	-11%
% Change YoY		-1.6%	-6.4%	-0.7%	-1.5%	-1.6%		

- Between 2019-20 and 2024-25, the K-5 residential population in District 7 declined by 19%.
- During this time, the 6-8 residential population in District 7 declined by 11%.
- Citywide, the K-12 residential population declined by 8% since 2019-20.

Source: Residential population is the sum of students attending any NYCPS school, charter or non-public school; as such, this metric will not capture students who are home schooled, have dropped out, or are otherwise not enrolled in these school options.

Table 4: Elementary School District Retention (Where District 7 Residents Enroll in School)

	2019-20	2020-21	2021-22	2022-23	2023-24	2024-25	% of Residents	
							2019-20	2024-25
District 7 Schools	5,602	5,034	4,357	4,160	3,857	3,626	49%	39%
Other District Schools	918	909	765	852	853	824	8%	9%
Charter Schools	3,919	4,082	4,006	4,050	4,081	4,008	35%	43%
Non-Public Schools	532	461	360	384	366	370	5%	4%
Other	365	345	315	338	386	403	3%	4%
Total	11,336	10,831	9,803	9,784	9,543	9,231	100%	100%
% Change YoY		-4.5%	-9.5%	-0.2%	-2.5%	-3.3%		

Table 5: Middle School District Retention (Where District 7 Residents Enroll in School)

	2019-20	2020-21	2021-22	2022-23	2023-24	2024-25	% of Residents	
							2019-20	2024-25
District 7 Schools	2,653	2,600	2,294	2,177	2,022	1,945	46%	38%
Other District Schools	698	663	583	552	558	525	12%	10%
Charter Schools	1,852	2,049	2,089	2,140	2,204	2,198	32%	43%
Non-Public Schools	325	283	251	261	268	233	6%	5%
Other	178	190	184	189	174	164	3%	3%
Total	5,706	5,785	5,401	5,319	5,226	5,065	100%	100%
% Change YoY		1.4%	-6.6%	-1.5%	-1.7%	-3.1%		

Table 6: Where District 7 Students Live - Grades K-5

	K-5		% of Students	
	2019-20	2024-25	2019-20	2024-25
District 7	5,602	3,626	84%	78%
Other District	1,096	1,005	16%	22%
	6,698	4,631	100%	100%

Table 7: Where District 7 Students Live - Grades 6-8

	6-8		% of Students	
	2019-20	2024-25	2019-20	2024-25
District 7	2,653	1,945	83%	79%
Other District	562	517	17%	21%
	3,215	2,462	100%	100%

Citywide Trends

- Citywide, the average **District Retention Rate** (the percent of students living in a district who enroll in a district school in that district) is 54% for ES and 49% for MS.
- Citywide, the average **District Enrollment Rate** (the percent of students enrolled in district schools who live in that district) is 83% for ES and 79% for MS.

Source: Audited Register for NYCPS and charter schools; NYCPS administrative data for non-public schools

DISTRICT ES AND MS ENROLLMENT MODEL ("IN-OUT MODEL")

The table below depicts the prevailing trends for students coming into the district ("IN") and leaving the district ("OUT") to help identify the primary drivers of district school enrollment change.

Table 8: In-Out Model - ES and MS

	ES			MS		
	2019-20	2024-25	% Chg	2019-20	2024-25	% Chg
Residents of District 7	11,336	9,231	-19%	5,706	5,065	-11%
- OUT to other districts	-918	-824	-10%	-698	-525	-25%
- OUT to D75/D79	-365	-403	10%	-178	-164	-8%
- OUT to charters	-3,919	-4,008	2%	-1,852	-2,198	19%
- OUT to Non-Public Schools	-532	-370	-30%	-325	-233	-28%
Total OUT	-5,734	-5,605	-2%	-3,053	-3,120	2%
+ IN from other districts	+1,096	+1,005	-8%	+562	+517	-8%
D7 Enrollment	6,698	4,631	-31%	3,215	2,462	-23%

Source: Audited Register for NYCPS and charter schools; NYCPS administrative data for non-public schools

Students Leaving the District:

- At the elementary school level, the largest number of students leaving District 7 enroll in charter schools. Since 2019-20, this number has remained about the same, as compared to the overall number of elementary school-aged residents, which has decreased by 19%.
- At the middle school level, the largest number of students leaving District 7 enroll in charter schools. Since 2019-20, this number has grown by 19%, as compared to the overall number of middle school-aged residents, which has decreased by 11%.

Students Coming into the District:

- At the elementary school level, a greater number of students living in other districts come into District 7 schools (1,005) than District 7 residents who leave for other district schools (824).
- At the middle school level, about the same number of students living in other districts come into District 7 schools (517) as District 7 residents who leave for other district schools (525).

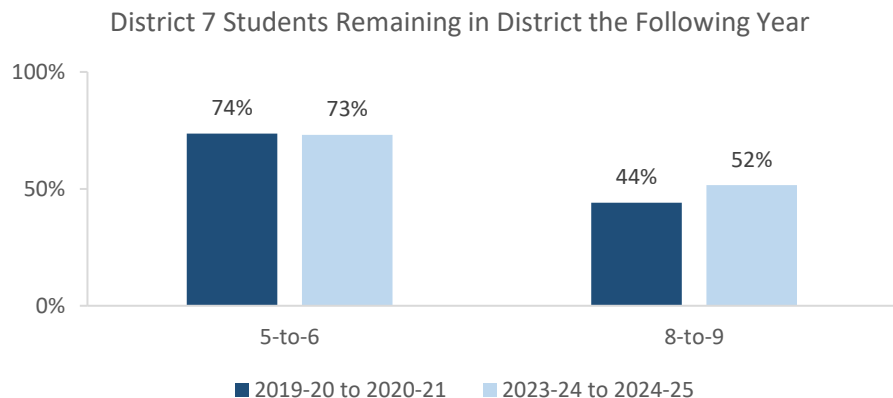
ARTICULATION TRENDS

Table 9: 5-to-6 Articulation (Where District 7 5th Graders Enrolled the Following Year)

	2019-20 to 2020-21		2023-24 to 2024-25	
	#	%	#	%
District 7 Schools	914	74%	651	73%
Other District Schools	114	9%	70	8%
D75 Schools	4	0%	2	0%
D79 Schools	0	0%	0	0%
Charter Schools	152	12%	136	15%
Non-Public Schools	7	1%	0	0%
Out of NYC	45	4%	19	2%
Other	6	0%	12	1%
Total	1,242	100%	890	100%

Table 10: 8-to-9 Articulation (Where District 7 8th Graders Enrolled the Following Year)

	2019-20 to 2020-21		2023-24 to 2024-25	
	#	%	#	%
District 7 Schools	468	44%	453	52%
Other District Schools	464	44%	329	37%
D75 Schools	1	0%	1	0%
D79 Schools	2	0%	1	0%
Charter Schools	70	7%	59	7%
Non-Public Schools	12	1%	8	1%
Out of NYC	34	3%	22	3%
Other	12	1%	5	1%
Total	1,063	100%	878	100%



- Citywide, the average percent of graduating 5th graders who remain at a district school in the same district for 6th grade is 73%; for graduating 8th graders, the average percent of students who remain in the same district for 9th grade is 37%.

SCHOOL COUNTS BY ENROLLMENT RANGE

Table 11: District 7 School Counts by Enrollment Range

Enrollment Range	School Level							
	ECC	ES	MS	HS	K-8	6-12	K-12	Total
Less than 150	0	0	1	1	1	0	0	3
150-249	0	5	3	5	1	0	0	14
250-349	0	6	1	2	0	0	0	9
350-449	0	2	0	3	0	1	0	6
450-549	0	0	0	1	1	1	0	3
550+	0	0	0	2	2	2	0	6
<i>Total</i>	0	13	5	14	5	4	0	41

Number of Schools with Enrollment in Bottom 25% by School District - 2024-25



Source: Audited Register; includes district schools only; excludes pre-K centers and transfer schools.

ENROLLMENT VS. CAPACITY

Table 12: District 7 Enrollment vs. Capacity - Grades K-5

	Neighborhood(s)	Count of Schools	Enrollment	Capacity	Seat Excess / (Deficit)
District 7	N/A	18	4,631	6,688	2,057
Sub-District 1	Concourse	3	850	1,543	693
Sub-District 2	Mott Haven	6	1,349	1,948	599
Sub-District 3	Melrose	9	2,432	3,197	765

Table 13: District 7 Enrollment vs. Capacity - Grades 6-8

	Neighborhood(s)	Count of Schools	Enrollment	Capacity	Seat Excess / (Deficit)
District 7	N/A	13	2,462	3,705	1,243
Sub-District 1	Concourse	3	609	742	133
Sub-District 2	Mott Haven	2	447	804	357
Sub-District 3	Melrose	8	1,406	2,159	753

Source: Enrollment from 2024-25 Audited Register and grade-level capacity estimated from 2023-24 Blue Book; does not include new or planned capacity in 2024-25 and beyond.

BUILDING UTILIZATION

Each year, the SCA publishes the Blue Book, a report analyzing the capacity and enrollment for every NYCPS building across the city. "Under-Utilized Buildings" reflects the projected count of buildings that have at least 150 excess seats.

Table 14: Count of NYCPS Buildings by Utilization Status

	District 7	Bronx
Count of Buildings	66	376
Under-Utilized (UU) Buildings	20	123
150-299 Excess Seats	9	50
300+ Excess Seats	11	73
Over-Utilized Buildings	2	40

Source: Enrollment and capacity from 2023-24 Blue Book; UU status is from a preliminary 2024-25 UU analysis, and accounts for building enrollment and planning changes implemented in 2024-25 and after.

DISTRICT 75

NYCPS's District 75 provides specialized instructional support for students with significant challenges, such as Autism Spectrum Disorder (ASD), significant cognitive delays, emotional disability, sensory impairment, and multiple disabilities. District 75 serves students through a number of different program models.

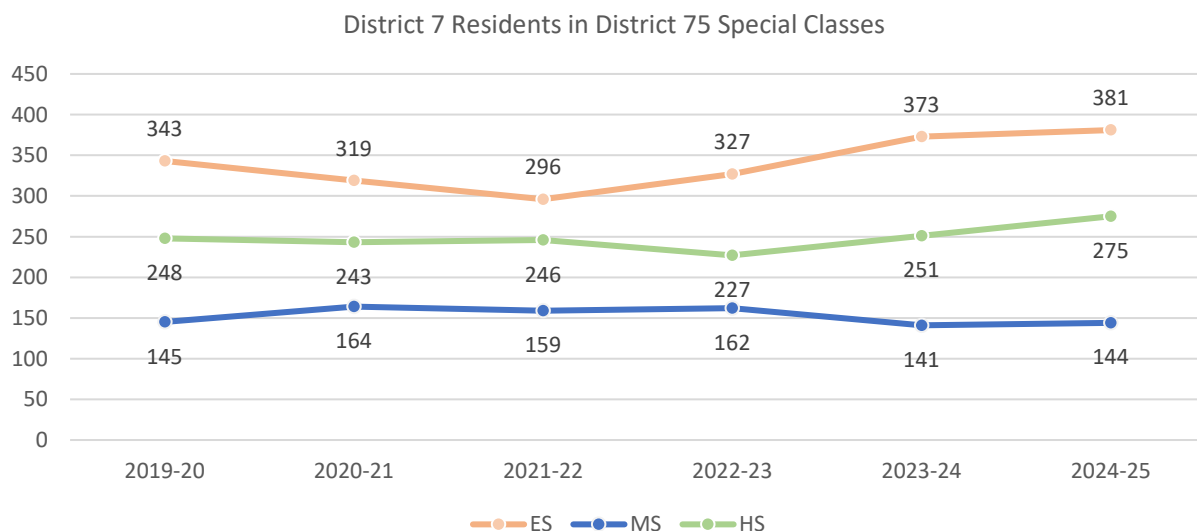
- Most District 75 students attend Special Class programs, which operate as distinct schools and may be located in standalone sites or co-located with district schools.
- A smaller number of students attend Inclusion Programs, in which students receive District 75 services within general education classes at a district school partner.

Table 15: District 75 Seat Need

	ES			MS			HS		
	District	Borough	City	District	Borough	City	District	Borough	City
Capacity	800	3,904	14,094	370	1,520	5,380	448	2,688	9,584
Residents	381	3,607	12,790	144	1,323	4,515	275	2,624	8,684
Deficit	No Deficit	No Deficit	No Deficit	No Deficit	No Deficit	No Deficit	No Deficit	No Deficit	No Deficit

Table 16: District 75 Residential Growth

	2019-20	2020-21	2021-22	2022-23	2023-24	2024-25	5yr Change	1yr Change
ES	343	319	296	327	373	381	2%	11%
MS	145	164	159	162	141	144	2%	-1%
HS	248	243	246	227	251	275	10%	11%
All Grades	736	726	701	716	765	800	5%	9%



Source: Audited Register

DISTRICT DEMOGRAPHICS

Table 17: Ethnicity

	K-5			6-8			9-12		
	District	Borough	City	District	Borough	City	District	Borough	City
% Asian	1%	5%	17%	1%	4%	17%	1%	6%	16%
% Hispanic	64%	63%	42%	65%	65%	44%	65%	62%	44%
% Black	31%	26%	22%	31%	26%	23%	32%	27%	24%
% White	1%	4%	15%	1%	3%	13%	1%	4%	12%
% Other	3%	2%	4%	1%	2%	3%	1%	2%	3%

Table 18: Special Populations

	K-5			6-8			9-12		
	District	Borough	City	District	Borough	City	District	Borough	City
Students with Disabilities	24%	23%	21%	25%	23%	21%	24%	22%	19%
English Language Learners	20%	21%	22%	12%	16%	15%	12%	16%	15%
Economically Disadvantaged	92%	90%	76%	92%	89%	77%	90%	87%	77%
Students in Temporary Housing	14%	14%	12%	15%	15%	12%	15%	14%	11%

Source: 2024-25 Audited Register; includes charter schools located in the district and may differ slightly from the NYCPS Demographic Snapshot.

SPECIAL PROGRAMS

Table 19: District 7 Special Program Summary

	District 7	Bronx
Schools with ASD Programs	4	32
<i>Horizon</i>	3	17
<i>Nest</i>	1	17
Schools with G&T Programs	3	17
Schools with Bilingual Ed Programs	10	91
<i>Dual Language (DL)</i>	4	28
<i>Transitional Bilingual Education (TBE)</i>	3	6
<i>DL/TBE</i>	3	57

Note: Schools with both *Horizon* and *Nest* programs are counted once in the top row but separately in the *Horizon* and *Nest* rows beneath.



Office of District Planning, 2025-2026

N
1 inch = 0.28 miles