

District 8

Data Summary

2026-2027 Strategic Planning Data Considerations

Contents

Citywide Enrollment	I
District Enrollment	2
Residential Population and District Retention	3
District ES and MS Enrollment Model ("In-Out Model")	5
Articulation Trends	6
School Counts by Enrollment Range	7
Enrollment vs. Capacity	8
Building Utilization	8
District 75	9
District Demographics	10
Special Programs	10

CITYWIDE ENROLLMENT (DISTRICT AND CHARTER), 2015-16 TO 2024-25

New York City Public Schools (NYCPS) is committed to thoughtful collaboration with districts and communities to collectively strengthen schools, support students and families, and respond to demographic and population changes in New York City.



Source: Audited Register and Charter Headcount; includes district and charter school enrollment only

- Enrollment in D1-32 schools decreased slightly in 2024-2025, remaining approximately stable compared to the steeper declines following the onset of the COVID-19 pandemic.
- Citywide, K-12 enrollment in District 1-32 schools and charter schools has declined by about 10% since its peak in the 2016-2017 school year.

DISTRICT ENROLLMENT

District 8 Enrollment by Grade Level and Year (District Schools Only)

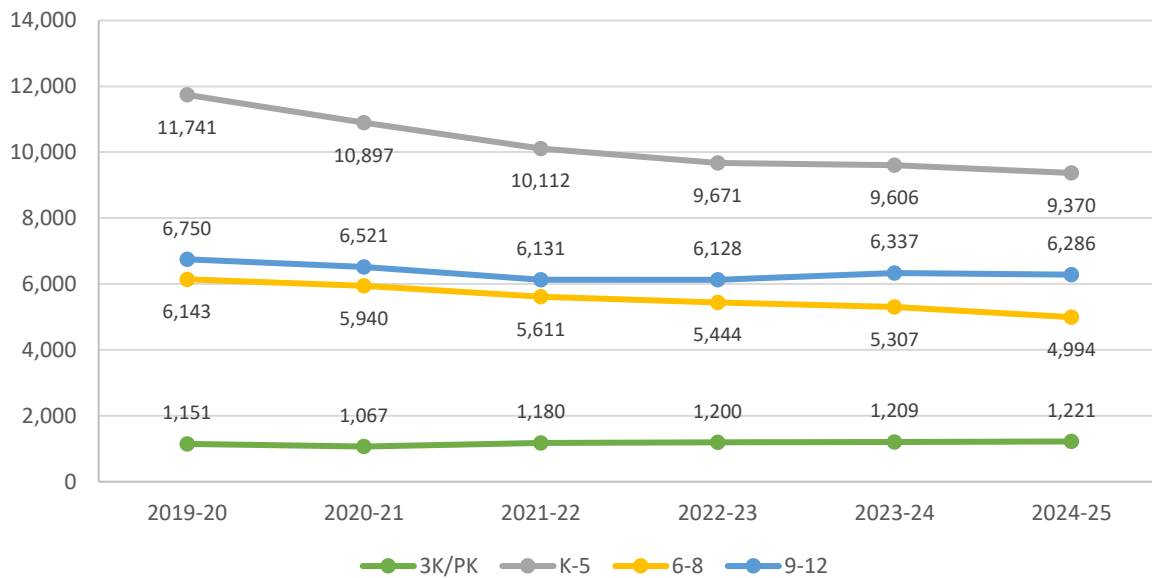


Table 1: District 8 Enrollment - 2019-20 to 2024-25

	2019-20	2020-21	2021-22	2022-23	2023-24	2024-25	1yr Change	5yr Change
3K	219	262	314	322	342	339	-1%	55%
PK	932	805	866	878	867	882	2%	-5%
K-5	11,741	10,897	10,112	9,671	9,606	9,370	-2%	-20%
6-8	6,143	5,940	5,611	5,444	5,307	4,994	-6%	-19%
9-12	6,750	6,521	6,131	6,128	6,337	6,286	-1%	-7%
Total	25,785	24,425	23,034	22,443	22,459	21,871	-3%	-15%
% Change YoY		-5.3%	-5.7%	-2.6%	0.1%	-2.6%		

Table 2: District 8 Entry Grade Enrollment - 2019-20 to 2024-25

	2019-20	2020-21	2021-22	2022-23	2023-24	2024-25	1yr Change	5yr Change
K	1,802	1,601	1,533	1,527	1,524	1,518	-0.4%	-16%
6	1,978	1,981	1,830	1,710	1,660	1,601	-3.6%	-19%
9	2,080	1,723	1,681	1,640	1,832	1,650	-9.9%	-21%

Source: Audited Register; includes enrollment in district schools only

RESIDENTIAL POPULATION AND DISTRICT RETENTION

District 8 K-12 Enrollment vs. Residential Population

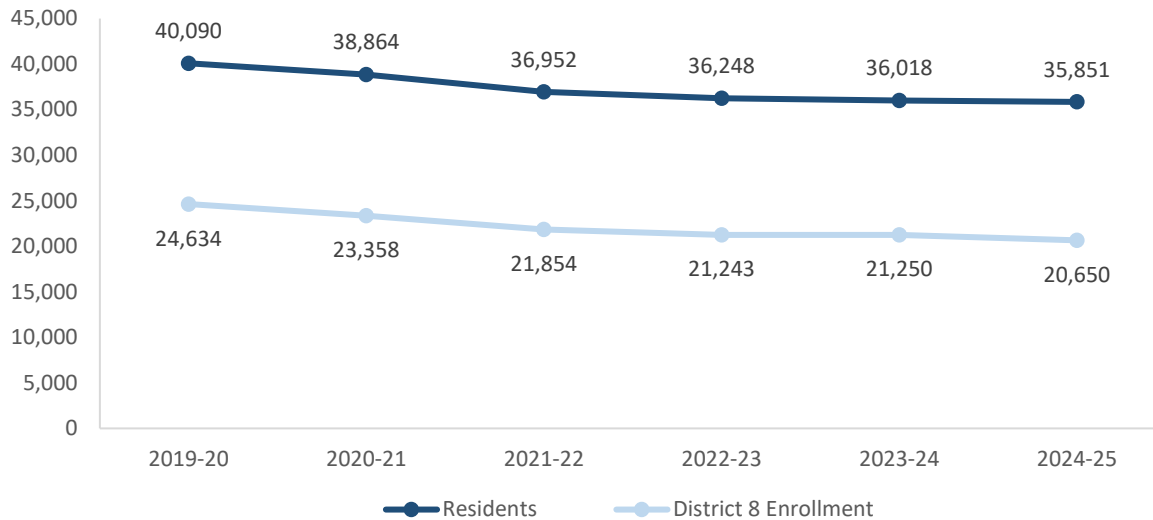


Table 3: District 8 Student Residential Population - 2019-20 to 2024-25

	2019-20	2020-21	2021-22	2022-23	2023-24	2024-25	1yr Change	5yr Change
K-5	17,902	16,975	15,985	15,583	15,489	15,272	-1%	-15%
6-8	9,284	9,253	8,793	8,564	8,353	8,255	-1%	-11%
9-12	12,904	12,636	12,174	12,101	12,176	12,324	1%	-4%
Total	40,090	38,864	36,952	36,248	36,018	35,851	0%	-11%
% Change YoY		-3.1%	-4.9%	-1.9%	-0.6%	-0.5%		

- Between 2019-20 and 2024-25, the K-5 residential population in District 8 declined by 15%.
- During this time, the 6-8 residential population in District 8 declined by 11%.
- Citywide, the K-12 residential population declined by 8% since 2019-20.

Source: Residential population is the sum of students attending any NYCPS school, charter or non-public school; as such, this metric will not capture students who are home schooled, have dropped out, or are otherwise not enrolled in these school options.

Table 4: Elementary School District Retention (Where District 8 Residents Enroll in School)

	2019-20	2020-21	2021-22	2022-23	2023-24	2024-25	% of Residents	
							2019-20	2024-25
District 8 Schools	10,677	9,809	9,175	8,761	8,617	8,315	60%	54%
Other District Schools	1,446	1,496	1,335	1,332	1,337	1,353	8%	9%
Charter Schools	3,731	3,771	3,666	3,679	3,766	3,770	21%	25%
Non-Public Schools	1,549	1,368	1,280	1,273	1,197	1,240	9%	8%
Other	499	531	529	538	572	594	3%	4%
Total	17,902	16,975	15,985	15,583	15,489	15,272	100%	100%
% Change YoY		-5.2%	-5.8%	-2.5%	-0.6%	-1.4%		

Table 5: Middle School District Retention (Where District 8 Residents Enroll in School)

	2019-20	2020-21	2021-22	2022-23	2023-24	2024-25	% of Residents	
							2019-20	2024-25
District 8 Schools	5,204	5,040	4,649	4,423	4,196	3,969	56%	48%
Other District Schools	1,115	1,082	1,069	1,053	1,065	1,114	12%	13%
Charter Schools	1,686	1,895	1,965	2,043	2,111	2,186	18%	26%
Non-Public Schools	1,015	955	845	805	763	749	11%	9%
Other	264	281	265	240	218	237	3%	3%
Total	9,284	9,253	8,793	8,564	8,353	8,255	100%	100%
% Change YoY		-0.3%	-5.0%	-2.6%	-2.5%	-1.2%		

Table 6: Where District 8 Students Live - Grades K-5

	K-5		% of Students	
	2019-20	2024-25	2019-20	2024-25
District 8	10,677	8,315	91%	89%
Other District	1,064	1,055	9%	11%
	11,741	9,370	100%	100%

Table 7: Where District 8 Students Live - Grades 6-8

	6-8		% of Students	
	2019-20	2024-25	2019-20	2024-25
District 8	5,204	3,969	85%	79%
Other District	939	1,025	15%	21%
	6,143	4,994	100%	100%

Citywide Trends

- Citywide, the average **District Retention Rate** (the percent of students living in a district who enroll in a district school in that district) is 54% for ES and 49% for MS.
- Citywide, the average **District Enrollment Rate** (the percent of students enrolled in district schools who live in that district) is 83% for ES and 79% for MS.

Source: Audited Register for NYCPS and charter schools; NYCPS administrative data for non-public schools

DISTRICT ES AND MS ENROLLMENT MODEL ("IN-OUT MODEL")

The table below depicts the prevailing trends for students coming into the district ("IN") and leaving the district ("OUT") to help identify the primary drivers of district school enrollment change.

Table 8: In-Out Model - ES and MS

	ES			MS		
	2019-20	2024-25	% Chg	2019-20	2024-25	% Chg
Residents of District 8	17,902	15,272	-15%	9,284	8,255	-11%
- OUT to other districts	-1,446	-1,353	-6%	-1,115	-1,114	0%
- OUT to D75/D79	-499	-594	19%	-264	-237	-10%
- OUT to charters	-3,731	-3,770	1%	-1,686	-2,186	30%
- OUT to Non-Public Schools	-1,549	-1,240	-20%	-1,015	-749	-26%
Total OUT	-7,225	-6,957	-4%	-4,080	-4,286	5%
+ IN from other districts	+1,064	+1,055	-1%	+939	+1,025	9%
D8 Enrollment	11,741	9,370	-20%	6,143	4,994	-19%

Source: Audited Register for NYCPS and charter schools; NYCPS administrative data for non-public schools

Students Leaving the District:

- At the elementary school level, the largest number of students leaving District 8 enroll in charter schools. Since 2019-20, this number has remained about the same, as compared to the overall number of elementary school-aged residents, which has decreased by 15%.
- At the middle school level, the largest number of students leaving District 8 enroll in charter schools. Since 2019-20, this number has grown by 30%, as compared to the overall number of middle school-aged residents, which has decreased by 11%.

Students Coming into the District:

- At the elementary school level, a smaller number of students living in other districts come into District 8 schools (1,055) than District 8 residents who leave for other district schools (1,353).
- At the middle school level, about the same number of students living in other districts come into District 8 schools (1,025) as District 8 residents who leave for other district schools (1,114).

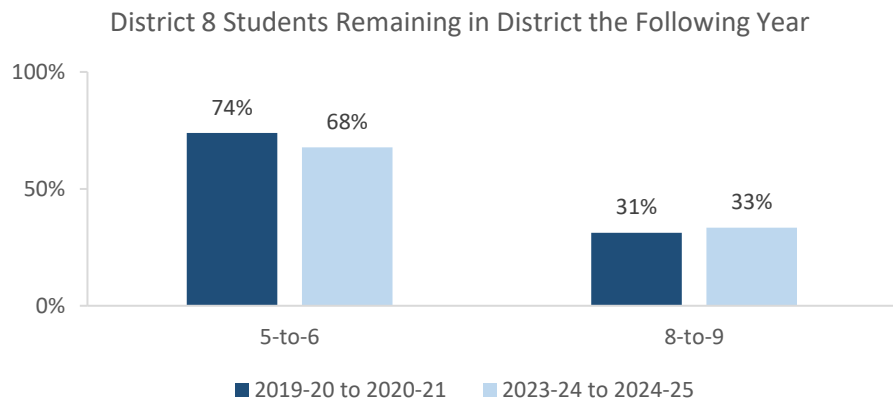
ARTICULATION TRENDS

Table 9: 5-to-6 Articulation (Where District 8 5th Graders Enrolled the Following Year)

	2019-20 to 2020-21		2023-24 to 2024-25	
	#	%	#	%
District 8 Schools	1,594	74%	1,159	68%
Other District Schools	237	11%	245	14%
D75 Schools	0	0%	2	0%
D79 Schools	0	0%	0	0%
Charter Schools	182	8%	180	11%
Non-Public Schools	22	1%	29	2%
Out of NYC	91	4%	82	5%
Other	31	1%	14	1%
Total	2,157	100%	1,711	100%

Table 10: 8-to-9 Articulation (Where District 8 8th Graders Enrolled the Following Year)

	2019-20 to 2020-21		2023-24 to 2024-25	
	#	%	#	%
District 8 Schools	656	31%	631	33%
Other District Schools	1,055	50%	833	44%
D75 Schools	3	0%	6	0%
D79 Schools	0	0%	0	0%
Charter Schools	161	8%	164	9%
Non-Public Schools	80	4%	146	8%
Out of NYC	85	4%	97	5%
Other	62	3%	16	1%
Total	2,102	100%	1,893	100%



- Citywide, the average percent of graduating 5th graders who remain at a district school in the same district for 6th grade is 73%; for graduating 8th graders, the average percent of students who remain in the same district for 9th grade is 37%.

SCHOOL COUNTS BY ENROLLMENT RANGE

Table 11: District 8 School Counts by Enrollment Range

Enrollment Range	School Level							
	ECC	ES	MS	HS	K-8	6-12	K-12	Total
Less than 150	0	0	0	0	0	0	0	0
150-249	0	2	5	4	0	0	0	11
250-349	0	3	2	4	0	0	0	9
350-449	0	10	2	6	0	1	0	19
450-549	0	3	2	0	0	1	0	6
550+	0	3	1	1	1	1	0	7
<i>Total</i>	0	21	12	15	1	3	0	52

Number of Schools with Enrollment in Bottom 25% by School District - 2024-25



Source: Audited Register; includes district schools only; excludes pre-K centers and transfer schools.

ENROLLMENT VS. CAPACITY

Table 12: District 8 Enrollment vs. Capacity - Grades K-5

	Neighborhood(s)	Count of Schools	Enrollment	Capacity	Seat Excess / (Deficit)
District 8	N/A	22	9,370	11,487	2,117
Sub-District 1	Hunts Point	7	2,352	3,648	1,296
Sub-District 2	Soundview	10	4,270	4,989	719
Sub-District 3	Throgs Neck	5	2,748	2,850	102

Table 13: District 8 Enrollment vs. Capacity - Grades 6-8

	Neighborhood(s)	Count of Schools	Enrollment	Capacity	Seat Excess / (Deficit)
District 8	N/A	16	4,994	7,135	2,141
Sub-District 1	Hunts Point	4	913	1,667	754
Sub-District 2	Soundview	8	2,489	3,628	1,139
Sub-District 3	Throgs Neck	4	1,592	1,840	248

Source: Enrollment from 2024-25 Audited Register and grade-level capacity estimated from 2023-24 Blue Book; does not include new or planned capacity in 2024-25 and beyond.

BUILDING UTILIZATION

Each year, the SCA publishes the Blue Book, a report analyzing the capacity and enrollment for every NYCPS building across the city. "Under-Utilized Buildings" reflects the projected count of buildings that have at least 150 excess seats.

Table 14: Count of NYCPS Buildings by Utilization Status

	District 8	Bronx
Count of Buildings	49	376
Under-Utilized (UU) Buildings	19	123
150-299 Excess Seats	10	50
300+ Excess Seats	9	73
Over-Utilized Buildings	5	40

Source: Enrollment and capacity from 2023-24 Blue Book; UU status is from a preliminary 2024-25 UU analysis, and accounts for building enrollment and planning changes implemented in 2024-25 and after.

DISTRICT 75

NYCPS's District 75 provides specialized instructional support for students with significant challenges, such as Autism Spectrum Disorder (ASD), significant cognitive delays, emotional disability, sensory impairment, and multiple disabilities. District 75 serves students through a number of different program models.

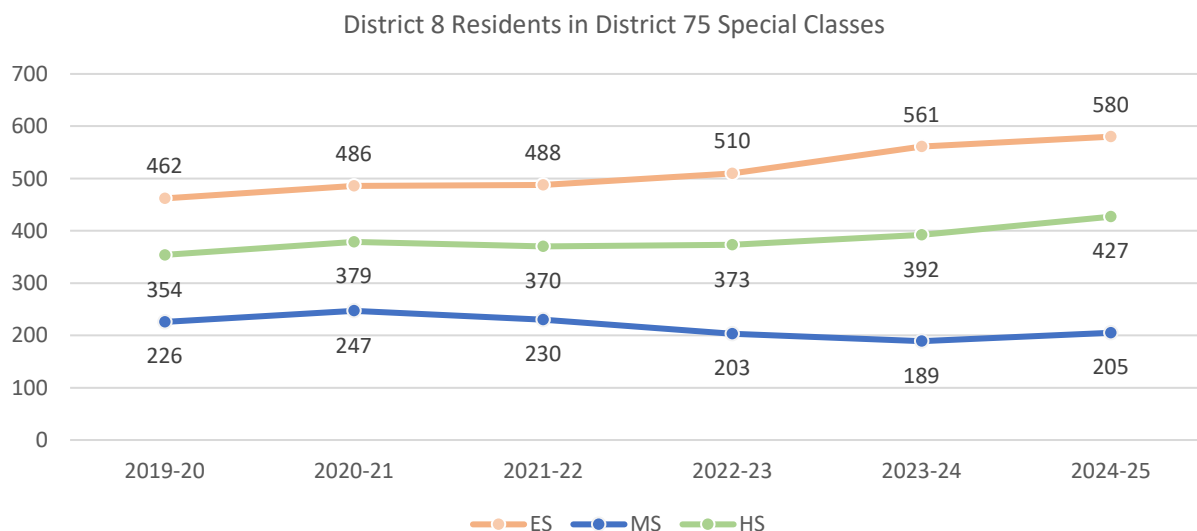
- Most District 75 students attend Special Class programs, which operate as distinct schools and may be located in standalone sites or co-located with district schools.
- A smaller number of students attend Inclusion Programs, in which students receive District 75 services within general education classes at a district school partner.

Table 15: District 75 Seat Need

	ES			MS			HS		
	District	Borough	City	District	Borough	City	District	Borough	City
Capacity	584	3,904	14,094	170	1,520	5,380	244	2,688	9,584
Residents	580	3,607	12,790	205	1,323	4,515	427	2,624	8,684
Deficit	No Deficit	No Deficit	No Deficit	-35	No Deficit	No Deficit	-183	No Deficit	No Deficit

Table 16: District 75 Residential Growth

	2019-20	2020-21	2021-22	2022-23	2023-24	2024-25	5yr Change	1yr Change
ES	462	486	488	510	561	580	3%	26%
MS	226	247	230	203	189	205	8%	-9%
HS	354	379	370	373	392	427	9%	21%
All Grades	1,042	1,112	1,088	1,086	1,142	1,212	6%	16%



Source: Audited Register

DISTRICT DEMOGRAPHICS

Table 17: Ethnicity

	K-5			6-8			9-12		
	District	Borough	City	District	Borough	City	District	Borough	City
% Asian	8%	5%	17%	6%	4%	17%	5%	6%	16%
% Hispanic	65%	63%	42%	67%	65%	44%	59%	62%	44%
% Black	20%	26%	22%	21%	26%	23%	29%	27%	24%
% White	5%	4%	15%	4%	3%	13%	4%	4%	12%
% Other	2%	2%	4%	2%	2%	3%	2%	2%	3%

Table 18: Special Populations

	K-5			6-8			9-12		
	District	Borough	City	District	Borough	City	District	Borough	City
Students with Disabilities	23%	23%	21%	24%	23%	21%	25%	22%	19%
English Language Learners	19%	21%	22%	16%	16%	15%	14%	16%	15%
Economically Disadvantaged	88%	90%	76%	87%	89%	77%	88%	87%	77%
Students in Temporary Housing	11%	14%	12%	12%	15%	12%	9%	14%	11%

Source: 2024-25 Audited Register; includes charter schools located in the district and may differ slightly from the NYCPS Demographic Snapshot.

SPECIAL PROGRAMS

Table 19: District 8 Special Program Summary

	District 8	Bronx
Schools with ASD Programs	5	32
<i>Horizon</i>	2	17
<i>Nest</i>	4	17
Schools with G&T Programs	2	17
Schools with Bilingual Ed Programs	6	91
<i>Dual Language (DL)</i>	4	28
<i>Transitional Bilingual Education (TBE)</i>	0	6
<i>DL/TBE</i>	2	57

Note: Schools with both *Horizon* and *Nest* programs are counted once in the top row but separately in the *Horizon* and *Nest* rows beneath.

