

# District 9

# Data Summary

2026-2027 Strategic Planning Data Considerations

## Contents

Citywide Enrollment	I
District Enrollment	2
Residential Population and District Retention	3
District ES and MS Enrollment Model ("In-Out Model")	5
Articulation Trends	6
School Counts by Enrollment Range	7
Enrollment vs. Capacity	8
Building Utilization	8
District 75	9
District Demographics	10
Special Programs	10

## CITYWIDE ENROLLMENT (DISTRICT AND CHARTER), 2015-16 TO 2024-25

New York City Public Schools (NYCPS) is committed to thoughtful collaboration with districts and communities to collectively strengthen schools, support students and families, and respond to demographic and population changes in New York City.



Source: Audited Register and Charter Headcount; includes district and charter school enrollment only

- Enrollment in D1-32 schools decreased slightly in 2024-2025, remaining approximately stable compared to the steeper declines following the onset of the COVID-19 pandemic.
- Citywide, K-12 enrollment in District 1-32 schools and charter schools has declined by about 10% since its peak in the 2016-2017 school year.

## DISTRICT ENROLLMENT

District 9 Enrollment by Grade Level and Year (District Schools Only)

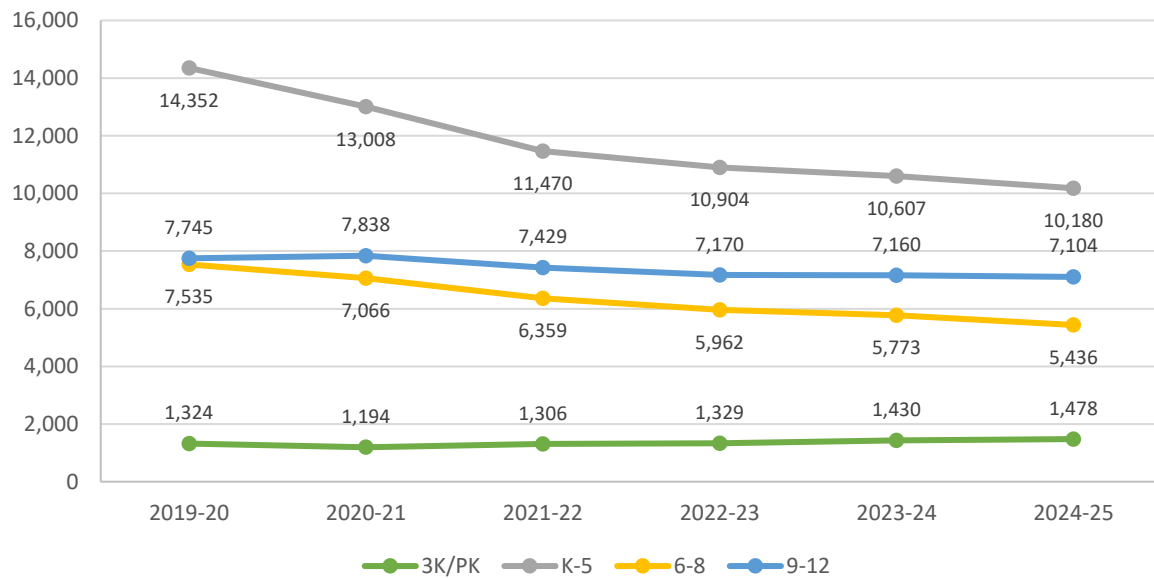


Table 1: District 9 Enrollment - 2019-20 to 2024-25

	2019-20	2020-21	2021-22	2022-23	2023-24	2024-25	1yr Change	5yr Change
<b>3K</b>	397	356	423	456	479	542	13%	37%
<b>PK</b>	927	838	883	873	951	936	-2%	1%
<b>K-5</b>	14,352	13,008	11,470	10,904	10,607	10,180	-4%	-29%
<b>6-8</b>	7,535	7,066	6,359	5,962	5,773	5,436	-6%	-28%
<b>9-12</b>	7,745	7,838	7,429	7,170	7,160	7,104	-1%	-8%
<b>Total</b>	<b>30,956</b>	<b>29,106</b>	<b>26,564</b>	<b>25,365</b>	<b>24,970</b>	<b>24,198</b>	<b>-3%</b>	<b>-22%</b>
<b>% Change YoY</b>		-6.0%	-8.7%	-4.5%	-1.6%	-3.1%		

Table 2: District 9 Entry Grade Enrollment - 2019-20 to 2024-25

	2019-20	2020-21	2021-22	2022-23	2023-24	2024-25	1yr Change	5yr Change
<b>K</b>	2,189	1,761	1,726	1,705	1,586	1,530	-3.5%	-30%
<b>6</b>	2,449	2,216	2,022	1,927	1,819	1,685	-7.4%	-31%
<b>9</b>	2,269	2,119	2,050	1,960	2,067	1,854	-10.3%	-18%

Source: Audited Register; includes enrollment in district schools only

## RESIDENTIAL POPULATION AND DISTRICT RETENTION

District 9 K-12 Enrollment vs. Residential Population

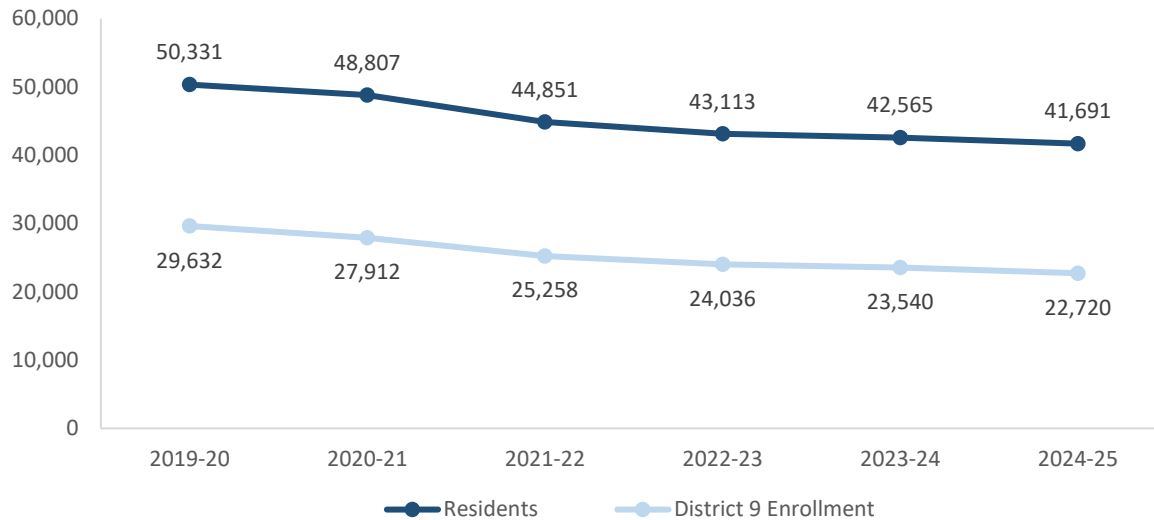


Table 3: District 9 Student Residential Population - 2019-20 to 2024-25

	2019-20	2020-21	2021-22	2022-23	2023-24	2024-25	1yr Change	5yr Change
K-5	22,624	21,480	19,370	18,653	18,519	17,893	-3%	-21%
6-8	11,469	11,133	10,363	9,935	9,658	9,416	-3%	-18%
9-12	16,238	16,194	15,118	14,525	14,388	14,382	0%	-11%
<b>Total</b>	<b>50,331</b>	<b>48,807</b>	<b>44,851</b>	<b>43,113</b>	<b>42,565</b>	<b>41,691</b>	<b>-2%</b>	<b>-17%</b>
% Change YoY		-3.0%	-8.1%	-3.9%	-1.3%	-2.1%		

- Between 2019-20 and 2024-25, the K-5 residential population in District 9 declined by 21%.
- During this time, the 6-8 residential population in District 9 declined by 18%.
- Citywide, the K-12 residential population declined by 8% since 2019-20.

Source: Residential population is the sum of students attending any NYCPS school, charter or non-public school; as such, this metric will not capture students who are home schooled, have dropped out, or are otherwise not enrolled in these school options.

Table 4: Elementary School District Retention (Where District 9 Residents Enroll in School)

	2019-20	2020-21	2021-22	2022-23	2023-24	2024-25	% of Residents	
							2019-20	2024-25
District 9 Schools	13,302	11,989	10,487	9,915	9,544	8,990	59%	50%
Other District Schools	2,120	2,051	1,698	1,626	1,652	1,674	9%	9%
Charter Schools	5,765	6,091	5,925	5,803	5,882	5,891	25%	33%
Non-Public Schools	856	752	706	700	752	615	4%	3%
Other	581	597	554	609	689	723	3%	4%
<b>Total</b>	<b>22,624</b>	<b>21,480</b>	<b>19,370</b>	<b>18,653</b>	<b>18,519</b>	<b>17,893</b>	<b>100%</b>	<b>100%</b>
<b>% Change YoY</b>		-5.1%	-9.8%	-3.7%	-0.7%	-3.4%		

Table 5: Middle School District Retention (Where District 9 Residents Enroll in School)

	2019-20	2020-21	2021-22	2022-23	2023-24	2024-25	% of Residents	
							2019-20	2024-25
District 9 Schools	6,417	6,023	5,381	5,087	4,898	4,537	56%	48%
Other District Schools	1,668	1,575	1,448	1,255	1,174	1,233	15%	13%
Charter Schools	2,538	2,762	2,806	2,892	2,936	3,017	22%	32%
Non-Public Schools	498	437	408	418	380	368	4%	4%
Other	348	336	320	283	270	261	3%	3%
<b>Total</b>	<b>11,469</b>	<b>11,133</b>	<b>10,363</b>	<b>9,935</b>	<b>9,658</b>	<b>9,416</b>	<b>100%</b>	<b>100%</b>
<b>% Change YoY</b>		-2.9%	-6.9%	-4.1%	-2.8%	-2.5%		

Table 6: Where District 9 Students Live - Grades K-5

	K-5		% of Students	
	2019-20	2024-25	2019-20	2024-25
District 9	13,302	8,990	93%	88%
Other District	1,050	1,190	7%	12%
	14,352	10,180	100%	100%

Table 7: Where District 9 Students Live - Grades 6-8

	6-8		% of Students	
	2019-20	2024-25	2019-20	2024-25
District 9	6,417	4,537	85%	83%
Other District	1,118	899	15%	17%
	7,535	5,436	100%	100%

### Citywide Trends

- Citywide, the average **District Retention Rate** (the percent of students living in a district who enroll in a district school in that district ) is 54% for ES and 49% for MS.
- Citywide, the average **District Enrollment Rate** (the percent of students enrolled in district schools who live in that district) is 83% for ES and 79% for MS.

Source: Audited Register for NYCPS and charter schools; NYCPS administrative data for non-public schools

## DISTRICT ES AND MS ENROLLMENT MODEL ("IN-OUT MODEL")

The table below depicts the prevailing trends for students coming into the district ("IN") and leaving the district ("OUT") to help identify the primary drivers of district school enrollment change.

**Table 8: In-Out Model - ES and MS**

	ES			MS		
	2019-20	2024-25	% Chg	2019-20	2024-25	% Chg
<b>Residents of District 9</b>	<b>22,624</b>	<b>17,893</b>	<b>-21%</b>	<b>11,469</b>	<b>9,416</b>	<b>-18%</b>
- OUT to other districts	-2,120	-1,674	-21%	-1,668	-1,233	-26%
- OUT to D75/D79	-581	-723	24%	-348	-261	-25%
- OUT to charters	-5,765	-5,891	2%	-2,538	-3,017	19%
- OUT to Non-Public Schools	-856	-615	-28%	-498	-368	-26%
<b>Total OUT</b>	<b>-9,322</b>	<b>-8,903</b>	<b>-4%</b>	<b>-5,052</b>	<b>-4,879</b>	<b>-3%</b>
<b>+ IN from other districts</b>	<b>+1,050</b>	<b>+1,190</b>	<b>13%</b>	<b>+1,118</b>	<b>+899</b>	<b>-20%</b>
<b>D9 Enrollment</b>	<b>14,352</b>	<b>10,180</b>	<b>-29%</b>	<b>7,535</b>	<b>5,436</b>	<b>-28%</b>

*Source: Audited Register for NYCPS and charter schools; NYCPS administrative data for non-public schools*

### Students Leaving the District:

- At the elementary school level, the largest number of students leaving District 9 enroll in charter schools. Since 2019-20, this number has remained about the same, as compared to the overall number of elementary school-aged residents, which has decreased by 21%.
- At the middle school level, the largest number of students leaving District 9 enroll in charter schools. Since 2019-20, this number has grown by 19%, as compared to the overall number of middle school-aged residents, which has decreased by 18%.

### Students Coming into the District:

- At the elementary school level, a smaller number of students living in other districts come into District 9 schools (1,190) than District 9 residents who leave for other district schools (1,674).
- At the middle school level, a smaller number of students living in other districts come into District 9 schools (899) than District 9 residents who leave for other district schools (1,233).

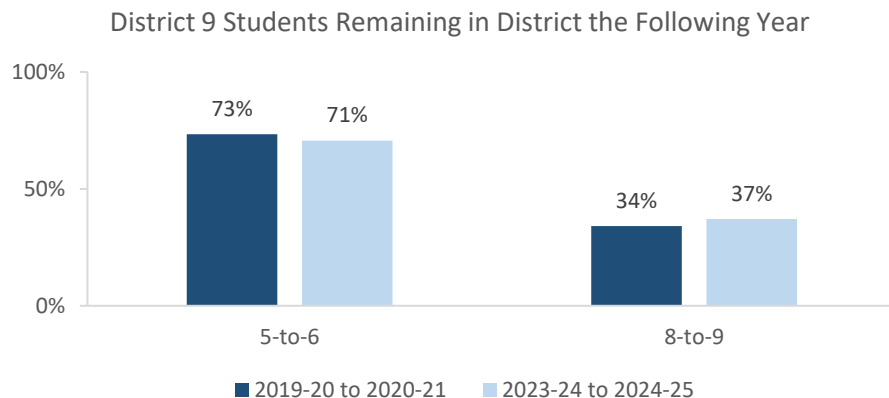
## ARTICULATION TRENDS

Table 9: 5-to-6 Articulation (Where District 9 5th Graders Enrolled the Following Year)

	2019-20 to 2020-21		2023-24 to 2024-25	
	#	%	#	%
District 9 Schools	1,836	73%	1,359	71%
Other District Schools	293	12%	211	11%
D75 Schools	1	0%	6	0%
D79 Schools	0	0%	0	0%
Charter Schools	240	10%	218	11%
Non-Public Schools	13	1%	8	0%
Out of NYC	97	4%	105	5%
Other	21	1%	19	1%
<b>Total</b>	<b>2,501</b>	<b>100%</b>	<b>1,926</b>	<b>100%</b>

Table 10: 8-to-9 Articulation (Where District 9 8th Graders Enrolled the Following Year)

	2019-20 to 2020-21		2023-24 to 2024-25	
	#	%	#	%
District 9 Schools	881	34%	752	37%
Other District Schools	1,390	54%	942	46%
D75 Schools	3	0%	4	0%
D79 Schools	2	0%	1	0%
Charter Schools	172	7%	190	9%
Non-Public Schools	29	1%	31	2%
Out of NYC	81	3%	87	4%
Other	31	1%	24	1%
<b>Total</b>	<b>2,589</b>	<b>100%</b>	<b>2,031</b>	<b>100%</b>



- Citywide, the average percent of graduating 5th graders who remain at a district school in the same district for 6th grade is 73%; for graduating 8th graders, the average percent of students who remain in the same district for 9th grade is 37%.

## SCHOOL COUNTS BY ENROLLMENT RANGE

Table 11: District 9 School Counts by Enrollment Range

Enrollment Range	School Level							
	ECC	ES	MS	HS	K-8	6-12	K-12	Total
Less than 150	1	1	6	2	0	0	0	10
150-249	0	3	3	1	1	0	0	8
250-349	0	11	7	4	0	0	0	22
350-449	0	8	1	8	0	3	0	20
450-549	0	3	0	0	0	2	0	5
550+	0	1	0	0	1	2	0	4
<i>Total</i>	1	27	17	15	2	7	0	69

Number of Schools with Enrollment in Bottom 25% by School District - 2024-25



Source: Audited Register; includes district schools only; excludes pre-K centers and transfer schools.



## ENROLLMENT VS. CAPACITY

Table 12: District 9 Enrollment vs. Capacity - Grades K-5

	Neighborhood(s)	Count of Schools	Enrollment	Capacity	Seat Excess / (Deficit)
<b>District 9</b>	<b>N/A</b>	<b>30</b>	<b>10,180</b>	<b>13,839</b>	<b>3,659</b>
Sub-District 1	Highbridge South	10	3,800	5,434	1,634
Sub-District 2	Highbridge North	7	2,161	2,808	647
Sub-District 3	Mount Eden	7	2,526	2,980	454
Sub-District 4	Concourse	6	1,693	2,617	924

Table 13: District 9 Enrollment vs. Capacity - Grades 6-8

	Neighborhood(s)	Count of Schools	Enrollment	Capacity	Seat Excess / (Deficit)
<b>District 9</b>	<b>N/A</b>	<b>26</b>	<b>5,436</b>	<b>8,985</b>	<b>3,549</b>
Sub-District 1	Highbridge South	10	2,269	3,338	1,069
Sub-District 2	Highbridge North	3	553	435	(118)
Sub-District 3	Mount Eden	6	1,350	2,260	910
Sub-District 4	Concourse	7	1,264	2,952	1,688

Source: Enrollment from 2024-25 Audited Register and grade-level capacity estimated from 2023-24 Blue Book; does not include new or planned capacity in 2024-25 and beyond.

## BUILDING UTILIZATION

Each year, the SCA publishes the Blue Book, a report analyzing the capacity and enrollment for every NYCPS building across the city. "Under-Utilized Buildings" reflects the projected count of buildings that have at least 150 excess seats.

Table 14: Count of NYCPS Buildings by Utilization Status

	District 9	Bronx
<b>Count of Buildings</b>	<b>73</b>	<b>376</b>
<b>Under-Utilized (UU) Buildings</b>	<b>23</b>	<b>123</b>
150-299 Excess Seats	7	50
300+ Excess Seats	16	73
<b>Over-Utilized Buildings</b>	<b>5</b>	<b>40</b>

Source: Enrollment and capacity from 2023-24 Blue Book; UU status is from a preliminary 2024-25 UU analysis, and accounts for building enrollment and planning changes implemented in 2024-25 and after.

## DISTRICT 75

NYCPS's District 75 provides specialized instructional support for students with significant challenges, such as Autism Spectrum Disorder (ASD), significant cognitive delays, emotional disability, sensory impairment, and multiple disabilities. District 75 serves students through a number of different program models.

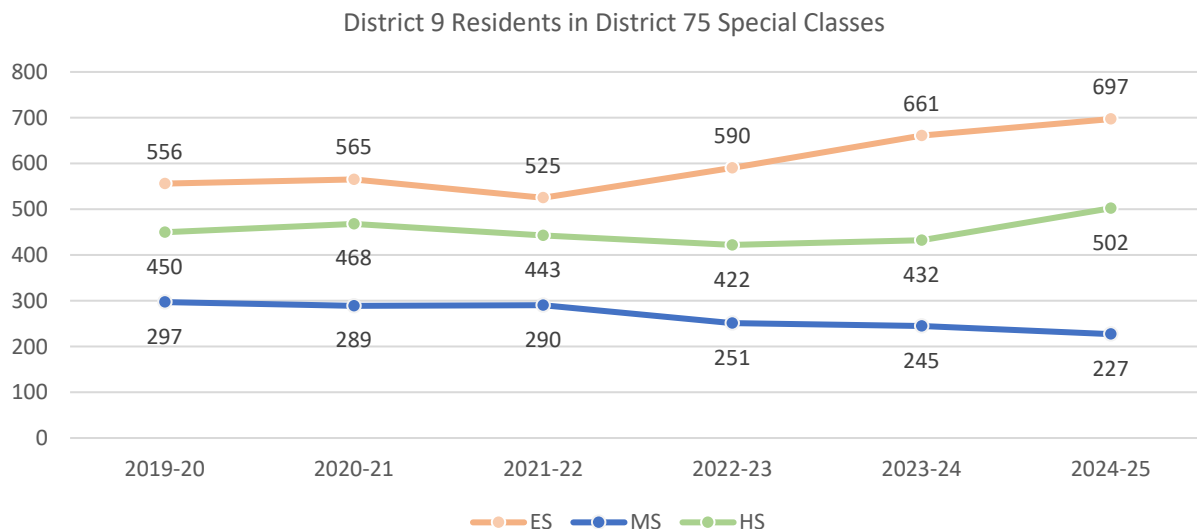
- Most District 75 students attend Special Class programs, which operate as distinct schools and may be located in standalone sites or co-located with district schools.
- A smaller number of students attend Inclusion Programs, in which students receive District 75 services within general education classes at a district school partner.

Table 15: District 75 Seat Need

	ES			MS			HS		
	District	Borough	City	District	Borough	City	District	Borough	City
<b>Capacity</b>	312	3,904	14,094	242	1,520	5,380	20	2,688	9,584
<b>Residents</b>	697	3,607	12,790	227	1,323	4,515	502	2,624	8,684
<b>Deficit</b>	-385	No Deficit	No Deficit	No Deficit	No Deficit	No Deficit	-482	No Deficit	No Deficit

Table 16: District 75 Residential Growth

	2019-20	2020-21	2021-22	2022-23	2023-24	2024-25	5yr Change	1yr Change
<b>ES</b>	556	565	525	590	661	697	5%	25%
<b>MS</b>	297	289	290	251	245	227	-7%	-24%
<b>HS</b>	450	468	443	422	432	502	16%	12%
<b>All Grades</b>	1,303	1,322	1,258	1,263	1,338	1,426	7%	9%



Source: Audited Register

## DISTRICT DEMOGRAPHICS

Table 17: Ethnicity

	K-5			6-8			9-12		
	District	Borough	City	District	Borough	City	District	Borough	City
% Asian	1%	5%	17%	1%	4%	17%	1%	6%	16%
% Hispanic	66%	63%	42%	68%	65%	44%	69%	62%	44%
% Black	29%	26%	22%	29%	26%	23%	28%	27%	24%
% White	1%	4%	15%	1%	3%	13%	0.9%	4%	12%
% Other	2%	2%	4%	1%	2%	3%	1%	2%	3%

Table 18: Special Populations

	K-5			6-8			9-12		
	District	Borough	City	District	Borough	City	District	Borough	City
Students with Disabilities	23%	23%	21%	25%	23%	21%	22%	22%	19%
English Language Learners	26%	21%	22%	18%	16%	15%	22%	16%	15%
Economically Disadvantaged	94%	90%	76%	94%	89%	77%	94%	87%	77%
Students in Temporary Housing	17%	14%	12%	18%	15%	12%	18%	14%	11%

Source: 2024-25 Audited Register; includes charter schools located in the district and may differ slightly from the NYCPS Demographic Snapshot.

## SPECIAL PROGRAMS

Table 19: District 9 Special Program Summary

	District 9	Bronx
Schools with ASD Programs	5	32
Horizon	4	17
Nest	1	17
Schools with G&T Programs	2	17
Schools with Bilingual Ed Programs	29	91
Dual Language (DL)	11	28
Transitional Bilingual Education (TBE)	1	6
DL/TBE	17	57

Note: Schools with both Horizon and Nest programs are counted once in the top row but separately in the Horizon and Nest rows beneath.



